
Remaking Cities Congress

Pittsburgh, PA

October 16-18, 2013



Major Partners

Remaking Cities Institute,
Carnegie Mellon University

The American Institute
of Architects

The 21st Century City as an Innovation Hub: Toronto-Hamilton- Kitchener-Waterloo

By: Kevin Stolarick

Kitchener-Waterloo-Cambridge-Toronto-Hamilton - 1988

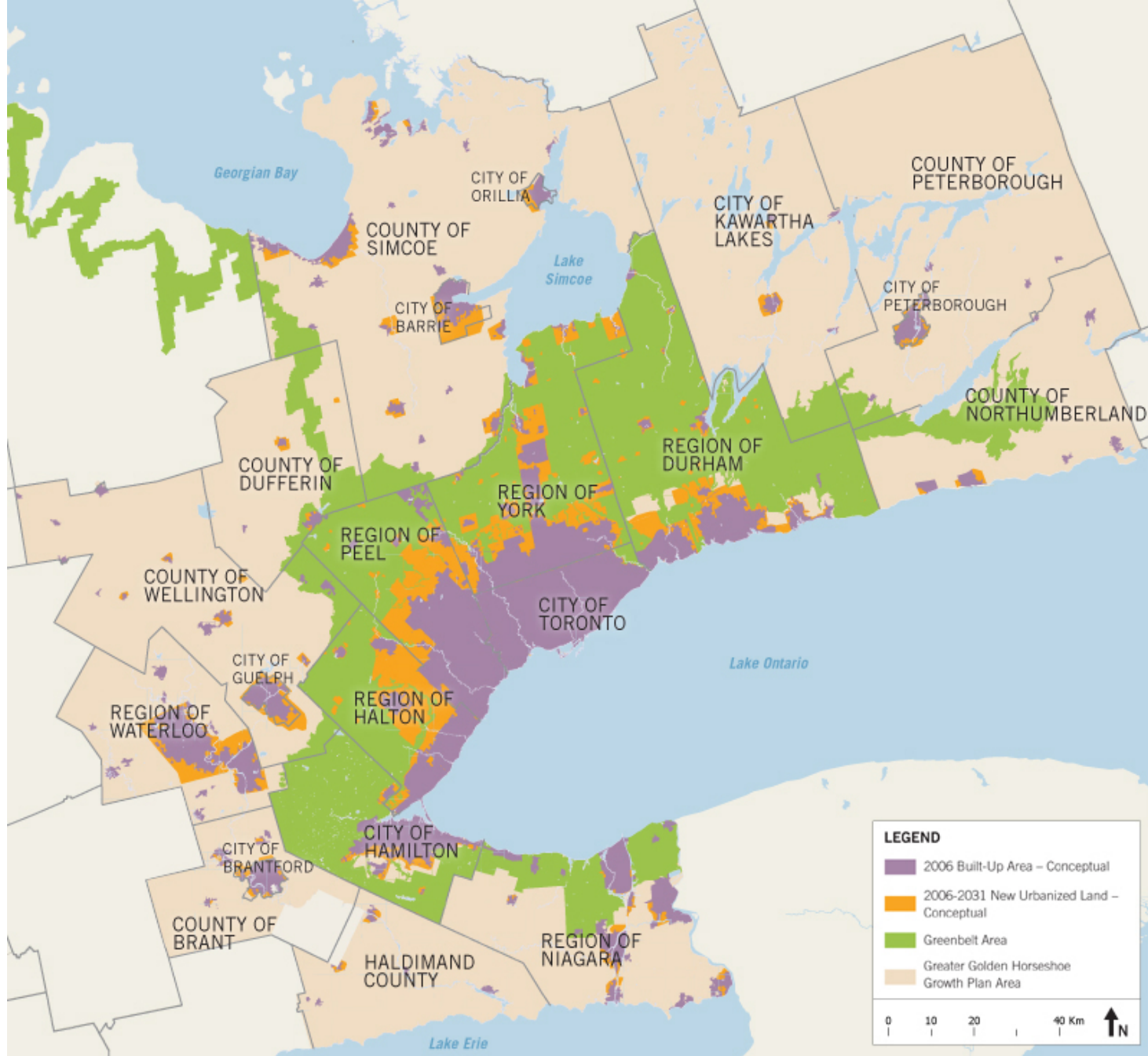


Source:
Google Earth Engine

Kitchener-Waterloo-Cambridge-Toronto-Hamilton – 2012



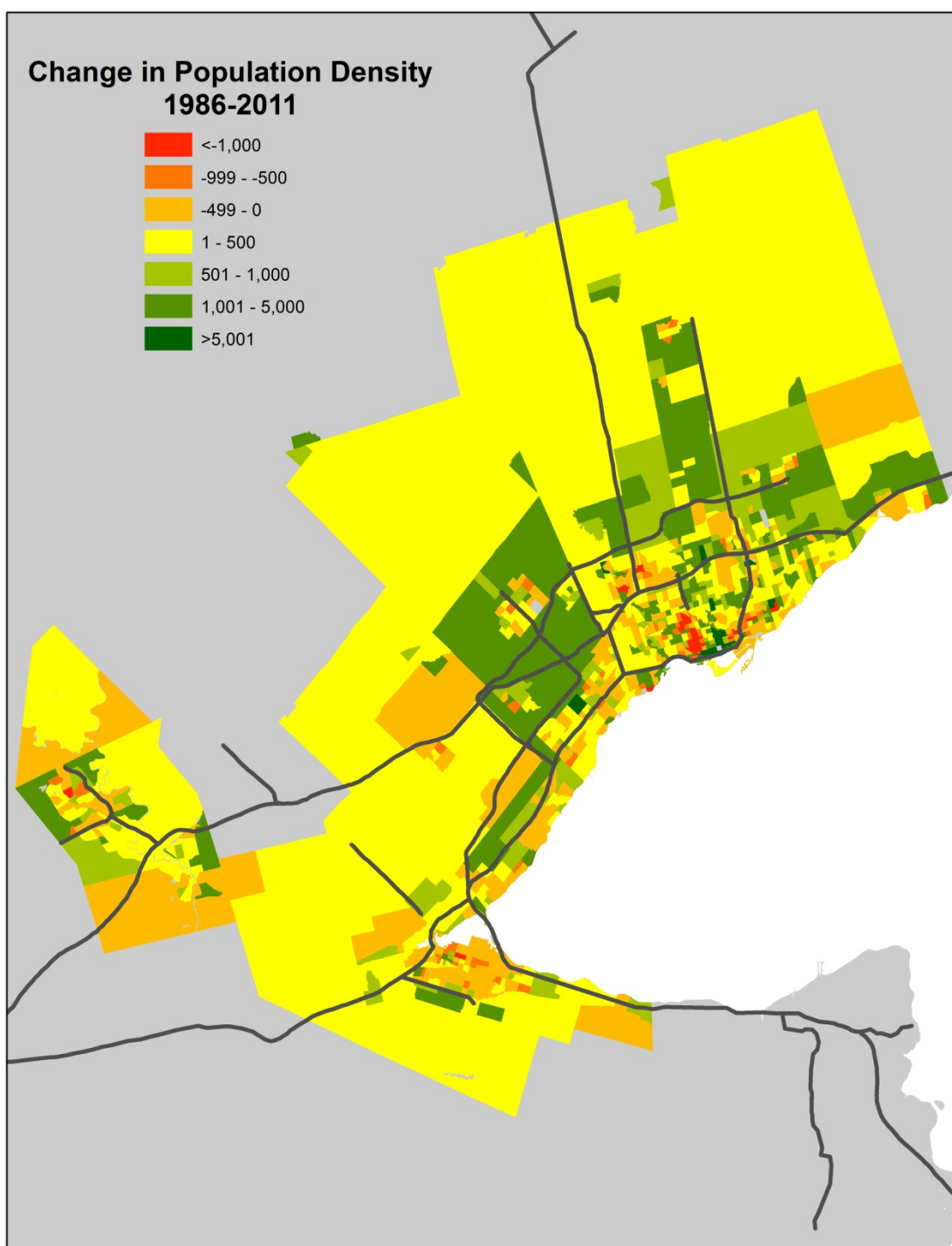
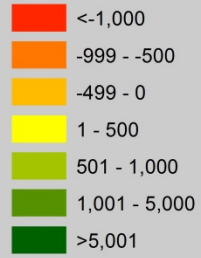
Source:
Google Earth Engine



Source:
Ontario
Growth
Secretariat

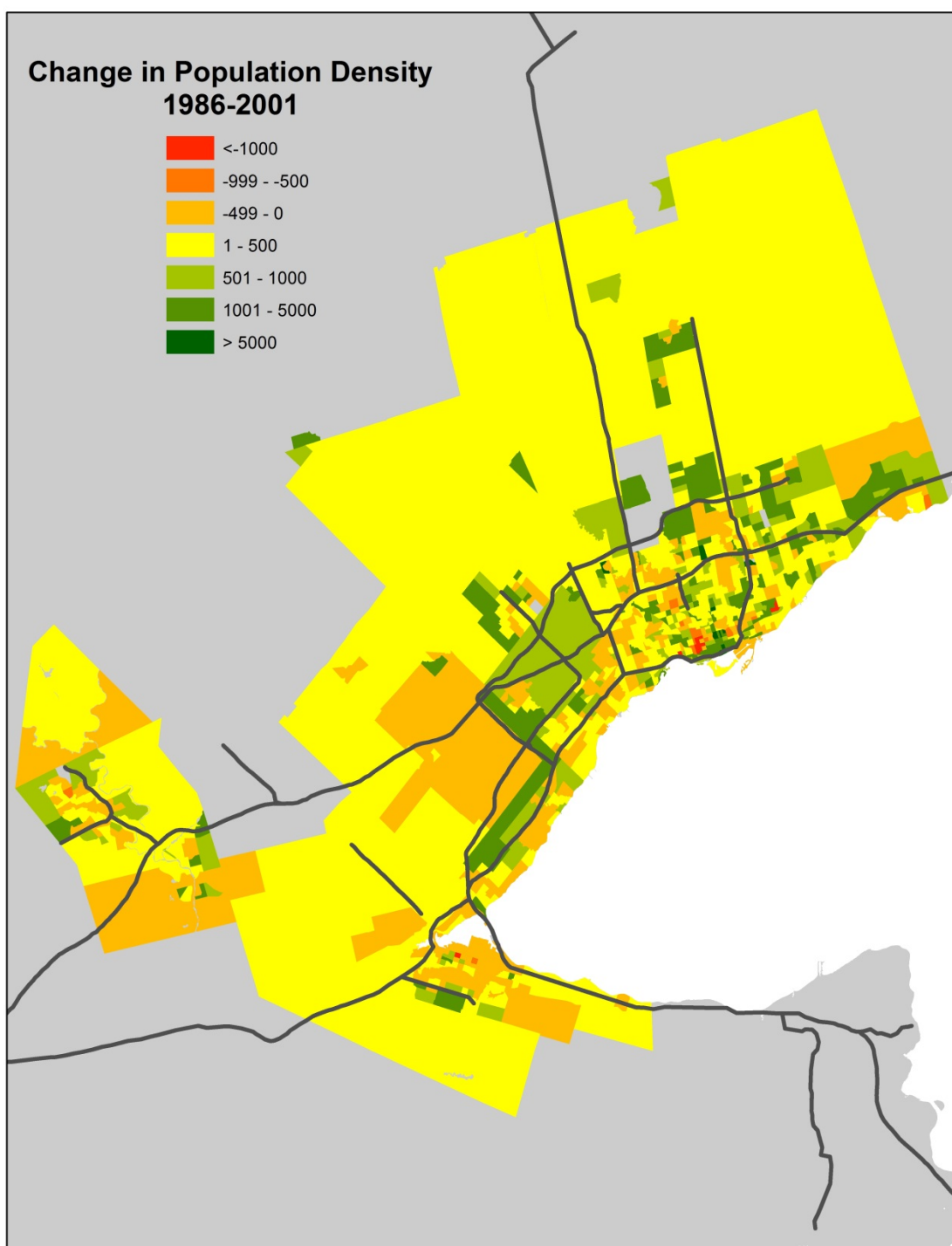
Note: The information displayed on this map is not to scale, does not accurately reflect approved land-use and planning boundaries, and may be out of date. For more information on precise boundaries, the appropriate municipality should be consulted. For more information on Greenbelt Area boundaries, the Greenbelt Plan 2005 should be consulted. The Province of Ontario assumes no responsibility or liability for any consequences of any use made of this map.

Change in Population Density 1986-2011



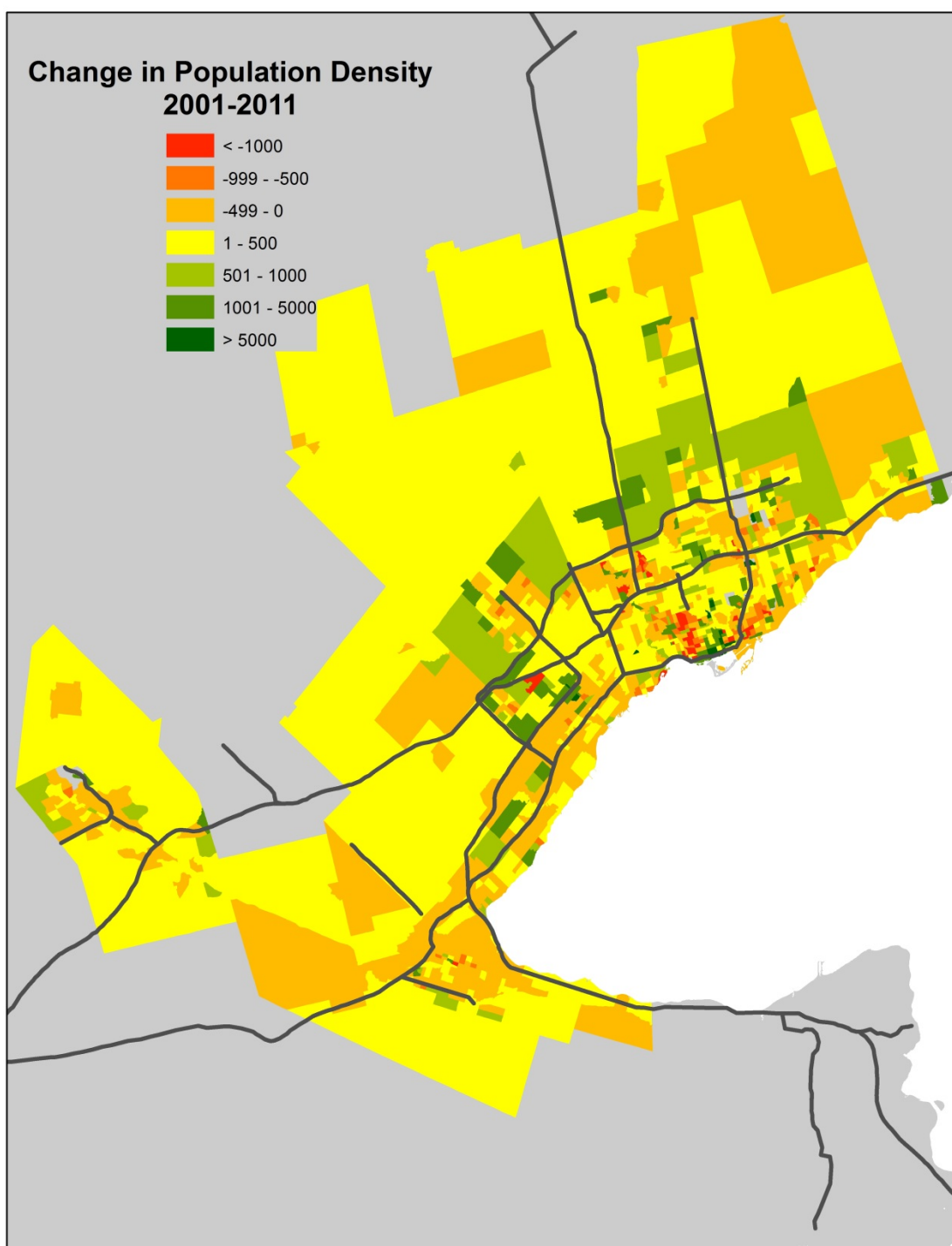
Source:
Statistics Canada with
Martin Prosperity
Institute Analysis

Change in Population Density 1986-2001



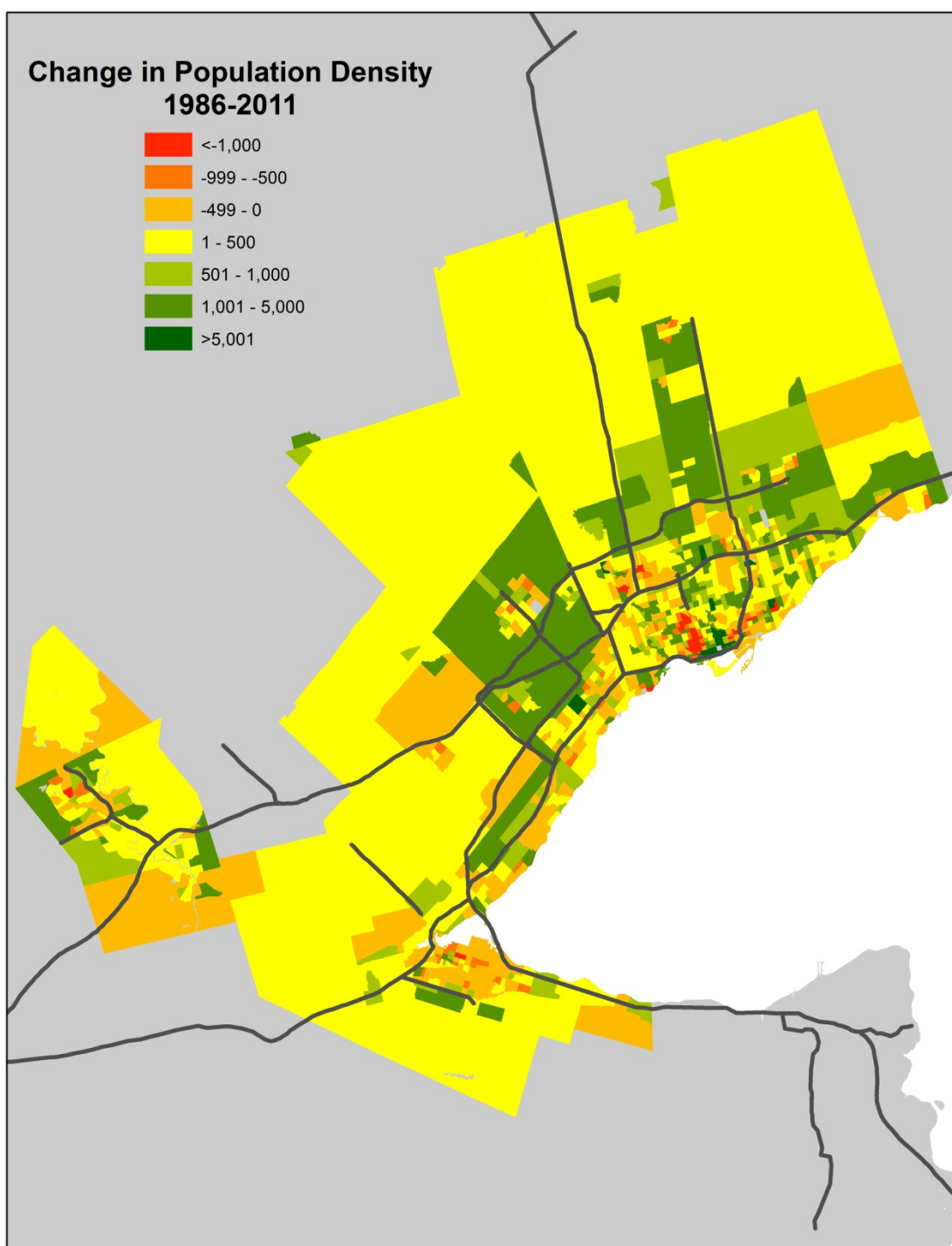
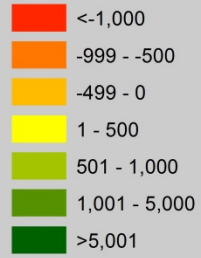
Source:
Statistics Canada with
Martin Prosperity
Institute Analysis

Change in Population Density 2001-2011

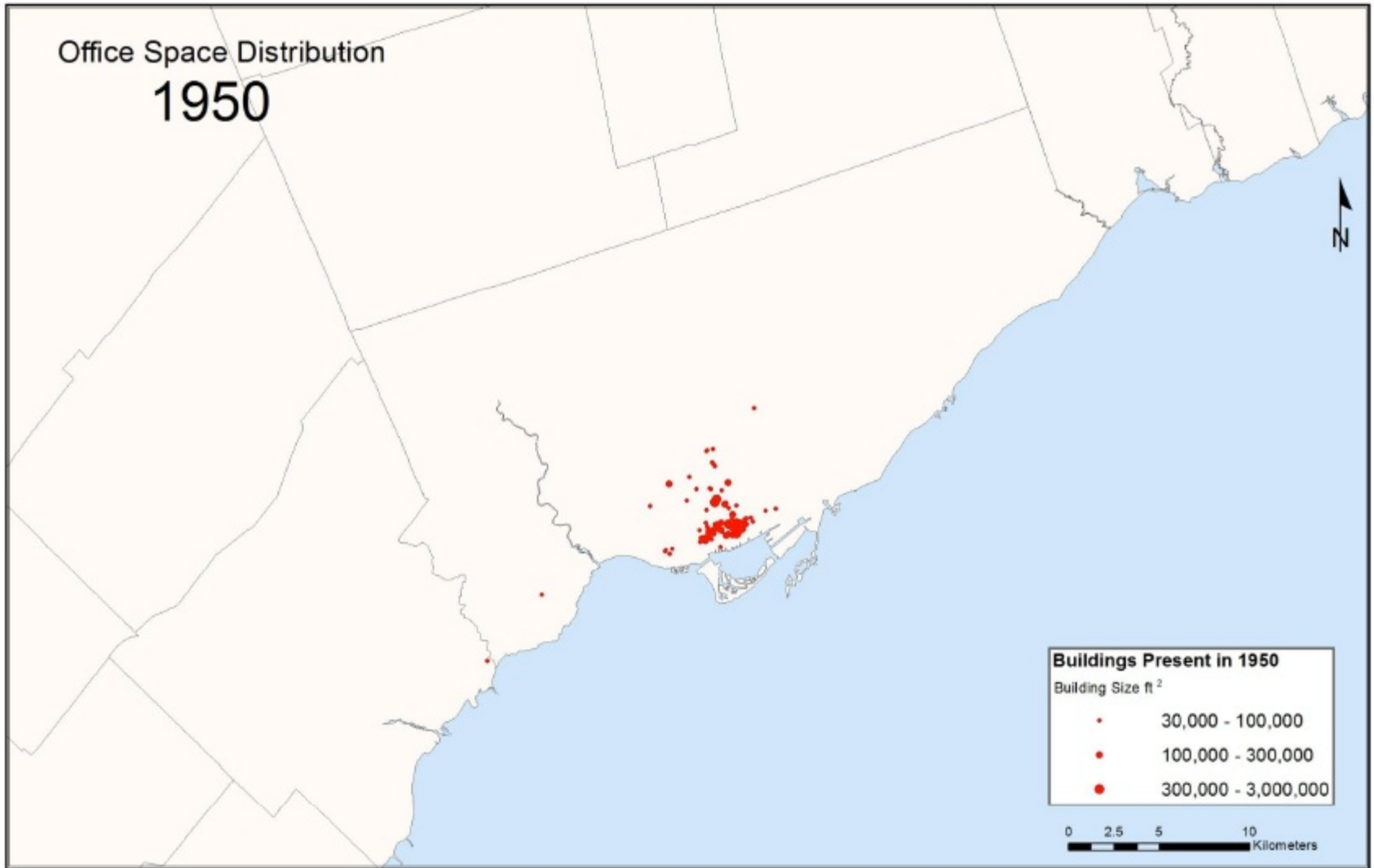


Source:
Statistics Canada with
Martin Prosperity
Institute Analysis

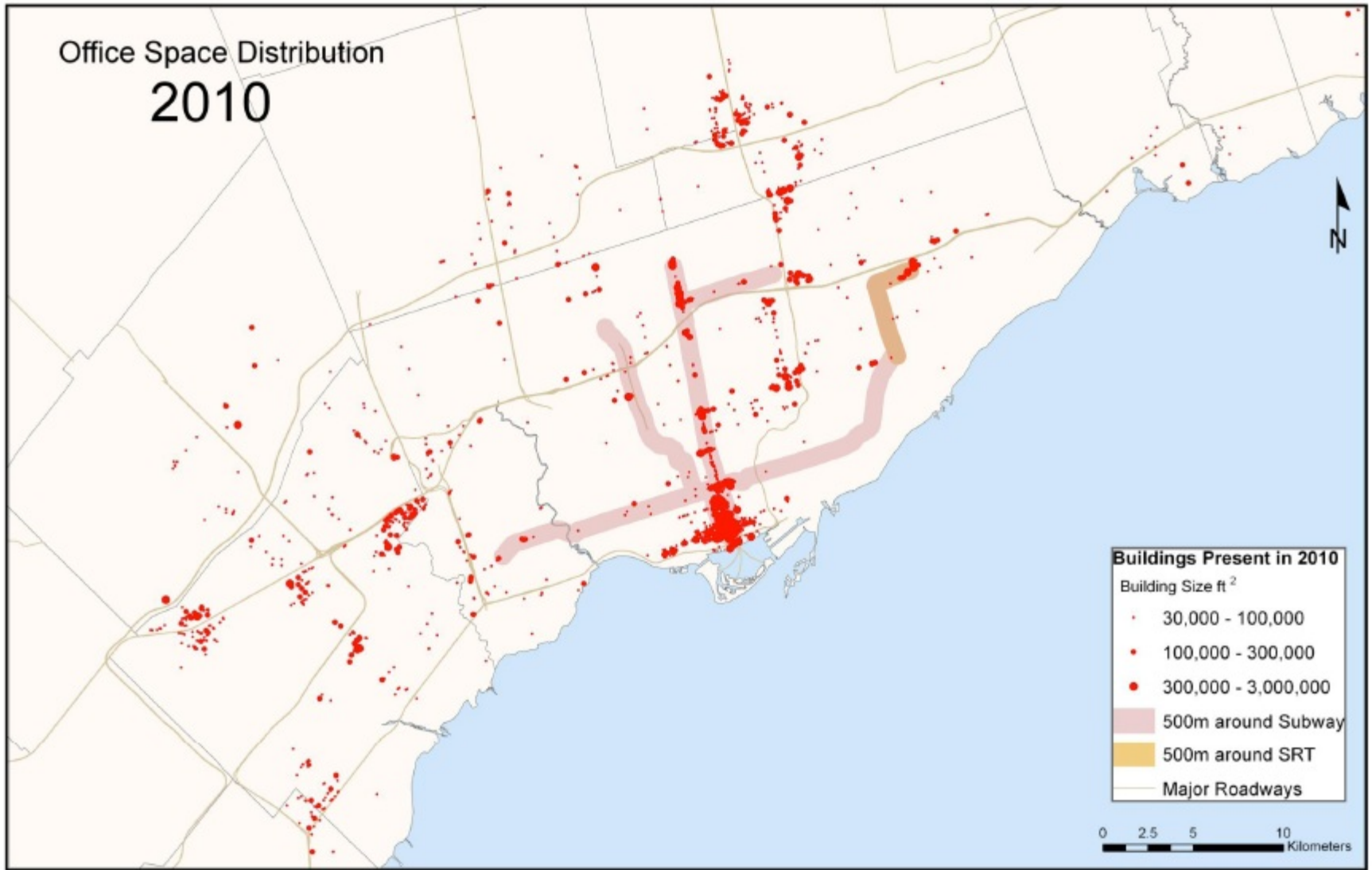
Change in Population Density 1986-2011



Source:
Statistics Canada with
Martin Prosperity
Institute Analysis

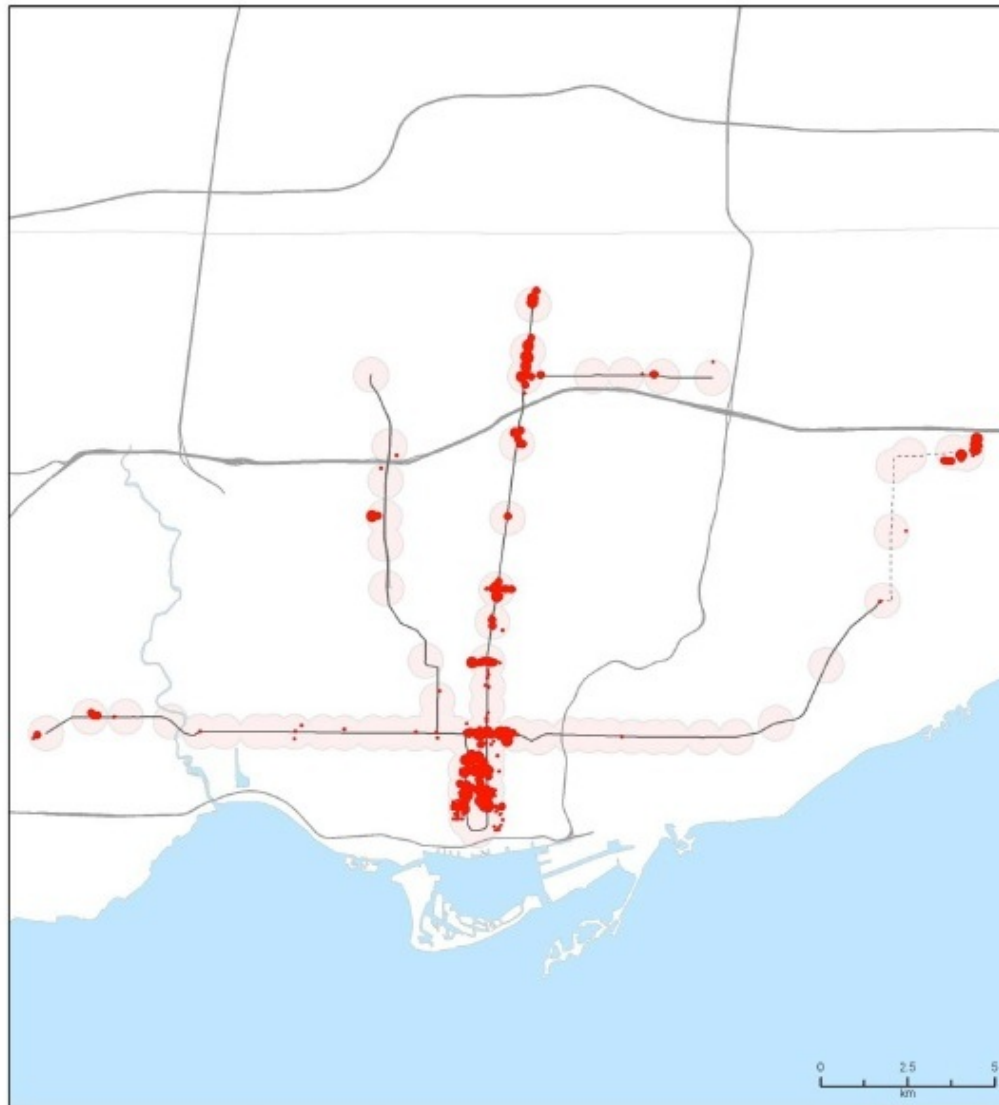


Source:
Canadian Urban Institute



Source:
Canadian Urban Institute

Toronto Transit-Oriented Submarket



Building Size ft²

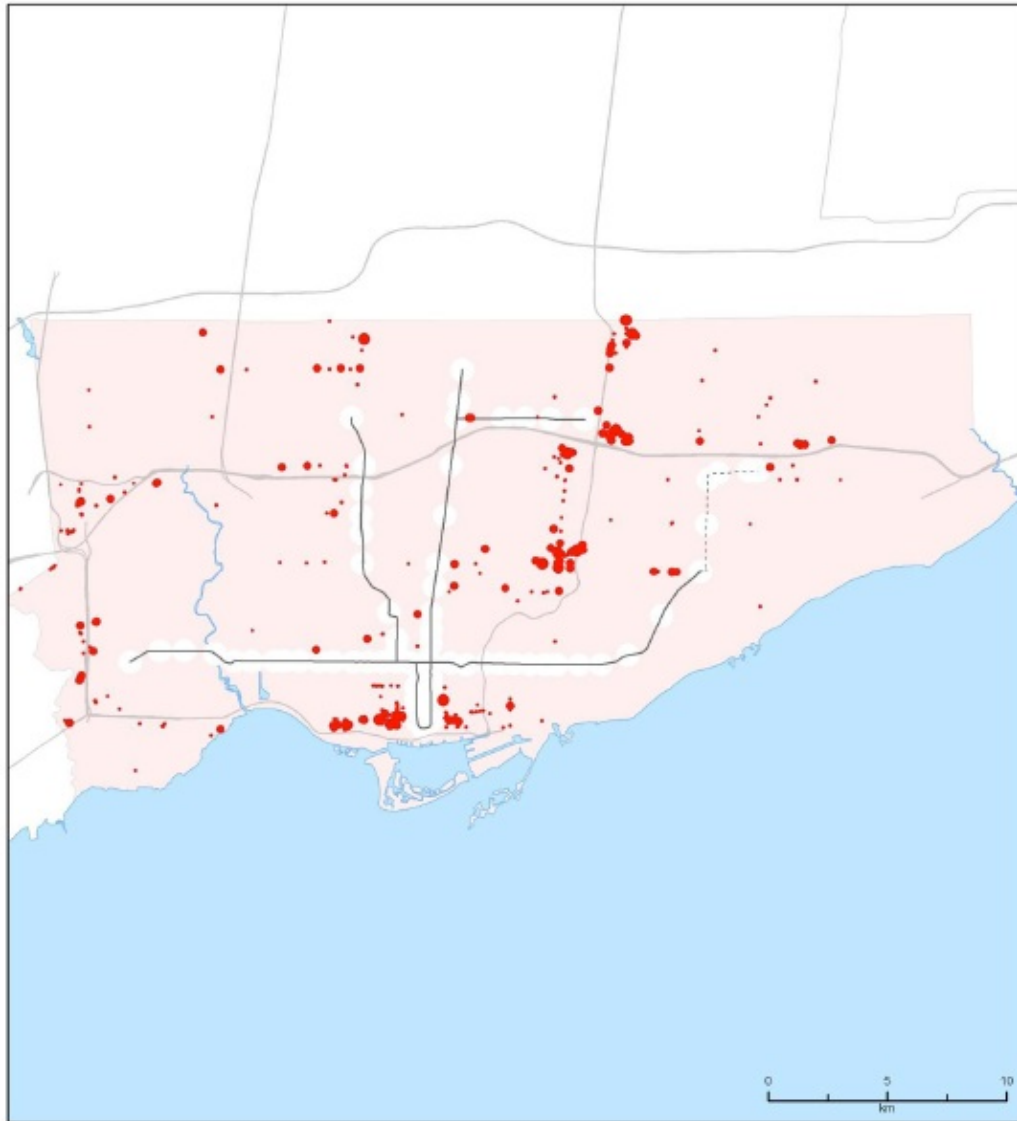
- 30,000 - 100,000
- 100,001 - 300,000
- 300,001 - 3,000,000

- TTC Subway
- - - Scarborough Rapid Transit
- 500 m around TTC Stations
- Expressway

Source:
Canadian Urban Institute



Toronto "Non-Transit" Submarket



Building Size ft²

- 30,000 - 100,000
- 100,001 - 300,000
- 300,001 - 3,000,000

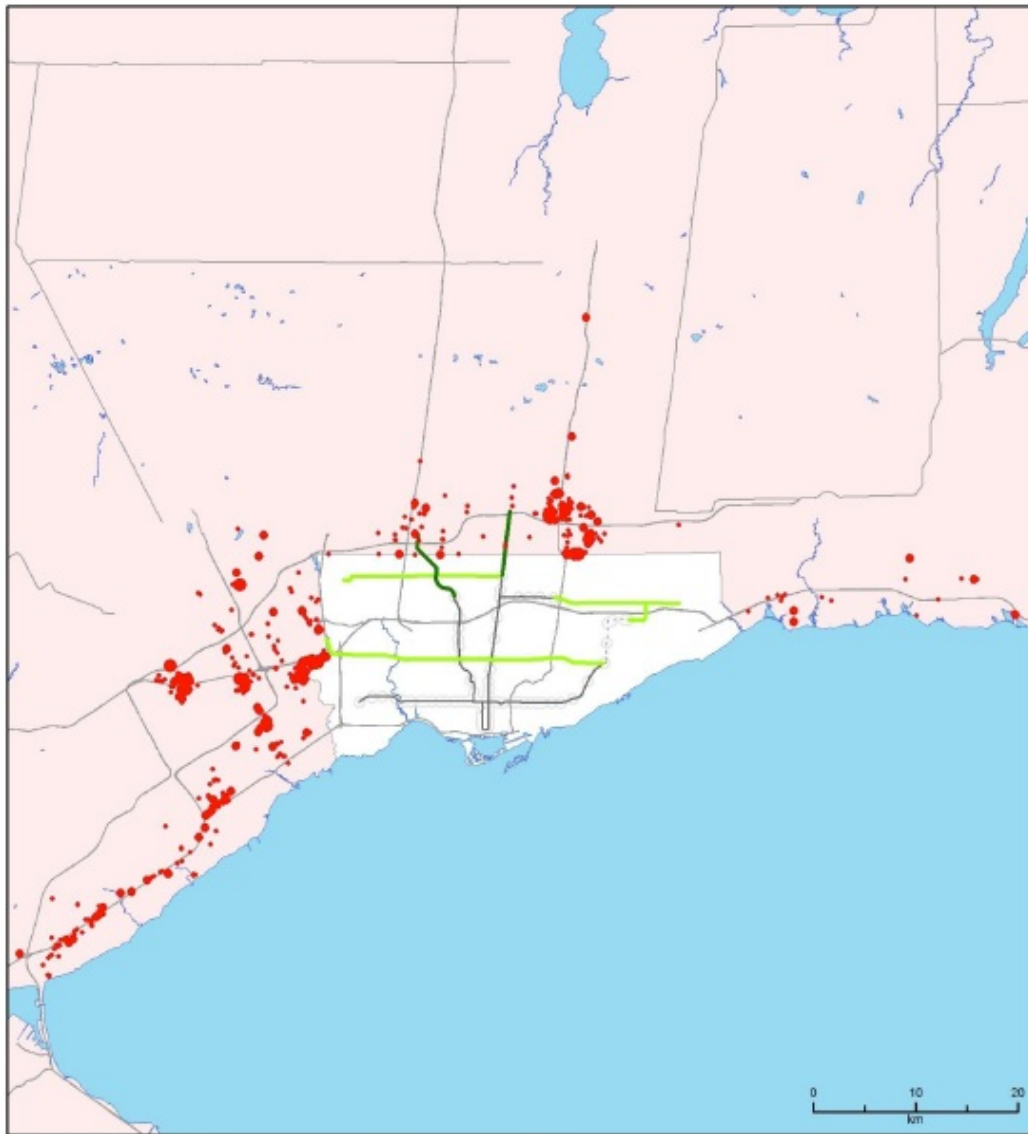
- TTC Subway
- - - Scarborough Rapid Transit
- 500 m around TTC Stations
- Expressway

Source:
Canadian Urban Institute



erityInstitute

The Suburban Municipalities - the 905



Building Size ft²

- 30,000 - 100,000
- 100,001 - 300,000
- 300,001 - 3,000,000

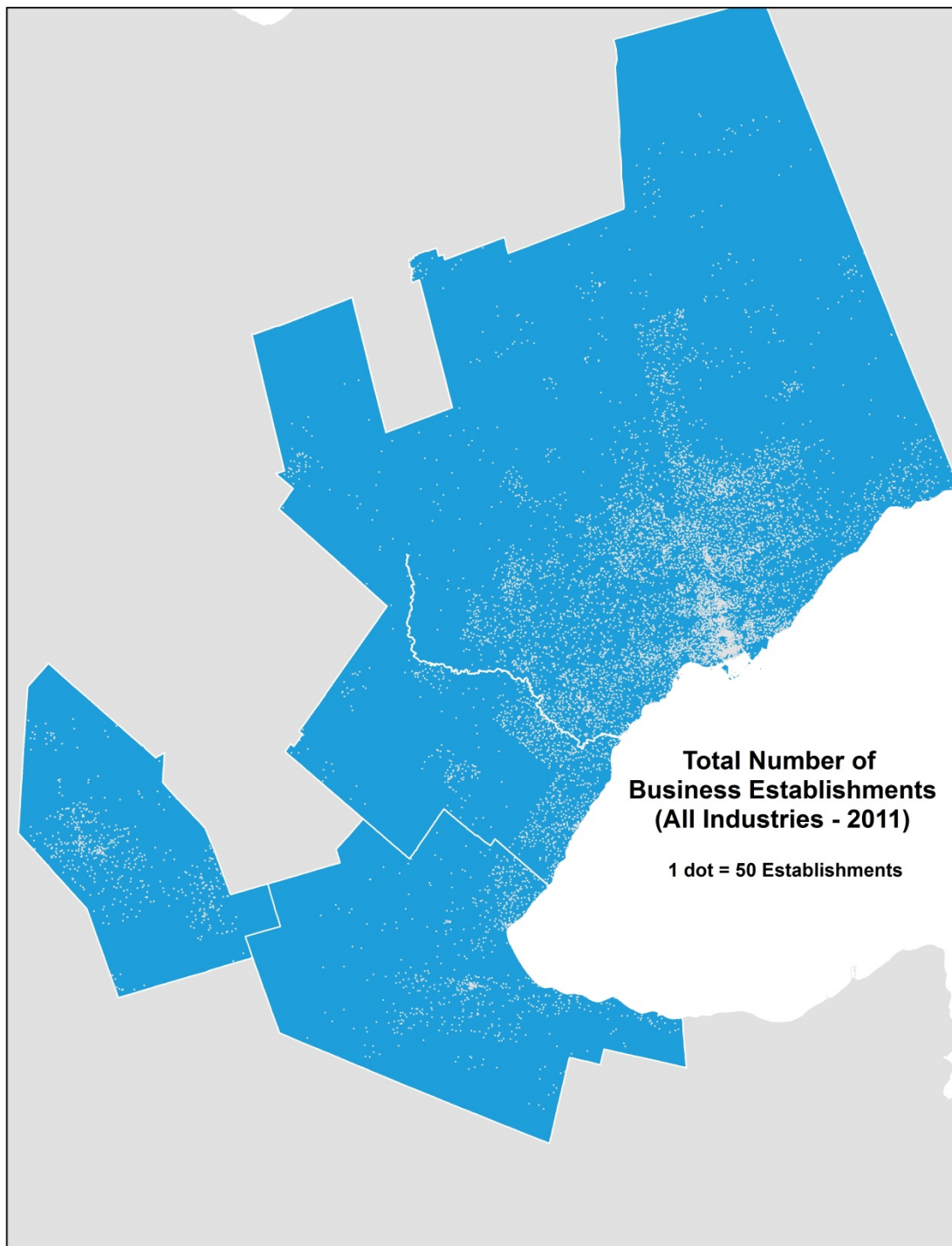
- Extension Lines 2010
- Planned Light Rail 2010
- TTC Subway
- Scarborough Rapid Transit

- 500 m around TTC Stations
- Expressway

Source:
Canadian Urban Institute



N
erityInstitute

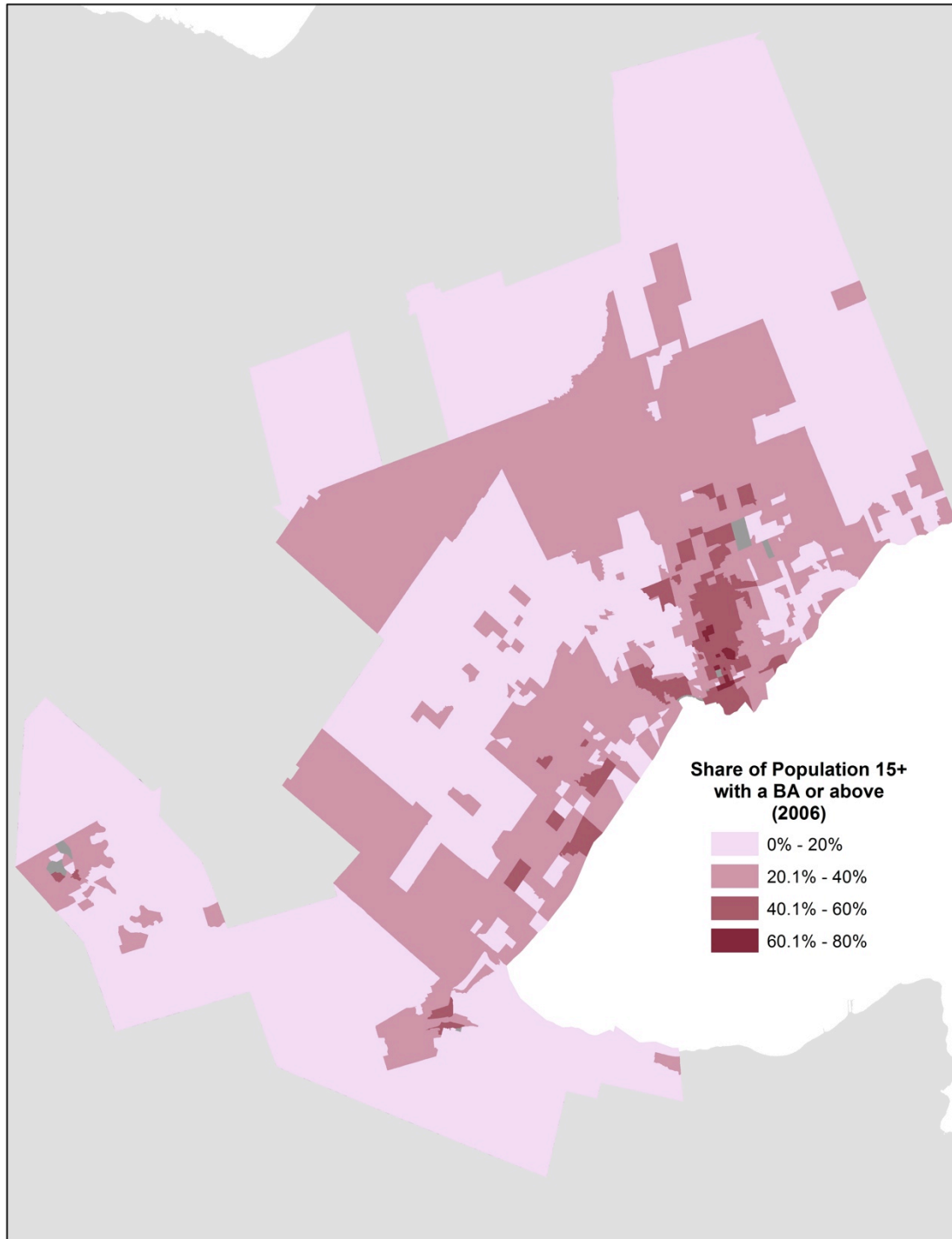


Source:
Canadian Business
Patterns with Martin
Prosperity Institute
Analysis

	Effective Patent Count				
	2006	2007	2008	2009	2010
Toronto	816.2	782.4	811.8	867.0	1,197.6
Waterloo*	154.1	188.5	219.4	303.5	420.2
Hamilton	57.3	55.1	58.7	75.7	85.4

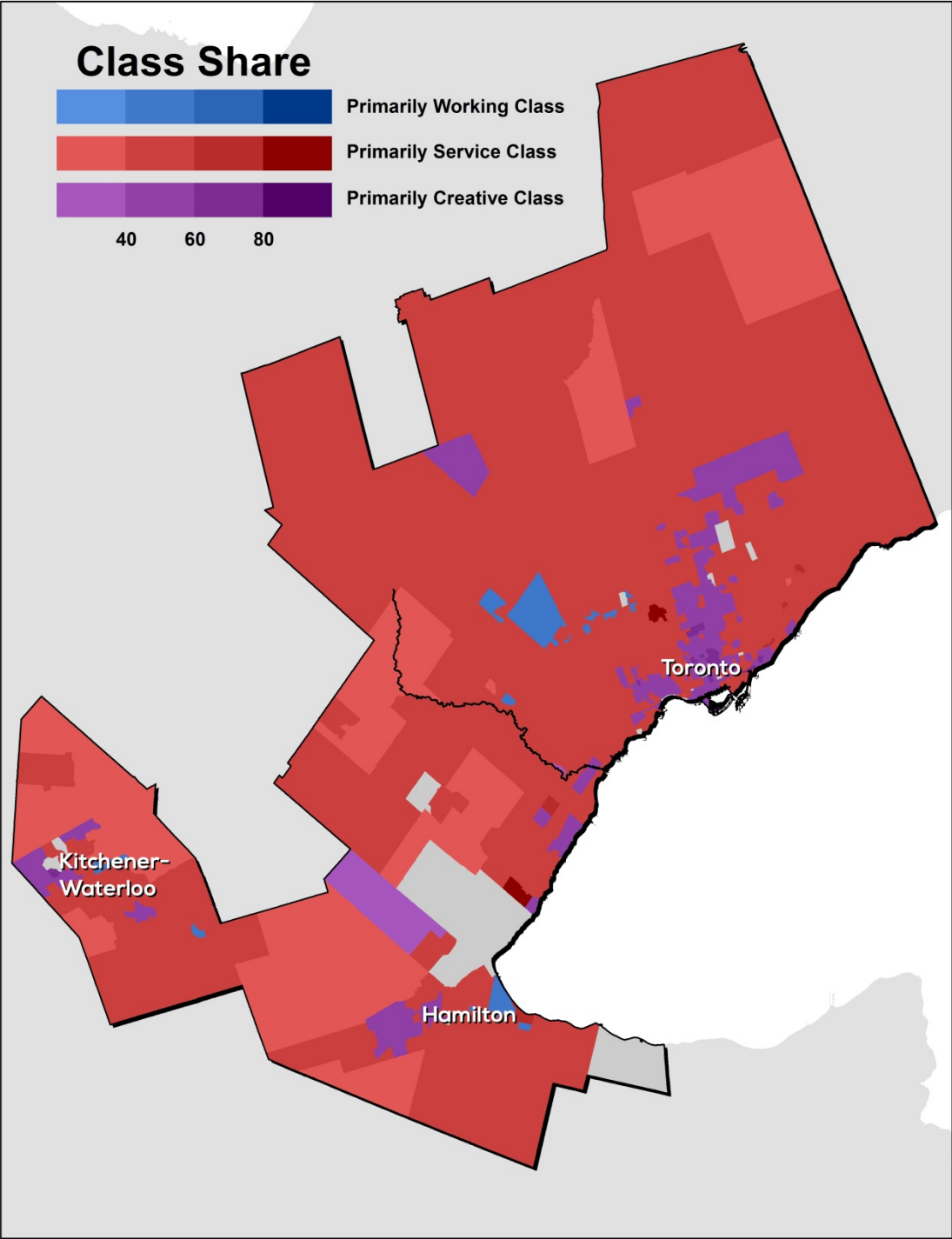
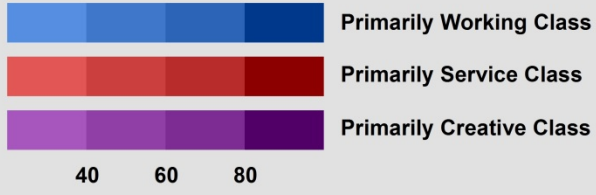
* 67.2% of Waterloo's Patents in 2010 were assigned to RIM

Source:
 United States Patent and
 Trademark Office with
 Martin Prosperity
 Institute Analysis



Source:
Statistics Canada with
Martin Prosperity
Institute Analysis

Class Share



Source:
Statistics Canada with
Martin Prosperity
Institute Analysis

Thank You

Kevin Stolarick

kms@rotman.utoronto.ca
@stolarick
martinprosperity.org

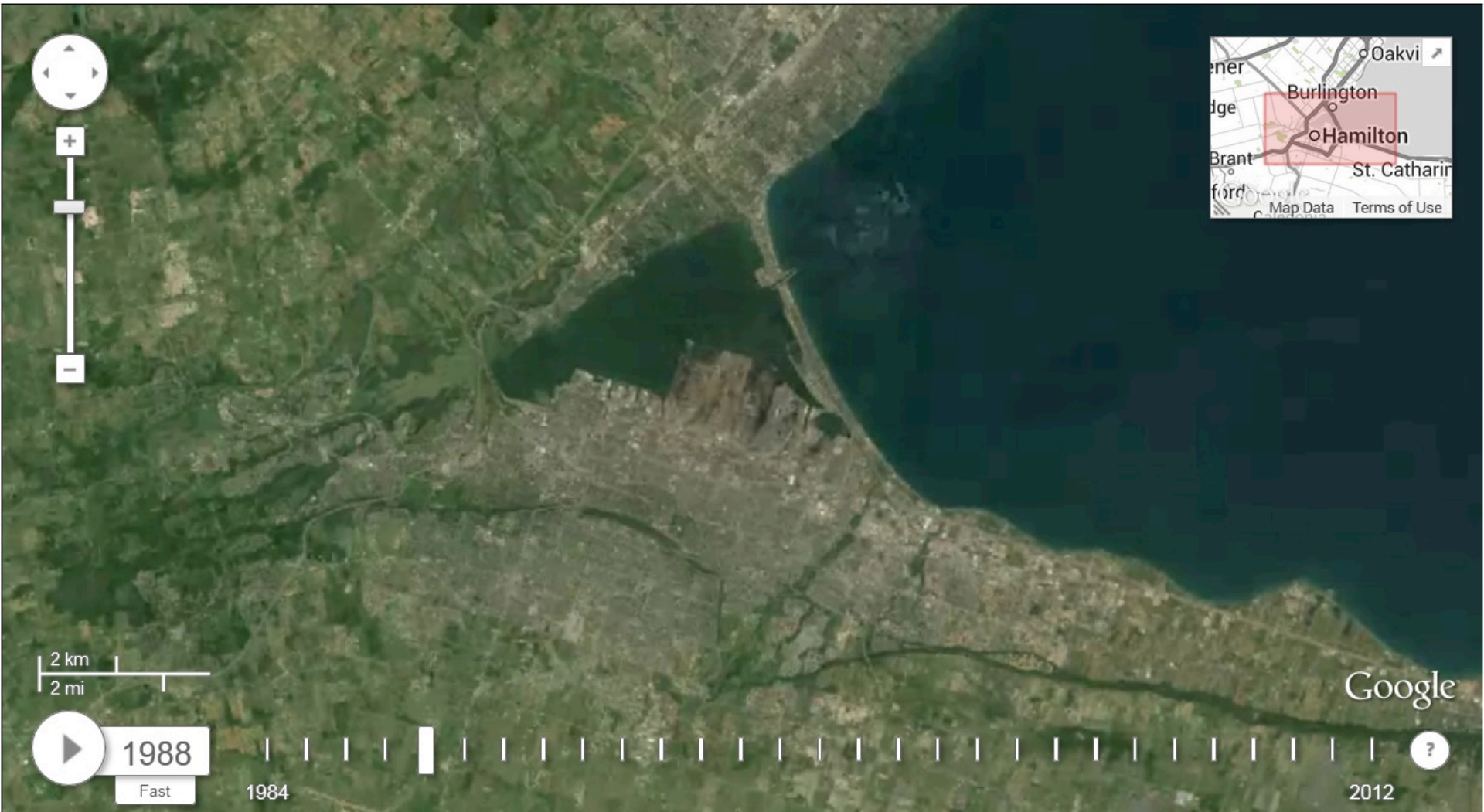
***Shawn Gilligan** for doing all the work, **Zara Matheson** for maps, **Michelle Hopgood** for graphics.

Michael McClelland, **Melanie Fasche**, and **Arlene Gould** for joining the Toronto delegation.

Outline

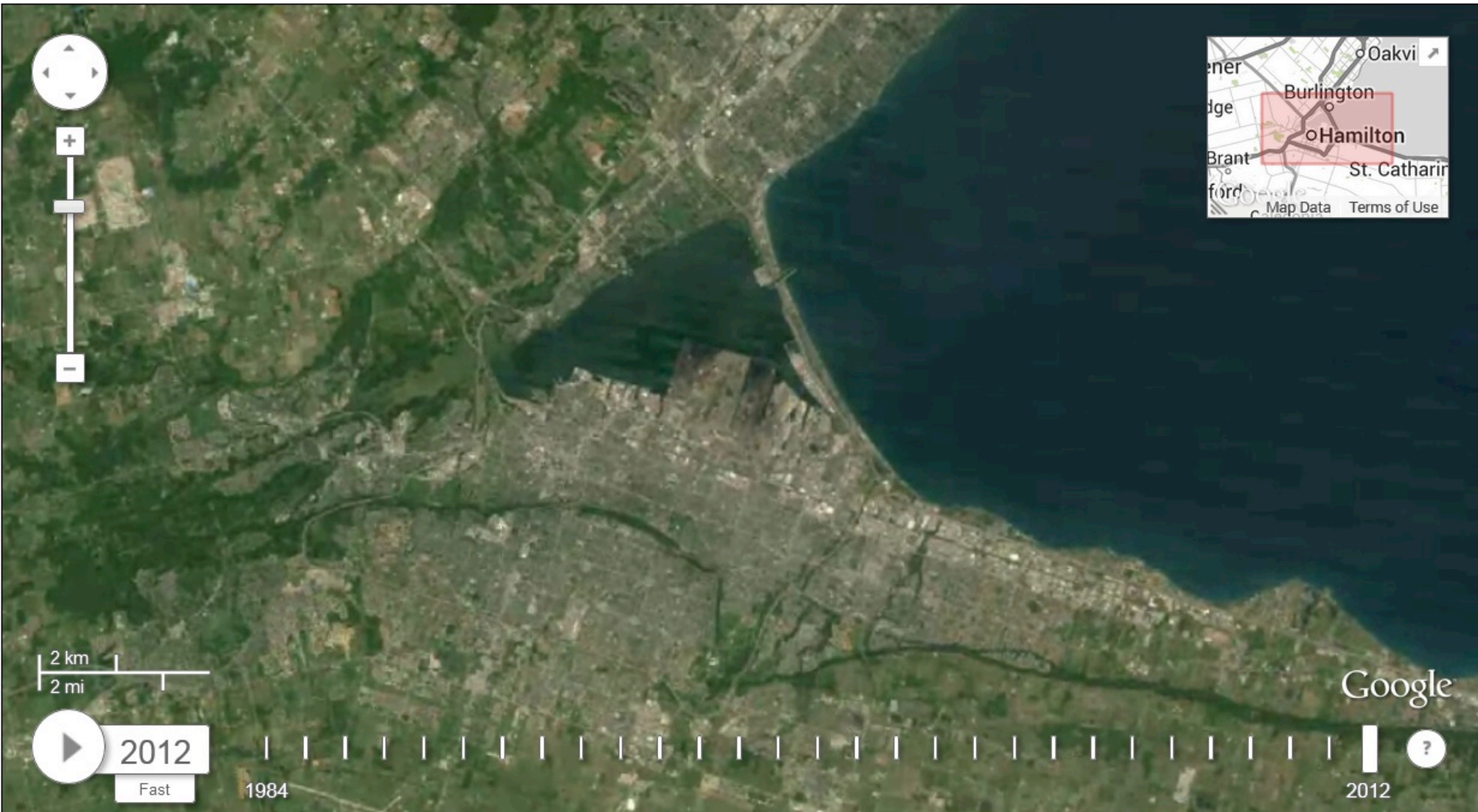
1. Introduction
2. Executive Summary
3. Brief History of the City
4. The City in 1988
 - physical form, conditions
 - demographics
 - economy
5. The City in 2013
 - physical form, conditions
 - demographics
 - economy
6. Progress Report (1988 - 2013)
 - What went right.
 - What went wrong.
 - Lessons learned.
7. Prospects for the Future (What's left to do?)

Hamilton - 1988



Source:
Google Earth Engine

Hamilton - 2012



Source:
Google Earth Engine

Toronto - 1988



Toronto - 2012



Source:
Google Earth Engine

Kitchener/Waterloo - 1988



Source:
Google Earth Engine

Kitchener/Waterloo - 2012



Source:
Google Earth Engine

Cambridge - 1988

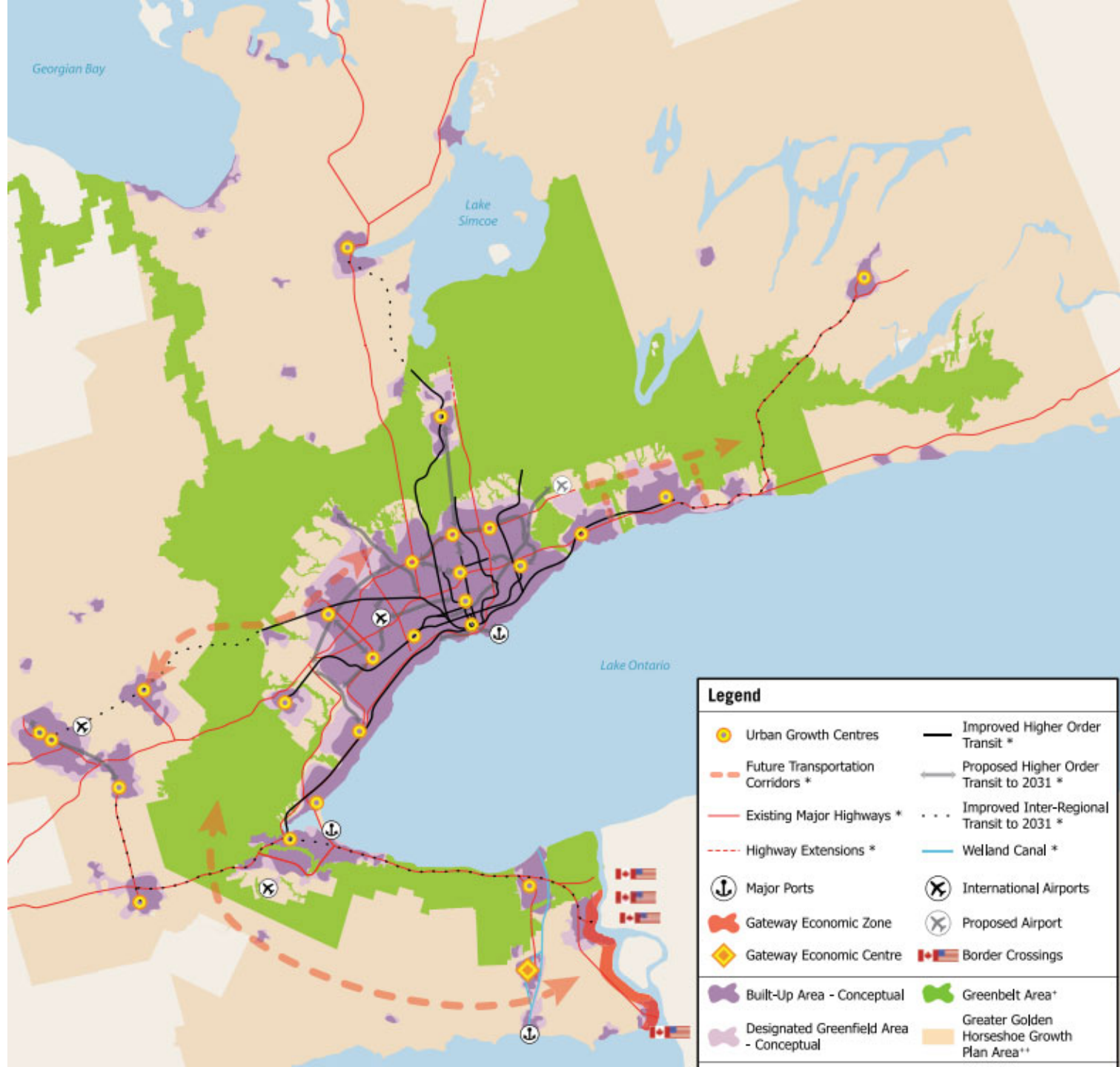


Source:
Google Earth Engine

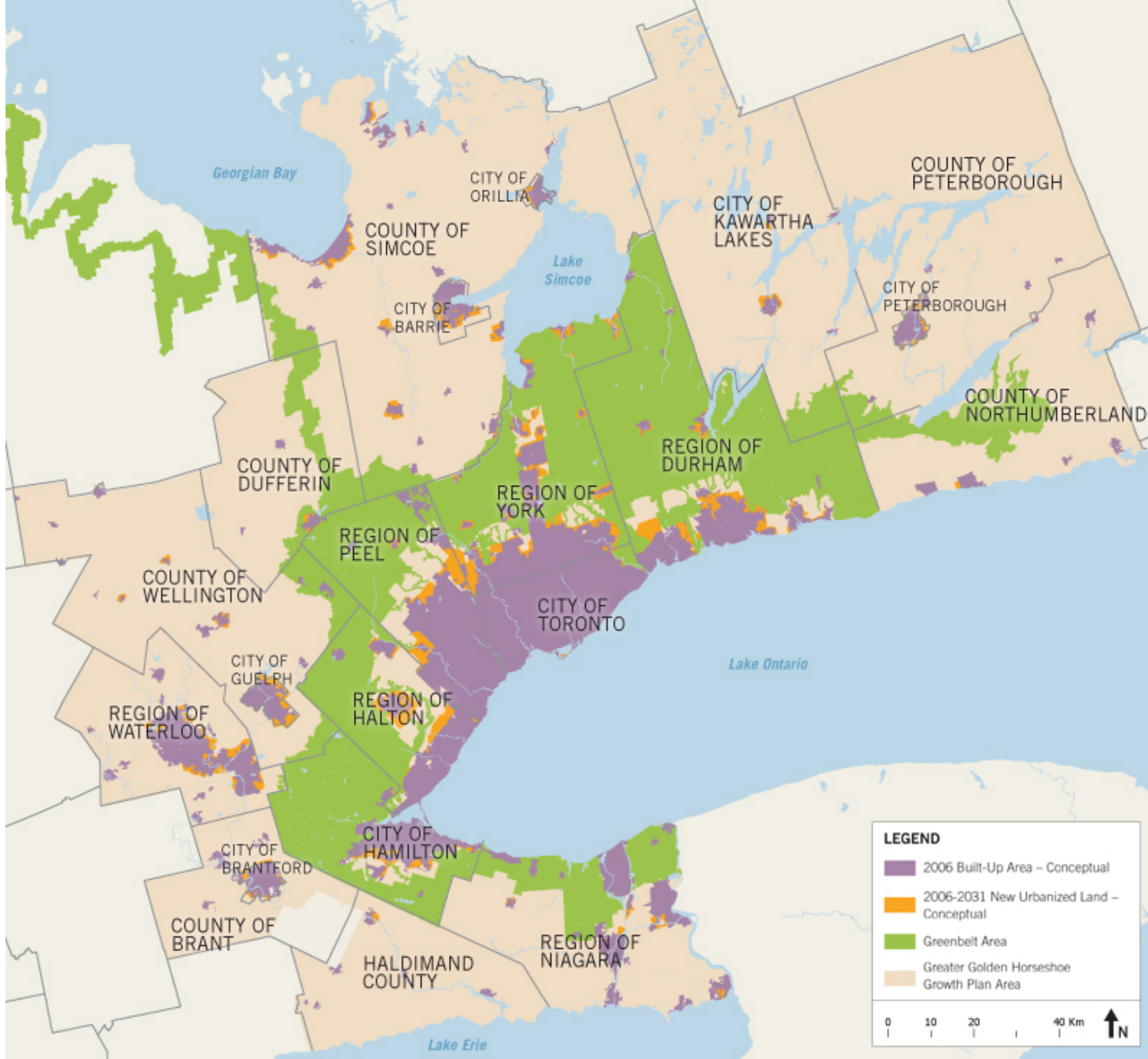
Cambridge – 2012



Source:
Google Earth Engine

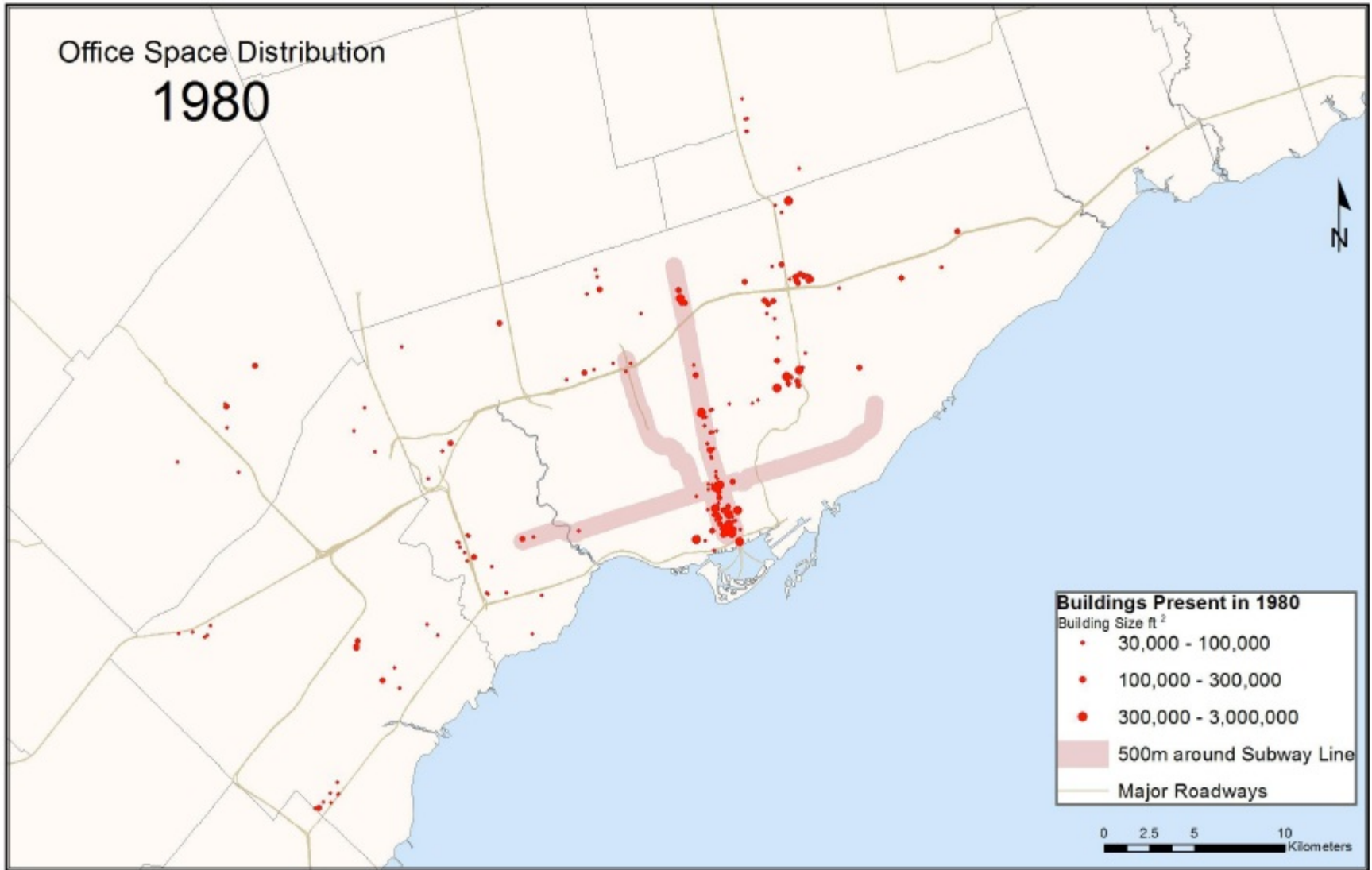


Source:
Ontario
Growth
Secretariat

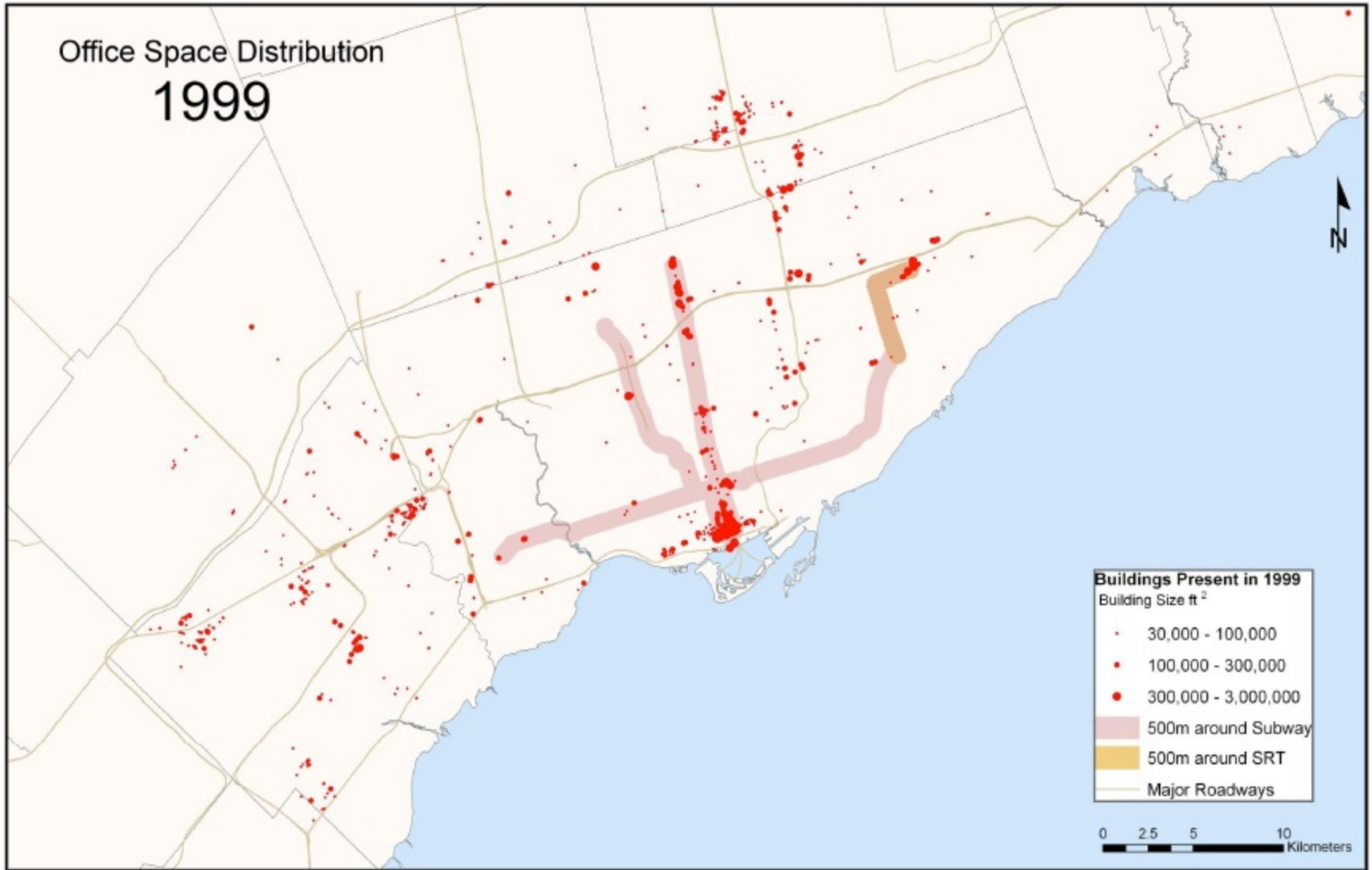


Source:
Ontario
Growth
Secretariat

Note: The information displayed on this map is not to scale, does not accurately reflect approved land-use and planning boundaries, and may be out of date. For more information on precise boundaries, the appropriate municipality should be consulted. For more information on Greenbelt Area boundaries, the Greenbelt Plan 2005 should be consulted. The Province of Ontario assumes no responsibility or liability for any consequences of any use made of this map.



Source:
Canadian Urban Institute



Source:
Canadian Urban Institute