
Remaking Cities Congress

Pittsburgh, PA

October 16-18, 2013



Major Partners

Remaking Cities Institute,
Carnegie Mellon University

The American Institute
of Architects

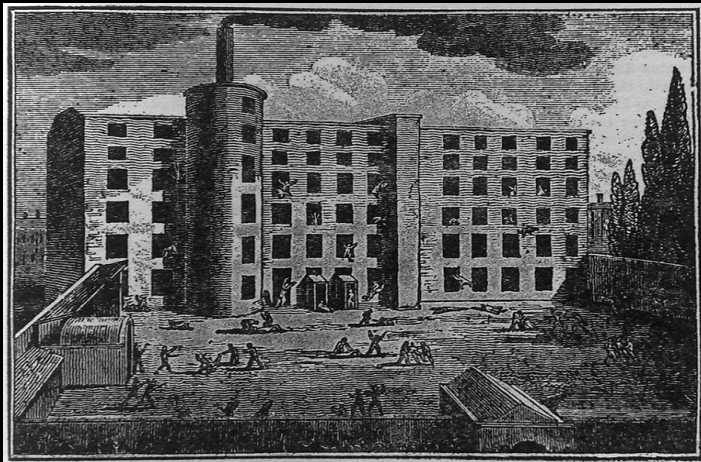
The 21st Century City as an Innovation Hub:

Liverpool-Manchester – The Original Post-Industrial Story

Professor Erik Bichard

Regeneration and Sustainable Development

The Origins of Industry



Great Rivalry



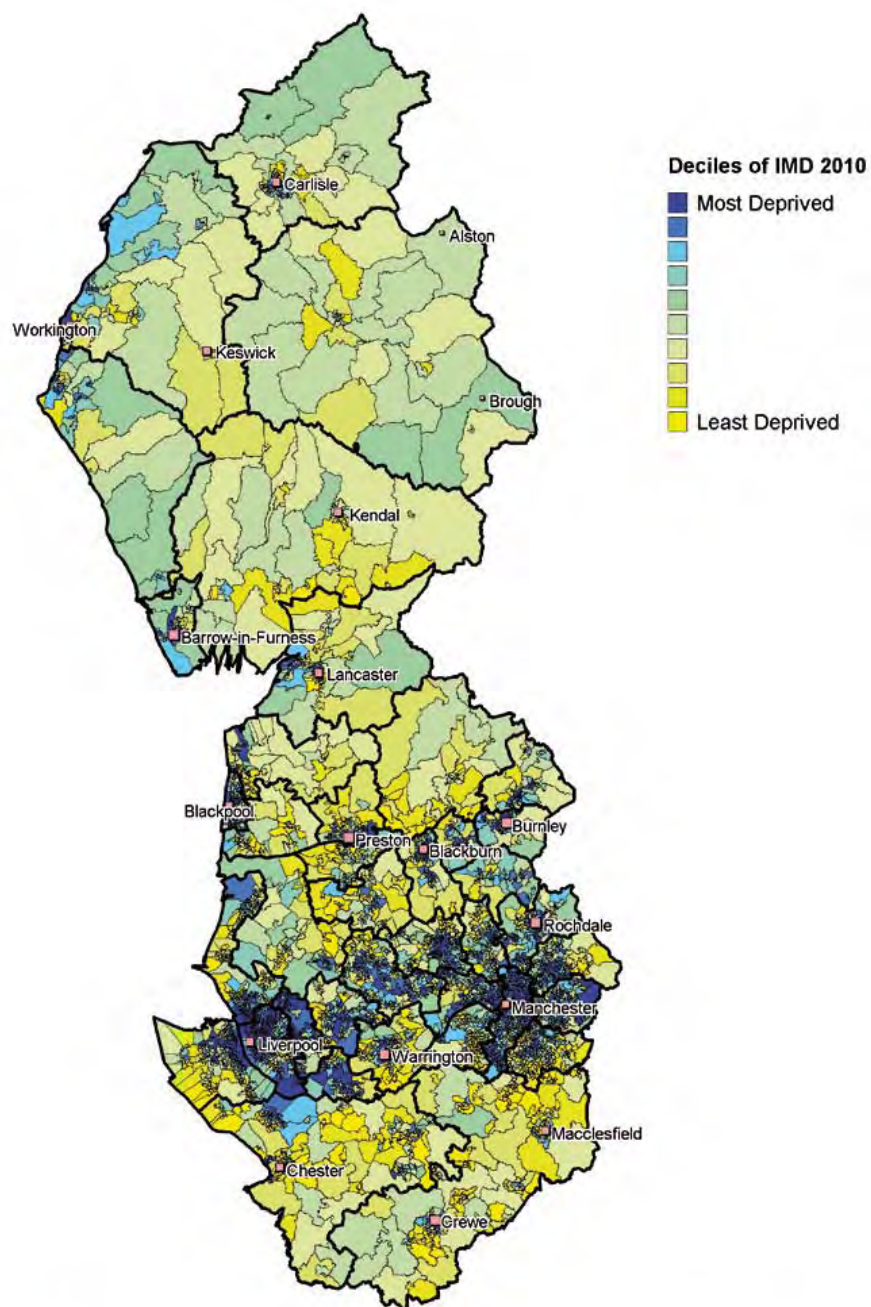
- 30 miles and a chasm of goodwill
- 19th century battle of culture and commerce vs. manufacturing and enterprise
- Joined in 1830 by first passenger rail line (Stevenson's Rocket)
- Import tax on cotton led to the Manchester Ship Canal (completed in 1894) and Britain's 4th port
- Modern Airport wars, football teams, sub-regional economies

Liverpool the Great

- As late as 1901 known as the British Empires' second city
- Gateway for emigration – 9 million embarked to Americas and Australia between 1830 and 1930
- Population 870,000 in 1930
- Wealth through moving goods and people

Liverpool in Decline

- Inter-war fall in manufacturing and containerisation damaged port economy
- Population halves to 460,000 in the 20th century
- Until recently poorest county in Europe below 75% of average EU GDP
- Port employment falls from over 100,000 to less than 2,000 in 50 years, and 76,000 go in manufacturing between 1961 and 1971

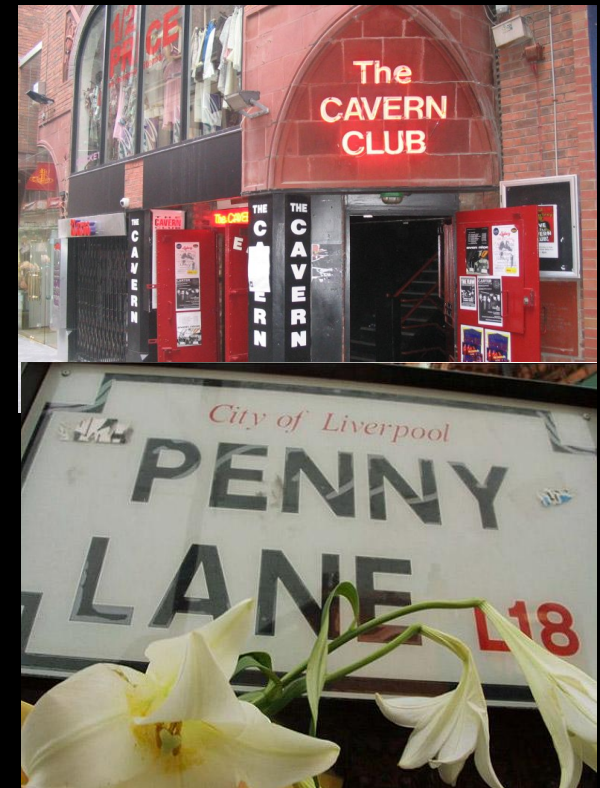


Ranking 1998 ILD	Ranking 2000 IMD (based on average of ward ranks)	Ranking 2004 IMD (based on average of SOA scores in 354 districts)	Ranking 2007 IMD (based on average of SOA scores in 354 districts)	Ranking 2010 IMD (based on average of SOA scores in 326 districts)
1 - Liverpool	1 - Tower Hamlets	1 - Liverpool	1 - Liverpool	1 - Liverpool
2 - Newham	2 - Hackney	2 - Manchester	2 - Hackney	2 - Hackney
3 - Manchester	3 - Newham	3 - Knowsley	3 - Tower Hamlets	3 - Newham
4 - Hackney	4 - Easington	4 - Tower Hamlets	4 - Manchester	4 - Manchester
5 - Birmingham	5 - Liverpool	5 - Hackney	5 - Knowsley	5 - Knowsley
6 - Tower Hamlets	6 - Knowsley	6 - Islington	6 - Newham	6 - Blackpool
7 - Sandwell	7 - Manchester	7 - Nottingham	7 - Easington	7 - Tower Hamlets
8 - Southwark	8 - Islington	8 - Easington	8 - Islington	8 - Middlesbrough
9 - Knowsley	9 - Southwark	9 - Hull	9 - Middlesbrough	9 - Birmingham
10 - Islington	10 - Hartlepool	10 - Middlesbrough	10 - Birmingham	10 - City of Kingston upon Hull

Source: DETR, July 2000 and IMD 2004, ODPM, and English Indices of Deprivation 2007 and 2010, DCLG. Crown copyright

Innovation? Culture and Liverpool

- Iconic municipal Architecture
- The Beatles and all that











Rollercoaster 1980's and 90s'

- Tall Ships Race, International Garden Festival
- The La's pre-cursor Britpop, The Farm pre-cursor Acid House
- But... Toxteth riots, Militant Tendency Council, disasters befall football team.

Albert Dock – Cultural Catalyst



Albert Dock 101

- Built 1845, closed 1972
- Political football in the Thatcher era as the Development Corporation took over control from Council
- Still isolated from the city centre
- Early attempt at multiple use space
- Attraction of Tate of the North
- Establishment of Maritime Museum
- Focus for new arena and Alsop's Museum of Liverpool



Rope Walks

- 2001 – 2004
- Design to be a ‘Cultural Quarter’
- Fashioned from derelict warehousing and other building near city centre
- Incorporates iconic development including the Foundation for Art and Creative Technology and the Tea Factory

From this...



University of
Salford
MANCHESTER

To this...



Capital of Culture

- Bid success in 2003 to host year long event in 2008
- Glasgow paved the way in 1990
- City claims almost £800M additional direct spend, almost 10M additional visitors (25% international almost all were there for the first time



It's happening in Liverpool

European Capital of Culture 2008

Over 200 events covering music, visual arts, performing arts, street theatre, architecture, sports and heritage: a true celebration of culture for everyone.

Highlights include the Official Opening Weekend, Gustav Klimt Exhibition, Liverpool Sound, the Tall Ships' Race 2008, Sir Simon Rattle and the Berliner Philharmoniker, the 5th International Biennial and the MTV Europe Music Awards.

There's never been a better time to visit Liverpool. For accommodation bookings call 0845 603 1125.

Register today for the very latest 2008 news at
liverpool08.com

supported
by the
northwest



Manchester



Manchester's Culture

- Lower key but possible as influential
- Hacienda Club popularises House in 80's
- Factory Records (Joy Division, Happy Mondays)
- Smiths, Oasis follow
- Many clubs and studios spring up in old warehouses brings young people back to centre
- International Festival

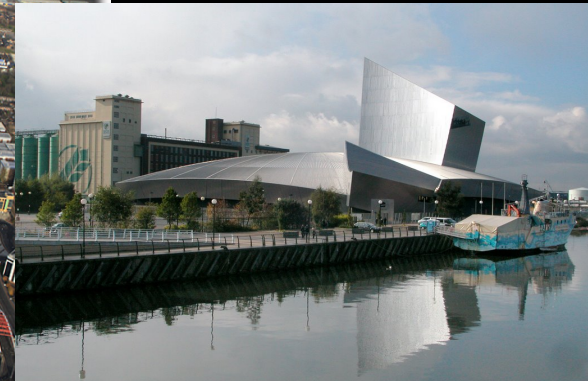
Sport-led Regeneration

- 2002 Commonwealth Games
- Builds on global football brands
- £200 on sports, £440 on non-sport
- Legacy questions



Salford Quays

- Long-term effort at trickle down
- Only takes off with arts-based iconic buildings
- Establishment of Media-cit and arrival of BBC



Retail Saves the Day?

One Way to Regenerate Manchester

- In 1996 an IRA bomb destroyed a large part of Manchester – no fatalities but widespread damage





Liverpool Accepts

- Liverpool 1 is a Grosvenor Development
- It is built of the malls without walls concept
- £900M investment, 30 new buildings,
150,000m²
- 2ha of urban park
- Connector to Albert Dock and river



Hidden Lessons

- Governance
- Retail
- Culture

Why Should Governance Matter?

- Manchester authorities played along with central government, formed AGMA (Association of Greater Manchester Authorities) and later GMCA (Greater Manchester Combined Authority), most rejected a mayoral system
- Merseyside battled central government and each other, but Liverpool City now has a mayor
- **Is innovation required to evolve governance systems?**

Retail; the Answer?

- Both cities have benefited from a revival in retail fortunes
- Manchester now suffering from an out-of-town development at Trafford
- Liverpool keeping its own customers for the first time in 25 years
- **Is it innovative to rely on retail to maintain economic fortunes?**

Culture the Cure?

- Both cities benefited from cultural injections at key moments
- Liverpool making more of a living as a destination city right now
- What importance can be placed on the cities' large student populations?
- Can cities innovate around new cultural experiences or is this ephemeral and vulnerable to fashion?

And Finally..

- How will we gauge the success of regeneration schemes when the criteria we use no longer fit new urban realities?

