

Campus Space, Facilities, and Services

Table of Contents

Campus Space, Facilities, and Services

Introduction

University Police, Clery Act Report

Facilities Operations

Utility Usage for the Pittsburgh Campus

Campus Recycling

Leadership in Energy and Environmental Design (LEED) Certification

Distribution of Students by Housing Type, Level, and Gender

Housing Capacity

Total Space in Square Footage by Division and Use Category

Net Assignable Space by Major Use and Division

Total Space in Square Footage by Division

by Use Category, University Owned

by Use Category, Leased Space

by A21 Utilization

by A21 Utilization, Owned Space

by A21 Utilization, Leased Space

by Building

Parking Capacity

Permit Parking Capacity by Lot

Permit Assignments by Relationship

Campus Map

Campus Space, Facilities, and Services

Data Sources:

Campus Map and LEED Certification: Campus Design and Facility Development

Campus Recycling, Facilities Operations, and Utility Usage: Facilities Management Services

Clery Act Report: University Police and Campus Security

Housing Capacity: Housing Services

Parking: Parking and Transportation Services

Square Footage: Property Accounting Services University Space Database

Definitions - Use Categories:

Building Support: The sum of all areas on all floors of a building not available for assignment to an occupant or for specific use, but necessary for the general operation of a building. Included should be space subdivisions of the three non-assignable space use categories-building service, circulation, and mechanical- that are used to support the building's general operation.

Classroom Facilities: General purpose classrooms, lecture halls, recitation rooms, seminar rooms, and other rooms used primarily for scheduled non-laboratory instruction

General Use Facilities: Comprise a campus general service or functional support system (assembly, exhibition, dining, relaxation, merchandising, recreation, general meetings, and day care)

Laboratory Facilities: Rooms characterized by special purpose equipment or a specific configuration that ties instructional or research activities to a particular discipline or a closely related group of disciplines

Leased: All facilities that the university leases

Office Facilities: Offices and conference rooms specifically assigned to each of the various academic, administrative, and service functions

Other: Includes health care facilities (rooms used to provide patient care that is located in separately organized health care facilities), unclassified areas (assignable areas that are inactive or unassigned; in the process of being altered, renovated, or converted), and non-assignable areas (areas of a building that are used to support the overall activities in that building - e.g., elevators, stairs, custodial closets, circulation, and mechanical areas)

Residential Facilities: Housing facilities for students, faculty, staff, and outside visitors to campus

Special Use Facilities: Rooms that are sufficiently specialized in their primary activity or function to merit a unique room code. Areas and rooms for military training, athletic activity, media production, clinical activities (outside of separately organized health care facilities), demonstration, agricultural field activities, and animal and plant shelters are included here

Study Facilities: Study rooms, open stack reading rooms, and library processing rooms

Support Facilities: These rooms provide centralized space for auxiliary support systems, which help keep all institutional programs and activities operational. Included in these areas are computer-based processing and telecommunications, shop services, general storage and supply, vehicle storage, central services (e.g. printing and duplicating, mail, shipping and receiving, environmental testing or monitoring, laundry, or food supplies), and hazardous materials areas.

University Controlled: As Occupied space, it is the area of space on temporary loan to the department from the university controlled space pool, this is usually short-term surge space, where occupying department assumes responsibility for upkeep and repair and is shown as users of the space for analyses' sake. As Unassigned space, it is space in the planning stage that has been taken off line or is being saved as surge space and is usually associated with the University Planning Department as University Controlled space.

Definitions - A21 Utilization:

Auxiliary Services: The auxiliary function is to be used in connection with all expense transactions under the university as auxiliary organizations. An auxiliary is defined as a self-supporting operating unit whose primary purpose is to provide goods, services, or groups of services in support of the university's education and research mission. These units are responsible for recovering both the direct and indirect costs associated with their operations through established pricing practices.

Building Support: See Definitions-Use Categories

Departmental Administration: Expenses that have been incurred for administrative and supporting services that benefit common or joint departmental activities or objectives in academic units, dean's offices, academic departments and divisions, and organized research units

General Administration: Expenses incurred for the central administrative offices of the President, Legal Counsel, Accounting, Payroll, etc. and other expenses of a general character which do not relate solely to any major function of the institution but effect the total institution (e.g., various general institutional accounts: audit fees, legal fees, etc.)

Instruction and Department Research: The teaching and training activities of an institution, whether they are offered for credits towards a degree or on a non-credit basis; whether they are offered through regular academic departments or separate divisions, such as summer school or an extension division. It also includes departmental research internally funded by restricted gifts, and university or departmental funds, if not separately budgeted and accounted for, sponsored research training grants are also considered to be instruction.

Library: Expenses that have been incurred in the operation of the library, including the cost of books and library materials purchased for the library. These expenses include the salaries and fringe benefits associated with the library.

Non-Assignable: Included should be space subdivisions (BOMA) of the three non-assignable room use categories (building service, circulation and mechanical) that are used to support the building's general operation

Operations and Maintenance of Plant: Expenses that have been incurred by a central service organization or at the departmental level for the administration, supervision, operation, maintenance, preservation, and protection of the institution's physical plant/facilities

Organized Research: Space used in conducting research and development activities FUNDED BY THIRD PARTIES, including activity supported by university cost sharing specifically identified to those contracts and grants. Sponsored research excludes community service programs, seminars, symposiums, etc., which are considered Other Sponsored Projects.

Other Institutional Activity: All activities within the institution except OR, IDR, or OSP. This type of space typically includes auxiliary services, development and university relations, and their associated storage and support. This category covers departments that do not support the instructional and research mission of the university and housing.

Other Sponsored Projects: Space used in conducting activities that are SPONSORED BY THIRD PARTIES (either Federal or non-Federal) including contract for service activities, community service programs, seminars, symposiums and conferences, etc. funded by third parties

Outside Agencies: Those activities that are controlled or operated by outside agencies but are housed or otherwise supported by the institution

Sponsored Projects Administration: Includes the costs of organizations established primarily to administer sponsored projects. This item would include the Office of Sponsored Research, Cost Analysis Department, Sponsored Projects Accounting, and some of the functions of the Provost's Office.

Student Services: Expenses that have been incurred for the administration of student affairs and for services to students

Unassigned: Space, which is in the planning stage, and has been taken off line or is being saved as surge space and is usually associated with University Planning as University Controlled Space

University Controlled: See Definitions-Use Categories

Other Definitions:

Housing Type:

University Housing: Carnegie Mellon-owned dormitories physically located on campus and Carnegie Mellon-controlled off campus housing

Fraternity and Sorority Housing: Fraternity- or sorority-controlled housing

Non-Carnegie Mellon Housing: All other student living arrangements

LEED Certification:

NC: New construction

CS: Core and shell

CI: Commercial interiors

PILOT Only: testing phase of requirements for a new LEED program

Utility Usage:

mWh: Megawatt hours

Tons: Short tons

Therms: 100,000 BTUs

mmBTUs: 1,000,000 BTUs

sf: Usable (interior) square feet

FTE: Full-time equivalent

Estimated gross square footage: as reported on the Facilities Management Services page represents the sum of all areas on all floors of a building included within the outside faces of its exterior walls, including all vertical penetration areas, for circulation and shaft areas that connect one floor to another. See Section 3.2.1 of the Postsecondary Education Facilities and Classification Manual (FICM), U.S. Department of Education, Institute for Education Sciences, NCES 2006-160, 2006. Where actual values are not available, it is estimated as the Net Assignable Square Feet + 11%.

The Clery Act requires colleges and universities to:

- Publish an annual report every year by October 1 that contains three years of campus crime statistics and certain campus security policy statements
- Publish an annual report every year by October 1 that contains three years of fire statistics (beginning in 2009) for on-campus student housing facilities and certain campus fire safety policy statements
- Disclose crime statistics for the campus, public areas immediately adjacent to or running through the campus, and certain non-campus facilities; the statistics must be gathered from campus police or security, local law enforcement, and other university officials who have "significant responsibility for student and campus activities"
- Provide "timely warning" notices of those crimes that have occurred and pose an ongoing "threat to students and employees"
- Disclose in a public crime log "any crime that occurred on campus or within the patrol jurisdiction of the campus police or the campus security department and is reported to the campus police or security department"
- Disclose in a public fire log any fire that occurred in an on campus student housing facility, by date the fire occurred

Criminal offenses, Carnegie Mellon campus and adjacent property

	2008	2009	2010
Murder	0	0	0
Negligent manslaughter	0	0	0
Robbery	2	2	1
Aggravated assault	1	0	2
Motor vehicle theft	0	1	3
Arson	0	0	1
Burglary	25	19	13
Sex offenses, forcible	5	6	1
Sex offenses, non-forcible	0	0	0
Liquor law arrests	34	56	35
Liquor law disciplinary actions	58	31	24
Drug law arrests	4	0	7
Drug law disciplinary actions	8	25	14
Illegal weapons arrests	0	0	0
Illegal weapons disciplinary actions	4	0	0

Services of the University Police

- | | |
|------------------------------|---|
| Criminal investigations | Escort and shuttle services |
| Emergency response | Event security |
| Crime and safety alerts | Lost and found |
| Crime prevention education | Rape aggression defense systems courses |
| Bike and laptop registration | Vehicle, bicycle, and foot patrols |

Facilities Management Services (FMS) Operations handles campus maintenance projects, preventative maintenance, and repairs. Their staff includes: air conditioning mechanics, carpenters, electricians, gardeners, laborers, locksmiths, masons, painters, plumbers, receivers, steamfitters, truck drivers, and vehicle mechanics.

Contracts

FMS Operations contracts for custodial services, elevator and roof maintenance, gutter cleaning, window washing, pest control, trash collection, recycling pickup, and other specialized projects. FMS receives a percentage management fee for services performed under the contracts it administers.

Services

FMS Operations provides services for water, sewer, electric, gas, steam, heating and chilled distribution, preventive maintenance, routine and emergency repairs, replacements, smaller scale renovations and new installations, carpentry, keys, locks, masonry, plastering and painting, re-lamping, plumbing, heating, cooling and lighting fixtures power wiring, landscaping, lawn care, litter and snow removal, and furniture moving and setups.

	2007	2008	2009	2010	2011
Facilities and staff					
Total estimated gross square footage	5,453,909	5,501,945	5,619,432	5,701,191	5,850,365
FTE maintenance services staff	89	94	94	98	100
FTE custodial services staff	124	122	122	114	114
Square feet per FTE maintenance services staff	61,522	58,750	59,781	58,175	58,504
Square feet per FTE custodian services staff	43,983	45,098	46,061	50,010	51,319
Grounds and maintenance					
Total campus acreage	144	145	143	144	145
FTE grounds services staff	13	13	12	12	12
Acres per grounds services staff	11	11	12	12	12
Work orders					
Number of work orders completed	53,208	53,611	55,712	61,066	60,070
Number of work orders per FTE staff	600	572	593	623	601

Utility Usage for the Pittsburgh Campus
Fiscal Years 2007 to 2011

www.cmu.edu/fms

	Units	2007	2008	2009	2010	2011
Non-renewable electricity	mWh	88,991	89,456	80,851	62,810	0
Renewable electricity RECs	mWh	11,250	13,750	22,424	44,320	115,775
Renewable electricity - tariff	mWh	5,379	5,407	5,344	7,693	0
Electricity Total	mWh	105,620	108,613	108,618	114,823	115,775
Percent renewable electricity	pct	15.7%	17.6%	25.6%	45.3%	100.0%
Steam - CMU	mmBTUs	333,762	359,062	367,736	384,538	387,840
Coal - CMU share of BBP total	Tons	10,743	11,275	10,976	0	0
Natural gas - CMU share of BBP total	DTherms	198,450	230,934	245,894	526,766	517,636
Input energy - CMU share of BBP total	mmBTUs	477,774	524,075	531,261	526,766	517,636
Overall plant efficiency	pct	69.9%	68.5%	69.2%	73.0%	74.9%
Natural gas	DTherms	51,077	57,428	60,238	57,507	67,575
Area served	Usable sf	4,724,720	4,762,215	4,754,805	4,986,790	5,002,209
Electricity (normalized)	kWh/sf	22.35	22.81	22.84	23.03	23.14
Heat sources (normalized)	BTU/sf	111.93	122.11	124.40	117.16	116.99
Pittsburgh FTE population		13,593	14,057	14,425	14,521	14,514
Electricity (normalized)	kWh/FTE	7,770	7,726	7,530	7,907	7,977
Heat sources (normalized)	mmBTU/FTE	38,907	41,367	41,005	40,236	40,320

Campus Recycling
Fiscal Years 2007 to 2011

The mission of the Green Practices Committee is to develop university practices that improve environmental quality, decrease waste, and conserve natural resources and energy, thereby establishing Carnegie Mellon as a model for other universities and organizations.

As part of the Carnegie Mellon strategic initiative to enhance the scope and impact of our education and research programs related to the environment, the Green Practices Committee was charged in April 1999 to develop a plan for an expanded environmental practices program on campus.

Green Practices subcommittees include:

- Transportation
- Built Environment
- Purchasing
- Marketing and Communications
- Energy
- Waste/Recycling and Dining
- Outdoor Environment

Recycled materials in tons	2007	2008	2009	2010	2011
Food waste (data not collected 2007-2008)	--	--	105.30	278.73	367.00
Cardboard	163.86	241.59	242.93	234.68	241.29
Mixed office paper	209.01	201.43	202.31	193.50	180.88
Plant materials	60.84	38.65	63.92	58.30	87.80
Beverage containers	90.84	95.57	103.01	86.85	87.19
Steel and bimetals	61.81	36.60	35.00	35.00	43.92
Computer equipment	19.71	29.00	18.50	38.90	34.43
Wood waste and pallets	55.00	41.25	51.00	51.00	31.50
Tubes, oil, paint, glycol, lead acid batteries	14.86	9.72	7.15	8.46	9.36
Textiles	3.14	3.14	3.00	3.00	3.00
Tires	0.97	1.75	2.91	3.21	2.04
Batteries (other than lead acid)	0.47	0.41	0.61	0.94	1.05
Other (cds, transparencies, toners)	2.35	0.08	0.19	1.55	0.92
Total recycled materials	682.86	699.19	835.83	994.12	1,090.38
Total waste generated (not including construction debris)	3,106.00	3,066.00	3,089.00	3,139.00	3,090.00
Percent recycled	18.02%	18.57%	21.30%	24.05%	26.08%

**Leadership in Energy and Environmental Design (LEED) Certification
Fall 2011**

The University has committed to adopting the Leadership in Energy and Environmental Design (LEED) green building rating system for all new construction and significant renovations. All such projects shall be designed and constructed so that they will meet the current version of the LEED for New Construction and Major Renovations (LEED-NC) standard. In addition the university has established the goal of achieving a minimum of a LEED Silver rating whenever possible.

Less extensive renovations shall utilize the LEED for Commercial Interiors (LEED-CI) rating system as applicable to their defined scope of work. For example, a project that is exclusively painting might only be eligible for a single LEED point under the Low-Emitting Materials, Paints, and Coatings section of the LEED-CI rating system and would be expected to meet the requirements for that point. As the scope of a project broadens, associated sections of LEED-CI would apply.

Building	LEED Rating	Year Certified	Square Footage
LEED Gold			
Carnegie Mellon Café	CI 2.0	2008	9,400
Collaborative Innovation Center	CS 1.0 (pilot only)	2005	136,000
GSIA West Entry Addition	CI 2.0	2010	5,000
Gates and Hillman Centers	NC 2.1	2011	208,000
LEED Silver			
300 South Craig Street	NC 2.1	2007	68,000
407 South Craig Street	NC 2.1	2007	12,000
Henderson House	NC 2.0	2004	15,770
Porter Hall 100	CI 2.0	2009	6,800
Stever House	NC 2.0	2003	71,140
Doherty Hall Phase II	CI 2.0	2010	170,700
LEED Certified			
Posner Center	NC 2.1	2005	11,400
LEED Registered (awaiting rating by USGBC)			
GSIA First Floor	CI 2.0		7,800
LEED Certified Total			714,210
LEED Registered Total			7,800
Campus Total			5,002,209
Percent of campus LEED Certified			14.28%
Percent of campus LEED Registered			0.16%
Green Roofs			Square Footage
Green roof trays			
Doherty Hall			444
Mellon Institute			2,800
Porter Hall			2,400
TOTAL			5,644
Green roofs			
Doherty Hall			5,000
Hammerschlag Hall			4,000
Gates and Hillman Centers			26,515
TOTAL			35,515
GRAND TOTAL			41,159

Distribution of Students by Housing Type, Level, and Gender
Fall Semester 2011

	University Housing	Fraternity and Sorority Housing	Total	Non-Carnegie Mellon Housing	Grand Total
First-year					
Male	868	2	870	55	925
Female	578	0	578	56	634
TOTAL	1,446	2	1,448	111	1,559
Sophomore					
Male	589	66	655	264	919
Female	399	56	455	189	644
TOTAL	988	122	1,110	453	1,563
Junior					
Male	367	81	448	394	842
Female	297	37	334	321	655
TOTAL	664	118	782	715	1,497
Senior					
Male	260	65	325	571	896
Female	210	51	261	402	663
TOTAL	470	116	586	973	1,559
Undergraduate Total					
Male	2,084	214	2,298	1,284	3,582
Female	1,484	144	1,628	968	2,596
TOTAL	3,568	358	3,926	2,252	6,178
Graduate					
Male	3	4	7	3,916	3,923
Female	1	0	1	1,853	1,854
TOTAL	4	4	8	5,769	5,777
Special					
Male	0	0	0	60	60
Female	0	0	0	43	43
TOTAL	0	0	0	103	103
All Levels					
Male	2,087	218	2,305	5,260	7,565
Female	1,485	144	1,629	2,864	4,493
GRAND TOTAL	3,572	362	3,934	8,124	12,058

**Housing Capacity
Fall Semester 2011**

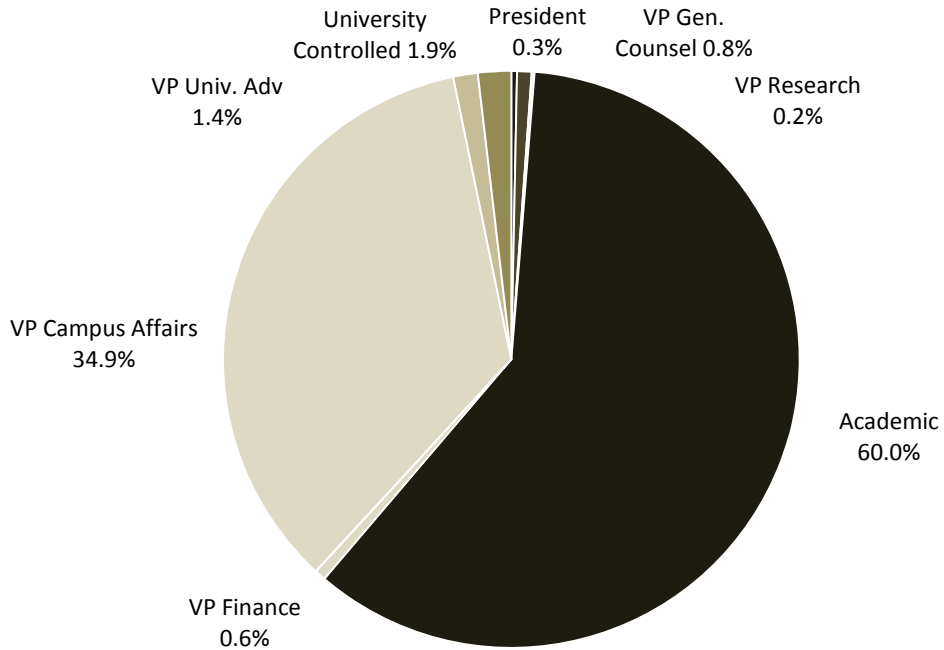
	Beds Available	Beds Filled
Boss Hall	72	71
Doherty Apartments	152	151
Donner Hall	239	238
Fairfax Apartments	343	340
Fraternities and Sororities	404	362
Hamerschlag House	167	167
Henderson Hall	60	59
Margaret Morrison Apartments	80	79
Margaret Morrison Special Interest Houses	96	93
McGill Hall	72	70
Morewood E-Tower	209	209
Morewood Gardens	455	453
Mudge House	308	305
Neville Apartments	24	24
Residence on Fifth	151	150
Resnik House	150	150
Roselawn Terrace	60	60
Scobell Hall	88	88
Shady Oaks Apartments	82	81
Shirley Apartments	41	38
Spirit House	6	6
Stever House	254	254
Webster Hall	260	251
Welch Hall	56	55
West Wing	146	145
Woodlawn Apartments	35	35
TOTAL	4,010	3,934

Total Space in Square Footage by Division and Use Category
as of June 30, 2011

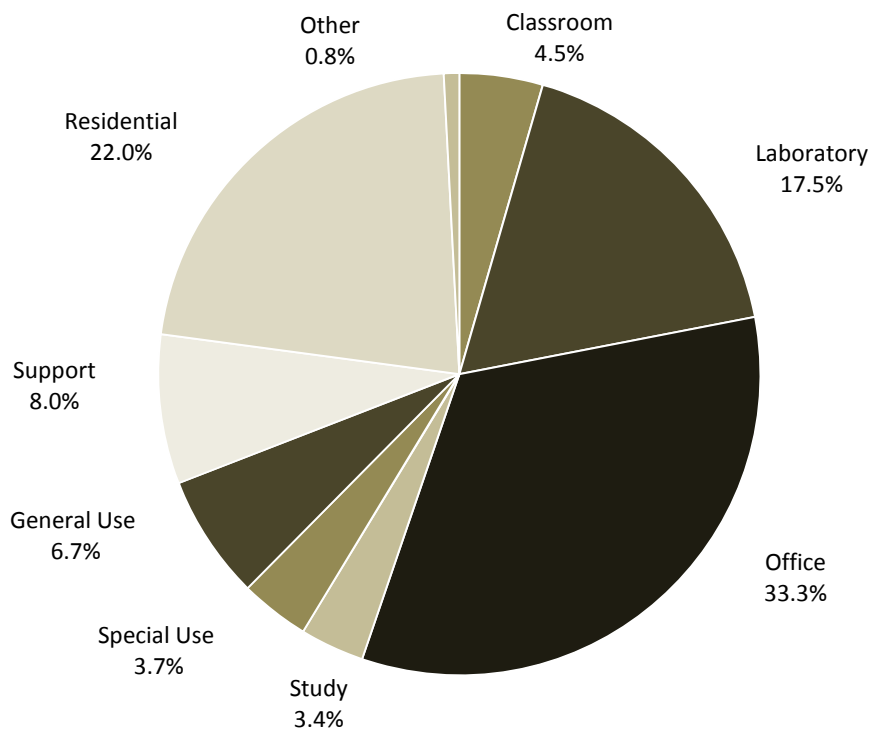
	Classroom Facilities	Laboratory Facilities	Office Facilities	Study Facilities	Special Use Facilities	General Use Facilities	Support Facilities	Residential Facilities	Other	Total
President	0	0	11,018	0	0	186	724	0	0	11,927
VP General Counsel	0	0	13,206	0	0	15,034	1,375	0	0	29,616
VP Research	0	0	5,313	0	0	0	264	0	0	5,577
Provost										
CIT	5,944	160,340	194,983	5,236	0	10,391	12,268	0	896	390,057
CFA	35,897	112,644	43,626	2,146	539	39,687	33,141	0	6,144	273,824
DC	3,268	29,960	122,775	2,495	66	5,701	2,148	0	62	166,474
HC	7,494	262	35,041	3,348	56	8,457	918	0	314	55,890
MCS	9,436	169,807	112,131	4,281	2,306	11,917	12,820	0	1,442	324,140
SCS	9,408	133,440	188,367	2,956	0	15,874	57,325	0	2,253	409,624
TSB	14,276	1,136	63,387	2,293	134	8,927	1,283	0	0	91,435
SEI	0	2,635	182,863	737	0	9,922	17,216	0	0	213,373
Qatar	150	0	4,097	0	0	88	226	0	0	4,561
Other Provost	6,627	23,449	88,216	97,039	84	7,967	48,529	0	782	272,693
TOTAL	92,500	633,673	1,035,486	120,531	3,185	118,931	185,874	0	11,893	2,202,071
VP Finance	0	0	22,308	0	0	0	854	0	0	23,162
VP Campus Affairs										
Campus Affairs Admin	69,012	0	6,641	0	0	1,467	269	0	0	77,390
Housing	0	0	11,183	972	0	8,820	1,793	694,095	182	717,046
Athletics	0	0	5,749	0	104,299	914	4,574	0	0	115,537
Other	2,781	842	47,709	5,132	6,937	99,427	97,694	98,160	13,455	372,138
TOTAL	71,793	842	71,282	6,104	111,236	110,628	104,330	792,255	13,637	1,282,111
VP Univ Advancement	0	685	48,098	0	670	0	1,012	0	0	50,465
University Controlled	0	6,686	16,111	0	21,686	1,098	72	17,299	5,149	68,101
Total Net Assignable Space	164,293	641,886	1,222,823	126,636	136,776	245,878	294,504	809,555	30,679	3,673,030
Building Support	0	0	0	0	0	0	0	0	1,329,179	1,329,179
GRAND TOTAL	164,293	641,886	1,222,823	126,636	136,776	245,878	294,504	809,555	1,359,857	5,002,209

Net Assignable Space by Major Use and Division
as of June 30, 2011

Net Assignable Space by Major Division



Net Assignable Space by Major Use



**Total University Owned Space in Square Footage by Division, and Use Category
as of June 30, 2011**

	Classroom Facilities	Laboratory Facilities	Office Facilities	Study Facilities	Special Use Facilities	General Use Facilities	Support Facilities	Residential Facilities	Other	Total
President	0	0	11,018	0	0	186	724	0	0	11,927
VP General Counsel	0	0	8,619	0	0	15,034	1,375	0	0	25,028
VP Research	0	0	5,313	0	0	0	264	0	0	5,577
Provost										
CIT	3,853	155,260	155,911	5,236	0	9,627	11,889	0	896	342,672
CFA	34,862	112,644	43,626	2,146	539	39,687	13,141	0	6,144	252,789
DC	3,268	27,711	119,771	2,495	66	5,701	2,148	0	62	161,221
HC	3,163	262	28,609	3,348	56	6,907	918	0	314	43,576
MCS	9,436	157,807	112,131	4,281	2,306	11,917	12,820	0	1,442	312,140
SCS	9,408	71,951	164,016	2,956	0	14,149	18,772	0	0	281,252
TSB	14,276	1,136	52,567	2,293	134	8,927	1,283	0	0	80,615
SEI	0	0	74,025	574	0	9,922	10,723	0	0	95,245
Qatar	150	0	4,050	0	0	88	226	0	0	4,514
Other Provost	6,627	23,449	76,764	97,039	84	7,768	43,768	0	782	256,281
TOTAL	85,043	550,220	831,470	120,368	3,185	114,693	115,688	0	9,640	1,830,305
VP Finance	0	0	22,308	0	0	0	854	0	0	23,162
VP Campus Affairs										
Campus Affairs Admin	69,012	0	6,641	0	0	1,467	269	0	0	77,390
Housing	0	0	11,183	972	0	8,820	1,793	564,562	182	587,513
Athletics	0	0	5,749	0	104,299	914	2,699	0	0	113,662
Other	2,781	842	47,709	5,132	6,937	99,427	97,694	98,160	13,455	372,138
TOTAL	71,793	842	71,282	6,104	111,236	110,628	102,455	662,722	13,637	1,150,703
VP Univ Advancement	0	685	8,970	0	670	0	1,012	0	0	11,337
University Controlled	0	5,307	14,154	0	21,686	1,098	72	17,299	5,149	64,765
Total Net Assignable Space	156,836	557,054	973,135	126,473	136,776	241,640	222,443	680,022	28,426	3,122,804
Building Support	0	0	0	0	0	0	0	0	1,307,669	1,307,669
GRAND TOTAL	156,836	557,054	973,135	126,473	136,776	241,640	222,443	680,022	1,336,094	4,430,473

**Total Leased Space in Square Footage by Division and Use Category
as of June 30, 2011**

	Classroom Facilities	Laboratory Facilities	Office Facilities	Study Facilities	Special Use Facilities	General Use Facilities	Support Facilities	Residential Facilities	Other	Total
President	0	0	0	0	0	0	0	0	0	0
VP General Counsel	0	0	4,587	0	0	0	0	0	0	4,587
VP Research	0	0	0	0	0	0	0	0	0	0
Provost										
CIT	2,091	5,081	39,072	0	0	764	378	0	0	47,385
CFA	1,035	0	0	0	0	0	20,000	0	0	21,035
DC	0	2,249	3,004	0	0	0	0	0	0	5,253
HC	4,331	0	6,432	0	0	1,550	0	0	0	12,313
MCS	0	12,000	0	0	0	0	0	0	0	12,000
SCS	0	61,489	24,351	0	0	1,725	38,554	0	2,253	128,372
TSB	0	0	10,820	0	0	0	0	0	0	10,820
SEI	0	2,635	108,838	163	0	0	6,493	0	0	118,129
Qatar	0	0	47	0	0	0	0	0	0	47
Other Provost	0	0	11,452	0	0	199	4,761	0	0	16,412
TOTAL	7,457	83,454	204,016	163	0	4,238	70,186	0	2,253	371,766
VP Finance	0	0	0	0	0	0	0	0	0	0
VP Campus Affairs										
Campus Affairs Admin	0	0	0	0	0	0	0	0	0	0
Housing	0	0	0	0	0	0	0	129,533	0	129,533
Athletics	0	0	0	0	0	0	1,875	0	0	1,875
Other	0	0	0	0	0	0	0	0	0	0
TOTAL	0	0	0	0	0	0	1,875	129,533	0	131,408
VP Univ Advancement	0	0	39,128	0	0	0	0	0	0	39,128
University Controlled	0	1,379	1,957	0	0	0	0	0	0	3,336
Total Net Assignable Space	7,457	84,833	249,688	163	0	4,238	72,060	129,533	2,253	550,225
Building Support	0	0	0	0	0	0	0	0	21,510	21,510
GRAND TOTAL	7,457	84,833	249,688	163	0	4,238	72,060	129,533	23,763	571,735

**Total Space in Square Footage by Division and A21 Utilization
as of June 30, 2011**

	Instruction and Department Research	Organized Research	Other Institutional Activity	Other Sponsored Projects	Operations and Maintenance of Plant	General Administration	Departmental Administration
President	109	0	1,007	0	0	10,644	167
VP General Counsel	0	0	12,304	0	3,094	14,217	0
VP Research	88	0	3,090	0	0	298	125
Provost							
CIT	144,258	180,276	2,678	1,053	0	206	54,851
CFA	235,329	4,213	9,425	1,875	0	0	17,747
DC	97,090	44,469	651	607	0	213	18,245
HC	35,340	733	291	505	0	20	16,662
MCS	136,829	136,441	4,966	7,423	0	0	24,300
SCS	73,027	272,596	1,360	2,631	0	0	56,262
TSB	52,713	2,339	3,240	0	0	0	21,455
SEI	0	210,370	3,003	0	0	0	0
Qatar	0	0	4,561	0	0	0	0
Other Provost	18,931	306	21,686	21,083	4,118	66,258	5,931
TOTAL	793,517	851,743	51,861	35,177	4,118	66,697	215,453
VP Finance	0	0	163	0	0	19,039	0
VP Campus Affairs							
Campus Affairs Admin	70,557	0	0	0	0	0	0
Housing	36	0	0	0	0	0	0
Athletics	6,570	0	0	0	0	0	0
Other	1,195	0	40,249	0	84,477	28,239	0
TOTAL	78,358	0	40,249	0	84,477	28,239	0
VP Univ Advancement	1,674	0	48,605	0	0	187	0
University Controlled	660	0	14,215	0	0	0	0
Total Net Assignable Space	874,407	851,743	171,494	35,177	91,689	139,320	215,743
Building Support	321	0	47	0	0	0	596
GRAND TOTAL	874,728	851,743	171,541	35,177	91,689	139,320	216,339

	Sponsored Projects Administration	Library	Student Services	Outside Agencies	Auxiliary Services	Unassigned	Non- assignable	Total
President	0	0	0	0	0	0	0	11,927
VP General Counsel	0	0	0	0	0	0	0	29,616
VP Research	1,976	0	0	0	0	0	0	5,577
Provost								
CIT	0	0	1,362	251	0	5,122	0	390,057
CFA	0	0	523	0	0	4,713	0	273,824
DC	218	0	1,401	0	0	3,580	0	166,474
HC	0	0	2,150	0	0	188	0	55,890
MCS	0	0	0	597	0	11,417	2,168	324,140
SCS	0	0	370	0	0	3,378	0	409,624
TSB	134	0	10,017	0	0	1,537	0	91,435
SEI	0	0	0	0	0	0	0	213,373
Qatar	0	0	0	0	0	0	0	4,561
Other Provost	0	115,855	14,343	0	3,743	440	0	272,693
TOTAL	352	115,855	30,166	848	3,743	30,375	2,168	2,202,071
VP Finance	3,833	0	0	0	0	127	0	23,162
VP Campus Affairs								
Campus Affairs Admin	0	0	6,833	0	0	0	0	77,390
Housing	0	0	0	0	705,904	11,106	0	717,046
Athletics	0	0	102,646	0	6,321	0	0	115,537
Other	0	0	25,680	0	181,821	4,380	6,098	372,138
TOTAL	0	0	135,159	0	894,046	15,486	6,098	1,282,111
VP Univ Advancement	0	0	0	0	0	0	0	50,465
University Controlled	0	0	0	21,606	0	31,620	0	68,101
Total Net Assignable Space	6,162	115,855	165,323	22,455	897,788	77,608	8,266	3,673,030
Building Support	0	0	196	0	0	389	1,327,630	1,329,179
GRAND TOTAL	6,162	115,855	165,519	22,455	897,788	77,997	1,335,896	5,002,209

**Total University Owned Space in Square Footage by Division and A21 Utilization
as of June 30, 2011**

	Instruction and Department Research	Organized Research	Other Institutional Activity	Other Sponsored Projects	Operations and Maintenance of Plant	General Administration	Departmental Administration
President	109	0	1,007	0	0	10,644	167
VP General Counsel	0	0	11,641	0	3,094	10,293	0
VP Research	88	0	3,090	0	0	298	125
Provost							
CIT	127,045	156,729	2,500	494	0	190	49,159
CFA	214,294	4,213	9,425	1,875	0	0	17,747
DC	94,631	41,880	651	607	0	213	18,041
HC	23,907	733	291	505	0	20	15,782
MCS	136,829	124,441	4,966	7,423	0	0	24,300
SCS	69,509	177,145	1,360	55	0	0	31,688
TSB	41,893	2,339	3,240	0	0	0	21,455
SEI	0	92,241	3,003	0	0	0	0
Qatar	0	0	4,514	0	0	0	0
Other Provost	18,931	306	17,679	21,083	4,118	53,852	5,931
TOTAL	727,039	600,027	47,629	32,042	4,118	54,275	184,103
VP Finance	0	0	163	0	0	19,039	0
VP Campus Affairs							
Campus Affairs Admin	70,557	0	0	0	0	0	0
Housing	36	0	0	0	0	0	0
Athletics	6,570	0	0	0	0	0	0
Other	1,195	0	40,249	0	84,477	28,239	0
TOTAL	78,358	0	40,249	0	84,477	28,239	0
VP Univ Advancement	1,674	0	9,477	0	0	187	0
University Controlled	660	0	12,501	0	0	0	0
Total Net Assignable Space	807,928	600,028	125,758	32,041	91,689	122,975	184,392
Building Support	321	0	47	0	0	0	596
GRAND TOTAL	808,249	600,028	125,805	32,041	91,689	122,975	184,988

	Sponsored Projects		Student	Outside	Auxiliary		Non-	
	Administration	Library	Services	Agencies	Services	Unassigned	assignable	Total
President	0	0	0	0	0	0	0	11,927
VP General Counsel	0	0	0	0	0	0	0	25,028
VP Research	1,976	0	0	0	0	0	0	5,577
Provost								
CIT	0	0	1,362	179	0	5,015	0	342,672
CFA	0	0	523	0	0	4,713	0	252,789
DC	218	0	1,401	0	0	3,580	0	161,221
HC	0	0	2,150	0	0	188	0	43,576
MCS	0	0	0	597	0	11,417	2,168	312,140
SCS	0	0	370	0	0	1,125	0	281,252
TSB	134	0	10,017	0	0	1,537	0	80,615
SEI	0	0	0	0	0	0	0	95,245
Qatar	0	0	0	0	0	0	0	4,514
Other Provost	0	115,855	14,343	0	3,743	440	0	256,281
TOTAL	352	115,855	30,166	776	3,743	28,015	2,168	1,830,305
VP Finance	3,833	0	0	0	0	127	0	23,162
VP Campus Affairs								
Campus Affairs Admin	0	0	6,833	0	0	0	0	77,390
Housing	0	0	0	0	576,371	11,106	0	587,513
Athletics	0	0	100,771	0	6,321	0	0	113,662
Other	0	0	25,680	0	181,821	4,380	6,098	372,138
TOTAL	0	0	133,284	0	764,513	15,486	6,098	1,150,703
VP Univ Advancement	0	0	0	0	0	0	0	11,337
University Controlled	0	0	0	19,984	0	31,620	0	64,765
Total Net Assignable Space	6,162	115,855	163,450	20,760	768,255	75,247	8,266	3,122,804
Building Support	0	0	196	0	0	389	1,306,120	1,307,669
GRAND TOTAL	6,162	115,855	163,644	20,760	768,255	75,636	1,314,386	4,430,473

**Total Leased Space in Square Footage by Division and A21 Utilization
as of June 30, 2011**

	Instruction and Department Research	Organized Research	Other Institutional Activity	Other Sponsored Projects	Operations and Maintenance of Plant	General Administration	Departmental Administration
President	0	0	0	0	0	0	0
VP General Counsel	0	0	663	0	0	3,924	0
VP Research	0	0	0	0	0	0	0
Provost							
CIT	17,213	23,547	178	559	0	15	5,693
CFA	21,035	0	0	0	0	0	0
DC	2,459	2,589	0	0	0	0	204
HC	11,433	0	0	0	0	0	880
MCS	0	12,000	0	0	0	0	0
SCS	3,518	95,450	0	2,576	0	0	24,574
TSB	10,820	0	0	0	0	0	0
SEI	0	118,129	0	0	0	0	0
Qatar	0	0	47	0	0	0	0
Other Provost	0	0	4,007	0	0	12,405	0
TOTAL	66,478	251,715	4,232	3,135	0	12,420	31,351
VP Finance	0	0	0	0	0	0	0
VP Campus Affairs							
Campus Affairs Admin	0	0	0	0	0	0	0
Housing	0	0	0	0	0	0	0
Athletics	0	0	0	0	0	0	0
Other	0	0	0	0	0	0	0
TOTAL	0	0	0	0	0	0	0
VP Univ Advancement	0	0	39,128	0	0	0	0
University Controlled	0	0	1,714	0	0	0	0
Total Net Assignable Space	66,479	251,715	45,737	3,135	0	16,345	31,351
Building Support	0	0	0	0	0	0	0
GRAND TOTAL	66,479	251,715	45,736	3,135	0	16,345	31,351

	Sponsored Projects	Library	Student Services	Outside Agencies	Auxiliary Services	Unassigned	Non- assignable	Total
President	0	0	0	0	0	0	0	0
VP General Counsel	0	0	0	0	0	0	0	4,587
VP Research	0	0	0	0	0	0	0	0
Provost								
CIT	0	0	0	72	0	108	0	47,385
CFA	0	0	0	0	0	0	0	21,035
DC	0	0	0	0	0	0	0	5,253
HC	0	0	0	0	0	0	0	12,313
MCS	0	0	0	0	0	0	0	12,000
SCS	0	0	0	0	0	2,253	0	128,372
TSB	0	0	0	0	0	0	0	10,820
SEI	0	0	0	0	0	0	0	118,129
Qatar	0	0	0	0	0	0	0	47
Other Provost	0	0	0	0	0	0	0	16,412
TOTAL	0	0	0	72	0	2,361	0	371,766
VP Finance	0	0	0	0	0	0	0	0
VP Campus Affairs								
Campus Affairs Admin	0	0	0	0	0	0	0	0
Housing	0	0	0	0	129,533	0	0	129,533
Athletics	0	0	1,875	0	0	0	0	1,875
Other	0	0	0	0	0	0	0	0
TOTAL	0	0	1,875	0	129,533	0	0	131,408
VP Univ Advancement	0	0	0	0	0	0	0	39,128
University Controlled	0	0	0	1,622	0	0	0	3,336
Total Net Assignable Space	0	0	1,875	1,694	129,533	2,361	0	550,225
Building Support	0	0	0	0	0	0	21,510	21,510
GRAND TOTAL	0	0	1,875	1,694	129,533	2,361	21,510	571,735

Total Space in Square Footage by Division and Building
as of June 30, 2011

	300 S. Craig	407-409 S. Craig	4615 Forbes	4616 Henry	Alumni House	Baker/Porter	Bramer	CFA	Cyert	Doherty	FMS Bldg	Gates and Hillman	Gesling Field	GSIA	Gym
President	0	0	0	0	0	109	665	0	0	0	0	0	0	0	0
VP General Counsel	0	0	0	0	0	14	0	0	290	0	1,234	0	0	0	0
VP Research	0	0	3,090	0	0	0	0	0	69	0	0	0	0	0	0
Provost															
CIT	0	0	0	16,366	0	44,813	0	0	1,456	67,276	0	0	0	0	0
CFA	0	0	0	0	0	5,560	0	83,496	0	29,412	0	0	0	0	3,177
DC	1,475	0	0	0	0	113,039	0	0	0	3,551	7,329	0	0	0	0
HC	0	0	0	0	0	0	0	0	0	0	0	0	0	0	0
MCS	22,383	0	0	0	0	0	0	0	0	55,065	0	0	0	0	0
SCS	17,561	5,102	0	0	0	0	0	0	96	0	724	110,236	0	0	0
TSB	0	0	0	0	0	0	0	0	0	0	0	0	0	80,615	0
SEI	0	0	0	0	0	0	0	0	0	0	0	0	0	0	0
Qatar	0	0	179	0	0	640	0	0	727	0	0	0	0	196	0
Other Provost	276	4,352	2,633	182	294	4,472	3,031	2,624	38,581	1,111	587	1,519	1,721	138	57
TOTAL	41,695	9,454	2,812	16,548	294	168,524	3,031	86,120	40,860	156,415	8,640	111,755	1,721	80,949	3,234
VP Finance	0	0	0	0	0	0	0	0	275	0	0	0	0	0	0
VP Campus Affairs															
Campus Affairs Admin	0	0	0	0	0	22,538	0	639	92	11,745	0	6,187	0	0	0
Housing	0	0	0	0	0	0	0	0	0	0	0	0	0	0	0
Athletics	0	0	0	0	0	0	0	0	0	0	0	0	3,442	0	51,857
Other	5,714	225	8,931	6,460	0	1,232	225	888	241	0	22,488	1,443	5,642	1,317	57
TOTAL	5,714	225	8,931	6,460	0	23,770	225	1,527	333	11,745	22,488	7,630	9,084	1,317	51,914
VP Univ Advancement	0	0	0	0	6,207	0	0	0	0	0	0	0	0	0	0
University Controlled	492	0	19,327	0	0	0	0	0	570	320	0	0	0	0	0
Total Net Assignable Space	47,901	9,679	34,161	23,007	6,501	192,417	3,921	87,647	42,397	168,479	32,363	119,385	10,805	82,266	55,148
Building Support	34,794	1,521	7,004	2,254	1,736	70,608	801	36,250	22,067	96,679	15,252	80,524	6,125	46,590	8,159
GRAND TOTAL	82,695	11,200	41,165	25,261	8,237	263,025	4,722	123,897	64,464	265,158	47,615	199,909	16,930	128,856	63,307

	Hamburg	Hamer- schlag	Hunt Library	Margaret Morrison	Mellon Institute	Newell- Simon	Penn Ave	PTC	Posner Center	Purnell	Roberts	Scaife	SEI	Smith
President	0	0	0	0	0	0	0	0	7,288	0	0	0	0	0
VP General Counsel	0	0	0	0	1,809	0	0	0	0	0	0	0	0	0
VP Research	163	0	0	0	0	0	0	0	0	0	0	0	0	0
Provost														
CIT	21,671	78,571	0	0	1,436	0	0	15,705	0	0	35,297	20,404	0	2,466
CFA	0	0	0	62,477	0	0	4,222	0	0	62,901	0	0	0	0
DC	0	0	0	9,822	13,351	0	0	0	0	0	0	0	0	0
HC	43,576	0	0	0	0	0	0	0	0	0	0	0	0	0
MCS	0	0	0	0	171,336	0	0	3,326	0	0	0	0	0	0
SCS	0	1,411	0	0	0	98,418	0	0	0	0	0	0	0	12,695
TSB	0	0	0	0	0	0	0	0	0	0	0	0	0	0
SEI	0	0	0	0	0	0	0	0	0	0	0	0	95,245	0
Qatar	0	0	0	0	0	0	0	0	0	0	0	0	0	0
Other Provost	70	79	79,608	87	12,750	0	34,554	23,600	942	479	408	153	107	0
TOTAL	65,317	80,061	79,608	72,386	198,873	98,418	38,776	42,631	942	63,380	35,705	20,557	95,352	15,161
VP Finance	0	0	0	0	0	0	0	0	0	0	0	0	0	0
VP Campus Affairs														
Campus Affairs Admin	4,733	1,783	0	2,882	1,642	0	0	0	0	0	0	5,118	0	0
Housing	0	0	0	0	0	0	414	0	0	0	0	0	0	0
Athletics	0	0	0	0	0	0	0	0	0	0	0	0	0	0
Other	1,141	702	858	347	3,640	1,301	61,877	209	0	154	0	0	0	0
TOTAL	5,874	2,485	858	3,229	5,282	1,301	62,291	209	0	154	0	5,118	0	0
VP Univ Advancement	0	0	0	0	1,674	0	0	0	0	0	0	0	0	0
University Controlled	0	0	0	0	2,127	0	3,139	6,200	0	0	2,014	0	0	0
Total Net Assignable Space	71,353	82,544	80,466	75,615	209,765	99,719	104,206	49,039	8,230	63,533	37,718	25,675	95,351	15,161
Building Support	31,221	39,558	19,720	33,300	146,257	54,597	4,409	31,570	1,407	41,756	26,882	11,224	37,047	6,040
GRAND TOTAL	102,574	122,102	100,186	108,915	356,022	154,316	108,615	80,609	9,637	105,289	64,600	36,899	132,398	21,201

	UC	UTDC	Warner	Wean	Whitfield	Housing	Other	CIC Leased	NREC Leased	SEI Leased	Housing Leased	Other Leased	Total
President	0	98	3,447	321	0	0	0	0	0	0	0	0	11,927
VP General Counsel	622	701	1,220	51	8,419	0	10,668	0	0	0	0	4,587	29,616
VP Research	0	0	2,256	0	0	0	0	0	0	0	0	0	5,577
Provost													
CIT	0	0	0	37,211	0	0	0	27,169	0	0	0	20,216	390,057
CFA	0	0	0	915	0	0	629	0	0	0	0	21,035	273,824
DC	0	0	0	12,654	0	0	0	0	0	0	0	5,253	166,474
HC	0	0	0	0	0	0	0	0	0	0	0	12,313	55,890
MCS	0	0	0	60,030	0	0	0	0	0	0	0	12,000	324,140
SCS	0	0	0	33,509	0	0	1,501	2,889	75,914	0	0	49,569	409,624
TSB	0	0	0	0	0	0	0	0	0	0	0	10,820	91,435
SEI	0	0	0	0	0	0	0	41,361	0	23,041	0	53,726	213,373
Qatar	0	2,723	0	0	49	0	0	0	0	0	0	47	4,561
Other Provost	561	291	11,629	23,380	72	0	5,934	241	0	0	0	16,171	272,693
TOTAL	561	3,014	11,629	167,699	121	0	8,064	71,660	75,914	23,041	0	201,150	2,202,071
VP Finance	0	22,217	670	0	0	0	0	0	0	0	0	0	23,162
VP Campus Affairs													
Campus Affairs Admin	0	0	6,740	13,290	0	0	0	0	0	0	0	0	77,390
Housing	0	0	0	0	0	564,562	22,536	0	0	0	129,533	0	717,046
Athletics	45,471	0	0	0	0	0	12,891	0	0	0	0	1,875	115,537
Other	92,049	1,018	5,845	2,733	0	98,160	47,243	0	0	0	0	0	372,138
TOTAL	137,520	1,018	12,585	16,023	0	662,722	82,670	0	0	0	129,533	1,875	1,282,111
VP Univ Advancement	0	0	3,456	0	0	0	0	0	0	0	0	39,128	50,465
University Controlled	611	0	0	805	0	17,299	11,862	0	1,714	0	0	1,622	68,101
Total Net Assignable Space	139,313	27,047	35,265	184,900	8,540	680,022	113,265	71,661	77,628	23,041	129,533	248,362	3,673,030
Building Support	74,889	7,603	10,680	109,779	3,808	0	185,559	0	16,753	0	0	4,757	1,329,179
GRAND TOTAL	214,202	34,650	45,945	294,679	12,348	680,022	298,824	71,661	94,381	23,041	129,533	253,119	5,002,209

Parking Capacity
Fall Semesters 2007 to 2011

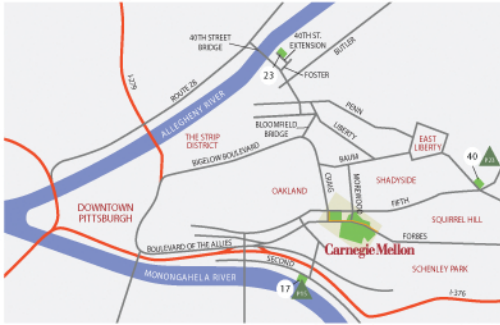
	2007	2008	2009	2010	2011
Permit Parking	2,694	2,624	2,876	2,873	2,691
Visitor Parking	272	272	272	272	272
Meter Parking	46	46	46	46	34
Utility Parking	28	28	28	28	28
Campus Street	301	301	301	301	301
TOTAL	3,341	3,271	3,523	3,520	3,326

Permit Parking Capacity by Lot
Fall Semesters 2007 to 2011

	2007	2008	2009	2010	2011
300 S. Craig	15	15	15	15	15
6555 Penn Avenue	40	40	40	40	40
Alumni House	17	17	17	17	0
Bramer House	8	8	8	8	8
Children's School	15	15	15	15	15
Collaborative Innovation Center	66	66	66	66	85
College of Fine Arts	60	60	60	60	55
Dithridge Street Garage	350	350	350	350	350
Doherty Hall	120	120	120	120	119
East Campus Garage	770	770	770	770	770
Fraternities	75	75	75	75	75
Frew Street	9	9	9	9	9
Gates Garage	0	0	150	147	147
GATF - Filmore	0	0	72	72	69
Hamburg Hall	25	25	25	25	25
Henry Street	9	9	9	9	9
Junction Hollow	0	0	0	0	0
Margaret Morrison Street	0	0	0	0	0
Morewood	868	798	798	798	637
Pittsburgh Technology Center	91	91	91	91	91
Porter-Hamerschlag-Wean	60	60	60	60	60
Sororities	25	25	25	25	22
Warner	10	10	10	10	10
West Campus	11	11	11	11	0
Whitfield Hall	50	50	50	50	50
Zebina Way	0	0	30	30	30
TOTAL	2,694	2,624	2,876	2,873	2,691

Permit Assignments by Relationship
Fall Semesters 2007 to 2011

	2007	2008	2009	2010	2011
Faculty and Staff	2,251	2,000	2,025	1,958	2,598
Students	416	140	305	256	289
Non-Carnegie Mellon	10	10	28	71	51
TOTAL	2,677	2,150	2,358	2,285	2,938



○ ACADEMIC/ADMINISTRATIVE

- 1 Alumni House
- 2 Art Park
- 3a Baker Hall (H&SS)
- 3b Porter Hall
- 4 Bramer House
- 5 Collaborative Innovation Center (CIC)
- 6 College of Fine Arts (CFA)
- 7 Cyert Hall
- 8 Doherty Hall
- 9 Facilities Management Services Building
- 10a Gates Center for Computer Science (SCS)
- 10b Hillman Center for Future-Generation Technologies (SCS)
- 11 Hamburg Hall (Heinz)
- 12 Harnischlag Hall

◆ RESIDENTIAL

- 13 Hunt Library
- 14 Margaret Morrison Carnegie Hall
- 15 Mellon Institute (MCS)
- 16 Newell-Simon Hall (SCS)
- 17 Pittsburgh Technology Center* (ETC)
- 18 Posner Center
- 19 Posner Hall (Tepper)
- 20 Purnell Center for the Arts
- 21 Rand Building
- 22 Roberts Engineering Hall
- 23 Robotics Engineering Consortium* (NREC)
- 24 Scaife Hall (CIT)
- 25 Skibo Gymnasium
- 26 Smith Hall
- 27 Software Engineering Institute (SEI)
- 28 Solar Decathlon House
- 29 University Center
- 30 Warner Hall (Office of Admission)
- 31 Wean Hall
- 32 Whitfield Hall (HR)
- 33 300 South Craig (Police)
- 34 311 South Craig
- 35 407 South Craig
- 36 4516 Henry (UTDC)
- 37 4609 Henry (H&SS Grad Labs)
- 38 4615 Forbes
- 39 4616 Henry (IND)
- 40 6555 Penn*
- 41 Boss House
- 42 Doherty Apartments
- 43 Donner House
- 44 Fairfax Apartments
- 45 Fraternity Quadrangle
- 46 Harnischlag House
- 47 Henderson House
- 48 London Terrace Apartments
- 49 Margaret Morrison Apartments/Plaza
- 50 Margaret Morrison Sorority Houses
- 51 McGill House
- 52 Morewood Gardens (Housing Offices)
- 53 Mudge House
- 54 Resnik House & Tartans Pavilion
- 55 Roselawn Houses
- 56 Scobell House
- 57 Shady Oak Apartments
- 58 Shirley Apartments
- 59 Spirit House
- 60 Stever House
- 61 Tech House
- 62 The Residence on Fifth
- 63 Webster Hall
- 64 Welch House
- 65 West Wing
- 66 Woodlawn Apartments
- 67 99 Gladstone
- 68 1094 Devon

▲ PARKING

- P1 Alumni House***
- P2 Bramer House***
- P3 Children's School
- P4 CIC Garage******
- P5 Dithridge Street Garage**
- P6 Doherty Apartments***
- P7 East Campus Garage******
- P8 Fine Arts
- P9 Fraternities
- P10 Gates Garage******
- P11 GATF
- P12 Hamburg Hall***
- P13 Henry Street
- P14 Morewood******
- P15 Pittsburgh Technology Center* (ETC)
- P16 Porter-Harnischlag-Wean
- P17 Sororities
- P18 Warner
- P19 West Campus
- P20 Whitfield Hall
- P21 Zebina Way**
- P22 4700 Fifth Avenue
- P23 6555 Penn**
- P24 300 South Craig

- * Off campus, see inset
- ** Open to visitors 9 a.m.-5 p.m. Monday - Friday
- *** Open to visitors after 5 p.m. and weekends
- **** City parking meters

Additional on-street parking available on city streets.

Primary circulation routes and access parking areas are shown.



- Academic/Administrative Buildings
- ◆ Residential Buildings
- ▲ Parking
- ? Information Desk
- ♿ Accessible Parking
- 🚌 Bus Stop
- 🚶 Walkways
- 🍴 Dining
- 🏥 Health Services
- 👮 University Police



Revised September 2010

Campus Map