

SPACE AND FACILITIES

Table of Contents

Space and Facilities

Total Space in Square Footage by Major Division, College/Division, as of June 30, 2005:	
by Use Category	7.3
by A21 Utilization	7.4
by Building	7.6
Net Assignable Space by Major Use & Division, as of June 30, 2005	7.10
Parking Capacity, Fiscal Years 2005 to 2006	7.11
Housing Capacity by Beds Available & Beds Filled, Fall Semester 2005	7.11
Current Campus Map 2006	7.13

**TOTAL SPACE IN SQUARE FOOTAGE
BY MAJOR DIVISION, COLLEGE/DIVISION & USE CATEGORY
AS OF JUNE 30, 2005**

	Use Category										TOTAL
	Classroom Facilities	Laboratory Facilities	Office Facilities	Study Facilities	Special Use Facilities	General Use Facilities	Support Facilities	Residential Facilities	Other	Leased ¹	
President	0	0	12,096	0	0	187	55	0	0	0	12,338
VP General Counsel	207	0	6,314	150	0	15,044	4,556	0	0	0	26,272
Provost											
CIT	3,283	144,133	138,953	4,828	0	7,137	11,037	0	325	1,467	311,164
CFA	37,930	112,362	47,788	1,621	191	37,425	14,103	49	0	26,583	278,051
Heinz	1,513	656	35,040	3,615	56	3,444	898	0	314	1,650	47,188
H&SS	2,567	24,079	88,386	1,599	237	3,096	1,140	0	97	1,917	123,118
MCS	8,716	163,799	88,682	3,431	2,330	10,674	14,207	0	1,245	12,000	305,084
SCS	7,872	56,460	125,732	302	135	5,943	12,886	0	0	75,272	284,602
Tepper	13,678	2,668	48,850	2,335	0	8,048	1,838	0	0	7,770	85,186
SEI	0	0	116,396	2,034	3,037	6,177	11,211	0	0	40,778	179,633
Other Provost	8,165	20,087	108,425	103,449	856	10,936	71,283	0	1,352	20,937	345,490
Total	83,724	524,244	798,252	123,214	6,842	92,880	138,603	49	3,333	188,374	1,959,516
VP Finance	0	0	29,345	3,538	1,489	10,275	55,850	0	741	0	101,238
VP Enrollment											
Enrollment Services Admin	61,480	0	6,652	0	0	1,470	191	0	0	0	69,794
Housing	0	0	3,352	1,573	0	9,506	11,589	494,790	1,770	222,332	744,913
Athletics	0	0	4,690	0	107,720	953	2,931	0	0	1,875	118,169
Other	0	0	30,532	1,500	4,155	80,642	15,207	112,602	8,473	9,560	262,671
Total	61,480	0	45,226	3,073	111,875	92,571	29,918	607,392	10,243	233,767	1,195,547
VP Univ Advancement	507	0	13,003	0	0	0	3,270	0	0	32,299	49,078
Total University	145,918	524,244	904,236	129,975	120,206	210,957	232,252	607,441	14,317	454,440	3,343,989
University Controlled	0	529	8,639	0	13,437	358	3,988	0	85,979	10,953	123,883
Total Net Assignable Space	145,918	524,773	912,875	129,975	133,643	211,315	236,240	607,441	100,296	465,393	3,467,872
Building Support	0	0	0	0	0	0	0	0	1,193,765	17,521	1,211,286
TOTAL	145,920	524,773	912,876	129,975	133,643	211,314	236,241	607,441	1,294,061	482,913	4,679,157

1. The National Robotics Engineering Consortium (NREC) and the Software Engineering Institute (SEI) Building are not included in the "leased" use category. These buildings are counted among Carnegie Mellon buildings within the appropriate use category.

**TOTAL SPACE IN SQUARE FOOTAGE
BY MAJOR DIVISION, COLLEGE/DIVISION & A21 UTILIZATION
AS OF JUNE 30, 2005**

A21 Utilization

	Instruc- tion & Dept Research	Organ- ized Research	Other Institu- tional Activity	Other Spon- sored Projects	Opera- tions & Mainte- nance of Plant	General Admin- istration	Depart- mental Adminis- tration
President	109	0	1,392	0	0	10,838	0
VP General Counsel	0	0	542	0	0	10,739	0
Provost							
CIT	104,861	153,860	2,930	1,501	0	0	41,286
CFA	243,065	4,912	10,197	3,531	0	0	15,204
Heinz	28,039	3,164	648	229	0	0	14,651
H&SS	72,584	33,777	482	213	0	0	12,992
MCS	129,108	143,314	1,673	4,606	0	0	21,365
SCS	54,720	193,390	572	2,007	0	0	22,717
Tepper	52,997	3,128	2,728	0	0	0	13,223
SEI	0	179,633	0	0	0	0	0
Other Provost	23,387	36,731	21,224	22,379	39,759	52,249	16,758
Total	708,761	751,909	40,454	34,466	39,759	52,249	158,196
VP Finance	2,046	0	8,202	0	47,494	24,786	0
VP Enrollment							
Enrollment Services Admin	30,891	0	0	0	0	0	0
Housing	36	0	0	0	0	0	0
Athletics	8,554	0	0	0	0	0	0
Other	1,195	0	27,648	0	2,950	20,254	0
Total	40,676	0	27,648	0	2,950	20,254	0
VP Univ Advancement	0	0	46,326	0	0	2,753	0
Total University	751,592	751,909	124,564	34,466	90,203	121,619	158,196
University Controlled	0	202	12,766	0	0	1,698	0
Total Net Assignable Space	751,592	752,111	137,330	34,466	90,203	123,317	158,196
Building Support	54	0	260	0	56	0	0
TOTAL	751,645	752,110	137,588	34,465	90,259	123,316	158,197

**TOTAL SPACE IN SQUARE FOOTAGE
BY MAJOR DIVISION, COLLEGE/DIVISION & A21 UTILIZATION (Cont.)
AS OF JUNE 30, 2005**

A21 Utilization

	Spon- sored Projects		Student	Outside	Auxiliary	Un-	Non-	
	Admin- istration	Library	Services	Agencies	Services	assigned	Assign- able	TOTAL
President	0	0	0	0	0	0	0	12,338
VP General Counsel	0	0	0	0	14,991	0	0	26,272
Provost								
CIT	0	0	176	122	0	6,429	0	311,164
CFA	0	62	356	0	0	725	0	278,051
Heinz	0	0	239	155	0	64	0	47,188
H&SS	0	0	1,685	0	0	1,384	0	123,118
MCS	0	0	0	336	0	4,682	0	305,084
SCS	0	0	304	0	0	10,893	0	284,602
Tepper	0	0	11,841	34	0	1,234	0	85,186
SEI	0	0	0	0	0	0	0	179,633
Other Provost	2,155	121,517	1,186	0	5,525	2,620	0	345,490
Total	2,155	121,579	15,787	647	5,525	28,031	0	1,959,516
VP Finance	3,634	0	0	0	14,559	518	0	101,238
VP Enrollment								
Enrollment Services Admin	0	0	38,903	0	0	0	0	69,794
Housing	0	0	0	0	744,877	0	0	744,913
Athletics	0	0	108,863	0	752	0	0	118,169
Other	0	0	36,185	0	172,473	0	1,966	262,671
Total	0	0	183,951	0	918,102	0	1,966	1,195,547
VP Univ Advancement	0	0	0	0	0	0	0	49,078
Total University	5,789	121,579	199,738	647	953,177	28,549	1,966	3,343,989
University Controlled	0	0	0	7,781	0	101,435	0	123,883
Total Net Assignable Space	5,789	121,579	199,738	8,428	953,177	129,984	1,966	3,467,872
Building Support	0	0	0	0	1,272	10,274	1,199,370	1,211,286
TOTAL	5,788	121,579	199,739	8,428	954,448	140,258	1,201,336	4,679,157

**TOTAL SPACE IN SQUARE FOOTAGE
BY MAJOR DIVISION, COLLEGE/DIVISION & BUILDING
AS OF JUNE 30, 2005**

	Building									
	407-409 S. Craig	4902 Forbes Ave	Alumni House	Baker/ Porter	Bramer	College of Fine Arts	Cyert	Doherty	FMS Bldg	Gesling Field
President	0	0	0	109	0	0	0	0	0	0
VP General Counsel	0	542	0	0	0	0	290	0	0	0
Provost										
CIT	0	0	0	42,614	0	0	1,456	52,114	0	0
CFA	0	5,853	0	5,233	0	83,340	0	27,891	0	0
Heinz	0	0	0	0	0	0	0	0	0	0
H&SS	0	4,789	0	94,079	0	0	0	0	0	0
MCS	0	0	0	0	0	0	0	72,037	1,323	0
SCS	10,532	0	0	0	0	0	96	3,018	0	0
Tepper	0	0	0	0	0	0	0	0	0	0
SEI	0	0	0	0	0	0	0	0	0	0
Other Provost	225	3,463	294	4,712	2,580	2,342	40,244	548	29,258	3,920
Total	10,757	14,105	294	146,638	2,580	85,682	41,796	155,608	30,581	3,920
VP Finance	0	741	0	0	0	0	275	0	0	0
VP Enrollment										
Enrollment Services Admin	0	2,349	0	24,564	0	2,847	92	11,688	0	0
Housing	0	0	0	0	0	0	0	0	0	0
Athletics	0	0	0	0	0	0	0	0	0	1,984
Other VP Enrollment	225	6,155	0	107	0	990	508	0	125	3,920
Total	225	8,504	0	24,671	0	3,837	600	11,688	125	5,904
VP Univ Advancement	0	1,117	6,207	0	1,116	0	0	0	0	0
Total University	10,982	25,009	6,501	171,418	3,696	89,519	42,961	167,296	30,706	9,824
University Controlled	0	3,986	0	0	0	0	0	266	0	1,147
Total Net Assignable Space	10,982	28,995	6,501	171,418	3,696	89,519	42,961	167,562	30,706	10,971
Building Support	679	7,673	1,736	79,302	801	35,912	21,661	81,350	13,006	2,737
TOTAL	11,661	36,668	8,237	250,720	4,497	125,431	64,623	248,912	43,712	13,708

**TOTAL SPACE IN SQUARE FOOTAGE
BY MAJOR DIVISION, COLLEGE/DIVISION & BUILDING (Cont.)
AS OF JUNE 30, 2005**

	Building								
	GSIA	Gym	Hamburg	Hamer- schlag	Hunt Library	M. Morrison	Mellon Institute	Newell- Simon	Penn Ave
President	0	0	0	0	0	0	0	0	0
VP General Counsel	0	0	0	0	0	0	0	0	80
Provost									
CIT	0	0	21,700	72,283	0	0	39	0	0
CFA	0	0	0	0	0	66,228	0	0	0
Heinz	0	0	44,917	0	0	0	0	0	0
H&SS	0	0	0	0	0	9,828	12,505	0	0
MCS	0	0	0	831	0	0	168,937	0	0
SCS	0	0	0	2,274	0	0	0	94,479	0
Tepper	77,416	0	0	0	0	0	0	0	0
SEI	0	0	0	0	0	0	0	0	0
Other Provost	389	59	1,025	335	82,771	973	18,823	50	31,750
Total	77,805	59	67,642	75,723	82,771	77,029	200,304	94,529	31,750
VP Finance	963	0	0	0	0	0	3,363	0	55,998
VP Enrollment									
Enrollment Services Admin	0	0	4,945	1,783	0	2,927	1,575	0	0
Housing	0	0	0	0	0	0	0	0	0
Athletics	0	55,488	0	0	0	0	0	0	0
Other VP Enrollment	227	79	379	603	0	1,356	784	1,301	365
Total	227	55,567	5,324	2,386	0	4,283	2,359	1,301	365
VP Univ Advancement	0	0	0	0	903	0	0	0	0
Total University	78,995	55,626	72,966	78,109	83,674	81,312	206,026	95,830	88,193
University Controlled	0	0	0	235	0	193	1,978	0	6,703
Total Net Assignable Space	78,995	55,626	72,966	78,344	83,674	81,505	208,004	95,830	94,896
Building Support	53,043	7,936	34,068	49,396	15,336	35,994	144,777	58,152	4,425
TOTAL	132,038	63,561	107,035	127,739	99,010	117,500	352,782	153,982	99,321

**TOTAL SPACE IN SQUARE FOOTAGE
BY MAJOR DIVISION, COLLEGE/DIVISION & BUILDING (Cont.)
AS OF JUNE 30, 2005**

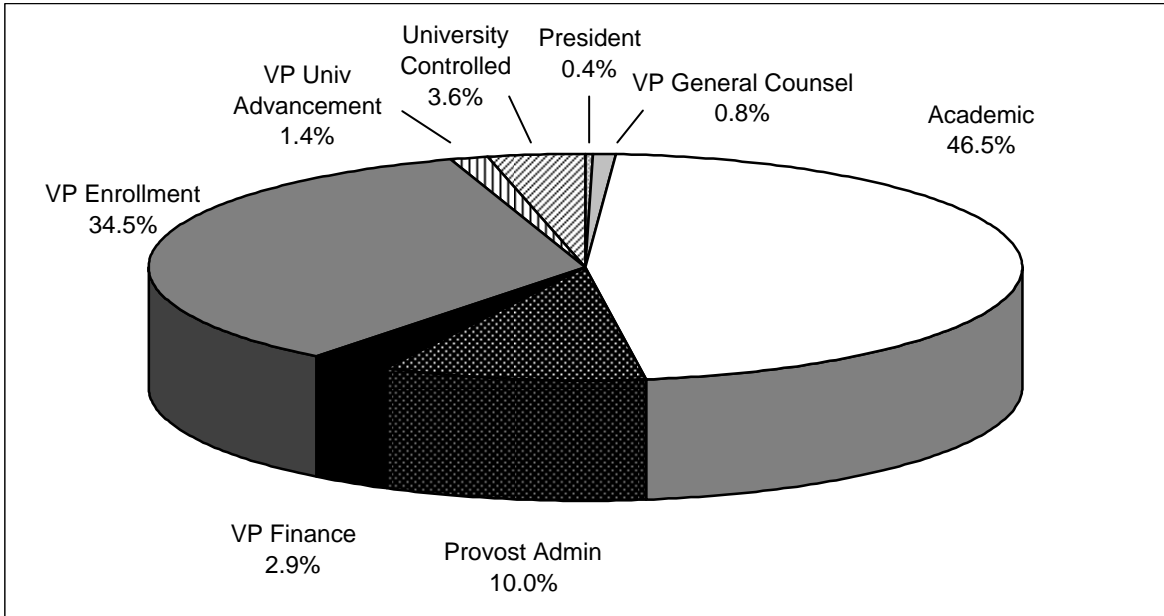
	Building								
	Pgh. Tech. Center	Planetary Robotics	Posner Center	Publica- tions & Printing	Purnell	Roberts Eng.	Scaife	Smith	Univ. Center
President	0	0	7,509	0	0	0	0	0	0
VP General Counsel	0	0	0	0	0	0	0	0	0
Provost									
CIT	17,415	0	0	0	0	35,844	20,982	2,452	0
CFA	0	0	0	0	62,727	0	0	0	0
Heinz	0	0	0	0	0	0	0	149	0
H&SS	0	0	0	0	0	0	0	0	0
MCS	787	200	0	0	0	0	0	0	0
SCS	0	6,310	0	0	0	0	0	12,541	0
Tepper	0	0	0	0	0	0	0	0	0
SEI	0	0	0	0	0	0	0	0	0
Other Provost	29,824	0	944	0	696	194	83	15	555
Total	48,026	6,510	944	0	63,423	36,038	21,065	15,157	555
VP Finance	0	0	0	6,466	0	0	0	0	14,093
VP Enrollment									
Enrollment Services Admin	0	0	0	0	0	0	5,413	0	0
Housing	0	0	0	0	0	0	0	0	0
Athletics	0	0	0	0	0	0	0	0	45,843
Other VP Enrollment	209	0	0	10	154	0	20	0	74,009
Total	209	0	0	10	154	0	5,433	0	119,852
VP Univ Advancement	0	0	0	2,788	0	0	0	0	0
Total University	48,235	6,510	8,453	9,264	63,577	36,038	26,498	15,157	134,500
University Controlled	1,750	0	0	0	0	2,014	0	0	6,184
Total Net Assignable Space	49,985	6,510	8,453	9,264	63,577	38,052	26,498	15,157	140,684
Building Support	31,671	348	1,407	1,054	41,708	28,650	10,030	6,048	69,424
TOTAL	81,656	6,858	9,860	10,318	105,283	66,702	36,528	21,204	210,107

**TOTAL SPACE IN SQUARE FOOTAGE
BY MAJOR DIVISION, COLLEGE/DIVISION & BUILDING (Cont.)
AS OF JUNE 30, 2005**

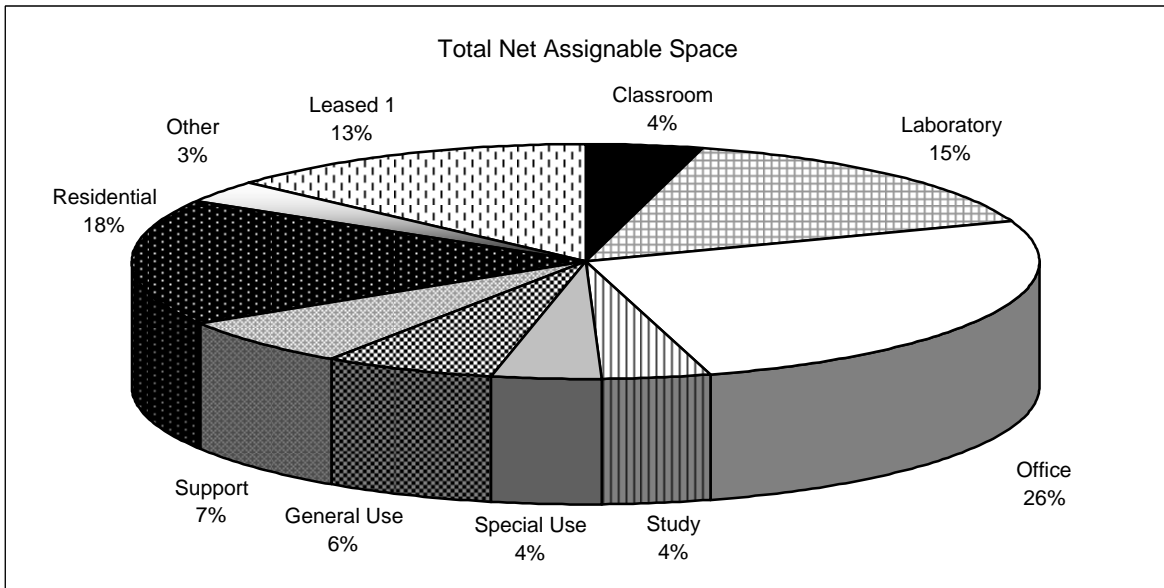
	Building									
	UTDC	Warner	Wean	Whit- field	Housing Bldgs	Other	NREC Leased	SEI Leased	Other Leased	University Total
President	1,089	3,631	0	0	0	0	0	0	0	12,338
VP General Counsel	1,148	988	0	8,232	14,991	0	0	0	0	26,272
Provost										
CIT	0	0	28,461	0	0	14,336	0	0	1,467	311,164
CFA	0	0	197	0	0	0	0	0	26,583	278,051
Heinz	471	0	0	0	0	0	0	0	1,650	47,188
H&SS	0	0	0	0	0	0	0	0	1,917	123,118
MCS	0	0	48,970	0	0	0	0	0	12,000	305,084
SCS	0	0	80,081	0	0	0	75,272	0	0	284,602
Tepper	0	0	0	0	0	0	0	0	7,770	85,186
SEI	0	0	0	0	0	43,765	0	126,327	9,541	179,633
Other Provost	901	6,335	22,715	68	5,332	33,130	0	0	20,937	345,490
Total	1,372	6,335	180,424	68	5,332	91,231	75,272	126,327	81,865	1,959,516
VP Finance	16,549	641	205	0	1,391	554	0	0	0	101,238
VP Enrollment										
Enrollment Services Admin	0	6,751	4,859	0	0	0	0	0	0	69,794
Housing	0	0	0	0	475,591	46,990	0	0	222,332	744,913
Athletics	0	0	0	0	12,979	0	0	0	1,875	118,169
Other VP Enrollment	948	12,291	555	10	138,424	9,358	0	0	9,560	262,671
Total	948	19,042	5,414	10	626,994	56,348	0	0	233,767	1,195,547
VP Univ Advancement	0	4,649	0	0	0	0	0	0	32,299	49,078
Total University	21,106	35,286	186,043	8,310	648,708	148,133	75,272	126,327	347,931	3,343,989
University Controlled	5,895	0	0	0	0	82,377	0	202	10,953	123,883
Total Net Assignable Space	27,001	35,286	186,043	8,310	648,708	230,510	75,272	126,529	358,884	3,467,872
Building Support	7,567	10,631	111,391	3,722	169,327	14,853	13,210	37,949	4,311	1,211,286
TOTAL	34,569	45,917	297,435	12,032	818,035	245,363	88,482	164,478	363,194	4,679,157

**NET ASSIGNABLE SPACE BY MAJOR USE & DIVISION
AS OF JUNE 30, 2005**

Net Assignable Space by Major Division



Net Assignable Space by Major Use



1. The National Robotics Engineering Consortium (NREC) and the Software Engineering Institute (SEI) Building are not included in the "leased" use category. These buildings are counted among Carnegie Mellon buildings within the appropriate use category.

PARKING CAPACITY
FISCAL YEARS 2005 to 2006

	<u>FY 2005</u> <u>Spaces</u>	<u>FY 2006</u> <u>Spaces</u>
Permit Parking	2,418	2,661
Visitor Parking	242	272
Meter Parking	46	46
Utility Parking	28	28
Campus Street	301	301
Carnegie Mellon Area Total	3,035	3,308
Total Permits Issued	2,610	2,824

HOUSING CAPACITY
BY BEDS AVAILABLE & BEDS FILLED
FALL SEMESTER 2005

	<u>Beds</u> <u>Available</u>	<u>Beds Filled</u>
Boss Hall	71	70
Cathedral Mansions	149	146
Doherty Apartments	155	155
Donner Hall	246	243
Fairfax Apartments	154	152
Forbes House	33	33
Fraternities/Sororities	372	348
Global Studies	31	30
Hammerschlag House	166	162
Henderson Hall	60	60
James Manor ¹	6	6
London Terrace Apartments	31	28
Margaret Morrison Apartments	80	76
Margaret Morrison Sorority Houses	28	28
McGill Hall	72	72
Morewood Gardens	658	652
Mudge House	308	306
Neville Apartments	22	22
New House	256	254
Resnik House	150	147
Roselawn Terrace	60	59
Saxony Apartments ²	1	1
Scobell Hall	86	86
Shady Oak Apartments	82	77
Shirley Apartments	41	40
Spirit House	8	8
Tech House	6	5
Veronica Apartments	35	34
Webster Hall	199	198
Welch Hall	56	55
West Wing	145	144
Woodlawn Apartments	36	36
Wyndham Hotel ²	12	12
Total	3,815	3,745

1. Undergrad students living in graduate housing.

2. These assignments are due to hosting Tulane students and a larger incoming class.

Key to Buildings and Services

Carnegie Mellon® Campus Map 2006

Facilities Management Services

ACADEMIC BUILDINGS

Location	#	Name
B-6	16.	Alumni House
E-5	3.	Baker/Porter Hall
A-7	27.	Bramer House
D-4	172.	Collaborative Innovation Center
E-7	7.	College of Fine Arts
C-6	13.	Cyert Hall
D-6	4.	Doherty Hall
D-4	40.	Facilities Management Services Building
E-7	9.	Graduate School of Industrial Administration (GSIA)
E-8	10.	Gymnasium
C-5	17.	Hamburg Hall
E-4	2.	Hamerschlag Hall
E-6	8.	Hunt Library
D-7	11.	Margaret Morrison Carnegie Hall
C-2	14.	Mellon Institute
D-5	28.	Newell-Simon Hall
*	41.	Pittsburgh Technology Center
D-5	21.	Planetary Robotics Building
E-7	36.	Posner Center
B-5	22.	Publications and Printing Building
C-6	34.	Purnell Center for the Arts
E-4	33.	Roberts Engineering Hall
*	26.	Robotics Engineering Consortium
E-4	1.	Scaife Hall
C-5	18.	Smith Hall
B-2	24.	Software Engineering Institute
C-7	80.	University Center
C-6	5.	Warner Hall
D-5	12.	Wean Hall
D-5	35.	West Garages
A-2	29.	Whitfield Hall
C-3	140.	300 South Craig Street
C-3	25.	407 South Craig Street
C-3	37.	4516 Henry Street
B-3	225.	4616 Henry Street
C-4	38.	4615 Forbes Ave.
C-5	30.	4902 Forbes Ave.
*	32.	6555 Penn Avenue

Note:
Building Numbers
21,22,30,35
are slated for
demolition in
Spring 2006.

PARKING AREAS

Location	#	Name	Location	#	Name
A-7	P1.	Fine Arts	B-7	P13.	Alumni House
D-8	P2.	Sororities	A-2	P14.	Whitfield Hall
D-7	P3.	Children's School	D-5	P15.	Hamburg Hall
B-8	P4.	Doherty	D-5	P16.	West Campus
C-8	P5.	East Campus Garage	C-5	P17.	Purnell Center
*	P6.	6555 Penn Avenue	C-5	P18.	4902 Forbes
B-6	P7.	Fraternities	*	P19.	Pittsburgh Technology Center
B-5	P8.	Morewood	D-4	P20.	Junction Hollow
C-6	P9.	Warner	A-7	P23.	Bramer House
C-2	P10.	Dithridge Street Garage	E-5-7	P24.	Frew St. Disabled Parking
E-4	P11.	Porter-Hamerschlag-Wean	VP.		Visitor Parking
*		Off Campus, See City Area Map.	♿		Accessible Parking

Colleges

Carnegie Institute of Technology (CIT) – Scaife Hall
 Mellon College of Science (MCS) – Mellon Institute and Doherty Hall
 College of Humanities and Social Sciences (H&SS) – Baker Hall
 College of Fine Arts (CFA)
 Tepper School of Business (Tepper) – GSIA
 The H. John Heinz School of Public Policy and Management – Hamburg Hall
 School of Computer Science (SCS) – Wean Hall

Services

Office of Admission – Warner Hall
 Housing Office – Morewood Gardens
 Security – 4902 Forbes Ave.

Information is available in the University Center and The Office of Student Affairs, Warner Hall.

RESIDENCE BUILDINGS

Location	#	Name
D-9	58.	Boss Hall
A-4	213.	Cathedral Mansions
B-8	61.	Doherty Apartments
D-8	62.	Donner Hall
B-3	209.	Fairfax Apartments
B-6	83.	Fraternity Quadrangle
D-9	54.	Hamerschlag House
E-9	55.	Henderson Hall
D-9	68.	Margaret Morrison Apartments
D-9	70.	Margaret Morrison Sorority Houses
D-9	53.	McGill Hall
B-6	51.	Morewood Gardens
A-5	50.	Mudge House
A-6	96.	New House
D-8	81.	Resnik House
D-9	64.	Roselawn Terrace
D-8	57.	Scobell Hall
A-3	57.	Shady Oaks Apartments
B-1	79.	Shirley Apartments
D-9	59.	Spirit House
D-9	67.	Tech House
A-4	210.	Veronica Apartments
B-2	212.	Webster Hall
E-9	56.	Welch Hall
D-8	82.	West Wing
C-9	63.	Woodlawn Apartments
D-9	200.	99 Gladstone Road
B-7	201.	1094 Devon Road

* Off Campus, See City Area Map.

City Area Map Off-Campus Buildings.

