

Carnegie Mellon Facts 1997

Volume11

Alexander Macpherson, Planning Analyst
University Planning Services
Carnegie Mellon University
February 1997

INTRODUCTION

CARNEGIE MELLON UNIVERSITY

THE UNIVERSITY

Carnegie Mellon has emerged as one of the nation's top private research universities. The university's interdisciplinary approach provides graduates with professional and technical skills and a strong science and liberal arts background. According to Edward B. Fiske, former education columnist for the New York Times, Carnegie Mellon's "faculty and administration have done the most original thinking of any American university in pursuing the twin goals of liberal-professional education."

Carnegie Mellon began in 1900 when industrialist Andrew Carnegie founded Carnegie Technical Schools in Pittsburgh's Oakland section. Twelve years later these schools became a degree-granting college---the Carnegie Institute of Technology. In 1967, Carnegie Tech merged with the Mellon Institute of Research to form Carnegie Mellon University.

Carnegie Mellon's internationally recognized programs encompass the areas of engineering, technology, science, liberal arts, fine arts and public and private management. The university includes seven colleges.

The Carnegie Institute of Technology (CIT) is one of the foremost engineering schools in the United States. Because of its emphasis on interdisciplinary research and partnerships with industry, the college produces graduates who are able to transfer their fundamental engineering knowledge into industrial practice. Faculty bring their knowledge of real-world industrial problems into the classrooms and laboratories. The college includes six departments: Chemical Engineering, Civil and Environmental Engineering, Electrical and Computer Engineering, Engineering and Public Policy, Mechanical Engineering and Materials Science and Engineering, plus a program in Biomedical Engineering.

The College of Fine Arts (CFA), the first school in the nation to award a degree in drama, includes the departments of Architecture, Art, Design, Drama and Music.

The College of Humanities and Social Sciences (H&SS) is recognized for its broad view of the liberal-professional arts and its commitment to excellence in teaching. H&SS provides an arena for studying the social behavior of individuals, social institutions, and cultures from a variety of perspectives. Its departments include Economics, English, History, Modern Languages, Philosophy, Psychology, Social and Decision Sciences and Statistics.

The Mellon College of Science (MCS) is highly interdisciplinary with the departments of Division of Molecular Sciences showcasing research and teaching efforts in the Biological Sciences and Mathematics and Physics and the and Chemistry. MCS researchers are taking the lead in new programs and research centers dealing with computational biology, biomedical research, nuclear magnetic resonance, molecular science, light microscopy, nonlinear analysis and astrophysics, among many other areas.

The Graduate School of Industrial Administration (GSIA) offers a Master of Science in Industrial Administration, a degree roughly equivalent to an M.B.A., but with a firmer scientific component based on the use of quantitative methods as management tools. GSIA also offers doctoral and executive education programs and now administers undergraduate programs in economics and industrial management.

The School of Computer Science (SCS) operates at the forefront of research in computing, artificial intelligence, machine translation and robotics. The school grants doctor's degrees in computer science and robotics, a master's degree in software engineering and an undergraduate degree in computer science.

CARNEGIE MELLON UNIVERSITY

The H. John Heinz III School of Public Policy and Management offers master's degrees in public policy and management, health care policy and management, public management, arts management, management information systems and sustainable economic development. It also offers a Ph.D. degree in public policy analysis and a range of executive and midcareer short course and certification programs. Through its master's programs, the Heinz School trains students to serve in the public interest within the public, not-for-profit, interface and private sectors.

CARNEGIE MELLON UNIVERSITY

VISION

Carnegie Mellon will lead educational institutions by building on its traditions of innovation and transcending disciplinary boundaries to meet the changing needs of society.

MISSION STATEMENT

To create and disseminate knowledge and art through research and artistic expression, teaching and learning, and transfer to society.

To serve our students by teaching them leadership and problem-solving skills, and our values of quality, ethical behavior, responsibility to society and commitment to our work.

To pursue the advantages provided by a diverse community, open to the exchange of ideas, where discovery and artistic creativity can flourish.

OUR VALUES AND TRADITIONS

Leadership We lead through innovation and excellence; we establish new directions by talent and example, influencing the behavior of other institutions.

Innovation We identify challenges and opportunities presented by evolving human needs, new research methods and technologies, and promptly assemble the talent and resources needed to exploit them. Our innovative capability is one of the foundations upon which our leadership capacity is built.

Transcending Disciplinary Boundaries We function seamlessly and transcend traditional disciplinary boundaries to our comparative advantage.

Responsibility to Society We serve society through transfer of technology, continuing education programs, public service and enrichment of the community through the arts.

Learning We build on our heritage of the Carnegie Plan to become a leading institution that combines first-rate research with outstanding undergraduate education through our focus on learning and problem-solving.

Dedication to our Work Our students, staff and faculty are committed to our heritage emblazoned on our seal: "My Heart Is in the Work."

Commitment to Quality We focus our energies on understanding the needs of the communities we serve while applying principles of self-evaluation, benchmarking and continuous improvement to fulfill these needs.

CARNEGIE MELLON UNIVERSITY

DEGREE PROGRAMS BY COLLEGE AND DEPARTMENT
FALL SEMESTER 1996

CARNEGIE INSTITUTE OF TECHNOLOGY				
Biomedical Engineering			Electrical and Computer Engineering	
Engineering (Bioengineering Option)	B.S.		Computer E.	B.S.
Bioengineering with CIT Department	M.S., Ph.D.		Electrical E.	B.S.
Bioengineering	M.S., Ph.D.		Electrical and Computer E.	M.S., Ph.D.
Chemical Engineering			Mechanical Engineering	
Chemical E.	B.S., M.S., Ph.D.		Mechanical E.	B.S., M.E., M.S., Ph.D.
Colloids, Polymers, & Surfaces (Interdisciplinary w/ MCS)	M.S.		Materials Science and Engineering MSE	
Civil and Environmental Engineering				B.S., M.E., M.S., Ph.D.
Civil E.	B.S., M.S., Ph.D.			
Engineering and Public Policy				
Engineering Major & EPP	B.S., M.S.			
EPP	M.S., Ph.D.			
COLLEGE OF HUMANITIES AND SOCIAL SCIENCES				
Humanities and Arts (jointly w/CFA)		B.H.A.	Philosophy	
Economics			Philosophy	B.A.
Economics	B.A., B.S.		Logic & Computation	B.S., M.S.
Managerial Economics	B.S.		Computational Linguistics	B.S., M.S., Ph.D.
English			Pure & Applied Logic (w/ Computer Science & Mathematics)	Ph.D.
English	B.A.		Psychology	
Creative Writing	B.A.		Psychology	B.A., B.S., Ph.D.
Professional Writing	B.A., M.A.		Cognitive Science	B.S.
Technical Writing	B.S.		Social and Decision Sciences	
English	M.A.		Social & Decision Sciences	B.S., Ph.D.
Literary & Cultural Theory	Ph.D.		Information & Decision Systems	B.S.
History			Policy & Management	B.S.
Social History	B.A., B.S., M.A., Ph.D.		Political Science	B.S.
History and Policy	B.A., B.S., M.S., Ph.D.		Social & Decision Sciences	Ph.D.
Anthropology and History	B.A., B.S.		Statistics	
European Studies (Double Major)	B.A.		Statistics	B.S., M.S., Ph.D.
Modern Languages			Student Defined	B.A., B.S.
European Studies	B.A.			
French	B.A.			
Japanese	B.A.			
German	B.A.			
Russian Studies	B.A.			
Spanish	B.A.			
COLLEGE OF FINE ARTS				
Arts and Sciences (jointly w/MCS)		B.A.S.	Drama	
Humanities and Arts (jointly w/H&SS)	B.H.A.		Drama	B.F.A.
Master of Arts Management (w/Heinz)	M.A.M.		Costume Design	M.F.A.
Architecture			Directing	M.F.A.
Architecture	B.Arch., M.S., Ph.D.		Lighting Design	M.F.A.
Art			Playwriting	M.F.A.
Art	B.F.A., M.F.A.		Production	M.F.A.
Design			Scene Design	M.F.A.
Graphic Design	B.F.A.		Acting	M.F.A.
Industrial Design	B.F.A.		Music	
Communication Design	B.F.A.		Music (Composition)	B.F.A., M.M.
Communication Planning & Design w/English	M.A.		Music Performance	B.F.A., M.M.
Interaction Design	M.Des		Music Conducting	M.M.

CARNEGIE MELLON UNIVERSITY

DEGREE PROGRAMS BY COLLEGE AND DEPARTMENT
FALL SEMESTER 1996

MELLON COLLEGE OF SCIENCE			
Arts and Sciences (jointly w/CFA)	B.A.S.	Mathematics	Mathematics Applied Mathematics (Operations Research) B.S., M.S., D.A., Ph.D. B.S.
Biological Sciences			
Biological Sciences	B.S., Ph.D.		Applied Mathematics (Statistics) B.S.
Biological Sciences/Comp. Sci. Track	B.S.		Applied Mathematics M.S.
Biological Sciences & Humanities or Social Science	B.A.		Science & Computational Finance (w/GSIA, SCS & Statistics) M.S.
Biological Sciences/Biochemistry (w/Chemistry & Physics)	Ph.D.		Algorithms, Combinatorics & Optimization (w/Comp. Sci. & GSIA) Ph.D.
Biological Sciences/Biophysics (w/Chemistry & Physics)	Ph.D.		Mathematical Finance (w/GSIA) Ph.D.
Biological Sciences/Biochemistry & Biophysics (w/ Chemistry & Physics)	Ph.D.		Pure & Applied Logic (w/ Computer Science & Philosophy) Ph.D.
Chemistry		Physics	
Chemistry	B.A., B.S., M.S., Ph.D.	Physics	B.A., B.S., M.S., Ph.D.
Chemistry/Computer Science Track	B.S.	Physics/Computer Science Track	B.S.
Polymer Science	M.S.	Applied Physics	Ph.D.
Colloids, Polymers, & Surfaces (w/ Chemical E.)	M.S.	Physics/Biochemistry	Ph.D.
Chemistry/Biochemistry (w/Biology & Physics)	Ph.D.	(w/Biology & Chemistry)	
Chemistry/Biophysics (w/Biology & Physics)	Ph.D.	Physics/Biophysics	Ph.D.
Chemistry/Biochemistry & Biophysics (w/Biology & Physics)	Ph.D.	(w/Biology & Chemistry)	
		Physics/Biochemistry & Biophysics (w/Biology & Chemistry)	Ph.D.
GRADUATE SCHOOL OF INDUSTRIAL ADMINISTRATION			
Industrial Management	B.S.	Economics	Ph.D.
Industrial Administration	M.S.I.A., Ph.D.	Financial Economics	Ph.D.
Industrial Administration, minor in Public Management & Policy (w/ Heinz)	M.S.	Information Systems	Ph.D.
Civil Engineering & Management (w/CIT)	M.S.	Management of Manufacturing & Automation (w/ Robotics Institute)	Ph.D.
Computational Finance (w/HSS, MCS and SCS)	M.S.	Manufacturing and Operations Systems	Ph.D.
Software Engineering and Business Mgt (w/SCS)	M.S.	Marketing	Ph.D.
Accounting	Ph.D.	Operations Research	Ph.D.
Algorithms, Combinatorics & Optimization (w/ Computer Science & Mathematics)	Ph.D.	Organizational Behavior and Theory	Ph.D.
		Politics and Political Economy	Ph.D.
H. JOHN HEINZ SCHOOL OF PUBLIC POLICY AND MANAGEMENT			
Public Management & Policy	M.S.	Master of Philosophy	M.Phil.
Public Management & Policy, minor in Business Administration (w/ GSIA)	M.S.	Master of Public Management	M.P.M.
Health Care Policy and Management	M.S.	Public Policy Analysis	Ph.D.
Information Systems in Public Policy and Management	M.I.S.	Social Science & Public Policy Analysis (w/ S & D S.)	Ph.D.
Master of Arts Management (w/ CFA)	M.A.M.	Sustainable Development (w/ Arch.)	M.S.D.
SCHOOL OF COMPUTER SCIENCE		CARNEGIE MELLON UNIVERSITY Information Networking Institute	
Mathematics/Computer Science (w/Mathematics)	B.S.	Information Networking	M.S.
Software Engineering	M.S.	(jointly w/GSIA, CIT and SCS)	
Algorithms, Combinatorics & Optimization (w/GSIA & Mathematics)	Ph.D.		
Computer Science	Ph.D.		
Robotics	Ph.D.		
Pure & Applied Logic (w/ Philosophy & Mathematics)	Ph.D.		

CARNEGIE MELLON UNIVERSITY

RESEARCH CENTERS, INSTITUTIONS, AND GROUPS
BY ACADEMIC AND RESEARCH UNITS
FALL SEMESTER 1996

ACADEMIC UNITS

CARNEGIE INSTITUTE OF TECHNOLOGY

Engineering Design Research Center (EDRC)
Data Storage Systems Center (DSSC)
Environmental Institute (EI)
Center for Electronic Design Automation (CEDA)
SRC-CMU Research Center for Computer Aided Design (CAD Center)
Pennsylvania SEMATECH Center of Excellence for Rapid Yield Learning (SCOE)
Center for Excellence in Optical Data Processing (CEODP)
Laboratory for Networked and Mobile Computing Research
Virtual Lab
Program on International Peace and Security (IPS)
Center for Energy and Environmental Studies (CEES)
The Center for Integrated Study of the Human Dimensions of Global Change (CISHDGC)
Center for Iron and Steelmaking Research (CISR)
Consortium for Advanced Deformation Processing Research (CADPR)
The GUIDe Consortium on the Forced Response of Bladed Disks
Center for Entrepreneurial Development (CED)

COLLEGE OF FINE ARTS

Studio for Creative Inquiry (SCI)
Center for Building Performance and Diagnostics (CBPD)
Advanced Building Systems Integration Consortium (ABSIC)
Intelligent Workplace
Carnegie Mellon / Building Industry Computer-Aided Design Consortium (CBCC)
Institute for Gounod Studies (IGS)

GRADUATE SCHOOL OF INDUSTRIAL ADMINISTRATION

Carnegie Bosch Institute for Applied Studies in International Management (CBIASIM)
The Donald H. Jones Center for Entrepreneurship (DHJCE)
The Center for Financial Analysis and Securities Trading (FAST)
Center for the Management of Technology (CMT)
Center for Risk Perception and Communication (CRPC)
Center for the Study of Public Policy (CPP)
The Green Design Initiative (GDI)

HEINZ SCHOOL OF PUBLIC POLICY AND MANAGEMENT

National Consortium on Violence Research (NCOVR)
Center for Economic Development (CED)
National Census Data Research Center (NCDRC)
Decision Systems Research Institute (DSRI)
Urban Systems Institute (USI)

HUMANITIES AND SOCIAL SCIENCES

Center for Cultural Analysis (CCA)
Center for the Study of Writing and Literacy (CSWL)
Center for History and Policy (CHP)
Pittsburgh Center for Social History (PCSH)
Center for Business, Technology and the Environment (CBTE)
Center for African American Urban Studies and the Economy
Center for Historical Information Systems and Analysis (CHISA)
Language Learning Research Center (LLRC)
Center for Computations in Methodology and Logic
Center for the Advancement of Applied Ethics (CAAE)
Center for the Neural Basis of Cognition (CNBC)

CARNEGIE MELLON UNIVERSITY

RESEARCH CENTERS, INSTITUTIONS, AND GROUPS
BY ACADEMIC AND RESEARCH UNITS
FALL SEMESTER 1996

MELLON COLLEGE OF SCIENCE

Pittsburgh Supercomputing Center (PSC)
Center for Nonlinear Analysis (CNA)
Pittsburgh NMR Center for Biomedical Research (NMRCBR)
NSF Science and Technology Center for Light Microscope Imaging and Biotechnology (CLMIB)
W.M. Keck Center for Advanced Training in Computational Biology

SCHOOL OF COMPUTER SCIENCE

Robotics Institute (RI)
Center for Integrated Manufacturing Decision Systems (CIMDS)
Field Robotics Center (FRC)
Center for Medical Robots and Computer-Assisted Surgery (MRCAS)
Vision and Autonomous Systems Center (VASC)
Robotics Engineering Consortium (REC)
Language Technology Institute (LTI)
Center for Machine Translation (CMT)
Human-Computer Interaction Institute (HCII)
Information Technology Center (ITC)
Interactive Multimedia Institute (IMI)- in progress

RESEARCH UNITS

OFFICE OF THE PROVOST

Center for Innovation in Learning (CIL)
Center for University Outreach (CUO)
Carnegie Mellon Research Institute (CMRI)
 Advanced Devices and Materials Group (ADM)
 Materials Technology Center (MTC)
 Computer, Automation and Robotics Group
 Computer Engineering Center (CEC)
 Industry Systems Group (IS)
 Rail Systems Center (RSC)
 High Speed Ground Transportation Center (HSGTC)
 Biotechnology Group
 Center for Environmental Microbiology (CEM)
 Biotechnology Center
 Special Programs Group
 Center for Materials Production (CMP)
 ASTM Engine test Monitoring Center (ASTCM)
 Research Center on the Materials of the Artist and Conservator (CMA&C)
 Computer, Automation & Robotics Group (CAR))
Energy Management Program (EMP)
Information Networking Institute (INI)
The CMU-ITESM Institute for Strategic Development (ITESM)
Hunt Institute for Botanical Documentation (HUNT)

SOFTWARE ENGINEERING INSTITUTE (SEI)

CARNEGIE MELLON UNIVERSITY

ENDOWED AND NAMED PROFESSORS BY COLLEGE
 SPRING SEMESTER 1997

COLLEGE OF FINE ARTS

Andrew W. Mellon Professorship of Fine Arts
 Bessie F. Anathan Professorship of Fine Arts
 Dorothy L. Stubnitz Professorship of Art
 Nierenberg Visiting Professorship of Design
 Philip Chosky Visiting Professorship of Drama
 T. David Fitzgibbon Visiting Professorship of Architecture
 University Professorship of Composition

Appointee
 To Be Named
 Barbara J. Anderson
 Herbert T. Olds
 Named Each Year
 Named Each Year
 Gerhard Wiemken
 Leonardo Balada

CARNEGIE INSTITUTE OF TECHNOLOGY

ALCOA Professorship
 Alumni Professorship of Environmental Science and Engineering
 Bayer Professorship of Chemical Engineering
 Buhl Professorship of Electrical and Computer Engineering and Computer Science
 Duquesne Light Company Professorship of Engineering
 George Tallman Ladd and Florence Barrett Ladd Research Professorship
 George Westinghouse Professorship of Engineering
 Gulf Oil Foundation University Professorship of Engineering
 John E. Swearingen University Professorship of Chemical Engineering
 Joseph F. and Nancy Keithley University Professorship of Electrical and Computer Engineering
 Posco Professorship of Iron & Steelmaking
 Rudolph R. and Florence Dean Professorship of Chemical Engineering
 Stephen J. Jatras University Professorship
 Sun Company University Professorship
 Theodore Ahrens Professorship of Engineering
 Thomas Lord Professorship
 Thomas Lord Professorship of Civil and Environmental Engineering
 Thomas Lord Professorship of Engineering and Public Policy and Electrical and Computer Engineering
 U.A. and Helen Whitaker University Professorship of Electrical and Computer Engineering
 U.S. Steel Professorship of Metallurgical Engineering and Materials Science
 University Professorship of Electrical and Computer Engineering
 University Emeritus Professorship of Chemical Engineering
 University Professorship of Applied Science
 Walter J. Blenko, Sr. Professorship of Environmental Engineering
 William J. Brown Professorship of Mechanical Engineering

Tresa Pollock
 Edward S. Rubin
 Larry Biegler
 Daniel P. Siewiorek
 Chris T. Hendrickson
 To Be Named
 David Casasent
 John L. Anderson
 Arthur W. Westenberg
 Aggel Jordan
 Alan Cramb
 Ignacio E. Grossmann
 Mark Kryder
 Steven Fenves
 J. Fletcher Osterle - Emeritus
 To Be Named
 Richard Luthy
 Granger Morgan
 To Be Named
 To Be Named
 Robert White
 Herbert Toor - Emeritus
 William W. Mullins -Emeritus
 Francis C. McMichael
 Norman A. Chigier

GRADUATE SCHOOL OF INDUSTRIAL ADMINISTRATION

Alumni Professorship of Economics and Finance
 BP America Junior Faculty Research Professorship
 Richard M. Cyert and Morris Degroot Professorship in Economics and Statistics
 David M. and Barbara A. Kirr Professorship of Organization
 David T. and Lindsay J. Morgenthaler Professorship of Entrepreneurship
 Ford Foundation Distinguished Professorship
 H.J. Heinz Professorship of Economics
 Harry B and James H. Higgins Professorship of Economics and Finance and University Professorship
 IBM Professorship of Information Systems at GSIA
 Mellon Bank Professorship of Finance
 R.M. and M.S. Cyert University Professorship of Economics and Management
 Richard M. Cyert Professorship of Management and Economics
 Robert M. Trueblood University Professorship of Accounting and Economics
 Thomas Lord Professorship
 Thomas Lord University Professorship
 Allan Meltzer University Professorship of Political Economy
 Xerox Junior Faculty Research Professorship

Sanjay Srivastava
 Lisa Cameron
 Stanley Zin
 Linda Argote
 John R. Thorne
 Gerald C. Meyers
 Bennet T. McCallum
 Lester Lave
 Gerald L. Thompson
 Chester Spatt
 Richard M. Cyert
 Shyam Sunder
 Yuji Ijiri
 Dennis Epple
 Egon Balas
 Allan Meltzer
 Kannan Srinivasan

COLLEGE OF HUMANITIES AND SOCIAL SCIENCES

Alumni University Professorship of Psychology
 D.O. Hebb Professorship of Psychology
 Herbert A. Simon Professorship of Philosophy
 Howard Heinz Professorship of the Humanities and Social Sciences
 Lee and Marge Gregg Professorship of Psychology
 Leonard J. Savage Professorship of Statistics and Social Sciences
 Luce Professorship of Technology and Social Change
 Maurice Falk University Professorship of Statistics and Social Sciences
 Mellon Bank Professorship of History
 R.K. Mellon University Professorship of Computer Science
 Richard S. Caliguiri Professorship of Urban Studies
 Thomas Lord Professorship of Statistics
 Thomas Stockham Baker Professorship of Literature and Rhetoric
 Walter VanDyke Bingham Professorship of Psychology and Computer Science
 Teresa Heinz Professorship of Cognitive Psychology
 William W. Cooper University Professorship

Robyn Dawes
 Marcel A. Just
 Teddy Seidenfeld
 Peter N. Stearns
 Patricia A. Carpenter
 Joseph B. Kadane
 David W. Hounshell
 Stephen E. Fienberg
 Joe Trotter
 Herbert Simon
 Joel A. Tarr
 John Lehoczky
 Richard E. Young
 John R. Anderson
 To Be Named
 Otto A. Davis

CARNEGIE MELLON UNIVERSITY

Anna Loomis McCandless Professorship

To Be Named

CARNEGIE MELLON UNIVERSITY

ENDOWED AND NAMED PROFESSORS BY COLLEGE (CONTINUED)
SPRING SEMESTER 1997

H. JOHN HEINZ III SCHOOL OF PUBLIC MANAGEMENT & POLICY

Deans Career Development Professorship	Linda Babcock
Deans Career Development Professorship	Susan McElroy
Eugene Barone Professorship of Health Systems Management	Martin Gaynor
H.J. Heinz III Dean's Professorship	Mark Kamlet
H.J. Heinz III Professorship of Regional Economic Development	Richard Florida
J. Erik Jonsson Professorship of Urban Systems and Operations Research	Alfred Blumstein

MELLON COLLEGE OF SCIENCE

Alumni Professorship of Biological Sciences	Chien Ho
Alumni Professorship of Mathematics	Morton E. Gurtin
Buhl Professorship of Theoretical Physics	Frederick J. Gilman
Eberly Family Professorship of Biological Science	To Be Named
Otto Stern Professorship of Physics	Robert B. Griffiths
Thomas Lord Professorship of Chemistry	To Be Named
University Professorship of Physics	Lincoln Wolfenstein
University Professorship of Physics and Mathematics	Robert Sekerka

SCHOOL OF COMPUTER SCIENCE

Alan J. Perlis Professorship of Computer Science	Mary Shaw
Allen Newell Professorship of Computer Science	Jaime G. Carbonell
Alumni Research Professorship of Computer Science	Howard D. Wactlar
Edward Fredkin Research Professorship	William L. Whittaker
Finmeccanica Career Development Professorship of Computer Science	Manuela Velosa
FORE Systems Professorship	Edmund Clarke, Jr.
Herbert A. Simon Professorship of Computer Science	To Be Named
Herbert A. Simon University Professorship of Computer Science and Robotics	Raj Reddy
Hillman University Professorship of Computer Science, Philosophy, and Mathematics	Dana S. Scott
President's Professorship of Computer Science	Randy Bryant
U.A. & Helen Whitaker Professorship of Computer Science	Takeo Kanade

CARNEGIE MELLON UNIVERSITY

ENDOWED PROFESSORSHIPS PLEDGED
SPRING SEMESTER 1997

COLLEGE OF FINE ARTS

H.J. Heinz III Professorship of Ecology/Sustainable Development
Starling Foundation and Speyer Family Professorship of Violin Studies
H.J. Heinz III Professorship of Arts Management (CFA/Heinz)

CARNEGIE INSTITUTE OF TECHNOLOGY

H.J. Heinz III Professorship of Technology Enhanced Learning
Howard M. Wilkoff University Professorship of Electrical and Computer Engineering
Lane Professorship
Philip L. Dowd E'63 Professorship
Teddy and Wilton Hawkins Professorship

GRADUATE SCHOOL OF INDUSTRIAL ADMINISTRATION

Friends of Allan Meltzer Professorship
T. Jerome Holleran Professorship of Business Ethics and Social Responsibility

H. JOHN HEINZ III SCHOOL OF PUBLIC MANAGEMENT & POLICY

H.J. Heinz III Professorship of Entrepreneurship
H.J. Heinz III Professorship of Environmental Economics
H.J. Heinz III Professorship of Technology Enhanced Learning

MELLON COLLEGE OF SCIENCE

John C. Warner Professorship of Chemistry
Orion Hoch S'52 Professorship

SCHOOL OF COMPUTER SCIENCE

Alumni Professorship of Computer Science
Nico Haberman Professorship of Computer Science

CARNEGIE MELLON UNIVERSITY

Charles J. Queenan, Jr. University Professorship
Estella Loomis McCandless Professorship
Raymond John Wean Foundation Professorship

CARNEGIE MELLON UNIVERSITY

ACCREDITATIONS BY COLLEGE AND DEPARTMENT
FALL SEMESTER 1996

College/Department	Accreditation Agency
CARNEGIE MELLON UNIVERSITY	Middle States Association of Colleges and Schools MSA
CARNEGIE INSTITUTE OF TECHNOLOGY	Accreditation Board for Engineering Technology ABET
Chemical Engineering Civil Engineering Computer Engineering Electrical Engineering Engineering and Public Policy Mechanical Engineering Materials Science and Engineering	
COLLEGE OF FINE ARTS	
Architecture	National Architectural Accrediting Board NAAB
Art Design	National Association of Schools of Art and Design NASAD
Music	National Association of Schools of Music NASM
GRADUATE SCHOOL OF INDUSTRIAL ADMINISTRATION	American Assembly of Collegiate Schools of Business AACSB
MELLON COLLEGE OF SCIENCE	
Chemistry	American Chemical Society ACS
H. JOHN HEINZ III SCHOOL OF PUBLIC POLICY & MANANGEMENT	National Association of Schools of Public Affairs and Administration NASPAA

CARNEGIE MELLON UNIVERSITY

TOP FIFTEEN COMPETING SCHOOLS, ENTERING FRESHMEN 1992 to 1996
 BASED ON APPLICATION OVERLAP

School	<u>Rank Each Year</u>				
	1996	1995	1994	1993	1992
Cornell	1	1	1	1	1
MIT	2	2	2	3	2
Univ. of Pennsylvania	3	3	3	2	3
Princeton	4	10	6	4	6
Northwestern	5	4	4	6	4
Penn State	6	7	12	16	8
Johns Hopkins	7	8	5	5	5
Harvard	8	13	19	13	16
Boston	9	6	10	11	11
Brown	10	12	16	12	17
Univ. of Michigan	11	13	9	10	15
Case Western	12	9	7	17	10
Columbia	13	N/A	N/A	N/A	N/A
Washington (St. Louis)	14	11	8	9	9
Stanford	15	15	21	21	N/A

BASED ON ADMITTANCE OVERLAP

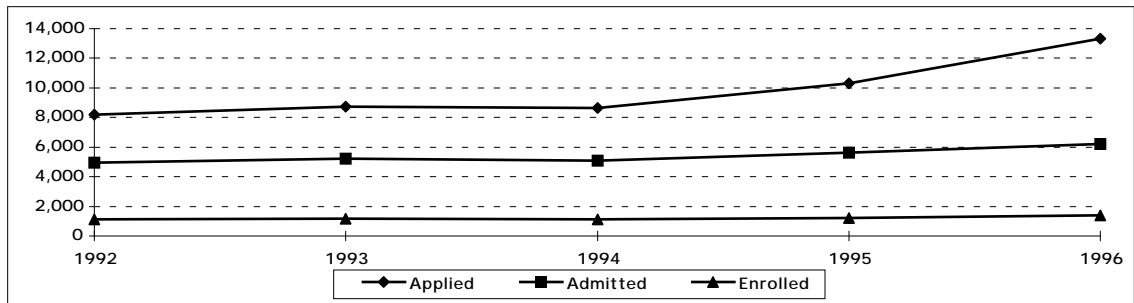
School	<u>Rank Each Year</u>				
	1996	1995	1994	1993	1992
Cornell	1	1	1	1	1
Penn State	2	8	9	7	3
Boston	3	4	4	5	5
Case Western	4	3	2	6	4
U. of Michigan	5	10	10	8	10
RPI	6	2	5	2	2
Washington (St. Louis)	7	5	3	4	6
New York	8	N/A	N/A	N/A	N/A
Rutgers	9	15	15	13	12
John Hopkins	10	9	7	9	11
Northwestern	11	6	6	11	9
MIT	12	7	11	14	14
Univ. of Pennsylvania	13	N/A	N/A	N/A	N/A
Univ. of Virginia	14	N/A	N/A	N/A	N/A
Univ. of Illinois- Chicago	15	13	N/A	N/A	N/A

Overlap refers to the number of applicants or admittees who applied or were admitted to Carnegie Mellon and one of the other schools listed.

STUDENTS

CARNEGIE MELLON UNIVERSITY

FRESHMAN APPLICANT ACTIVITY FALL SEMESTERS 1992 to 1996



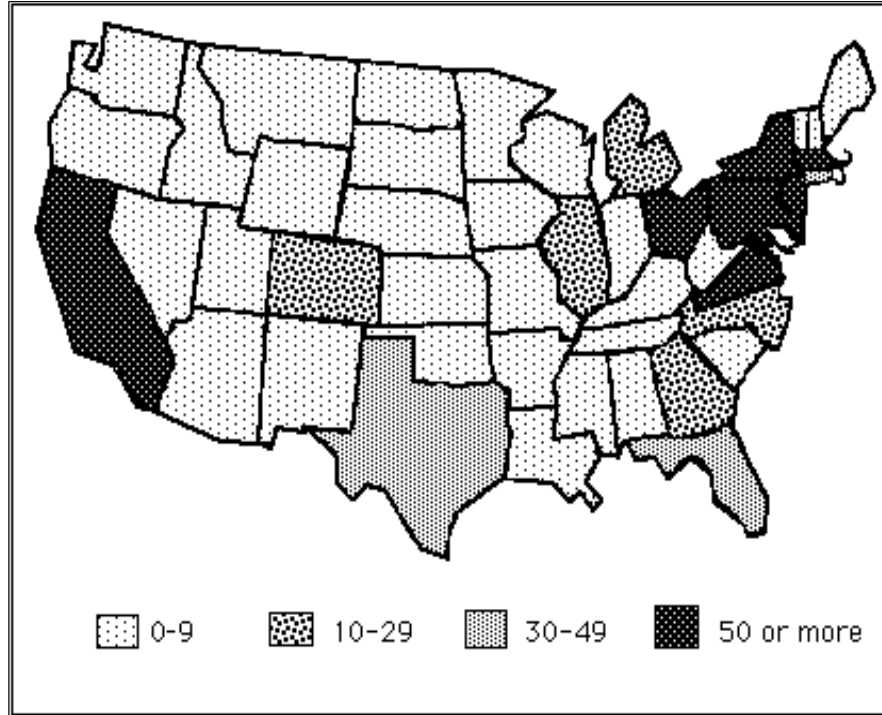
FRESHMAN APPLICANT ACTIVITY
BY COLLEGE
ENTERING FALL SEMESTERS 1992 to 1996

College	Applicant Activity	1992	1993	1994	1995	1996
*BHA	Applied	N/A	N/A	N/A	165	230
	Admitted	N/A	N/A	N/A	42	44
	Admitted %	N/A	N/A	N/A	25%	19%
	Enrolled	N/A	N/A	N/A	9	10
	Yield %	N/A	N/A	N/A	21%	23%
CFA	Applied	1,726	1,799	1,672	1,791	2,044
	Admitted	697	687	669	650	622
	Admitted %	40%	38%	40%	36%	30%
	Enrolled	231	234	215	242	222
	Yield %	33%	34%	32%	37%	36%
CIT	Applied	2,618	2,662	2,475	2,655	3,505
	Admitted	1,618	1,692	1,554	1,652	1,762
	Admitted %	62%	64%	63%	62%	50%
	Enrolled	383	349	347	371	403
	Yield %	24%	21%	22%	22%	23%
H&SS	Applied	1,471	1,623	1,481	1,723	2,068
	Admitted	1,161	1,205	1,208	1,310	1,471
	Admitted %	79%	74%	82%	76%	71%
	Enrolled	233	279	254	271	314
	Yield %	20%	23%	21%	21%	21%
GSIA	Applied	386	387	380	475	806
	Admitted	224	220	260	289	425
	Admitted %	58%	57%	68%	61%	53%
	Enrolled	65	30	58	66	108
	Yield %	29%	14%	22%	23%	25%
MCS	Applied	2,006	2,257	1,521	1,997	2,440
	Admitted	1,267	1,397	982	1,284	1,417
	Admitted %	63%	62%	65%	64%	58%
	Enrolled	233	299	142	181	192
	Yield %	18%	21%	14%	14%	14%
SCS	Applied	N/A	N/A	1,118	1,485	2,221
	Admitted	N/A	N/A	427	381	477
	Admitted %	N/A	N/A	38%	26%	21%
	Enrolled	N/A	N/A	106	97	135
	Yield %	N/A	N/A	25%	25%	28%
CMU	Applied	8,207	8,728	8,647	10,291	13,314
	Admitted	4,967	5,201	5,100	5,608	6,218
	Admitted %	61%	60%	59%	54%	47%
	Enrolled	1,145	1,191	1,122	1,237	1,386
	Yield %	23%	23%	22%	22%	22%

*Bachelor of Humanities & Arts is a joint program between CFA & H&SS.

CARNEGIE MELLON UNIVERSITY

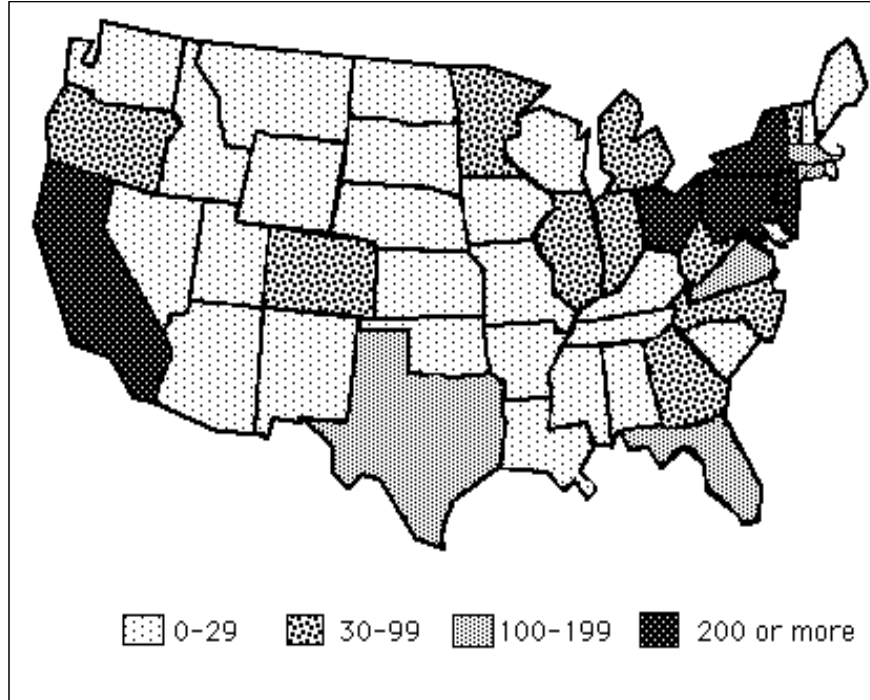
ENROLLED FIRST TIME FRESHMEN BY REGION AND STATE OF PERMANENT RESIDENCE.
FALL SEMESTER 1996



REGION/STATE	REGION/STATE	REGION/STATE	REGION/STATE	REGION/STATE	REGION/STATE
New England	South	Midwest	West		
Connecticut	35	Arkansas	1	Illinois	21
Maine	4	Alabama	6	Indiana	9
Massachusetts	62	Florida	33	Iowa	2
New Hampshire	6	Georgia	18	Kansas	6
Rhode Island	4	Kentucky	5	Michigan	22
Vermont	6	Louisiana	5	Minnesota	9
TOTAL	117	Mississippi	1	Missouri	5
Percent of Total	8%	North Carolina	10	Nebraska	2
		South Carolina	5	North Dakota	1
Middle States		Tennessee	6	South Dakota	0
		Virginia	50	Wisconsin	5
Delaware	6	TOTAL	140	TOTAL	82
District of Col.	7	Percent of Total	10%	Percent of Total	6%
Maryland	76			Percent of Total	8%
New Jersey	141	Southwest			
New York	186			U.S Territories	5
Ohio	50	Arizona	7		
Pennsylvania	290	New Mexico	2	U.S. Total	1,289
West Virginia	8	Oklahoma	4	Percent of Total	93%
TOTAL	764	Texas	37	Foreign Countries	97
Percent of Total	55%	TOTAL	50	Percent of Total	7%
		Percent of Total	4%	TOTAL	1,386

CARNEGIE MELLON UNIVERSITY

UNDERGRADUATE HEADCOUNT ENROLLMENT BY REGION AND STATE OF PERMANENT RESIDENCE.
FALL SEMESTER 1996



REGION/STATE	REGION/STATE	REGION/STATE	REGION/STATE	REGION/STATE	REGION/STATE
New England	South	Midwest	West		
Connecticut	117	Arkansas	3	Illinois	69
Maine	19	Alabama	8	Indiana	33
Massachusetts	173	Florida	142	Iowa	13
New Hampshire	32	Georgia	42	Kansas	20
Rhode Island	9	Kentucky	19	Michigan	55
Vermont	18	Louisiana	13	Minnesota	31
TOTAL	368	Mississippi	3	Missouri	15
Percent of Total	8%	North Carolina	49	Nebraska	6
		South Carolina	19	North Dakota	2
Middle States		Tennessee	25	South Dakota	1
Delaware	17	Virginia	163	Wisconsin	22
District of Col.	22	TOTAL	486	TOTAL	267
Maryland	210	Percent of Total	10%	Percent of Total	6%
New Jersey	409	Southwest		Percent of Total	8%
New York	572				
Ohio	228	Arizona	19	U.S. Territories	18
Pennsylvania	1,191	New Mexico	8	U.S. Total	4,428
West Virginia	35	Oklahoma	16	Percent of Total	92%
TOTAL	2,684	Texas	104	Foreign Countries	395
Percent of Total	56%	TOTAL	147	Percent of Total	8%
		Percent of Total	3%	TOTAL	4,823

CARNEGIE MELLON UNIVERSITY

HEADCOUNT ENROLLMENT BY CONTINENT AND COUNTRY OF CITIZENSHIP
FALL SEMESTER 1996

Continent	Country	Undergraduate	Masters	Doctoral	Special	Total
Europe (cont'd)	Croatia	0	0	1	0	1
	Czech Republic	0	1	1	0	2
	Denmark	0	0	2	0	2
	Estonia	0	0	2	0	2
	Finland	0	0	3	0	3
	France	0	1	1	0	2
	Germany	2	2	11	0	15
	Greece	1	4	3	0	8
	Hungary	0	2	1	0	3
	Iceland	0	1	2	0	3
	Ireland	0	1	5	0	6
	Italy	1	7	8	0	16
	Netherlands	0	0	2	0	2
	Poland	0	0	3	0	3
	Portugal	0	0	3	0	3
	Romania	0	0	11	1	12
	Serbia	0	1	3	0	4
	Slovenia	0	1	2	0	3
	Spain	3	5	2	0	10
	Sweden	0	2	3	0	5
Switzerland	2	2	5	0	9	
Turkey	13	38	21	0	72	
Ukraine	0	1	0	0	1	
United Kingdom	10	3	7	0	20	
	TOTAL	33	77	108	1	219
Central/South America	Argentina	1	6	0	0	7
	Bermuda	1	0	0	0	1
	Bolivia	1	0	0	0	1
	Brazil	4	5	19	0	28
	Chile	1	4	2	0	7
	Colombia	0	1	2	0	3
	Costa Rica	0	0	1	0	1
	Ecuador	1	0	1	0	2
	Guatemala	2	1	0	0	3
	Jamaica	0	1	0	0	1
	Nicaragua	0	2	0	0	2
	Panama	0	1	0	0	1
	Peru	0	0	1	0	1
	Uruguay	0	0	1	0	1
Venezuela	5	9	3	0	17	
	TOTAL	16	30	30	0	76
North America	Canada	6	10	24	0	40
	Mexico	2	18	13	0	33
	US	4,428	1,072	485	123	6,108
	TOTAL	4,436	1,100	522	123	6,181
Other		42	210	57	0	309
Total Non-US Citizens		395	703	549	3	1,650
Total US Citizens		4,428	1,072	485	123	6,108
TOTAL		4,823	1,775	1,034	126	7,758

CARNEGIE MELLON UNIVERSITY

HEADCOUNT ENROLLMENT BY DEPARTMENT, LEVEL AND STATUS
FALL SEMESTER 1996

College	Department	Undergraduate			Masters			Doctoral			Total Students		
		Full	Part	Total	Full	Part	Total	Full	Part	Total	Full	Part	Total
	*BHA	61	0	61	0	0	0	0	0	0	61	0	61
CFA	Architecture	254	0	254	9	0	9	27	0	27	290	0	290
	Art	155	1	156	15	0	15	0	0	0	170	1	171
	Design	153	3	156	10	5	15	0	0	0	163	8	171
	Drama	192	4	196	40	8	48	0	0	0	232	12	244
	Music	129	3	132	34	27	61	0	0	0	163	30	193
	No Maj. Dept.	6	3	9	0	0	0	0	0	0	6	3	9
	TOTAL CFA	889	14	903	108	40	148	27	0	27	1,024	54	1,078
CIT	Biomedical E.	0	0	0	3	1	4	7	0	7	10	1	11
	Chemical E.	151	3	154	6	8	14	62	2	64	219	13	232
	Civil E.	103	2	105	24	3	27	34	5	39	161	10	171
	E & C E.	459	4	463	98	9	107	116	11	127	673	24	697
	EPP	0	0	0	1	0	1	28	4	32	29	4	33
	Mechanical E.	189	4	193	29	11	40	26	4	30	244	19	263
	MSE	39	1	40	24	0	24	36	3	39	99	4	103
	No Maj. Dept.	403	0	403	0	0	0	0	0	0	403	0	403
	Univ. Choice	6	0	6	0	0	0	0	0	0	6	0	6
	TOTAL CIT	1,350	14	1,364	185	32	217	309	29	338	1,844	75	1,919
GSIA	Indust. Admin.	0	0	0	468	34	502	98	1	99	566	35	601
	IA (Flex-Time)	0	0	0	0	175	175	0	0	0	0	0	175
	Indust. Mgmt.	391	4	395	0	0	0	0	0	0	391	4	395
	Univ. Choice	9	0	9	0	0	0	0	0	0	9	0	9
	TOTAL GSIA	400	4	404	468	209	677	98	1	99	966	214	1,180
H&SS	Economics	50	2	52	0	0	0	0	0	0	50	2	52
	English	130	6	136	44	9	53	13	21	34	187	36	223
	History	53	3	56	0	1	1	11	27	38	64	31	95
	Modern Lang.	7	3	10	0	0	0	2	1	3	9	4	13
	Philosophy	10	0	10	10	2	12	14	7	21	34	9	43
	Psychology	128	5	133	0	0	0	20	2	22	148	7	155
	S & D S.	236	7	243	0	0	0	16	6	22	252	13	265
	Statistics	4	1	5	13	1	14	10	3	13	27	5	32
	Student Def'd.	2	0	2	0	0	0	0	0	0	2	0	2
	No Maj. Dept.	428	2	430	0	0	0	0	0	0	428	2	430
	Univ. Choice	5	0	5	0	0	0	0	0	0	5	0	5
	TOTAL H&SS	1,053	29	1,082	67	13	80	86	67	153	1,206	109	1,315
INI		0	0	0	33	2	35	0	0	0	33	2	35
MCS	Biology	132	1	133	0	0	0	38	0	38	170	1	171
	Chemistry	71	1	72	1	1	2	52	1	53	124	3	127
	Math	71	2	73	0	0	0	32	0	32	103	2	105
	Physics	57	3	60	0	0	0	49	0	49	106	3	109
	No Maj. Dept.	196	1	197	0	0	0	0	0	0	196	1	197
	Univ. Choice	7	0	7	0	0	0	0	0	0	7	0	7
	TOTAL MCS	534	8	542	1	1	2	171	1	172	706	10	716
SCS	Comp. Sci.	374	8	382	3	0	3	128	13	141	505	21	526
	HCI	0	0	0	7	5	12	0	0	0	7	5	12
	LTI	0	0	0	8	3	11	4	0	4	12	3	15
	Math/Comp. Sci	71	9	80	0	0	0	0	0	0	71	9	80
	Robotics	0	0	0	0	1	1	66	1	67	66	2	68
	Software Eng.	0	0	0	23	14	37	0	0	0	23	14	37
	Univ. Choice	5	0	5	0	0	0	0	0	0	5	0	5
	TOTAL SCS	450	17	467	41	23	64	198	14	212	689	54	743
HNZ		0	0	0	261	291	552	33	0	33	294	291	585
	NON-DEGREE	0	0	0	0	0	0	0	0	0	7	119	126
TOTAL		4,737	86	4,823	1,164	611	1,775	922	112	1,034	6,830	928	7,758

*Bachelor of Humanities & Arts is a joint program between CFA & H&SS.

CARNEGIE MELLON UNIVERSITY

HEADCOUNT ENROLLMENT BY DEPARTMENT, LEVEL AND SEX
FALL SEMESTER 1996

College	Department	Undergraduate			Masters			Doctoral			Total Students		
		Male	Female	Total	Male	Female	Total	Male	Female	Total	Male	Female	Total
	*BHA	15	46	61	0	0	0	0	0	0	15	46	61
CFA	Architecture	154	100	254	7	2	9	20	7	27	181	109	290
	Art	65	91	156	4	11	15	0	0	0	69	102	171
	Design	67	89	156	6	9	15	0	0	0	73	98	171
	Drama	106	90	196	30	18	48	0	0	0	136	108	244
	Music	63	69	132	27	34	61	0	0	0	90	103	193
	No Major Dept.	5	4	9	0	0	0	0	0	0	5	4	9
	TOTAL CFA	460	443	903	74	74	148	20	7	27	554	524	1,078
CIT	Biomedical E.	0	0	0	4	0	4	5	2	7	9	2	11
	Chemical E.	108	46	154	11	3	14	51	13	64	170	62	232
	Civil E.	70	35	105	21	6	27	31	8	39	122	49	171
	E & C E.	427	36	463	95	12	107	111	16	127	633	64	697
	EPP	0	0	0	1	0	1	20	12	32	21	12	33
	Mechanical E.	168	25	193	36	4	40	27	3	30	231	32	263
	MSE	32	8	40	22	2	24	31	8	39	85	18	103
	No Major Dept.	312	91	403	0	0	0	0	0	0	312	91	403
	Univ. Choice	4	2	6	0	0	0	0	0	0	4	2	6
	TOTAL CIT	1,121	243	1,364	190	27	217	276	62	338	1,587	332	1,919
GSIA	Indust. Admin.	0	0	0	404	98	502	75	24	99	479	122	601
	IA (Flex-Time)	0	0	0	149	26	175	0	0	0	149	26	175
	Indust. Mgmt.	290	105	395	0	0	0	0	0	0	290	105	395
	Univ. Choice	6	3	9	0	0	0	0	0	0	6	3	9
	TOTAL GSIA	296	108	404	553	124	677	75	24	99	924	256	1,180
H&SS	Economics	36	16	52	0	0	0	0	0	0	36	16	52
	English	60	76	136	16	37	53	13	21	34	89	134	223
	History	35	21	56	0	1	1	24	14	38	59	36	95
	Modern Lang.	1	9	10	0	0	0	1	2	3	2	11	13
	Philosophy	9	1	10	8	4	12	17	4	21	34	9	43
	Psychology	52	81	133	0	0	0	15	7	22	67	88	155
	S & D S.	179	64	243	0	0	0	13	9	22	192	73	265
	Statistics	2	3	5	9	5	14	10	3	13	21	11	32
	Student Def'd.	1	1	2	0	0	0	0	0	0	1	1	2
	No Major Dept.	240	190	430	0	0	0	0	0	0	240	190	430
	Univ. Choice	5	0	5	0	0	0	0	0	0	5	0	5
	TOTAL H&SS	620	462	1,082	33	47	80	93	60	153	746	569	1,315
INI		0	0	0	30	5	35	0	0	0	30	5	35
MCS	Biology	66	67	133	0	0	0	21	17	38	87	84	171
	Chemistry	36	36	72	1	1	2	30	23	53	67	60	127
	Math	45	28	73	0	0	0	28	4	32	73	32	105
	Physics	54	6	60	0	0	0	43	6	49	97	12	109
	No Major Dept.	135	62	197	0	0	0	0	0	0	135	62	197
	Univ. Choice	4	3	7	0	0	0	0	0	0	4	3	7
	TOTAL MCS	340	202	542	1	1	2	122	50	172	463	253	716
SCS	Comp. Sci.	341	41	382	2	1	3	121	20	141	464	62	526
	HCI	0	0	0	10	2	12	0	0	0	10	2	12
	LTI	0	0	0	6	5	11	4	0	4	10	5	15
	Math/C. S.	74	6	80	0	0	0	0	0	0	74	6	80
	Robotics	0	0	0	1	0	1	56	11	67	57	11	68
	Software Eng.	0	0	0	31	6	37	0	0	0	31	6	37
	Univ. Choice	2	3	5	0	0	0	0	0	0	2	3	5
	TOTAL SCS	417	50	467	50	14	64	181	31	212	648	95	743
HNZ		0	0	0	255	297	552	24	9	33	279	306	585
	NON-DEGREE	0	0	0	0	0	0	0	0	0	61	65	126
TOTAL		3,269	1,554	4,823	1,186	589	1,775	791	243	1,034	5,307	2,451	7,758

*Bachelor of Humanities & Arts is a joint program between CFA & H&SS.

CARNEGIE MELLON UNIVERSITY

HEADCOUNT ENROLLMENT BY DEPARTMENT AND CLASS.
FALL SEMESTER 1996

College	Department	Undergraduate					Total	Masters	Doctoral	Headcount
		Fresh.**	Soph.	Junr.	Senr.	5th Yr.		Total	Total	Total
	*BHA	14	15	14	18	0	61	0	0	61
CFA	Architecture	60	52	45	55	42	254	9	27	290
	Art	45	47	33	31	0	156	15	0	171
	Design	45	36	32	42	1	156	15	0	171
	Drama	53	59	39	44	1	196	48	0	244
	Music	42	38	26	21	5	132	61	0	193
	No Major Dept.	0	4	4	1	0	9	0	0	9
	TOTAL CFA	245	236	179	194	49	903	148	27	1,078
CIT	Biomedical E.	0	0	0	0	0	0	4	7	11
	Chemical E.	1	57	47	45	4	154	14	64	232
	Civil E.	0	35	31	32	7	105	27	39	171
	E & C E.	1	180	134	137	11	463	107	127	697
	EPP	0	0	0	0	0	0	1	32	33
	Mechanical E.	1	69	56	56	11	193	40	30	263
	MSE	0	16	13	8	3	40	24	39	103
	No Major Dept.	398	5	0	0	0	403	0	0	403
	Univ. Choice	6	0	0	0	0	6	0	0	6
	TOTAL CIT	407	362	281	278	36	1,364	217	338	1,919
GSIA	Indust. Admin.	0	0	0	0	0	0	502	99	601
	IA (Flex-Time)	0	0	0	0	0	0	175	0	175
	Indust. Mgmt.	104	91	91	97	12	395	0	0	395
	Univ. Choice	6	3	0	0	0	9	0	0	9
	Total GSIA	110	94	91	97	12	404	677	99	1,180
H&SS	Economics	0	14	19	15	4	52	0	0	52
	English	0	29	47	51	9	136	53	34	223
	History	0	8	25	21	2	56	1	38	95
	Modern Lang.	0	6	2	1	1	10	0	3	13
	Philosophy	0	3	3	3	1	10	12	21	43
	Psychology	0	30	50	43	10	133	0	22	155
	S & D S.	0	57	79	87	20	243	0	22	265
	Statistics	0	1	1	3	0	5	14	13	32
	Student Def'd.	0	1	0	1	0	2	0	0	2
	No Major Dept.	318	102	8	2	0	430	0	0	430
	Univ. Choice	5	0	0	0	0	5	0	0	5
	TOTAL H&SS	323	251	234	227	47	1,082	80	153	1,315
	INI	0	0	0	0	0	0	35	0	35
MCS	Biology	0	50	37	44	2	133	0	38	171
	Chemistry	0	20	23	27	2	72	2	53	127
	Math	1	25	22	21	4	73	0	32	105
	Physics	0	35	9	13	3	60	0	49	109
	No Major Dept.	184	9	4	0	0	197	0	0	197
	Univ. Choice	7	0	0	0	0	7	0	0	7
	TOTAL MCS	192	139	95	105	11	542	2	172	716
SCS	Comp. Sci.	133	96	108	41	4	382	3	141	526
	HCI	0	0	0	0	0	0	12	0	12
	LTI	0	0	0	0	0	0	11	4	15
	Math/C. S.	0	0	5	68	7	80	0	0	80
	Robotics	0	0	0	0	0	0	1	67	68
	Software Eng.	0	0	0	0	0	0	37	0	37
	Univ. Choice	5	0	0	0	0	5	0	0	5
	TOTAL SCS	138	96	113	109	11	467	64	212	743
HNZ		0	0	0	0	0	0	552	33	585
	NON-DEGREE	0	0	0	0	0	0	0	0	126
TOTAL		1,429	1,193	1,007	1,028	166	4,823	1,775	1,034	7,758

* Bachelor of Humanities & Arts is a joint program between CFA & H&SS.

** Includes first-time and transfer freshmen.

CARNEGIE MELLON UNIVERSITY

FULL TIME EQUIVALENT (FTE) ENROLLMENT BY DEPARTMENT AND CLASS
FALL SEMESTER 1996

College	Department	Undergraduate					Total	Masters	Doctoral	FTE
		Fresh.	Soph.	Junr.	Senr.	5th Yr.		Total	Total	Total
	*BHA	14.0	15.0	14.0	18.0	0.0	61.0	0.0	0.0	61.0
CFA	Architecture	60.0	52.0	45.0	55.0	42.0	254.0	9.0	27.0	290.0
	Art	45.0	47.0	33.0	30.8	0.0	155.8	15.0	0.0	170.8
	Design	45.0	35.8	31.8	41.3	1.0	154.9	12.9	0.0	167.8
	Drama	53.0	58.8	39.0	43.7	0.3	194.8	44.9	0.0	239.7
	Music	41.7	38.0	26.0	20.8	4.3	130.8	52.3	0.0	183.1
	No Major Dept.	0.0	3.8	3.9	0.8	0.0	8.5	0.0	0.0	8.5
	TOTAL CFA	244.7	235.4	178.7	192.4	47.6	898.8	134.1	27.0	1,059.9
CIT	Biomedical E.	0.0	0.0	0.0	0.0	0.0	0.0	3.3	7.0	10.3
	Chemical E.	1.0	57.0	47.0	44.9	3.2	153.1	9.8	62.9	225.8
	Civil E.	0.0	34.3	31.0	32.0	6.5	103.8	25.0	35.1	163.9
	E & C E.	1.0	180.0	133.5	137.0	9.5	461.0	102.3	120.4	683.7
	EPP	0.0	0.0	0.0	0.0	0.0	0.0	1.0	30.3	31.3
	Mechanical E.	1.0	69.0	54.8	55.9	10.6	191.3	32.8	27.1	251.2
	MSE	0.0	16.0	13.0	7.3	3.0	39.3	24.0	36.4	99.7
	No Major Dept.	398.0	5.0	0.0	0.0	0.0	403.0	0.0	0.0	403.0
	Univ. Choice	6.0	0.0	0.0	0.0	0.0	6.0	0.0	0.0	6.0
	TOTAL CIT	407.0	361.3	279.3	277.1	32.8	1,357.5	198.2	319.2	1,874.9
GZIA	Indust. Admin.	0.0	0.0	0.0	0.0	0.0	0.0	496.8	98.2	595.0
	IA (Flex-Time)	0.0	0.0	0.0	0.0	0.0	0.0	82.3	0.0	82.3
	Indust. Mgmt.	104.0	90.3	90.3	96.5	11.5	392.5	0.0	0.0	392.5
	Univ. Choice	6.0	3.0	0.0	0.0	0.0	9.0	0.0	0.0	9.0
	Total GZIA	110.0	93.3	90.3	96.5	11.5	401.5	579.1	98.2	1,078.8
H&SS	Economics	0.0	14.0	19.0	14.8	3.5	51.3	0.0	0.0	51.3
	English	0.0	29.0	46.5	50.5	7.6	133.6	47.6	16.7	197.9
	History	0.0	8.0	25.0	20.6	2.0	55.6	0.1	15.5	71.2
	Modern Lang.	0.0	5.8	1.5	1.0	0.3	8.6	0.0	2.8	11.4
	Philosophy	0.0	3.0	3.0	3.0	1.0	10.0	10.5	15.0	35.5
	Psychology	0.0	30.0	50.0	42.8	8.0	130.8	0.0	20.3	151.1
	S & D S.	0.0	57.0	78.8	85.8	18.5	240.1	0.0	16.8	256.9
	Statistics	0.0	1.0	1.0	2.3	0.0	4.3	13.3	10.8	28.4
	Student Def'd.	0.0	1.0	0.0	1.0	0.0	2.0	0.0	0.0	2.0
	No Major Dept.	318.0	101.3	8.0	2.0	0.0	429.3	0.0	0.0	429.3
	Univ. Choice	5.0	0.0	0.0	0.0	0.0	5.0	0.0	0.0	5.0
	TOTAL H&SS	323.0	250.1	232.8	223.8	40.9	1,070.5	71.5	97.9	1,239.9
INI		0.0	0.0	0.0	0.0	0.0	0.0	33.9	0.0	33.9
MCS	Biology	0.0	50.0	37.0	44.0	1.5	132.5	0.0	38.0	170.5
	Chemistry	0.0	20.0	23.0	26.3	2.0	71.3	1.6	52.1	125.0
	Math	1.0	25.0	22.0	20.3	3.3	71.5	0.0	32.0	103.5
	Physics	0.0	34.6	9.0	13.0	2.5	59.1	0.0	49.0	108.1
	No Major Dept.	184.0	9.0	3.6	0.0	0.0	196.6	0.0	0.0	196.6
	Univ. Choice	7.0	0.0	0.0	0.0	0.0	7.0	0.0	0.0	7.0
	TOTAL MCS	192.0	138.6	94.6	103.6	9.3	538.0	1.6	171.1	710.7
SCS	Comp. Sci.	133.0	95.3	108.0	39.2	2.5	378.0	3.0	131.4	512.4
	HCI	0.0	0.0	0.0	0.0	0.0	0.0	10.2	0.0	10.2
	LTI	0.0	0.0	0.0	0.0	0.0	0.0	9.2	4.0	13.2
	Math/C.S.	0.0	0.0	4.5	65.2	6.6	76.3	0.0	0.0	76.3
	Robotics	0.0	0.0	0.0	0.0	0.0	0.0	0.7	66.1	66.8
	Software Eng.	0.0	0.0	0.0	0.0	0.0	0.0	30.6	0.0	30.6
	Univ. Choice	5.0	0.0	0.0	0.0	0.0	5.0	0.0	0.0	5.0
	TOTAL SCS	138.0	95.3	112.5	104.4	9.1	459.3	53.6	201.5	714.4
HNZ		0.0	0.0	0.0	0.0	0.0	0.0	360.3	33.0	393.3
	NON-DEGREE	0.0	0.0	0.0	0.0	0.0	0.0	0.0	0.0	41.9
TOTAL		1,428.7	1,188.9	1,002.2	1,015.7	151.1	4,786.6	1,432.3	947.9	7,208.7

*Bachelor of Humanities & Arts is a joint program between CFA & H&SS.

** Includes first-time and transfer freshmen.

CARNEGIE MELLON UNIVERSITY

HEADCOUNT AND FTE ENROLLMENT BY COLLEGE, LEVEL AND STATUS
FALL SEMESTERS 1991 to 1996

College Status	1991			1992			1993		
	Underg.	Grad.	Total	Underg.	Grad.	Total	Underg.	Grad.	Total
*BHA Headcount									
Full	N/A	N/A	N/A	N/A	N/A	N/A	N/A	N/A	N/A
Part	N/A	N/A	N/A	N/A	N/A	N/A	N/A	N/A	N/A
Total	N/A	N/A	N/A	N/A	N/A	N/A	N/A	N/A	N/A
FTE	N/A	N/A	N/A	N/A	N/A	N/A	N/A	N/A	N/A
CFA Headcount									
Full	925	63	988	864	56	920	864	92	956
Part	17	70	87	46	83	129	45	72	117
Total	942	133	1,075	910	139	1,049	909	164	1,073
FTE	936.0	104.1	1,040.1	892.1	104.8	996.9	894.9	140.0	1,034.9
CIT Headcount									
Full	1,265	499	1,764	1,330	441	1,771	1,330	496	1,826
Part	15	89	104	21	120	141	21	96	117
Total	1,280	588	1,868	1,351	561	1,912	1,351	592	1,943
FTE	1,274.2	528.4	1,802.5	1,343.9	485.9	1,829.7	1,343.7	527.6	1,871.3
GSIA Headcount									
Full	289	476	765	277	455	732	289	455	744
Part	6	174	180	10	206	216	7	174	181
Total	295	650	945	287	661	948	296	629	925
FTE	292.3	588.4	880.7	281.3	568.5	849.8	293.3	544.5	837.8
H&SS Headcount									
Full	860	158	1,018	852	165	1,017	898	165	1,063
Part	31	102	133	47	101	148	34	99	133
Total	891	260	1,151	899	266	1,165	932	264	1,196
FTE	877.9	180.0	1,058.0	880.5	188.6	1,069.1	922.0	186.0	1,108.0
INI Headcount									
Full	0	46	46	0	45	45	0	36	36
Part	0	0	0	0	0	0	0	0	0
Total	0	46	46	0	45	45	0	36	36
FTE	0.0	46.0	46.0	0.0	45.0	45.0	0.0	36.0	36.0
MCS Headcount									
Full	616	194	810	558	197	755	626	204	830
Part	17	16	33	22	19	41	12	12	24
Total	633	210	843	580	216	796	638	216	854
FTE	624.1	200.6	824.8	569.9	204.9	774.8	632.7	208.4	841.1
SCS Headcount									
Full	236	231	467	265	222	487	246	240	486
Part	8	25	33	10	26	36	16	22	38
Total	244	256	500	275	248	523	262	262	524
FTE	241.6	240.6	482.2	270.9	230.1	501.0	255.8	248.9	504.7
HNZ Headcount									
Full	0	231	231	0	215	215	0	242	242
Part	0	338	338	0	306	306	0	298	298
Total	0	569	569	0	521	521	0	540	540
FTE	0.0	339.6	339.6	0.0	316.9	316.9	0.0	339.4	339.4
TOTAL** Headcount									
Full	4,191	1,898	6,095	4,146	1,796	5,949	4,253	1,930	6,195
Part	94	814	1,053	156	861	1,182	135	773	1,064
Total	4,285	2,712	7,148	4,302	2,657	7,131	4,388	2,703	7,259
FTE	4,246.0	2,227.8	6,526.5	4,238.6	2,144.6	6,444.8	4,342.4	2,230.8	6,641.7

*Bachelor of Humanities & Arts is a joint program between CFA & H&SS.

**Total includes Non-Degree Headcount and FTE Enrollment

CARNEGIE MELLON UNIVERSITY

HEADCOUNT AND FTE ENROLLMENT BY COLLEGE, LEVEL AND STATUS
FALL SEMESTERS 1991 to 1996

College Status	1994			1995			1996		
	Underg.	Grad.	Total	Underg.	Grad.	Total	Underg.	Grad.	Total
*BHA Headcount									
Full	N/A	N/A	N/A	44	0	44	61	0	61
Part	N/A	N/A	N/A	1	0	1	0	0	0
Total	N/A	N/A	N/A	45	0	45	61	0	61
FTE	N/A	N/A	N/A	44.9	0.0	44.9	61.0	0.0	61.0
CFA Headcount									
Full	904	148	1,052	877	132	1,009	889	135	1,024
Part	17	51	68	33	45	78	14	40	54
Total	921	199	1,120	910	177	1,087	903	175	1,078
FTE	917.0	184.0	1,101.0	900.3	160.3	1,060.6	898.8	161.1	1,059.9
CIT Headcount									
Full	1,304	451	1,755	1,305	456	1,761	1,350	494	1,844
Part	15	91	106	15	89	104	14	61	75
Total	1,319	542	1,861	1,320	545	1,865	1,364	555	1,919
FTE	1,314.0	480.0	1,794.0	1,313.8	487.2	1,801.0	1,357.5	517.4	1,874.9
GSIA Headcount									
Full	345	503	848	323	576	899	400	566	966
Part	7	175	182	7	130	137	4	210	214
Total	352	678	1,030	330	706	1,036	404	776	1,180
FTE	349.0	601.0	950.0	326.5	653.5	980.0	401.5	677.3	1,078.8
H&SS Headcount									
Full	887	158	1,045	966	152	1,118	1,053	153	1,206
Part	23	106	129	27	97	124	29	80	109
Total	910	264	1,174	993	249	1,242	1,082	233	1,315
FTE	870.0	182.0	1,052.0	982.2	173.1	1,155.2	1,070.5	169.4	1,239.9
INI Headcount									
Full	0	32	32	0	29	29	0	33	33
Part	0	0	0	0	2	2	0	2	2
Total	0	32	32	0	31	31	0	35	35
FTE	0.0	32.0	32.0	0.0	29.8	29.8	0.0	33.9	33.9
MCS Headcount									
Full	511	201	712	554	179	733	534	172	706
Part	24	8	32	12	6	18	8	2	10
Total	535	209	744	566	185	751	542	174	716
FTE	522.0	203.0	725.0	560.7	180.9	741.5	538.0	172.7	710.7
SCS Headcount									
Full	389	239	628	397	235	632	450	239	689
Part	11	22	33	11	17	28	17	37	54
Total	400	261	661	408	252	660	467	276	743
FTE	396.0	250.0	646.0	401.0	241.2	642.2	459.3	255.2	714.5
HNZ Headcount									
Full	0	236	236	0	259	259	0	294	294
Part	0	283	283	0	256	256	0	291	291
Total	0	519	519	0	515	515	0	585	585
FTE	0.0	323.0	323.0	0.0	342.8	342.8	0.0	393.3	393.3
TOTAL** Headcount									
Full	4,340	1,968	6,308	4,466	2,018	6,484	4,737	2,086	6,823
Part	97	736	974	106	642	883	86	723	935
Total	4,437	2,704	7,282	4,572	2,660	7,367	4,823	2,809	7,758
FTE	4,368.0	2,255.0	6,691.5	4,529.4	2,268.5	6,855.3	4,786.6	2,380.3	7,208.7

*Bachelor of Humanities & Arts is a joint program between CFA & H&SS.

**Total includes Non-Degree Headcount and FTE Enrollment

CARNEGIE MELLON UNIVERSITY

**UNDERGRADUATE HEADCOUNT ENROLLMENT BY DEPARTMENT, RACE AND SEX
FALL SEMESTER 1996**

College	Department	NRA			Black			A/PI			AI/AN		
		M	F	T	M	F	T	M	F	T	M	F	T
	*BHA	1	1	2	0	2	2	4	1	5	0	0	0
CFA													
	Architecture	17	13	30	2	0	2	30	28	58	1	0	1
	Art	2	3	5	4	4	8	3	7	10	1	0	1
	Design	3	3	6	4	0	4	9	11	20	0	0	0
	Drama	1	2	3	7	7	14	2	2	4	0	1	1
	Music	3	6	9	1	3	4	2	3	5	0	1	1
	University Choice	0	0	0	0	0	0	0	0	0	0	0	0
	No Major Dept.	0	1	1	0	0	0	2	2	4	0	0	0
	TOTAL CFA	26	28	54	18	14	32	48	53	101	2	2	4
CIT													
	Chemical E.	10	2	12	3	5	8	23	11	34	0	0	0
	Civil E.	5	2	7	6	2	8	10	2	12	0	0	0
	E & C E.	49	3	52	16	1	17	84	13	97	2	0	2
	Mechanical E.	16	0	16	10	3	13	18	3	21	0	0	0
	MSE	0	1	1	0	1	1	5	2	7	0	0	0
	University Choice	0	0	0	0	0	0	2	1	3	0	0	0
	No Major Dept.	30	10	40	10	10	20	72	9	81	0	0	0
	TOTAL CIT	110	18	128	45	22	67	214	41	255	2	0	2
H&SS													
	Economics	8	4	12	1	0	1	7	4	11	0	0	0
	English	0	0	0	4	1	5	3	5	8	1	1	2
	History	0	0	0	2	6	8	3	1	4	0	0	0
	Modern Lang.	0	0	0	0	1	1	0	1	1	0	0	0
	Philosophy	0	0	0	2	0	2	0	0	0	0	0	0
	Psychology	2	2	4	6	7	13	7	19	26	0	0	0
	S & D S.	24	10	34	3	4	7	32	13	45	0	0	0
	Statistics	0	0	0	0	0	0	0	0	0	0	0	0
	Student Def'd.	0	0	0	0	0	0	0	0	0	0	0	0
	University Choice	0	0	0	0	0	0	3	0	3	0	0	0
	No Major Dept.	18	12	30	10	7	17	50	44	94	1	0	1
	TOTAL H&SS	52	28	80	28	26	54	105	87	192	2	1	3
GSIA													
	Indust. Mgmt.	47	19	66	7	10	17	73	31	104	2	0	2
	Univ. Choice	0	0	0	0	0	0	2	1	3	0	0	0
	TOTAL GSIA	47	19	66	7	10	17	75	32	107	2	0	2
MCS													
	Biology	5	3	8	1	3	4	23	20	43	0	0	0
	Chemistry	3	1	4	3	4	7	4	4	8	0	0	0
	Math	1	3	4	1	1	2	1	4	5	0	0	0
	Physics	3	0	3	1	0	1	2	0	2	0	0	0
	University Choice	0	0	0	0	0	0	1	0	1	0	0	0
	No Major Dept.	4	2	6	4	6	10	23	8	31	0	0	0
	TOTAL MCS	16	9	25	10	14	24	54	36	90	0	0	0
SCS													
	Comp. Sci.	23	9	32	12	1	13	48	11	59	1	0	1
	Math/C.S.	4	4	8	2	0	2	11	0	11	0	0	0
	University Choice	0	0	0	1	0	1	0	0	0	0	0	0
	TOTAL SCS	27	13	40	15	1	16	59	11	70	1	0	1
TOTAL		279	116	395	123	89	212	559	261	820	9	3	12

*Bachelor of Humanities & Arts is a joint program between CFA & H&SS.

CARNEGIE MELLON UNIVERSITY

UNDERGRADUATE HEADCOUNT ENROLLMENT BY DEPARTMENT, RACE AND SEX
FALL SEMESTER 1996

College	Department	Hispanic			White			Unknown			Total		
		M	F	T	M	F	T	M	F	T	M	F	T
CFA	*BHA	1	3	4	9	26	35	0	13	13	15	46	61
	Architecture	3	1	4	71	40	111	30	18	48	154	100	254
	Art	3	10	13	36	43	79	16	24	40	65	91	156
	Design	3	3	6	36	50	86	12	22	34	67	89	156
	Drama	5	4	9	72	53	125	19	21	40	106	90	196
	Music	3	2	5	36	38	74	18	16	34	63	69	132
	University Choice	0	0	0	0	0	0	0	0	0	0	0	0
	No Major Dept.	0	0	0	1	0	1	2	1	3	5	4	9
TOTAL CFA	17	20	37	252	224	476	97	102	199	460	443	903	
CIT	Chemical E.	3	2	5	56	24	80	13	2	15	108	46	154
	Civil E.	2	5	7	42	17	59	5	7	12	70	35	105
	E & C E.	13	1	14	198	15	213	65	3	68	427	36	463
	Mechanical E.	15	1	16	88	16	104	21	2	23	168	25	193
	MSE	0	0	0	23	3	26	4	1	5	32	8	40
	University Choice	0	0	0	1	1	2	1	0	1	4	2	6
	No Major Dept.	14	7	21	142	48	190	44	7	51	312	91	403
	TOTAL CIT	47	16	63	550	124	674	153	22	175	1,121	243	1,364
H&SS	Economics	2	0	2	13	4	17	5	4	9	36	16	52
	English	3	3	6	32	50	82	17	16	33	60	76	136
	History	1	2	3	23	10	33	6	2	8	35	21	56
	Modern Lang.	0	0	0	1	2	3	0	5	5	1	9	10
	Philosophy	0	0	0	4	1	5	3	0	3	9	1	10
	Psychology	2	4	6	29	38	67	6	11	17	52	81	133
	S & D S.	8	1	9	80	31	111	32	5	37	179	64	243
	Statistics	0	0	0	2	1	3	0	2	2	2	3	5
	Student Def'd.	0	0	0	1	0	1	0	1	1	1	1	2
	University Choice	0	0	0	1	0	1	1	0	1	5	0	5
	No Major Dept.	8	8	16	112	86	198	41	33	74	240	190	430
	TOTAL H&SS	24	18	42	298	223	521	111	79	190	620	462	1,082
	GSIA	Indust. Mgmt.	10	3	13	104	35	139	47	7	54	290	105
University Choice		1	1	2	3	0	3	0	1	1	6	3	9
TOTAL GSIA		11	4	15	107	35	142	47	8	55	296	108	404
MCS	Biology	1	3	4	29	27	56	7	11	18	66	67	133
	Chemistry	2	2	4	17	20	37	7	5	12	36	36	72
	Math	1	2	3	33	12	45	8	6	14	45	28	73
	Physics	0	0	0	36	6	42	12	0	12	54	6	60
	University Choice	0	0	0	3	1	4	0	2	2	4	3	7
	No Major Dept.	6	1	7	66	34	100	32	11	43	135	62	197
	TOTAL MCS	10	8	18	184	100	284	66	35	101	340	202	542
SCS	Comp. Sci.	13	0	13	167	15	182	77	5	82	341	41	382
	Math/C.S.	1	0	1	42	2	44	14	0	14	74	6	80
	University Choice	0	0	0	1	3	4	0	0	0	2	3	5
	TOTAL SCS	14	0	14	210	20	230	91	5	96	417	50	467
TOTAL	124	69	193	1,610	752	2,362	565	264	829	3,269	1,554	4,823	

*Bachelor of Humanities & Arts is a joint program between CFA & H&SS.

CARNEGIE MELLON UNIVERSITY

MASTERS HEADCOUNT ENROLLMENT BY DEPARTMENT, RACE AND SEX
FALL SEMESTER 1996

College		NRA			Black			A/PI			AI/AN		
Department	M	F	T	M	F	T	M	F	T	M	F	T	
CFA													
Architecture	5	2	7	0	0	0	0	0	0	0	0	0	
Art	2	2	4	0	0	0	0	1	1	0	0	0	
Design	1	1	2	0	0	0	0	0	0	0	0	0	
Drama	8	3	11	0	0	0	0	0	0	0	0	0	
Music	14	12	26	0	0	0	0	0	0	0	0	0	
TOTAL CFA	30	20	50	0	0	0	0	1	1	0	0	0	
CIT													
Biomedical E.	3	0	3	0	0	0	0	0	0	0	0	0	
Chemical E.	4	0	4	1	1	2	0	0	0	0	0	0	
Civil E.	12	3	15	0	0	0	0	1	1	0	0	0	
E & C E.	38	2	40	2	0	2	4	6	10	0	0	0	
EPP	1	0	1	0	0	0	0	0	0	0	0	0	
Mechanical E.	17	1	18	0	0	0	1	0	1	0	0	0	
MSE	18	2	20	0	0	0	0	0	0	0	0	0	
TOTAL CIT	93	8	101	3	1	4	5	7	12	0	0	0	
GSIA													
Indust. Admin.	194	54	248	3	1	4	27	6	33	1	0	1	
IA (Flex-time)	64	10	74	1	0	1	5	0	5	0	0	0	
TOTAL GSIA	258	64	322	4	1	5	32	6	38	1	0	1	
H&SS													
English	2	6	8	0	0	0	0	4	4	0	0	0	
History	0	0	0	0	0	0	0	0	0	0	0	0	
Philosophy	4	2	6	0	0	0	0	0	0	0	0	0	
Psychology	0	0	0	0	0	0	0	0	0	0	0	0	
S & D S.	0	0	0	0	0	0	0	0	0	0	0	0	
Statistics	3	3	6	0	0	0	1	0	1	0	0	0	
TOTAL H&SS	9	11	20	0	0	0	1	4	5	0	0	0	
INI													
	17	5	22	0	0	0	1	0	1	0	0	0	
MCS													
Biology	0	0	0	0	0	0	0	0	0	0	0	0	
Chemistry	0	1	1	0	0	0	0	0	0	0	0	0	
Math	0	0	0	0	0	0	0	0	0	0	0	0	
Physics	0	0	0	0	0	0	0	0	0	0	0	0	
TOTAL MCS	0	1	1	0	0	0	0	0	0	0	0	0	
SCS													
Comp. Sci.	0	0	0	0	0	0	0	0	0	0	0	0	
HCI	4	1	5	0	0	0	0	0	0	0	0	0	
LTI	2	3	5	0	0	0	0	1	1	0	0	0	
Math/C.S.	0	0	0	0	0	0	0	0	0	0	0	0	
Robotics	0	0	0	0	0	0	0	0	0	0	0	0	
Software Eng.	13	3	16	0	0	0	0	0	0	0	0	0	
TOTAL SCS	19	7	26	0	0	0	0	1	1	0	0	0	
HNZ													
MPM	55	47	102	6	6	12	1	3	4	0	0	0	
PPM	33	19	52	13	18	31	7	10	17	0	0	0	
SPM	3	4	7	2	0	2	0	1	1	0	0	0	
TOTAL HNZ	91	70	161	21	24	45	8	14	22	0	0	0	
TOTAL	517	186	703	28	26	54	47	33	80	1	0	1	

CARNEGIE MELLON UNIVERSITY

MASTERS HEADCOUNT ENROLLMENT BY DEPARTMENT, RACE AND SEX
FALL SEMESTER 1996

College		Hisp.			White			Unkn.			Total		
Department	M	F	T	M	F	T	M	F	T	M	F	T	
CFA													
Architecture	1	0	1	1	0	1	0	0	0	7	2	9	
Art	0	0	0	1	2	3	1	6	7	4	11	15	
Design	0	1	1	2	1	3	3	6	9	6	9	15	
Drama	0	0	0	5	3	8	17	12	29	30	18	48	
Music	0	0	0	5	5	10	8	17	25	27	34	61	
TOTAL CFA	1	1	2	14	11	25	29	41	70	74	74	148	
CIT													
Biomedical E.	0	0	0	1	0	1	0	0	0	4	0	4	
Chemical E.	0	0	0	1	0	1	5	2	7	11	3	14	
Civil E.	0	0	0	9	2	11	0	0	0	21	6	27	
E & C E.	0	0	0	40	4	44	11	0	11	95	12	107	
EPP	0	0	0	0	0	0	0	0	0	1	0	1	
Mechanical E.	0	0	0	11	2	13	7	1	8	36	4	40	
MSE	0	0	0	3	0	3	1	0	1	22	2	24	
TOTAL CIT	0	0	0	65	8	73	24	3	27	190	27	217	
GSIA													
Indust. Admin.	1	1	2	96	24	120	82	12	94	404	98	502	
IA (Flex-time)	3	0	3	69	14	83	7	2	9	149	26	175	
TOTAL GSIA	4	1	5	165	38	203	89	14	103	553	124	677	
H&SS													
English	2	0	2	10	22	32	2	5	7	16	37	53	
History	0	0	0	0	0	0	0	1	1	0	1	1	
Philosophy	0	0	0	1	0	1	3	2	5	8	4	12	
Psychology	0	0	0	0	0	0	0	0	0	0	0	0	
S & D S.	0	0	0	0	0	0	0	0	0	0	0	0	
Statistics	0	0	0	2	1	3	3	1	4	9	5	14	
TOTAL H&SS	2	0	2	13	23	36	8	9	17	33	47	80	
INI	0	0	0	6	0	6	6	0	6	30	5	35	
MCS													
Biology	0	0	0	0	0	0	0	0	0	0	0	0	
Chemistry	0	0	0	0	0	0	1	0	1	1	1	2	
Math	0	0	0	0	0	0	0	0	0	0	0	0	
Physics	0	0	0	0	0	0	0	0	0	0	0	0	
TOTAL MCS	0	0	0	0	0	0	1	0	1	1	1	2	
SCS													
Comp. Sci.	0	0	0	1	0	1	1	1	2	2	1	3	
HCI	0	0	0	3	1	4	3	0	3	10	2	12	
LTI	0	0	0	4	1	5	0	0	0	6	5	11	
Math/C.S.	0	0	0	0	0	0	0	0	0	0	0	0	
Robotics	0	0	0	1	0	1	0	0	0	1	0	1	
Software Eng.	0	0	0	9	1	10	9	2	11	31	6	37	
TOTAL SCS	0	0	0	18	3	21	13	3	16	50	14	64	
HNZ													
MPM	0	2	2	51	81	132	23	32	55	136	171	307	
PPM	8	5	13	41	54	95	2	4	6	104	110	214	
SPM	0	0	0	7	7	14	3	4	7	15	16	31	
TOTAL HNZ	8	7	15	99	142	241	28	40	68	255	297	552	
TOTAL	15	9	24	380	225	605	198	110	308	1,186	589	1,775	

CARNEGIE MELLON UNIVERSITY

DOCTORAL HEADCOUNT ENROLLMENT BY DEPARTMENT, RACE AND SEX
FALL SEMESTER 1996

College	Department	NRA			Black			A/PI			AI/AN		
		M	F	T	M	F	T	M	F	T	M	F	T
CFA	Architecture	17	6	23	0	0	0	0	0	0	0	0	0
	Art	0	0	0	0	0	0	0	0	0	0	0	0
	Design	0	0	0	0	0	0	0	0	0	0	0	0
	Drama	0	0	0	0	0	0	0	0	0	0	0	0
	Music	0	0	0	0	0	0	0	0	0	0	0	0
	TOTAL CFA	17	6	23	0	0	0	0	0	0	0	0	0
CIT	Biomedical E.	2	1	3	0	0	0	0	0	0	0	0	0
	Chemical E.	20	2	22	0	0	0	2	1	3	0	0	0
	Civil E.	23	3	26	0	0	0	1	0	1	0	0	0
	E & C E.	76	10	86	2	0	2	3	1	4	0	0	0
	EPP	11	6	17	0	0	0	0	0	0	1	0	1
	Mechanical E.	17	1	18	0	0	0	2	0	2	0	0	0
	MSE	22	3	25	0	0	0	0	0	0	0	0	0
	TOTAL CIT	171	26	197	2	0	2	8	2	10	1	0	1
GSIA		60	17	77	0	1	1	0	1	1	0	0	0
H&SS	English	2	0	2	0	0	0	0	1	1	0	0	0
	History	6	4	10	1	1	2	0	0	0	0	0	0
	Modern Lang.	0	1	1	0	0	0	0	0	0	0	0	0
	Philosophy	9	2	11	0	0	0	1	0	1	0	0	0
	Psychology	2	0	2	0	0	0	0	0	0	0	0	0
	S & D S.	4	4	8	0	0	0	1	0	1	0	0	0
	Statistics	4	1	5	0	0	0	0	0	0	0	0	0
	TOTAL H&SS	27	12	39	1	1	2	2	1	3	0	0	0
MCS	Biology	7	7	14	0	1	1	0	0	0	0	0	0
	Chemistry	11	11	22	1	0	1	0	0	0	0	0	0
	Math	24	2	26	0	0	0	0	0	0	0	0	0
	Physics	30	4	34	0	0	0	0	0	0	0	0	0
	TOTAL MCS	72	24	96	1	1	2	0	0	0	0	0	0
SCS	Comp. Sci.	54	9	63	0	0	0	1	1	2	0	0	0
	LTI	4	0	4	0	0	0	0	0	0	0	0	0
	Robotics	28	7	35	0	0	0	0	0	0	0	0	0
	TOTAL SCS	86	16	102	0	0	0	1	1	2	0	0	0
HNZ	MPM	0	0	0	0	0	0	0	0	0	0	0	0
	PPM	14	1	15	1	0	1	0	0	0	0	0	0
	SPM	0	0	0	0	0	0	0	0	0	0	0	0
	TOTAL HNZ	14	1	15	1	0	1	0	0	0	0	0	0
TOTAL		447	102	549	5	3	8	11	5	16	1	0	1

CARNEGIE MELLON UNIVERSITY

DOCTORAL HEADCOUNT ENROLLMENT BY DEPARTMENT, RACE AND SEX
FALL SEMESTER 1996

College	Department	Hisp.			White			Unkn.			Total		
		M	F	T	M	F	T	M	F	T	M	F	T
CFA	Architecture	0	0	0	0	0	0	3	1	4	20	7	27
	Art	0	0	0	0	0	0	0	0	0	0	0	0
	Design	0	0	0	0	0	0	0	0	0	0	0	0
	Drama	0	0	0	0	0	0	0	0	0	0	0	0
	Music	0	0	0	0	0	0	0	0	0	0	0	0
	TOTAL CFA	0	0	0	0	0	0	3	1	4	20	7	27
CIT	Biomedical E.	0	0	0	1	1	2	2	0	2	5	2	7
	Chemical E.	0	1	1	19	6	25	10	3	13	51	13	64
	Civil E.	0	0	0	6	3	9	1	2	3	31	8	39
	E & C E.	0	0	0	19	4	23	11	1	12	111	16	127
	EPP	0	0	0	6	4	10	2	2	4	20	12	32
	Mechanical E.	0	0	0	3	2	5	5	0	5	27	3	30
	MSE	0	0	0	4	0	4	5	5	10	31	8	39
	TOTAL CIT	0	1	1	58	20	78	36	13	49	276	62	338
	GSIA		0	0	0	6	2	8	9	3	12	75	24
H&SS	English	0	0	0	8	14	22	3	6	9	13	21	34
	History	0	0	0	5	3	8	12	6	18	24	14	38
	Modern Lang.	0	0	0	0	0	0	1	1	2	1	2	3
	Philosophy	0	0	0	4	1	5	3	1	4	17	4	21
	Psychology	0	0	0	3	1	4	10	6	16	15	7	22
	S & D S.	0	0	0	6	5	11	2	0	2	13	9	22
	Statistics	0	0	0	2	0	2	4	2	6	10	3	13
	TOTAL H&SS	0	0	0	28	24	52	35	22	57	93	60	153
	MCS	Biology	0	0	0	2	1	3	12	8	20	21	17
Chemistry		0	0	0	6	1	7	12	11	23	30	23	53
Math		0	0	0	2	2	4	2	0	2	28	4	32
Physics		0	0	0	2	0	2	11	2	13	43	6	49
TOTAL MCS		0	0	0	12	4	16	37	21	58	122	50	172
SCS	Comp. Sci.	1	0	1	21	3	24	44	7	51	121	20	141
	LTI	0	0	0	0	0	0	0	0	0	4	0	4
	Robotics	1	0	1	12	2	14	15	2	17	56	11	67
	TOTAL SCS	2	0	2	33	5	38	59	9	68	181	31	212
HNZ	MPM	0	0	0	0	0	0	0	0	0	0	0	0
	PPM	0	0	0	5	4	9	4	4	8	24	9	33
	SPM	0	0	0	0	0	0	0	0	0	0	0	0
	TOTAL HNZ	0	0	0	5	4	9	4	4	8	24	9	33
TOTAL		2	1	3	142	59	201	183	73	256	791	243	1,034

CARNEGIE MELLON UNIVERSITY

UNDERGRADUATE HEADCOUNT ENROLLMENT BY DEPARTMENT, RACE AND STATUS
FALL SEMESTER 1996

College

Department	NRA		Black		A/PI		AI/AN		Hisp.		White		Unknown		Total		Total
	FT	PT	FT	PT	FT	PT	FT	PT	FT	PT	FT	PT	FT	PT	FT	PT	
*BHA	2	0	2	0	5	0	0	0	4	0	35	0	13	0	61	0	61
CFA																	
Architecture	30	0	2	0	58	0	1	0	4	0	111	0	48	0	254	0	254
Art	5	0	8	0	10	0	1	0	13	0	79	0	39	1	155	1	156
Design	6	0	4	0	20	0	0	0	6	0	83	3	34	0	153	3	156
Drama	3	0	14	0	4	0	1	0	9	0	121	4	40	0	192	4	196
Music	8	1	4	0	4	1	1	0	5	0	73	1	34	0	129	3	132
No Major Dept.	1	0	0	0	3	1	0	0	0	0	0	1	2	1	6	3	9
TOTAL CFA	53	1	32	0	99	2	4	0	37	0	467	9	197	2	889	14	903
CIT																	
Chemical E.	12	0	8	0	34	0	0	0	5	0	78	2	14	1	151	3	154
Civil E.	7	0	7	1	12	0	0	0	7	0	58	1	12	0	103	2	105
E & C E.	52	0	17	0	97	0	2	0	14	0	210	3	67	1	459	4	463
Mechanical E.	15	1	12	1	21	0	0	0	16	0	102	2	23	0	189	4	193
MSE	1	0	1	0	7	0	0	0	0	0	25	1	5	0	39	1	40
University Choice	0	0	0	0	3	0	0	0	0	0	2	0	1	0	6	0	6
No Major Dept.	40	0	20	0	81	0	0	0	21	0	190	0	51	0	403	0	403
TOTAL CIT	127	1	65	2	255	0	2	0	63	0	665	9	173	2	1,350	14	1,364
H&SS																	
Economics	11	1	1	0	11	0	0	0	2	0	16	1	9	0	50	2	52
English	0	0	4	1	8	0	2	0	6	0	78	4	32	1	130	6	136
History	0	0	8	0	3	1	0	0	3	0	32	1	7	1	53	3	56
Modern Lang.	0	0	1	0	1	0	0	0	0	0	2	1	3	2	7	3	10
Philosophy	0	0	2	0	0	0	0	0	0	0	5	0	3	0	10	0	10
Psychology	3	0	13	0	26	0	0	0	6	0	63	4	17	0	128	4	132
S & D S.	33	1	7	0	44	1	0	0	9	0	108	3	35	2	236	7	243
Statistics	0	0	0	0	0	0	0	0	0	0	2	1	2	0	4	1	5
University Choice	0	0	0	0	3	0	0	0	0	0	1	0	1	0	5	0	5
Student Def'd.	0	0	0	0	0	0	0	0	0	0	1	0	1	0	2	0	2
No Major Dept.	29	0	17	0	94	0	1	0	16	0	197	1	74	0	428	1	429
TOTAL H&SS	76	4	53	1	190	2	3	0	42	0	505	16	184	6	1,053	29	1,082
GSIA																	
Indust. Mgmt.	66	0	16	1	104	0	2	0	13	0	137	2	53	1	391	4	395
Univ. Choice	0	0	0	0	3	0	0	0	2	0	3	0	1	0	9	0	9
TOTAL GSIA	66	0	16	1	107	0	2	0	15	0	140	2	54	1	400	4	404
MCS																	
Biology	8	0	4	0	43	0	0	0	4	0	55	1	18	0	132	1	133
Chemistry	3	1	7	0	8	0	0	0	4	0	37	0	12	0	71	1	72
Math	6	0	2	0	5	0	0	0	3	0	43	2	14	0	73	2	75
Physics	3	0	1	0	2	0	0	0	0	0	39	3	12	0	57	3	60
University Choice	0	0	0	0	1	0	0	0	0	0	4	0	2	0	7	0	7
No Major Dept.	4	0	10	0	30	1	0	0	7	0	100	0	43	0	194	1	195
TOTAL MCS	24	1	24	0	89	1	0	0	18	0	278	6	101	0	534	8	542
SCS																	
Comp. Sci.	32	0	13	0	59	0	1	0	13	0	178	4	78	4	374	8	382
Math/C.S.	7	1	2	0	10	1	0	0	1	0	38	6	13	1	71	9	80
University Choice	0	0	1	0	0	0	0	0	0	0	4	0	0	0	5	0	5
TOTAL SCS	39	1	16	0	69	1	1	0	14	0	220	10	91	5	450	17	467
TOTAL	387	8	208	4	814	6	12	0	193	0	2,310	52	813	16	4,737	86	4,823

*Bachelor of Humanities & Arts is a joint program between CFA & H&SS.

CARNEGIE MELLON UNIVERSITY

MASTERS HEADCOUNT ENROLLMENT BY DEPARTMENT, RACE AND STATUS
FALL SEMESTER 1996

College

Department	NRA		Black		A/PI		AI/AN		Hisp.		White		Unknown		Total		Total
	FT	PT	FT	PT	FT	PT	FT	PT	FT	PT	FT	PT	FT	PT	FT	PT	
CFA																	
Architecture	7	0	0	0	0	0	0	0	1	0	1	0	0	0	9	0	9
Art	4	0	0	0	1	0	0	0	0	0	3	0	7	0	15	0	15
Design	0	2	0	0	0	0	0	0	1	0	3	0	6	3	10	5	15
Drama	9	2	0	0	0	0	0	0	0	0	7	1	24	5	40	8	48
Music	16	10	0	0	0	0	0	0	0	0	5	5	13	12	34	27	61
TOTAL CFA	36	14	0	0	1	0	0	0	2	0	19	6	50	20	108	40	148
CIT																	
Biomedical E.	3	0	0	0	0	0	0	0	0	0	0	1	0	0	3	1	4
Chemical E.	1	3	2	0	0	0	0	0	0	0	1	0	2	5	6	8	14
Civil E.	15	0	0	0	1	0	0	0	0	0	8	3	0	0	24	3	27
E & C E.	35	5	2	0	9	1	0	0	0	0	41	3	11	0	98	9	107
E&PP.	1	0	0	0	0	0	0	0	0	0	0	0	0	0	1	0	1
Mechanical E.	15	3	0	0	1	0	0	0	0	0	8	5	5	3	29	11	40
MSE	20	0	0	0	0	0	0	0	0	0	3	0	1	0	24	0	24
TOTAL CIT	90	11	4	0	11	1	0	0	0	0	61	12	19	8	185	32	217
GSIA																	
Indust. Admin.	225	23	3	1	32	1	2	0	1	0	111	9	94	0	468	34	502
IA (Flex-time)	0	74	0	1	0	5	0	3	0	0	0	83	0	9	0	175	175
Total GSIA	225	97	3	2	32	6	2	3	1	0	111	92	94	9	468	209	677
H&SS																	
English	5	3	0	0	4	0	0	0	2	0	27	5	6	1	44	9	53
History	0	0	0	0	0	0	0	0	0	0	0	0	0	1	0	1	1
Philosophy	5	1	0	0	0	0	0	0	0	0	0	1	5	0	10	2	12
Psychology	0	0	0	0	0	0	0	0	0	0	0	0	0	0	0	0	0
S & D S.	0	0	0	0	0	0	0	0	0	0	0	0	0	0	0	0	0
Statistics	6	0	0	0	1	0	0	0	0	0	2	1	4	0	13	1	14
TOTAL H&SS	16	4	0	0	5	0	0	0	2	0	29	7	15	2	67	13	80
INI																	
	21	1	0	0	1	0	0	0	0	0	5	1	6	0	33	2	35
MCS																	
Biology	0	0	0	0	0	0	0	0	0	0	0	0	0	0	0	0	0
Chemistry	1	0	0	0	0	0	0	0	0	0	0	0	0	1	1	1	2
Math	0	0	0	0	0	0	0	0	0	0	0	0	0	0	0	0	0
Physics	0	0	0	0	0	0	0	0	0	0	0	0	0	0	0	0	0
TOTAL MCS	1	0	0	0	0	0	0	0	0	0	0	0	0	1	1	1	2
SCS																	
Comp. Sci.	0	0	0	0	0	0	0	0	0	0	1	0	2	0	3	0	3
HCI	4	1	0	0	0	0	0	0	0	0	2	2	1	2	7	5	12
LTI	3	2	0	0	1	0	0	0	0	0	4	1	0	0	8	3	11
Robotics	0	0	0	0	0	0	0	0	0	0	0	1	0	0	0	1	1
Software Eng.	16	0	0	0	0	0	0	0	0	0	1	9	6	5	23	14	37
TOTAL SCS	23	3	0	0	1	0	0	0	0	0	8	13	9	7	41	23	64
Heinz																	
MPM	32	70	4	8	2	2	0	0	1	1	8	124	1	54	48	259	307
PPM	52	0	31	0	17	0	0	0	13	0	94	1	6	0	213	1	214
SPM	0	7	0	2	0	1	0	0	0	0	0	14	0	7	0	31	31
TOTAL HEINZ	84	77	35	10	19	3	0	0	14	1	102	139	7	61	261	291	552
TOTAL	496	207	42	12	70	10	2	3	19	1	335	270	200	108	1,164	611	1,775

CARNEGIE MELLON UNIVERSITY

DOCTORAL HEADCOUNT ENROLLMENT BY DEPARTMENT, RACE AND STATUS
FALL SEMESTER 1996

College

Department	NRA		Black		A/PI		AI/AN		Hisp.		White		Unknown		Total		Total
	FT	PT	FT	PT	FT	PT	FT	PT	FT	PT	FT	PT	FT	PT	FT	PT	
CFA																	
Architecture	23	0	0	0	0	0	0	0	0	0	0	0	4	0	27	0	27
Art	0	0	0	0	0	0	0	0	0	0	0	0	0	0	0	0	0
Design	0	0	0	0	0	0	0	0	0	0	0	0	0	0	0	0	0
Drama	0	0	0	0	0	0	0	0	0	0	0	0	0	0	0	0	0
Music	0	0	0	0	0	0	0	0	0	0	0	0	0	0	0	0	0
TOTAL CFA	23	0	0	0	0	0	0	0	0	0	0	0	4	0	27	0	27
CIT																	
Biomedical E.	3	0	0	0	0	0	0	0	0	0	2	0	2	0	7	0	7
Chemical E.	21	1	0	0	3	0	0	0	1	0	24	1	13	0	62	2	64
Civil E.	24	2	0	0	1	0	0	0	0	0	7	2	2	1	34	5	39
E & C E.	79	7	2	0	4	0	0	0	0	0	21	2	10	2	116	11	127
E&PP.	15	2	0	0	0	0	1	0	0	0	8	2	4	0	28	4	32
Mechanical E.	16	2	0	0	2	0	0	0	0	0	5	0	3	2	26	4	30
MSE	23	2	0	0	0	0	0	0	0	0	3	1	10	0	36	3	39
TOTAL CIT	181	16	2	0	10	0	1	0	1	0	70	8	44	5	309	29	338
GSIA	76	1	1	0	1	0	0	0	0	0	8	0	12	0	98	1	99
H&SS																	
English	0	2	0	0	0	1	0	0	0	0	11	11	2	7	13	21	34
History	5	5	0	2	0	0	0	0	0	0	0	8	6	12	11	27	38
Mod. Lang.	0	1	0	0	0	0	0	0	0	0	0	0	2	0	2	1	3
Philosophy	7	4	0	0	0	1	0	0	0	0	3	2	4	0	14	7	21
Psychology	2	0	0	0	0	0	0	0	0	0	4	0	14	2	20	2	22
S & D S.	5	3	0	0	1	0	0	0	0	0	8	3	2	0	16	6	22
Statistics	4	1	0	0	0	0	0	0	0	0	2	0	4	2	10	3	13
TOTAL H&SS	23	16	0	2	1	2	0	0	0	0	28	24	34	23	86	67	153
MCS																	
Biology	14	0	1	0	0	0	0	0	0	0	3	0	20	0	38	0	38
Chemistry	22	0	1	0	0	0	0	0	0	0	7	0	22	1	52	1	53
Math	26	0	0	0	0	0	0	0	0	0	4	0	2	0	32	0	32
Physics	34	0	0	0	0	0	0	0	0	0	2	0	13	0	49	0	49
TOTAL MCS	96	0	2	0	0	0	0	0	0	0	16	0	57	1	171	1	172
SCS																	
Comp. Sci.	59	4	0	0	2	0	0	0	1	0	23	1	43	8	128	13	141
LTI	4	0	0	0	0	0	0	0	0	0	0	0	0	0	4	0	4
Robotics	35	0	0	0	0	0	0	0	0	1	14	0	17	0	66	1	67
TOTAL SCS	98	4	0	0	2	0	0	0	1	1	37	1	60	8	198	14	212
Heinz	15	0	1	0	0	0	0	0	0	0	9	0	8	0	33	0	33
TOTAL	512	37	6	2	14	2	1	0	2	1	168	33	219	37	922	112	1,034

CARNEGIE MELLON UNIVERSITY

UNDERGRADUATE HEADCOUNT ENROLLMENT BY SECOND MAJOR DEPARTMENT, CLASS AND SEX
FALL SEMESTER 1996

College	Department	Freshmen		Sophomores		Juniors		Seniors		5th Year Seniors		Total		
		M	F	M	F	M	F	M	F	M	F	M	F	Total
	*BHA	0	0	0	0	0	0	0	0	0	0	0	0	0
CFA	Architecture	0	0	0	0	0	0	0	0	0	0	0	0	0
	Art	0	0	0	0	0	0	0	0	0	0	0	0	0
	Design	0	0	0	0	0	0	0	0	0	0	0	0	0
	Drama	0	0	0	0	0	0	0	0	0	0	0	0	0
	Music	0	0	0	0	0	0	0	0	0	0	0	0	0
	TOTAL CFA	0	0	0	0	0	0	0	0	0	0	0	0	0
CIT	Biomedical E.	0	0	1	0	0	0	0	0	0	0	1	0	1
	Chemical E.	0	0	0	1	0	0	0	0	0	0	0	1	1
	Civil E.	0	0	0	0	0	0	0	0	0	0	0	0	0
	E & C E.	0	0	1	0	0	0	0	0	0	0	1	0	1
	EPP	0	0	2	4	17	9	8	6	0	0	27	19	46
	Mechanical E.	0	0	0	0	0	0	0	0	0	0	0	0	0
	MSE	0	0	0	0	0	0	0	0	0	0	0	0	0
	TOTAL CIT	0	0	4	5	17	9	8	6	0	0	29	20	49
GSIA	Indust. Mgmt.	0	0	8	2	16	7	28	10	8	3	60	22	82
H&SS	Economics	0	0	5	1	21	6	20	8	3	1	49	16	65
	English	0	0	4	8	12	9	6	11	1	1	23	29	52
	History	0	1	13	4	8	8	12	6	1	0	34	19	53
	Modern Lang.	0	0	2	2	1	8	7	13	0	1	10	24	34
	Philosophy	0	0	6	1	6	1	4	2	1	0	17	4	21
	Psychology	0	0	2	3	8	1	8	4	3	0	21	8	29
	S & D S.	0	0	4	3	13	8	9	1	1	0	27	12	39
	Statistics	0	0	0	0	0	0	1	3	0	0	1	3	4
	Student Def'd.	0	0	0	0	0	0	0	2	0	0	0	2	2
	TOTAL H&SS	0	1	36	22	69	41	67	50	10	3	182	117	299
MCS	Biology	0	0	2	3	1	8	5	5	2	0	10	16	26
	Chemistry	0	0	0	0	5	0	2	3	0	0	7	3	10
	Math	0	0	2	0	7	1	1	0	3	1	13	2	15
	Physics	0	0	1	0	4	0	2	0	0	0	7	0	7
	TOTAL MCS	0	0	5	3	17	9	10	8	5	1	37	21	58
SCS	Comp. Sci.	0	0	1	0	5	0	12	1	1	0	19	1	20
	Math/C.S.	0	0	0	0	0	0	6	0	1	0	7	0	7
	TOTAL SCS	0	0	1	0	5	0	18	1	2	0	26	1	27
HNZ		0	0	0	0	0	0	0	0	0	0	0	0	0
TOTAL		0	1	54	32	124	66	131	75	25	7	334	181	515

CARNEGIE MELLON UNIVERSITY

DISTRIBUTION OF STUDENTS BY HOUSING TYPE, LEVEL AND SEX
FALL SEMESTER 1996

	<u>Carnegie Mellon Housing</u>			<u>Fraternity & Sorority*</u>	<u>Non-CMU Housing</u>	<u>TOTAL</u>
	<u>On-Campus</u>	<u>Off-Campus</u>	<u>Total</u>			
Undergraduate						
Freshman**						
Male	743	163	906	0	35	941
Female	420	47	467	0	21	488
TOTAL	1,163	210	1,373	0	56	1,429
Sophomore						
Male	414	91	505	70	252	827
Female	217	33	250	12	104	366
TOTAL	631	124	755	82	356	1,193
Junior						
Male	258	57	315	101	263	679
Female	101	39	140	18	170	328
TOTAL	359	96	455	119	433	1,007
Senior						
Male	176	68	244	169	409	822
Female	69	32	101	50	221	372
TOTAL	245	100	345	219	630	1,194
Undergraduate						
Male	1,591	379	1,970	340	959	3,269
Female	807	151	958	80	516	1,554
TOTAL	2,398	530	2,928	420	1,475	4,823
Graduate						
Male	0	0	0	0	1,977	1,977
Female	0	0	0	0	832	832
TOTAL	0	0	0	0	2,809	2,809
Non-Degree						
Male	0	0	0	0	61	61
Female	0	0	0	0	65	65
TOTAL	0	0	0	0	126	126
TOTAL						
Male	1,591	379	1,970	340	2,997	5,307
Female	807	151	958	80	1,413	2,451
TOTAL	2,398	530	2,928	420	4,410	7,758

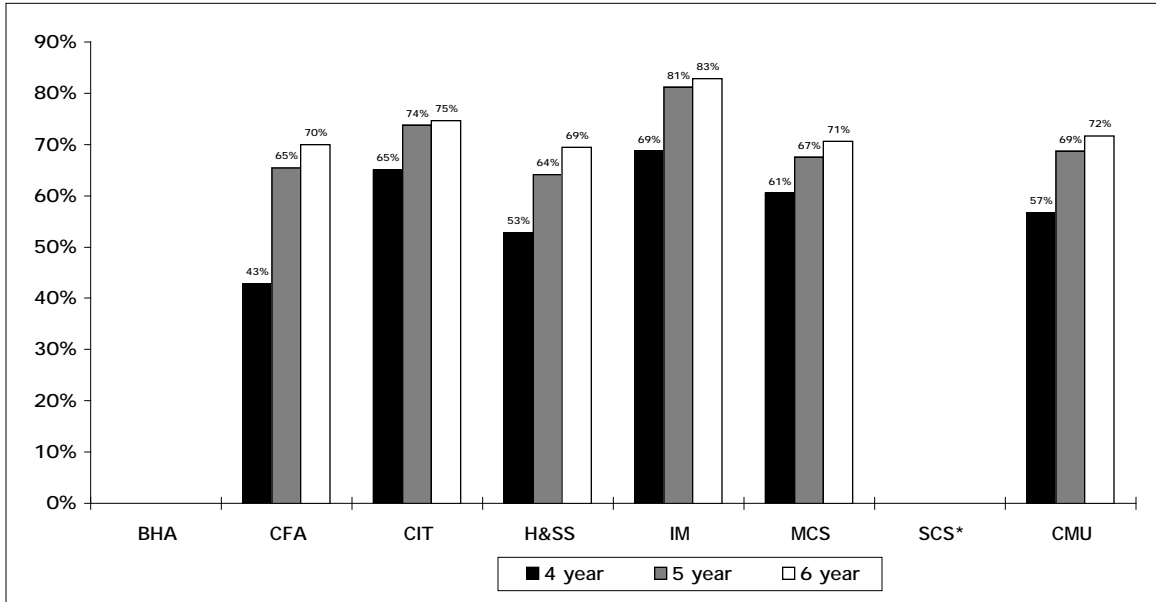
* Count for fraternities and sororities is an estimate.

** Includes first-time and transfer freshmen.

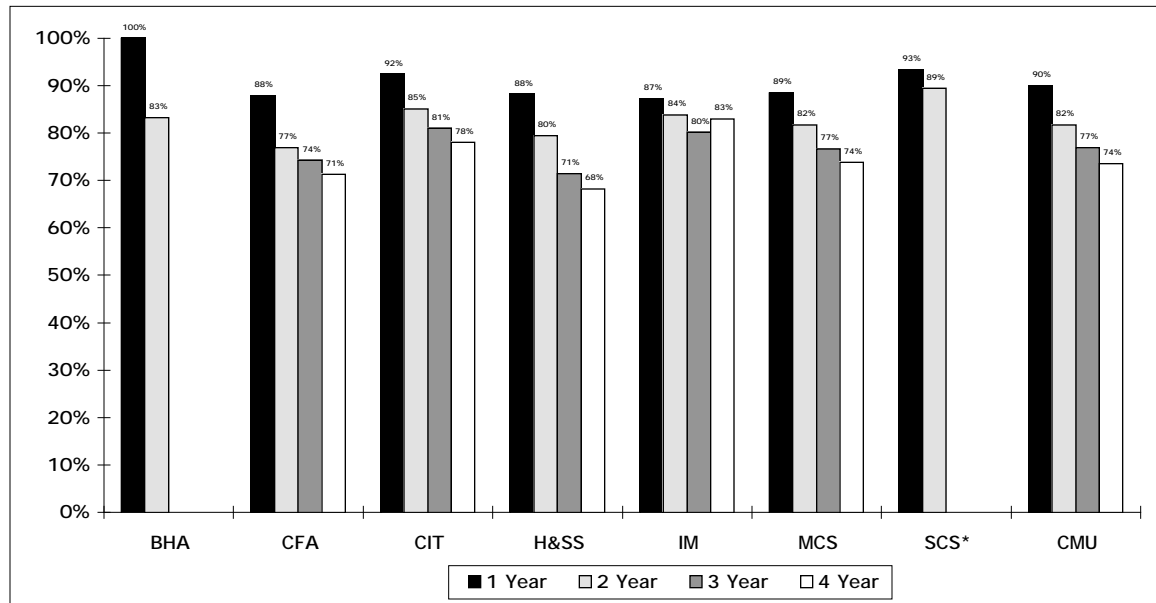
CARNEGIE MELLON UNIVERSITY

GRADUATION AND PERSISTENCE RATES BY COLLEGE AND FOR CMU
FALL SEMESTER 1996

AVERAGE WITHIN-UNIVERSITY GRADUATION RATE BY COLLEGE AND FOR CMU



AVERAGE WITHIN-UNIVERSITY PERSISTENCE RATE** BY COLLEGE AND FOR CMU



* Prior to the 1994-95 school year, computer science students enrolled in MCS for their freshman year and later matriculated into SCS.

** Persistence is the sum of those enrolled and those who have graduated. Within university rates show the college in which the student originally enrolled, although the student may have since transferred internally to another college. Bars for persistence rates represent an average of the three most recent rates available, drawn from the entering classes of 1990-1995.

CARNEGIE MELLON UNIVERSITY

TOTAL DEGREES GRANTED BY DEPARTMENT AND LEVEL
ACADEMIC YEAR 1995-96

College		<u>Bachelors</u>	<u>Masters</u>	<u>Doctorates</u>	<u>TOTAL</u>
	Department				
	*BHA	9	0	0	9
CFA	Architecture	47	8	1	56
	Art	45	4	0	49
	Design	44	5	0	49
	Drama	38	31	0	69
	Music	18	25	0	43
	TOTAL CFA	192	73	1	266
CIT	Biomed. E.	0	0	0	0
	Chemical E.	58	11	18	87
	Civil E.	42	14	11	67
	E & C E.	122	61	36	219
	E. & P P	0	2	4	6
	Mechanical E.	70	18	5	93
	MSE	19	13	7	39
	TOTAL CIT	311	119	81	511
GSIA	Indust. Admin.	0	266	12	278
	Indust. Mgmt.	109	0	0	109
	TOTAL GSIA	109	266	12	387
H&SS	Economics	29	0	0	29
	English	40	34	5	79
	History	26	4	9	39
	Modern Lang.	3	0	0	3
	Philosophy	5	17	1	23
	Psychology	30	3	6	39
	S & D S.	64	5	2	71
	Statistics	1	17	6	24
	Student Defined	2	0	0	2
	TOTAL H&SS	200	80	29	309
INI		0	30	0	30
MCS	Biology	35	0	9	44
	Chemistry	22	4	8	34
	Math	22	4	3	29
	Physics	20	10	12	42
	TOTAL MCS	99	18	32	149
SCS	Comp. Sci.	62	12	21	95
	Math/C.S.	19	0	0	19
	Robotics	0	5	12	17
	Software Eng.	0	11	0	11
	TOTAL SCS	81	28	33	142
HNZ	MPM	0	120	0	120
	PPM	0	62	5	67
	TOTAL HEINZ	0	182	5	187
	TOTAL	1,001	796	193	1,990

*Bachelor of Humanities & Arts is a joint program between CFA & H&

CARNEGIE MELLON UNIVERSITY

TOTAL DEGREES GRANTED BY LEVEL, RACE AND SEX
ACADEMIC YEAR 1995-96

	<u>Bachelors</u>	<u>Masters</u>	<u>Doctorates</u>	<u>TOTAL</u>
Nonresident Alien				
Men	67	177	8	252
Women	29	49	55	133
Total	96	226	63	385
Black, Non-Hispanic				
Men	12	10	1	23
Women	10	7	1	18
Total	22	17	2	41
American Indian/Alaskan Native				
Men	0	2	0	2
Women	0	1	0	1
Total	0	3	0	3
Asian/Pacific Islander				
Men	113	46	8	167
Women	59	15	3	77
Total	172	61	11	244
Hispanic				
Men	9	9	1	19
Women	8	5	1	14
Total	17	14	2	33
White, Non-Hispanic				
Men	372	178	47	597
Women	179	103	19	301
Total	551	281	66	898
Race Unknown or Other				
Men	92	113	40	245
Women	51	81	9	141
Total	143	194	49	386
Total				
Men	665	535	105	1,305
Women	336	261	88	685
Total	1,001	796	193	1,990

CARNEGIE MELLON UNIVERSITY

TOTAL DEGREES GRANTED BY DEPARTMENT AND LEVEL
ACADEMIC YEARS 1991-92 to 1995-96

College	Degrees	1991-92	1992-93	1993-94	1994-95	1995-96
*BHA	Bachelors	N/A	N/A	N/A	2	9
	Masters	N/A	N/A	N/A	0	0
	Doctorates	N/A	N/A	N/A	0	0
	TOTAL BHA	N/A	N/A	N/A	2	9
CFA	Bachelors	202	202	168	187	192
	Masters	59	56	72	70	73
	Doctorates	4	1	2	1	1
	TOTAL CFA	265	259	242	258	266
CIT	Bachelors	230	261	307	280	311
	Masters	127	144	108	128	119
	Doctorates	71	68	81	82	81
	TOTAL CIT	428	473	496	490	511
GSIA	Bachelors	102	136	105	119	109
	Masters	251	281	253	284	266
	Doctorates	11	12	15	20	12
	TOTAL GSIA	364	429	373	423	387
H&SS	Bachelors	168	166	161	169	200
	Masters	69	61	66	67	80
	Doctorates	11	19	29	22	29
	TOTAL H&SS	248	246	256	258	309
INI	Bachelors	N/A	N/A	N/A	0	0
	Masters	N/A	N/A	N/A	33	30
	Doctorates	N/A	N/A	N/A	0	0
	TOTAL BHA	N/A	N/A	N/A	33	30
MCS	Bachelors	170	177	167	111	99
	Masters	27	19	25	36	18
	Doctorates	23	28	23	34	32
	TOTAL MCS	220	224	215	181	149
SCS	Bachelors	25	25	30	88	81
	Masters	60	85	69	35	28
	Doctorates	24	24	16	17	33
	TOTAL SCS	109	134	115	140	142
HNZ	Masters	150	196	158	218	182
	Doctorates	3	3	1	4	5
	TOTAL HNZ	153	199	159	222	187
CMU	Bachelors	897	967	938	954	1,001
	Masters	743	842	751	838	796
	Doctorates	147	155	167	180	193
	TOTAL	1,787	1,964	1,856	2,007	1,990

*Bachelor of Humanities & Arts is a joint program between CFA & H&SS.

TEACHING AND ACADEMIC SUPPORT

CARNEGIE MELLON UNIVERSITY

UNITS TAUGHT, BY DEPARTMENT, SEMESTER AND LEVEL*
ACADEMIC YEAR 1995-96

College	Department	Fall Semester				Spring Semester				YEAR TOTAL
		Underg	Grad	Other	Total	Underg	Grad	Other	Total	
CFA	Architecture	9,495	489	18	10,002	9,606	315	9	9,930	19,932
	Art	6,632	687	89	7,408	5,896	845	40	6,781	14,189
	Design	6,591	785	93	7,469	5,288	1,032	51	6,371	13,840
	Drama	9,123	3,043	14	12,180	9,046	2,741	4	11,791	23,971
	Music	7,404	2,041	48	9,493	7,325	1,911	12	9,248	18,741
	Interdiscp.	777	30	9	816	843	45	0	888	1,704
	TOTAL CFA	40,022	7,075	271	47,368	38,004	6,889	116	45,009	92,377
CIT	Biomedical E.	663	315	27	1,005	807	360	27	1,194	2,199
	Chemical E.	4,749	2,838	48	7,635	3,367	2,591	63	6,021	13,656
	Civil E.	3,841	2,350	87	6,278	3,040	2,052	54	5,146	11,424
	E & C E.	10,926	10,034	120	21,080	10,706	9,296	78	20,080	41,160
	EPP	1,002	1,306	12	2,320	1,467	1,080	0	2,547	4,867
	Mechanical E.	6,549	2,658	24	9,231	5,685	2,350	0	8,035	17,266
	MSE	1,986	2,621	48	4,655	1,707	2,705	33	4,445	9,100
	Interdiscp.	918	160	0	1,078	981	101	0	1,082	2,160
TOTAL CIT	30,634	22,282	366	53,282	27,760	20,535	255	48,550	101,832	
GSIA	Economics	8,082	9	18	8,109	8,793	18	27	8,838	16,947
	IM	12,475	9	45	12,529	14,497	81	27	14,605	27,134
	GSIA	102	33,437	132	33,671	60	30,618	222	30,900	64,571
	TOTAL GSIA	20,659	33,455	195	54,309	23,350	30,717	276	54,343	108,652
H&SS	English	12,531	2,119	135	14,785	12,294	1,586	144	14,024	28,809
	History	10,872	615	93	11,580	10,839	610	84	11,533	23,113
	Mod. Lang.	7,584	348	252	8,184	6,555	285	177	7,017	15,201
	Philosophy	5,331	1,084	87	6,502	4,461	1,239	105	5,805	12,307
	Psychology	6,645	862	117	7,624	8,601	905	126	9,632	17,256
	S & D S.	7,581	556	93	8,230	5,097	478	0	5,575	13,805
	Statistics	6,705	2,144	48	8,897	5,769	1,449	90	7,308	16,205
	Interdiscp.	434	0	0	434	342	0	0	342	776
TOTAL H&SS	57,683	7,728	825	66,236	53,958	6,552	726	61,236	127,472	
MCS	Biology	5,263	1,656	27	6,946	4,493	1,608	54	6,155	13,101
	Chemistry	9,703	2,046	53	11,802	7,248	1,813	44	9,105	20,907
	Math	20,653	1,334	160	22,147	17,239	1,450	100	18,789	40,936
	Physics	10,303	2,059	216	12,578	10,197	2,081	79	12,357	24,935
	Interdiscp.	105	0	0	105	0	0	0	0	105
TOTAL MCS	46,027	7,095	456	53,578	39,177	6,952	277	46,406	99,984	
SCS	Comput. Sci.	13,588	9,845	276	23,709	16,002	9,655	487	26,144	49,853
	Robotics	12	2,568	21	2,601	24	3,273	45	3,342	5,943
	SEI	18	654	21	693	6	442	0	448	1,141
	TOTAL SCS	13,618	13,067	318	27,003	16,032	13,370	532	29,934	56,937
HNZ		546	16,862	267	17,675	780	16,827	198	17,805	35,480
	OTHER	6,153	178	183	6,514	6,520	180	210	6,910	13,424
TOTAL		215,342	107,742	2,881	325,965	205,581	102,022	2,590	310,193	636,158

*Please see units definition in appendix III

CARNEGIE MELLON UNIVERSITY

UNITS TAUGHT BY COLLEGE AND LEVEL ACADEMIC YEARS 1991-92 to 1995-96

College	Level	1991-92	1992-93	1993-94	1994-95	1995-96
CFA	Undergraduate	83,344	79,137	78,402	77,592	78,026
	Graduate	7,319	7,756	10,369	14,178	13,964
	Other	432	408	514	468	387
	TOTAL CFA	91,095	87,301	89,285	92,238	92,377
CIT	Undergraduate	58,099	61,206	61,967	58,998	58,394
	Graduate	46,698	44,313	45,752	41,449	42,817
	Other	771	375	921	630	621
	TOTAL CIT	105,568	105,894	108,640	101,077	101,832
GSIA	Undergraduate	39,727	38,653	40,530	40,798	44,009
	Graduate	57,581	57,534	57,706	59,719	64,172
	Other	582	603	621	552	471
	TOTAL GSIA	97,890	96,790	98,857	101,069	108,652
H&SS	Undergraduate	96,234	96,265	101,153	103,337	111,641
	Graduate	14,610	15,522	15,094	15,446	14,280
	Other	1,752	1,608	1,883	1,137	1,551
	TOTAL H&SS	112,596	113,395	118,130	119,920	127,472
MCS	Undergraduate	82,985	82,994	85,950	85,246	85,204
	Graduate	15,487	16,466	16,183	15,600	14,047
	Other	559	461	634	221	733
	TOTAL MCS	99,031	99,921	102,767	101,067	99,984
SCS	Undergraduate	21,825	23,444	25,008	27,672	29,650
	Graduate	20,009	20,007	21,958	23,497	26,437
	Other	788	799	537	578	850
	TOTAL SCS	42,622	44,250	47,503	51,747	56,937
HNZ	Undergraduate	480	942	186	828	1,326
	Graduate	34,646	31,447	33,165	31,017	33,689
	Other	186	333	384	264	465
	TOTAL HNZ	35,312	32,722	33,735	32,109	35,480
OTHER	Undergraduate	10,211	10,756	11,840	9,789	12,673
	Graduate	630	522	1,455	404	358
	Other	661	474	185	534	393
	TOTAL OTHER	11,502	11,752	13,480	10,727	13,424
CMU	Undergraduate	392,905	393,397	405,036	404,260	420,923
	Graduate	196,980	193,567	201,682	201,310	208,516
	Other	5,731	5,061	5,679	4,384	5,444
TOTAL		595,616	592,025	612,397	609,954	636,158

Other = ROTC, Physical Education and International Education

CARNEGIE MELLON UNIVERSITY

COMPUTING SERVICES STATISTICS
FISCAL YEARS 1993 THRU 1996

Change in Network Connections	Total 1993	Total 1994	Total 1995	Total 1996
Token Ring	1,012	1,138	703	594
Local Talk	2,623	2,761	2,051	2,167
Ethernet	2,084	3,084	4,436	6,905
Total Network Connections	5,719	6,983	7,190	9,666
Total Asynchronous Connections	N/A	573	324	9
TOTAL	5,719	7,556	7,514	9,675

Andrew Usage	1993	1994	1995	1996
Number of Andrew systems IDs	10,864	12,876	18,014	21,178
Number of active Andrew user*	9,300	9,600	10,370	11,443
Average weekly UNIX server logins*	20,000	29,000	30,424	45,204
Average weekly UNIX unique user IDs*	2,500	3,300	3,417	6,304
Average number of connected workstations*	1,300	1,000	831	850
Peak number of connected workstations*	1,900	1,100	967	931
Weekly unique users of MacMail	5,000	3,200	N/A	N/A
Weekly unique users of EzMail	1,300	N/A	N/A	N/A
Weekly number unique Macintosh connections	2,500	700	N/A	N/A
Average total weekly PC-Mac unique users	N/A	N/A	7,683	8,675
Average total weekly PC-Mac server sessions	65,009	74,000	140,781	179,334
Peak Unique Cyrus Mail Users	N/A	N/A	N/A	1,245
Average Unique Weekly Cyrus Mail Users	N/A	N/A	N/A	717

Andrew usage notes

Cyrus was a pilot during academic year 1995-96. Usage data is from first day of classes in the fall through the end of December

Computer Store Purchases (CPUs)	1993	1994	1995	1996
Students	599	634	575	205
Faculty	83	68	60	27
Staff	153	162	140	39
Departments	818	867	909	742
Others	0	0	9	0
TOTAL	1,653	1,731	1,693	1,013

Computers in Public Clusters	1993	1994	1995	1996
<u>Workstations</u>				
SGI Indy Modelers	0	0	0	10
HP712/100's	0	0	0	25
Sun Ultra 140's	0	0	0	38
SunSparc5/85's	0	33	33	33
DECstation 5000	20	20	20	20
DECstation 3100	104	75	74	0
NeXt	11	0	0	0
IBM RT	0	0	0	0
<u>Macintosh</u>				
PowerMac 7200	0	0	0	105
PowerMac 7100	0	50	161	61
Mac Ilcs	0	18	0	0
Mac Ilci	0	85	54	0
Mac LC III	0	20	20	0
Mac II	179	8	0	0
Macintosh Plus & SE	8	0	0	0
<u>Windows</u>				
Dell Optiplex GX Pro	0	0	0	25
Dell Optiplex 5133 GXM	0	0	0	25
Dell Pentium	0	0	22	20
DEC 486	0	22	13	3
IBM PS/2	23	12	0	0
IBM PC	0	0	0	0
TOTAL	345	343	397	365

* Denotes estimates for the academic year

CARNEGIE MELLON UNIVERSITY

LIBRARY COLLECTIONS AND UTILIZATION
FISCAL YEARS 1994 THRU 1996

Library Collections	<u>1994</u>	<u>1995</u>	<u>1996</u>
Total Print Volumes (Books, Bound Journals, etc.)	852,241	873,540	889,252
Current Subscriptions--Periodicals, Newspapers, Gov. Documents	3,889	3,561	3,797
Microforms--Books, Serial Titles, Government Documents	756,985	809,527	838,676
Graphic Materials--Art Reproductions (Mounted and Unmounted), Slides*	134,027	137,110	138,381
Audio Materials--Cassettes, Phonograph Records, Compact Discs, Tapes	21,340	21,717	21,855
Video Materials	4,248	4,549	4,992
Computer Files	1,659	1,915	2,478
Music Scores	22,267	21,853	21,772
Maps	157	157	157
*number of volumes/units			
Library Material Duplication			
Photocopies Made in Libraries	1,906,416	1,956,305	1,731,231
Microform Copies Made in Libraries	53,814	46,909	41,842
Number of Visits to the Libraries			
Engineering and Science Library	231,451	210,619	184,008
Hunt Library	853,335	788,324	694,635
Mellon Institute Library	9,483	9,470	9,902
Circulation of Library Materials	149,161	137,569	143,781
Books Used in Libraries	115,407	104,565	85,096
Resource Sharing and Document Delivery			
Interlibrary Loan			
Items Borrowed	5,123	4,792	5,463
Items Loaned	5,667	5,927	5,970
Oakland Library Consortium			
Items Borrowed	2,424	2,766	2,584
Items Loaned	693	607	618
Current Awareness Service*			
Number of Subscriptions	1,438	861	*
Distinct titles Requested	828	612	*
Individuals Using	76	57	*
Departments Represented	32	27	*
Electronic Current Awareness Services (Reveal Alert from CARL)			
Individuals using cite license subscription	N/A	N/A	82
Journal Article Delivery Service (JADS)			
Articles Delivered	306	301	145
Electronic Journal Article Delivery Service (E-JADS)			
Articles Delivered	2,116	1,874	1,334

* electronic service replaced the paper-based Current Awareness Service in January 1996

CARNEGIE MELLON UNIVERSITY

LIBRARY COLLECTIONS AND UTILIZATION
FISCAL YEARS 1994 THRU 1996

Library Collections	<u>1994</u>	<u>1995</u>	<u>1996</u>
Total Print Volumes (Books, Bound Journals, etc.)	852,241	873,540	889,252
Current Subscriptions--Periodicals, Newspapers, Gov. Documents	3,889	3,561	3,797
Microforms--Books, Serial Titles, Government Documents	756,985	809,527	838,676
Graphic Materials--Art Reproductions (Mounted and Unmounted), Slides*	134,027	137,110	138,381
Audio Materials--Cassettes, Phonograph Records, Compact Discs, Tapes	21,340	21,717	21,855
Video Materials	4,248	4,549	4,992
Computer Files	1,659	1,915	2,478
Music Scores	22,267	21,853	21,772
Maps	157	157	157
*number of volumes/units			
Library Material Duplication			
Photocopies Made in Libraries	1,906,416	1,956,305	1,731,231
Microform Copies Made in Libraries	53,814	46,909	41,842
Number of Visits to the Libraries			
Engineering and Science Library	231,451	210,619	184,008
Hunt Library	853,335	788,324	694,635
Mellon Institute Library	9,483	9,470	9,902
Circulation of Library Materials	149,161	137,569	143,781
Books Used in Libraries	115,407	104,565	85,096
Resource Sharing and Document Delivery			
Interlibrary Loan			
Items Borrowed	5,123	4,792	5,463
Items Loaned	5,667	5,927	5,970
Oakland Library Consortium			
Items Borrowed	2,424	2,766	2,584
Items Loaned	693	607	618
Current Awareness Service*			
Number of Subscriptions	1,438	861	*
Distinct titles Requested	828	612	*
Individuals Using	76	57	*
Departments Represented	32	27	*
Electronic Current Awareness Services (Reveal Alert from CARL)			
Individuals using cite license subscription	N/A	N/A	82
Journal Article Delivery Service (JADS)			
Articles Delivered	306	301	145
Electronic Journal Article Delivery Service (E-JADS)			
Articles Delivered	2,116	1,874	1,334

* electronic service replaced the paper-based Current Awareness Service in January 1996

CARNEGIE MELLON UNIVERSITY

INSTRUCTIONAL TECHNOLOGY STATISTICS
FISCAL YEARS 1992 THROUGH 1996

Equipment for Delivery

	<u>Total 1992</u>	<u>Total 1993</u>	<u>Total 1994</u>	<u>Total 1995</u>	<u>Total 1996</u>
Video/Data Projectors	9	9	10	10	6
VCRs	14	12	12	12	5
Video/Data Monitors	10	8	10	10	5
Slide Projectors	18	18	18	18	18
Tape Players	23	28	32	32	10
Sound Systems	9	9	9	9	9
Overhead Projectors	14	17	9	9	5
Videodisc Players	3	3	2	2	4
Personal Computers	8	8	9	5	5
TOTAL	108	112	111	107	67

Classrooms (level of installed equipment)

	<u>1992</u>	<u>1993</u>	<u>1994</u>	<u>1995</u>	<u>1996</u>
Overhead Projector	54	83	83	82	82
Video Viewing	28	35	38	53	82
Data Viewing	9	10	11	17	19

Video Viewing Cluster

	<u>1992</u>	<u>1993</u>	<u>1994</u>	<u>1995</u>	<u>1996</u>
VCR carrels	13	14	19	21	21
Videodisc/VCR carrels	8	9	11	11	11
Interactive carrels	2	2	3	3	3
CD ROM Carrels	0	0	0	2	2
Photo CD Carrels	0	0	0	1	1
Videotapes viewed in carrels	16,379	17,146	13,205	10,305	9,167
Videotapes previewed by Faculty	588	730	712	921	1,038
Videotapes used in class	567	924	1,050	1,133	1,280
TOTAL	17,534	18,800	14,967	12,359	12,485

Student Video Editing Cluster

	<u>1992</u>	<u>1993</u>	<u>1994</u>	<u>1995</u>	<u>1996</u>
S-VHS stations	2	2	2	2	2
VHS stations	2	2	0	0	0
Hi-8 stations	1	2	0	1	1
Circulating VHS camcorders	15	16	14	14	14
Circulating Hi-8 camcorders	5	5	4	4	4

CARNEGIE MELLON UNIVERSITY

TEACHING AND ACADEMIC SUPPORT. ADDITIONAL FACTS AND FIGURES

Pittsburgh Council of Higher Education (PCHE) Units Taken by CMU Students, by Level & College
 Units Taught by College
 Academic Year 1995-96

Major/College	Units Taken by CMU Students			Units Taught By CMU
	Undergraduate	Graduate	Total	Total
BHA	54	0	54	0
CFA	471	45	516	70
CIT	306	96	402	213
GSIA	0	124	124	126
H&SS	888	309	1,197	441
IM	168	0	312	0
MCS	312	75	153	332
SCS	78	60	138	108
HNZ	0	258	258	459
OTHER	0	0	0	315
TOTAL	2,277	967	3,244	2,064

Pittsburgh Council of Higher Education (PCHE) Colleges:

Allegheny Community College	Duquesne University	Point Park College
Carlow College	La Roche College	Robert Morris College
Chatham College	Pittsburgh Theological Seminary	University of Pittsburgh

The University Teaching Center (UTC)

- Established in January 1982, the University Teaching Center identifies, organizes and conducts programs to improve the quality of instruction at CMU.
- Incoming Faculty Orientation.
 "Surviving, Enjoying and Flourishing at Carnegie Mellon" is a three day faculty orientation that focuses on teaching effectively and on balancing the diverse roles of faculty life.
- Faculty Luncheon Seminars
 Each semester the UTC offers a series of Luncheon Seminars to all members of the faculty. These seminars provide a forum for faculty to discuss issues about learning and teaching which transcend disciplinary boundaries.
- Feedback Mechanisms for Faculty: The Consultation Process
 For faculty members interested in improving a course, the Teaching Center staff collects data, analyzes, interprets and then translates this into recommendations for specific strategies to modify the course or classroom behavior.
- Consultations about Course Evaluations
 The Teaching Center recommends distributing early course evaluations 3-4 weeks into a semester to improve teaching and the course. They will aid faculty members in designing, interpreting and acting upon the results of those evaluations.
- Creation and Implementation of Departmental and College TA Programs
 The UTC aids departments and colleges in assessing their needs and creating TA programs to address those needs.
- Graduate Student Seminar Series
 The UTC offers modules and special topic sessions on issues surrounding teaching and learning for those TA's currently teaching or planning to teach in the future.
- Response to the Changing Needs of Departments and Colleges
 The University Teaching Center offers expertise and resources to departments and colleges to meet their changing needs.

FACULTY AND STAFF

CARNEGIE MELLON UNIVERSITY

FULL-TIME EMPLOYEES BY DIVISION AND JOB CATEGORY
FALL SEMESTER 1996

Division	Job Category								TOTAL
	Admin.	Ten./Ten. Track Faculty	Other Instr.	Resrch	Profsnl.	Sec./ Cler.	Tech./ Parap.	Other	
President	2	1.0	1.0	0	1	5	0	0	10
Provost									
CFA	11	79.5	39.5	4	4	13	18	0	169
CIT	31	108.3	8.8	81	5	50	18	6	308
CMRI	16	0.0	5.0	41	4	10	14	0	90
GSIA	35	62.1	19.9	1	16	29	2	0	165
H&SS	13	108.6	28.4	33	12	30	21	0	246
MCS	38	93.9	22.1	159	12	26	26	2	379
SCS	35	42.0	20.0	256	17	30	30	0	430
SEI	55	0.0	0.0	152	35	48	13	5	308
HNZ	15	27.5	8.5	4	4	13	4	0	76
Academic Subtotal	249	521.8	152.2	731	109	249	146	13	2,171
Provost's Office	5	1.0	0.0	0	16	2	1	1	26
Provost Subtotal	254	522.8	152.2	731	125	251	147	14	2,197
Provost Administration	17	1.0	5.0	4	6	10	1	1	45
VP Computing Services	28	0.0	1.0	26	35	14	21	0	125
VP Business Affairs	54	0.0	13.0	0	25	65	1	59	217
VP University Planning	13	0.0	0.0	0	19	1	0	0	33
Facilities Management	15	0.0	0.0	0	18	5	3	88	129
VP Development	22	0.0	1.0	0	23	13	0	0	59
VP Enrollment	24	0.0	16.0	0	10	21	1	55	127
Student Affairs	10	0.0	0.0	0	16	12	0	0	38
University Libraries	8	0.0	2.0	0	26	25	12	0	73
VP University Relations	17	0.0	1.0	0	10	9	18	0	55
Technology Transfer	3	0.0	0.0	0	2	1	0	0	6
TOTAL	467	524.8	192.2	761	316	432	204	217	3,114

Regular faculty headcount is based on contractual joint appointments per hiring department, while all other positions are based on home department.

CARNEGIE MELLON UNIVERSITY

TOTAL FACULTY BY DEPARTMENT, CATEGORY, AND STATUS
FALL SEMESTER 1996

College	Department	Tenure/ Tenure Track	Research	Lecturer	Special		Total
		Faculty	Faculty	Faculty	Faculty	Part	Faculty
CFA	Architecture	14.50	0.00	1.00	2.00	4.00	21.50
	Art	18.00	0.00	0.00	2.00	1.00	21.00
	Design	13.00	0.00	1.00	1.00	0.00	15.00
	Drama	20.00	0.00	8.00	6.00	2.00	36.00
	Music	12.00	0.00	10.00	3.00	36.00	61.00
	Ctr. for Perf. + Diag.	0.00	0.00	0.00	1.00	0.00	1.00
	SFCI	0.00	0.00	0.00	1.00	0.00	1.00
	Dean's Ofc.	2.00	0.00	0.00	0.00	1.00	3.00
	TOTAL CFA	79.50	0.00	20.00	16.00	44.00	159.50
CIT	Biomedical E.	0.00	0.00	0.00	0.00	2.00	2.00
	Chemical E.	14.50	0.00	0.00	10.00	0.00	24.50
	Civil E.	15.50	0.00	1.00	1.00	0.00	17.50
	E & C E.	33.00	5.00	0.00	12.00	0.00	50.00
	EPP	8.15	4.00	0.00	4.00	0.00	16.15
	Mechanical E.	19.10	0.00	0.00	2.00	1.00	22.10
	MSE	16.50	1.00	0.00	0.00	1.00	18.50
	EDRC	0.00	3.00	0.00	3.00	0.00	6.00
	Dean's Ofc.	1.50	0.00	0.00	0.00	0.00	1.50
	TOTAL CIT	108.25	13.00	1.00	32.00	4.00	158.25
GSIA	GSIA	60.08	0.00	0.00	20.00	13.00	93.08
	Dean's Office	2.00	0.00	0.00	0.00	0.00	2.00
	TOTAL GSIA	62.08	0.00	0.00	20.00	13.00	95.08
H&SS	English	24.00	0.00	1.00	1.00	2.00	28.00
	History	18.75	0.00	0.00	1.00	1.00	20.75
	Mod. Lang.	7.00	0.00	8.00	2.00	11.00	28.00
	Philosophy	9.00	2.00	3.00	1.00	0.00	15.00
	Psychology	23.00	0.00	0.00	17.00	30.00	70.00
	S & D S.	11.83	0.00	2.00	2.00	0.00	15.83
	Statistics	14.00	2.00	0.00	3.00	1.00	20.00
	CAAE	0.00	0.00	0.00	0.00	1.00	1.00
	CNBC	0.00	1.00	0.00	2.00	0.00	3.00
	Dean's Ofc.	1.00	0.00	0.00	1.00	0.00	2.00
	TOTAL H&SS	108.58	5.00	14.00	30.00	46.00	203.58
INI		0.00	0.00	0.00	1.00	0.00	1.00
MCS	Biology	18.00	0.00	1.00	32.00	1.00	52.00
	Chemistry	18.00	2.00	1.00	9.00	0.00	30.00
	Math	22.00	0.00	3.00	1.00	0.00	26.00
	Physics	33.90	1.00	1.00	18.00	0.00	53.90
	NMR Ctr.	0.00	0.00	0.00	1.00	0.00	1.00
	STC	0.00	0.92	0.00	8.00	0.00	8.92
	Dean's Ofc.	2.00	0.00	0.00	2.08	0.00	4.08
	TOTAL MCS	93.90	3.92	6.00	71.08	1.00	175.90
SCS	Comp. Sci.	36.50	18.50	8.00	22.00	1.00	86.00
	HCI	2.00	3.00	0.00	2.00	0.00	7.00
	Robotics	3.00	19.75	0.00	15.00	0.00	37.75
	CMT	0.00	6.00	0.00	5.00	1.00	12.00
	ITC	0.00	0.00	0.00	2.00	0.00	2.00
	Dean's Office	0.50	0.00	0.00	0.00	0.00	0.50
	TOTAL SCS	42.00	47.25	8.00	46.00	2.00	145.25
HNZ	HNZ	26.50	2.00	2.00	5.70	2.00	38.20
	Dean's Office	1.00	0.00	0.00	0.00	0.00	1.00
	TOTAL HNZ	27.50	2.00	2.00	5.70	2.00	39.20
ACADEMIC SUBTOTAL	521.81	71.17	51.00	221.78	112.00	977.76	
ADMINISTRATIVE	3.00	1.00	0.00	36.00	1.00	41.00	
TOTAL	524.81	72.17	51.00	257.78	113.00	1018.76	

CARNEGIE MELLON UNIVERSITY

TOTAL FACULTY BY DEPARTMENT, CATEGORY, AND SEX
FALL SEMESTER 1996

College	Department	Tenure/ Tenure Track Faculty		Research Faculty		Lecturer Faculty		Special Faculty		Total Faculty		
		M	F	M	F	M	F	M	F	M	F	Total
CFA	Architecture	12.50	2.00	0.00	0.00	1.00	0.00	5.00	1.00	18.50	3.00	21.50
	Art	10.00	8.00	0.00	0.00	0.00	0.00	1.00	2.00	11.00	10.00	21.00
	Design	11.00	2.00	0.00	0.00	0.00	1.00	0.00	1.00	11.00	4.00	15.00
	Drama	12.00	8.00	0.00	0.00	6.00	2.00	5.00	3.00	23.00	13.00	36.00
	Music	7.00	5.00	0.00	0.00	6.00	4.00	27.00	12.00	40.00	21.00	61.00
	Ctr. for Perf. + Diag.	0.00	0.00	0.00	0.00	0.00	0.00	1.00	0.00	1.00	0.00	1.00
	SFCI	0.00	0.00	0.00	0.00	0.00	0.00	1.00	0.00	1.00	0.00	1.00
	Dean's Ofc.	2.00	0.00	0.00	0.00	0.00	0.00	0.00	1.00	2	1	3
	TOTAL CFA	54.50	25.00	0.00	0.00	13.00	7.00	40.00	20.00	107.50	52.00	159.50
CIT	Biomedical E.	0.00	0.00	0.00	0.00	0.00	0.00	2.00	0.00	2.00	0.00	2.00
	Chemical E.	14.50	0.00	0.00	0.00	0.00	0.00	8.00	2.00	22.50	2.00	24.50
	Civil E.	12.50	3.00	0.00	0.00	1.00	0.00	1.00	0.00	14.50	3.00	17.50
	E & C E.	33.00	0.00	5.00	0.00	0.00	0.00	12.00	0.00	50.00	0.00	50.00
	EPP	7.15	1.00	3.00	1.00	0.00	0.00	3.00	1.00	13.15	3.00	16.15
	Mechanical E.	18.10	1.00	0.00	0.00	0.00	0.00	3.00	0.00	21.10	1.00	22.10
	MSE	15.50	1.00	1.00	0.00	0.00	0.00	1.00	0.00	17.50	1.00	18.50
	EDRC	0.00	0.00	3.00	0.00	0.00	0.00	3.00	0.00	6.00	0.00	6.00
	Dean's Ofc.	1.50	0.00	0.00	0.00	0.00	0.00	0.00	0.00	1.50	0.00	1.50
	TOTAL CIT	102.25	6.00	12.00	1.00	1.00	0.00	33.00	3.00	148.25	10.00	158.25
	GSIA	GSIA	52.58	7.50	0.00	0.00	0.00	0.00	28.00	5.00	80.58	12.50
Dean's Office		2.00	0.00	0.00	0.00	0.00	0.00	0.00	0.00	2.00	0.00	2.00
TOTAL GSIA		54.58	7.50	0.00	0.00	0.00	0.00	28.00	5.00	82.58	12.50	95.08
H&SS	English	12.00	12.00	0.00	0.00	0.00	1.00	3.00	0.00	15.00	13.00	28.00
	History	12.25	6.50	0.00	0.00	0.00	0.00	1.00	1.00	13.25	7.50	20.75
	Mod. Lang.	2.00	5.00	0.00	0.00	2.00	6.00	4.00	9.00	8.00	20.00	28.00
	Philosophy	8.00	1.00	1.00	1.00	2.00	1.00	1.00	0.00	12.00	3.00	15.00
	Psychology	14.00	9.00	0.00	0.00	0.00	0.00	28.00	19.00	42.00	28.00	70.00
	S & D S.	9.83	2.00	0.00	0.00	1.00	1.00	0.00	2.00	10.83	5.00	15.83
	Statistics	12.00	2.00	1.00	1.00	0.00	0.00	2.00	2.00	15.00	5.00	20.00
	CAAE	0.00	0.00	0.00	0.00	0.00	0.00	1.00	0.00	1.00	0.00	1.00
	CNBC	0.00	0.00	1.00	0.00	0.00	0.00	1.00	1.00	2.00	1.00	3.00
	Dean's Ofc.	1.00	0.00	0.00	0.00	0.00	0.00	1.00	0.00	2.00	0.00	2.00
	TOTAL H&SS	71.08	37.50	3.00	2.00	5.00	9.00	42.00	34.00	121.08	82.50	203.58
INI		0.00	0.00	0.00	0.00	0.00	0.00	1.00	0.00	1.00	0.00	1.00
MCS	Biology	17.00	1.00	0.00	0.00	0.00	1.00	17.00	16.00	34.00	18.00	52.00
	Chemistry	16.00	2.00	2.00	0.00	0.00	1.00	8.00	1.00	26.00	4.00	30.00
	Math	21.00	1.00	0.00	0.00	2.00	1.00	1.00	0.00	24.00	2.00	26.00
	Physics	32.90	1.00	1.00	0.00	1.00	0.00	17.00	1.00	51.90	2.00	53.90
	NMR Ctr.	0.00	0.00	0.00	0.00	0.00	0.00	0.00	1.00	0.00	1.00	1.00
	STC	0.00	0.00	0.92	0.00	0.00	0.00	7.00	1.00	7.92	1.00	8.92
	Dean's Ofc.	1.00	1.00	0.00	0.00	0.00	0.00	2.08	0.00	3.08	1.00	4.08
	TOTAL MCS	87.90	6.00	3.92	0.00	3.00	3.00	52.08	20.00	146.90	29.00	175.90
SCS	Comp. Sci.	33.50	3.00	17.50	1.00	6.00	2.00	22.00	1.00	79.00	7.00	86.00
	HCI	1.00	1.00	3.00	0.00	0.00	0.00	0.00	2.00	4.00	3.00	7.00
	Robotics	3.00	0.00	18.75	1.00	0.00	0.00	15.00	0.00	36.75	1.00	37.75
	CMT	0.00	0.00	4.00	2.00	0.00	0.00	4.00	2.00	8.00	4.00	12.00
	ITC	0.00	0.00	0.00	0.00	0.00	0.00	2.00	0.00	2.00	0.00	2.00
	Dean's Office	0.50	0.00	0.00	0.00	0.00	0.00	0.00	0.00	0.50	0.00	0.50
	TOTAL SCS	38.00	4.00	43.25	4.00	6.00	2.00	43.00	5.00	130.25	15.00	145.25
HNZ	HNZ	21.00	5.50	1.00	1.00	2.00	0.00	6.00	1.70	30.00	8.20	38.20
	Dean's Office	1.00	0.00	0.00	0.00	0.00	0.00	0.00	0.00	1.00	0.00	1.00
	TOTAL HNZ	22.00	5.50	1.00	1.00	2.00	0.00	6.00	1.70	31.00	8.20	39.20
ACADEMIC SUBTOTAL	430.31	91.50	63.17	8.00	30.00	21.00	245.08	88.70	768.56	209.20	977.76	
ADMINISTRATIVE	3.00	0.00	1.00	0.00	0.00	0.00	12.00	25.00	16.00	25.00	41.00	
TOTAL	433.31	91.50	64.17	8.00	30.00	21.00	257.08	113.70	784.56	234.20	1018.76	

CARNEGIE MELLON UNIVERSITY

FULL TIME TENURE/TENURE-TRACK FACULTY BY RANK AND DEPARTMENT
FALL SEMESTER 1996

College	Department	Professor				Instructor	TOTAL
		University	Full	Associate	Assistant		
CFA	Architecture	0.00	8.50	3.00	3.00	0.00	14.50
	Art	0.00	10.00	6.00	2.00	0.00	18.00
	Design	0.00	3.00	6.00	4.00	0.00	13.00
	Drama	0.00	7.00	8.00	4.00	1.00	20.00
	Music	1.00	5.00	5.00	1.00	0.00	12.00
	Dean's Ofc.	0.00	1.00	0.00	1.00	0.00	2.00
	TOTAL CFA		1.00	34.50	28.00	15.00	1.00
CIT	Biomedical E.	0.00	0.00	0.00	0.00	0.00	0.00
	Chemical E.	0.00	11.00	1.00	2.50	0.00	14.50
	Civil E.	1.00	9.50	4.00	1.00	0.00	15.50
	E & C E.	0.50	24.00	5.00	3.50	0.00	33.00
	EPP	0.00	5.15	1.00	2.00	0.00	8.15
	Mechanical E.	0.00	10.10	4.00	5.00	0.00	19.10
	MSE	0.00	11.50	4.00	1.00	0.00	16.50
	Dean's Ofc.	0.00	1.50	0.00	0.00	0.00	1.50
TOTAL CIT		1.50	72.75	19.00	15.00	0.00	108.25
GSIA	GSIA	4.00	21.08	13.00	21.00	1.00	60.08
	Dean's Office	0.00	2.00	0.00	0.00	0.00	2.00
	TOTAL GSIA	4.00	23.08	13.00	21.00	1.00	62.08
H&SS	English	0.00	11.00	6.00	7.00	0.00	24.00
	History	0.00	9.25	7.00	2.50	0.00	18.75
	Mod. Lang.	0.00	2.00	2.00	3.00	0.00	7.00
	Philosophy	0.00	4.00	4.00	1.00	0.00	9.00
	Psychology	1.00	13.00	5.00	4.00	0.00	23.00
	S & D S.	1.50	3.83	4.50	2.00	0.00	11.83
	Statistics	0.00	8.00	4.00	2.00	0.00	14.00
	Dean's Ofc.	0.00	1.00	0.00	0.00	0.00	1.00
TOTAL H&SS		2.50	52.08	32.50	21.50	0.00	108.58
MCS	Biology	0.00	6.00	10.00	2.00	0.00	18.00
	Chemistry	0.00	11.00	2.00	5.00	0.00	18.00
	Math	1.00	17.00	4.00	0.00	0.00	22.00
	Physics	2.00	22.90	8.00	1.00	0.00	33.90
	Dean's Ofc.	0.00	2.00	0.00	0.00	0.00	2.00
	TOTAL MCS		3.00	58.90	24.00	8.00	0.00
SCS	Comput. Sci.	1.00	16.00	8.50	11.00	0.00	36.50
	HCI	0.00	1.00	0.00	1.00	0.00	2.00
	Robotics	0.50	1.00	0.00	1.50	0.00	3.00
	Dean's Office	0.00	0.50	0.00	0.00	0.00	0.50
	TOTAL SCS		1.50	18.50	8.50	13.50	0.00
HNZ	HNZ	0.00	9.00	9.00	8.50	0.00	26.50
	Dean's Office	0.00	1.00	0.00	0.00	0.00	1.00
	TOTAL HNZ		0.00	10.00	9.00	8.50	0.00
ACADEMIC SUBTOTAL		13.50	269.81	134.00	102.50	2.00	521.81
ADMINISTRATIVE		0.00	3.00	0.00	0.00	0.00	3.00
TOTAL		13.50	272.81	134.00	102.50	2.00	524.81

CARNEGIE MELLON UNIVERSITY

FULL TIME TENURE/TENURE-TRACK FACULTY
 BY DEPARTMENT, RACE AND SEX
 FALL SEMESTER 1996

College	Department	Black		AI/AN		A/PI		Hisp.		White		Total		Total
		M	F	M	F	M	F	M	F	M	F	M	F	
CFA	Architecture	0.0	0.0	0.0	0.0	0.0	0.0	0.0	0.0	12.5	2.0	12.5	2.0	14.5
	Art	0.0	0.0	0.0	0.0	0.0	1.0	0.0	0.0	10.0	7.0	10.0	8.0	18.0
	Design	0.0	0.0	0.0	0.0	1.0	0.0	1.0	0.0	9.0	2.0	11.0	2.0	13.0
	Drama	0.0	0.0	0.0	0.0	0.0	0.0	0.0	1.0	12.0	7.0	12.0	8.0	20.0
	Music	1.0	0.0	0.0	0.0	0.0	1.0	3.0	0.0	3.0	4.0	7.0	5.0	12.0
	Dean's Ofc.	0.0	0.0	0.0	0.0	0.0	0.0	0.0	0.0	2.0	0.0	2.0	0.0	2.0
	TOTAL CFA	1.0	0.0	0.0	0.0	1.0	2.0	4.0	1.0	48.5	22.0	54.5	25.0	79.5
CIT	Biomedical E.	0.0	0.0	0.0	0.0	0.0	0.0	0.0	0.0	0.0	0.0	0.0	0.0	0.0
	Chemical E.	0.0	0.0	0.0	0.0	2.0	0.0	0.0	0.0	12.5	0.0	14.5	0.0	14.5
	Civil E.	0.0	0.0	0.0	0.0	1.0	0.0	1.0	0.0	10.5	3.0	12.5	3.0	15.5
	E & C E.	1.0	0.0	0.0	0.0	6.0	0.0	0.5	0.0	26.5	0.0	34.0	0.0	34.0
	EPP	0.0	0.0	0.0	0.0	0.0	1.0	0.0	0.0	7.2	0.0	7.2	1.0	8.2
	Mechanical E.	0.0	0.0	0.0	0.0	4.0	0.0	0.0	1.0	13.1	0.0	17.1	1.0	18.1
	MSE	0.0	0.0	0.0	0.0	2.0	0.0	0.0	0.0	13.5	1.0	15.5	1.0	16.5
	Dean's Ofc.	0.0	0.0	0.0	0.0	0.0	0.0	0.0	0.0	1.5	0.0	1.5	0.0	1.5
	TOTAL CIT	1.0	0.0	0.0	0.0	15.0	1.0	1.5	1.0	84.8	4.0	102.3	6.0	108.3
GSIA	GSIA	0.0	0.0	0.0	0.0	18.0	0.0	1.0	0.0	33.6	7.5	52.6	7.5	60.1
	Dean's Office	0.0	0.0	0.0	0.0	0.0	0.0	0.0	0.0	2.0	0.0	2.0	0.0	2.0
	TOTAL GSIA	0.0	0.0	0.0	0.0	18.0	0.0	1.0	0.0	35.6	7.5	54.6	7.5	62.1
H&SS	English	0.0	0.0	0.0	0.0	1.0	1.0	0.0	0.0	11.0	11.0	12.0	12.0	24.0
	History	1.0	1.0	0.0	0.0	0.0	0.0	0.0	0.0	11.3	5.5	12.3	6.5	18.8
	Mod. Lang.	0.0	0.0	0.0	0.0	0.0	1.0	0.0	1.0	2.0	3.0	2.0	5.0	7.0
	Philosophy	0.0	0.0	0.0	0.0	0.0	0.0	0.0	0.0	8.0	1.0	8.0	1.0	9.0
	Psychology	0.0	0.0	0.0	0.0	0.0	0.0	0.0	0.0	14.0	9.0	14.0	9.0	23.0
	S & D S.	0.0	0.0	0.0	0.0	0.0	0.0	0.0	0.0	9.8	2.0	9.8	2.0	11.8
	Statistics	0.0	0.0	0.0	0.0	1.0	0.0	0.0	0.0	11.0	2.0	12.0	2.0	14.0
	Dean's Ofc.	0.0	0.0	0.0	0.0	0.0	0.0	0.0	0.0	1.0	0.0	1.0	0.0	1.0
	TOTAL H&SS	1.0	1.0	0.0	0.0	2.0	2.0	0.0	1.0	68.1	33.5	71.1	37.5	108.6
MCS	Biology	0.0	0.0	0.0	0.0	1.0	0.0	1.0	0.0	15.0	1.0	17.0	1.0	18.0
	Chemistry	0.0	0.0	0.0	0.0	1.0	0.0	1.0	0.0	14.0	2.0	16.0	2.0	18.0
	Math	0.0	0.0	0.0	0.0	0.0	0.0	0.0	0.0	21.0	1.0	21.0	1.0	22.0
	Physics	0.0	0.0	0.0	0.0	1.0	0.0	0.0	0.0	31.9	1.0	32.9	1.0	33.9
	Dean's Ofc.	0.0	0.0	0.0	0.0	0.0	0.0	0.0	0.0	1.0	1.0	1.0	1.0	2.0
	TOTAL MCS	0.0	0.0	0.0	0.0	3.0	0.0	2.0	0.0	82.9	6.0	87.9	6.0	93.9
SCS	Comp. Sci.	0.0	0.0	0.0	0.0	6.5	1.0	0.0	0.0	27.0	2.0	33.5	3.0	36.5
	HCI	0.0	0.0	0.0	0.0	0.0	0.0	0.0	0.0	1.0	1.0	1.0	1.0	2.0
	Robotics	0.0	0.0	0.0	0.0	0.5	0.0	0.5	0.0	2.0	0.0	3.0	0.0	3.0
	Dean's Office	0.0	0.0	0.0	0.0	0.5	0.0	0.0	0.0	0.0	0.0	0.5	0.0	0.5
	TOTAL SCS	0.0	0.0	0.0	0.0	7.5	1.0	0.5	0.0	30.0	3.0	38.0	4.0	42.0
HNZ	HNZ	1.0	1.0	0.0	0.0	2.0	1.0	0.0	0.0	18.0	3.5	21.0	5.5	26.5
	Dean's Office	0.0	0.0	0.0	0.0	0.0	0.0	0.0	0.0	1.0	0.0	1.0	0.0	1.0
	TOTAL HNZ	1.0	1.0	0.0	0.0	2.0	1.0	0.0	0.0	19.0	3.5	22.0	5.5	27.5
ACADEMIC SUBTOTAL		4.0	2.0	0.0	0.0	48.5	7.0	9.0	3.0	368.8	79.5	430.3	91.5	521.8
ADMIN.		0.0	0.0	0.0	0.0	0.0	0.0	0.0	0.0	3.0	0.0	3.0	0.0	3.0
TOTAL		4.0	2.0	0.0	0.0	48.5	7.0	9.0	3.0	371.8	79.5	433.3	91.5	524.8

CARNEGIE MELLON UNIVERSITY

FULL TIME TENURE/TENURE-TRACK FACULTY
BY TENURE STATUS, DEPARTMENT AND SEX
FALL SEMESTER 1996

College	Department	Tenured			Tenure Stream			Instructors			TOTAL		
		M	F	TOT	M	F	TOT	M	F	TOT	M	F	TOT
CFA	Architecture	8.50	1.00	9.50	4.00	1.00	5.00	0.00	0.00	0.00	12.50	2.00	14.50
	Art	7.00	7.00	14.00	3.00	1.00	4.00	0.00	0.00	0.00	10.00	8.00	18.00
	Design	7.00	1.00	8.00	4.00	1.00	5.00	0.00	0.00	0.00	11.00	2.00	13.00
	Drama	9.00	5.00	14.00	2.00	3.00	5.00	1.00	0.00	1.00	12.00	8.00	20.00
	Music	6.00	4.00	10.00	1.00	1.00	2.00	0.00	0.00	0.00	7.00	5.00	12.00
	Dean's Ofc.	1.00	0.00	1.00	1.00	0.00	1.00	0.00	0.00	0.00	2.00	0.00	2.00
	TOTAL CFA	38.50	18.00	56.50	15.00	7.00	22.00	1.00	0.00	1.00	54.50	25.00	79.50
CIT	Biomedical E.	0.00	0.00	0.00	0.00	0.00	0.00	0.00	0.00	0.00	0.00	0.00	0.00
	Chemical E.	11.00	0.00	11.00	3.50	0.00	3.50	0.00	0.00	0.00	14.50	0.00	14.50
	Civil E.	9.50	1.00	10.50	3.00	2.00	5.00	0.00	0.00	0.00	12.50	3.00	15.50
	E & C E.	24.50	0.00	24.50	8.50	0.00	8.50	0.00	0.00	0.00	33.00	0.00	33.00
	EPP	4.15	0.00	4.15	3.00	1.00	4.00	0.00	0.00	0.00	7.15	1.00	8.15
	Mechanical E.	10.10	0.00	10.10	8.00	1.00	9.00	0.00	0.00	0.00	18.10	1.00	19.10
	MSE	11.50	0.00	11.50	4.00	1.00	5.00	0.00	0.00	0.00	15.50	1.00	16.50
	Dean's Ofc.	1.50	0.00	1.50	0.00	0.00	0.00	0.00	0.00	0.00	1.50	0.00	1.50
TOTAL CIT	72.25	1.00	73.25	30.00	5.00	35.00	0.00	0.00	0.00	102.25	6.00	108.25	
GSIA	GSIA	29.58	2.50	32.08	22.00	5.00	27.00	1.00	0.00	1.00	52.58	7.50	60.08
	Dean's Office	2.00	0.00	2.00	0.00	0.00	0.00	0.00	0.00	0.00	2.00	0.00	2.00
	TOTAL GSIA	31.58	2.50	34.08	22.00	5.00	27.00	1.00	0.00	1.00	54.58	7.50	62.08
H&SS	English	10.00	5.00	15.00	2.00	7.00	9.00	0.00	0.00	0.00	12.00	12.00	24.00
	History	10.25	5.00	15.25	2.00	1.50	3.50	0.00	0.00	0.00	12.25	6.50	18.75
	Mod. Lang.	1.00	3.00	4.00	1.00	2.00	3.00	0.00	0.00	0.00	2.00	5.00	7.00
	Philosophy	7.00	1.00	8.00	1.00	0.00	1.00	0.00	0.00	0.00	8.00	1.00	9.00
	Psychology	12.00	5.00	17.00	2.00	4.00	6.00	0.00	0.00	0.00	14.00	9.00	23.00
	S & D S.	6.33	2.00	8.33	3.50	0.00	3.50	0.00	0.00	0.00	9.83	2.00	11.83
	Statistics	9.00	1.00	10.00	3.00	1.00	4.00	0.00	0.00	0.00	12.00	2.00	14.00
	Dean's Ofc.	1.00	0.00	1.00	0.00	0.00	0.00	0.00	0.00	0.00	1.00	0.00	1.00
TOTAL H&SS	56.58	22.00	78.58	14.50	15.50	30.00	0.00	0.00	0.00	71.08	37.50	108.58	
MCS	Biology	13.00	1.00	14.00	4.00	0.00	4.00	0.00	0.00	0.00	17.00	1.00	18.00
	Chemistry	13.00	0.00	13.00	3.00	2.00	5.00	0.00	0.00	0.00	16.00	2.00	18.00
	Math	20.00	1.00	21.00	1.00	0.00	1.00	0.00	0.00	0.00	21.00	1.00	22.00
	Physics	29.90	0.00	29.90	3.00	1.00	4.00	0.00	0.00	0.00	32.90	1.00	33.90
	Dean's Ofc.	1.00	1.00	2.00	0.00	0.00	0.00	0.00	0.00	0.00	1.00	1.00	2.00
TOTAL MCS	76.90	3.00	79.90	11.00	3.00	14.00	0.00	0.00	0.00	87.90	6.00	93.90	
SCS	Comp. Sci.	19.50	2.00	21.50	14.00	1.00	15.00	0.00	0.00	0.00	33.50	3.00	36.50
	HCI	1.00	0.00	1.00	0.00	1.00	1.00	0.00	0.00	0.00	1.00	1.00	2.00
	Robotics	1.50	0.00	1.50	1.50	0.00	1.50	0.00	0.00	0.00	3.00	0.00	3.00
	Dean's Office	0.50	0.00	0.50	0.00	0.00	0.00	0.00	0.00	0.00	0.50	0.00	0.50
TOTAL SCS	22.50	2.00	24.50	15.50	2.00	17.50	0.00	0.00	0.00	38.00	4.00	42.00	
HNZ	HNZ	11.50	0.50	12.00	9.50	5.00	14.50	0.00	0.00	0.00	21.00	5.50	26.50
	Dean's Office	1.00	0.00	1.00	0.00	0.00	0.00	0.00	0.00	0.00	1.00	0.00	1.00
	TOTAL HNZ	12.50	0.50	13.00	9.50	5.00	14.50	0.00	0.00	0.00	22.00	5.50	27.50
ACADEMIC													
SUBTOTAL		310.81	49.00	359.81	117.50	42.50	160.00	2.00	0.00	2.00	430.31	91.50	521.81
ADMIN.		3.00	0.00	3.00	0.00	0.00	0.00	0.00	0.00	0.00	3.00	0.00	3.00
TOTAL		313.81	49.00	362.81	117.50	42.50	160.00	2.00	0.00	2.00	433.31	91.50	524.81

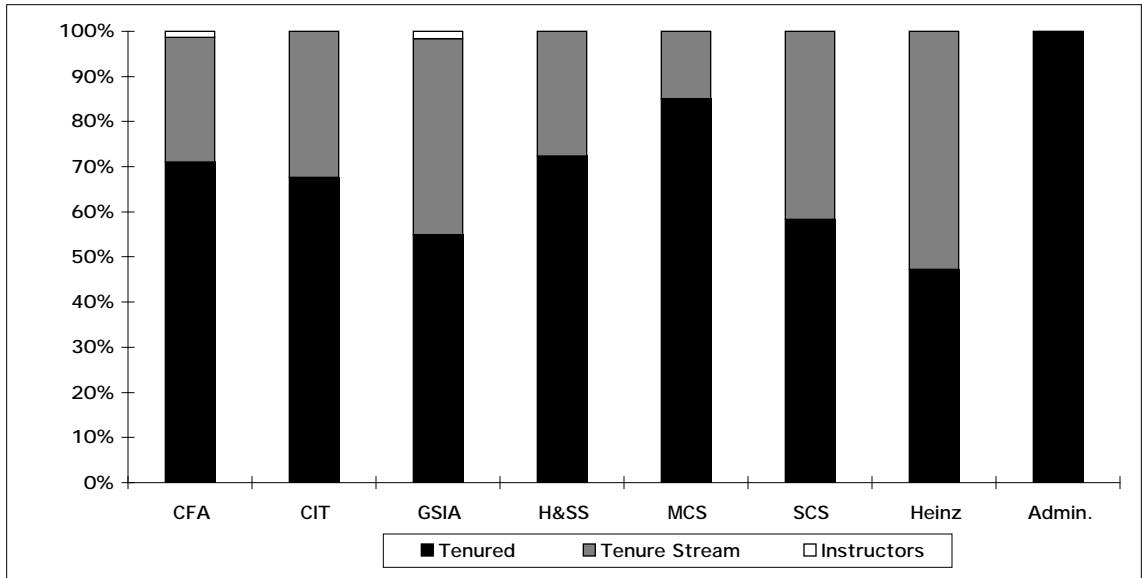
CARNEGIE MELLON UNIVERSITY

FULL TIME TENURE/TENURE-TRACK FACULTY
BY TENURE STATUS AND COLLEGE
FALL SEMESTERS 1992 to 1996

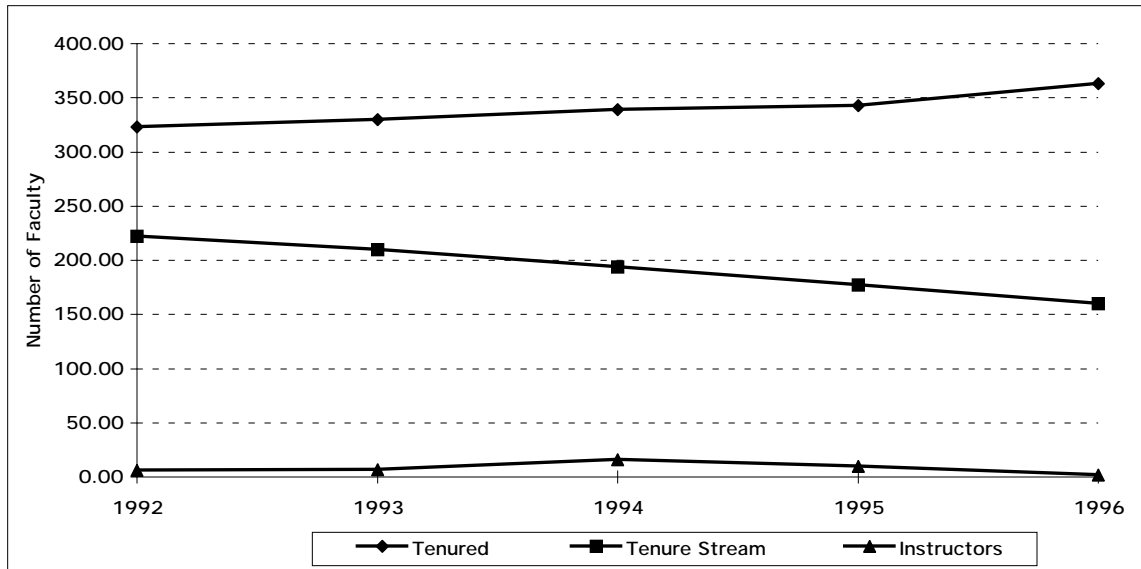
College	Tenure Status	1992	1993	1994	1995	1996
CFA	Tenured	39.5	42.5	47.0	49.5	56.50
	Tenure Stream	49.0	39.0	28.0	26	22.00
	Instructors	2.0	1.0	2.0	0	1.00
	Total	90.5	82.5	77.0	75.5	79.5
CIT	Tenured	72.5	70.8	73.5	71.8	73.25
	Tenure Stream	43.5	41.5	35.0	33	35.00
	Instructors	1.0	1.0	7.0	2	0.00
	Total	117.0	113.3	115.5	106.8	108.3
GSIA	Tenured	28.3	28.3	25.3	29.3	34.1
	Tenure Stream	30.0	29.0	29.0	30	27.0
	Instructors	2.0	3.0	4.0	5	1.0
	Total	60.3	60.3	58.3	64.3	62.1
H&SS	Tenured	68.8	70.0	72.3	73.5	78.6
	Tenure Stream	38.5	39.5	44.0	35.5	30.0
	Instructors	0.0	1.0	0.0	1	0.0
	Total	107.3	110.5	116.3	110.0	108.6
MCS	Tenured	76.3	76.0	77.0	77	79.9
	Tenure Stream	21.0	22.0	23.0	20	14.0
	Instructors	0.0	0.0	0.0	0	0.0
	Total	97.3	98.0	100.0	97.0	93.9
SCS	Tenured	18.0	21.0	23.3	20	24.5
	Tenure Stream	21.0	22.0	19.0	19	17.5
	Instructors	1.0	0.0	0.0	0	0.0
	Total	40.0	43.0	42.3	39.0	42.0
HNZ	Tenured	8.8	12.0	11.0	12	13.0
	Tenure Stream	18.0	16.0	16.0	14	14.5
	Instructors	0.0	1.0	1.0	2	0.0
	Total	26.8	29.0	28.0	28.0	27.5
ACADEMIC SUBTOTAL						
	Tenured	312.0	320.5	329.5	333.0	359.8
	Tenure Stream	221.0	209.0	194.0	177.5	160.0
	Instructors	6.0	7.0	14.0	10.0	2.0
	Total	539.0	536.5	537.5	520.5	521.8
ADMINISTRATIVE						
	Tenured	11.0	9.5	9.5	9.5	3.0
	Tenure Stream	1.0	1.0	0.0	0.0	0.0
	Instructors	0.0	0.0	2.0	0.0	0.0
	Total	12.0	10.5	11.5	9.5	3.0
CMU	Tenured	323.0	330.0	339.0	342.5	362.8
	Tenure Stream	222.0	210.0	194.0	177.5	160.0
	Instructors	6.0	7.0	16.0	10.0	2.0
	Total	551.0	547.0	549.0	530.0	524.8

CARNEGIE MELLON UNIVERSITY

FULL TIME TENURE/TENURE-TRACK FACULTY
BY TENURE STATUS AND COLLEGE
FALL SEMESTER 1996

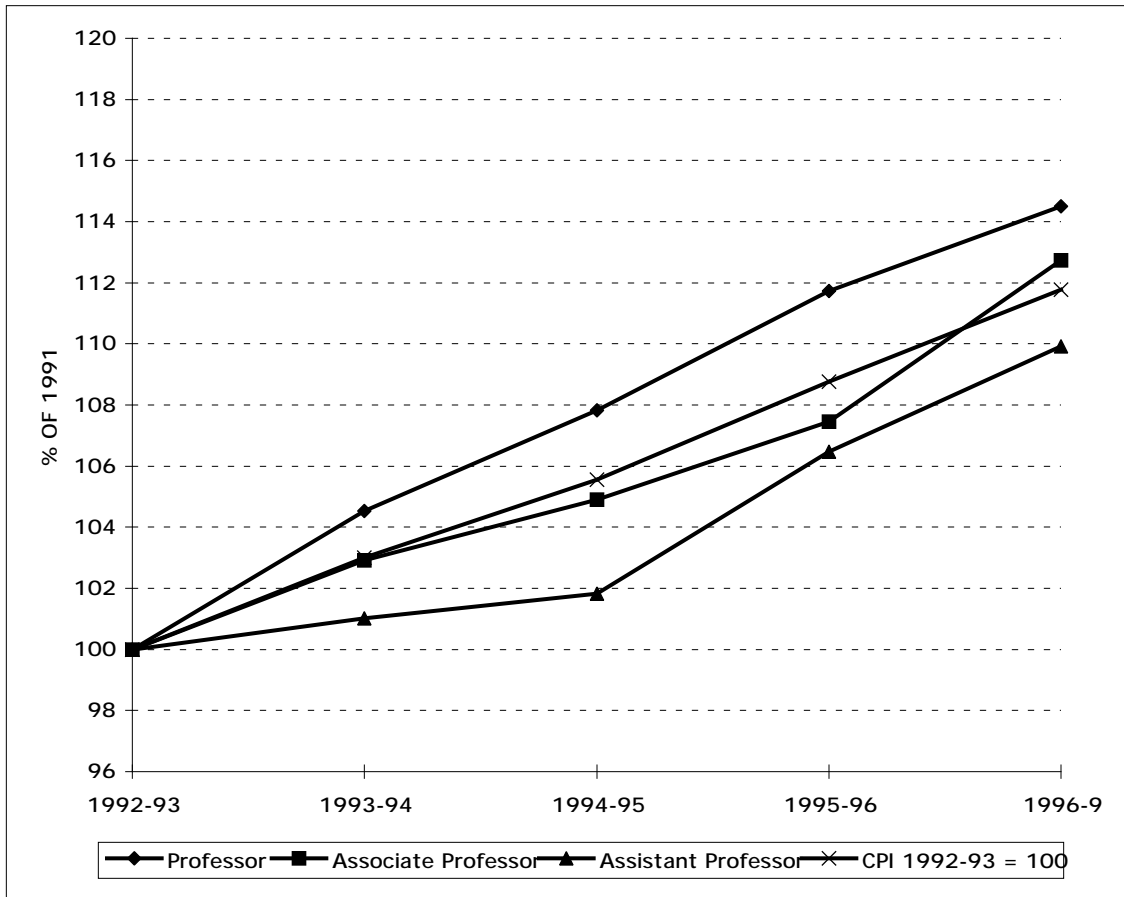


FULL TIME TENURE/TENURE-TRACK FACULTY
BY TENURE STATUS
FALL SEMESTERS 1992 to 1996



CARNEGIE MELLON UNIVERSITY

FACULTY SALARIES INDEXED GROWTH
 FULL TIME TENURE/TENURE-TRACK FACULTY
 ACADEMIC YEARS 1992-93 to 1996-97



AVERAGE FACULTY SALARIES
 FULL TIME TENURE/TENURE-TRACK FACULTY
 ACADEMIC YEARS 1992-93 to 1996-97

	1992-93	1993-94	1994-95	1995-96	1996-97
Professor	\$79,300	\$82,900	\$85,500	\$88,600	\$91,100
Associate Professor	\$55,000	\$56,600	\$57,700	\$59,100	\$62,100
Assistant Professor	\$49,400	\$49,900	\$50,300	\$52,600	\$54,300

CARNEGIE MELLON UNIVERSITY

TENURE/TENURE-TRACK FACULTY
ADDITIONAL FACTS AND FIGURES

DISTRIBUTION BY SEX, RACE AND AGE
FALL SEMESTERS 1992 to 1996

Percent of Faculty by Sex	1992	1993	1994	1995	1996
Male	84%	84%	84%	84%	82%
Female	16%	16%	16%	16%	18%

Percent of Faculty by Race	1992	1993	1994	1995	1996
Asian	3%	3%	5%	7%	4%
Black	1%	1%	1%	1%	1%
Hispanic	1%	1%	1%	1%	1%
White	77%	76%	77%	79%	75%
Non-U.S. Citizen	18%	19%	16%	12%	19%

Percent of Faculty by Age	1992	1993	1994	1995	1996
Under 30	3%	1%	2%	3%	3%
30 to 39	34%	32%	32%	29%	29%
40 to 49	33%	35%	34%	33%	34%
50 to 59	18%	20%	20%	22%	22%
60 and Over	12%	12%	12%	13%	12%

TOP TEN INSTITUTIONS GRANTING DEGREES TO FACULTY
FALL SEMESTER 1995*

* INSTITUTIONS GRANTING DEGREES TO FACULTY WAS NOT AVAILABLE AT TIME OF PUBLICATION

Carnegie Mellon University	52	University of Michigan, Ann Arbor	18
Massachusetts Institute of Technology	43	Yale University	17
Stanford University	32	Cornell University	16
University of California, Berkeley	31	University of Pennsylvania	14
Harvard University	21	University of Chicago	13
		University of California	13

49 % of the Tenure/Tenure-Track Faculty received degrees from the above institutions.

98 % of the Tenure/Tenure-Track Faculty hold a Ph.D. or terminal degree.

AVERAGE FACULTY SALARIES BY RANK, FALL 1995*

PERCENT CHANGE IN FACULTY SALARIES
FALL 1991 TO FALL 1995

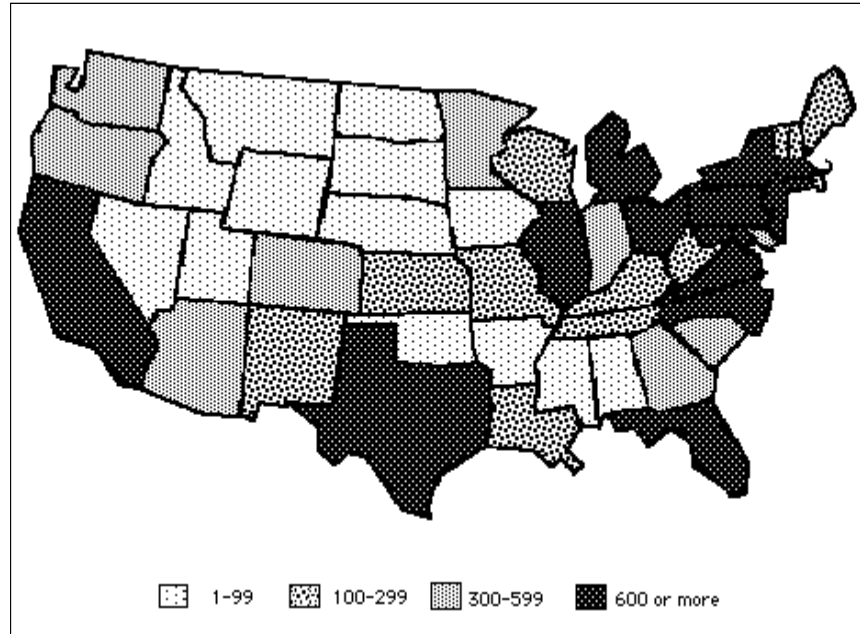
* 1996 FACULTY SALARIES FOR COMPETITOR SCHOOLS WERE NOT AVAILABLE AT TIME OF PUBLICATION

	Professor		Associate		Assistant	
	\$	%	\$	%	\$	%
CMU	88,600	12.3%	59,100	11.3%	52,600	11.4%
Princeton	101,400	15.0%	60,300	15.3%	46,500	12.6%
Stanford	103,300	19.4%	69,900	13.3%	55,100	14.1%
MIT	96,900	15.5%	67,100	11.6%	54,300	9.7%
U. of Chicago	96,500	15.8%	62,100	14.2%	55,400	13.8%
U. of Penn	96,500	20.0%	64,200	12.0%	54,700	12.6%
Northwestern	92,000	16.3%	64,500	18.6%	54,700	13.7%
Cornell	82,200	9.7%	59,400	14.2%	48,300	5.0%
U. of Rochest.	78,500	6.7%	54,900	6.6%	47,800	9.4%
Wash. U.	84,500	16.4%	56,700	12.9%	49,400	17.6%
RPI	80,100	13.3%	58,100	10.9%	51,600	15.7%

ALUMNI

CARNEGIE MELLON UNIVERSITY

ACTIVE ALUMNI
BY REGION AND STATE
AS OF DECEMBER 1996



Region / State	Region / State	Region / State	Region / State
New England	South	Midwest	West
Connecticut 968	Arkansas 43	Illinois 1,238	Alaska 31
Maine 129	Alabama 159	Indiana 383	California 4,576
Massachusetts 1,842	Florida 1,820	Iowa 78	Colorado 519
New Hampshire 215	Georgia 543	Kansas 120	Hawaii 71
Rhode Island 112	Kentucky 158	Michigan 941	Idaho 55
Vermont 111	Louisiana 150	Minnesota 315	Montana 22
TOTAL 3,377	Mississippi 37	Missouri 264	Nevada 75
Percent of Total 7%	North Carolina 841	Nebraska 44	Oregon 301
	South Carolina 351	North Dakota 9	Utah 72
Middle States	Tennessee 293	South Dakota 17	Washington 553
Delaware 264	Virginia 1,720	Wisconsin 252	Wyoming 22
District of Col. 325	TOTAL 6,115	TOTAL 3,661	TOTAL 6,297
Maryland 1,889	Percent of Total 12%	Percent of Total 7%	Percent of Total 12%
New Jersey 2,304	Southwest		
New York 3,983	Arizona 443	U.S. Territories 42	U.S. TOTAL 48,265
Ohio 2,374	New Mexico 184		Percent of Total 95%
Pennsylvania 15,298	Oklahoma 94		Foreign Countries 2,351
West Virginia 298	Texas 1,287		Percent of Total 5%
TOTAL 26,735	TOTAL 2,008		TOTAL 50,616
Percent of Total 53%	Percent of Total 4%		

CARNEGIE MELLON UNIVERSITY

ACTIVE ALUMNI ADDITIONAL FACTS AND FIGURES AS OF DECEMBER 1995

Active Alumni* by Major U.S. Cities

Greater Pittsburgh Area**	12,289	Atlanta	550
Metro New York***	3,038	Houston	529
Washington, D.C.****	2,470	Denver	519
San Francisco	2,098	Harrisburg	475
Philadelphia	1,691	Phoenix	443
Boston	1,690	Dallas	386
Los Angeles	1,355	Seattle	387
Princeton	1,107	Rochester	344
Baltimore	1,041	Columbus	327
Chicago	1,058	Ft. Lauderdale	342
Cleveland	780	San Diego	337
Detroit	700	Cincinnati	300
Hartford	602	Minneapolis/St. Paul	265
Akron	563	Buffalo	226

*Active Alumni includes all alumni who maintain a current address with CMU.

** Includes Altoona, Beaver County, Westmoreland County and Metro Pittsburgh area.

*** Includes Long Island, Fairfield/Westchester and North New Jersey

****Includes Northern VA, Southern MD and the DC area.

Active Alumni by College

CFA	8,630	Margaret Morrison	3,772
CIT	17,024	MCS	5,916
GSIA	3,870	Printing Management	656
H&SS	4,900	SCS	593
IM	2,344	HNZ	2,214
Industries	138	Robotics & INI	161
Libraries	398	Total	50,616

Active Alumni by Class Year in Decades

1909 - 1919	27	1960 - 1969	7,178
1920 - 1929	383	1970 - 1979	8,428
1930 - 1939	1,914	1980 - 1989	11,941
1940 - 1949	3,950	1990 - 1994	10,764
1950 - 1959	6,031	Total	50,616

FINANCES

CARNEGIE MELLON UNIVERSITY

TUITION AND FEES

ACADEMIC YEARS 1992-93 to 1996-97

	1992-93	1993-94	1994-95	1995-96	1996-97
Undergraduate Tuition	\$16,000	\$16,960	\$17,900	\$18,600	\$19,400
Graduate Tuition					
CFA	\$12,000	\$16,960	\$17,900	\$18,600	\$19,400
CIT	16,750	17,710	18,400	18,850	19,400
GSIA	18,500	19,500	20,400	21,300	22,100
H&SS	16,000	16,960	17,900	18,600	19,400
INI*	33,501	35,420	36,800	37,700	37,700
MCS	16,000	16,960	17,900	18,600	19,400
SCS	16,750	17,500	18,400	18,850	19,400
HNZ	15,500	16,700	17,900	18,600	19,400
Student Activities Fee	\$100	\$100	\$100	\$100	\$100

* Tuition is for a 14 month program.

ACADEMIC YEARS 1992-93 to 1996-97

ROOM AND BOARD

	1992-93	1993-94	1994-95	1995-96	1996-97
Average Room (Standard Double)	\$3,210	\$3,400	\$3,510	\$3,610	\$3,710
Average Board (19 Meal Plan 1991-92) (Constant Pass 1992-93 through 1994-95) (12 Meals/wk + \$170 declining balance/sem. 1995-96 and 1996-97)	\$2,000	\$2,100	\$2,170	\$2,290	\$2,370

Total Estimated Cost* of Attending CMU

ACADEMIC YEARS 1992-93 to 1996-97

	1992-93	1993-94	1994-95	1995-96	1996-97
Resident	\$23,010	\$24,100	\$25,130	\$26,040	\$27,030
Commuter	\$19,215	\$20,105	\$21,050	\$21,773	\$22,817

*Cost includes: tuition and activities fee, books and supplies, incidentals, room and board for on-campus residents and lunches and transportation for commuters.

CARNEGIE MELLON UNIVERSITY

CURRENT FUNDS REVENUES, EXPENDITURES, AND TRANSFERS
 FISCAL YEARS 1992 to 1996
 (Dollars in Thousands)

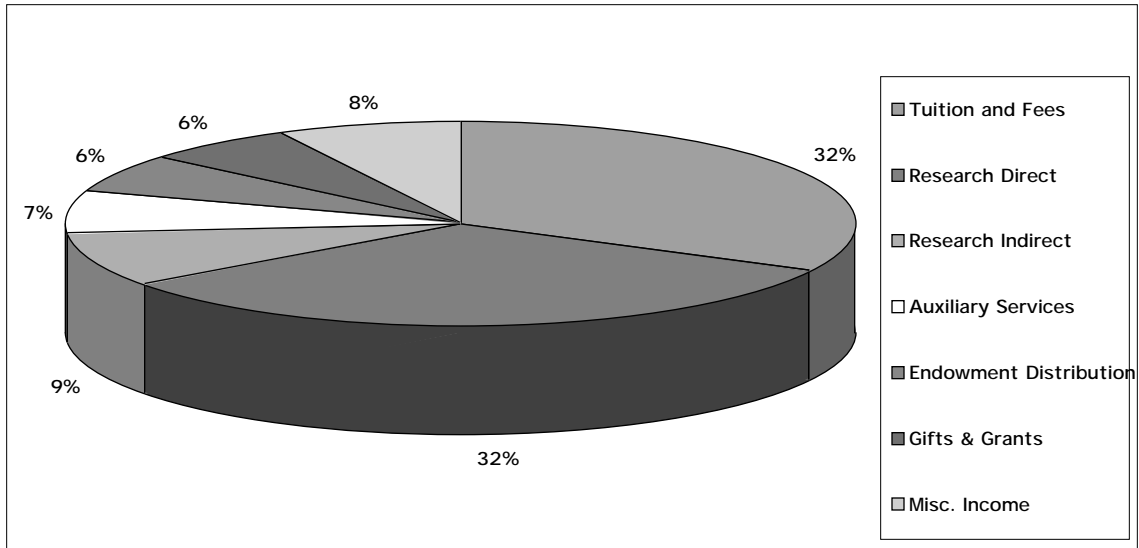
	1992	1993	1994	1995	1996
Revenues					
Tuition and Fees	\$103,958	\$108,256	\$118,988	\$123,821	\$133,390
Endowment Distribution	\$20,934	\$22,898	\$22,434	\$23,840	\$24,544
Gifts & Grants	\$18,248	\$15,455	\$18,035	\$20,392	\$24,234
Sponsored Research	\$136,904	\$146,727	\$150,709	\$151,978	\$164,983
Auxiliary Services	\$26,315	\$26,826	\$27,279	\$27,542	\$28,717
Miscellaneous Income	\$19,098	\$17,400	\$21,392	\$22,859	\$30,920
TOTAL REVENUES	\$325,457	\$337,562	\$358,837	\$370,432	\$406,788
Current Funds Expenditures and Transfers					
	1992	1993	1994	1995	1996
Expenditures (by Functions)					
Instruction & Department Research	\$93,702	\$101,466	\$108,998	\$110,054	\$121,116
Academic Support	\$20,688	\$21,022	\$23,775	\$28,471	\$31,179
Sponsored Research - Direct Costs	\$104,295	\$109,238	\$114,853	\$117,343	\$129,075
Student Aid	\$21,366	\$23,682	\$28,944	\$30,863	\$33,305
Campus Operation	\$7,111	\$6,782	\$7,227	\$7,629	\$8,214
Utilities	\$5,895	\$5,477	\$5,826	\$5,594	\$5,971
Administration	\$13,253	\$13,114	\$13,600	\$14,514	\$14,771
Student Services	\$8,655	\$9,191	\$9,884	\$10,259	\$11,066
General Institutional	\$4,706	\$5,064	\$3,751	\$2,541	\$3,725
Auxiliary Services	\$26,587	\$26,618	\$27,060	\$27,905	\$28,330
TOTAL	\$306,258	\$321,654	\$343,918	\$355,173	\$386,752
Transfers					
Capital	\$14,536	\$13,739	\$14,182	\$12,233	\$9,467
Other	\$666	\$355	(\$1,607)	(\$195)	\$4,812
TOTAL	\$15,202	\$14,094	\$12,575	\$12,038	\$14,279
TOTAL EXPENDITURES and TRANSFERS	\$321,460	\$335,748	\$356,493	\$367,211	\$401,031

CARNEGIE MELLON UNIVERSITY

DISTRIBUTION OF CURRENT FUNDS REVENUES

FISCAL YEAR 1996

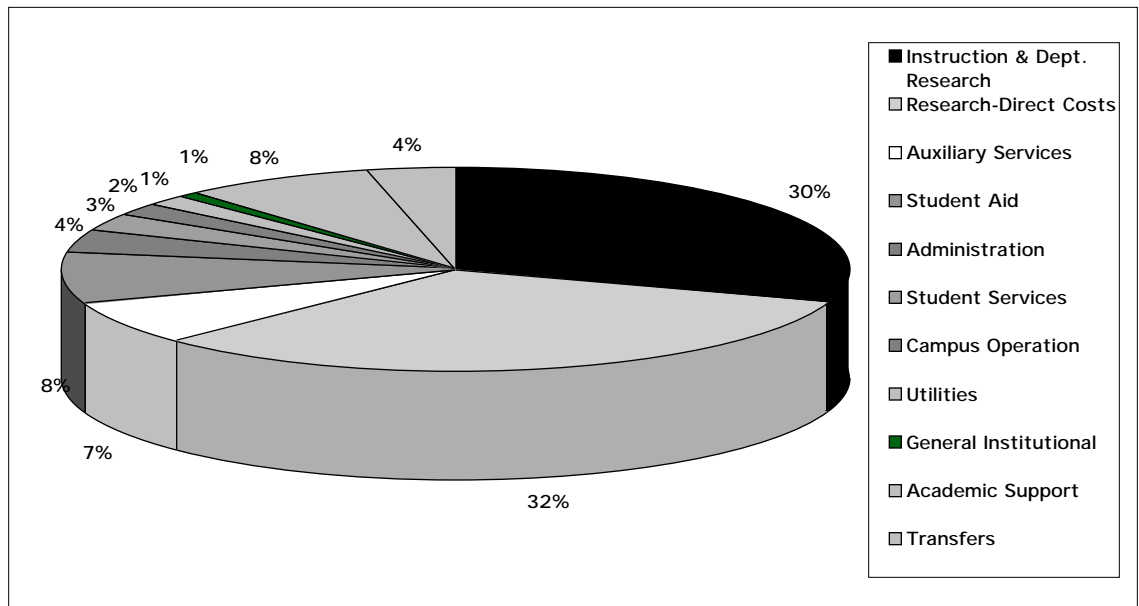
(Total= \$406,788,000)



DISTRIBUTION OF CURRENT FUNDS EXPENDITURES AND TRANSFERS

FISCAL YEAR 1996

(Total= \$401,031,000)



CARNEGIE MELLON UNIVERSITY

TOTAL SPONSORED RESEARCH COSTS
BY COLLEGE AND RESEARCH CENTER
FISCAL YEARS 1992 to 1996
(Dollars in Thousands)

	1992	1993	1994	1995	1996
Direct Costs					
CIT	\$18,281	\$16,559	\$18,663	\$20,638	\$23,279
CFA	434	385	543	606	835
H&SS	5,248	5,456	5,989	6,317	7,105
MCS	15,768	17,988	19,239	20,328	22,375
SCS	25,876	27,027	31,107	30,917	34,096
GSIA	1,534	1,807	1,734	1,652	1,971
HEINZ	811	930	797	816	808
CMRI	6,760	7,492	5,396	5,910	7,138
SEI	29,363	31,013	30,924	29,424	30,908
Other	220	581	465	735	1,234
TOTAL	\$104,295	\$109,238	\$114,857	\$117,343	\$129,749

Indirect Costs

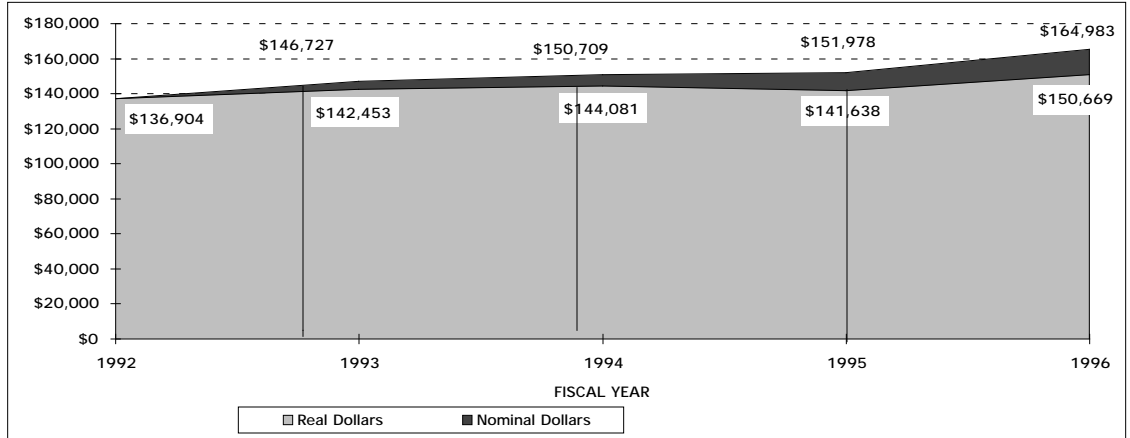
CIT	\$6,530	\$6,709	\$7,036	\$7,250	\$7,050
CFA	94	145	228	225	274
H&SS	1,668	1,751	1,893	1,895	1,831
MCS	5,936	6,651	7,367	7,776	6,820
SCS	11,110	13,352	13,436	11,477	12,023
GSIA	513	713	758	739	847
HEINZ	277	378	389	225	277
CMRI	3,209	3,597	2,561	2,605	2,974
SEI	3,189	4,059	1,969	2,101	2,767
Other	83	137	215	342	371
TOTAL	\$32,609	\$37,492	\$35,852	\$34,635	\$35,234

Total Sponsored Research Costs

CIT	\$24,811	\$23,268	\$25,699	\$27,888	\$30,329
CFA	528	530	771	831	1,109
H&SS	6,916	7,207	7,882	8,212	8,936
MCS	21,704	24,639	26,606	28,104	29,195
SCS	36,986	40,379	44,543	42,394	46,119
GSIA	2,047	2,520	2,492	2,391	2,818
HEINZ	1,088	1,308	1,186	1,041	1,085
CMRI	9,969	11,089	7,957	8,515	10,112
SEI	32,552	35,072	32,893	31,525	33,675
Other	303	718	680	1,077	1,605
TOTAL	\$136,904	\$146,730	\$150,709	\$151,978	\$164,983

CARNEGIE MELLON UNIVERSITY

SPONSORED RESEARCH COSTS
 REAL VERSUS NOMINAL GROWTH
 FISCAL YEARS 1992 to 1996



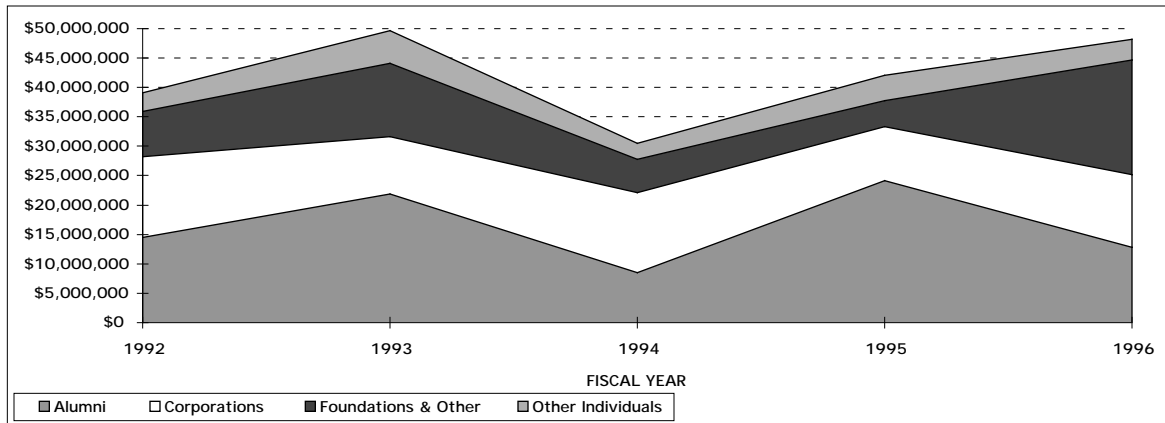
Real dollars calculated using the 2nd quarter implicit price deflator with 1992 as the base year.

TOTAL SPONSORED RESEARCH COSTS BY AGENCY
 FISCAL YEARS 1992 to 1996

	1992	1993	1994	1995	1996
Federal					
Defense	\$60,157,000	\$64,557,000	\$65,841,000	\$60,860,000	\$68,079,000
National Science Foundation	25,241,000	27,840,000	30,933,000	31,418,000	35,319,000
Health & Human Services	6,787,000	7,534,000	8,853,000	8,601,000	7,800,000
Energy	3,441,000	4,726,000	6,081,000	7,285,000	6,504,000
Other Federal	6,795,000	9,081,000	8,730,000	8,117,000	7,804,000
TOTAL	\$102,421,000	\$113,738,000	\$120,438,000	\$116,281,000	\$125,506,000
Non-Federal					
Industrial	\$18,998,000	\$18,237,000	\$14,237,000	\$17,769,000	\$21,520,000
Other Non-Federal	15,485,000	14,752,000	16,034,000	17,928,000	17,957,000
TOTAL	\$34,483,000	\$32,989,000	\$30,271,000	\$35,697,000	\$39,477,000
TOTAL	\$136,904,000	\$146,727,000	\$150,709,000	\$151,978,000	\$164,983,000

CARNEGIE MELLON UNIVERSITY

TOTAL GIVING BY SOURCE
 NOMINAL DOLLARS
 FISCAL YEARS 1992 to 1996

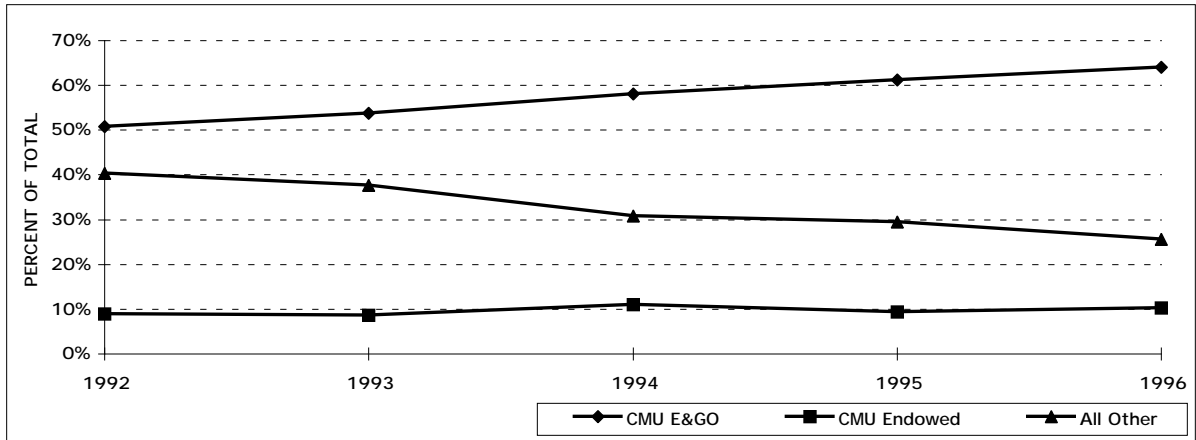


VOLUNTARY SUPPORT
 BY SOURCE AND PURPOSE
 FISCAL YEARS 1992 to 1996

	1992	1993	1994	1995	1996
Current Operations					
Alumni	\$4,786,556	\$1,955,531	\$2,430,340	\$6,058,261	\$2,103,513
Other Individuals (Includes Parents of Students)	1,555,594 N/A	1,132,022 159,808	747,679 168,893	801,369 N/A	754,043 N/A
Foundations & Other	4,569,194	4,754,060	4,777,616	3,661,139	6,650,621
Corporations	4,609,945	3,291,248	3,819,643	3,307,497	5,841,590
TOTAL	\$15,521,289	\$11,132,861	\$11,775,278	\$13,828,266	\$15,349,767
Capital					
Alumni	\$9,696,973	\$19,968,379	\$6,059,242	\$18,104,263	\$10,738,096
Other Individuals (Includes Parents of Students)	1,588,705 N/A	4,467,880 24,640	1,972,317 65,586	3,481,207 N/A	2,783,007 N/A
Foundations & Other	3,117,770	7,675,901	830,189	690,000	12,810,517
Corporations	9,169,830	6,448,938	9,834,473	5,906,913	6,506,303
TOTAL	\$23,573,278	\$38,561,098	\$18,696,221	\$28,182,383	\$32,837,923
Total Giving					
Alumni	\$14,483,529	\$21,923,910	\$8,489,582	\$24,162,524	\$12,841,609
Other Individuals (Includes Parents of Students)	3,144,299 N/A	5,599,902 184,448	2,719,996 234,479	4,282,576 N/A	3,537,050 N/A
Foundations & Other	7,686,964	12,429,961	5,607,805	4,351,139	19,461,138
Corporations	13,779,775	9,740,186	13,654,116	9,214,410	12,347,893
TOTAL	\$39,094,567	\$49,693,959	\$30,471,499	\$42,010,649	\$48,187,690

CARNEGIE MELLON UNIVERSITY

UNDERGRADUATE SCHOLARSHIPS BY SOURCE, PERCENT OF TOTAL FISCAL YEARS 1992 to 1996



*All other includes Federal, State and Other Grant Resources

UNDERGRADUATE FINANCIAL AID RESOURCES

BY SOURCE

FISCAL YEARS 1992 to 1996

(Dollars in Thousands)

	1992	1993	1994	1995	1996
Scholarships & Grants					
Federal - PELL	\$1,231	\$1,361	\$1,470	\$1,424	\$1,361
Federal - SEOG	1,745	1,819	1,987	1,960	1,948
State - PHEAA	1,492	1,501	1,527	1,443	1,371
Other State Grants	108	150	105	96	89
CMU E&GO	12,758	14,398	17,923	19,230	22,260
CMU Endowed	2,243	2,313	3,419	2,945	3,588
CMU Gifts and Grants	274	231	166	142	124
ROTC	2,610	2,673	2,070	1,897	1,525
Other Grant Resources	2,682	2,345	2,214	2,297	2,500
TOTAL	\$25,143	\$26,791	\$30,881	\$31,435	\$34,766
Self-Help					
Workstudy	\$1,449	\$1,507	\$1,498	\$1,452	\$1,507
Loans	8,196	8,418	10,166	10,869	13,186
TOTAL	\$9,645	\$9,925	\$11,664	\$12,321	\$14,693
TOTAL	\$34,788	\$36,716	\$42,545	\$43,756	\$49,459
% of Undergraduates with Need	60.0%	70.0%	70.0%	61.1%	61.5%

CARNEGIE MELLON UNIVERSITY

FINANCES
 ADDITIONAL FACTS AND FIGURES
 UNDERGRADUATE COMPARISON BY BENCHMARK COMPETITORS
 ACADEMIC YEAR 1996-97

	<u>School</u>	<u>Tuition & Fees</u>	<u>Room & Board*</u>
	Carnegie Mellon	\$19,500	\$5,850
Tier 1	MIT	22,000	6,350
	Princeton	22,000	6,325
	Cornell	20,974	7,035
	Univ. of Pennsylvania	21,130	7,500
	Stanford	20,490	7,337
Avg. Tier 1		\$21,319	\$6,909
Tier 2	Univ. of Chicago	21,300	7,275
	Washington (St. Louis)	20,200	6,210
	RPI	19,652	6,135
	Univ. of Rochester	20,105	6,930
	Northwestern	18,108	6,054
Avg. Tier 2		\$19,873	\$6,521

CMU: Double Room-12 Meal Plan w/ \$170 Declining Semester Balance
 Competitor Source: College Costs and Financial Aid Handbook by The College Board

CARNEGIE MELLON TUITION BENEFITS
 FISCAL YEARS 1992 to 1996
 (Dollars in Thousands)

	<u>1992</u>	<u>1993</u>	<u>1994</u>	<u>1995</u>	<u>1996</u>
Total	\$3,555	\$3,599	\$4,035	\$4,106	\$4,467

Endowment Statistics
 Fiscal Years 1991 to 1995
 (Dollars in Thousands)

	<u>1992</u>	<u>1993</u>	<u>1994</u>	<u>1995</u>	<u>1996</u>
Market Value	\$361,091	\$404,531	\$414,700	\$453,539	\$524,305
Life Income Funds	22,091	25,036	24,120	24,498	23,255
Rank	41	41	38	43	N/A
Endowment/FTE Student	\$55,320	\$62,767	\$63,471	\$68,441	\$72,739
Rank*	83	87	88	91	N/A

*Private Institutions Only Source: NACUBO Endowment Reports (FY96 Not Available at Publication Time)

SPACE AND FACILITIES

CARNEGIE MELLON UNIVERSITY

TOTAL SPACE IN SQUARE FOOTAGE
BY MAJOR DIVISION, COLLEGE/DIVISION, AND USE CATEGORY
AS OF JUNE 30, 1996

Major Division College/Division	Use Category										
	Classrm & Serv	Labs Studios & Serv	Office & Serv	Conf/Mtg Asmbly/Exc & Serv	Food/ Lounge Merch & Serv	Study Data Proc & Serv	Shops/Ven Food & Gen & Serv	Housing	Other	Leased	TOTAL
President	0	0	3,522	994	0	0	10	0	131	0	4,657
Provost											
CIT	1,179	117,786	95,423	7,350	4,314	5,266	8,538	0	2,082	495	242,433
CFA	20,007	114,068	32,643	12,240	253	2,453	11,656	0	1,247	700	195,267
H&SS	1,696	20,853	69,979	3,617	1,266	713	371	0	60	0	98,555
MCS	1,159	137,429	77,612	4,981	1,996	6,062	10,313	0	2,402	0	241,954
SCS	4,974	51,625	73,349	7,237	2,156	15,599	2,274	0	0	67,900	225,114
GSIA	12,694	2,033	35,085	2,108	5,032	8,177	0	0	0	0	65,129
HNZ	577	3,598	19,003	1,157	1,306	302	0	0	0	0	25,943
CMRI	0	32,303	25,114	4,666	1,822	0	2,242	0	6,338	4,000	76,485
INI	755	909	4,663	89	0	0	0	0	0	0	6,416
SEI	0	0	61,795	10,538	2,996	10,732	5,556	0	3,265	0	94,882
Other	834	10,692	33,324	7,637	4,263	105,178	6,148	692	805	3,342	172,915
TOTAL	43,875	491,296	527,990	61,620	25,404	154,482	47,098	692	16,199	76,437	1,445,093
VP Academic Services	0	0	1,701	0	0	0	0	0	0	0	1,701
VP Business Aff. & Planning											
Campus Services	0	0	12,700	335	36,766	0	18,319	326	1,718	0	70,164
PP-Fac & Adm.	0	0	9,314	1,066	866	600	38,271	0	20,503	0	70,620
Other	5,301	0	15,813	1,011	591	58	909	0	0	0	23,683
TOTAL	5,301	0	37,827	2,412	38,223	658	57,499	326	22,221	0	164,467
VP Development	0	0	10,023	591	0	0	1,271	0	0	0	11,885
VP Enrollment											
Registrar Classrooms	60,854	0	0	0	0	0	0	0	0	0	60,854
Other	0	42	37,059	10,877	8,272	1,873	34,763	504,648	73,584	122,500	793,618
TOTAL	60,854	42	37,059	10,877	8,272	1,873	34,763	504,648	73,584	122,500	854,472
VP University Relations	0	0	5,736	313	0	0	1,480	0	5,696	0	13,225
Technology Transfer	0	0	963	0	0	0	0	0	0	0	963
Total CMU	110,030	491,338	624,821	76,807	71,899	157,013	142,121	505,666	117,831	198,937	2,496,463
NON-CMU Occupant	0	0	574	7,534	70	0	52,731	0	73,473	0	134,382
Total Net Assign. Space	110,030	491,338	625,395	84,341	71,969	157,013	194,852	505,666	191,304	198,937	2,630,845
Building Support	0	0	0	0	0	65	0	0	923,539	72,807	996,411
TOTAL	110,030	491,338	625,395	84,341	71,969	157,078	194,852	505,666	1,114,843	271,744	3,627,256

Note: Other Provost includes Administrative functions as well as University Controlled space.

CARNEGIE MELLON UNIVERSITY

TOTAL SPACE IN SQUARE FOOTAGE
BY MAJOR DIVISION, COLLEGE/DIVISION, AND BUILDING
AS OF JUNE 30, 1996

See Appendix page 94 for Building titles.

Major Division	Building													
	Baker/ Porter	Building D	College of Fine Arts	Cyert	Doherty	Elliot Dunlap Smith	Field and Mobile Robotics	4702 Forbes Ave.	GSIA	Gym	Hamburg	Hammer- schlag	Hunt Library	Margaret Morrison Carnegie
President	109	0	0	0	0	0	0	0	0	0	1,313	0	0	0
Provost														
CIT	43,059	971	0	2,119	54,133	0	0	0	0	0	17,403	74,697	0	0
CFA	5,233	0	83,300		36,427	0	0	3,221	0	0	0	0	0	62,555
H&SS	77,081	0	0	0	0	0	0	0	0	0	0	0	0	7,937
MCS	0	0	0	0	44,712	0	0	0	0	0	0	0	0	0
SCS	0	22,480	0	8,948	10,657	14,700	12,512	0	0	0	0	0	0	0
GSIA	0	0	0	0	0	0	0	0	65,129	0	0	0	0	0
HNZ	0	0	0	0	0	0	0	0	0	0	25,943	0	0	0
CMRI	0	0	0	0	0	0	0	0	0	0	0	0	0	0
INI	0	0	0	0	0	0	0	0	0	0	6,416	0	0	0
SEI	0	0	0	0	0	0	0	0	0	0	0	0	0	0
Other	5,169	9,229	1,344	24,557		148	211	1,427	290	0	7,443	0	78,286	0
TOTAL	130,542	32,680	84,644	35,624	145,929	14,848	12,723	4,648	65,419	0	57,205	74,697	78,286	70,492
VP Academic Services	0	0	0	1,701	0	0	0	0	0	0	0	0	0	0
VP Business Aff. & Planning														
Campus Srv's	5,274	2,382	30	161	10	0	0	2,341	50	20	30	83	10	79
PP Fac. & Adr	3,335	93	1,828	353	1,148	41	48	86	575	495	859	413	302	4,407
Other	0	1,243	0	4,085	0	0	0	0	0	0	0	0	0	0
TOTAL	8,609	3,718	1,858	4,599	1,158	41	48	2,427	625	515	889	496	312	4,486
VP Development	0	0	0	0	0	0	0	0	0	0	0	0	0	0
VP Enrollment														
Classrooms	20,730	0	2,905	0	11,637	0	0	2,057	0	0	5,808	1,860	0	2,662
Housing	0	0	0	0	0	0	0	0	0	0	0	0	0	0
Athletics	0	0	0	0	0	0	0	0	0	55,183	0	0	0	0
Other	588	2,254	0	596	0	0	0	19,369	0	0	4,505	510	0	1,524
TOTAL	21,318	2,254	2,905	596	11,637	0	0	21,426	0	55,183	10,313	2,370	0	4,186
VP University Relations	0	0	0	0	0	0	0	0	0	0	0	0	0	0
Technology Transfer	0	0	0	0	0	0	0	0	0	0	0	0	0	0
Total CMU	160,578	38,652	89,407	42,520	158,724	14,889	12,771	28,501	66,044	55,698	69,720	77,563	78,598	79,164
NON-CMU Occupant	0	1,877	0	728	0	0	0	5,157	0	0	0	0	0	0
Total Net Assignable Space	160,578	40,529	89,407	43,248	158,724	14,889	12,771	33,658	66,044	55,698	69,720	77,563	78,598	79,164
Building Support	67,924	10,380	35,535	19,416	58,348	2,639	10,780	7,372	40,742	7,666	32,228	36,985	22,904	29,790
TOTAL	228,502	50,909	124,942	62,664	217,072	17,528	23,551	41,030	106,786	63,364	101,948	114,548	101,502	108,954

Note:

Other building includes Bramer House, Studio Theatre, West Garages, Alumni Hse, Bushy Run Facilities, Owned Trailers, East Garage, Gesting Field, 407 South Craig and the MM-C Plaza.

Other Provost includes Administrative functions as well as University Controlled space.

CARNEGIE MELLON UNIVERSITY

TOTAL SPACE IN SQUARE FOOTAGE
BY MAJOR DIVISION, COLLEGE/DIVISION, AND BUILDING
AS OF JUNE 30, 1996

See Appendix page 94 for Building titles.

Major Division	Building														TOTAL	
	Mellon Inst.	Penn Ave.	Physical Plant	Planet-ary Rob.	Pgh. Tech. Center	Pub. and Print.	Scaife	Warner	Wean	Whit-field	Other	Housing	LEASED			
													SEI	Other		
President	0	0	0	0	0	0	0	3,235	0	0	0	0	0	0	0	4,657
Provost																
CIT	0	0	0	0	0	0	20,035	0	27,957	0	1,564	0	0	495	242,433	
CFA	0	0	0	0	0	0	0	0	195	0	3,636	0	0	700	195,267	
H&SS	9,801	0	0	0	0	0	0	0	0	0	3,736	0	0	0	98,555	
MCS	145,523	0	1,286	0	0	0	0	0	50,433	0	0	0	0	0	241,954	
SCS	0	0	0	6,140	0	0	0	0	81,777	0	0	0	0	67,900	225,114	
GSIA	0	0	0	0	0	0	0	0	0	0	0	0	0	0	65,129	
HNZ	0	0	0	0	0	0	0	0	0	0	0	0	0	0	25,943	
CMRI	5,431	18,376	0	0	47,839	0	0	0	839	0	0	0	0	4,000	76,485	
INI	0	0	0	0	0	0	0	0	0	0	0	0	0	0	6,416	
SEI	0	0	0	0	0	0	0	0	0	0	0	0	94,882	0	94,882	
Other	13,675	1,723	0	0	533	0	0	3,913	18,931	68	2,334	0	292	3,342	172,915	
TOTAL	174,430	20,099	1,286	6,140	48,372	0	20,035	3,913	180,132	68	11,270	0	95,174	76,437	1,445,093	
VP Academic Services	0	0	0	0	0	0	0	0	0	0	0	0	0	0	1,701	
VP Business Affairs & Planning																
Campus Srv's	4,822	21,605	990	0	133	10	20	830	572	10	30,702	0	0	0	70,164	
PP- Fac & Adm.	7,977	263	28,024	0	811	0	401	102	2,698	332	4,559	10,983	487	0	70,620	
Other	0	0	0	0	0	0	0	2,315	0	3,776	12,264	0	0	0	23,683	
TOTAL	12,799	21,868	29,014	0	944	10	421	3,247	3,270	4,118	47,525	10,983	487	0	164,467	
VP Development	0	0	0	0	0	0	0	5,431	0	0	6,454	0	0	0	11,885	
VP Enrollment																
Registrar	1,125	0	0	0	0	0	4,939	1,733	5,398	0	0	0	0	0	60,854	
Housing	0	0	0	0	0	0	0	0	0	0	540,941	0	120,100	661,041		
Athletics	0	0	0	0	0	0	0	0	0	0	16,180	0	2,400	73,763		
Other	160	0	584	904	176	0	0	14,552	0	0	13,092	0	0	0	58,814	
TOTAL	1,285	0	584	904	176	0	4,939	16,285	5,398	0	29,272	540,941	0	122,500	854,472	
VP University Relations	313	0	0	0	0	9,254	0	0	0	0	3,658	0	0	0	13,225	
Technology Transfer	0	0	0	0	0	0	0	963	0	0	0	0	0	0	963	
Total CMU	188,827	41,967	30,884	7,044	49,492	9,264	25,395	33,074	188,800	4,186	98,179	551,924	95,661	198,937	2,496,463	
NON-CMU Occupant	22,087	53,384	0	0	0	0	0	0	0	4,456	46,491	0	202	0	134,382	
Total Net Assignable																
Space	210,914	95,351	30,884	7,044	49,492	9,264	25,395	33,074	188,800	8,642	144,670	551,924	95,863	198,937	2,630,845	
Building Support	138,705	4,018	13,173	268	30,948	1,054	10,689	12,249	104,952	3,390	23,008	160,943	37,498	72,807	996,411	
TOTAL	349,619	99,369	44,057	7,312	80,440	10,318	36,084	45,323	###	12,032	###	###	###	###	3,627,256	

Note:

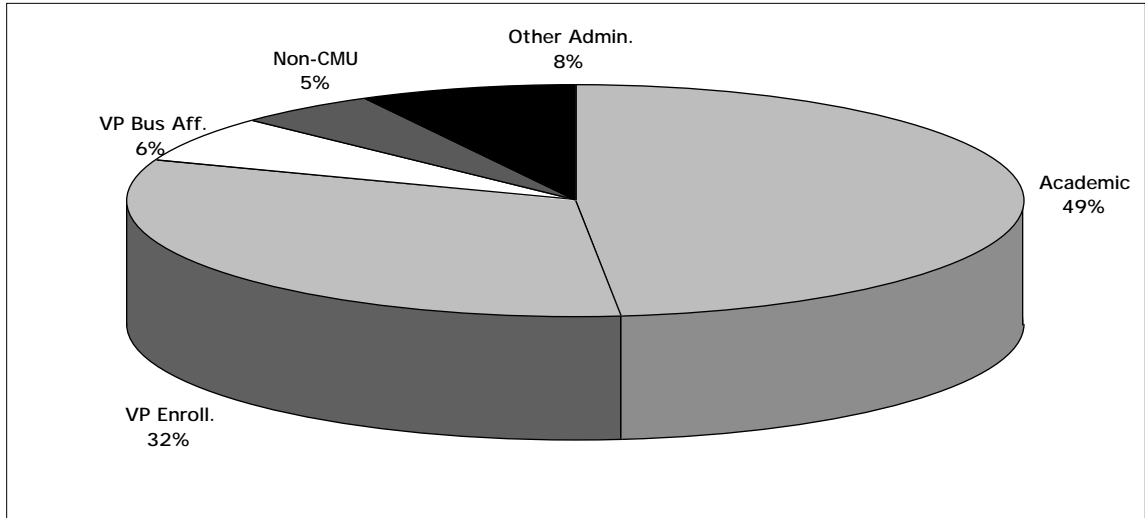
Other buildings include Bramer House, Studio Theatre, West Garages, Alumni Hse, Bushy Run Facilities, Owned Trailers, East Garage, Gesling Field, 407 South Craig and the MM-C Plaza.

Other Provost includes Administrative functions as well as University Controlled space.

CARNEGIE MELLON UNIVERSITY

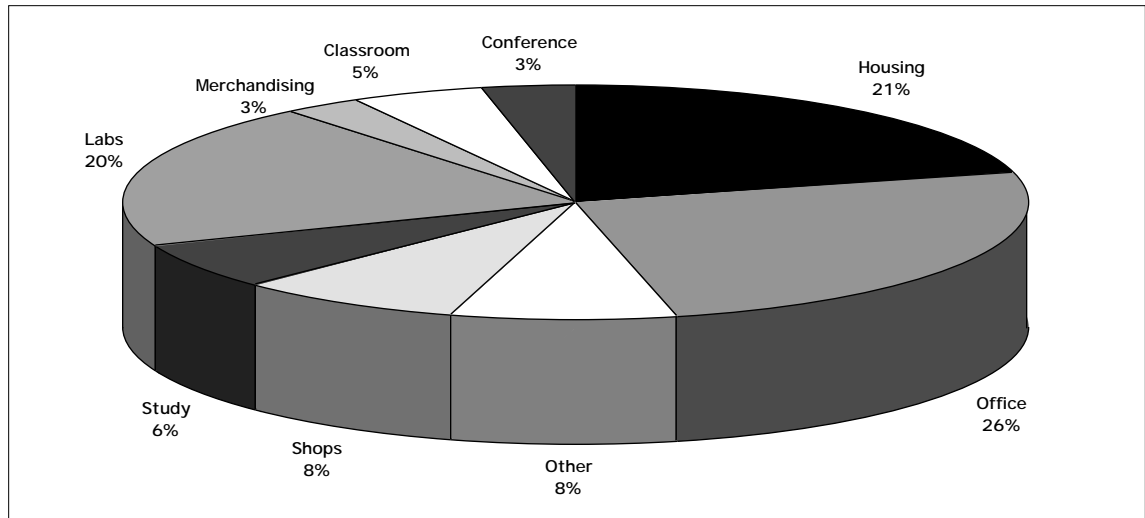
NET ASSIGNABLE SPACE BY MAJOR USE AND DIVISION
AS OF JUNE 30, 1996

Net Assignable Space by Major Division



*Other Admin: President, Provost Administrative Functions, Development and Public Relations

Net Assignable Space by Major Use



CARNEGIE MELLON UNIVERSITY

PARKING CAPACITY
FISCAL YEARS 1994 to 1997

	FY 1994	FY 1995	FY 1996	FY 1997
	Spaces	Spaces	Spaces	Spaces
Permit Parking	2,214	2,242	2,114	2,106
Visitor Parking	33	33	28	28
Meter Parking	213	231	168	150
Utility Parking	15	15	15	25
Campus Street	301	301	301	301
CMU Area Total	2,776	2,822	2,626	2,610
Total Permits Issued	2,621	2,553	2,416	2,318

HOUSING CAPACITY
BY UNITS, BEDS AVAILABLE, AND FILLED
FALL SEMESTER 1996

	Rooms Available	Beds Available	Beds Filled
Boss	42	72	72
Cathedral Mansions	73	166	166
Dakota Apartments	6	9	9
Devon Towers	9	22	22
Doherty	57	156	155
Donner	136	254	253
Fairfax Apts.	56	112	111
Fraternities	233	466	340
Hammerschlag	89	168	166
Henderson	18	40	40
McGill	42	72	72
Mar. Morr. Apts.	24	112	112
Mar. Morr.S. I. Houses	4	32	29
Marybelle Apts.	18	36	36
Morewood Gardens Apts.	12	36	36
Morewood Gardens	342	681	681
Mudge	165	313	313
Pennsylvania Apts.	4	10	10
Resnik	91	151	151
Roselawn	11	55	55
Scobell	62	88	88
Sororities	40	80	80
Shirley Apts.	22	41	41
Spirit House	1	8	8
Tech House	1	6	5
Webster Hall	38	87	85
Welch	30	54	54
West Wing	87	147	147
Woodlawn	7	31	31
Total	1,720	3,505	3,368

APPENDIX

CARNEGIE MELLON UNIVERSITY

I. COLLEGE AND DEPARTMENT LISTING

College	Department/Unit	Abbreviation	Notes
CARNEGIE INSTITUTE OF TECHNOLOGY		CIT	Undergraduate and Graduate College.
PROGRAMS:			
	Biomedical Engineering	Biomedical E.	
	Chemical Engineering	Chemical E.	
	Civil Engineering	Civil E.	
	Electrical and Computer Engineering	E & C E.	
	Engineering and Public Policy	EPP	
	Mechanical Engineering	Mechanical E.	
	Materials Science and Engineering	MSE	
	Engineering Design Research Center	EDRC	Research Center
ADDITIONAL UNITS:			
	No Major Department	No Major Dept.	Students do not declare majors until their sophomore year.
	Interdisciplinary	Interdiscp.	Interdisciplinary units are jointly taught among departments.
	Dean's Office	Dean's Ofc.	Some faculty with administrative responsibility are located in the the Dean's office.
	University Choice Program	Univ. Choice	
COLLEGE OF FINE ARTS		CFA	Undergraduate and Graduate College.
PROGRAMS:			
	Architecture		
	Art		
	Design		
	Drama		
	Music		
	Studio for Creative Inquiry	SFCI	Research Center
ADDITIONAL UNITS:			
	Interdisciplinary	Interdiscp.	Interdisciplinary units are jointly taught among departments.
	Dean's Office	Dean's Ofc.	Some faculty with administrative responsibility are located in the Dean's office.
	Pre-College Art	Pre-Col. Art	Year-round program for pre-college art students and CMU students who are not art majors.
	Pre-College Music	Pre-Col. Mus.	Year-round program for pre-college music students and CMU students who are not music majors.
	Humanities and Arts	BHA	Students may now participate in a degree program combining humanities and arts curriculum
COLLEGE OF HUMANITIES AND SOCIAL SCIENCES		H&SS	Undergraduate and Graduate College.
PROGRAMS:			
	English		
	History		
	Modern Languages		
	Philosophy		
	Psychology		
	Social and Decision Sciences	S & D S.	
	Statistics		

CARNEGIE MELLON UNIVERSITY

College Department/Unit	Abbreviation	Notes
H&SS (cont.)		
ADDITIONAL UNITS:		
Economics Student Defined Major	Student Def'd	The student major Economics is housed in H&SS. Some students in H&SS define individualized
No Major Department Dean's Office	No Major Dept. Dean's Ofc.	Students do not declare majors until their junior year. Some faculty with administrative responsibility are located in the the Dean's office.
University Choice Program	Univ. Choice	
INFORMATION NETWORKING INSTITUTE	INI	Joint academic program between CIT, GSIA, and SCS.
MELLON COLLEGE OF SCIENCE	MCS	Undergraduate and Graduate College.
PROGRAMS:		
Biological Sciences	Biology	
Chemistry		
Mathematics	Math	
Physics		
ADDITIONAL UNITS:		
No Major Department	No Major Dept.	Students do not declare majors until their sophomore year.
Dean's Office	Dean's Ofc.	Some faculty with administrative responsibility are located in the Dean's office.
Interdisciplinary	Interdiscp.	Interdisciplinary units are jointly taught among departments.
University Choice Program	Univ. Choice	
SCHOOL OF COMPUTER SCIENCE	SCS	Undergraduate and graduate college.
PROGRAMS:		
Computer Science	Comp. Sci.	
Math/Computer Science	Math/C.S.	
Robotics	Rob	
Center for Machine Translation	CMT	Research Center
Information Technology Center	ITC	Research Center
Software Engineering	Software Eng.	
Human-Computer Interaction	HCI	
Language Technologies Institu	LTI	
GRADUATE SCHOOL OF INDUSTRIAL ADMINISTRATION	GSIA	Undergraduate and Graduate College.
ADDITIONAL UNITS		
Economics		Most Economics courses are taught by GSIA faculty.
Industrial Management	IM	Most IM courses are taught by GSIA faculty.
THE HEINZ SCHOOL	HNZ	Graduate College.
CARNEGIE MELLON RESEARCH INSTITUTE	CMRI	Research Center.
SOFTWARE ENGINEERING INSTITUTE	SEI	Research Center
ADMINISTRATION	ADMIN	

NOTE:

The category of NON-DEGREE students is often listed as a Department in tables showing student enrollment. These non-degree seeking students are not affiliated with any Department or College (see Students section).

CARNEGIE MELLON UNIVERSITY

II. TIME PERIODS

Fall Semester	Data are as of the 15th day in the Fall Semester (except Units Taught, which are end of semester counts).
Academic Year	Data are the addition of Fall and Spring Semester totals.
Fiscal Year	Data are for the period July 1 to June 30 of the indicated year.

III. DEFINITION OF TERMS

STUDENTS

FRESHMEN

Applied	Individuals who completed the Admissions process.
Admitted	Applicants who were admitted to Carnegie Mellon.
Enrolled	Applicants who were admitted and actually enrolled.
Yield	Enrolled as a percent of Admitted freshmen.

Competing Schools: The top 15 schools to which students admitted to Carnegie Mellon also submitted applications. The source of this data is the Admissions Office Competition Report.

ENROLLMENT

Students by Level		
	Undergraduate	Freshman, Sophomore, Junior, Senior
	Graduate	Students enrolled in Master's or Doctoral programs.
	Non-Degree	Special students who are not enrolled in a degree program.

Headcount Each student, full or part time, is counted once.

Full-Time Equivalent (FTE) Each full-time student is counted once; part-time students are counted based on the percentage of full-time tuition paid to cover their current courses.

HOUSING TYPE

University Housing		
	On-Campus	CMU owned dormitories physically located on the campus.
	Off-Campus	CMU controlled off-campus housing.
	Fraternity/Sorority	Fraternity or Sorority controlled housing.
Non-University Housing		All other student residence arrangements.

PERSISTENCE

The percentage of students from an entering cohort who are enrolled in a particular year plus those who have graduated.

DEGREES

Bachelors	B.A., B.S., BFA, B.H.A, B.Arch.
Masters	M.A., M.S., M.E., MFA, M.A.M., M.P.M, M.S.I.A.
Doctorates	D.A., Ph.D.

All degrees are shown by the Department from which they were earned, rather than the particular program or emphasis listed on the individual's degree. All degree programs are listed in the front of this booklet.

RACE

NRA-Non-Resident Aliens, AI/AN-American Indian/Alaskan Native, A/PI-Asian/Pacific Islander, Hisp.-Hispanic and Unkn.-Unknown

CARNEGIE MELLON UNIVERSITY

TEACHING

UNITS

A student at CMU earns a specified number of units for each course taken at the University. Three (3) units are the equivalent of one (1) credit hour. The total units taught by a department is calculated by summing the units taken by each student for each course taught by the department.

Other Includes units taught to Non-Degree students and students from other colleges attending CMU through the Pennsylvania Council of Higher Education (PCHE) agreement.

STAFF

Full-time employees includes those on leave and visiting research professionals. Visiting faculty are excluded.

FACULTY

Total Faculty includes three categories of faculty members. They are:

Tenure/Tenure-Track Faculty	Tenure/Tenure-Track faculty are comprised of four ranks of permanent faculty members (subject to the rules of the tenure process): Professor, Associate Professor, Assistant Professor, and Instructor. Professors and some Associate Professors are tenured; the rest of the Associate Professors and Assistant Professors are eligible for tenure, or in the Tenure Stream; and Instructors are eligible for promotion into the tenure stream. Instructors are part of the regular faculty for whom the tenure probationary period has not yet begun.
Research Faculty	Research faculty are comprised of several ranks of faculty-equivalent research positions of scientists and engineers.
Lecturer Faculty	Lecturer faculty are comprised of several ranks of permanent faculty members including Lecturers, Senior Lecturers, and Principal Lecturers. The primary duty of Lecturer faculty is teaching. Lecturer faculty members are not eligible for tenure or tenure-track status.
Special Faculty	Special faculty are comprised of several ranks of part-time or temporary, instructional, and research faculty including active Faculty Emeriti, Adjunct Faculty, Instructional Staff, Visiting Faculty, Special Research Faculty, and Post-Doctoral Associates. Administrators with Special Faculty appointments are excluded.
Method of counting:	Regular and Research faculty may have contractual joint appointments in one or more departments, and are split between these appointments accordingly.
Terminal degree	Terminal degrees are typically recognized in a field as the highest level of education attainable. Professional fields often have terminal degrees that are not PhD's, e.g.MFA for studio/performance, DA (doctorate of Arts)and Dri (Dr. of engineering from Italy).

ALUMNI

Includes all living persons who attended the university as degree candidates.

FINANCES

TUITION AND FEES

Undergraduate Tuition	Tuition charged to full-time undergraduate students. This is established at the university level.
Graduate Tuition	Tuition charged to full-time graduate students. This is established by each college.
Average Room	The annual charge for a standard double room. Other options for university housing include: Standard and Prime rooms for one, three or four students, and several apartment, townhouse or separate house alternatives.

CARNEGIE MELLON UNIVERSITY

TUITION AND FEES (cont.)

Average Board	12 Meals per Week + \$170 per Semester Declining Balance.
Total Estimated Cost of Attending CMU.	This includes tuition and activities fee, books and supplies, incidentals, room and board for residents and lunches and transportation for Commuters. This is computed each year by the Financial Aid Office.

UNDERGRADUATE FINANCIAL AID RESOURCES

Federal Aid	PELL SEOG	Federal entitlement grant program. Supplemental Education Opportunity Grant.
State Aid	PHEAA	Pennsylvania Higher Education Assistance Agency.
Other State Aid		Aid from states other than Pennsylvania.
CMU E&GO		Aid provided from Carnegie Mellon Educational and General Operating Expenses.
CMU Endowed		Aid provided from income from the Carnegie Mellon University Endowment Fund.
CMU Gifts & Grants		Aid provided through gifts and grants to the University for this purpose.
ROTC		Money from the Air Force, Army and Navy ROTC programs.
Other Grant Resources		Aid from all other sources, primarily scholarships.

GENERAL FUNDS INCOME, EXPENDITURES, AND TRANSFERS

GENERAL FUNDS	These funds are divided into Unrestricted Funds that can be used for any University purpose, Designated Funds that have been set aside for particular purposes such as the Summer School program, and Restricted Funds which have been given for a specific purpose, such as research projects by the donor or granting agency. The General Funds support teaching, research, support programs, student services, student aid, administrative and business operations, physical plant operations and maintenance and public service.
---------------	--

INCOME

Tuition & Fees	Payments made by undergraduate, graduate and special students in accordance with University tuition and fee schedule
Endowment Income	Income derived from endowment investments
Gifts and Grants	Restricted and unrestricted gifts given to the university.
Sponsored Research	Restricted income given for a specific research project by the donor or granting agency.
Auxiliary Services	Income from Auxiliary Services (i.e., housing, food services, parking.)
Misc. Income	Includes interest on operating funds and reserve holdings, interest on university internal loans and miscellaneous charges.

EXPENDITURES

Instruction & Dept. Research Carnegie Mellon Research Institute	Expenditures supporting the academic programs and operations in the colleges. Expenditures from Carnegie Mellon Research Institute.
Academic Support	Includes: Audio Visual Aids and Computing and Info Services.
Sponsored Research	Expenditures from restricted funds for research.
Student Aid	Restricted and unrestricted aid supporting undergraduates.
Libraries	Expenditures from the libraries.
Campus Operations	Operation and maintenance of physical plant.
Utilities	Expenditures for utilities and steam.
Administration	Expenses supporting administrative units.
Student Services	Includes Enrollment Planning, Athletics and Student Affairs.

CARNEGIE MELLON UNIVERSITY

EXPENDITURES (cont.)

General Institutional	Includes insurance, legal and investment agent fees.
Auxiliary Services	Expenditures for the operation of Auxiliary Services units.
Total Transfers	Includes transfers to capital, debt service, and college reserves.

RESEARCH COSTS

In the listing by College and Research Center,
Other includes: Academic Computing, Computing Systems, Hunt Institute for Botanical Documentation, Center for the Design of Educational Computing, Office of the Provost, Office of the Vice President for Enrollment and General Institutional.

VOLUNTARY SUPPORT

Voluntary Support Contributions : Contributions supporting the University, excluding: income from endowment and other invested funds, and support from federal, state and local governments and their agencies.

TUITION BENEFITS

Money paid to CMU faculty, staff and their dependents to take courses at CMU or other universities.

SPACE AND FACILITIES

USE CATEGORIES

Classroom	Includes all rooms used for classrooms.
Laboratory/Studio	Includes laboratory and studio facilities, used both as classrooms and for research.
Office	Includes offices, office support areas and office-related conference rooms.
Other	Includes Special Use Facilities (e.g. the gym), General Use Facilities (e.g., lounge or dining facilities), Support Facilities (e.g. computer, shop and storage rooms) and Health Care Facilities.
Building Support	Includes circulation, mechanical and structural areas.
Univ. Controlled	Represents primarily public spaces which are not under the control of any individual department, as well as unassigned space held in reserve by the university to allow for future departmental expansion, or for temporary allocation during renovations.