

Carnegie Mellon Facts 1995

Volume 9

Richard J. Hall, Editor
University Planning and Budget
Carnegie Mellon University
February 1995

Foreword

Carnegie Mellon Facts is a compilation of commonly requested data and statistical information about Carnegie Mellon. It includes information about students, alumni, faculty and staff at CMU. You can use *Facts* to find information on admissions, enrollment, teaching, research and University finances and facilities. *Facts* also provides some useful comparative data from other universities. The data presented in the tables and graphs are from internal sources except where noted. The terms used are defined in the Appendix.

Carnegie Mellon Facts is intended primarily as an internal document, produced annually for use by members of the campus community. We encourage you to keep this book handy and to use it as a reference. This publication is also available in electronic form on the Planning and Budget server located on the macintosh network in the Craig Street Zone.

We in University Planning Services want this book to be a reliable source of accurate and useful information. Your suggestions and comments on the contents, format and usefulness of *Facts* will help with the continual improvement of this information tool. Please respond to the brief questionnaire enclosed for your use. Or, call University Planning at 268-8729 if you have questions or suggestions for improving the report.

Thank you.

Kevin Lamb
Director
University Planning Services

Acknowledgments

University Planning and Budgets is grateful to individuals from the following departments for providing information for the 1995 Fact Book.

Accounting
Alumni Relations
Computing Services
Dean's Office - Carnegie Institute of Technology
Dean's Office - College of Fine Arts
Dean's Office - College of Humanities and Social Science
Dean's Office - Mellon College of Science
Graduate School of Industrial Administration
Housing System
Human Resources
Instructional Technology
Office of the Controller
Office of the Provost
Records
Registrar's Office
School of Computer Science
The Heinz School
University Libraries
University Relations
University Teaching Center

[\[Top of this page\]](#) [\[Fact Book Main Page\]](#) [\[Next Section: History, Mission, and Organization\]](#)

Last update: 8/18/95

CMU History, Mission, and Organization

CONTENTS

[The University.](#)

[Vision.](#)

[Mission Statement.](#)

[Our Values and Traditions.](#)

[Degree Programs By College and Department, 1994-95.](#)

[Research Centers, Institutions and Groups by Academic, Research, or Other Units.](#)

[Endowed and Named Professors by College.](#)

[Accreditations By College and Department, Fall 1994.](#)

The University

Carnegie Mellon has emerged as one of the nation's leading private research universities. The university's interdisciplinary approach provides graduates with professional and technical skills and a strong science and liberal arts background. According to Edward B. Fiske, former education columnist for the New York Times, Carnegie Mellon's "faculty and administration have done the most original thinking of any American university in pursuing the twin goals of liberal-professional education."

Carnegie Mellon began in 1900 when industrialist Andrew Carnegie founded Carnegie Technical Schools in Pittsburgh's Oakland section. Twelve years later these schools became a degree-granting college---the Carnegie Institute of Technology. In 1967, Carnegie Tech merged with the Mellon Institute of Research to form Carnegie Mellon University.

Carnegie Mellon's internationally recognized programs encompass the areas of engineering, technology, science, liberal arts, fine arts, and public and private management. The university includes four undergraduate colleges and three graduate schools:

The Carnegie Institute of Technology (CIT) includes six departments: Chemical Engineering, Civil, and Environmental Engineering, Electrical and Computer Engineering, Engineering and Public Policy, Mechanical Engineering, and Metallurgy and Materials Science, plus a program in Biomedical Engineering.

The College of Fine Arts (CFA), the first school in the nation to award a degree in drama , includes the departments of Architecture, Art, Design, Drama and Music.

The College of Humanities and Social Sciences (H&SS) is recognized for its broad view of the liberal-professional arts and its commitment to excellence in teaching. Its departments include Economics, English, History, Modern Languages, Philosophy, Psychology, Social and Decision Sciences, and Statistics.

The Mellon College of Science (MCS) is composed of the departments of Biological Sciences, Chemistry, Mathematics and Physics.

The Graduate School of Industrial Administration (GSIA) offers a Master of Science in Industrial Administration, a degree roughly equivalent to an M.B.A. with a firmer scientific component based on the use of quantitative methods as management tools. GSIA also offers doctoral and executive education programs and now administers undergraduate programs in economics and industrial management.

The School of Computer Science (SCS) operates at the forefront of research in computing, artificial intelligence, machine translation and robotics. The school grants doctor's degrees in computer science and robotics, a master's degree in software engineering and an undergraduate degree.

The Heinz School (HNZ) offers graduate programs to educate managers and analysts for government and non-profit organizations; it awards master's degrees in Public Management and Policy, Arts management and a doctor's degree in Public Policy Analysis.

Vision

Carnegie Mellon will lead educational institutions by building on its traditions of innovation and transcending disciplinary boundaries to meet the changing needs of society.

Mission Statement

To create and disseminate knowledge and art through research and artistic expression, teaching and learning, and transfer to society.

To serve our students by teaching them leadership and problem-solving skills, and our values of quality, ethical behavior, responsibility to society and commitment to our work.

To pursue the advantages provided by a diverse community, open to the exchange of ideas, where discovery and artistic creativity can flourish.

Our Values and Traditions

Leadership: We lead through innovation and excellence; we establish new directions by talent and example, influencing the behavior of other institutions.

Innovation: We identify challenges and opportunities presented by evolving human needs, new research methods and technologies, and promptly assemble the talent and resources needed to exploit them. Our innovative capability is one of the foundations upon which our leadership capacity is built.

Transcending Disciplinary Boundaries: We function seamlessly and transcend traditional disciplinary boundaries to our comparative advantage.

Responsibility to Society: We serve society through transfer of technology, continuing education programs, public service and enrichment of the community through the arts.

Learning: We will build on our heritage of the Carnegie Plan to become a leading institution that combines first-rate research with outstanding undergraduate education through our focus on learning and problem-solving.

Dedication to our Work: Our students, staff and faculty are committed to our heritage emblazoned on our seal: "My Heart is in the Work."

Commitment to Quality: We focus our energies on understanding the needs of the communities we serve while applying principles of self-evaluation, benchmarking and continuous improvement to fulfill these needs.

Degree Programs By College and Department Academic Year 1994-1995

CARNEGIE INSTITUTE OF TECHNOLOGY

Biomedical Engineering

Electrical and Computer

Engineering

B.S.	Engineering (Bioengineering Option)	B.S.	Computer E.
B.S.	Bioengineering with CIT Department	M.S.	Electrical E.
B.S.	Bioengineering	M.S.	Electrical and Computer E.
M.S.	Bioengineering with CIT Department	Ph.D.	Electrical and Computer E.
Ph.D.	Bioengineering	Ph.D.	

Mechanical Engineering
Mechanical E.

Chemical Engineering

B.S.	Chemical E.	B.S.
M.E.	Chemical E.	M.S.
M.S.	Chemical E.	Ph.D.
Ph.D.	Colloids, Polymers, & Surfaces (Interdisciplinary w/ MCS)	M.S.

Materials Science and

Engineering

B.S.		MSE
M.E.	Civil and Environmental Engineering	MSE
M.S.	Civil E.	MSE
Ph.D.	Civil E.	MSE
Ph.D.	Civil E.	Ph.D.

Manufacturing Engineering
Manufacturing Engineering

Engineering and Public Policy

M.M.E.	Engineering Major & EPP	B.S.
	EPP	M.S.
	Engineering Major & EPP	M.S.
	EPP	Ph.D.

COLLEGE OF HUMANITIES AND SOCIAL SCIENCES

B.A.	Humanities and Arts	B.H.A.	Modern Languages French
B.A.	(jointly w/CFA)		German
B.A.			Spanish
B.A.	Economics	B.A.	Philosophy
B.A.	Economics	B.S.	Philosophy
B.S.	Managerial Economics	B.S.	Logic & Computation
			Computational Linguistics

B.S.	English		Logic & Computation
M.S.	Literary & Cultural Studies	B.A.	Computational Linguistics
M.S.	Creative Writing	B.A.	Computational Linguistics
Ph.D.	Professional Writing	B.A.	Pure & Applied Logic (with
Ph.D.	Rhetoric	B.A.	Comp. Science &
Mathematics)	Technical Writing	B.S.	
	English	M.A.	Psychology
	Professional Writing	M.A.	Psychology
B.A.	Literary & Cultural Theory	Ph.D.	Psychology
B.S.	Rhetoric	Ph.D.	Cognitive Science
B.S.			Psychology
Ph.D.	History		
	Social History	B.A.	Social and Decision Sciences
	Social History	B.S.	Social and Decision Sciences
B.S.	History and Policy	B.A.	Information & Decision Systems
B.S.	History and Policy	B.S.	Policy and Management
B.S.	Anthropology and History	B.A.	Polical Science
B.S.	Anthropology and History	B.S.	Social and Decision Sciences
Ph.D.	European Studies (Double Major)	B.A.	
	Social History	M.A.	Statistics
	History and Policy	M.S.	Statistics
B.S.	Social History	Ph.D.	Statistics
M.S.	History and Policy	Ph.D.	Statistics
Ph.D.			
	Student Defined	B.A.	
	Student Defined	B.S.	

COLLEGE OF FINE ARTS

	Humanities and Arts (jointly w/H&SS)	B.H.A.	Drama Drama
B.F.A.	Master of Arts Management	M.A.M.	Costume Design
M.F.A.	(w/SUPA)		Directing
M.F.A.			

Lighting Design

M.F.A.	Architecture		Playwriting
M.F.A.	Architecture	B.Arch.	Production
M.F.A.	Architecture	M.S.	Scene Design
M.F.A.	Architecture	Ph.D.	Acting
M.F.A.			
	Art		Music
B.F.A.	Art	B.F.A.	Music (Composition)
B.F.A.	Art	M.F.A.	Music Performance
			Performance
M.M.	Design		Composition
M.M.	Graphic Design	B.F.A.	Conducting
M.M.	Industrial Design	B.F.A.	
	Communication Design	B.F.A.	
	Communication Planning and Design w/English	M.A.	
	Visual Communication & Product Design	M.Des	

MELLON COLLEGE OF SCIENCE

Mathematics

Biological Sciences			
Mathematics	B.S.		
Biological Sciences		B.S.	Applied
Mathematics	B.S.		
Biological Sciences/Comp. Sci. Track		B.S.	(Operations Research)
Biological Sciences & Humanities or (Statistics)	B.S.	B.A.	Applied Mathematics
Social Science			
Mathematics	M.S.		
Biological Sciences		Ph.D.	Applied
Mathematics	M.S.		
Biological Sciences/Biochemistry		Ph.D.	Science & Computational
Finance	M.S.		
(w/Chemistry and Physics)			(w/GSIA, SCS and Statistics)
Biological Sciences/Biophysics		Ph.D.	
Mathematics	D.A.		
(w/Chemistry and Physics)			
Mathematics	Ph.D.		
Biological Sciences/Biochemistry and Biophysics (w/ Chemistry & Physics)		Ph.D.	Algorithms, Combinatorics & Optimization (w/Comp. Sci., GSIA) Ph.D.
			Mathematical Finance (w/

GSIA)	Ph.D.		Pure & Applied Logic (w/
Computer	Ph.D.		Science and Philosophy)
Chemistry	Chemistry	B.	
A.	Chemistry	B.S.	
	Chemistry/Computer Science Track	B.S.	Physics
	Chemistry	M.S.	
Physics	B.A.		
	Polymer Science	M.S.	
Physics	B.S.		
	Colloids, Polymers, and Surfaces	M.S.	Physics/Computer Science
Track	B.S.		
	(w/ Chemical E.)		
Physics	M.S.		
	Chemistry	Ph.D.	
Physics	Ph.D.		
	Chemistry/Biochemistry	Ph.D.	Applied
Physics	Ph.D.		
	(w/Biology and Physics)		Physics/
Biochemistry	Ph.D.		
	Chemistry/Biophysics	Ph.D.	(w/Biology and Chemistry)
	(w/Biology and Physics)		Physics/
Biophysics	Ph.D.		
	Chemistry/Biochemistry &	Ph.D.	(w/Biology and Chemistry)
	Biophysics (w/Biology and Physics)		Physics/Biochemistry &
Biophysics	Ph.D.		(w/Biology and Chemistry)

GRADUATE SCHOOL OF INDUSTRIAL ADMINISTRATION

H. JOHN HEINZ OF PUBLIC POLICY AND MANAGEMENT

	Industrial Management	B.S.	Public Management &
Policy	M.S.		
	Industrial Administration	M.S.I.A.	Public Management & Policy,
minor	M.S.		
	Industrial Administration, minor in	M.S.	in Business Admin. (w/ GSIA)
	Pub. Management & Policy (w/ SUPA)		Public Management & Policy &
Juris	M.S.		
	Civil Engineering & Management (w/CIT)	M.S.	Doctor (w/ U. of
Pittsburgh)			
	Computational Finance	M.S.	Master of Arts Management (w/
CFA)	M.A.M.		
	(w/HSS, MCS and SCS)		Master of
Philosophy	M.Phil.		
	Software Engineering and Business	M.S.	Master of Public
Management	M.P.M.		
	Mgt (w/SCS)		Public Policy
Analysis	Ph.D.		
	Industrial Administration	Ph.D.	Social Science & Public
Policy	Ph.D.		
	Accounting	Ph.D.	Analysis (w/ S&DS.)
	Algorithms, Combinatorics and	Ph.D.	
	Optimization (w/ Computer Science and		
	Mathematics)		

Economics	Ph.D.
Financial Economics	Ph.D.
Information Systems	Ph.D.
Management of Manufacturing and Automation (w/ Robotics Institute)	Ph.D.
Manufacturing and Operations Systems	Ph.D.
Marketing	Ph.D.
Operations Research	Ph.D.
Organizational Behavior and Theory	Ph.D.
Politics and Political Economy	Ph.D.

SCHOOL OF COMPUTER SCIENCE

Mathematics/Computer Science (w/Mathematics)	B.S.
Software Engineering	M.S.
Algorithms, Combinatorics & Optimization (w/GSIA & Mathematics)	Ph.D.
Computer Science	Ph.D.
Robotics	Ph.D.
Pure & Applied Logic (w/ Philosophy & Mathematics)	Ph.D.

Information Networking Institute

Information Networking (jointly w/GSIA, CIT and SCS)	M.S.
---	------

**Research Centers, Institutions and Groups
By Academic, Research or Other Units
Fall 1994**

ACADEMIC UNITS

CARNEGIE INSTITUTE OF TECHNOLOGY

- Center for Advanced Deformation Processing Research (CADPR)
- Computing Systems Center (CSC)
- Center for Energy and Environmental Studies (CEES)
- Center for Entrepreneurial Development (CED)
- Center for Excellence in Optical Data Processing (CEODP)
- Center for Iron and Steelmaking Research (CISR)
- Center for Solid Waste Management (CSWM)
- Data Storage System Center (NSF/ERC DSSC)
- Engineering Design Research Center (NSF/ERC)
- Environmental Institute
- Gov./Uni./Ind. Consortium Center for Bladed Disk Structures Research & Technology (GUIDE)
- Information Networking Institute (INI)
- Pennsylvania SEMATECH Center of Excellence for Rapid Yield Learning (PA SCOE)
- Program on Innovation, Technology & Economic Growth (PITEG)
- Program on International Peace and Security (IPS)

SRC/CMU Research Center for Computer-Aided Design (SRC/CMU-RC-CAD)

COLLEGE OF FINE ARTS

Center for Building Performance and Diagnostics (CBPD)
Studio for Creative Inquiry (SFCl)
Building Industry Computer-Sided Design Consortium

GRADUATE SCHOOL OF INDUSTRIAL ADMINISTRATION

Carnegie Bosch Institute for Applied Studies in International Management (CBIASIM)
Center for the Management of Technology (CMT)
Center for the Study of Public Policy (CSPP)
Donald H. Jones Center for Entrepreneurship (DHJCE)
Green Design Initiative
Institute for Strategic Development
The Center for Financial Analysis and Securities Trading

HEINZ SCHOOL

Center for Economic Development (HEINZ CED)
Decision Systems Research Institute (DSRI)
Urban Systems Institute (USI)

HUMANITIES AND SOCIAL SCIENCES

Center for Advancement of Applied Ethics (CAAE)
Center for Educational Computing in English (CECE)
Center for History and Policy
Center for the Study of Writing (CSW)
Laboratory for Computational Linguistics (LCL)
Pittsburgh Center for Social History (PCSH) (w/ U. of Pittsburgh)
Statistical Center for Quality Improvement (SCQI)

MELLON COLLEGE OF SCIENCE

Center for Nonlinear Analysis (CNA)
Pittsburgh NMR Center for Biomedical Research (NMRCBR) (w/ U. of Pittsburgh)
Pittsburgh Supercomputing Center (PSC) (w/ U. of Pittsburgh and Westinghouse)
Science & Technology Center for Light Microscope Imaging and Biotechnology (STC)

SCHOOL OF COMPUTER SCIENCE

Center for Machine Translation (CMT)
Human Computer Institute (HCI)
Information Technology Center (ITC)
Robotics Institute (RI)
Field Robotics Center (FRC)
Vision and Autonomous Systems Center (VASC)

CARNEGIE MELLON RESEARCH INSTITUTE (CMRI)

Advanced Devices and Materials Group (AD&MG)
High Technology Center (HTC)
Materials Technology Center (MTC)

Computer, Automation and Robotics Group
Computer Engineering Center (CEC)

Industry Systems Group
Center for Protective Coatings(CPC)
Rail Systems Center (MTC)

High Speed Ground Transportation Center (HSGTC)

Biotechnology Group
Center for Environmental Microbiology (CEM)
Biotechnology Center

Special Programs Group
Center for Materials Production (CMP)
Steel Structure Painting Council (Center for Surfaces & Coatings)
ASTM Engine Test Monitoring Center (ASTMC)
Research Center on the Materials of the Artist and Conversation (CMA&C)

SOFTWARE ENGINEERING INSTITUTE (SEI)

OTHER UNITS

Hunt Institute for Botanical Documentation (HIBD)
University Teaching Center (UTC)

Endowed and Named Professors

By College

Fall 1994

COLLEGE OF FINE ARTS

Andrew Mellon Professor -- Howard Saalman (Emeritus)
Bessie F. Anathan Professor in Fine Arts -- Barbara J. Anderson
Dorothy L. Stubnitz Professor -- Herbert Olds
Nierenberg Professor of Design -- David Smith
Philip Chosky Visiting Professors of Drama -- Jose Meier, Bonnie Walker, Natalie Baker, Geoffrey Hitch
T. David Fitzgibbon Chair in Architecture -- Dennis Neeley

CARNEGIE INSTITUTE OF TECHNOLOGY

Alumni Chair in Environmental Science and Engineering -- Edward Rubin
Buhl Professor of Electrical and Computer Engineering & Computer Science -- Daniel P. Siewiorek
George Tallman Ladd Professor -- Not Filled
George Westinghouse Professor of Engineering -- David Casasent
Mobay Professor in Chemical Engineering (Emeritus) -- Herbert Toor
Posco Professor -- Richard J. Fruehan
Rudolph R. & Florence Dean Professor of Chemical Engineering -- Ignacio E. Grossmann
Theodore Ahrens Professor of Engineering -- J. Fletcher Osterle
U.S. Steel Professor of Metallurgical Engineering & Materials Science (Emeritus) -- Harold W. Paxton
Walter J. Blenko, Sr. Professor of Environmental Engineering -- Francis C. McMichael
William J. Brown Professor Mechanical Engineering -- Norman A. Chigier

GRADUATE SCHOOL OF INDUSTRIAL ADMINISTRATION

David M. & Barbara A. Kirr Professor of Organization -- Gerald R. Salancik
David T. & Lindsay J. Morgenthaler Professor of Entrepreneurship -- John R. Thorne
Ford Foundation Distinguished Professor -- Gerald C. Meyers
Heinz Chair in Graduate School of Industrial Administration -- Bennet T. McCallum
IBM Chair in Information Systems at GSIA -- Gerald L. Thompson
Richard M. Cyert Professor of Management and Economics -- Shyam Sunder
Alumni Professor of Economics and Finance -- Sanjay Srivastava
R.M. and M.S. Cyert Professor of Economics and Management -- Richard M. Cyert

COLLEGE OF HUMANITIES AND SOCIAL SCIENCES

Alumni University Professor of Philosophy -- Clark Glymour
D. O. Hebb Professor of Psychology -- Marcel A. Just
Howard Heinz Professor of the Humanities -- Peter N. Stearns
Lee and Marge Gregg Professor of Psychology -- Patricia A. Carpenter
Leonard J. Savage Professor of Statistics and Social Sciences -- Joseph B. Kadane
Luce Professor of Technology and Social Change -- David W. Hounshell
Maurice Falk Professor of Statistics & Social Sciences -- Stephen E. Fienberg
Richard S. Caliguiri Professor of Urban Studies -- Joel A. Tarr
Thomas Stockham Baker Professor of English and Interdisciplinary Studies -- Richard E. Young
Walter VanDyke Bingham Professor of Psychology and Computer Science -- John R. Anderson

MELLON COLLEGE OF SCIENCE

Alumni Professor of Biological Sciences -- Chien Ho
Buhl Professor of Theoretical Physics -- Not Filled
Eberly Family Chair of Biological Sciences -- Not Filled
Lord Professor of Chemistry -- Not Filled
Otto Stern Professor of Physics -- Robert B. Griffiths
Alumni Chair of Mathematics -- Morton E. Gurtin

SCHOOL OF COMPUTER SCIENCE

Alan J. Perlis Professor of Computer Science -- Not Filled
U.A. & Helen Whitaker Professor of Computer Science -- Takeo Kanade
Finnmecnica Professor of Computer Science -- Guy Blelloch
Herbert A. Simon University Professor of Computer Science and Robotics -- Raj Reddy

H. JOHN HEINZ III SCHOOL OF PUBLIC MANAGEMENT & POLICY

Henry J. Heinz, II Professor of Urban Studies -- Not Filled
J. Erik Jonsson Professor of Urban Systems and Operations Research -- Alfred Blumstein

CARNEGIE MELLON UNIVERSITY

Alumni University Professor of Industrial Administration and Applied Mathematics -- Egon Balas
Gulf Oil Foundation Chair in Engineering -- John Anderson
Herbert A. Simon University Professor of Computer Science -- D. Raj Reddy
Hillman University Professor of Computer Science, Philosophy, and Mathematical Logic -- Dana S. Scott
Howard M. Wilcoff University Professor of Electrical and Computer Engineering -- Ronald A. Rohrer
Harry B. and James H. Higgins Professor of Economics and Finance and University Professor -- Lester B. Lave
John E. Swearingen University Professor of Chemical Engineering -- Arthur W. Westerberg
R.K. Mellon Professor of Computer Science -- Herbert A. Simon
R.M. Trueblood University Professor of Accounting and Economics (GSIA) -- Yuji Ijiri
Sun Company University Professor -- Stephen J. Fenves
U.A. & Helen Whitaker University Professor of Electrical & Computer Eng. -- Stephen W. Director
University Professor of Physics (Emeritus) -- Lincoln Wolfenstein
University Professor of Applied Science (Emeritus) -- William W. Mullins
University Professor of Composition -- Leonardo Balada
University Professor of Electrical and Computer Engineering -- Angel G. Jordan
University Professor of Psychology -- Robyn Dawes
University Professor of Physics and Mathematics -- Robert F. Sekerka
University Professor of Political Economy and Public Policy (GSIA) -- Alan Meltzer
William W. Cooper University Professor -- Otto Davis

Accreditations

By College and Department
Fall Semester 1994

College/Department

Accreditation Agency

CARNEGIE MELLON UNIVERSITY

Middle States Association of Colleges and Schools
MSA

CARNEGIE INSTITUTE OF TECHNOLOGY

Accreditation Board for Engineering Technology
ABET

Chemical Engineering
Civil Engineering
Computer Engineering
Electrical Engineering
Engineering and Public Policy
Mechanical Engineering
Materials Science and Engineering

COLLEGE OF FINE ARTS

Architecture

National Architectural Accrediting Board
NAAB

Art
Design

National Association of Schools of Art and Design
NASAD

Music

National Association of Schools of Music
NASM

GRADUATE SCHOOL OF INDUSTRIAL
Business
ADMINISTRATION

American Assembly of Collegiate Schools of
AACSB

MELLON COLLEGE OF SCIENCE

Chemistry

American Chemical Society
ACS

H. JOHN HEINZ III SCHOOL OF
PUBLIC POLICY & MANAGEMENT
NASPAA

National Association of Schools of Public
Affairs and Administration

[\[Top of this page\]](#) [\[Fact Book Main Page\]](#) [\[Next Section: Student Data\]](#)

Last update: 7/12/95

CMU Student Data

CONTENTS

- [Top Fifteen Competing Schools, Based on Application Overlap 1990 to 1994.](#)
- [Top Fifteen Competing Schools, Based on Admittance Overlap 1990 to 1994.](#)
- [Enrolled First-Time Freshmen by Region and State, Fall 1994 \(Graph\).](#)
- [Undergraduate Head Count Enrollment by Region and State, Fall 1994 \(Graph\).](#)
- [Head Count Enrollment by Continent and Country of Citizenship, Fall 1994.](#)
- [Head Count Enrollment by Department, Level, and Status, Fall 1994.](#)
- [Head Count Enrollment by Department, Level, and Sex, Fall 1994.](#)
- [Head Count Enrollment by Department and Class, Fall 1994.](#)
- [Full-Time Equivalent \(FTE\) Enrollment by Department and Class, Fall 1994.](#)
- [Head Count and FTE Enrollment by College, Level, and Status, Fall 1989 to 1994.](#)
- [Undergraduate Head Count Enrollment by Department, Race, and Sex, Fall 1994.](#)
- [Graduate Head Count Enrollment by Department, Race, and Sex, Fall 1994.](#)
- [Distribution of Students by Housing Type, Level, and Sex, Fall 1994.](#)
- [Average Within-University Persistence Rate by College 4-5-6 Year, Fall 1994 \(Graph\).](#)
- [Average Within-University Persistence Rate by College 1-2-3-4 Year, Fall 1994 \(Graph\).](#)
- [Total Degrees Granted by Department and Level, 1993-94.](#)
- [Total Degrees Granted by College and Level, 1989-90 to 1993-94.](#)

Top Fifteen Competing Schools Entering Freshmen 1990 to 1994 Based on Application Overlap

School	Rank Each Year				
	1994	1993	1992	1991	1990
Cornell	1	1	1	1	1
MIT	2	3	2	2	2
U of Penn	3	2	3	3	3
Northwestern	4	6	4	7	8
Johns Hopkins	5	5	5	11	18
Princeton	6	4	6	5	4
Case Western	7	17	10	14	25

Washington U	8	9	9	10	10
U. of Michigan	9	10	15	8	9
Boston U	10	11	11	9	7
RPI	11	8	7	4	6
Penn State	12	16	8	6	5
Yale	13	15	20	19	13
Duke	14	13	16	16	14
Columbia U	15	25	23	24	19

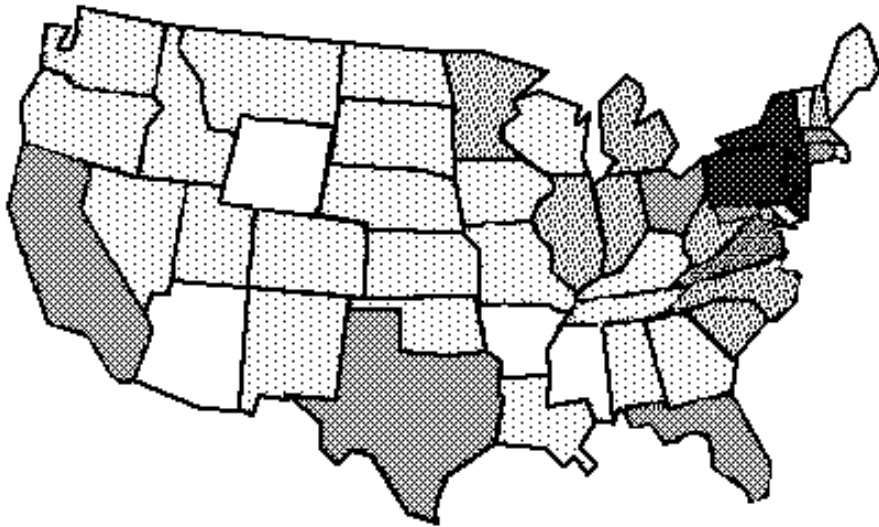
**Top Fifteen Competing Schools
Entering Freshmen 1990 to 1994
Based on Admittance Overlap**

School	Rank Each Year				
	1994	1993	1992	1991	1990
Cornell	1	1	1	2	1
Case Western	2	6	4	8	14
Washington U.	3	4	6	7	6
Boston U.	4	5	5	4	4
RPI	5	2	2	1	3
Northwestern	6	11	9	10	12
John Hopkins	7	9	11	15	11
U. of Penn	8	3	8	9	5
Penn State	9	7	3	3	2
U. of Michigan	10	8	10	5	10
MIT	11	14	14	11	9
Lehigh	12	10	12	16	8
New York U.	13	20	28	21	21
Tufts	14	18	18	26	16
Rutgers	15	13	12	13	15

Overlap refers to the number of applicants or admittees who applied or were admitted to Carnegie Mellon and one of the other schools listed.

Enrolled First-Time Freshmen

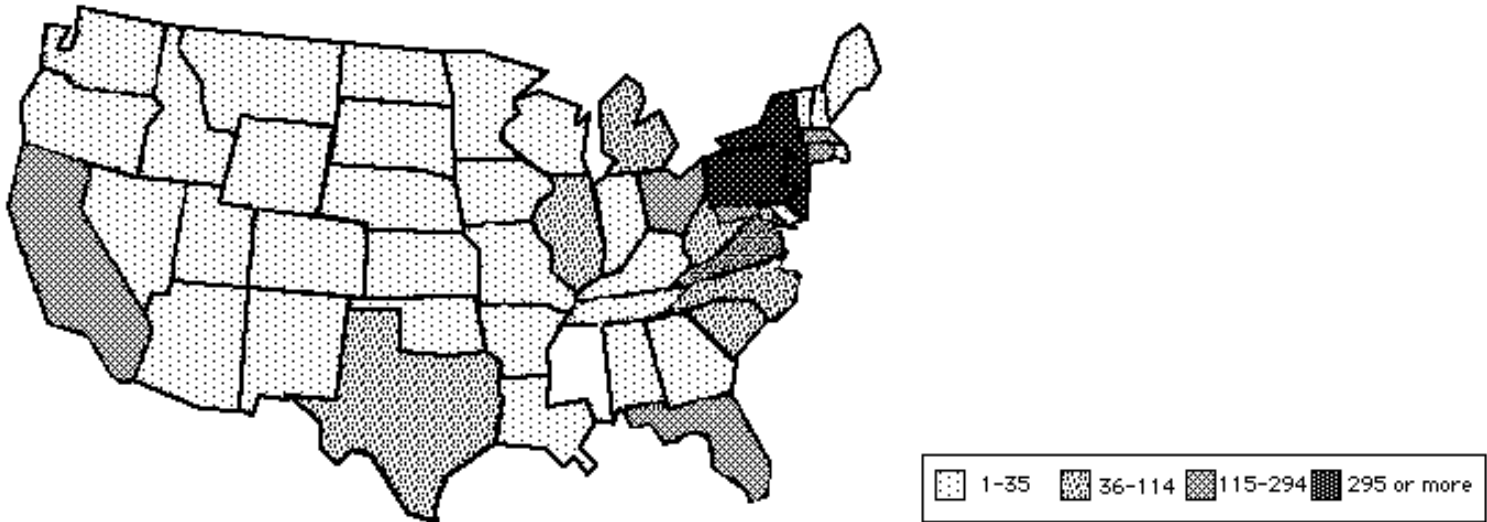
By Region and State
Fall Semester 1994



REGION/STATE	REGION/STATE	REGION/STATE	REGION/STATE
New England	South	Midwest	West
Connecticut 34	Arkansas 0	Illinois 12	Alaska 0
Maine 5	Alabama 3	Indiana 10	California 51
Massachusetts 36	Florida 36	Iowa 2	Colorado 8
New Hampshire 14	Georgia 7	Kansas 3	Hawaii 6
Rhode Island 2	Kentucky 4	Michigan 16	Idaho 2
Vermont 4	Louisiana 4	Minnesota 10	Montana 3
TOTAL 95	Mississippi 0	Missouri 3	Nevada 2
Percent of 8%	North Carolina 14	Nebraska 2	Oregon 8
Total	South Carolina 1	North Dakota 1	Utah 1
Middle States	Tennessee 7	South Dakota 1	Washington 5
Delaware 5	Virginia 39	Wisconsin 5	Wyoming 0
District of Columbia 7	TOTAL 115	TOTAL 65	TOTAL 86
Maryland 41	Percent of 10%	Percent of 6%	Percent of 8%
New Jersey 94	Total	Total	Total
New York 138	Southwest	U.S Territories 3	U.S. Total 1,017
Ohio 65	Arizona 0	Percent of 91%	Percent of 91%

Pennsylvania	261	New Mexico	1				
Total		Oklahoma	1	Total		Foreign	
West Virginia	10						
103		Texas	30	Unknown	0	Countries	
TOTAL	621	TOTAL	32			Percent of	9%
Percent of	55%	Percent of	3%			TOTAL	1,120
Total		Total					

**Undergraduate Headcount Enrollment
By Region and State
Fall Semester 1994**



REGION/STATE	REGION/STATE	REGION/STATE	REGION/STATE
New England	South	Midwest	West
Connecticut	Arkansas	Illinois	Alaska
107	2	65	5
Maine	Alabama	Indiana	California
22	12	22	148
Massachusetts	Florida	Iowa	Colorado
137	128	9	33
New Hampshire	Georgia	Kansas	Hawaii
35	34	12	19
Rhode Island	Kentucky	Michigan	Idaho
19	14	42	7
Vermont	Louisiana	Minnesota	Montana
17	16	24	8

TOTAL	337	Mississippi	0	Missouri	10	Nevada	5
Percent of Total	8%	North Carolina	44	Nebraska	7	Oregon	31
Middle States		South Carolina	17	North Dakota	1	Utah	1
		Tennessee	27	South Dakota	2	Washington	21
		Virginia	137	Wisconsin	19	Wyoming	1
Delaware	16	TOTAL	431	TOTAL	213	TOTAL	279
District of Columbia	18	Percent of Total	10%	Percent of Total	5%	Percent of Total	6%
Maryland	180						
New Jersey	345	Southwest					
New York	494			U.S Territories	20	U.S. Total	4,011
Ohio	226	Arizona	14			Percent of Total	90%
Pennsylvania	1,306	New Mexico	10	U.S. Citizens	2		
West Virginia	36	Oklahoma	6	Abroad		Foreign Countries	426
TOTAL	2,621	Texas	78	Unknown	0	Percent of Total	10%
Percent of Total	59%	TOTAL	108				
		Percent of Total	2%			TOTAL	4,437

**Headcount Enrollment
By Continent and Country of Citizenship
Fall Semester 1994**

Continent	Country	Undergraduate	Graduate	Special	Total
Africa	Algeria	0	1	0	1
	Botswana	0	7	0	7
	Cameroon	0	1	0	1
	Egypt	2	5	0	7
	Guinea	0	5	0	5
	Kenya	2	0	0	2
	Mali	0	1	0	1
	Nigeria	2	3	0	5
	South Africa	0	2	0	2
	Upper Volta / Burkina Faso	1	0	0	1
	TOTAL		7	25	0
Asia	Armenia	0	1	0	1
	Bangladesh	1	2	0	3

Burma	0	1	0	1	
China (PRC)	3	102	0	105	
China (Taiwan)	31	86	1	118	
Cyprus	0	3	0	3	
Hong Kong	42	6	0	48	
India	39	154	0	193	
Indonesia	23	25	0	48	
Iran	0	2	0	2	
Israel	1	10	0	11	
Japan	38	72	0	110	
Kuwait	2	0	0	2	
Malaysia	33	6	0	39	
Maldives	1	0	0	1	
Korea, Republic	48	42	0	90	
Oman	1	6	0	7	
Pakistan	11	5	0	16	
Philippines	5	7	0	12	
Russia	0	11	0	11	
Ukraine	0	2	0	2	
Saudi Arabia	2	6	0	8	
Singapore	33	11	0	44	
Sri Lanka	1	7	0	8	
Thailand	26	16	0	42	
TOTAL	341	583	1	925	
Australia	Australia	1	6	0	7
	TOTAL	1	6	0	7
Europe	Austria	6	1	0	7
	Belgium	0	5	0	5
	Bulgaria	0	3	0	3
	Czech Republic	0	1	0	
	Denmark	0	4	0	4
	Estonia	0	2	0	2
	Finland	0	3	0	3
	France	1	10	0	11
	Germany	1	17	1	19
	Greece	0	8	0	8
	Hungary	1	1	0	2
	Ireland	0	5	0	5

	Italy	1	10	0	11
	Lithuania	0	2	0	2
	Netherlands	1	0	0	1
	Norway	0	2	0	2
	Poland	0	3	0	3
	Portugal	1	3	0	4
	Romania	0	8	0	8
	Serbia	0	3	0	3
	Slovenia	0	2	0	2
	Spain	4	13	0	17
	Sweden	0	2	0	2
	Switzerland	1	8	0	9
	Turkey	9	31	0	40
	United Kingdom	10	14	0	24
	TOTAL	36	161	1	198
Central/South	Argentina	2	2	0	4
	Barbados	0	1	0	1
America	Bolivia	2	1	0	3
	Brazil	3	21	0	24
	Chile	0	5	0	5
	Columbia	0	2	0	2
	Costa Rica	1	0	0	1
	El Salvador	0	0	0	0
	Ecuador	2	2	0	4
	Jamaica	0	3	0	3
	Mexico	1	23	2	26
	Peru	1	2	0	3
	Uruguay	0	2	0	2
	Venezuela	9	12	0	21
	TOTAL	21	76	2	99
North America	Canada	12	41	0	53
Other	TOTAL	8	20	0	28
	Total Non-US Citizens	426	912	4	1,342
	Total US Citizens	4,011	1,792	137	5,940
TOTAL		4,437	2,704	141	7,282

**Headcount Enrollment
By Department, Level and Status
Fall Semester 1994**

College Department		Undergraduate			Graduate			Total Students		
		Full	Part	Total	Full	Part	Total	Full	Part	Total
CFA	Architecture	276	2	278	48	0	48	324	2	326
	Art	154	0	154	16	0	16	170	0	170
	Design	164	6	170	5	4	9	169	10	179
	Drama	184	7	191	50	9	59	234	16	250
	Music	124	2	126	29	38	67	153	40	193
	No Maj. Dept.	2	0	2	0	0	0	2	0	2
	TOTAL CFA	904	17	921	148	51	199	1,052	68	1,120
CIT	Biomedical E.	0	0	0	9	0	9	9	0	9
	Chemical E.	171	2	173	61	22	83	232	24	256
	Civil E.	112	1	113	59	13	72	171	14	185
	E &C E.	411	6	417	187	23	210	598	29	627
	EPP	0	0	0	28	6	34	28	6	34
	Mechanical E.	212	5	217	58	20	78	270	25	295
	MSE	49	1	50	49	7	56	98	8	106
	No Maj. Dept.	340	0	340	0	0	0	340	0	340
	Univ. Choice	9	0	9	0	0	0	9	0	9
TOTAL CIT	1,304	15	1,319	451	91	542	1,755	106	1,861	
GSIA	IA	0	0	0	503	175	678	503	175	678
	IM	343	7	350	0	0	0	343	7	350
	Univ. Choice	2	0	2	0	0	0	2	0	2
	TOTAL GSIA	345	7	352	503	175	678	848	182	1,030
H&SS	Economics	45	1	46	0	0	0	45	1	46
	English	115	5	120	54	41	95	169	46	215

	History	42	2	44	14	29	43	56	31	87
	Modern Lang.	2	0	2	0	0	0	2	0	2
	Philosophy	8	0	8	37	11	48	45	11	56
	Psychology	71	2	73	21	9	30	92	11	103
	S & D S.	128	6	134	11	6	17	139	12	151
	Statistics	5	0	5	21	10	31	26	10	36
	BHA(see note)	29	2	31	0	0	0	29	2	31
	Student Def'd.	3	0	3	0	0	0	3	0	3
	No Maj. Dept.	435	5	440	0	0	0	435	5	440
	Univ. Choice	4	0	4	0	0	0	4	0	4
	TOTAL H&SS	887	23	910	158	106	264	1,045	129	1,174
INI		0	0	0	32	0	32	32	0	32
MCS	Biology	148	7	155	57	0	57	205	7	212
	Chemistry	74	3	77	48	6	54	122	9	131
	Math	68	5	73	36	1	37	104	6	110
	Physics	67	8	75	60	1	61	127	9	136
	No Maj. Dept.	147	1	148	0	0	0	147	1	148
	Univ. Choice	7	0	7	0	0	0	7	0	7
	TOTAL MCS	511	24	535	201	8	209	712	32	744
SCS	Comp. Sci.	381	11	392	155	11	166	536	22	558
	Robotics	0	0	0	84	11	95	84	11	95
	SEI	0	0	0	19	10	29	19	10	29
	Univ. Choice	8	0	8	0	0	0	8	0	8
	TOTAL SCS	389	11	400	239	22	261	628	33	661
HNZ		0	0	0	236	283	519	236	283	519
		0	0	0	0	0	0	0	141	141
NON-DEGREE										
TOTAL		4,340	97	4,437	1,968	736	2,704	6,308	974	7,282

Note: Bach. of Humanities and Arts is a joint
dept.
between CFA &
H&SS

**Headcount Enrollment
By Department, Level and Sex
Fall Semester 1994**

		Undergraduate			Graduate			Total Students		
		Male	Female	Total	Male	Female	Total	Male	Female	Total
College	Department									
CFA	Architecture	171	107	278	29	19	48	200	126	326
	Art	66	88	154	7	9	16	73	97	170
	Design	79	91	170	6	3	9	85	94	179
	Drama	105	86	191	33	26	59	138	112	250
	Music	58	68	126	29	38	67	87	106	193
	No Major Dpt.	1	1	2	0	0	0	1	1	2
	TOTAL CFA	480	441	921	104	95	199	584	536	1,120
CIT	Biomedical E.	0	0	0	7	2	9	7	2	9
	Chemical E.	110	63	173	63	20	83	173	83	256
	Civil E.	96	17	113	59	13	72	155	30	185
	E &C E.	381	36	417	185	25	210	566	61	627
	EPP	0	0	0	23	11	34	23	11	34
	Mfg. E.	0	0	0	0	0	0	0	0	0
	Mechanical E.	190	27	217	70	8	78	260	35	295
	MSE	40	10	50	47	9	56	87	19	106
	No Major Dpt.	296	44	340	0	0	0	296	44	340
	Univ. Choice	9	0	9	0	0	0	9	0	9
	TOTAL CIT	1,122	197	1,319	454	88	542	1,576	285	1,861
GSIA	IA	0	0	0	551	127	678	551	127	678
	IM	240	110	350	0	0	0	240	110	350
	Univ. Choice	1	1	2	0	0	0	1	1	2
	TOTAL GSIA	241	111	352	551	127	678	792	238	1,030
H&SS	Economics	33	13	46	0	0	0	33	13	46
	English	47	73	120	34	61	95	81	134	215
	History	25	19	44	28	15	43	53	34	87
	IM - H&SS	0	0	0	0	0	0	0	0	0
	Modern Lang.	1	1	2	0	0	0	1	1	2
	Philosophy	5	3	8	38	10	48	43	13	56

	Psychology	38	35	73	17	13	30	55	48	103
	S & D S.	94	40	134	8	9	17	102	49	151
	Statistics	5	0	5	20	11	31	25	11	36
	BHA(see note)	5	26	31	0	0	0	5	26	31
	Student Def'd.	0	3	3	0	0	0	0	3	3
440	No Major Dpt.	263	177	440	0	0	0	263	177	
4	Univ. Choice	3	1	4	0	0	0	3	1	
	TOTAL H&SS	519	391	910	145	119	264	664	510	1,174
INI		0	0	0	26	6	32	26	6	32
MCS	Biology	80	75	155	32	25	57	112	100	212
	Chemistry	38	39	77	35	19	54	73	58	131
	Math	53	20	73	33	4	37	86	24	110
	Physics	66	9	75	55	6	61	121	15	136
148	No Major Dpt.	94	54	148	0	0	0	94	54	
7	Univ. Choice	5	2	7	0	0	0	5	2	
	TOTAL MCS	336	199	535	155	54	209	491	253	744
SCS	Comp.	364	28	392	140	26	166	504	54	558
	Sci.									
	Robotics	0	0	0	59	7	66	59	7	66
	S. E.	0	0	0	25	4	29	25	4	29
8	Univ. Choice	8	0	8	0	0	0	8	0	
	TOTAL SCS	372	28	400	224	37	261	596	65	661
HNZ		0	0	0	227	292	519	227	292	519
		0	0	0	0	0	0	76	65	141
NON-DEGREE										
TOTAL		3,070	1,367	4,437	1,886	818	2,704	5,032	2,250	7,282

Note: Bachelor of Humanities & Arts is a joint degree between CFA &

**Headcount Enrollment
By Department and Class
Fall Semester 1994**

Headcount	College	Department	Undergraduate					Graduate		
			Fresh.	Soph.	Jr.	Sr.	5th Yr.	Total	Total	
	CFA	Architecture	68	73	49	41	47	278	48	326
		Art	45	38	35	34	2	154	16	170
		Design	40	41	45	42	2	170	9	179
		Drama	55	52	43	37	4	191	59	250
		Music	47	32	20	23	4	126	67	193
		No Major Dept.	0	1	1	0	0	2	0	2
		TOTAL CFA	255	237	193	177	59	921	199	1,120
	CIT	Biomedical E.	0	0	0	0	0	0	9	9
		Chemical E.	0	57	62	51	3	173	83	256
		Civil E.	0	37	41	33	2	113	72	185
		E & C E.	0	165	123	122	7	417	210	627
		EPP	0	0	0	0	0	0	34	34
		Mfg. E.	0	0	0	0	0	0	0	0
		Mechanical E.	1	71	74	62	9	217	78	295
		MSE	0	18	15	14	3	50	56	106
		No Major Dept.	339	1	0	0	0	340	0	340
		Univ. Choice	9	0	0	0	0	9	0	9
		TOTAL CIT	349	349	315	282	24	1,319	542	1,861
	GSIA	IA	0	0	0	0	0	0	678	678
		IM	57	71	111	98	13	350	0	350
		Univ. Choice	2	0	0	0	0	2	0	2
		Total GSIA	59	71	111	98	13	352	678	1,030
	H&SS	Economics	1	5	15	24	1	46	95	141

	English	0	28	48	37	7	120	0	120
	History	0	6	17	17	4	44	43	87
	IM-H&SS	0	0	0	0	0	0	0	0
	Modern Lang.	0	1	0	0	1	2	0	2
	Philosophy	0	2	2	3	1	8	48	56
	Psychology	0	6	30	33	4	73	30	103
	S & D S.	0	22	57	46	9	134	17	151
	Statistics	0	1	0	4	0	5	31	36
	BHA (see note)	12	10	7	2		31	0	31
	Student Def'd.	0	0	0	2	1	3	0	3
	No Major Dept.	256	158	22	4	0	440	0	440
	Univ. Choice	4	0	0	0	0	4	0	4
	TOTAL H&SS	273	239	198	172	28	910	264	1,174
	INI	0	0	0	0		0	32	32
MCS	Biology	0	68	38	44	5	155	57	212
	Chemistry	0	31	28	16	2	77	54	131
	Math	0	21	24	24	4	73	37	110
	Physics	1	25	24	24	1	75	61	136
	No Major Dept.	140	5	1	2	0	148	0	148
	Univ. Choice	7	0	0	0	0	7	0	7
	TOTAL MCS	148	150	115	110	12	535	209	744
SCS	Comp. Sci.	98	121	73	89	11	392	166	558
	Robotics	0	0	0	0	0	0	95	95
	Univ. Choice	8	0	0	0	0	8	0	8
	TOTAL SCS	106	121	73	89	11	400	261	661
HNZ		0	0	0	0	0	0	519	519
NON-DEGREE		0	0	0	0	0	0	0	141
TOTAL		1,190	1,167	1,005	928	147	4,437	2,704	7,282

Note: Bachelor of Humanities & Arts is a joint degree
between CFA &

H&SS

**Full-Time Equivalent (FTE) Enrollment
By Department and Class
Fall Semester 1994**

		Undergraduate					Graduate		FTE
		Fresh.	Soph.	Jr.	Sr.	5th Yr.	Total	Total	Total
College	Department								
CFA	Architecture	68.0	72.0	49.0	41.0	47.0	277.0	48.0	325.0
	Art	45.0	38.0	35.0	34.0	2.0	154.0	16.0	170.0
	Design	39.0	41.0	45.0	41.0	2.0	168.0	7.0	175.0
	Drama	55.0	52.0	43.0	37.0	4.0	191.0	57.0	248.0
	Music	47.0	32.0	20.0	23.0	4.0	126.0	56.0	182.0
	No Major Dept.	0.0	1.0	0.0	0.0	0.0	1.0	0.0	1.0
	TOTAL CFA	254.0	236.0	192.0	176.0	59.0	917.0	184.0	1,101.0
CIT	Biomedical E.	0.0	0.0	0.0	0.0	0.0	0.0	9.0	9.0
	Chemical E.	0.0	57.0	62.0	51.0	3.0	173.0	68.0	241.0
	Civil E.	0.0	37.0	41.0	33.0	2.0	113.0	62.0	175.0
	E & C E.	0.0	165.0	123.0	121.0	7.0	416.0	193.0	609.0
	EPP	0.0	0.0	0.0	0.0	0.0	0.0	31.0	31.0
	Mechanical E.	1.0	71.0	72.0	62.0	8.0	214.0	67.0	281.0
	MSE	0.0	18.0	15.0	14.0	3.0	50.0	50.0	100.0
	No Major Dpt	338.0	1.0	0.0	0.0	0.0	339.0	0.0	339.0
	Univ. Choice	9.0	0.0	0.0	0.0	0.0	9.0	0.0	9.0
TOTAL CIT	348.0	349.0	313.0	281.0	23.0	1,314.0	480.0	1,794.0	
GSIA	IA	0.0	0.0	0.0	1.0	0.0	1.0	601.0	602.0
	IM	59.0	71.0	113.0	99.0	13.0	342.0	0.0	342.0
	Univ. Choice	3.0	3.0	0.0	0.0	0.0	6.0	0.0	6.0
	Total GSIA	62.0	74.0	113.0	100.0	13.0	349.0	601.0	950.0
H&SS	Economics	1.0	5.0	15.0	24.0	1.0	46.0	0.0	46.0
	English	0.0	28.0	48.0	37.0	5.0	118.0	66.0	184.0
	History	0.0	6.0	17.0	17.0	3.0	43.0	18.0	61.0
	Modern Lang.	0.0	1.0	0.0	0.0	1.0	2.0	0.0	2.0
	Philosophy	0.0	2.0	2.0	3.0	4.0	11.0	41.0	52.0
	Psychology	0.0	6.0	30.0	33.0	0.0	69.0	22.0	91.0

	S & D S.	0.0	22.0	57.0	45.0	8.0	132.0	12.0	144.0
	Statistics	0.0	1.0	0.0	4.0	0.0	5.0	23.0	28.0
	Student Def'd	0.0	0.0	0.0	2.0	0.0	2.0	0.0	2.0
	No Major Dpt	256.0	157.0	22.0	3.0	0.0	438.0	0.0	438.0
	Univ. Choice	4.0	0.0	0.0	0.0	0.0	4.0	0.0	4.0
	TOTAL H&SS	261.0	228.0	191.0	168.0	22.0	870.0	182.0	1,052.0
INI		0.0	0.0	0.0	0.0	0.0	0.0	32.0	32.0
MCS	Biology	0.0	68.0	38.0	42.0	3.0	151.0	57.0	208.0
	Chemistry	0.0	31.0	27.0	16.0	2.0	76.0	50.0	126.0
	Math	0.0	21.0	24.0	23.0	2.0	70.0	36.0	106.0
	Physics	1.0	25.0	24.0	21.0	1.0	72.0	60.0	132.0
	No Major Dpt	138.0	5.0	1.0	2.0	0.0	146.0	0.0	146.0
	Univ. Choice	7.0	0.0	0.0	0.0	0.0	7.0	0.0	7.0
	TOTAL MCS	146.0	150.0	114.0	104.0	8.0	522.0	203.0	725.0
SCS	Comp. Sci.	99.0	124.0	75.0	89.0	9.0	396.0	159.0	555.0
	Robotics	0.0	0.0	0.0	0.0	0.0	0.0	25.0	25.0
	Univ. Choice	9.0	0.0	0.0	0.0	0.0	9.0	0.0	0.0
	TOTAL SCS	108.0	124.0	75.0	89.0	9.0	396.0	184.0	580.0
HNZ		0.0	0.0	0.0	0.0	0.0	0.0	323.0	323.0
NON-DEGREE		0.0	0.0	0.0	0.0	0.0	0.0	0.0	68.5
TOTAL		1,179.0	1,161.0	998.0	918.0	134.0	4,368.0	2,189.0	6,625.5

**Headcount and FTE Enrollment
By College, Level, and Status
Fall Semesters 1989 to 1994**

College	Status	1989			1990			1991		
		Undg.	Grad.	Total	Undg.	Grad.	Total	Undg.	Grad.	Total
CFA	Headcount									
	Full	933	84	1,017	958	70	1,028	925	63	988

	Part	37	81	118	28	87	115	17	70	87
	Total	970	165	1,135	986	157	1,143	942	133	1,075
	FTE	953	127	1,080	969	117	1,086	936	104	1,040
CIT	Headcount									
	Full	1,201	446	1,647	1,231	494	1,725	1,265	499	1,764
	Part	40	108	148	29	111	140	15	89	104
	Total	1,241	554	1,795	1,260	605	1,865	1,280	588	1,868
	FTE	1,215	482	1,697	1,238	526	1,764	1,274	528	1,802
GSIA	Headcount									
	Full	239	457	696	260	451	711	289	476	765
	Part	6	209	215	4	180	184	6	174	180
	Total	245	666	911	264	631	895	295	650	945
	FTE	242	568	811	259	561	821	292	588	880
H&SS	Headcount									
	Full	1,031	122	1,153	968	151	1,119	860	158	1,018
	Part	46	109	155	36	106	142	31	102	133
	Total	1,077	231	1,308	1,004	257	1,261	891	260	1,151
	FTE	1,057	142	1,200	979	171	1,150	877	180	1,058
INI	Headcount									
	Full	0	24	24	0	38	38	0	46	46
	Part	0	0	0	0	24	24	0	0	0
	Total	0	24	24	0	62	62	0	46	46
	FTE		24	24	0	38	38	0	46	46
MCS	Headcount									
	Full	732	204	936	698	202	900	616	194	810
	Part	31	34	65	32	22	54	17	16	33
	Total	763	238	1,001	730	224	954	633	210	843
	FTE	743	210	953	710	208	919	624	200	824
SCS	Headcount									
	Full	0	180	180	80	217	297	236	231	467
	Part	0	13	13	3	20	23	8	25	33
	Total	0	193	193	83	237	320	244	256	500
	FTE	0	185	185	80	227	307	241	240	482
HNZ	Headcount									

	Full	0	226	226	0	226	226	0	231	231
	Part	0	291	291	0	309	309	0	338	338
	Total	0	517	517	0	535	535	0	569	569
FTE		0	312	312	0	322	322	0	339	339

TOTAL*	Headcount									
	Full	4,136	1,743	5,887	4,195	1,849	6,047	4,191	1,898	6,095
	Part	160	845	1,203	132	859	1,169	94	814	1,053
	Total	4,296	2,588	7,090	4,327	2,708	7,216	4,285	2,712	7,148
FTE		4,212	2,053	6,345	4,237	2,172	6,469	4,246	2,227	6,526

*Total includes Non-Degree Headcount and FTE Enrollment

**Headcount and FTE Enrollment
By College, Level and Status
Fall Semesters 1989 to 1994**

College	Status	1992			1993			1994		
		Undg.	Grad.	Total	Undg.	Grad.	Total	Undg.	Grad.	Total
CFA	Headcount									
	Full	864	56	920	864	92	956	904	148	1,052
	Part	46	83	129	45	72	117	17	51	68
	Total	910	139	1,049	909	164	1,073	921	199	1,120
FTE		892	104	996	894	140	1,034	917	184	1,101
CIT	Headcount									
	Full	1,330	441	1,771	1,330	496	1,826	1,304	451	1,755
	Part	21	120	141	21	96	117	15	91	106
	Total	1,351	561	1,912	1,351	592	1,943	1,319	542	1,861
FTE		1,343	485	1,829	1,343	527	1,871	1,314	480	1,794
GSIA	Headcount									
	Full	277	455	732	289	455	744	345	503	848
	Part	10	206	216	7	174	181	7	175	182
	Total	287	661	948	296	629	925	352	678	1,030
FTE		281	568	849	293	544	837	349	601	950

H&SS	Headcount									
	Full	852	165	1,017	898	165	1,063	887	158	1,045
	Part	47	101	148	34	99	133	23	106	129
	Total	899	266	1,165	932	264	1,196	910	264	1,174
	FTE	880	188	1,069	922	186	1,108	870	182	1,052
INI	Headcount									
	Full	0	45	45	0	36	36	0	32	32
	Part	0	0	0	0	0	0	0	0	0
	Total	0	45	45	0	36	36	0	32	32
	FTE	0	45	45	0	36	36	0	32	32
MCS	Headcount									
	Full	558	197	755	626	204	830	511	201	712
	Part	22	19	41	12	12	24	24	8	32
	Total	580	216	796	638	216	854	535	209	744
	FTE	569	204	774	632	208	841	522	203	725
SCS	Headcount									
	Full	265	222	487	246	240	486	389	239	628
	Part	10	26	36	16	22	38	11	22	33
	Total	275	248	523	262	262	524	400	261	661
	FTE	270	230	501	255	248	504	396	184	580
HNZ	Headcount									
	Full	0	215	215	0	242	242	0	236	236
	Part	0	306	306	0	298	298	0	283	283
	Total	0	521	521	0	540	540	0	519	519
	FTE	0	316	316	0	339	339	0	323	323
TOTAL*	Headcount									
	Full	4,146	1,796	5,949	4,253	1,930	6,195	4,340	1,968	6,308
	Part	156	861	1,182	135	773	1,064	97	736	974
	Total	4,302	2,657	7,131	4,388	2,703	7,259	4,437	2,704	7,282
	FTE	4,238	2,144	6,444	4,342	2,230	6,641	4,368	2,189	6,625

*Total includes Non-Degree
Headcount and FTE Enrollment

**Undergraduate Headcount Enrollment
By Department, Race and Sex
Fall Semester 1994**

College

Department

CFA	NRA		Black		AI/AN		A/PI		Hispanic		White		Unkn.		Total	M	F
	M	F	M	F	M	F	M	F	M	F	M	F	M	F			
Architecture	14	8	2	5	0	1	30	26	9	2	87	46	29	19	278	171	
107																	
Art	1	2	6	1	0	0	5	7	1	7	38	47	15	24	162	66	88
Design	7	3	3	0	0	0	11	12	2	4	46	50	10	22	170	79	91
Drama	2	1	4	7	0	0	3	2	3	5	73	51	20	20	191	105	86
Music	4	7	0	2	0	1	3	3	1	0	39	40	11	15	126	58	68
No Major Dpt.	0	0	1	1	0	0	0	0	0	0	0	0	0	0	2	1	
1																	
TOTAL CFA	28	21	16	16	0	2	52	50	16	18	283	234	85	100	921	480	441

CIT

Biomedical E.	0	0	0	0	0	0	0	0	0	0	0	0	0	0	0	0	0
0																	
Chemical E.	11	4	4	6	0	0	22	13	2	3	61	31	10	6	173	110	
63																	
Civil E.	6	0	6	1	0	0	9	1	1	2	69	10	5	3	113	96	17
E & C E.	68	9	6	0	1	0	77	11	6	0	178	12	45	4	417	381	36
Mechanical E.	25	0	7	2	0	0	28	4	11	0	103	19	16	2	217	190	
27																	
MSE	2	0	0	1	0	0	4	5	0	0	28	3	6	1	50	40	10
No Major Dpt.	30	2	16	4	0	0	43	5	17	3	144	22	46	8	340	296	
44																	
Univ. Choice	0	0	0	0	0	0	0	0	0	0	9	0	0	0	9	9	
0																	
TOTAL CIT	142	15	39	14	1	0	183	39	37	8	592	97	128	24	1,319	1,122	197

2

H&SS

Economics	6	4	0	0	0	0	5	0	1	0	19	7	2	2	46	33	13
English	1	0	2	2	1	0	4	3	1	1	25	52	13	15	120	47	73
History	1	0	0	0	0	0	3	1	0	0	19	17	2	1	44	25	19

CMU Student Data

Modern Lang.	0	0	0	0	0	0	0	0	0	0	0	1	1	0	2	1	1
Philosophy	0	0	0	0	0	0	0	1	0	0	3	1	2	1	8	5	
Psychology	1	1	2	3	0	0	3	3	2	2	26	22	4	4	73	38	
S & D S.	12	4	1	2	0	1	20	6	5	0	44	23	11	4	133	93	40
Statistics	0	0	0	0	0	0	1	0	0	0	3	0	1	0	5	5	
Student Def'd.	0	0	0	0	0	0	0	0	0	0	0	2	0	1	3	0	
No Major Dpt.	30	22	14	14	1	0	40	29	8	8	117	77	53	27	440	263	
Univ. Choice	0	0	0	0	0	0	0	0	0	0	1	1	2	0	4	3	
BHA (see note)	0	0	1	1	0	0	2	0	0	2	3	13	0	10	32	6	
TOTAL H&SS	51	31	20	22	2	1	78	43	17	13	260	216	91	65	910	519	

GSIA

IM Univ. Choice	43	18	4	9	0	0	48	28	5	5	45	114	27	5	351	172	179
TOTAL IM	43	18	4	9	0	0	48	29	5	5	45	114	27	5	352	172	180

MCS

Biology	6	3	1	4	0	0	19	20	3	3	39	41	12	4	155	80	75
Chemistry	3	4	0	1	0	0	6	9	2	1	21	20	6	4	77	38	39
Math	2	7	0	0	0	0	6	3	0	0	34	10	11	0	73	53	20
Physics	4	0	0	0	0	0	4	1	0	0	42	7	16	1	75	66	9
No Major Dpt.	9	0	7	7	1	0	17	6	2	3	44	23	14	15	148	94	
Univ. Choice	0	0	0	0	0	0	1	0	0	1	2	1	2	0	7	5	
TOTAL MCS	24	14	8	12	1	0	53	39	7	8	182	102	61	24	535	336	199

SCS

Comp. Sci.	29	10	7	2	1	0	47	4	11	0	201	10	68	2	392	364	
Robotics	0	0	0	0	0	0	0	0	0	0	0	0	0	0	0	0	0

Univ. Choice	0	0	1	0	0	0	2	0	0	0	2	0	3	0	8	8	
TOTAL SCS	29	10	8	2	1	0	49	4	11	0	203	10	71	2	400	372	28
TOTAL	317	109	95	75	5	3	463	204	93	52	1,565	773	463	220	4,437	3,001	1,436

Note: Bachelor of Humanities and Arts is a joint department between CFA & H&SS

**Distribution of Students
By Housing Type, Level and Sex
Fall Semester 1994**

CMU	Carnegie Mellon Housing			Fraternity Sorority**	Non- Housing	TOTAL
	On-Campus	Off-Campus	Total			
Undergraduate						
Freshman						
Male	663	31	694	0	119	813
Female	335	10	345	0	32	377
TOTAL	998	41	1,039	0	151	*1,190
Sophomore						
Male	473	34	507	79	219	805
Female	233	22	255	18	89	362
TOTAL	706	56	762	97	308	1,167
Junior						
Male	256	36	292	125	264	681
Female	138	29	167	52	105	324
TOTAL	394	65	459	177	369	1,005
Senior						

Male	189	22	211	198	362	771
Female	73	16	89	68	147	304
TOTAL	262	38	300	266	509	1,075

Undergraduate

Male	1,581	123	1,704	402	964	3,070
Female	779	77	856	138	373	1,367
TOTAL	2,360	200	2,560	540	1,337	4,437

Graduate

Male	0	0	0	0	1,886	1,886
Female	0	0	0	0	818	818
TOTAL	0	0	0	0	2,704	2,704

Non-Degree

Male	0	0	0	0	76	76
Female	0	0	0	0	65	65
TOTAL	0	0	0	0	141	141

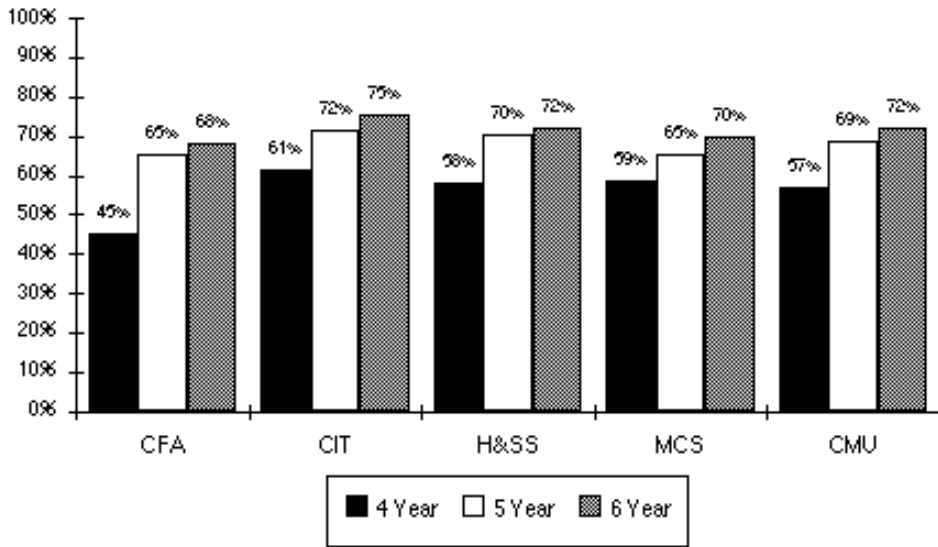
TOTAL

Male	1,581	123	1,704	402	2,926	5,032
Female	779	77	856	138	1,256	2,250
TOTAL	2,360	200	2,560	540	4,182	7,282

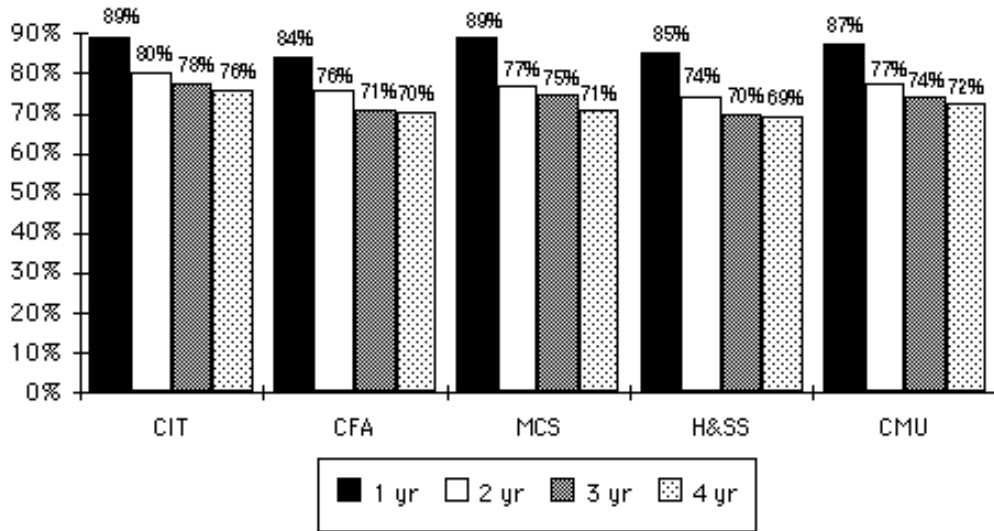
*Freshmen count of 1,190 includes 1,120 first-time freshmen and 70 non-first-time freshmen.

**Greek resident information is estimated.

**Average Within-University Persistence Rate 4-5-6 Year
By College and for CMU
As of Fall 1994**



**Average Within-University Persistence Rate 1-2-3-4 Year
By College and for CMU
As of Fall 1994**



Notes: Persistence is the sum of those enrolled and those who have graduated. Within university rates show the college in which the student originally enrolled, although the student may have since transferred internally to another college. Bars for persistence rates represent an average of the three most recent rates

available: entering classes of 1991-93, 1990-92, 1989-91, 1988-90.

**Total Degrees Granted
By Department and Level
Academic Year 1993-94**

College	Department	Bachelors	Masters	Doctorates	TOTAL
CFA 55	Architecture	40	13	2	
	Art	40	19	0	59
	Design	38	0	0	38
	Drama	33	14	0	47
	Music	17	26	0	43
	TOTAL CFA	168	72	2	242
CIT 72	Biomed. E.	0	2	0	2
	Chemical E.	53	9	10	
	Civil E.	34	13	8	55
	E&CE.	129	31	38	198
	E&PP	0	2	1	3
	Mfg. E.	0	1	0	1
	Mechanical E.	81	22	9	
	MSE	10	13	14	37
	Eng. Other	0	15	1	16
	TOTAL CIT	307	108	81	496
GSIA	IA	0	253	15	268
	IM	105	0	0	105
	TOTAL GSIA	105	253	15	373
H&SS	Economics	20	4	2	26
	English	53	28	3	84
	History	26	12	9	47
	Modern Lang.	5	0	0	

5

	Philosophy	3	13	0	16
	Psychology	26	3	7	36
	S&DS	24	1	2	27
	Statistics	1	5	6	12
	Student Defined	3	0	0	3
	TOTAL H&SS	161	66	29	256
MCS	Biology	35	1	6	42
	Chemistry	15	7	5	27
	Math	93	7	6	106
	Physics	24	10	6	40
	TOTAL MCS	167	25	23	215
SCS	Comp. Sci.	30	69	16	115
	Robotics	0	0	0	0
	TOTAL SCS	30	69	16	115
HNZ		0	158	1	159
	TOTAL	938	751	167	1856

**Total Degrees Granted
By College and Level
Academic Years 1989-90 and 1993-94**

College		1989-90	1990-91	1991-92	1992-93	1993-94
	Degrees					
CFA	Bachelors	173	178	202	202	168
	Masters	62	51	59	56	72
	Doctorates	1	5	4	1	2
	TOTAL CFA	236	234	265	259	242
CIT	Bachelors	236	233	230	261	307

	Masters	96	114	127	144	108
	Doctorates	77	70	71	68	81
	TOTAL CIT	409	417	428	473	496
GSIA	Bachelors	93	91	102	136	105
	Masters	282	241	251	281	253
	Doctorates	10	15	11	12	15
	TOTAL GSIA	385	347	364	429	373
H&SS	Bachelors	221	204	168	166	161
	Masters	47	47	69	61	66
	Doctorates	15	30	11	19	29
	TOTAL H&SS	283	281	248	246	256
MCS	Bachelors	171	130	170	177	167
	Masters	27	29	27	19	25
	Doctorates	30	28	23	28	23
	TOTAL MCS	228	187	220	224	215
SCS	Bachelors	0	39	25	25	30
	Masters	11	43	60	85	69
	Doctorates	20	22	24	24	16
	TOTAL CS	31	104	109	134	115
HNZ	Masters	162	177	150	196	158
	Doctorates	9	5	3	3	1
	TOTAL HNZ	171	182	153	199	159
CMU	Bachelors	894	875	897	967	938
	Masters	687	702	743	842	751
	Doctorates	162	175	147	155	167
	TOTAL	1,743	1,752	1,787	1,964	1,856

[\[Top of this page\]](#) [\[Fact Book Main Page\]](#) [\[Next Section: Teaching and Academic Support Data\]](#)

CMU Teaching and Academic Support Data

CONTENTS

- [Units Taught by Department, Semester, and Level 1993-94.](#)
- [Units Taught by College and Level, 1989-90 to 1993-94.](#)
- [Computing Services Statistics, 1991 to 1994.](#)
- [Instructional Technology Statistics, 1991 to 1994.](#)
- [Library Collections and Utilization, 1992 to 1994.](#)
- [Teaching and Academic Support Additional Facts and Figures \(PCHE, UTC\).](#)

Units Taught By Department, Semester and Level Academic Year 1993-94

Spring Semester	YEAR	Fall Semester			Total	Fall Semester		
		Underg	Grad	Other		Underg	Grad	Other
Total	TOTAL							
College	Department							
CFA	Architecture	9,993	830	45	10,868	10,035	805	18
10,858	21,726							
	Art	7,261	779	76	8,116	6,713	822	87
7,622	15,738							
	Design	6,539	32	39	6,610	5,763	258	57
6,078	12,688							
	Drama	8,233	1,777	27	10,037	7,943	1,529	30
9,502	19,539							
	Music	6,391	1,770	18	8,179	6,435	1,611	60
8,106	16,285							
	Interdiscp.	1,548	54	48	1,650	1,548	102	9
1,659	3,309							
	TOTAL CFA	39,965	5,242	253	45,460	38,437	5,127	261
43,825	89,285							
CIT	Biomedical E.	765	198	48	1,011	768	261	27
1,056	2,067							
	Chemical E.	5,016	2,672	60	7,748	3,898	2,574	0
6,472	14,220							
	Civil E.	3,702	2,400	60	6,162	3,825	2,092	18
5,935	12,097							
	E&CE.	10,278	10,245	225	20,748	9,663	9,380	183
19,226	39,974							
	EPP	1,320	977	36	2,333	2,424	1,040	24
3,488	5,821							
	Mechanical E.	8,319	3,904	117	12,340	7,112	3,855	66

11,033								
23,373								
	MSE	1,786	3,031	21	4,838	1,798	2,730	0
4,528	9,366							
	Interdiscp.	660	252	36	948	633	141	
0	774 1,722							
	TOTAL CIT	31,846	23,679	603	56,128	30,121	22,073	318
52,512	108,640							
GSIA	Economics	7,623	27	0	7,650	8,838	36	9
8,883	16,533							
	IM	10,953	18	54	11,025	12,972	54	54
13,080	24,105							
	GSIA	66	29,513	270	29,849	78	28,058	234
28,370	58,219							
	TOTAL GSIA	18,642	29,558	324	48,524	21,888	28,148	297
50,333	98,857							
H&SS	English	11,352	2,583	278	14,213	11,310	1,553	180
13,043	27,256							
	History	10,530	659	141	11,330	10,809	680	90
11,579	22,909							
	Mod. Lang.	6,873	387	192	7,452	5,404	369	114
5,887	13,339							
	Philosophy	5,466	1,421	108	6,995	3,153	1,216	156
4,525	11,520							
	Psychology	6,931	1,033	171	8,135	7,274	1,070	135
8,479	16,614							
	S&DS	5,644	384	63	6,091	3,936	715	66
4,717	10,808							
	Statistics	6,576	1,727	87	8,390	5,427	1,297	93
6,817	15,207							
	Interdiscp.	207	0	0	207	261	0	
9	270 477							
	TOTAL &SS	53,579	8,194	1,040	62,813	47,574	6,900	843
55,317	118,130							
MCS	Biology	4,806	2,034	36	6,876	3,969	1,982	0
5,951	12,827							
	Chemistry	9,028	2,228	37	11,293	7,580	1,886	73
9,539	20,832							
	Math	22,182	1,884	159	24,225	17,976	1,696	152
19,824	44,049							
	Physics	10,083	2,373	75	12,531	10,326	2,100	102
12,528	25,059							
	Interdiscp.	0	0	0	0	0	0	
0	0 0							
	TOTAL MCS	46,099	8,519	307	54,925	39,851	7,664	327
47,842	102,767							
SCS	Comp. Sci.	11,366	9,008	254	20,628	13,609	8,528	202
22,339								

42,967								
	Robotics	12	2,091	69	2,172	21	2,331	12
2,364	4,536							
	TOTAL SCS	11,378	11,099	323	22,800	13,630	10,859	214
24,703	47,503							
	HNZ	30	17,028	204	17,262	156	16,137	180
16,473	33,735							
	OTHER	7,115	722	91	7,928	4,725	733	94
5,552	13,480							
TOTAL		208,654	104,041	3,145	315,840	196,382	97,641	2,534
296,557	612,397							

Note: Please see units definition in appendix III, p. 87

**Units Taught
By College and Level
Academic Years 1989-90 to 1993-94**

College 94	Level	1989-90	1990-91	1991-92	1992-93	1993-94
CFA	Undergraduate	82,003	81,945	83,344	79,137	
78,402	Graduate	9,858	8,411	7,319	7,756	
10,369	Other	413	500	432	408	
514	TOTAL CFA	92,274	90,856	91,095	87,301	
89,285						
CIT	Undergraduate	50,463	52,499	58,099	61,206	
61,967	Graduate	41,944	46,070	46,698	44,313	
45,752	Other	748	511	771	375	
921	TOTAL CIT	93,155	99,080	105,568	105,894	
108,640						
GSIA	Undergraduate	37,321	37,539	39,727	38,653	
40,530	Graduate	55,289	52,650	57,581	57,534	
57,706	Other	543	507	582	603	
621	TOTAL GSIA	93,153	90,696	97,890	96,790	

98,857

H&SS	Undergraduate	103,349	100,712	96,234	96,265
101,153	Graduate	13,184	14,039	14,610	15,522
15,094	Other	2,049	1,695	1,752	1,608
1,883	TOTAL H&SS	118,582	116,446	112,596	113,395

118,130

MCS	Undergraduate	84,764	87,443	82,985	82,994
85,950	Graduate	17,487	16,642	15,487	16,466
16,183	Other	802	651	559	461
634	TOTAL MCS	103,053	104,736	99,031	99,921

102,767

SCS	Undergraduate	18,070	21,325	21,825	23,444
25,008	Graduate	15,319	19,228	20,009	20,007
21,958	Other	423	677	788	799
537	TOTAL SCS	33,812	41,230	42,622	44,250

47,503

HNZ	Undergraduate	1,638	540	480	942
186	Graduate	30,909	31,363	34,646	31,447
33,165	Other	48	126	186	333
384	TOTAL SUPA	32,595	32,029	35,312	32,722

33,735

OTHER	Undergraduate	9,735	10,822	10,211	10,756
11,840	Graduate	420	633	630	522
1,455	Other	454	584	661	474
185	TOTAL OTHER	10,609	12,039	11,502	11,752

13,480

CMU	Undergraduate	387,343	392,825	392,905	393,397
405,036	Graduate	184,410	189,036	196,980	193,567

201,682

Other	5,480	5,251	5,731	5,061
5,679				
TOTAL	577,233	587,112	595,616	592,025
612,397				

Other=ROTC, Phys. Ed. and International Education

**Computing Services Statistics
Fiscal Years 1991 thru 1994**

Change in Network Connections		Total 1992	Total 1993
Total 1994			
	Token Ring	1,011	
1,012	1,138		
	Apple Talk	1,799	
2,623	2,761		
	Ethernet	1,127	
2,084	3,084		
	Total Network	3,937	
5,719	6,983		
	Connections		
	Total Asynchronous Connections	2,000	N/
A	573		
	TOTAL	5,937	
5,719	7,556		
Andrew Usage		1992	
1993	1994		
	Number of Andrew	12,614	
10,864	12,876		
	systems		
IDs	Number of active	8,720	
9,300	9,600		
	Andrew		
user*	Average weekly UNIX server logins*	16,000	
20,000	29,000		
	Average weekly UNIX unique user IDs*	3,000	
2,500			
3,300	Average number of connected workstations*	1,200	
1,300			
1,000	Peak number of connected workstations*	1,700	
1,900			
1,100	Weekly unique users of MacMail	3,700	
5,000			

3,200		
	Weekly unique users of EzMail	1,100
1,300		
	Weekly number unique Macintosh connections	1,900
2,500		
700		
	Average total weekly PC-Mac server sessions	45,000
65,009		
74,000		

Computer Store Purchases (CPUs)		1991	1992
1993	1994		
	Students	655	543
599	634		
	Faculty	76	62
83	68		
	Staff	123	106
153	162		
	Departments	675	732
818	867		
	Others	0	4
0	0		
	TOTAL	1,529	1,447
1,653	1,731		

Computers in Public Clusters		1991	1992
1993	1994		
	IBM RT	3	1
0	0		
	IBM PC	23	3
0	0		
	IBM PS/2	21	27
23	12		
	Mac II	45	128
179	8		
	Macintosh Plus and SE	104	73
8	0		
	Sun 3/60	22	0
0	0		
	DECstation 3100	106	104
104	75		
	DECstation 5000	0	20
20	20		
	NeXt	13	11
11	0		
	DEC 486	0	0
0	22		
	PowerMac 100	0	0

0	50		
	SunSparc5	0	0
0	33		
	Mac LC III	0	0
0	20		
	Mac IIci	0	0
0	85		
	Mac IIcs	0	0
0	18		
		TOTAL	337 367
345	343		

* Denotes estimates for the academic

year

**Instructional Technology Statistics
Fiscal Years 1991 thru 1994**

Equipment for
Delivery

		Total 1991	Total 1992	Total 1993
Total 1994				
9	Video/Data Projectors	9	9	
	10			
	VCRs	12	14	
12	12			
	Video/Data Monitors	10	10	
8	10			
	Slide Projectors	18	18	
18	18			
	Tape Players	21	23	
28	32			
	Sound Systems	7	9	
9	9			
	Overhead Projectors	14	14	
17	9			
	Videodisc Players	3	3	
3	2			
	Personal Computers	6	8	
8	9			
	TOTAL	100	108	
112	111			

Classrooms
(level of installed
equipment)

		1991	1992
1993	1994		

	Overhead Projector	58	54
83	83		
	Video Viewing	22	28
35	38		
	Data Viewing	9	9
10	11		
	TOTAL	89	91
128	132		

Video Viewing Cluster

		1991	1992
1993	1994		
	VCR carrels	13	13
14	19		
	Videodisc/VCR carrels	6	8
9	11		
	Interactive carrels	2	2
2			
3			
	Videotapes viewed in carrels	16,001	16,379
17,146			
13,205			
	Videotapes previewed by Faculty	590	588
730			
712			
	Videotapes used in class	427	567
924	1,050		
	TOTAL	7,018	17,534
18,800	15,083		

Student Video Editing Cluster

		1991	1992
1993	1994		
	S-VHS stations	2	2
2	0		
	VHS stations	2	2
2	0		
	Hi-8 stations	0	1
2	0		
	Circulating VHS camcorders	13	15
16			
14			
	Circulating Hi-8 camcorders	0	5
5			
4			

**Library Collections and Utilization
Fiscal Years 1992 thru 1994**

	1993	1994	1992	
Library Holdings				
Total Print Volumes (Books, Bound Journals, etc.)			805,689	
828,109				
852,241				
Current Subscriptions -			3,736	
3,834	3,889			
Periodicals, Newspapers, Gov. Documents				
Microforms -			674,826	
717,355	756,985			
Books, Serial Titles, Gov. Documents				
Graphic Materials -			182,463	
186,156	189,756			
Art Reproductions (Mounted, Unmounted), Slides*				
Audio Materials -			17,773	
19,897	21,340			
Cassettes, Phonograph Records, Compact Discs,				
Tapes				
Video Materials			2,828	
3,272	4,248			
Machine Readable Materials			488	
267				
1,659				
Music Scores			23,569	
22,758	22,267			
Maps			N/A	N/
A	157			
*number of volumes/ units				

Library Equipment Support

Photocopies Made in Libraries			2,107,396	2,025,229
1,906,416				96
29	16			
Microform Copies Made in Libraries			66,065	
71,623				
53,814				

Number of Visits to the

Libraries

Engineering and Science Library		230,166	
221,666			
231,451			
Hunt Library		1,061,555	
901,274	853,335		
Mellon Institute Library		9,206	
9,769	9,483		

Circulation of Holdings

		156,947	146,730
149,161			

Books Used in Libraries

		118,291	113,399
115,407			

Resource**Sharing**

Interlibrary

Loan

	Items Borrowed		3,291
4,484	5,123		
	Items Loaned		6,938
5,535	5,667		
Oakland Library Consortium			
	Items Borrowed		2,567
2,359	2,424		
	Items Loaned		898
677	693		

Current Awareness**Service**

Number of Subscriptions		1,421
1,418	1,438	
Distinct titles Requested		825
831	828	
Individuals Using		86
76	76	
Departments Represented		33
34	32	

Journal Article Delivery Service**(JADS)**

Articles Delivered		832
638	306	

Electronic Journal Article Delivery Service (E-JADS)

Articles Delivered (beginning January 1993>		N/A
476		
2,116		

Computerized Library

Resources

Searces Performed on LS/2000	507,763	
385,909		
371,541		
Searches Performed on LIS	619,068	1,161,726
1,315,763		

Computerized Library Resources Fiscal Year

1994

The University Libraries provide several electronic information services. The Library Information System (LIS), available over the campus network, provides access to 12 databases of information, including the Library Catalog. The Catalog contains records of items owned by the libraries, such as books, journals, technical reports, government documents, musical scores, sound recordings and videotapes. The catalog tells users where these items can be found. Within the libraries, users can search a collection of CD-ROM indexes and other search systems, including LS/2000. LS/2000, like the Library Catalog database in LIS, is an online catalog of items owned by the libraries. It indicates the location of items and whether they are checked out. LS/2000 is due to be replaced by June 1995 with the SIRSI Unicorn Integrated Online Library System.

	# Searches Performed	# Searches Performed	# FY
Searches Performed			
	FY 92	FY 93	FY
94			
LS/2000	507,763	385,909	
371,541			
LIS databases:			
ABI / Inform	12,610	31,641	
32,103			
Announcements *	2,095	*****	

ArchPics	4,834	4,529	
4,918			

Bibliographies *	2,948	*****

Business *	3,982	*****

Business Dateline	N/A	11,097
24,657		
Choice Book Reviews *	N/A	2,587
99		
Computer Database	16,298	18,563
18,464		
Dictionary	31,905	52,340
64,352		
Encyclopedia	46,152	48,058
52,890		
ICPSR *	347	*****

INSPEC	38,148	67,844
84,636		
Journal List	34,882	49,921
59,470		
Library Catalog	313,482	684,661
757,615		
Magazine Index *	18,738	*****

Management Contents *	2,267	*****

Newspaper Index *	6,572	*****

Newspaper Abstracts	10,699	30,238
30,947		
Periodical Abstracts	30,874	83,535
96,834		
Who's Who at CMU	47,802	76,712
82,759		
Research Directory	N/A	N/A
4,121		
Materials Science	N/A	N/A
1,898		
TOTAL	624,635	1,161,726
1,315,763		

* this database is no longer on
LIS

**Teaching and Academic Support
Additional Facts and Figures**

**Pittsburgh Council of Higher Education (PCHE)
Units Taken by CMU Students,
By Level and College**

Academic Year 1993-94

Major/College	Units Taken			Units Taught
	Undergraduate	Graduate	Total	
CFA	876	165	1,041	144
CIT	401	114	515	354
GSIA	0	129	129	180
H&SS	1,117	342	1,459	507
IM	234	0	234	54
MCS	270	174	444	193
SCS	111	84	195	43
HNZ	0	224	224	342
OTHER	0	0	0	315
TOTAL	3,009	1,232	4,241	2,132

Pittsburgh Council of Higher Education (PCHE) Colleges:

Allegheny Community College	Duquesne University*	Point Park College*
Carlow College*	La Rouch College	Robert Morris
College		
Chatham College*	Pittsburgh Theological Sem.*	University of
Pittsburgh*		

*Units Taken by CMU Students

The University Teaching Center (UTC)

- Established in January 1982, the University Teaching Center identifies, organizes and conducts programs to improve the quality of instruction at CMU.
- Incoming Faculty Orientation - "Surviving, Enjoying, and Flourishing at Carnegie Mellon" is a three day faculty orientation that focuses on teaching effectively and on balancing the diverse roles of faculty life.
- Faculty Luncheon Seminars - Each semester the UTC offers a series of Luncheon Seminars to all members of the faculty. These seminars provide a forum for faculty to discuss issues about learning and teaching which transcend disciplinary boundaries.
- Feedback Mechanisms for Faculty: The Consultation Process - For faculty members interested in improving a course, the Teaching Center staff collects data, analyzes, interprets and then translates this into recommendations for specific strategies to modify the course of classroom behavior.
- Consultations about Course Evaluations - The Teaching Center recommends distributing early course evaluations 3-4 weeks into a semester to improve teaching and the course. They will aid faculty members in designing, interpreting, and acting upon the results of those evaluations.
- Creation and Implementation of Departmental and College TA Programs - The UTC aids departments and colleges in assessing their needs and creating TA programs to address those needs.

- Graduate Student Seminar Series - The UTC offers modules and special topic sessions on issues surrounding teaching and learning for those TA's currently teaching or planning to teach in the future.
- Response to the Changing Needs of Departments and College - The University Teaching Center offers expertise and resources to departments and colleges to meet their changing needs.

[\[Top of this page\]](#) [\[Fact Book Main Page\]](#) [\[Next Section: Faculty and Staff Data\]](#)

Last update: 7/12/95

CMU Faculty and Staff Data

CONTENTS

- [Full Time Employees by Division and Job Category \(1994\)](#)
- [Total Faculty by Department, Catagory, Status \(1994\)](#)
- [Full Time Regular Faculty by Rank, Department \(1994\)](#)
- [Full Time Regular Faculty by Tenure Status, Department, Sex \(1994\)](#)
- [Full Time Regular Faculty by Tenure Status, College \(1990-94\)](#)
- [Full Time Regular Faculty by Tenure Status, College - Graph \(1994\)](#)
- [Full Time Regular Faculty by Tenure Status - Graph \(1990-94\)](#)
- [Full Time Faculty Salary Indexed Growth - Graph \(1990-94\)](#)
- [Full Time Regular Faculty Average Salary \(1990-94\)](#)
- [Faculty Distribution by Sex, Race, Age \(1990-94\)](#)
- [Top Ten Institutions Granting Degrees to Faculty \(as of 1993\)](#)
- [Average Faculty Salary by Rank, Percent Change \(1994\)](#)

Full Time Employees By Division and Job Category Fall 1994

Category	Job						
	Reg.	Other	Sec./				
Tech./	Admin.	Faculty	Instr.	Resrch.	Profsn	Cler.	Parap.
Other	TOTAL						
Division							
President	6	1.00	0	0	2	5	0
0 14							
Provost							
CFA	14	77.00	32	5	2	18	20
0 168							
CIT	24	115.50	0	68	5	44	17
6 280							
GSIA	33	58.33	18	2	8	35	3
0 157							
H&SS	17	116.33	24	30	12	37	14
0 250							
MCS	47	100.00	13	116	23	32	24
2 357							

3 268	SEI	39	0.00	0	145	31	46	4
0 350	SCS	21	42.33	8	226	0	36	17
0	HNZ 67	13	28.00	2	3	2	16	3
Academic 11 Subtotal	1,897	208	537.50	97	595	83	264	102
1	Other 43 Provost	8	10.50	0	0	14	8	1
Provost Subtotal 12	1,940	216	548.00	97	595	97	272	103
Vice Provost 1	30	10	0.00	1	4	7	4	3
VP Applied 0	97	25	0.00	0	43	2	12	15
Research								
VP Computing 0	106	24	0.00	0	23	39	10	10
Services								
VP Business 68	262	46	0.00	13	0	59	74	2
Affairs & Planning								
Facilities 77	110	9	0.00	0	0	15	9	0
Management								
VP Development 0	57	34	0.00	0	0	6	17	0
VP Enrollment 49	146	34	0.00	16	0	12	35	0
Student Affairs 0	36	17	0.00	0	0	8	11	0
University 0	76	8	0.00	0	0	29	34	5

Libraries

VP University 0 61 Relations	12	0.00	1	0	17	22	9
TOTAL 207 2,935	441	549	128	665	293	505	147

**Total Faculty by Department,
Category, and Status
Fall Semester 1994**

		Regular	Research			
		Faculty	Faculty	Special		
		Full	Full	Full	Part	
Department						
CFA	Architecture	16.00	0.00	5.00	17.00	22.00
38.00	Art	16.00	0.00	7.00	18.00	25.00
41.00	Design	11.00	0.00	3.00	9.00	12.00
23.00	Drama	17.00	0.00	17.00	7.00	24.00
41.00	Music	16.00	0.00	4.00	51.00	55.00
71.00	Prep Sch	0.00	0.00	1.00	21.00	22.00
22.00	Ext					
2.00	Dean's Ofc.	1.00	0.00	0.00	2.00	
	3.00					
	TOTAL CFA	77.00	0.00	37.00	125.00	162.00
239.00						
CIT	Biomedical E.	0.00	0.00	1.00	2.00	
3.00						
3.00	Chemical E.	18.00	0.00	6.00	1.00	7.00
25.00	Civil E.	16.50	0.00	1.00	0.00	1.00
17.50	E & C E.	34.00	2.00	13.00	0.00	13.00
49.00						

11.00	EPP	6.00	4.00	1.00	0.00	1.00
35.00	Mechanical E.	24.00	0.00	9.00	2.00	11.00
29.00	MEMS	17.00	1.00	10.00	1.00	11.00
0.00	EDRC	0.00	5.00	0.00	0.00	
0.00	5.00					
0.00	Dean's Ofc.	0.00	0.00	0.00	0.00	
0.00	0.00					
174.50	TOTAL CIT	115.50	12.00	41.00	6.00	47.00
GSIA		58.33	0.00	23.00	11.00	34.00
92.33						
H&SS	English	25.00	0.00	5.00	13.00	18.00
43.00						
21.00	History	18.00	0.00	1.00	2.00	3.00
21.00	Mod. Lang.	7.00	1.00	1.00	12.00	13.00
15.00	Philosophy	13.00	1.00	1.00	0.00	1.00
43.00	Psychology	24.00	0.00	18.00	1.00	19.00
17.33	S & D S.	15.33	0.00	0.00	2.00	2.00
18.50	Statistics	14.00	0.50	4.00	0.00	4.00
1.00	Acad Adv Ctr.	0.00	0.00	0.00	1.00	
1.00	1.00					
1.00	CAAE	0.00	0.00	0.00	1.00	
1.00	1.00					
180.83	TOTAL H&SS	16.33	2.50	30.00	32.00	62.00
MCS	Biology	18.00	1.00	19.00	1.00	20.00
39.00						
36.00	Chemistry	22.00	0.00	14.00	0.00	14.00
41.00	Math	26.00	0.00	14.00	1.00	15.00
43.00	Physics	34.00	0.00	9.00	0.00	9.00
10.00	STC	0.00	0.00	10.00	0.00	10.00
0.00	Dean's Ofc.	0.00	0.00	0.00	0.00	
0.00	0.00					
169.00	TOTAL MCS	100.00	1.00	66.00	2.00	68.00

SCS	Comp. Sci.	37.33	22.00	27.00	1.00	28.00
87.33						
	Robotics	5.00	21.00	5.00	0.00	5.00
31.00						
	CMT	0.00	4.00	1.00	0.00	
1.00	5.00					
	ITC	0.00	0.00	1.00	0.00	
1.00	1.00					
	TOTAL SCS	42.33	47.00	34.00	1.00	35.00
124.33						
HNZ		28.00	1.00	6.00	16.00	22.00
51.00						
ACADEMIC SUBTOTAL		537.50	63.50	237.00	193.00	430.00
1,031.00						
ADMINISTRATIVE		11.50	2.50	10.00	7.00	17.00
31.00						
TOTAL		549.00	66.00	247.00	200.00	447.00
1,062.00						

*Includes special teaching, special research and visiting faculty.

**Full Time Regular Faculty
By Rank and Department
Fall Semester 1994**

		University	Full	Professor Associate	Assistant	Instructor
TOTAL						
College						
	Department					
CFA	Architecture	0.00	8.00	4.00	3.00	1.00
16.00						
	Art	0.00	6.00	9.00	1.00	0.00
16.00						
	Design	0.00	3.00	7.00	1.00	0.00
11.00						
	Drama	0.00	6.00	9.00	2.00	0.00
17.00						
	Music	1.00	5.00	7.00	3.00	0.00
16.00						

1.00	Dean's Ofc.	0.00	0.00	0.00	1.00	0.00
77.00	TOTAL CFA	1.00	28.00	36.00	11.00	1.00
0.00	CIT Biomedical E.	0.00	0.00	0.00	0.00	0.00
18.00	Chemical E.	0.00	11.50	2.50	4.00	0.00
16.50	Civil E.	1.00	8.50	6.00	1.00	0.00
34.00	E & C E.	0.00	26.00	4.00	4.00	0.00
6.00	EPP	0.00	4.00	2.00	0.00	0.00
24.00	Mechanical E.	0.00	11.00	4.00	5.00	4.00
17.00	MEMS	1.00	10.00	2.00	4.00	0.00
0.00	Dean's Ofc.	0.00	0.00	0.00	0.00	0.00
115.50	TOTAL CIT	2.00	71.00	20.50	18.00	4.00
58.33	GSIA	4.00	16.33	17.00	18.00	3.00
25.00	H&SS English	0.00	11.00	6.00	8.00	0.00
18.00	History	0.00	9.00	6.00	3.00	0.00
7.00	Mod. Lang.	0.00	2.00	1.00	4.00	0.00
13.00	Philosophy	0.00	5.00	4.00	4.00	0.00
24.00	Psychology	1.00	13.00	3.00	7.00	0.00
15.33	S & D S.	2.00	4.33	3.00	6.00	0.00
14.00	Statistics	0.00	6.00	4.00	4.00	0.00
116.33	TOTAL H&SS	3.00	50.33	27.00	36.00	0.00
18.00	MCS Biology	0.00	8.00	7.00	3.00	0.00
22.00	Chemistry	0.00	11.00	5.00	6.00	0.00
26.00	Math	1.00	17.00	6.00	2.00	0.00
34.00	Physics	2.00	22.00	8.00	2.00	0.00

100.00	TOTAL MCS	3.00	58.00	26.00	13.00	0.00
37.33	SCS Comput. Sci.	1.00	14.33	9.00	13.00	0.00
5.00	Robotics	1.00	1.00	0.00	3.00	0.00
42.33	TOTAL SCS	2.00	15.33	9.00	16.00	0.00
28.00	HNZ	0.00	10.00	5.00	12.00	1.00
537.50	ACADEMIC SUBTOTAL	15.00	249.00	140.50	124.00	9.00
11.50	ADMINISTRATIVE	1.00	10.00	0.50	0.00	0.00
549.00	TOTAL	16.00	259.00	141.00	124.00	9.00

**Full-Time Regular Faculty
By Tenure Status, Department and Sex
Fall Semester 1994**

Instructors	Tenured			Tenure Stream						
	TOTAL	M	F	TOT	M	F	TOT	M	F	
College										
TOT	Department	M	F	TOT	M	F	TOT	M	F	
	M F	TOT								
CFA	Architecture	7.00	1.00	8.00	7.00	0.00	7.00	1.00	0.00	1.00
15.00	1.00 16.00									
9.00	Art	5.00	6.00	11.00	4.00	1.00	5.00	0.00	0.00	0.00
	7.00 16.00									
10.00	Design	7.00	0.00	7.00	2.00	1.00	3.00	1.00	0.00	1.00
	1.00 11.00									
11.00	Drama	7.00	3.00	10.00	4.00	3.00	7.00	0.00	0.00	0.00
	6.00 17.00									
10.00	Music	7.00	4.00	11.00	3.00	2.00	5.00	0.00	0.00	0.00
	6.00 16.00									
1.00	Dean's Ofc.	0.00	0.00	0.00	1.00	0.00	1.00	0.00	0.00	0.00
	0.00 1.00									
56.00	TOTAL CFA	33.00	14.00	47.00	21.00	7.00	28.00	2.00	0.00	2.00
	21.00 77.00									
CIT	Biomedical E.	0.00	0.00	0.00	0.00	0.00	0.00	0.00	0.00	0.00

0.00	0.00	0.00										
			Chemical E.	12.00	0.00	12.00	5.00	1.00	6.00	0.00	0.00	0.00
17.00	1.00	18.00										
			Civil E.	8.50	1.00	9.50	5.00	2.00	7.00	0.00	0.00	0.00
13.50	3.00	16.50										
			E & C E.	26.00	0.00	26.00	6.00	1.00	7.00	1.00	0.00	1.00
33.00	1.00	34.00										
			EPP	3.00	0.00	3.00	1.00	1.00	2.00	1.00	0.00	1.00
5.00	1.00	6.00										
			Mechanical E.	13.00	0.00	13.00	6.00	1.00	7.00	4.00	0.00	4.00
23.00	1.00	24.00										
			MEMS	10.00	0.00	10.00	5.00	1.00	6.00	1.00	0.00	1.00
16.00	1.00	17.00										
			Dean's Ofc.	0.00	0.00	0.00	0.00	0.00	0.00	0.00	0.00	0.00
0.00	0.00	0.00										
			TOTAL CIT	72.50	1.00	73.50	28.00	7.00	35.00	7.00	0.00	7.00
107.50	8.00	115.50										
GSIA				24.33	1.00	25.33	25.00	4.00	29.00	3.00	1.00	4.00
52.33	6.00	58.33										
H&SS	English			11.00	5.00	16.00	2.00	7.00	9.00	0.00	0.00	0.00
13.00	12.00	25.00										
			History	12.00	2.00	14.00	1.00	3.00	4.00	0.00	0.00	0.00
13.00	5.00	18.00										
			Mod. Lang.	1.00	1.00	2.00	2.00	3.00	5.00	0.00	0.00	0.00
3.00	4.00	7.00										
			Philosophy	7.00	1.00	8.00	5.00	0.00	5.00	0.00	0.00	0.00
12.00	1.00	13.00										
			Psychology	11.00	5.00	16.00	4.00	4.00	8.00	0.00	0.00	0.00
15.00	9.00	24.00										
			S & D S.	6.33	2.00	8.33	6.00	1.00	7.00	0.00	0.00	0.00
12.30	3.00	15.33										
			Statistics	7.00	1.00	8.00	5.00	1.00	6.00	0.00	0.00	0.00
12.00	2.00	14.00										
			TOTAL H&SS	55.33	17.00	72.33	25.00	19.00	44.00	0.00	0.00	0.00
80.33	36.00	116.33										
MCS	Biology			13.00	1.00	14.00	4.00	0.00	4.00	0.00	0.00	0.00
17.00	1.00	18.00										
			Chemistry	15.00	0.00	15.00	5.00	2.00	7.00	0.00	0.00	0.00
20.00	2.00	22.00										
			Math	20.00	1.00	21.00	5.00	0.00	5.00	0.00	0.00	0.00
25.00	1.00	26.00										
			Physics	27.00	0.00	27.00	6.00	1.00	7.00	0.00	0.00	0.00
33.00	1.00	34.00										
			TOTAL MCS	75.00	2.00	77.00	20.00	3.00	23.00	0.00	0.00	0.00
95.00	5.00	100.00										
SCS	Comp. Sci.			18.33	2.00	20.33	15.00	2.00	17.00	0.00	0.00	0.00
33.33	4.00	37.33										

5.00	Robotics	3.00	0.00	3.00	2.00	0.00	2.00	0.00	0.00	0.00
0.00	5.00									
38.33	TOTAL SCS	21.33	2.00	23.33	17.00	2.00	19.00	0.00	0.00	0.00
	4.00	42.33								
21.00	HNZ	10.00	1.00	11.00	11.00	5.00	16.00	0.00	1.00	1.00
7.00	28.00									
ACADEMIC										
450.50	SUBTOTAL	291.50	38.00	329.50	147.00	47.00	94.00	12.00	2.00	14.00
87.00	537.50									
11.50	ADMIN.	9.50	0.00	9.50	0.00	0.00	0.00	2.00	0.00	2.00
0.00	11.50									
462.00	TOTAL	301.00	38.00	339.00	147.00	47.00	194.00	14.00	2.00	16.00
87.00	549.00									

**Full-Time Regular Faculty
By Tenure Status and College
Fall Semesters 1990 to 1994**

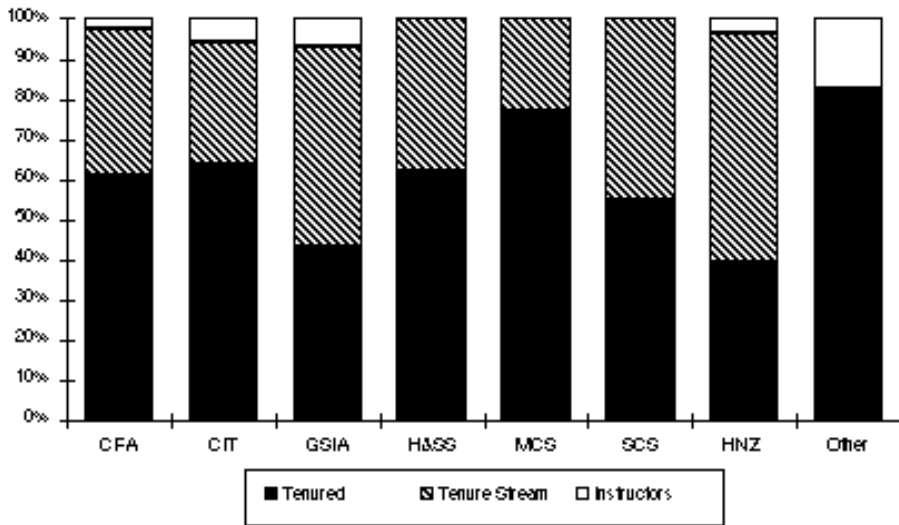
College		1990	1991	1992	1993
1994	Tenure Status				
CFA	Tenured	41.50	37.50	39.50	42.50
47.00	Tenure Stream	49.00	48.00	49.00	39.00
28.00	Instructors	1.30	1.00	2.00	1.00
2.00	Total	91.80	86.50	90.50	82.50
77.00					
CIT	Tenured	69.95	69.45	72.45	70.75
73.50	Tenure Stream	49.50	47.00	43.50	41.50
35.00	Instructors	0.00	1.00	1.00	1.00
7.00	Total	119.45	117.45	116.95	113.25
115.50					
GSIA	Tenured	30.42	30.25	28.25	28.25
25.33	Tenure Stream	35.00	31.00	30.00	29.00
29.00	Instructors	1.00	1.00	2.00	3.00

4.00					
	Total	66.42	62.25	60.25	60.25
58.33					
	H&SS Tenured	65.25	62.50	68.75	70.00
72.33					
	Tenure Stream	41.00	46.00	38.50	39.50
44.00					
	Instructors	0.00	1.00	0.00	1.00
0.00					
	Total	106.25	109.50	107.25	110.50
116.33					
	MCS Tenured	74.30	72.30	76.30	76.00
77.00					
	Tenure Stream	25.00	23.00	21.00	22.00
23.00					
	Instructors	0.00	0.00	0.00	0.00
0.00					
	Total	99.30	95.30	97.30	98.00
100.00					
	SCS Tenured	19.50	18.00	18.00	21.00
23.33					
	Tenure Stream	20.00	15.00	21.00	22.00
19.00					
	Instructors	0.00	0.00	1.00	0.00
0.00					
	Total	39.50	33.00	40.00	43.00
42.33					
	HNZ Tenured	10.58	8.50	8.75	12.00
11.00					
	Tenure Stream	14.50	19.00	18.00	16.00
16.00					
	Instructors	1.70	0.00	0.00	1.00
1.00					
	Total	26.78	27.50	26.75	29.00
28.00					
ACADEMIC					
SUBTOTAL					
	Tenured	311.50	298.50	312.00	320.50
329.50					
	Tenure Stream	234.00	229.00	221.00	209.00
194.00					
	Instructors	4.00	4.00	6.00	7.00
14.00					
	Total	549.50	531.50	539.00	536.50
537.50					

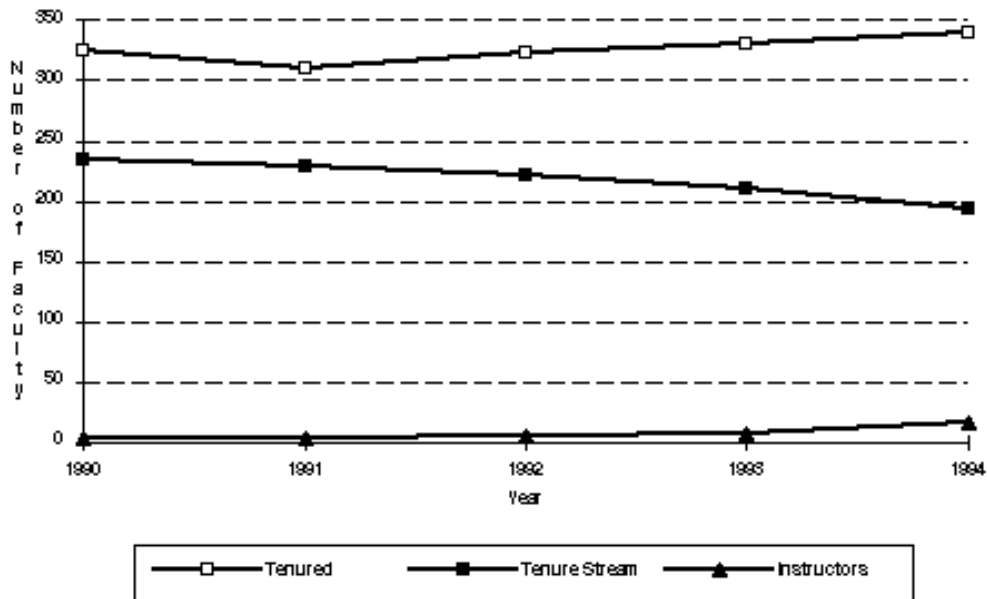
ADMINISTRATIVE

9.50	Tenured	13.50	12.50	11.00	9.50
0.00	Tenure Stream	0.00	0.00	1.00	1.00
2.00	Instructors	0.00	0.00	0.00	0.00
11.50	Total	13.50	12.50	12.00	10.50
339.00	CMU Tenured	325.00	311.00	323.00	330.00
194.00	Tenure Stream	234.00	229.00	222.00	210.00
16.00	Instructors	4.00	4.00	6.00	7.00
549.00	Total	563.00	544.00	551.00	547.00

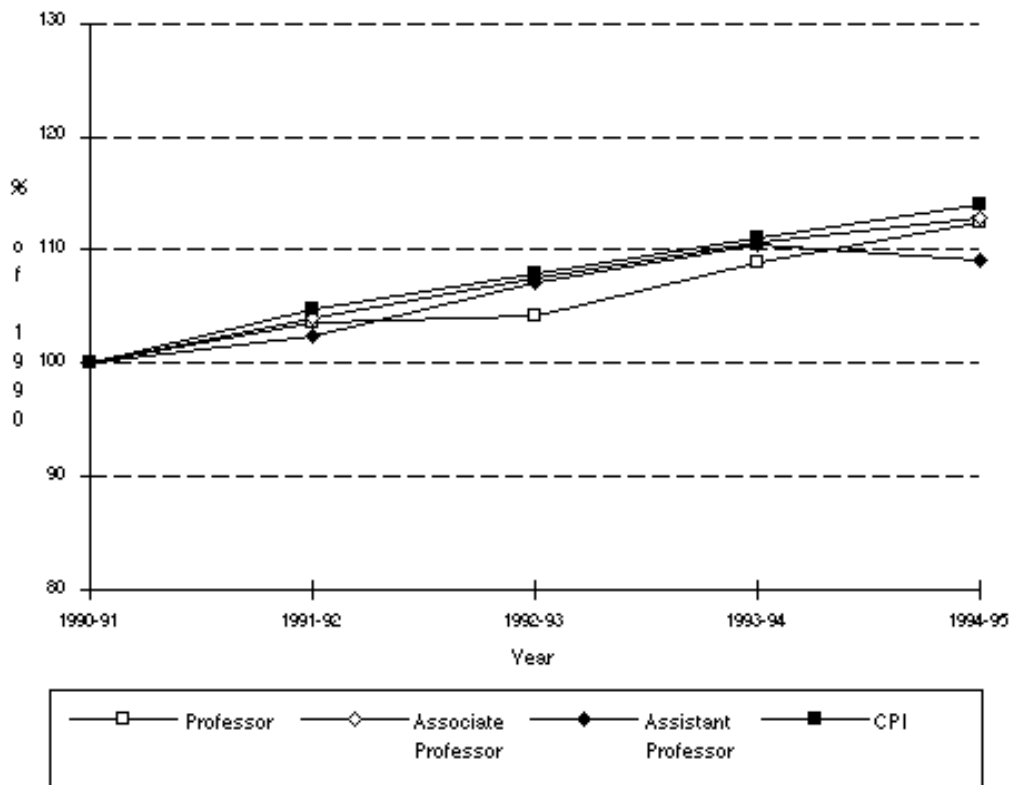
**Full-Time Regular Faculty
By Tenure Status and College
Fall Semester 1994**



**Full-Time Regular Faculty
By Tenure Status
Fall Semester 1990 to 1994**



**Faculty Salaries Indexed Growth
Full Time Regular Faculty
Academic Years 1990-91 to 1994-95**



**Average Faculty Salaries
Full-Time Regular Faculty
Academic Years 1990-91 to 1994-95**

	1990-91	1991-92	1992-93	1993-
94 1994-95				
Professor	\$76,100	\$78,900	\$79,300	
\$82,900 \$85,500				
Associate Professor	\$51,100	\$53,100	\$55,000	
\$56,600 \$57,700				
Assistant Professor	\$46,100	\$47,200	\$49,400	
\$50,900 \$50,300				

**Regular Faculty
Additional Facts and Figures**

**Distribution by Sex, Race, and Age
Fall 1990 to 1994**

Percent of Faculty by Sex	1990	1991	1992	1993	1994
Male	85%	85%	84%	84%	84%
Female	15%	15%	16%	16%	16%

Percent of Faculty by Race

Asian	4%	3%	3%	3%	3%
Black	1%	1%	1%	1%	1%
Hispanic	1%	1%	1%	1%	1%
White	77%	77%	77%	76%	77%
Non-U.S. ,itizen	17%	18%	18%	19%	18%

Percent of Faculty by Age

Under 30	4%	4%	3%	1%	1%
30 to 39	36%	34%	34%	32%	33%
40 to 49	31%	31%	33%	35%	34%
50 to 59	17%	19%	18%	20%	20%
60 and over	12%	12%	12%	12%	12%

**Top Ten Institutions Granting Degrees to Faculty
Fall 1993**

Carnegie Mellon University	52	University of Michigan, Ann Arbor
18		

Massachusetts Institute of Technology	43	Yale
University	17	
Stanford University	32	Cornell
University	16	
University of California, Berkeley	31	University of
Pennsylvania	14	
Harvard University	21	University of
Chicago	13	
		University of
California	13	

49% of the Regular Faculty received degrees from the above institutions.

92% of the Regular Faculty hold a Ph.D. or terminal degree

Average Faculty Salaries by Rank, Fall 1994

Percent Change in Faculty Salaries

Fall 1990 to Fall 1994

	Prof.		%change		Assoc.		%change		Asst.
\$	\$				\$				
	%change								
CMU	\$82,900	7th	17	8th	\$56,600	6th	15	9th	\$49,900
5th 15 9th									
Princeton	\$96,300		27		\$56,400		19		
\$43,700	20								
Stanford	\$95,200		20		\$65,800		19		
\$51,900	18								
MIT	\$90,300		19		\$63,700		19		
\$52,800	20								
U. of Chicago	\$89,400		23		\$58,600		24		
\$51,500	24								
U. of Penn	\$88,100		20		\$62,200		19		
\$53,200	21								
Northwestern	\$86,000		24		\$59,600		26		
\$49,600	19								
Cornell	\$78,700		17		\$56,200		21		
\$48,200	22								
U. of Rochest.	\$74,700		12		\$52,000		13		
\$43,400	7								
Wash. U.	\$78,200		25		\$53,400		17		
\$45,100	24								
RPI	\$75,000		13		\$54,800		14		
\$47,500	15								

[\[Top of this page\]](#) [\[Fact Book Main Page\]](#) [\[Next Section: Alumni Data\]](#)

Last update: 7/12/95

CMU Alumni Data

CONTENTS

[Active Alumni by Region and State As of November 1994.](#)

[Active Alumni Additional Facts and Figures As of November 1994.](#)

**Active Alumni
By Region and State
As of November 1994**

Region/State	Region/State	Region/State	Region/State			
New England	South	Midwest	West			
Connecticut	946	Arkansas	47	Illinois	1174	
Alaska	24					
Maine	122	Alabama	140	Indiana	378	
California	4357					
Massachusetts	1717	Florida	1812	Iowa	71	
Colorado	464					
New Hampshire	206	Georgia	494	Kansas	123	
Hawaii	74					
Rhode Island	109	Kentucky	166	Michigan	896	
Idaho	60					
Vermont	103	Louisiana	136	Minnesota	292	
Montana	13					
TOTAL	3203	Mississippi	42	Missouri	262	
Nevada	71					
Percent of Total	7%	North Carolina	786	Nebraska	36	
Oregon	251					
		South Carolina	333	North Dakota	8	
Utah	58					
Middle States	Tennessee	263	South Dakota	14		
Washington	497					
	Virginia	1618	Wisconsin	241		
Wyoming	23					
Delaware	256	TOTAL	5837	TOTAL	3495	
TOTAL	5892					
Dist. of Columbia	339	Percent of Total	12%	Percent of Total	7%	Percent of
Total	12%					
Maryland	1858					
New Jersey	2251	Southwest				
New York	4045					
Ohio	2312	Arizona	428	U.S. Territories	35	U.S. TOTAL
46,837						
Pennsylvania	15,110	New Mexico	195			Percent of
Total	96%					
West Virginia	285	Oklahoma	86			
TOTAL	26,456	Texas	1210			Foreign Countries
2018						
Percent of Total	54%	TOTAL	1919			Percent of
Total	4%					

Percent of Total 4%

TOTAL

48,855

**Active Alumni
Additional Facts and Figures
As of November 1994**
Active Alumni* by Major U.S. Cities

Greater Pittsburgh Area**	12,302	Akron	558
Metro New York***	4,459	Houston	515
Washington, D.C.	3,114	Atlanta	493
San Francisco	1,885	Denver	465
Los Angeles	1,883	Harrisburg	454
Philadelphia	1,671	Phoenix	428
Boston	1,586	Dallas	401
Baltimore	1,007	Seattle	347
Chicago	976	Ft. Lauderdale	340
Princeton	778	Columbus	313
Cleveland	759	San Diego	308
Detroit	655	Cincinnati	280
Hartford	601	Minneapolis/St. Paul	244
		Buffalo	235

* Active Alumni includes all alumni who maintain a current address with

CMU.

** Includes Altoona, Beaver County, Westmoreland County and Metro Pittsburgh

area.

*** Includes Long Island, Fairfield/Westchester and North New Jersey

Active Alumni by College

CFA	8,499	Margaret Morrison	3,934
CIT	16,711	MCS	5,797
GSIA	3,569	Printing Management	703
H&SS	4,535	SCS	403
IM	2,076	HNZ	1,878
Industries	178	Robotics & INI	133
Libraries	436	Unspecified	3
		Total	48,855

Active Alumni by Class Year in Decades

1909 - 1919	30	1960 - 1969	7,225
1920 - 1929	497	1970 - 1979	8,543
1930 - 1939	2,212	1980 - 1989	12,354
1940 - 1949	4,149	1990 - 1993	7,720
1950 - 1959	6,125		

Total

48,855

[\[Top of this page\]](#) [\[Fact Book Main Page\]](#) [\[Next Section: Financial Data\]](#)

Last update: 7/12/95

	HNZ	14,200	15,000	15,500
16,700	17,900			

* Tuition is for a 14 month program.

Student Activities Fee		\$90	\$100	\$100
\$100	\$100			

**Room and Board
Academic Years 1990-91 to 1994-95**

	1990-91	1991-92	1992-93	1993-94
1994-95				
Average Room (Standard Double)	\$2,800	\$3,010	\$3,210	
\$3,400	\$3,510			
Average Board	\$2,006	\$2,126	\$2,000	
\$2,100	\$2,170			
(19 Meal Plan 90-91, 91-92)				
(Constant Pass 1992-93 through 1994-95)				

**Total Estimated Cost* of Attending CMU
Academic Years 1990-91 to 1994-95**

	1990-91	1991-92	1992-93	1993-94
1994-95				
Resident	\$20,200	\$21,910	\$22,560	\$23,630
\$24,540				
Commuter	\$16,300	\$18,050	\$18,890	\$20,105
\$21,050				

*Cost includes: tuition and activities fee, books and supplies, incidentals,

room
 and board for on-campus residents and lunches
 and
 transportation for
 commuters.

**Current Funds, Revenues, Expenditures, and Transfers
 Fiscal Years 1990 to 1994**

Current Funds
 Revenues

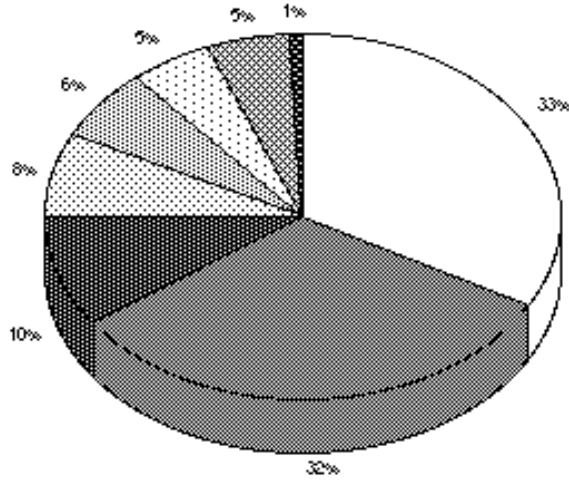
Revenues		1990	1991	1992	
1993	1994				
	Tuition and Fees	\$87,994	\$95,731	\$103,958	\$108,256
\$118,988					
	Endowment Distribution	\$15,429	\$18,081	\$20,934	\$22,898
\$22,434					
	Current Fund Investments/Earnings	\$3,631	\$3,198	\$2,568	
\$2,334	\$2,414				
	Gifts & Grants	\$15,864	\$16,964	\$18,248	\$15,455
\$18,035					
	Sponsored Research	\$122,613	\$127,829	\$136,904	\$146,727
\$150,709					
	Auxiliary Services	\$23,358	\$25,123	\$26,315	\$26,826
\$27,279					
	Miscellaneous Income	\$13,191	\$15,674	\$16,530	\$15,066
\$18,978					
TOTAL REVENUES		\$282,080	\$302,600	\$325,457	\$337,562
\$358,837					

Current Funds Expenditures and
 Transfers

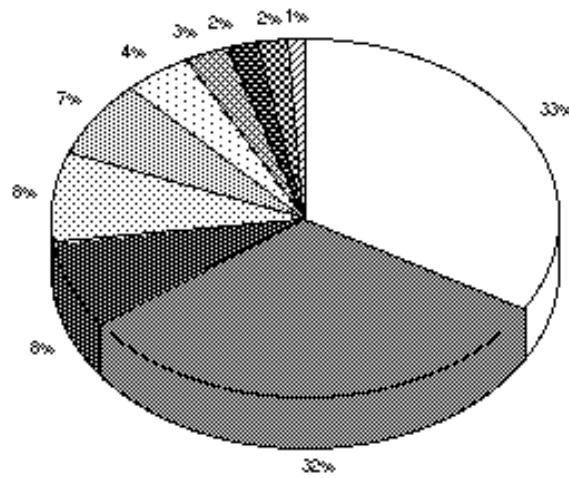
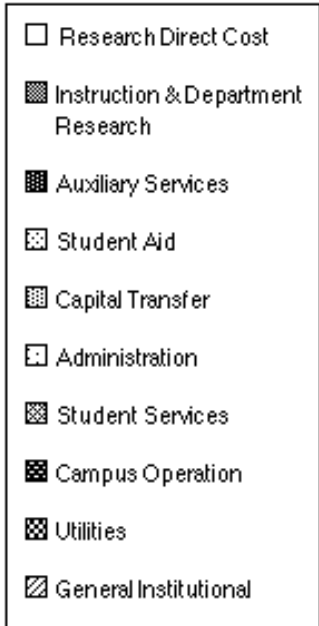
		1990	1991	1992	
1993	1994				
Expenditures (by Functions)					
	Instruction & Department Research	\$81,305	\$89,827	\$93,702	\$101,466
\$108,998					
	Academic Support	\$19,250	\$19,325	\$20,688	\$21,022
\$23,775					
	Sponsored Research - Direct Costs	\$94,163	\$98,744	\$104,295	\$109,238

\$114,853					
	Student Aid	\$17,574	\$18,403	\$21,366	\$23,682
\$28,944					
	Campus Operation	\$7,622	\$6,953	\$7,111	\$6,782
\$7,227					
	Utilities	\$5,624	\$5,468	\$5,895	\$5,477
\$5,826					
	Administration	\$11,150	\$11,934	\$13,253	\$13,114
\$13,600					
	Student Services	\$7,326	\$8,193	\$8,655	\$9,191
\$9,884					
	General Institutional	\$6,653	\$7,640	\$4,706	\$5,064
\$3,751					
	Auxiliary Services	\$23,361	\$25,732	\$26,587	\$26,618
\$27,060					
TOTAL		\$274,028	\$292,219	\$306,258	\$321,654
\$343,918					
Transfers					
	Capital	\$9,859	\$8,616	\$14,536	\$13,739
\$14,182					
	Other	(\$658)	\$278	\$666	\$355
(\$1,607)					
	TOTAL	\$9,201	\$8,894	\$15,202	\$14,094
\$12,575					
TOTAL EXPENDITURES and TRANSFERS		\$283,229	\$301,113	\$321,460	\$335,748
\$356,493					

Distribution of Current Funds Revenues
Fiscal Year 1994
(Total = \$358,837,000)



**Distribution of Current Funds Expenditures and Transfers
Fiscal Year 1994
(Total = \$356,493,000)**



**Total Sponsored Research Costs
By College and Research Center
Fiscal Years 1990 to 1994
(Dollars in Thousands)**

Direct Costs 1994	1990	1991	1992	1993
CIT	\$16,066	\$16,999	\$18,281	\$16,559

\$18,663				
CFA	571	766	434	385
543				
H&SS	5,266	5,052	5,248	5,456
5,989				
MCS	15,306	15,397	15,768	17,988
19,239				
SCS	26,505	26,455	25,876	27,027
31,107				
GSIA	546	1,053	1,534	1,807
1,734				
HEINZ	626	735	811	930
797				
CMRI	6,012	6,881	6,760	7,492
5,396				
SEI	21,978	24,914	29,363	31,013
30,924				
WPATC	548	0	0	0
0				
Other	739	492	220	581
465				
TOTAL	\$94,163	\$98,744	\$104,295	\$109,238
\$114,857				

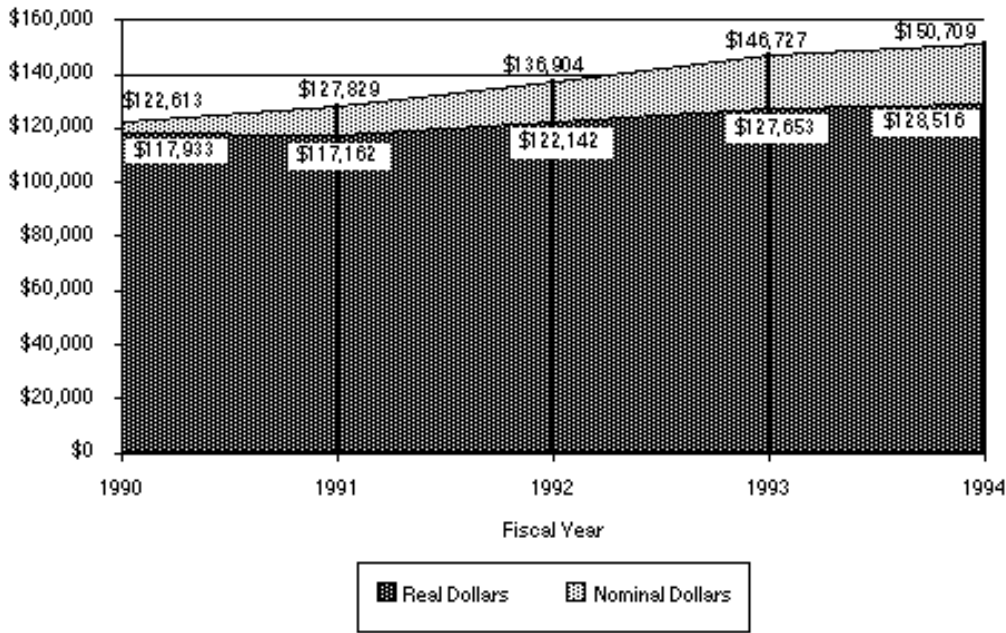
Indirect Costs

CIT	\$6,123	\$6,127	\$6,530	\$6,709
\$7,036				
CFA	149	139	94	145
228				
H&SS	1,638	1,577	1,668	1,751
1,893				
MCS	4,981	5,527	5,936	6,651
7,367				
SCS	9,578	9,619	11,110	13,352
13,436				
GSIA	245	489	513	713
758				
HEINZ	245	252	277	378
389				
CMRI	2,856	3,035	3,209	3,597
2,561				
SEI	2,316	2,225	3,189	4,059
1,969				
WPATC	0	0	0	0
0				
Other	319	95	83	137
215				
TOTAL	\$28,450	\$29,085	\$32,609	\$37,492
\$35,852				

Total Sponsored Research
Costs

CIT	\$22,189	\$23,126	\$24,811	\$23,268
\$25,699				
CFA	720	905	528	530
771				
H&SS	6,904	6,629	6,916	7,207
7,882				
MCS	20,287	20,924	21,704	24,639
26,606				
SCS	36,083	36,074	36,986	40,379
44,543				
GSIA	791	1,542	2,047	2,520
2,492				
HEINZ	871	987	1,088	1,308
1,186				
CMRI	8,868	9,916	9,969	11,089
7,957				
SEI	24,294	27,139	32,552	35,072
32,893				
WPATC	548	0	0	0
0				
Other	1,058	587	303	718
680				
TOTAL	\$122,613	127,829	\$136,904	\$146,730
\$150,709				

Sponsored Research Costs
Real versus Nominal Growth
Fiscal Years 1990 to 1994



Real dollars calculated using the 2nd quarter implicit price deflator with 1990 as the base year.

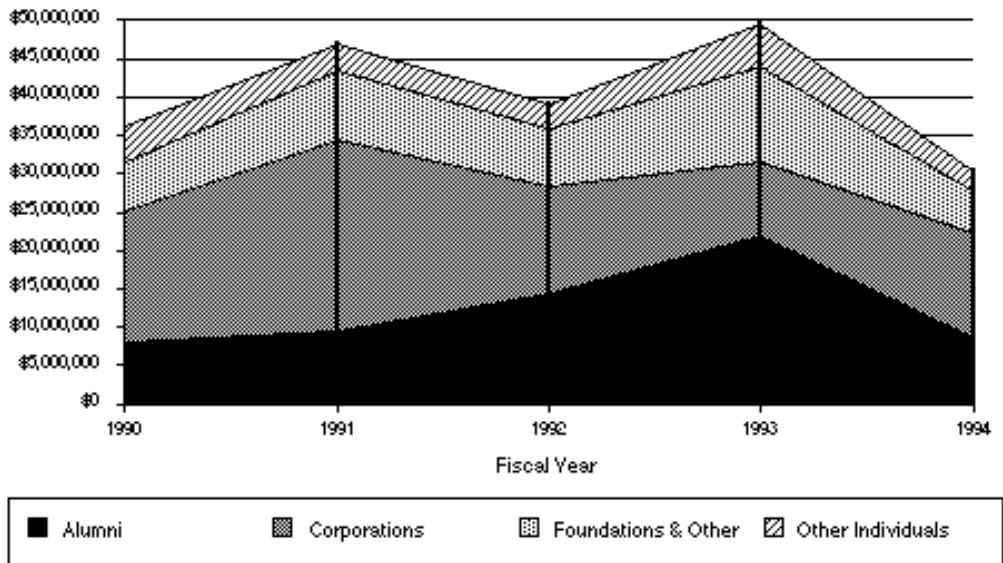
**Total Sponsored Research Costs by Agency
Fiscal Years 1990 to 1994**

	1990	1991	1992	1993	1994
Federal					
Defense	\$54,882,486	\$54,309,793	\$60,157,000	\$65,841,000	\$64,557,000
National Science Foundation	20,269,542	21,070,932	25,241,000	30,933,000	27,840,000
Health & Human Services	7,230,473	7,805,456	6,787,000	8,853,000	7,534,000
Energy	4,247,083	3,876,166	3,441,000	6,081,000	4,726,000
NASA	N/A	N/A	N/A	4,721,000	N/A
Other Federal	2,213,786	5,383,455	6,795,000	4,009,000	9,081,000
TOTAL	\$88,843,370	\$92,445,802	\$102,421,000	\$120,438,000	\$113,738,000
Non-Federal					
Industrial	\$20,139,928	\$20,382,774	\$18,998,000	\$14,237,000	\$18,237,000
Other Non-Federal	13,630,005	14,999,978	15,485,000	16,034,000	14,752,000

TOTAL \$33,769,933 \$35,382,752 \$34,483,000 \$32,989,000
 \$30,271,000

TOTAL \$122,613,303 \$127,828,554 \$136,904,000 \$146,727,000
 \$150,709,000

**Total Giving by Source
 Nominal Dollars
 Fiscal Years 1990 to 1994**



**Voluntary Support
 By Source and Purpose
 Fiscal Years 1990 to 1994**

	1990	1991	1992	1993	1994
Current Operations					
Alumni	N/A	\$4,366,563	\$4,786,556	\$1,955,531	
Other Individuals	N/A	1,329,170	1,555,594		
(Includes Parents of Students)	N/A	N/A	N/A		
Foundations & Other	N/A	5,433,231	4,569,194	4,754,060	
Corporations	N/A	4,390,435	4,609,945	3,291,248	
TOTAL		\$12,424,910	\$15,519,399	\$15,521,289	\$11,132,861

\$11,775,278

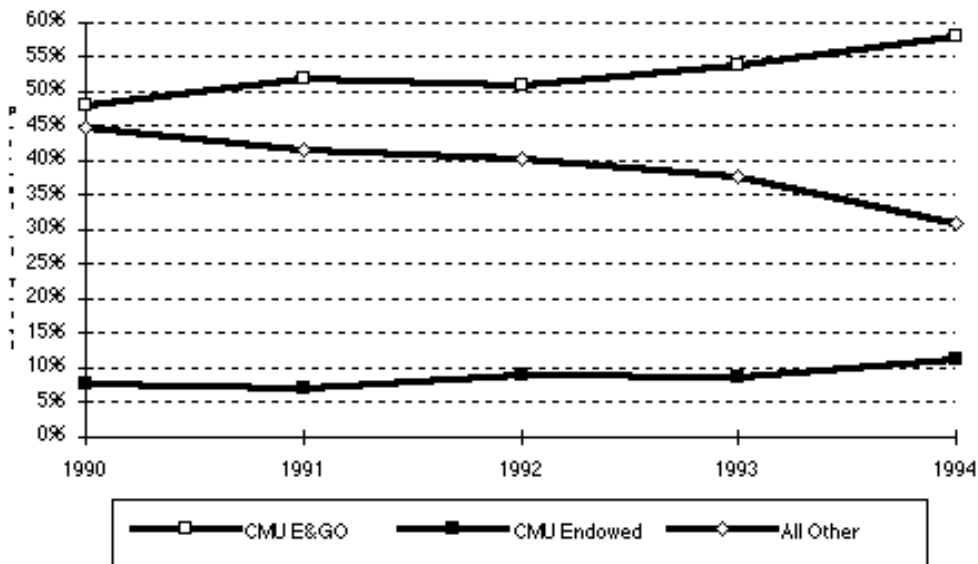
Capital					
Alumni	N/A	\$5,178,961	\$9,696,973	\$19,968,379	
\$6,059,242					
Other Individuals	N/A	1,994,553	1,588,705	4,467,880	
1,972,317					
(Includes Parents	N/A	N/A	N/A		
24,640					
65,586					
of					
Students)					
Foundations & Other	N/A	3,660,000	3,117,770		
7,675,901					
830,189					
Corporations	N/A	20,511,037	9,169,830	6,448,938	
9,834,473					
TOTAL		\$23,694,860	\$31,344,551	\$23,573,278	\$38,561,098
\$18,696,221					

Total					
Giving					
Alumni	\$8,155,695	\$9,545,524	\$14,483,529	\$21,923,910	
\$8,489,582					
Other Individuals	4,630,389	3,323,723	3,144,299	5,599,902	
2,719,996					
(Includes Parents	N/A	N/A	N/A		
184,448					
234,479					
of					
Students)					
Foundations & Other	6,341,151	9,093,231	7,686,964	12,429,961	
5,607,805					
Corporations	16,992,535	24,901,472	13,779,775	9,740,186	
13,654,116					
TOTAL	\$36,119,770	\$46,863,950	\$39,094,567	\$49,693,959	
\$30,471,499					

N/A - Not Available
Education,
Education

Source: Survey of Voluntary Support of
Council for Financial Aid to

**Undergraduate Scholarships and Grants
By Source, Percent of Total
Fiscal Years 1990 to 1994**



*All other includes Federal, State and Other Grant Resources

**Undergraduate Financial Aid Resources
By Source
Fiscal Years 1990 to 1994
(Dollars In Thousands)**

	1990	1991	1992	1993	1994
Scholarships & Grants					
Federal - PELL	\$1,085	\$1,018	\$1,231	\$1,361	\$1,470
Federal - SEOG	1,677	1,684	1,745	1,819	1,987
State - PHEAA	1,434	1,462	1,492	1,501	1,527
Other State Grants	153	114	108	150	105
CMU E&GO	9,785	11,000	12,758	14,398	17,923
CMU Endowed	1,547	1,463	2,243	2,313	3,419
CMU Gifts and Grants	289	312	274	231	166
ROTC	1,901	2,255	2,610	2,673	2,070
Other Grant Resources	2,596	1,941	2,682	2,345	2,214
TOTAL	\$20,467	\$21,249	\$25,143	\$26,791	\$30,881

Self-Help

Workstudy	\$1,713	\$1,438	\$1,449	\$1,507	
\$1,498					
Loans	9,150	7,610	8,196	8,418	
10,166					
TOTAL	\$10,863	\$9,048	\$9,645	\$9,925	\$11,664
TOTAL	\$31,330	\$30,297	\$34,788	\$36,716	\$42,545
% of Undergraduates with Need	63.9%	65.0%	60.0%	70.0%	
70.0%					

Finances Additional Facts and Figures

**Undergraduate Tuition Comparison by Benchmark Competitors
Academic Year 1994-95**

Board	School	Tuition & Fees	Room &
\$5,680	Carnegie Mellon	\$18,000	
Tier 1	MIT	20,100	
5,975	Princeton	19,900	
5,910	Cornell	19,066	
6,148	Univ. of Penn	18,856	
7,270	Stanford	18,669	
6,795			
Avg. Tier 1		\$19,318	
\$6,420			
Tier 2	Univ. of Chicago	19,236	
6,380	Washington Univ.	18,534	
5,843	RPI	18,030	
5,975	Univ. of Rochester	18,260	
6,583	Northwestern	16,404	
5,520			
Avg. Tier 2		\$18,093	
\$6,060			

Double Room - 21 meals/week

CMU-Double Room-Constant Pass

Source: College

Cost Book

**Carnegie Mellon Tuition Benefits
Fiscal Years 1990 to 1994
(Dollars in Thousands)**

		1990	1991	1992
1993	1994			
	Total	\$3,151	\$3,523	\$3,555
\$3,599	\$4,035			

**Endowment Statistics
Fiscal Years 1990 to 1994
(Dollars in Thousands)**

		1990	1991	1992
1993	1994			
	Book Value	\$277,780	\$294,030	\$310,706
\$389,714				\$346,601
	Market Value	299,168	313,330	361,091
404,531	414,700			
	Life Income Funds	21,485	20,418	22,091
25,036	24,120			
	Rank	41	44	41
41	38			
	Endowment/FTE	\$47,180	\$48,410	\$55,320
\$62,767	\$63,471			
	Student Rank*	81	83	83
87	N/A*			

*Private Institutions Only

**Carnegie Mellon National Rank
Research and Development Funds
Academic Science and Engineering
Fiscal Years 1990 to 1994**

		1989	1990	1991
1992	1993			

	Total R&D	50th	53rd	55th
55th	N/A*			
	Total R&D Among	17th	18th	19th
19th	N/A*			
	Privates			
	Industry Sponsored	8th	9th	10th
10th	N/A*			
	R&D			

Source: NACUBO Endowment Reports

*Note: Not yet

available

[\[Top of this page\]](#) [\[Fact Book Main Page\]](#) [\[Next Section: Space and Facilities Data\]](#)

Last update: 7/12/95

CMU Space and Facilities Data

CONTENTS

[Total Space in Square Footage By Major Division, College/Division, and Use.](#)

[Total Space in Square Footage By Major Division, College/Division, and Building.](#)

[Net Assignable Space By Major Use and Division \(Graph\).](#)

[Parking Capacity 1991 to 1995.](#)

[Housing Capacity By Units, Beds Available and Filled.](#)

Total Space in Square Footage By Major Division, College/Division, and Use Category

Use Category

Lnge.	Study	Classroom Shops/Veh. & Serv.	Labs Studios & Serv.	Office Housing & Serv.	Conf./Mtg. Other Asmby./Exh.	Food/ TOTAL Merch./Serv.
Data Proc.	Food & Gen.					
Serv.						

Major Division College/Division

President		0	0	4,005		1,235
0	0	12		0	0	5,252
Provost						
CIT		1,179	111,281	90,192		6,296
5,622	6,134		10,698	0	9,698	241,090
CFA		16,651	105,290	36,589		12,502
181	2,453		11,381	0	1,522	186,569
HSS		1,910	13,815	65,181		3,099
1,266	1,173		1,187	0	173	87,804
MCS		1,105	132,287	74,321		4,779
1,996	5,886		11,229	0	2,152	233,755
SCS		4,692	38,389	75,183		7,473
1,986	12,755		2,045	0	729	143,252
GSIA		12,694	2,033	34,788		2,251
5,031	8,177		155	0	0	65,129
HNZ		577	3,127	19,741		1,157
1,306	49		0	0	856	26,813
CMRI		0	23,330	34,337		306
0	176		11,587	0	1,881	71,617
SEI		0	0	63,692		11,889
2,996	11,527		4,108	0	4,546	98,758
Other		889	9,088	36,621		15,330
4,333	95,831		10,926	0	60,885	233,903
TOTAL		39,697	438,640	530,645		65,082
24,717	144,161		63,306	0	82,440	1,388,688

VP Business Affairs
and Planning

Campus Services	0	0	12,945	335	
41,236	0	80,117	0	1,820	136,453
PP-Fac. and Adm.	0	0	9,174	1,066	
866	600	38,666	0	19,609	69,981
Other		4,601	0	15,276	1,084
591	58	889	0	0	22,509
TOTAL		4,601	0	37,395	2,485
42,693	658	119,682	0	21,429	228,943

VP Development	0	0	9,890	561	
0	138	820	0	0	11,409

VP Enrollment

Registrar Classrms.	61,052	0	0	0	0
0	0	0	0	0	61,052
Other		0	0	37,551	13,432
8,272	1,873	36,245	505,762	181,490	784,625
TOTAL		61,052	0	37,551	13,432
8,272	1,873	36,245	505,762	181,490	845,677

VP University Relations	0	0	5,736	313	
0	0	1,480	0	5,695	13,224

Total CMU		105,350	438,640	625,222	83,108
75,682	146,830	221,545	505,762	291,055	2,493,194

Non-CMU Occupant	0	0	0	0	0
0	0	0	0	47,767	47,767

Total Net

Assign. Space		105,350	438,640	625,222	83,108
75,682	146,830	221,545	505,762	338,821	2,540,960

Building Support	0	0	167	0	
0	65	0	0	885,550	855,782

TOTAL		105,350	438,640	625,222	83,108
75,682	146,895	221,545	505,762	1,224,372	3,426,743

Notes: Other Provost includes Administrative functions as well as University-controlled space

Other VP Enrollment space of 181,490 is leased space used for housing

Non-CMU Occupant includes Union Carbide at the Bushy Run facilities

**Total Space in Square Footage
By Major Division, College/Division, and Building**

As of June 30, 1994 See Appendix for building titles

		B/P	CFA	CYT	DH	EDSH	Bldg. FMR/MSL	GSIA
GYM	HBH	HH	HL	MMC				
Major Division								
President		109	0	0	0	0	0	0
0	1,837	0	0	0				
Provost								
CIT		42,855	0	2,119	54,146	0	0	0
0	17,403	74,760	0	0				
CFA		5,233	83,294	0	36,427	0	0	0
0	0	0	0	56,259				
HSS		75,095	0	0	0	0	0	0
0	1,032	0	0	7,937				
MCS		0	0	0	43,673	0	0	0
0	0	0	0	0				
SCS		0	0	9,837	11,359	14,678	19,221	0
0	0	0	0	0				
GSIA		0	0	0	0	0	0	65,129
0	0	0	0	0				
HNZ		0	0	0	0	0	0	0
0	24,973	0	0	0				
CMRI		0	0	0	0	0	0	0
0	0	0	0	0				
Other		7,628	1,344	25,876	0	148	32,784	290
0	12,837	0	77,834	0				
TOTAL		130,811	84,638	37,832	145,605	14,826	52,005	65,419
0	56,245	74,760	77,834	64,196				
VP Business Affairs and Planning								
Campus Srvs		5,274	30	382	10	0	2,242	50
20	30	20	10	79				
Other		3,822	1,828	4,438	1,148	41	131	575
463	859	413	302	4,545				
TOTAL		9,096	1,858	4,820	1,158	41	2,373	625
483	889	433	312	4,624				
VP Development								
0	0	0	0	0	0	0	0	0
VP Enrollment								
Classrms.		21,646	2,905	0	11,637	0	0	0
0	5,808	1,860	0	2,662				
Housing		0	0	0	0	0	0	0
0	0	0	0	0				
Athletics		0	0	0	0	0	0	0

55,108	0	0	0	0			
Other	621	0	498	0	0	0	0
0 4,941	510	0	1,524				
TOTAL	22,267	2,905	498	11,637	0	0	0
55,108	10,749	2,370	0	4,186			

VP Univ. Relations	0	0	0	0	0	0	0
0	0	0	0	0			

Total CMU	162,283	89,401	43,150	158,400	14,867	54,378	66,044
55,591	69,720	77,563	78,146	73,006			

Non-Cmu Occupant	0	0	0	0	0	0	0
0	0	0	0	0			

Total Net Assignable Space	162,283	89,401	43,150	158,400	14,867	54,378	66,044
55,591	69,720	77,563	78,146	73,006			

Building Support	70,409	35,742	19,416	58,248	2,659	21,286	40,742
7,254	32,228	37,318	23,379	29,685			

TOTAL	232,692	125,143	62,566	216,648	17,526	75,664	106,786
62,845	101,948	114,881	101,525	102,691			

**Total Space in Square Footage
By Major Division, College/Division, and Building
As of June 30, 1994 (continued from above)**

		Bldg.						
		MI	PPB	PRB	PUB	SH	WEH	WH
WHIT	OTHER	HSING	LEASED	TOTAL				
Major Division								
President		0	0	0	0	0	0	3,306
0	1,837	0	0	0				
Provost								
CIT		0	0	0	0	19,063	29,180	0
0	1,564	0	0	241,090				
CFA		0	0	0	0	0	195	0
0	3,637	0	1,524	186,569				
HSS		0	0	0	0	0	0	0
0	3,740	0	0	87,804				

CMU Space and Facilities Data

MCS	137,969	1,286	0	0	1,403	49,424	0
0	0	0	0	233,755			
SCS	0	0	0	6,140	0	0	82,017
0	0	0	0	143,252			
GSIA	0	0	0	0	0	0	0
0	0	0	0	65,129			
HNZ	0	0	0	0	0	0	0
0	0	0	1,840	26,813			
CMRI	35,432	0	0	0	0	0	0
0	0	0	36,185	71,617			
Other	21,873	0	0	0	0	19,003	4,667
68	26,658	0	101,652	332,661			
TOTAL	195,274	1,286	6,140	0	20,465	179,819	4,667
68	35,599	0	141,201	1,388,688			

VP Business Affairs and Planning

Campus Srvs	4,822	990	0	10	20	70	830
4,616	116,948	0	0	136,453			
Other	8,020	28,024	0	0	443	2,812	2,281
3,958	27,900	0	487	92,490			
TOTAL	12,842	29,014	0	10	463	2,882	3,111
8,574	144,848	0	487	228,943			

VP Development	0	0	0	0	0	0	5,388
0	6,021	0	0	11,409			

VP Enrollment

Classrms.	1,125	0	0	0	4,939	6,413	0
0	2,057	0	0	61,052			
Housing	0	0	0	0	0	0	0
0	0	542,055	110,986	653,041			
Athletics	0	0	0	0	0	0	0
0	16,180	0	0	71,288			
Other	160	584	904	0	0	0	16,805
0	33,749	0	0	60,296			
TOTAL	1,285	584	904	0	4,939	6,413	16,805
0	51,986	542,055	110,986	845,677			

VP Univ. Relations

Relations	313	0	0	9,254	0	0	0
0	3,657	0	0	13,224			

Total CMU	209,714	30,884	7,044	9,264	25,867	189,114	33,277
8,642	242,111	542,055	252,674	2,493,194			

Non-Cmu

Occupant	0	0	0	0	0	0	0
0	47,767	0	0	47,767			

Total Net

Assignable

Space	209,714	30,884	7,044	9,264	25,867	189,114	33,277
8,642	289,878	542,055	252,674	2,493,194			

Building

Support	141,503	13,173	268	1,054	10,806	104,430	12,546
3,390	19,893	161,408	38,946	885,782			

TOTAL	351,216	44,057	7,312	10,318	36,673	293,544	45,823
12,032	309,771	703,463	291,620	3,426,743			

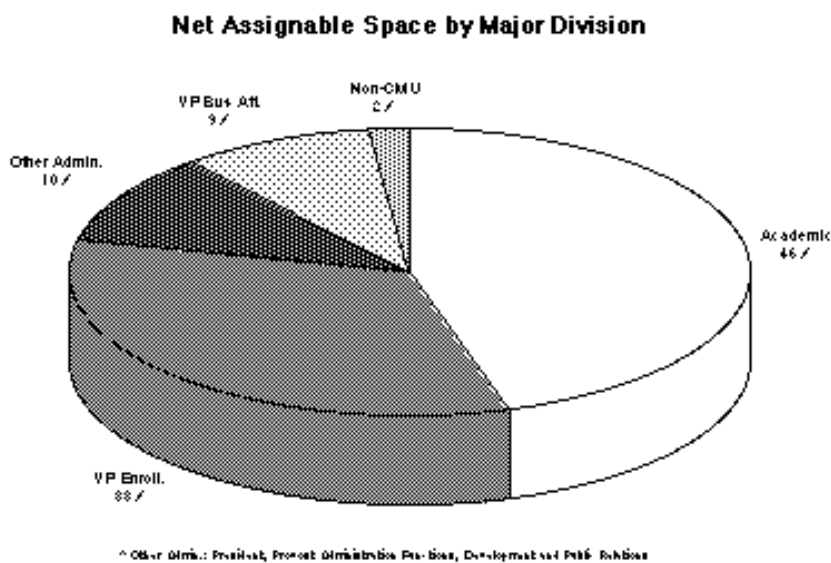
Note: Other building includes Bramer House, Studio Theatre, West Garages, Alumni House, Bushy Run Facilities, Owned Trailers, East Garage, Gesling Field, 6555 Penn Ave., 407 South Craig and the MM-C Plaza

Other Provost includes Administrative functions as well as University Controlled space.

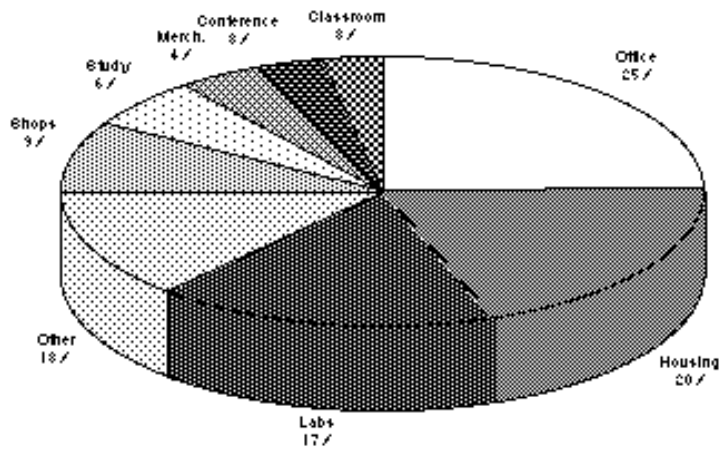
Major Leased space includes SEI.

Non-CMU Occupant includes Union Carbide.

**Net Assignable Space by Major Use and Division
As of June 30, 1994**



Net Assignable Space by Major Use



Parking Capacity Fiscal Years 1991 to 1995

	1991	1992	1993
1994	1995		
Spaces	Spaces	Spaces	Spaces
Permit Parking	2,001	2,203	2,214
2,242	2,114		
Visitor Parking	32	39	33
33	28		
Meter Parking	87	194	213
231	168		
Utility Parking	80	18	15
15	15		
Campus Street	301	301	301
301	301		
CMU Area Total	2,501	2,755	2,776
2,822	2,626		
Total Permits Issued	2,393	2,611	2,621
2,553	2,416		

Housing Capacity By Units, Beds Available and Filled Fall Semester 1994

	Rooms Available	Beds Available	Beds Filled
Boss	42	77	77
Cathedral Mansions	35	106	105
Doherty	60	159	159
Donner	136	254	254
Fairfax Apts.	36	72	72
Fraternities	233	466	340
Hammerschlag	78	168	168
Henderson	18	41	41
McGill	42	76	76
Mar. Morr. Apts.	20	80	79
Mar. Morr.S. I. Houses	3	24	
22			
Marybelle Apts.	18	36	36
Morewood Gardens Apts.	14	36	
36			
Morewood Gardens	357	706	705
Mudge	166	313	312
Resnik	91	151	149
Roselawn	12	60	60
Scobell	66	96	95
Sororities	32	64	64
Shirley Apts.	22	41	41
Spirit House	9	8	8
Tech House	8	8	6
Welch	30	54	54
West Wing	87	148	148
Woodlawn	9	31	31
Total	1,624	3,275	
3,138			

[\[Top of this page\]](#) [\[Fact Book Main Page\]](#) [\[Next Section: Appendix\]](#)

Last update: 7/12/95

CMU Fact Book Appendix

CONTENTS

[I. College and Department Listings](#)

[Carnegie Institute of Technology \(CIT\)](#)

[College of Fine Arts \(CFA\)](#)

[Humanities and Social Sciences \(HSS\)](#)

[Information Networking Institute \(INI\)](#)

[Mellon College of Science \(MCS\)](#)

[School of Computer Science \(SCS\)](#)

[Graduate School of Industrial Administration \(GSIA\)](#)

[The Heinz School \(HNZ\)](#)

[Carnegie Mellon Research Institute \(CMRI\)](#)

[Software Engineering Institute \(SEI\)](#)

[Administration \(ADMIN\)](#)

[III. Definition of Terms](#)

[Students](#)

[Teaching](#)

[Staff](#)

[Faculty](#)

[Alumni](#)

[Finances](#)

[Space and Facilities](#)

[CMU Facts Questionnaire](#)

I. COLLEGE AND DEPARTMENT LISTING

[College](#) [Department/Unit](#) [Abbreviation](#) [Notes](#)

CARNEGIE INSTITUTE OF TECHNOLOGY

CIT

Undergraduate and graduate college.

Biomedical Engineering (Biomedical E.)

Chemical Engineering (Chemical E.)

Civil Engineering (Civil E.)
Electrical and Computer Engineering (E & C E.)
Engineering and Public Policy (EPP)
Manufacturing Engineering (Mfg. E.)
Mechanical Engineering (Mechanical E.)
Materials Science and Engineering (MSE)
Engineering Design Research Center (EDRC) -- Research Center

ADDITIONAL UNITS:

Nuclear Engineering (Nuclear E.) -- This is no longer formally a department, but a few students are still finishing or graduating from the program.

No Major Department (No Major Dept.) -- Students do not declare majors until their sophomore year.

Interdisciplinary (Interdiscp.) -- Interdisciplinary units are jointly taught among departments.

Dean's Office (Dean's Ofc.) -- Some faculty with administrative responsibility are located in the the Dean's office.

University Choice Program (Univ. Choice)

COLLEGE OF FINE ARTS

CFA

Undergraduate and graduate college.

Architecture
Art
Design
Drama
Music
Studio for Creative Inquiry (SFCI) -- Research Center

ADDITIONAL UNITS:

Interdisciplinary (Interdiscp.) -- Interdisciplinary units are jointly taught among departments.

Dean's Office (Dean's Ofc.) -- Some faculty with administrative responsibility are located in the Dean's office.

Pre-College Art (Pre-Col. Art) -- Year-round program for pre-college art students and CMU

students who are not art majors.

Pre-College Music (Pre-Col. Mus.) -- Year-round program for pre-college music students and CMU students who are not music majors.

Humanities and Arts (BHA MAM) -- Students may now participate in a degree program combining humanities and arts curriculum

COLLEGE OF HUMANITIES AND SOCIAL SCIENCES

H&SS

Undergraduate and graduate college.

English

History

Modern Languages

Philosophy

Psychology

Social and Decision Sciences (S&DS.)

Statistics

ADDITIONAL UNITS:

Economics -- The student major Economics is housed in H&SS.

Industrial Management in H&SS (IM - H&SS) -- Some freshmen and sophomores take the H&SS core before being accepted into the IM major.

Student Defined Major (Student Def'd) -- Some students in H&SS define individualized interdisciplinary majors.

No Major Department (No Major Dept.) -- Students do not declare majors until their junior year.

Dean's Office (Dean's Ofc.) -- Some faculty with administrative responsibility are located in the the Dean's office.

University Choice Program (Univ. Choice).

INFORMATION NETWORKING INSTITUTE

INI

Joint academic program between CIT, GSIA, and SCS.

MELLON COLLEGE OF SCIENCE

MCS

Undergraduate and graduate college.

Biological Sciences (Biology)

Chemistry (Chem)

Mathematics (Math)

Physics (Phy)

ADDITIONAL UNITS:

No Major Department (No Major Dept.) -- Students do not declare majors until their sophomore year.

Dean's Office (Dean's Ofc.) -- Some faculty with administrative responsibility are located in the Dean's office.

Interdisciplinary (Interdiscp.) -- Interdisciplinary units are jointly taught among departments.

University Choice Program (Univ. Choice)

SCHOOL OF COMPUTER SCIENCE

SCS

Undergraduate and graduate college.

Computer Science (Comp. Sci.)

Robotics (Rob)

Center for Machine Translation (CMT) -- Research Center

Information Technology Center (ITC) -- Research Center

Software Engineering (SE)

GRADUATE SCHOOL OF INDUSTRIAL ADMINISTRATION

GSIA

Undergraduate and Graduate College.

ADDITIONAL UNITS:

Economics -- Most Economics courses are taught by GSIA faculty.

Industrial Management (IM) -- Most IM courses are taught by GSIA faculty.

**THE HEINZ SCHOOL
HNZ Graduate College.**

**CARNEGIE MELLON RESEARCH INSTITUTE
CMRI
Research Center.**

**SOFTWARE ENGINEERING INSTITUTE
SEI
Research Center.**

**ADMINISTRATION
ADMIN**

NOTE: The category of NON-DEGREE students is often listed as a Department in tables showing student enrollment.

These non-degree seeking students are not affiliated with any Department or College (see Students section).

II. TIME PERIODS

Fall Semester - Data are as of the 15th day in the Fall Semester (except Units Taught, which are end of semester counts).

Academic Year - Data are the addition of Fall and Spring Semester totals.

Fiscal Year - Data are for the period July 1 to June 30 of the indicated year.

III. DEFINITION OF TERMS

STUDENTS

FRESHMEN

Applied - Individuals who completed the Admissions process.

Admitted - Applicants who were admitted to Carnegie Mellon.

Enrolled - Applicants who were admitted and actually enrolled.

Yield - Enrolled as a percent of Admitted freshmen.

Competing Schools - The top 15 schools to which students admitted to Carnegie Mellon also submitted applications. The source of this data is the Admissions Office Admitted Student Questionnaire.

ENROLLMENT

Students by Level:

Undergraduate - Freshman, Sophomore, Junior, Senior

Graduate - Students enrolled in Master's or Doctoral programs.

Non-Degree - Special students who are not enrolled in a degree program.

Headcount - Each student, full or part time, is counted once.

Full-Time Equivalent (FTE) - Each full-time student is counted once; part-time students are counted based on the percentage of full-time tuition paid to cover their current courses.

HOUSING TYPE

University Housing:

On-Campus - CMU owned dormitories physically located on the campus.

Off-Campus - CMU controlled off-campus housing.

Fraternity/Sorority - Fraternity or Sorority controlled housing.

Non-University Housing - All other student residence arrangements.

PERSISTENCE

The percentage of students from an entering cohort who are enrolled in a particular year plus those who have graduated.

DEGREES

Bachelors - B.A., B.S., BFA, B.H.A, B.Arch.

Masters - M.A., M.S., M.E., MFA, M.A.M., M.P.M, M.S.I.A.

Doctorates - D.A., Ph.D.

All degrees are shown by the Department from which they were earned, rather than the particular program or emphasis listed on the individual's degree. All degree programs are listed in the front of this booklet.

RACE

NRA - Non Resident Aliens

AI/AN - American Indian/Alaskan Native

A/PI - Asian/Pacific Islander

Hisp. - Hispanic

Unkn. - Unknown

TEACHING

UNITS

A student at CMU earns a specified number of units for each course taken at the University. Three (3) units are the equivalent of one (1) credit hour. The total units taught by a department is calculated by summing the units taken by each student for each course taught by the department.

Other - Includes units taught to Non-Degree students and students from other colleges attending CMU through the Pennsylvania Council of Higher Education (PCHE) agreement.

STAFF

Full-time employees includes those on leave and visiting research professionals. Visiting faculty are excluded.

FACULTY

Total Faculty includes three categories of faculty members. They are:

Regular Faculty - Regular faculty are comprised of four ranks of permanent faculty members (subject to the rules of the tenure process): Professor, Associate Professor, Assistant Professor, and Instructor. Professors and some Associate Professors are tenured; the rest of the Associate Professors and Assistant Professors are eligible for tenure, or in the Tenure Stream; and Instructors are eligible for promotion into the tenure stream. Instructors are part of the regular faculty for whom the tenure probationary period has not yet begun.

Research Faculty - Research faculty are comprised of several ranks of faculty-equivalent research positions of scientists and engineers.

Special Faculty - Special faculty are comprised of several ranks of part-time or temporary, instructional, and research faculty including active Faculty Emeriti, Adjunct Faculty, Instructional Staff, Lecturers, Visiting Faculty, Special Research Faculty, and Post-Doctoral Associates. Administrators with Special Faculty appointments are excluded.

Method of counting - Regular and Research faculty may have contractual joint appointments in one or more departments, and are split between these appointments accordingly. Special Faculty are counted in the department in which they have their primary appointment.

Terminal degree - Terminal degrees are typically recognized in a field as the highest level of education attainable. Professional fields often have terminal degrees that are not PhD's, e.g. MFA for studio/performance, DA (doctorate of Arts) and DrI (Dr. of engineering from Italy).

ALUMNI

Includes all living persons who attended the university as degree candidates.

FINANCES

TUITION AND FEES

Undergraduate Tuition - Tuition charged to full-time undergraduate students. This is established at the university level.

Graduate Tuition - Tuition charged to full-time graduate students. This is established by each college.

Average Room - The annual charge for a standard double room. Other options for university housing include: Standard and Prime rooms for one, three or four students, and several apartment, townhouse or separate house alternatives.

Average Board - Constant Pass Plus. The annual charge for unlimited access to Highlander Cafe + 50 block meals per semester.

Total Estimated Cost of Attending CMU - This includes tuition and activities fee, books and supplies, incidentals, room and board for residents and lunches and transportation for Commuters. This is computed each year by the Financial Aid Office.

UNDERGRADUATE FINANCIAL AID RESOURCES

Federal Aid:

PELL - Federal entitlement grant program.

SEOG - Supplemental Education Opportunity Grant.

State Aid:

PHEAA - Pennsylvania Higher Education Assistance Agency.

Other State Aid: Aid from states other than Pennsylvania.

CMU E&GO - Aid provided from Carnegie Mellon Educational and General Operating Expenses.

CMU Endowed Aid - provided from income from the Carnegie Mellon University Endowment Fund.

CMU Gifts & Grants - Aid provided through gifts and grants to the University for this purpose.

ROTC - Money from the Air Force, Army and Navy ROTC programs.

Other Grant Resources - Aid from all other sources, primarily scholarships.

GENERAL FUNDS INCOME, EXPENDITURES, AND TRANSFERS

GENERAL FUNDS - These funds are divided into *Unrestricted Funds* that can be used for any University purpose, *Designated Funds* that have been set aside for particular purposes such as the Summer School program, and *Restricted Funds* which have been given for a specific purpose, such as research projects by the donor or granting agency. The General Funds support teaching, research, support programs, student services, student aid, administrative and business operations, physical plant operations and maintenance and public service.

INCOME

Tuition & Fees - Payments made by undergraduate, graduate and special students in accordance with University tuition and fee schedules.

Endowment Income - Income derived from endowment investments.

Current Fund Investments - Earnings derived from Current Fund balances.

Gifts and Grants - Restricted and unrestricted gifts given to the university.

Sponsored Research - Restricted income given for a specific research project by the donor or granting agency.

Auxiliary Services - Income from Auxiliary Services (i.e., housing, food services, parking.)

Misc. Income - Includes interest on operating funds and reserve holdings, interest on university internal loans and miscellaneous charges.

EXPENDITURES

Instruction & Dept. Research - Expenditures supporting the academic programs and operations in the colleges.

Carnegie Mellon Research Institute - Expenditures from Carnegie Mellon Research Institute.

Academic Support - Includes: Audio Visual Aids and Computing and Info Services.

Sponsored Research - Expenditures from restricted funds for research.

Student Aid - Restricted and unrestricted aid supporting undergraduates.

Libraries - Expenditures from the libraries.

Campus Operations - Operation and maintenance of physical plant.

Utilities - Expenditures for utilities and steam.

Administration - Expenses supporting administrative units.

Student Services - Includes Enrollment Planning, Athletics and Student Affairs.

General Institutional - Includes insurance, legal and investment agent fees.

Auxiliary Services - Expenditures for the operation of Auxiliary Services units.

Total Transfers - Includes transfers to capital, debt service, and college reserves.

RESEARCH COSTS

In the listing by College and Research Center

Other includes: Academic Computing, Computing Systems, Hunt Institute for Botanical Documentation, Center for the Design of Educational Computing, Office of the Provost, Office of the Vice President for Enrollment and General Institutional.

VOLUNTARY SUPPORT

Voluntary Support - Contributions supporting the University, excluding: income from endowment and other invested funds, and support from federal, state and local governments and their agencies.

TUITION BENEFITS

Money paid to CMU faculty, staff and their dependents to take courses at CMU or other universities.

SPACE AND FACILITIES

USE CATEGORIES

Classroom - Includes all rooms used for classrooms.

Laboratory/Studio - Includes laboratory and studio facilities, used both as classrooms and for research.

Office - Includes offices, office support areas and office-related conference rooms.

Other - Includes Special Use Facilities (e.g. the gym), General Use Facilities (e.g., lounge or dining facilities), Support Facilities (e.g. computer, shop and storage rooms) and Health Care Facilities.

Building Support - Includes circulation, mechanical and structural areas.

Univ. Controlled - Represents primarily public spaces which are not under the control of any individual department, as well as unassigned space held in reserve by the university to allow for future departmental expansion, or for temporary allocation during renovations.

BUILDING ABBREVIATIONS

B/P - Baker/Porter

CFA - College of Fine Arts

CYH - Cyert Hall

DH - Doherty Hall

EDSH - Elliott Dunlap Smith Hall

FMR/MSL - Field & Mobile Robotics Building / Mine Safety Laboratory Building

GSIA - Graduate School of Industrial Administration

G - Gym

HBH - Hamburg Hall
HH - Hammerschlag Hall
HL - Hunt Library
MMC - Margaret Morrison Carnegie Hall
MI - Mellon Institute
PPB - Physical Plant Building
PRB - Planetary Robotics Building
SCRG - 407 South Craig
SH - Scaife Hall
SKIBO - Skibo
WEH - Wean Hall
WH - Warner Hall
WHIT - Whitfield Hall

CARNEGIE MELLON FACTS 1995

Questionnaire

1. What additional information would you like to see in Carnegie Mellon Facts next year?
2. What information or tables should be excluded?
3. Do you find the information readable? Would you like to see more graphs or other visual aids? Please elaborate.
4. Did you find any of the titles, information, symbols or tables to be confusing? Please explain.
5. Please add any other relevant comments here.

(Optional)

Name:

Department:

[\[Top of this page\]](#) [\[Fact Book Main Page\]](#)

Last update: 7/12/95