

Forbes Beeler Special Selection Process

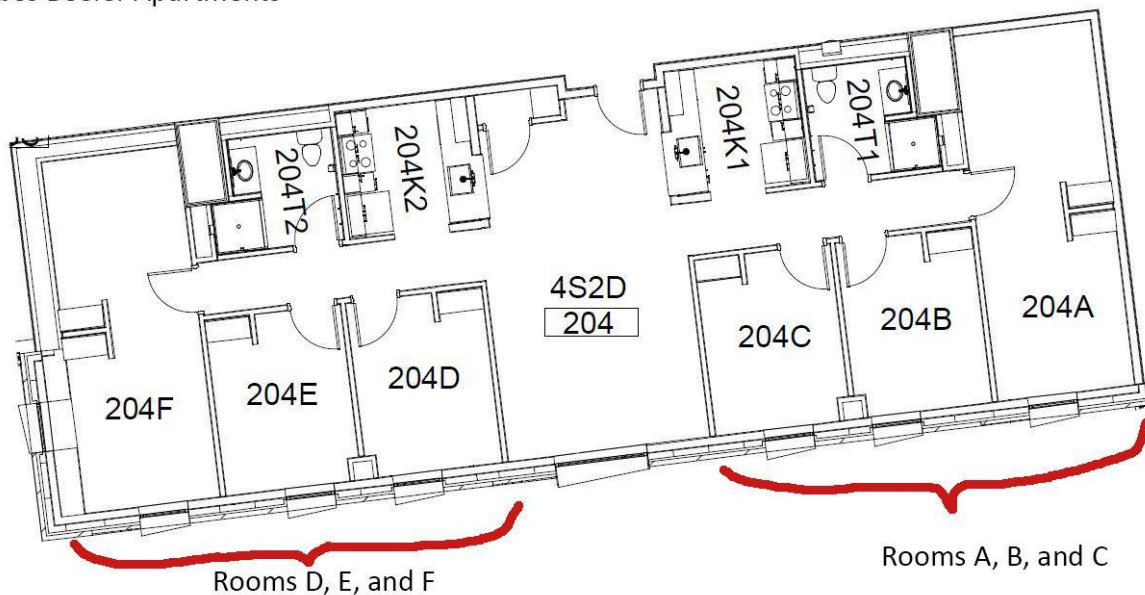
The Forbes Beeler Special Selection Process will only be for **roommate groups of 4** (selecting one half of an 8-occupant unit), and the deadlines and selection day will be different than for General Room Selection applicants. The application requirements, process, eligibility details, and FAQ's are [all included on the Forbes Beeler Special Selection Process website](#).

Forbes Beeler Sample Unit:

- When reviewing floor plans to determine which rooms make up "one side" of a unit, look for the large living/dining room area that separates the two sides.
- In the example below, rooms A, B, and C are one side for a group of 4, and rooms D, E, and F are another side for another group of 4

Apt. 204

Forbes Beeler Apartments



Things to note:

- One side of a unit consists of one double bedroom and two single bedrooms. Groups should plan in advance who will be assigned to the singles and who will be assigned to the double room.
- Side 1 of the unit will have rooms labeled A, B, and C. Side 2 of the unit will have rooms labeled D, E, and F.

Breakdown by Floor and Apartment

2nd Floor

- 202** Side 1 (**A**: Apt Double, **B & C**: Apt Singles)
Side 2 (**D & E**: Apt Singles, **F**: Apt Double)
- 203** Side 1 (**A, B, C & D**: Apt Singles)
Side 2 (**E & F**: Apt Singles, **G**: Apt Double)
- 204** Side 1 (**A**: Apt Double, **B & C**: Apt Singles)
Side 2 (**D & E**: Apt Singles, **F**: Apt Double)
- 212** Side 1 (**A**: Apt Double, **B & C**: Apt Singles)
Side 2 (**D & E**: Apt Singles, **F**: Apt Double)
- 213** Side 1 (**A**: Apt Double, **B & C**: Apt Singles)
Side 2 (**D & E**: Apt Singles, **F**: Apt Double)
- 214** Side 2 (**E & F**: Apt Singles, **G**: Apt Double) – Female Unit
Note: Side 1 is occupied by a Female RA and their roommates
- 215** Side 1 (**A**: Apt Double, **B & C**: Apt Singles)
Side 2 (**D & F**: Apt Singles, **E**: Apt Double)

3rd Floor

- 302** Side 1 (**A**: Apt Double, **B & C**: Apt Singles)
Side 2 (**D & E**: Apt Singles, **F**: Apt Double)
- 303** Side 1 (**A, B, C & D**: Apt Singles)
Side 2 (**E & F**: Apt Singles, **G**: Apt Double)
- 304** Side 1 (**A**: Apt Double, **B & C**: Apt Singles)
Side 2 (**D & E**: Apt Singles, **F**: Apt Double)
- 305** Side 2 (**E & F**: Apt Singles, **G**: Apt Double) – Male Unit
Note: Side 1 is occupied by a Male RA and their roommates
- 306** Side 1 (**A**: Apt Double, **B & C**: Apt Singles)
Side 2 (**D & E**: Apt Singles, **F**: Apt Double)

- 307** Side 1 (**A:** Apt Double, **B & C:** Apt Singles)
Side 2 (**D & E:** Apt Singles, **F:** Apt Double)
- 310** Side 1 (**A:** Apt Double, **B & C:** Apt Singles)
Side 2 (**D & E:** Apt Singles, **F:** Apt Double)
- 311** Side 1 (**A:** Apt Double, **B & C:** Apt Singles)
Side 2 (**D & E:** Apt Singles, **F:** Apt Double)
- 312** Side 1 (**A:** Apt Double, **B & C:** Apt Singles)
Side 2 (**D & E:** Apt Singles, **F:** Apt Double)
- 313** Side 1 (**A:** Apt Double, **B & C:** Apt Singles)
Side 2 (**D & E:** Apt Singles, **F:** Apt Double)
- 314** Side 2 (**E & F:** Apt Singles, **G:** Apt Double) – Male Unit
Note: Side 1 is occupied by a Male RA and their roommates
- 315** Side 1 (**A:** Apt Double, **B & C:** Apt Singles)
Side 2 (**D & F:** Apt Singles, **E:** Apt Double)

4th Floor

- 402** Side 1 (**A:** Apt Double, **B & C:** Apt Singles)
Side 2 (**D & E:** Apt Singles, **F:** Apt Double)
- 403** Side 1 (**A, B, C & D:** Apt Singles)
Side 2 (**E & F:** Apt Singles, **G:** Apt Double)
- 404** Side 1 (**A:** Apt Double, **B & C:** Apt Singles)
Side 2 (**D & E:** Apt Singles, **F:** Apt Double)
- 405** Side 2 (**E & F:** Apt Singles, **G:** Apt Double) – Male Unit
Note: Side 1 is occupied by a Male RA and their roommates
- 406** Side 1 (**A:** Apt Double, **B & C:** Apt Singles)
Side 2 (**D & E:** Apt Singles, **F:** Apt Double)
- 407** Side 1 (**A:** Apt Double, **B & C:** Apt Singles)
Side 2 (**D & E:** Apt Singles, **F:** Apt Double)
- 408** Side 1 (**A:** Apt Double, **B & C:** Apt Singles)
Note: Standalone 4-person Unit

- 410** Side 1 (**A**: Apt Double, **B & C**: Apt Singles)
Side 2 (**D & E**: Apt Singles, **F**: Apt Double)
- 411** Side 1 (**A**: Apt Double, **B & C**: Apt Singles)
Side 2 (**D & E**: Apt Singles, **F**: Apt Double)
- 412** Side 1 (**A**: Apt Double, **B & C**: Apt Singles)
Side 2 (**D & E**: Apt Singles, **F**: Apt Double)
- 413** Side 1 (**A**: Apt Double, **B & C**: Apt Singles)
Side 2 (**D & E**: Apt Singles, **F**: Apt Double)
- 414** Side 2 (**E & F**: Apt Singles, **G**: Apt Double) – Female Unit
Note: Side 1 is occupied by a Female RA and their roommates
- 415** Side 1 (**A**: Apt Double, **B & C**: Apt Singles)
Side 2 (**D & F**: Apt Singles, **E**: Apt Double)