

Cumulative carbon emissions

*from fossil-fuels and cement production, in million metric tons of carbon (not CO₂)

Data from Oak Ridge National Laboratory, ORNL
 Cumulatives since: Afghanistan (1949), Bolivia (1928), Brazil (1901), China (1899), Colombia (1901), Egypt (1911), France (1802), Germany (1972), India (1858), Indonesia (1889), Japan (1950), Mali (1959), Mexico (1891), Philippines (1907), Russia (1830), Senegal (1958), South Africa (1884), UK (1751), U.S. (1800).

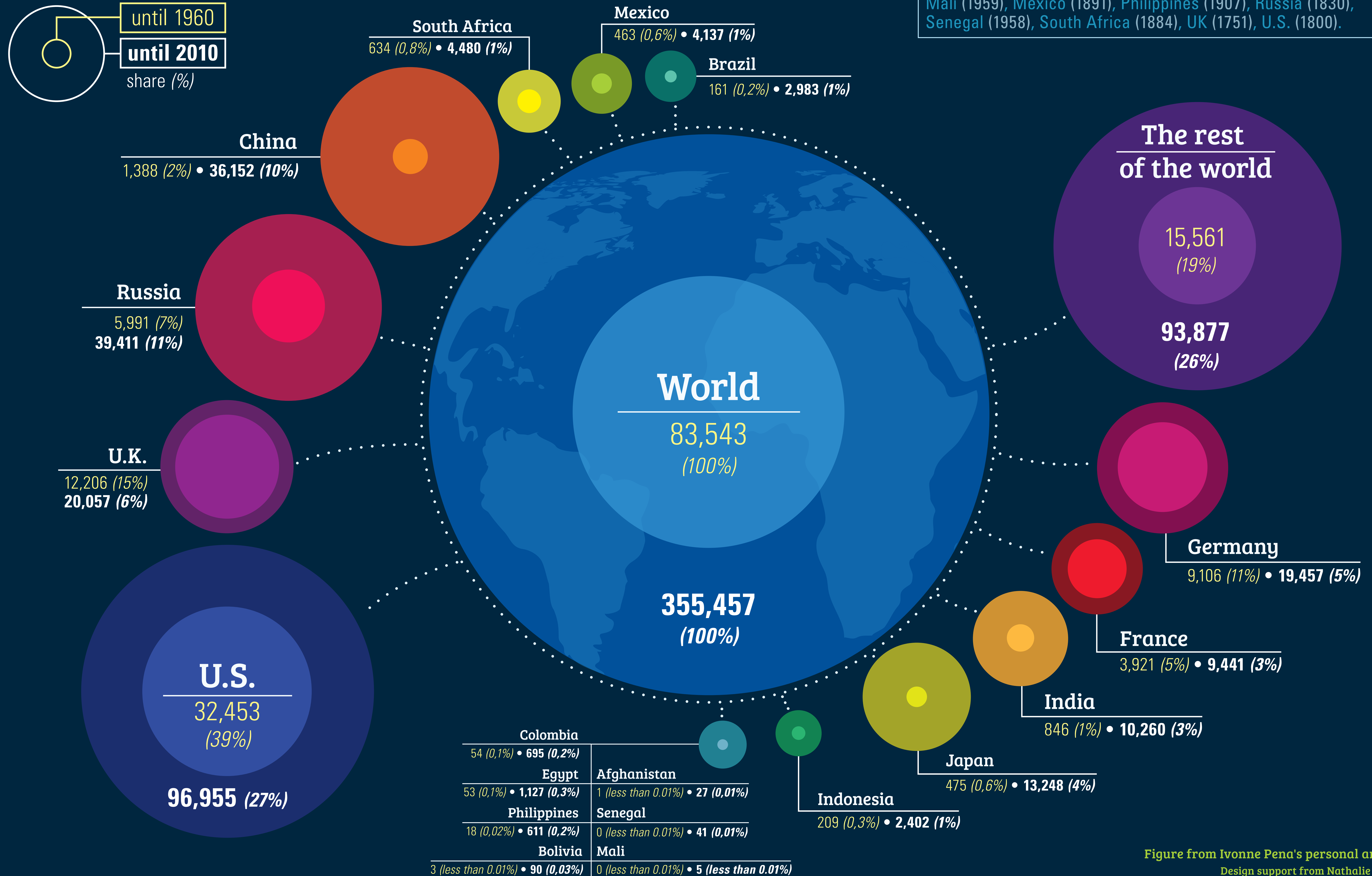


Figure from Ivonne Pena's personal archive.
 Design support from Nathalie Ospina.