

# Carnegie Mellon University

## Materials Science & Engineering

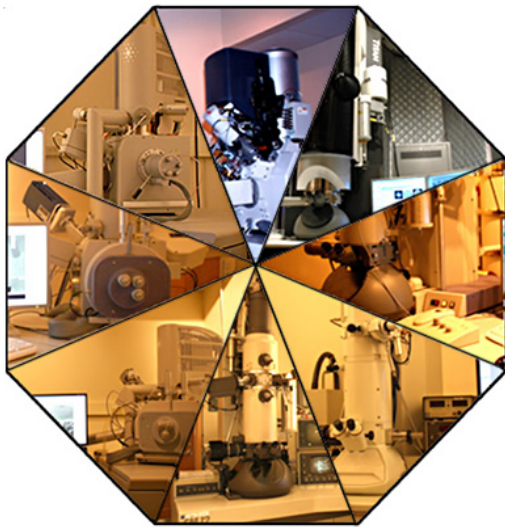
*presents*

### **The Spectacular World of MSE Equipment & Instrumentation**

Jason Wolf

Department of Materials Science & Engineering  
Carnegie Mellon University

An inquiry such as “Does MSE have a turbo entabulator?” is often met with additional questions: “What is your sample? What do you want to measure?” This presentation will be a summary of our department's technical capabilities along with logistical information



such as training requirements. To enhance a dry list of devices, the talk will revolve around a theme of spectra. Before inquiring about devices with vague acronyms, a user should first identify the type of spectrum being explored and the range of interest within that spectrum. Thinking in those terms quickly leads to appropriate technique. More importantly, it keeps the limitations of a measurement in mind while interpreting a measurement.

Jason Wolf is the Supervisor of the X-ray Laboratory, as well as the resident go to guy in the Department of Materials Science and Engineering. He earned his B.S in Physics at the Wheeling Jesuit University in 1987. As a staff member, he began taking classes towards an M.S. degree. He was awarded the CIT Burritt Education Staff Award and graduated with his Masters in Materials Science and Engineering in 2004. The Jason Wolf Fan Club was started in 2014 with approximately 40 dedicated members. Jason enjoys golfing, Ruzzle and snoozing on the couch with his dog, Minnie. He is hoping to “bring Buctober back to CMU this fall” and has been known to throw a pretty awesome Pittsburgh Pirate rally deck party.

**Doherty Hall 2210, 11:30AM**  
**Friday, September 26, 2014**