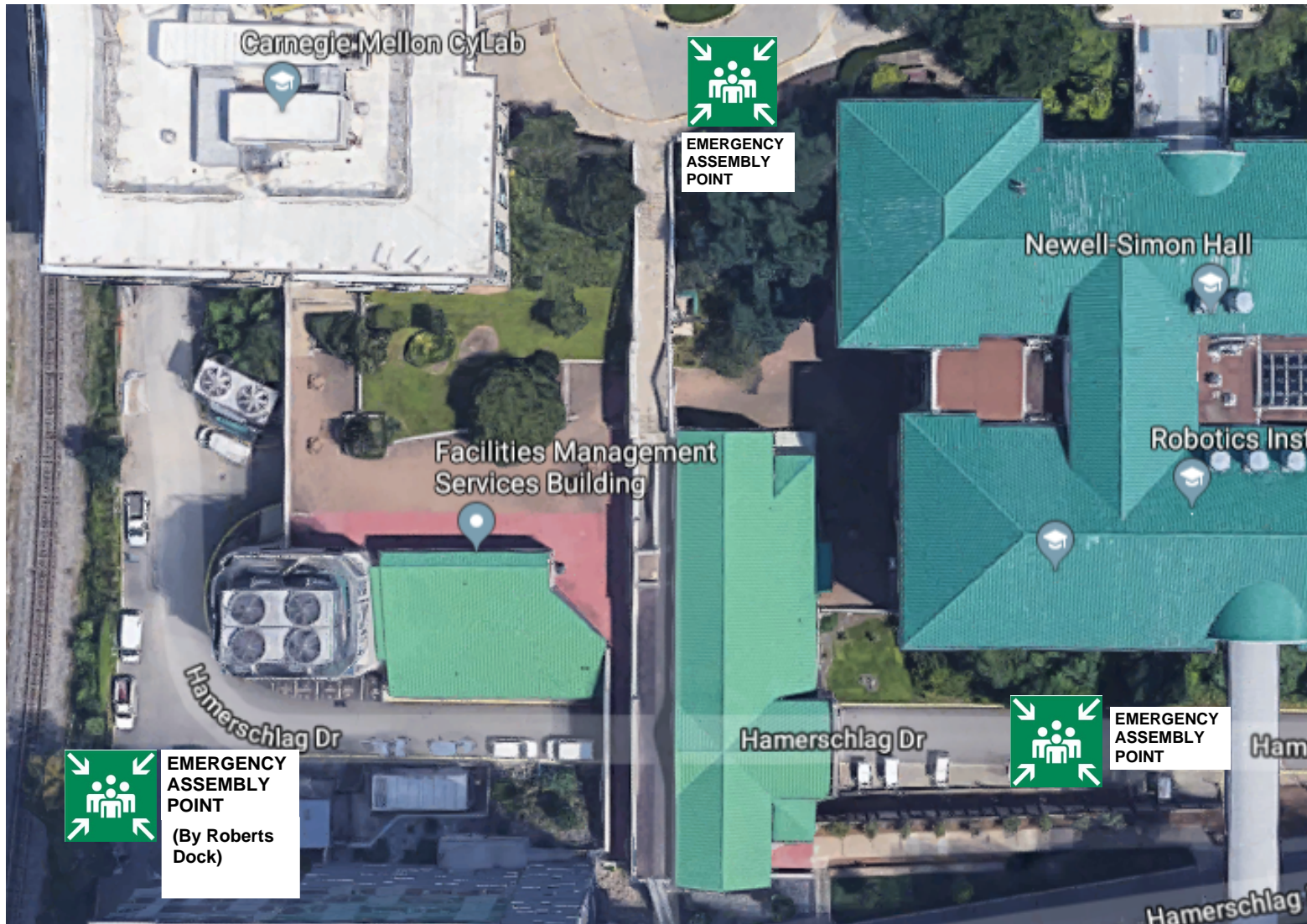
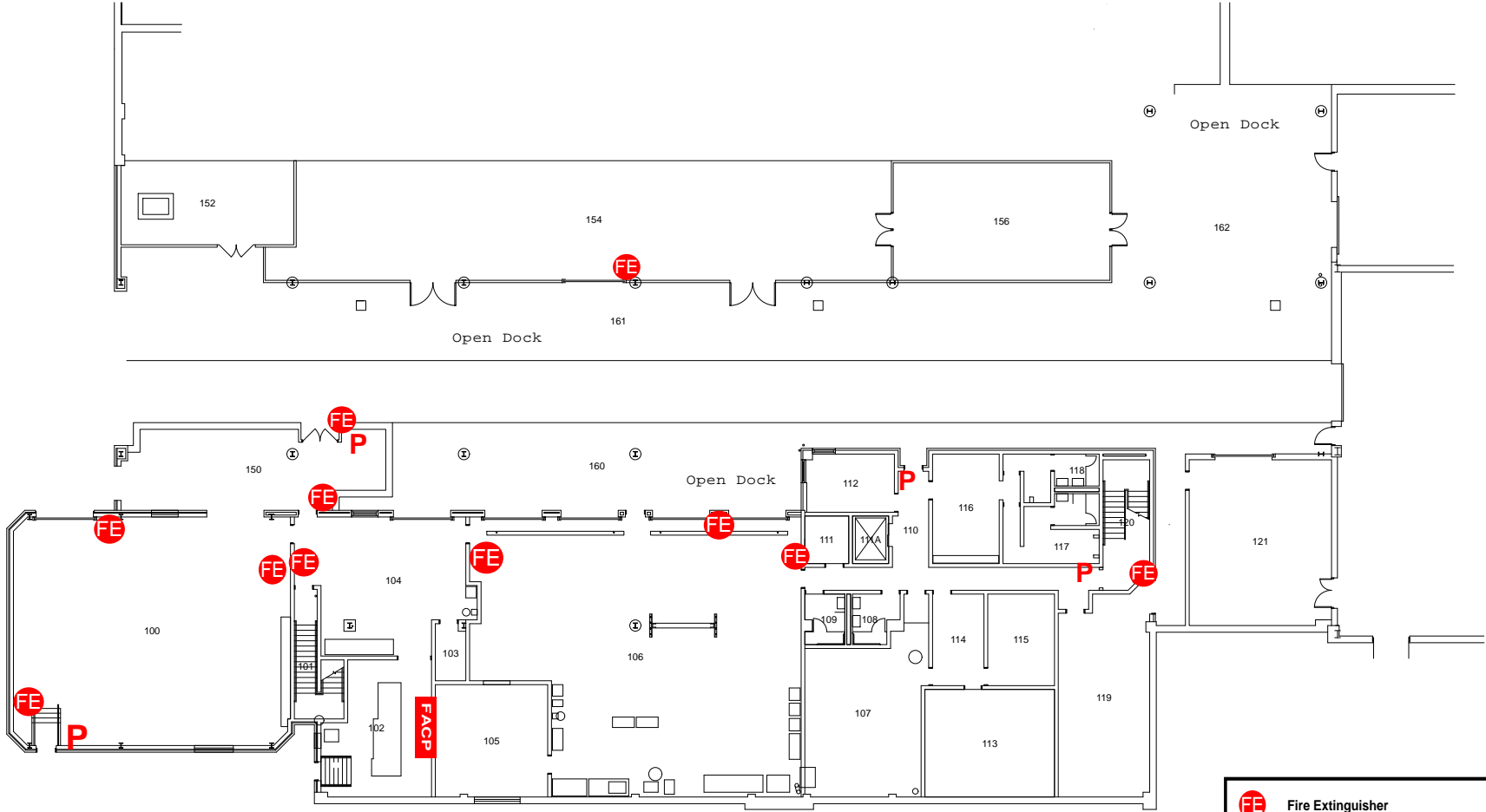


Emergency Assembly Points Facilities Management Services (FMS) Building



NOTE: Lower Hamerschlag Drive will be primary access for Fire Department vehicles

Facilities Management Services
(FMS) Building
Floor 1



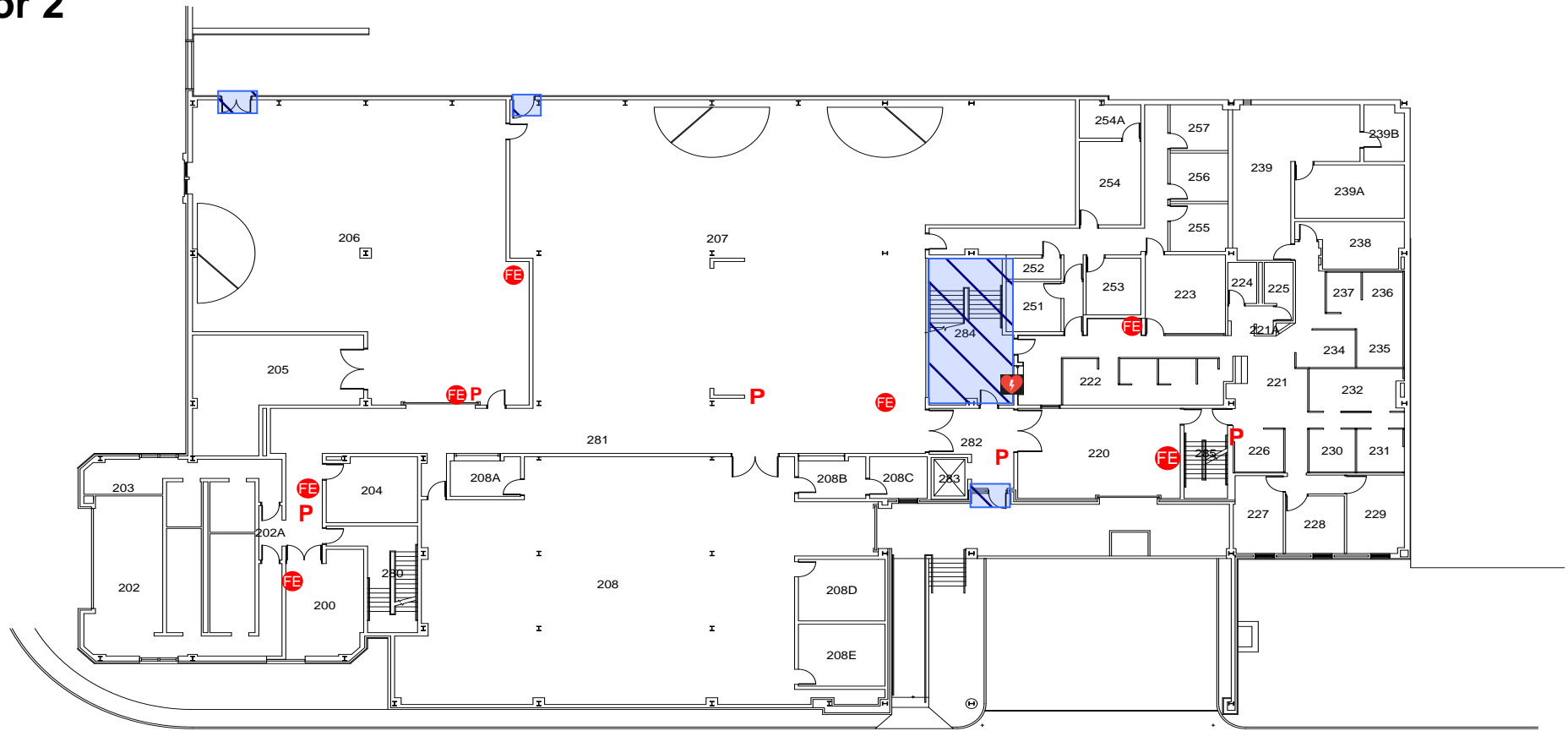
IN AN EMERGENCY USE THE CLOSEST SAFE EXIT



Carnegie
Mellon
University

	Fire Extinguisher
	Fire Alarm Pull Station
	AED
	Area of Refuge
	Primary Exit - Use Nearest Safe Route Secondary Exit - Use Alternate Safe Route
	Assembly Point
	Hose Station
	Fire Alarm Control Panel
	Fire Annunciator
	METIS Device












Facilities Management Services (FMS) Building Floor 2



IN AN EMERGENCY USE THE CLOSEST SAFE EXIT



**Carnegie
Mellon
University**

	Fire Extinguisher
	Fire Alarm Pull Station
	AED
	Area of Refuge
	Primary Exit - Use Nearest Safe Route
	Secondary Exit - Use Alternate Safe Route
	Assembly Point
	Hose Station
	Fire Alarm Control Panel
	Fire Annunciator
	METIS Device

Facilities Management Services (FMS) Building Floor 3



IN AN EMERGENCY USE THE CLOSEST SAFE EXIT



**Carnegie
Mellon
University**

	Fire Extinguisher
	Fire Alarm Pull Station
	AED
	Area of Refuge
	Primary Exit - Use Nearest Safe Route
	Secondary Exit - Use Alternate Safe Route
	Assembly Point
	Hose Station
	Fire Alarm Control Panel
	Fire Annunciator
	METIS Device