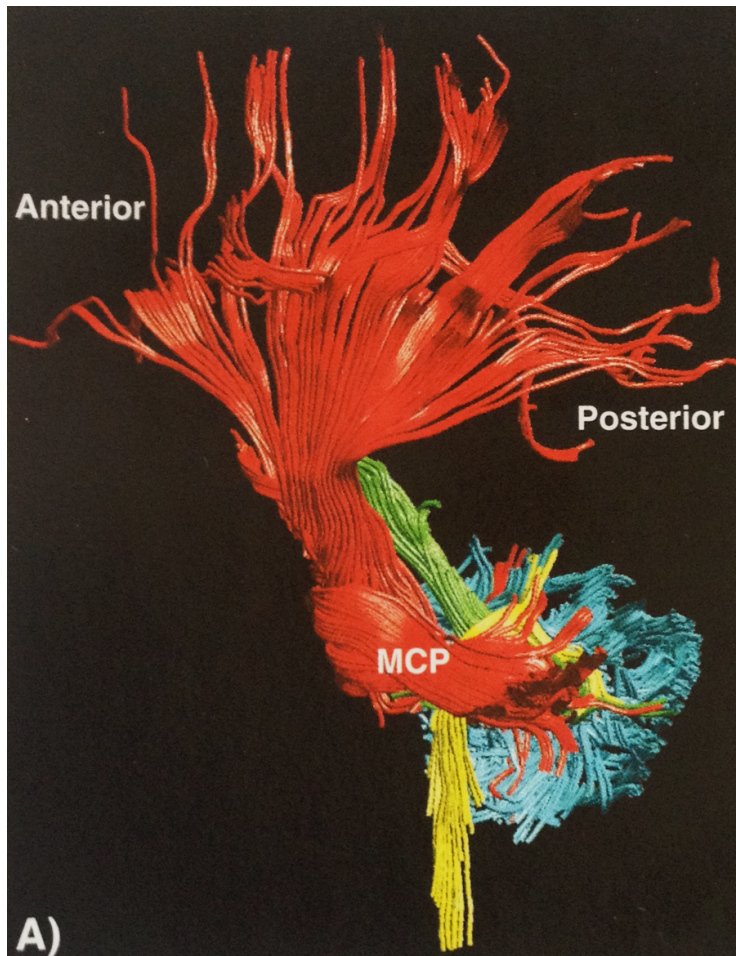


# Cerebellar Peduncles Tractography

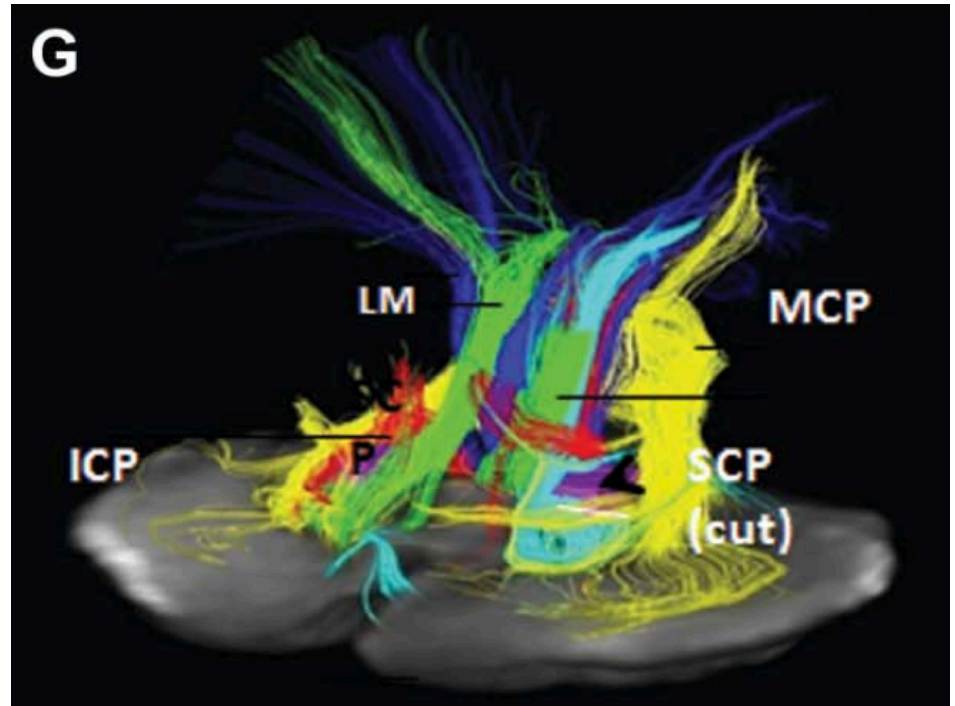
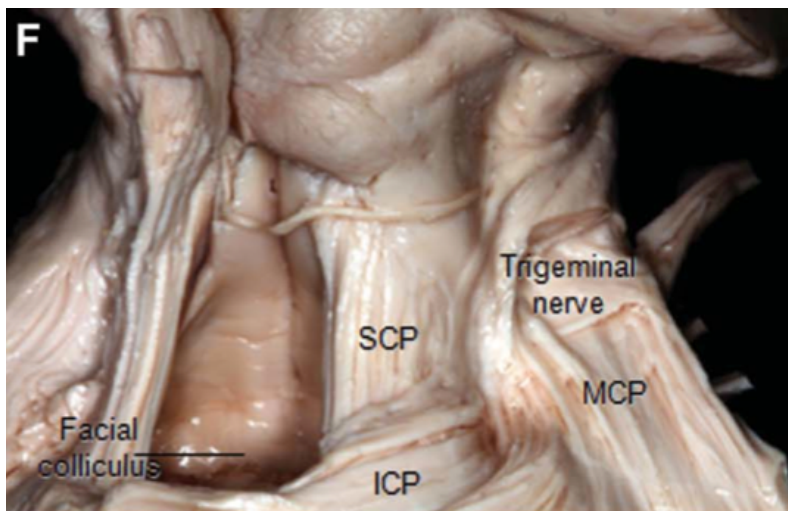
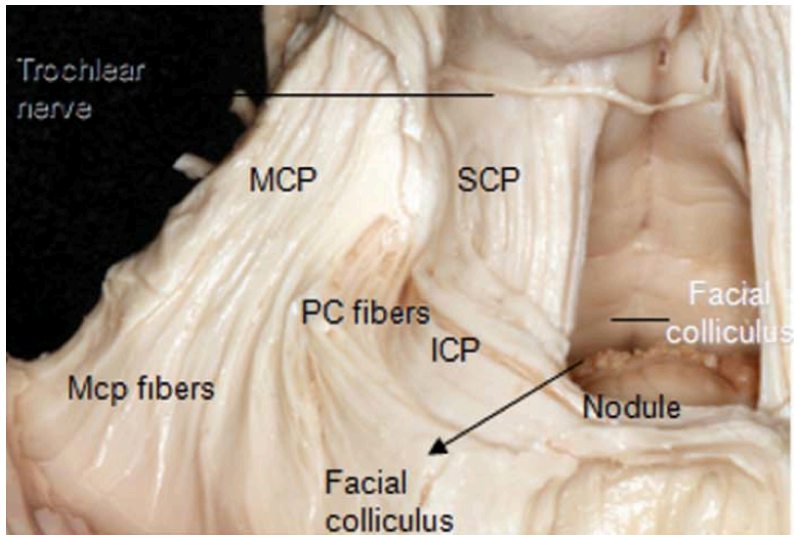
Virtual Neuroanatomy

Lecture Date: 10/16/2014

# Cerebellar Connections



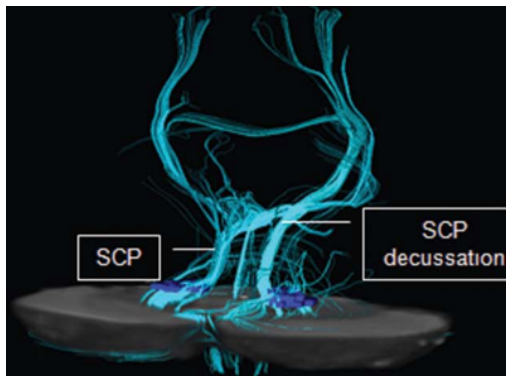
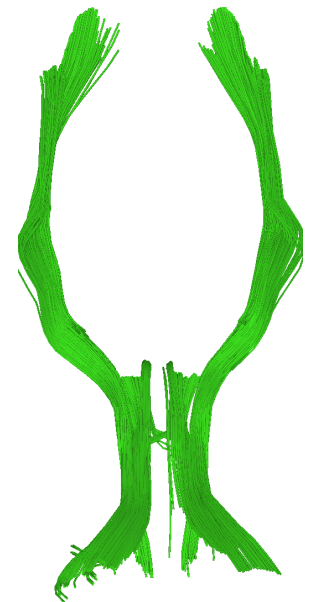
# Linking Micro-dissection with Fiber Tracking



MCP – Most Lateral, parallel to midline & DN  
 SCP – Most medial (roughly 5mm from midline)  
 ICP – Dorsal to roof of 4<sup>th</sup> Ventrical

# Superior Cerebellar Peduncle

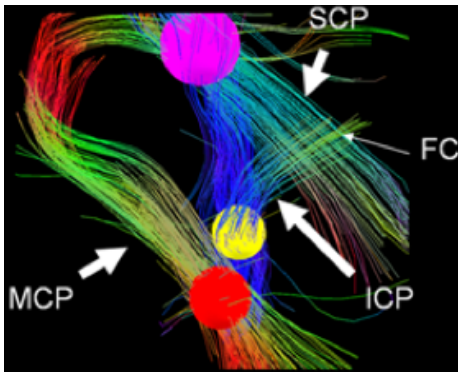
- Dento-rubro-thalamic
  - Dentate-dorsal\_pons-ventral\_lateral\_thalamus
- Globose-emboliform-rubral
  - Interposed\_X(midline)\_rednucleus
- Tal Atlas?
  - Ventral\_posterior\_lateral
  - Upper\_Pons



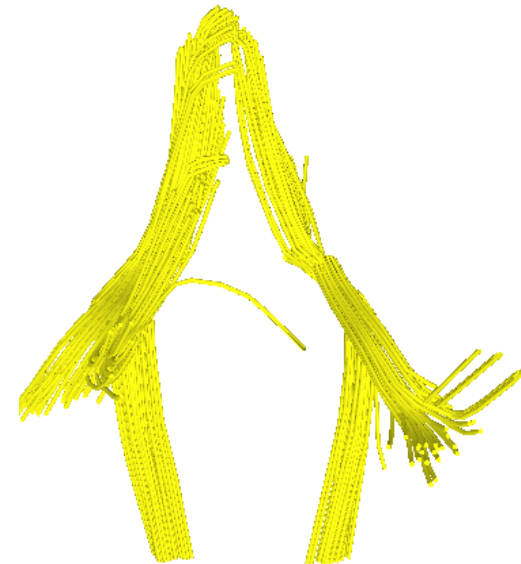
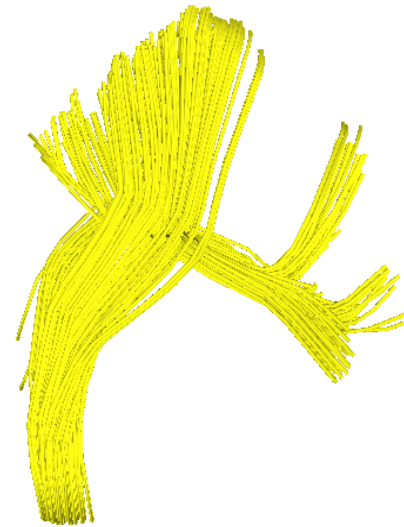
Tractographic  
Reconstruction

# Inferior Cerebellar Peduncle

- Spino-cerebellum
  - Posterior Spine-medulla-cerebellar cortex
- Tal Atlas?
  - Fastigium
  - Vermal Lobules
  - Medulla (lateral\_posterior)

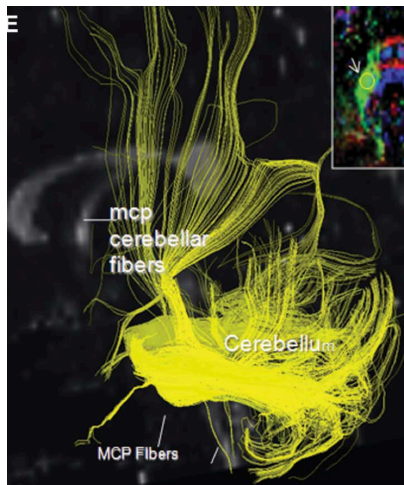


Tractographic  
Reconstruction



# Middle Cerebellar Peduncle

- Cortico\_ponto\_cerebellar
  - Cerebralcortex-pons-X(midline)-cerebellarcortex
- JHU Atlas?
  - Pontine Crossing tract



Tractographic  
Reconstruction

