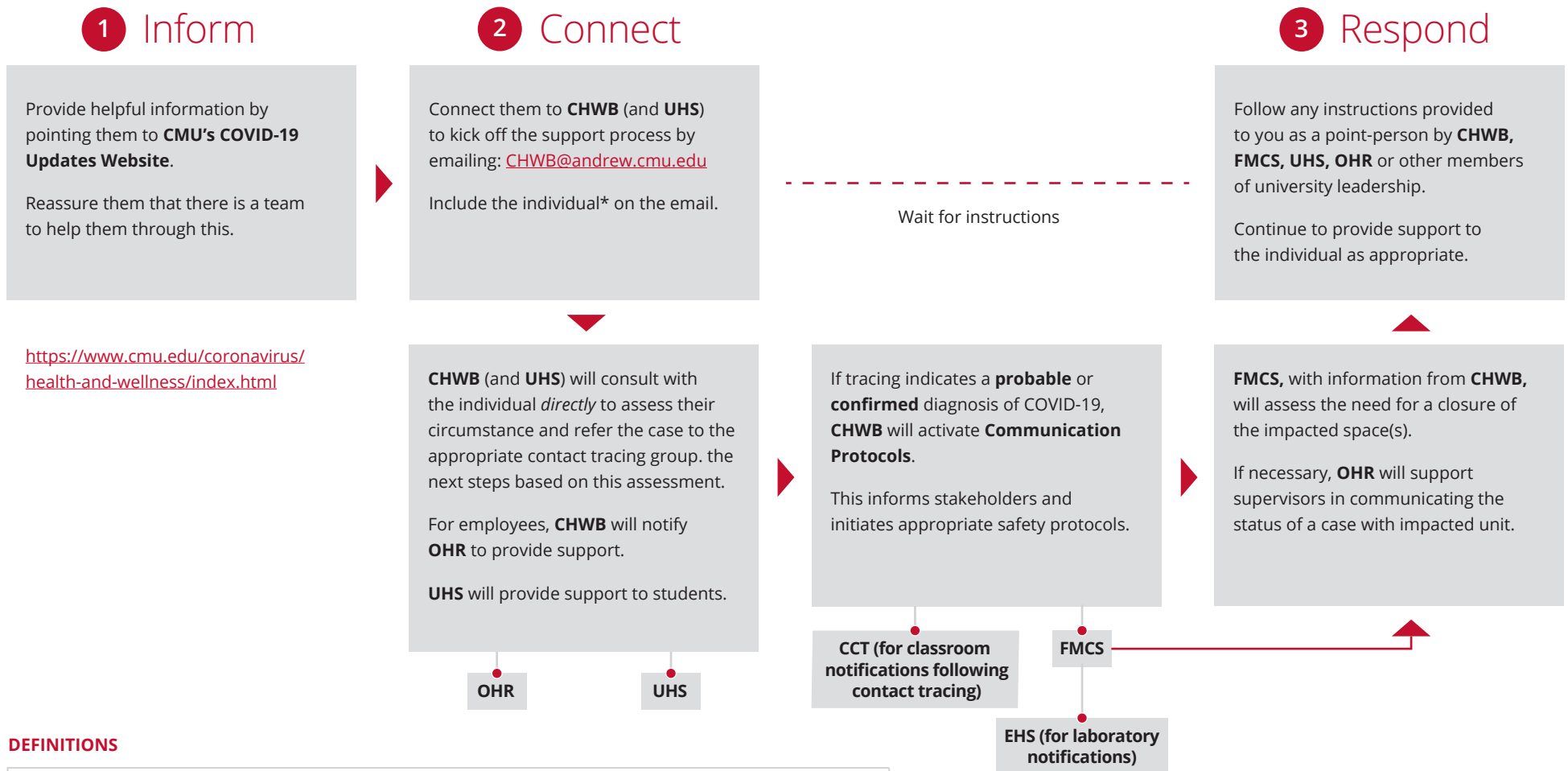


POINT PERSON Process Overview for When COVID-19 SYMPTOMS ARE REPORTED

When a CMU student, faculty or staff member reaches out to you as their **point-person** after experiencing potential COVID-19 symptoms, follow these three simple steps.



DEFINITIONS

CCT	COVID Coordination Team Communication Representative(s)
CHWB	Community Health and Well-Being
EHS	Environmental Health and Safety
FMCS	Facilities Management and Campus Services
OHR	Office of Human Resources
UHS	University Health Services
Confirmed	A diagnosis confirmed by a positive COVID-19 test conducted by an accredited medical lab.
Probable	An unvaccinated person who is symptomatic after close contact with an individual who has a confirmed COVID-19 diagnosis.

* Information regarding your circumstances will only be shared as necessary for the university to safeguard the community and to comply with any applicable laws or government orders.