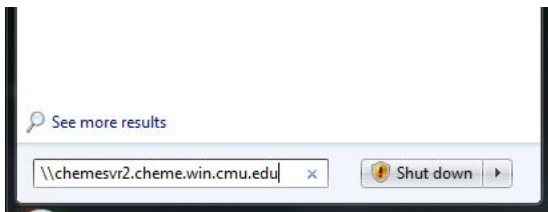


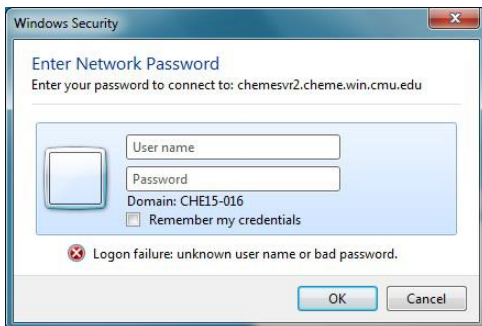
Connecting to the Software Share

The Department of Chemical Engineering maintains licenses for various software packages and makes this software available to department personnel. This software along with a subset of University provided software is available for download on chemesvr2. Installation instructions/notes are available in each respective package's folder

1. Click start and then click run.
2. Type “ \\chemesvr2.cheme.win.cmu.edu ” into the box as shown below.



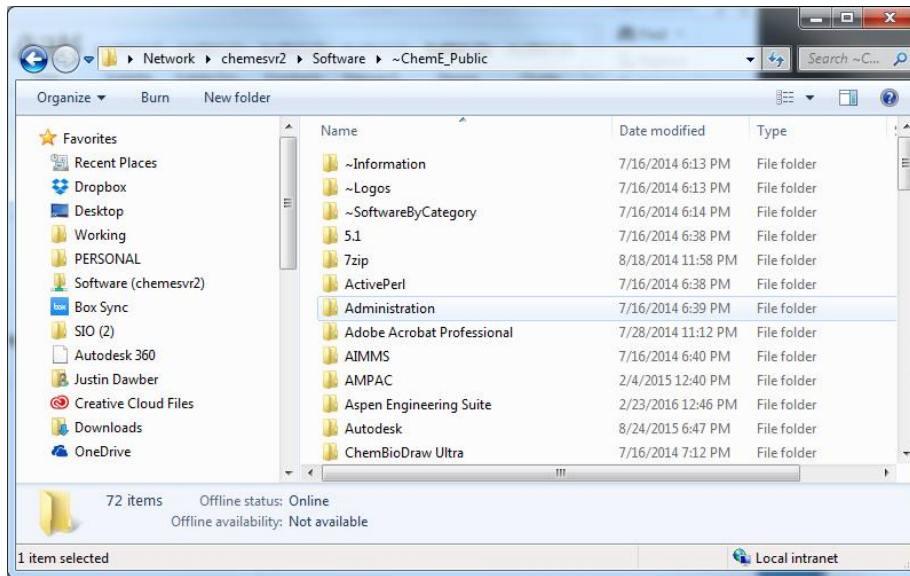
3. You will be prompted with a box titled “Enter Network Password” as shown below.



4. In the “Windows Security” box type “ chemead\andrewID” {where andrewID is your Andrew ID} in the Username field and your ChemE password in the Password field and click okay {Check “Remember my credentials to store your password”}



6. If you have done this correctly, a window titled “chemesvr2” will open. Double-Click “Software” then “~ChemE_Public” to arrive at the below window



Software is listed alphabetically by vendor. Look for “Read Me FIRST – “ files in each folder for important information. Detailed information on each package can be found on the licensed software list on the ChemE Computing Website <https://www.cmu.edu/cheme/computing>