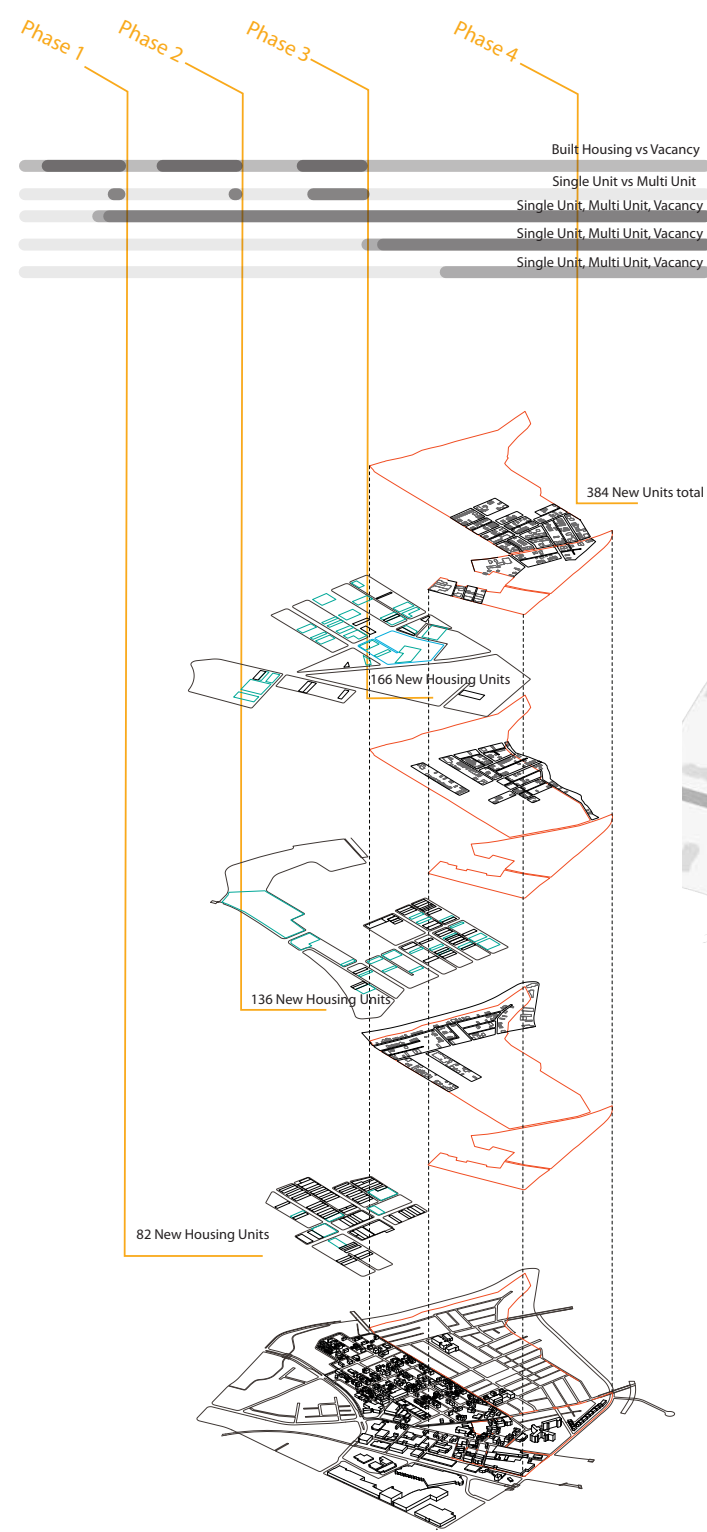


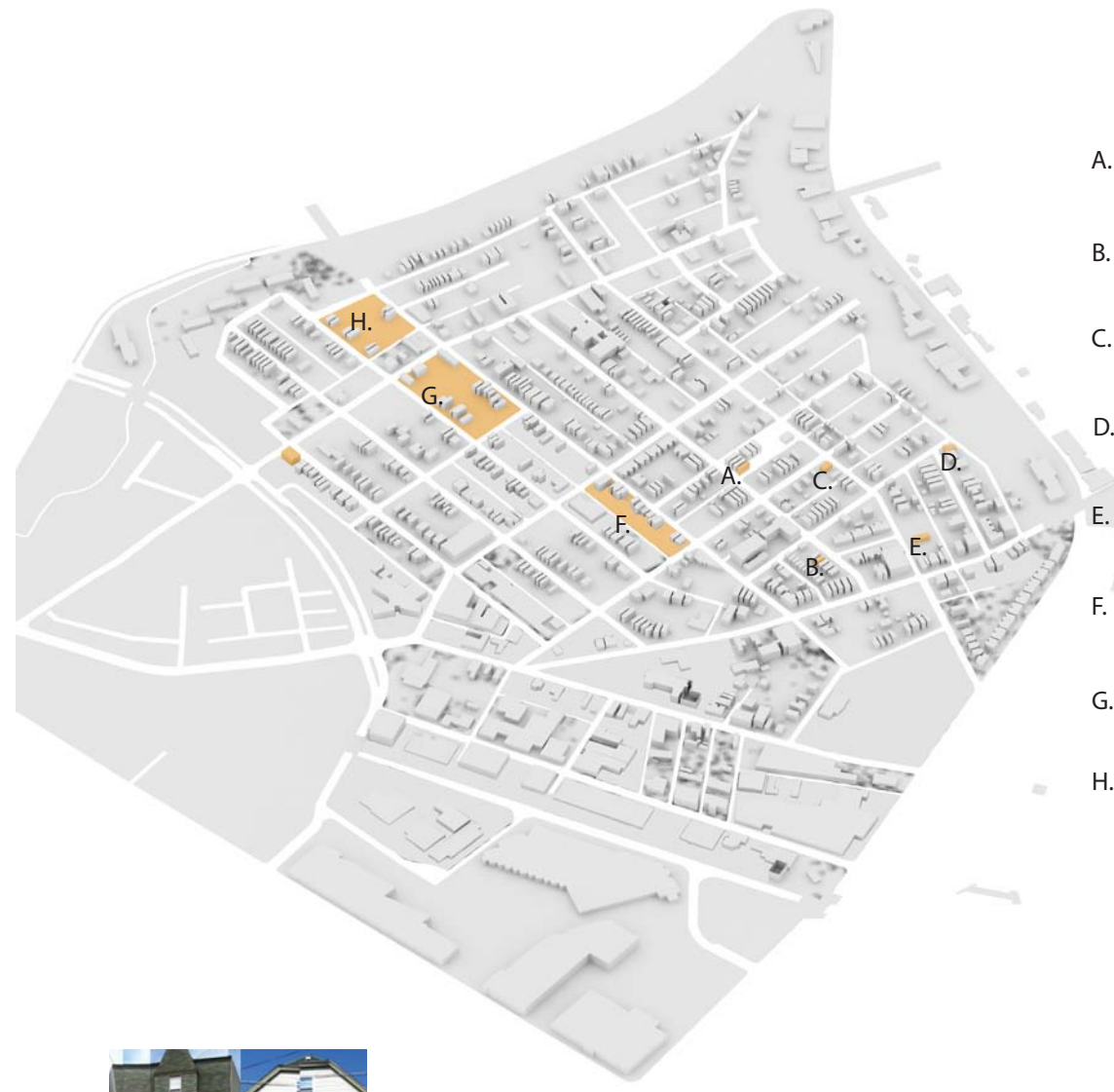


Greening Larimer
Housing for a denser community

Larimer Studio
Jonathan Kline and Rami El Samahy Instructors
Braxton Satterfield, Phillip Talley



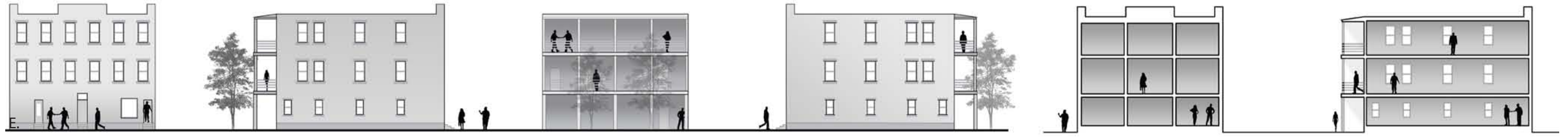
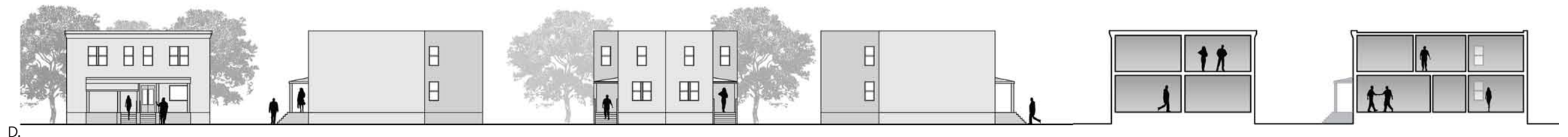
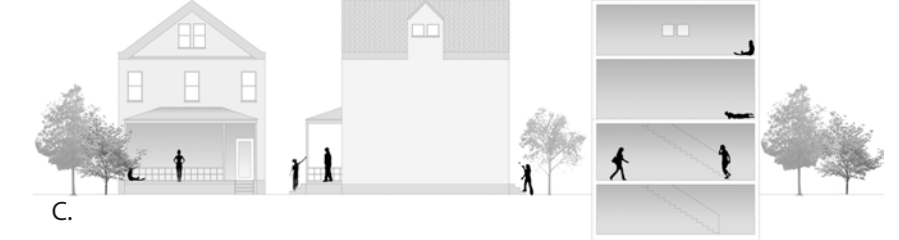
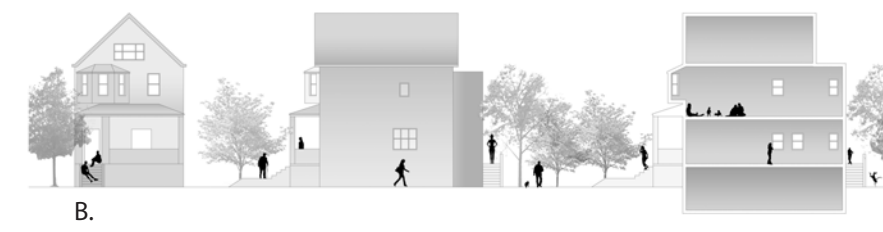
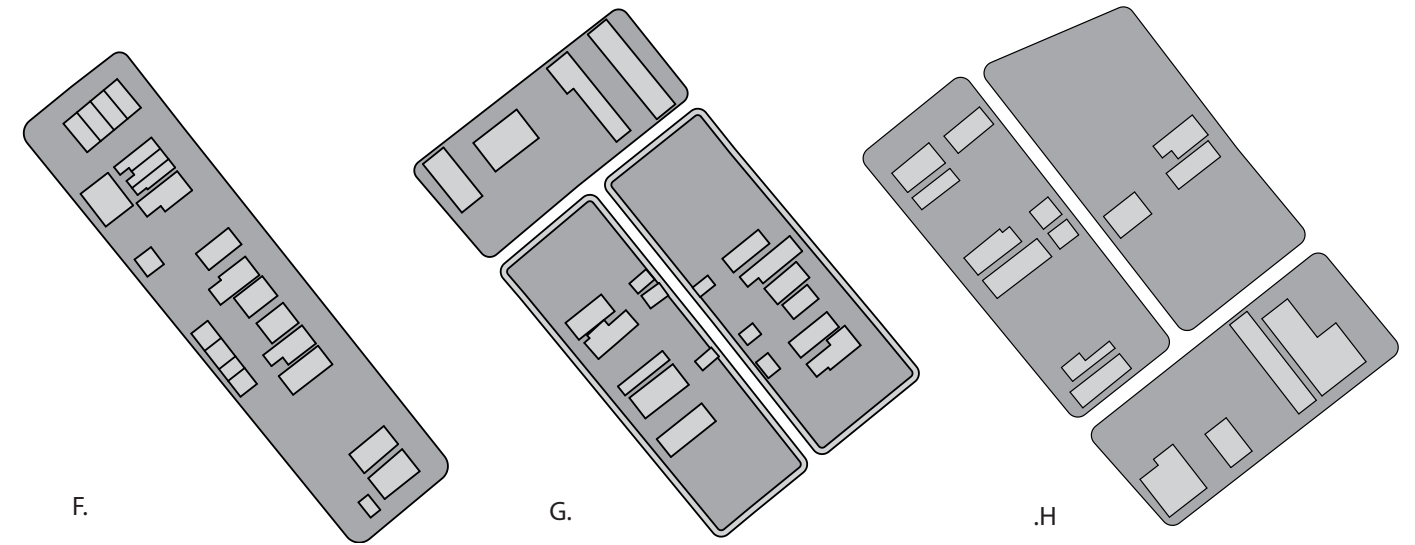
This master plan is a part of the larger consolidation+densification framework. Approximately 101 acres of land is cleared for farming purposes. Within that space, there are 384 housing units that are currently inhabited. The densification plan proposes that all of these units, with very few excess, get replaced within the denser Larimer. Four phases, each lasting roughly 10-15 years, are proposed for the overall completion of the framework. However, the construction of housing will be complete by phase three so that each resident has a place to live well before the farm land is completely cleared.

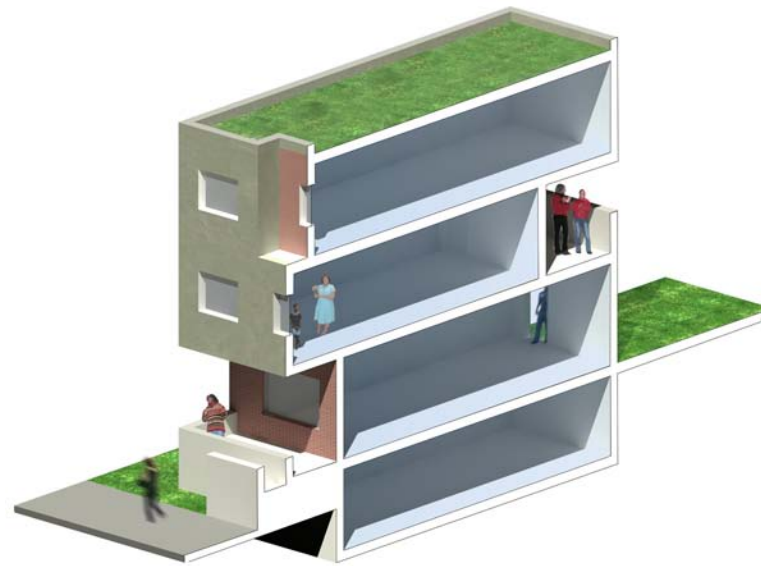


- A. Single Family House Type 1
- B. Single Family House Type 2
- C. Single Family House Type 3
- D. Duplex Unit
- E. Multi Story Apartment
- F. Narrow Block Type
- G. Consolidated Wide Block
- H. Wide Block (Edge Condition)

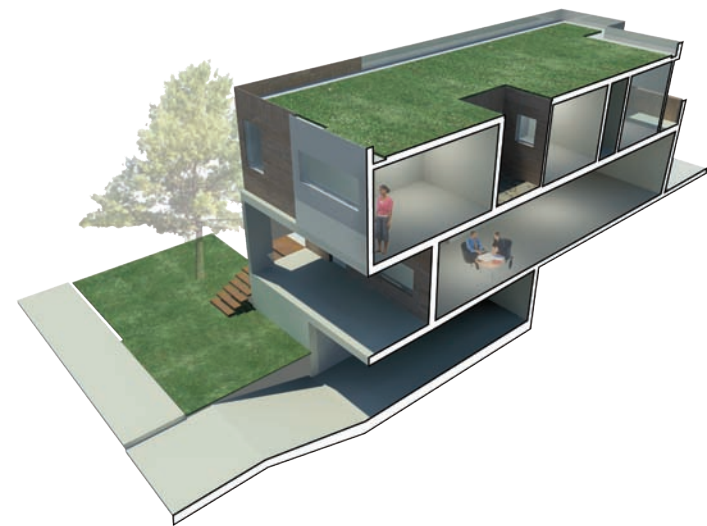
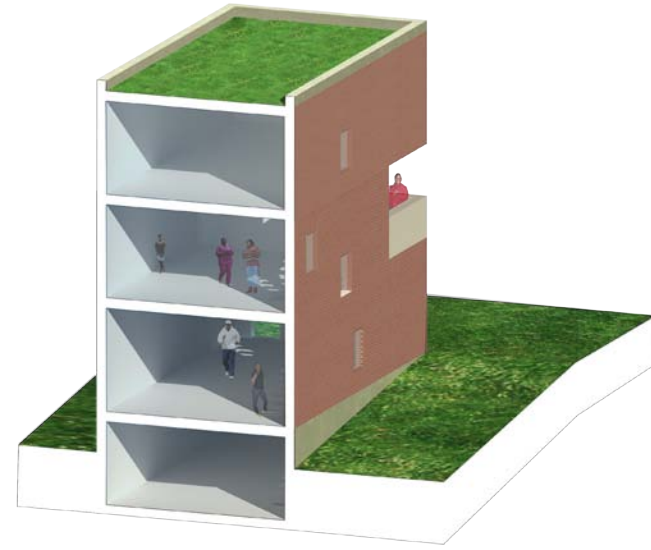
Existing Conditions

The first phase of the project was focused on creating an in depth analysis of existing housing and block typologies within Larimer. From studies of single family housing, duplex housing and multi story apartments, new housing types were developed that incorporated ideas of sustainability, communal public space and private space.





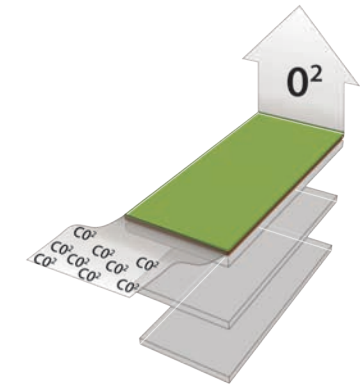
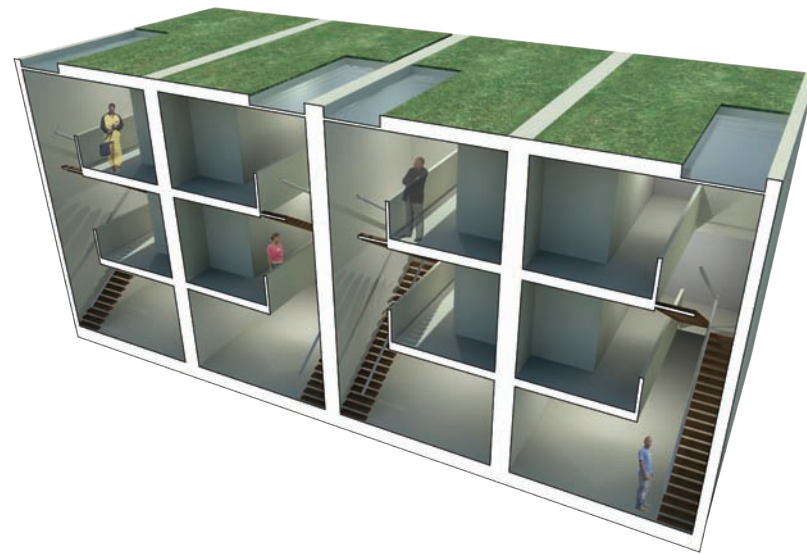
Proposed Single Family Detached Unit



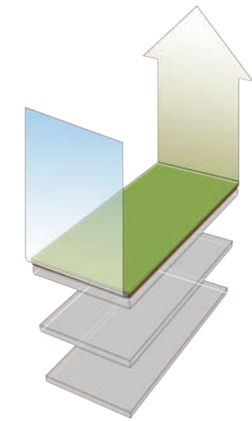
Proposed Duplex Unit



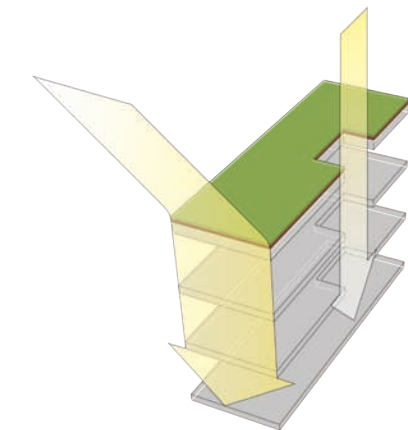
Proposed Apartment Style Unit

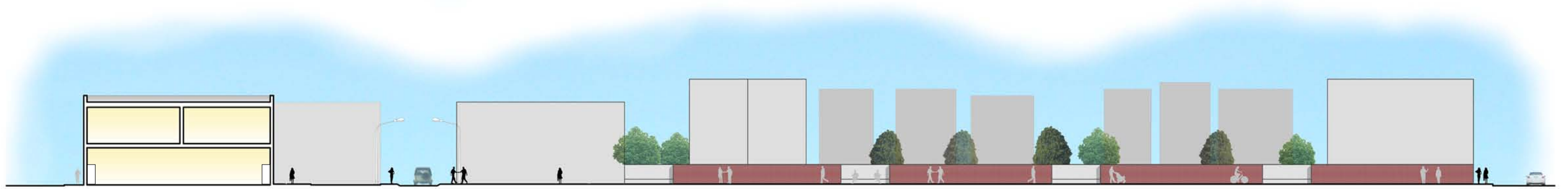


The elements that make up each housing type including porches, balconies, stoops, atriums spaces and stairwells are rearranged to create different levels of privacy and allow light to enter into each house.

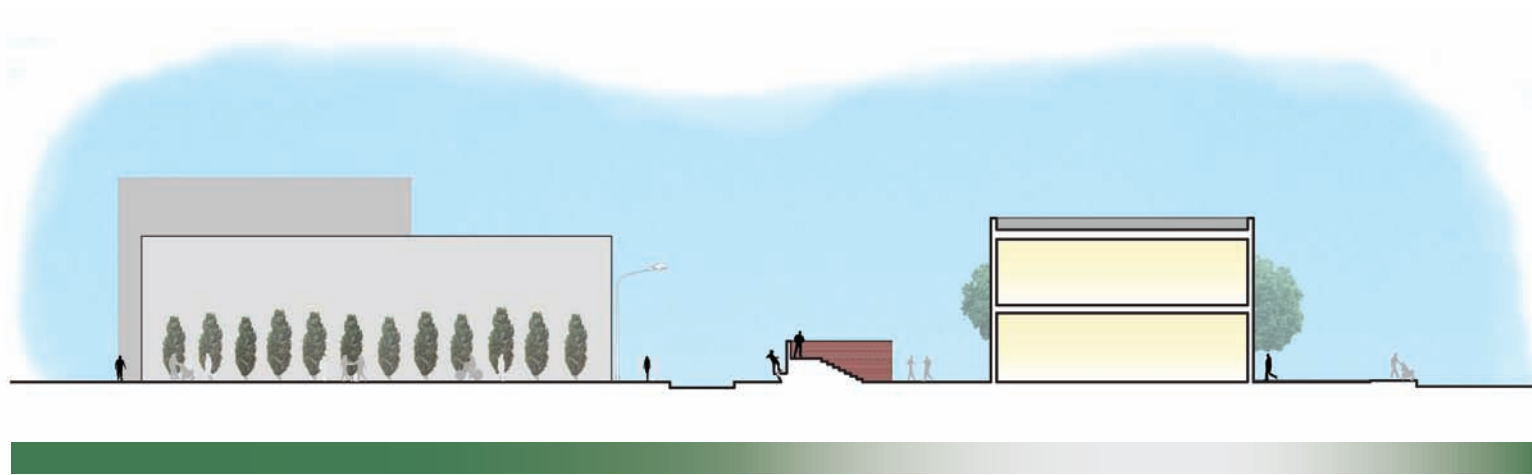


Green roofs and vertical wall systems aid in water and oxygen filtration for the neighborhood. Light wells and internal courtyards improve air circulation within the individual residence.

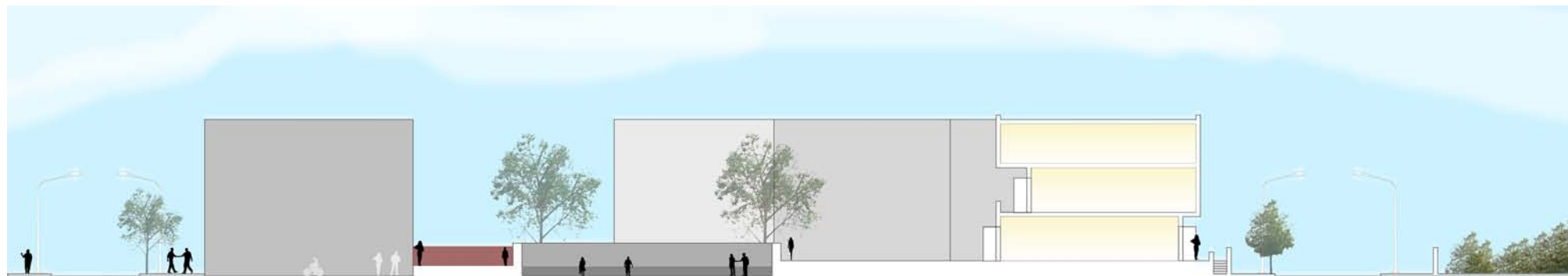




Narrow Block Type



Consolidated Wide Block Type



Wide Block (Edge) Type

Green Wall Technology allows farming to occur on the boundary of each individual property. Walls also act as separation between private yard spaces and semi public alleys.

