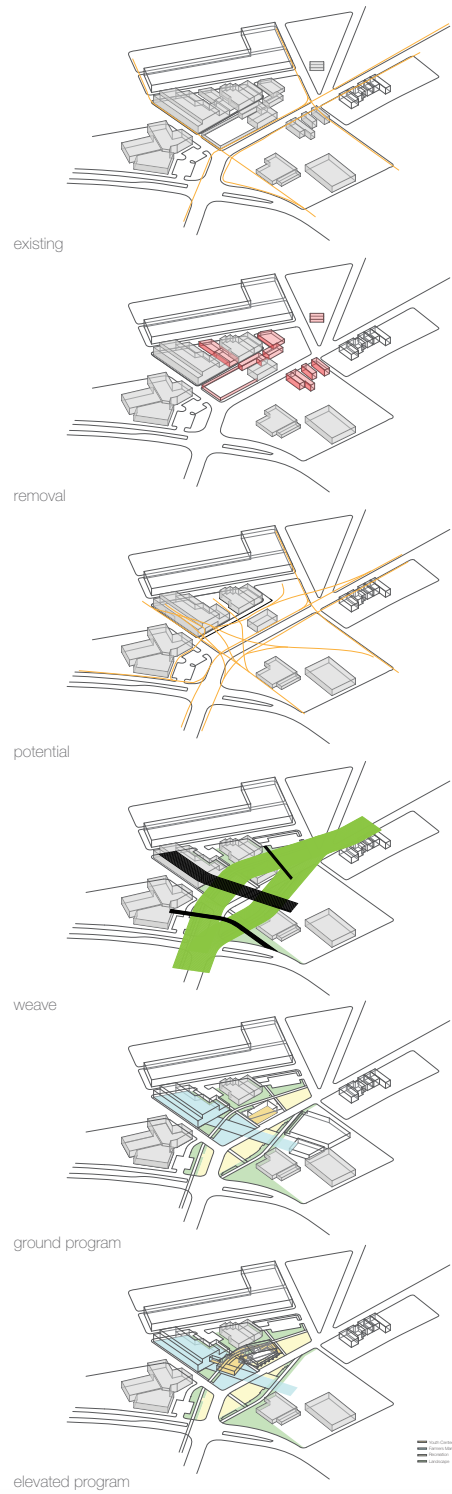


# Weaving Porosity

A Gateway Through Larimer

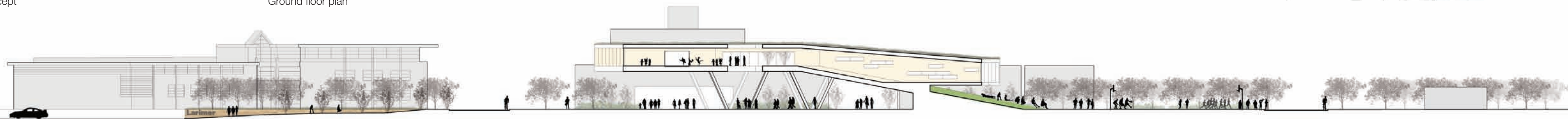
**Blake Lam + Diana Lui**  
Jonathan Kline + Rami el Samahy, Instructors



Site concept



Ground floor plan



Site section

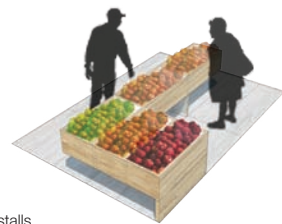
**Statement**  
 The market/young center is situated at the intersection of Frankstown Avenue and Liberty Blvd. The site is prominently positioned as a gateway into the neighborhood, but currently does not facilitate any sense of arrival nor does it function as a public amenity.

The openness of the site and the presence of the vacant structures like the warehouse present a series of opportunities with which to create a significant destination for the neighborhood and the region. The intervention began with an analysis of existing movement and a mapping of potential movement through the site. This created a strategy with which to connect the Kingsley Center with Larimer Academy, which forms a corridor of youth activity. Additionally, in order to create a more self-sustainable neighborhood, it was necessary to create a commercial anchor on the site. We chose to create a permanent place for the East Liberty Farmers market.





Plaza benches



Market stalls



Market shelves



Aromatic green wall



Seating  
Modules



Farmers market interior



Youth center interior

New movement and program are created by weaving a modular system—composed of varying material and textures—across the site. This not only shapes the outdoor landscape, new bike and pedestrian paths, and plaza, but also is also used to create the architecture. The modules themselves also facilitate a form of exhibition for commercial and educational activity.



Sectional perspective



Night life at the gateway



Street life



Outdoor youth recreation



Chess park

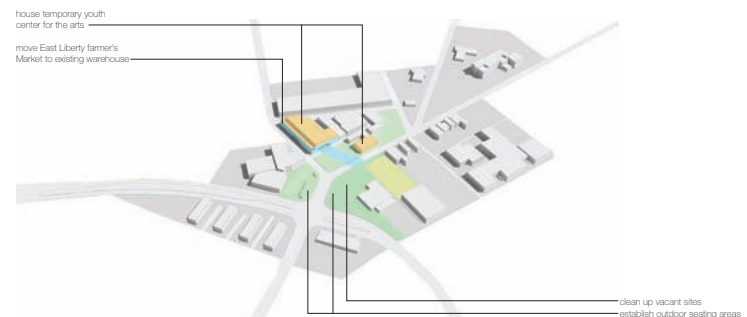


Edible garden

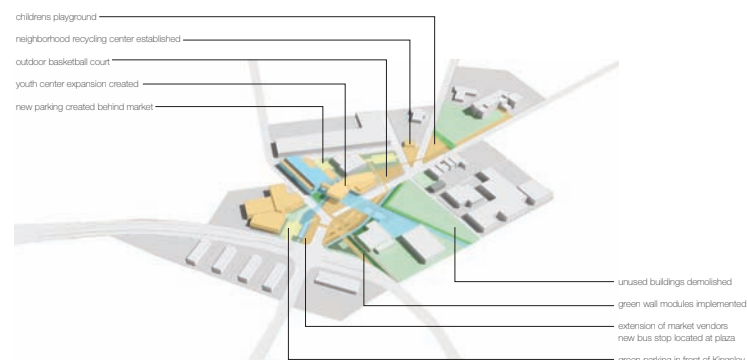


Dance floor

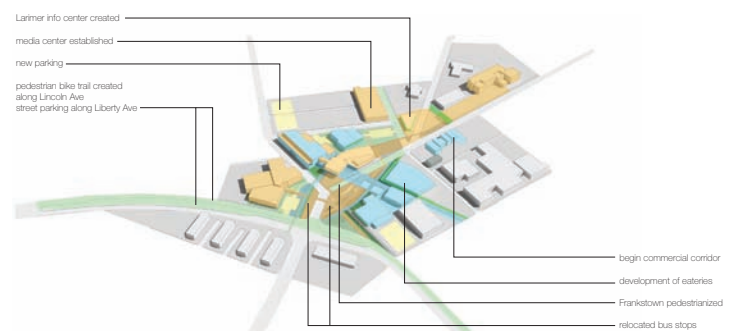
Outdoor Modules



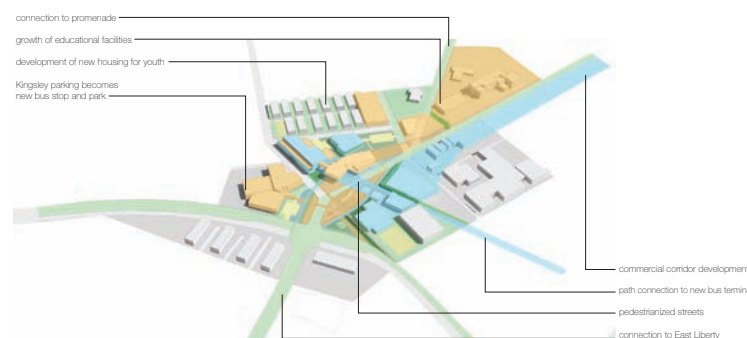
YEAR 1



YEAR 5



YEAR 10



YEAR 20

Phasing

The intervention begins with cleaning and greening the existing open spaces, as well as opening up the warehouse to accommodate the farmers market. The neighboring structure that fronts the street and the upper level of the warehouse will serve as the initial space for the youth center. Within 5 to 10 years, the building will be constructed.

As the farmers market continues to develop, so too will a new commercial corridor develop along Frankstown. This could begin as a group of restaurants that develops around a plaza across the street that brings people to the gateway during the day and night. Likewise, the expansion of youth activity will help establish this area as a significant educational hub in the region. Throughout this process, the landscape will continue to extend beyond the site in order to strengthen and expand the gateway to Larimer.



Regional plan