

# **Campus Space, Facilities, and Services**

# Table of Contents

## Campus Space, Facilities, and Services

<b>Introduction</b>	7.1
Computing Services	7.3
Facilities Operations	7.4
Utility Usage for the Pittsburgh Campus	7.5
Campus Recycling	7.6
Leadership in Energy and Environmental Design (LEED) Certification	7.7
Distribution of Students by Housing Type, Class Level, and Gender	7.8
Housing Capacity	7.9
Total Space in Square Footage by Major Division, College/Division, and Use Category	7.10
Net Assignable Space by Major Use and Division	7.11
Total Space in Square Footage by Major Division and College/Division	
by Use Category, University Owned	7.12
by Use Category, Leased Space	7.13
by A21 Utilization	7.14
by A21 Utilization, Owned Space	7.16
by A21 Utilization, Leased Space	7.18
by Building	7.20
University Police, Clery Act Report	7.23
Parking Capacity	7.24
Permit Parking Capacity by Lot	7.24
Permit Assignments by Relationship	7.24
Campus Map	7.25

## Campus Space, Facilities, and Services

### Data Sources:

The data used for the Campus Space, Facilities, and Services section of this book come from multiple data sources, as listed below:

**Campus Map:** Campus Design and Facility Development

**Campus Recycling:** Facilities Management Services

**Clery Act Report:** University Police/Campus Security

**Computing Services Statistics:** Computing Services, Planning and Project Management Office

**Facilities Operations:** Facilities Management Services Operations

**Housing Capacity:** Housing Services

**LEED Certification:** Campus Design and Facility Development

**Parking:** Parking and Transportation Services

**Square Footage:** Property Accounting Services Department Master University Space Database

**Utility Usage:** University Engineer, Facilities Management Services

### Definitions - Use Categories:

**Classroom Facilities:** General purpose classrooms, lecture halls, recitation rooms, seminar rooms, and other rooms used primarily for scheduled non-laboratory instruction.

**General Use Facilities:** Comprise a campus general service or functional support system (assembly, exhibition, dining, relaxation, merchandising, recreation, general meetings, and day care).

**Laboratory Facilities:** Rooms characterized by special purpose equipment or a specific configuration that ties instructional or research activities to a particular discipline or a closely related group of disciplines.

**Office Facilities:** Offices and conference rooms specifically assigned to each of the various academic, administrative, and service functions.

**Other:** Includes health care facilities (rooms used to provide patient care that is located in separately organized health care facilities), unclassified areas (assignable areas that are inactive or unassigned; in the process of being altered, renovated, or converted), and non-assignable areas (areas of a building that are used to support the overall activities in that building - e.g., elevators, stairs, custodial closets, circulation, and mechanical areas).

**Residential Facilities:** Housing facilities for students, faculty, staff, and outside visitors to campus.

**Leased:** All facilities that the university leases.

**Special Use Facilities:** Rooms that are sufficiently specialized in their primary activity or function to merit a unique room code. Areas and rooms for military training, athletic activity, media production, clinical activities (outside of separately organized health care facilities), demonstration, agricultural field activities, and animal and plant shelters are included here.

**Study Facilities:** Study rooms, open stack reading rooms, and library processing rooms.

**Support Facilities:** These rooms provide centralized space for auxiliary support systems, which help keep all institutional programs and activities operational. Included in these areas are computer-based processing and telecommunications, shop services, general storage and supply, vehicle storage, central services (e.g. printing and duplicating, mail, shipping and receiving, environmental testing or monitoring, laundry, or food supplies), and hazardous materials areas.

### Definitions - A21 Utilization:

**Auxiliary Services:** The auxiliary function is to be used in connection with all expense transactions under the university as auxiliary organizations. An auxiliary is defined as a self-supporting operating unit whose primary purpose is to provide goods, services, or groups of services in support of the university's education and research mission. These units are responsible for recovering both the direct and indirect costs associated with their operations through established pricing practices.

**Departmental Administration:** Expenses that have been incurred for administrative and supporting services that benefit common or joint departmental activities or objectives in academic units, dean's offices, academic departments and divisions, and organized research units.

**General Administration:** Expenses incurred for the central administrative offices of the President, Legal Counsel, Accounting, Payroll, etc. and other expenses of a general character which do not relate solely to any major function of the institution but effect the total institution (e.g., various general institutional accounts: audit fees, legal fees, etc.)

**Instruction and Department Research:** The teaching and training activities of an institution, whether they are offered for credits towards a degree or on a non-credit basis; whether they are offered through regular academic departments or separate divisions, such as summer school or an extension division. It also includes departmental research internally funded by restricted gifts, and university or departmental funds, if not separately budgeted and accounted for, sponsored research training grants are also considered to be instruction.

**Library:** Expenses that have been incurred in the operation of the library, including the cost of books and library materials purchased for the library. These expenses include the salaries and fringe benefits associated with the library.

**Non-Assignable:** Included should be space subdivisions (BOMA) of the three non-assignable room use categories (building service, circulation and mechanical) that are used to support the building's general operation.

**Operations and Maintenance of Plant:** Expenses that have been incurred by a central service organization or at the departmental level for the administration, supervision, operation, maintenance, preservation, and protection of the institution's physical plant/facilities.

**Organized Research:** Space used in conducting research and development activities FUNDED BY THIRD PARTIES, including activity supported by university cost sharing specifically identified to those contracts and grants. Sponsored research excludes community service programs, seminars, symposiums, etc., which are considered Other Sponsored Projects.

**Other Institutional Activity:** All activities within the institution except OR, IDR, or OSP. This type of space typically includes auxiliary services, development and university relations, and their associated storage and support. This category covers departments that do not support the instructional and research mission of the university and housing.

**Other Sponsored Projects:** Space used in conducting activities that are SPONSORED BY THIRD PARTIES (either Federal or non-Federal) including contract for service activities, community service programs, seminars, symposiums and conferences, etc. funded by third parties.

**Outside Agencies:** Those activities that are controlled or operated by outside agencies but are housed or otherwise supported by the institution.

**Sponsored Projects Administration:** Includes the costs of organizations established primarily to administer sponsored projects. This item would include the Office of Sponsored Research, Cost Analysis Department, Sponsored Projects Accounting, and some of the functions of the Provost's Office.

**Student Services:** Expenses that have been incurred for the administration of student affairs and for services to students.

**Unassigned:** Space, which is in the planning stage, and has been taken off line or is being saved as surge space and is usually associated with University Planning as University Controlled Space.

**Other Definitions:**

**Housing Type:**

**University Housing:** Carnegie Mellon-owned dormitories physically located on campus and Carnegie Mellon-controlled off campus housing

**Fraternity and Sorority Housing:** Fraternity or sorority-controlled housing

**Non-Carnegie Mellon Housing:** All other student residence arrangements

**LEED Certification:**

**NC:** New construction

**CS:** Core and shell

**CI:** Commercial interiors

**PILOT Only:** testing phase of requirements for a new LEED program

**Utility Usage:**

**mWh:** Megawatt hours

**Tons:** Short tons

**Therms:** 100,000 BTUs

**mmBTUs:** 1,000,000 BTUs

**sf:** Usable (interior) square feet

**FTE:** Full-time equivalent

Computing Services provides the majority of computing and network infrastructure on campus. Specific services provided include:

- Building and maintaining basic and advanced communications infrastructure, from phone lines to wireless access points
- Building and maintaining basic and advanced middleware infrastructure and directory services to provide secure and robust identity management services
- Maintaining central computing clusters and associated printing
- Deploying and maintaining shared E-mail and web services (Cyrus, Spam Filtering, MyAndrew, the Portal)
- Deploying and maintaining enterprise administrative applications
- Working with the faculty to design and teach Computing at Carnegie Mellon and providing essential and innovative instructional technologies within the classroom
- Monitoring the security and fair use of our network and protecting it against abuse and attack
- Supporting university efforts to provide emergency notification and business continuity plans
- Supporting all of these activities with documentation and communication, education, and a help center

<b>Network Connections</b>	<b>Fall 2005</b>	<b>Fall 2006</b>	<b>Fall 2007</b>	<b>Fall 2008</b>	<b>Fall 2009</b>
Ethernet	21,707	26,469	29,531	30,531	28,664
Wireless	14,602	16,550	35,564	43,881	49,041
<b>Total Network Connections</b>	<b>36,309</b>	<b>43,019</b>	<b>65,095</b>	<b>74,412</b>	<b>77,705</b>
<b>Computers in Public Clusters</b>	<b>Fall 2005</b>	<b>Fall 2006</b>	<b>Fall 2007</b>	<b>Fall 2008</b>	<b>Fall 2009</b>
Total Workstations	103	96	63	71	63
Total Macintosh	123	115	111	136	98
Total Windows	176	177	165	237	223
<b>Total Computers in Public Clusters</b>	<b>402</b>	<b>388</b>	<b>339</b>	<b>444</b>	<b>384</b>
<b>Clusters</b>	<b>2005-06</b>	<b>2006-07</b>	<b>2007-08</b>	<b>2008-09</b>	
Total cluster hours used for teaching	938	5,668	6,767	5,416	
Total cases of paper used for printing from clusters	545	820	768	930	
<b>Help Center</b>	<b>2005-06</b>	<b>2006-07</b>	<b>2007-08</b>	<b>2008-09</b>	
Number of service requests	26,924	19,956	24,675	26,747	
Average caller wait time	25 seconds	27 seconds	28 seconds	47 seconds	
<b>Andrew Accounts</b>	<b>July 05-06</b>	<b>July 06-07</b>	<b>July 07-08</b>	<b>July 08-09</b>	
Number of active Andrew Accounts	27,457	24,796	25,062	23,340	
Number of Andrew Calendar users	--	--	6,054	8,388	
	<b>2005-06</b>	<b>2006-07</b>	<b>2007-08</b>	<b>2008-09</b>	
Number of webmail users	13,070	17,996	17,713	19,048	
Average number of e-mail messages delivered weekly	7,791,779	10,641,601	13,181,262	11,680,519	
Average number of e-mail messages sent weekly by andrew.cmu.edu	439,796	372,622	388,969	655,122	
Average number of spam messages filtered weekly <sup>1</sup>	2,825,475	4,714,464	5,580,884	6,343,772	
<b>Web Portal</b>	<b>2005-06</b>	<b>2006-07</b>	<b>2007-08</b>	<b>2008-09</b>	
Number of unique users	13,969	16,436	19,574	17,691	
<b>www.cmu.edu</b>	<b>July 2006</b>	<b>July 2007</b>	<b>July 2008</b>	<b>July 2009</b>	
Bytes transferred from www.cmu.edu	2.2 TB	5.2 TB	8.2 TB	9.7 TB	
Countries visiting www.cmu.edu <sup>2</sup>	173	188	194	194	
	<b>2005-06</b>	<b>2006-07</b>	<b>2007-08</b>	<b>2008-09</b>	
Average daily number of page views	150,000	357,856	289,622	315,312	
<b>Information Security Office</b>	<b>2005-06</b>	<b>2006-07</b>	<b>2007-08</b>	<b>2008-09</b>	
Number of alerts issued by the Information Security Office	65	161	168	98	

1. Decrease due to change in data collection methods.  
2. Originating domain, not official governmental visits.

**Facilities Operations**  
**Fiscal Years 2005 to 2009**

Facilities Management Services (FMS) Operations provides the campus with maintenance projects, preventive maintenance, and repairs. Their staff includes: air conditioning mechanics, carpenters, electricians, gardeners, laborers, locksmiths, masons, painters, plumbers, receivers, steamfitters, truck drivers, and vehicle mechanics.

**Contracts:**

FMS Operations contracts for custodial services, elevator and roof maintenance, gutter cleaning, window washing, pest control, trash collection, recycling pickup, and other specialized projects. FMS receives a percentage management fee for services performed under the contracts it administers.

**Services:**

FMS Operations provides services for water, sewer, electric, gas, steam, heating and chilled distribution, preventive maintenance, routine and emergency repairs, replacements, smaller scale renovations and new installations, carpentry, keys, locks, masonry, plastering and painting, re-lamping, plumbing, heating, cooling and lighting fixtures power wiring, landscaping, lawn care, leaf, litter and snow removal, and furniture moving and setups.

	<u>2005</u>	<u>2006</u>	<u>2007</u>	<u>2008</u>	<u>2009</u>
<b><u>Facilities and Staff:</u></b>					
Total square footage	5,120,831	5,273,074	5,273,074	5,273,074	5,265,665
Maintenance services staffing FTE	77	83	89	94	94
Custodial services staffing FTE	111	112	124	122	122
Square feet per FTE maintenance	66,161	63,846	59,482	56,306	56,018
Square feet per FTE custodian	46,134	47,081	42,525	43,222	43,161
<b><u>Grounds and Maintenance:</u></b>					
Total campus acreage	136	136	144	145	143
Grounds services staffing FTE	12	13	13	13	12
Acres per groundskeeper	12	10	11	11	12
<b><u>Work Orders:</u></b>					
Number of work orders completed	48,591	52,676	53,208	53,611	55,712
Number of work orders per FTE	628	638	600	572	593

**Utility Usage for the Pittsburgh Campus  
Fiscal Years 2005 to 2009**

www.cmu.edu/fms

	<b>Units</b>	<b>2005</b>	<b>2006</b>	<b>2007</b>	<b>2008</b>	<b>2009</b>
Non-renewable electricity	mWh	91,069	93,039	88,991	89,456	80,851
Renewable electricity RECs	mWh	5,805	7,903	11,250	13,750	22,424
Renewable electricity - tariff	mWh	0	0	5,379	5,407	5,344
Electricity Total	mWh	96,874	100,942	105,620	108,613	108,618
Steam - CMU	mmBTUs	337,514	318,099	333,762	359,062	367,736
Coal - CMU share of BBP total	Tons	10,518	9,436	10,743	11,275	10,976
Natural gas - CMU share of BBP total	DTherms	197,926	198,304	198,450	230,934	245,894
Input energy - CMU share of BBP total	mmBTUs	471,405	443,629	477,774	524,075	531,261
Overall plant efficiency	pct	71.6%	71.7%	69.9%	68.5%	69.2%
Natural gas	DTherms	45,055	54,272	51,077	57,428	60,238
Area served	Usable sf	4,679,154	4,740,770	4,724,720	4,762,215	4,754,805
Electricity (normalized)	kWh/sf	20.70	21.29	22.35	22.81	22.84
Heat sources (normalized)	BTU/sf	72,141	67,110	70,652	75,410	77,353
Total Pittsburgh population		13,002	13,302	13,593	14,057	14,425
Electricity (normalized)	kWh/FTE	7,451	7,589	7,770	7,726	7,530
Heat sources (normalized)	mmBTU/FTE	25,962	23,918	24,558	25,547	25,497

## Campus Recycling

### Fiscal Years 2005 to 2009

www.cmu.edu/environment

The mission of the Green Practices Committee is to develop university practices that improve environmental quality decrease waste, and conserve natural resources and energy, thereby establishing Carnegie Mellon as a practical model for other universities and companies.

As part of the Carnegie Mellon strategic initiative to enhance the scope and impact of our education and research programs related to the environment, the Green Practices Committee was charged in April 1999 to develop a plan for an expanded environmental practices program on campus.

Green Practices subcommittees include:

- Transportation
- Built Environment
- Purchasing
- Marketing and Communications
- Energy
- Waste/Recycling and Dining
- Outdoor Environment

Recycled materials in tons	2005	2006	2007	2008	2009
Mixed office paper	178.48	215.38	209.01	201.43	202.31
Cardboard	154.67	148.14	163.86	241.59	242.93
Beverage containers (bottles and cans)	74.54	74.33	90.84	95.57	103.01
Wood waste and pallets	70.00	55.00	55.00	41.25	51.00
Food waste <sup>1</sup>	--	--	--	--	105.30
Steel and bimetals	41.70	42.87	61.81	36.60	35.00
Tires	0.82	0.88	0.97	1.75	2.91
EHS - computer equipment	28.90	65.84	19.71	29.00	18.50
Plant materials	83.98	84.33	60.84	38.65	63.92
Batteries	0.23	1.47	0.47	0.41	0.61
EHS - fluorescent tubes, oil, batteries	3.63	17.22	14.86	9.72	7.15
Textiles	3.00	3.29	3.14	3.14	3.00
Other	2.80	1.23	2.35	0.08	0.19
<b>Total recycled materials</b>	<b>642.75</b>	<b>709.98</b>	<b>682.86</b>	<b>699.19</b>	<b>835.83</b>
<b>Total waste generated (not including construction debris)</b>	<b>3,006.00</b>	<b>3,145.00</b>	<b>3,106.00</b>	<b>3,066.00</b>	<b>3,089.00</b>
<b>Percent recycled</b>	<b>17.62%</b>	<b>18.42%</b>	<b>18.02%</b>	<b>18.57%</b>	<b>21.29%</b>

1. "-" represents data not collected at the time.



**Leadership in Energy and Environmental Design (LEED) Certification  
Fall 2009**

www.cmu.edu/cdfd

The University has committed to adopting the Leadership in Energy and Environmental Design (LEED) green building rating system for all new construction and significant renovations. All such projects shall be designed and constructed so that they will meet the current version of the LEED for New Construction and Major Renovations (LEED-NC) standard. In addition the university has established the goal of achieving a minimum of a LEED Silver rating whenever possible.

Less extensive renovations shall utilize the LEED for Commercial Interiors (LEED-CI) rating system as applicable to their defined scope of work. For example, a project that is exclusively painting might only be eligible for a single LEED point under the Low-Emitting Materials, Paints, and Coatings section of the LEED-CI rating system and would be expected to meet the requirements for that point. As the scope of a project broadens, associated sections of LEED-CI would come into play.

<b>Building</b>	<b>LEED Rating</b>	<b>Year Certified</b>	<b>Square Footage</b>
<b>LEED Gold</b>			
Carnegie Mellon Café	CI 2.0	2008	9,400
Collaborative Innovation Center	CS 1.0 (Pilot Only)	2005	136,000
<b>LEED Silver</b>			
300 South Craig Street	NC 2.1	2007	68,000
407 South Craig Street	NC 2.1	2007	12,000
Henderson House	NC 2.0	2004	15,770
Porter Hall 100	CI 2.0	2009	6,800
Stever House	NC 2.0	2003	71,140
<b>LEED Certified</b>			
Posner Center	NC 2.1	2005	11,400
<b>LEED Registered (awaiting rating by USGBC)</b>			
Gates and Hillman Centers	NC 2.1		208,000
Doherty Hall Phase II	CI 2.0		170,700
GSIA First Floor	CI 2.0		7,800
GSIA West Entry Addition	CI 2.0		5,000
<b>LEED Certified Total</b>			<b>330,510</b>
<b>LEED Registered Total</b>			<b>391,500</b>
<b>Campus Total</b>			<b>4,754,805</b>
<b>Percent of campus LEED Certified as of Fall 2009</b>			<b>6.95%</b>
<b>Percent of campus LEED Registered as of Fall 2009</b>			<b>8.23%</b>

**Distribution of Students by Housing Type, Class Level, and Gender  
Fall Semester 2009**

	University Housing	Fraternity and Sorority Housing	Total	Non-Carnegie Mellon Housing	Grand Total
<b>First-year</b>					
Male	808	0	<b>808</b>	51	<b>859</b>
Female	614	0	<b>614</b>	57	<b>671</b>
<b>Total</b>	<b>1,422</b>	<b>0</b>	<b>1,422</b>	<b>108</b>	<b>1,530</b>
<b>Sophomore</b>					
Male	530	86	<b>616</b>	239	<b>855</b>
Female	424	36	<b>460</b>	176	<b>636</b>
<b>Total</b>	<b>954</b>	<b>122</b>	<b>1,076</b>	<b>415</b>	<b>1,491</b>
<b>Junior</b>					
Male	349	59	<b>408</b>	408	<b>816</b>
Female	213	58	<b>271</b>	287	<b>558</b>
<b>Total</b>	<b>562</b>	<b>117</b>	<b>679</b>	<b>695</b>	<b>1,374</b>
<b>Senior</b>					
Male	293	89	<b>382</b>	571	<b>953</b>
Female	170	43	<b>213</b>	390	<b>603</b>
<b>Total</b>	<b>463</b>	<b>132</b>	<b>595</b>	<b>961</b>	<b>1,556</b>
<b>Undergraduate Total</b>					
Male	1,980	234	<b>2,214</b>	1,269	<b>3,483</b>
Female	1,421	137	<b>1,558</b>	910	<b>2,468</b>
<b>Total</b>	<b>3,401</b>	<b>371</b>	<b>3,772</b>	<b>2,179</b>	<b>5,951</b>
<b>Graduate</b>					
Male	3	5	<b>8</b>	3,781	<b>3,789</b>
Female	3	1	<b>4</b>	1,627	<b>1,631</b>
<b>Total</b>	<b>6</b>	<b>6</b>	<b>12</b>	<b>5,408</b>	<b>5,420</b>
<b>Special</b>					
Male	0	0	<b>0</b>	36	<b>36</b>
Female	0	0	<b>0</b>	36	<b>36</b>
<b>Total</b>	<b>0</b>	<b>0</b>	<b>0</b>	<b>72</b>	<b>72</b>
<b>Grand Total</b>					
Male	<b>1,983</b>	<b>239</b>	<b>2,222</b>	<b>5,086</b>	<b>7,308</b>
Female	<b>1,424</b>	<b>138</b>	<b>1,562</b>	<b>2,573</b>	<b>4,135</b>
<b>Grand Total</b>	<b>3,407</b>	<b>377</b>	<b>3,784</b>	<b>7,659</b>	<b>11,443</b>

**Housing Capacity**  
**Fall Semester 2009**

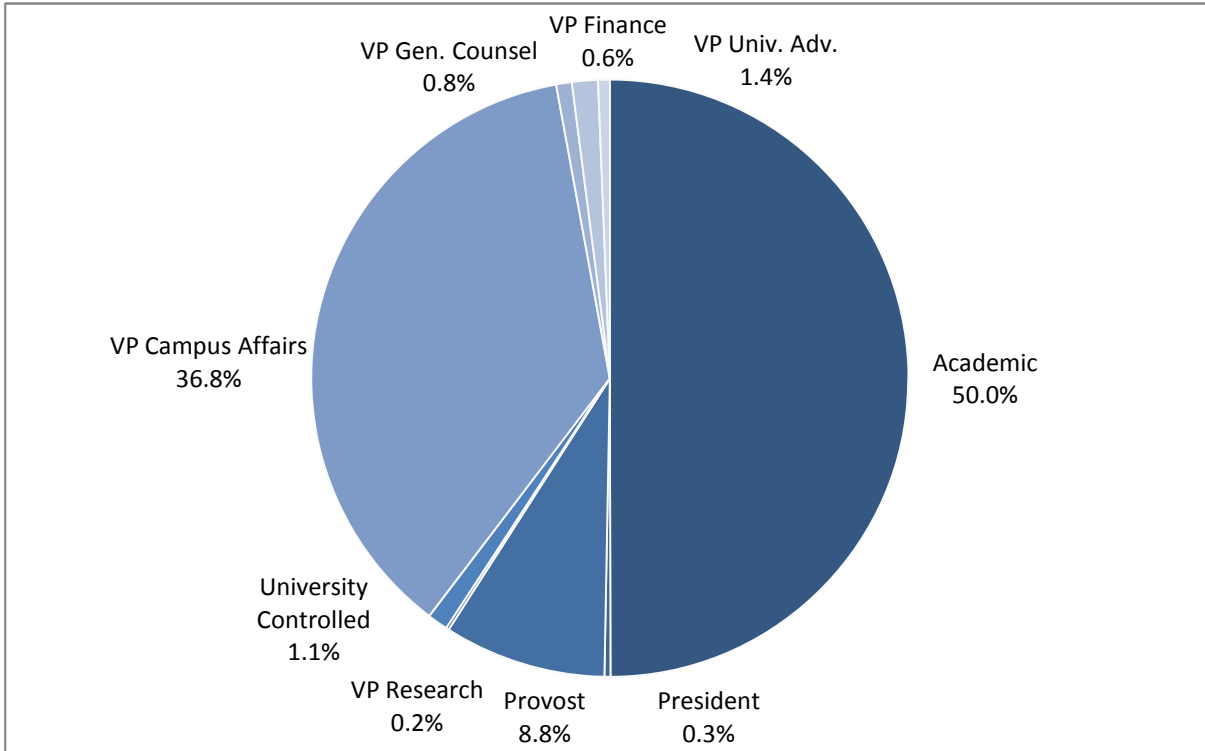
	Beds Available	Beds Filled
Boss Hall	71	71
Doherty Apartments	152	151
Donner Hall	239	249
Fairfax Apartments	311	302
Fraternities/Sororities	391	377
Hamerschlag House	165	164
Henderson Hall	60	60
London Terrace Apartments	60	60
Margaret Morrison Apartments	80	79
Margaret Morrison Special Interest Houses	64	50
McGill Hall	72	71
Morewood Gardens	455	445
Morewood E-Tower	207	207
Mudge House	308	304
Neville Apartments	22	21
Resnik House	150	149
Roselawn Terrace	60	58
Scobell Hall	88	88
Shady Oaks Apartments	82	79
Shirley Apartments	41	40
Spirit House	6	6
Stever House	254	254
Veronica Apartments	36	34
Webster Hall	233	231
Welch Hall	56	55
West Wing	146	146
Woodlawn Apartments	35	33
<b>Total</b>	<b>3,844</b>	<b>3,784</b>

**Total Space in Square Footage by Major Division, College/Division, and Use Category  
as of June 30, 2009**

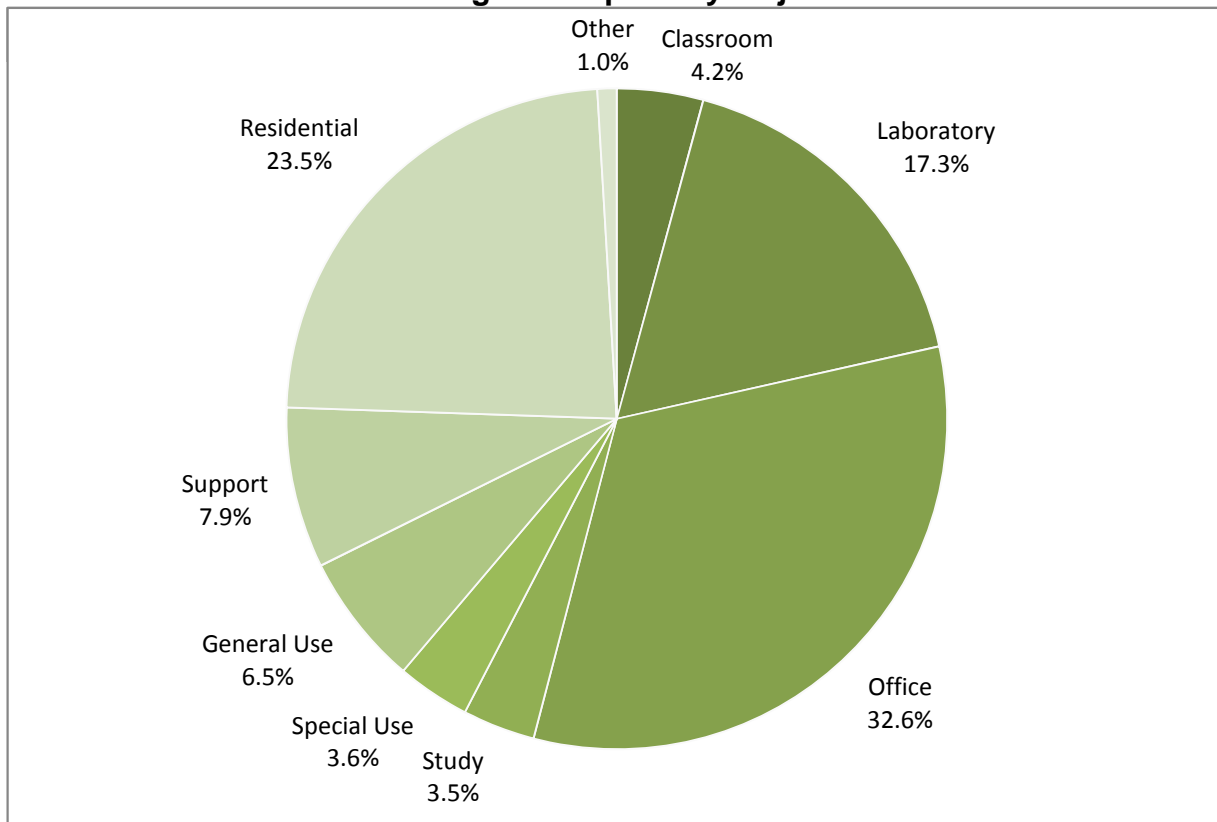
	<b>Classroom Facilities</b>	<b>Laboratory Facilities</b>	<b>Office Facilities</b>	<b>Study Facilities</b>	<b>Special Use Facilities</b>	<b>General Use Facilities</b>	<b>Support Facilities</b>	<b>Residential Facilities</b>	<b>Other</b>	<b>Total</b>
<b>President</b>	0	0	10,697	0	0	186	37	0	0	10,920
<b>VP General Counsel</b>	0	0	12,937	0	0	15,034	1,375	0	0	29,347
<b>VP Research</b>	0	0	5,324	0	0	0	264	0	0	5,588
<b>Provost</b>										
CIT	3,109	148,068	153,423	4,410	0	8,018	11,905	0	794	329,726
CFA	31,446	112,249	43,024	2,670	164	40,857	32,381	0	6,976	269,767
Heinz	6,959	792	37,162	3,747	56	3,117	943	0	314	53,091
H&SS	2,815	24,660	111,624	1,687	246	3,740	982	0	62	145,815
MCS	9,098	163,514	106,387	3,862	2,306	13,756	15,479	0	1,542	315,944
SCS	10,015	120,009	148,110	496	0	7,692	43,698	0	0	330,020
Tepper	14,277	1,276	60,221	2,154	0	8,637	1,248	0	62	87,874
SEI	0	2,704	191,715	737	0	8,740	16,560	0	0	220,456
Qatar	150	26	3,998	0	0	88	226	0	0	4,488
Other Provost	7,558	31,067	115,414	98,806	84	8,940	46,539	0	782	309,189
<b>Total</b>	<b>85,427</b>	<b>604,365</b>	<b>971,078</b>	<b>118,569</b>	<b>2,856</b>	<b>103,585</b>	<b>169,961</b>	<b>0</b>	<b>10,532</b>	<b>2,066,370</b>
<b>VP Finance</b>	<b>0</b>	<b>0</b>	<b>21,534</b>	<b>0</b>	<b>0</b>	<b>0</b>	<b>854</b>	<b>0</b>	<b>0</b>	<b>22,387</b>
<b>VP Campus Affairs</b>										
Campus Affairs Admin	60,076	0	6,641	0	0	618	269	0	0	67,605
Housing	0	0	7,085	972	0	8,820	1,793	723,405	47	742,123
Athletics	0	0	5,749	0	104,299	914	4,574	0	0	115,537
Other	2,794	1,009	46,952	5,132	7,007	97,757	95,750	98,160	13,455	368,016
<b>Total</b>	<b>62,870</b>	<b>1,009</b>	<b>66,427</b>	<b>6,104</b>	<b>111,306</b>	<b>108,109</b>	<b>102,386</b>	<b>821,565</b>	<b>13,502</b>	<b>1,293,281</b>
<b>VP Univ Advancement</b>	<b>0</b>	<b>0</b>	<b>47,780</b>	<b>0</b>	<b>0</b>	<b>0</b>	<b>1,698</b>	<b>0</b>	<b>0</b>	<b>49,478</b>
<b>Total University</b>	<b>148,298</b>	<b>605,374</b>	<b>1,135,777</b>	<b>124,674</b>	<b>114,161</b>	<b>226,914</b>	<b>276,575</b>	<b>821,565</b>	<b>24,035</b>	<b>3,477,373</b>
<b>University Controlled</b>	0	1,730	9,733	0	11,862	1,098	193	4,835	9,371	38,822
<b>Total Net Assignable Space</b>	<b>148,298</b>	<b>607,104</b>	<b>1,145,510</b>	<b>124,674</b>	<b>126,023</b>	<b>228,013</b>	<b>276,768</b>	<b>826,400</b>	<b>33,406</b>	<b>3,516,195</b>
Building Support	0	0	0	0	0	0	0	0	1,238,610	1,238,610
<b>TOTAL</b>	<b>148,298</b>	<b>607,104</b>	<b>1,145,510</b>	<b>124,674</b>	<b>126,023</b>	<b>228,013</b>	<b>276,768</b>	<b>826,400</b>	<b>1,272,016</b>	<b>4,754,805</b>

**Net Assignable Space by Major Use and Division  
as of June 30, 2009**

**Net Assignable Space by Major Division**



**Net Assignable Space by Major Use**



**Total University Owned Space in Square Footage by Major Division, College/Division, and Use Category  
as of June 30, 2009**

	Classroom Facilities	Laboratory Facilities	Office Facilities	Study Facilities	Special Use Facilities	General Use Facilities	Support Facilities	Residential Facilities	Other	Total
<b>President</b>	0	0	10,697	0	0	186	37	0	0	10,920
<b>VP General Counsel</b>	0	0	8,303	0	0	15,034	1,375	0	0	24,713
<b>VP Research</b>	0	0	5,324	0	0	0	264	0	0	5,588
<b>Provost</b>										
CIT	3,109	148,068	148,390	4,410	0	8,018	11,905	0	794	324,693
CFA	30,411	112,249	43,024	2,670	164	39,307	12,381	0	6,976	247,182
Heinz	2,628	792	32,607	3,747	56	3,117	943	0	314	44,205
H&SS	2,815	24,159	108,620	1,687	246	3,740	982	0	62	142,310
MCS	9,098	151,514	106,387	3,862	2,306	13,756	15,479	0	1,542	303,944
SCS	10,015	58,871	123,992	496	0	5,467	14,734	0	0	213,575
Tepper	14,277	1,276	49,401	2,154	0	8,637	1,248	0	62	77,054
SEI	0	0	75,634	574	0	8,740	10,067	0	0	95,016
Qatar	150	26	3,998	0	0	88	226	0	0	4,488
Other Provost	5,962	25,986	78,269	98,806	84	7,768	41,911	0	782	259,568
<b>Total</b>	<b>78,465</b>	<b>522,941</b>	<b>770,322</b>	<b>118,406</b>	<b>2,856</b>	<b>98,638</b>	<b>109,876</b>	<b>0</b>	<b>10,532</b>	<b>1,712,035</b>
<b>VP Finance</b>	<b>0</b>	<b>0</b>	<b>21,534</b>	<b>0</b>	<b>0</b>	<b>0</b>	<b>854</b>	<b>0</b>	<b>0</b>	<b>22,387</b>
<b>VP Campus Affairs</b>										
Campus Affairs Admin	60,076	0	6,641	0	0	618	269	0	0	67,605
Housing	0	0	7,085	972	0	8,820	1,793	517,590	47	536,308
Athletics	0	0	5,749	0	104,299	914	2,699	0	0	113,662
Other	2,794	1,009	46,952	5,132	7,007	97,757	95,750	98,160	13,455	368,016
<b>Total</b>	<b>62,870</b>	<b>1,009</b>	<b>66,427</b>	<b>6,104</b>	<b>111,306</b>	<b>108,109</b>	<b>100,511</b>	<b>615,750</b>	<b>13,502</b>	<b>1,085,591</b>
<b>VP Univ Advancement</b>	<b>0</b>	<b>0</b>	<b>8,652</b>	<b>0</b>	<b>0</b>	<b>0</b>	<b>1,698</b>	<b>0</b>	<b>0</b>	<b>10,350</b>
<b>Total University</b>	<b>141,336</b>	<b>523,950</b>	<b>891,259</b>	<b>124,511</b>	<b>114,161</b>	<b>221,968</b>	<b>214,615</b>	<b>615,750</b>	<b>24,035</b>	<b>2,871,585</b>
<b>University Controlled</b>	0	1,730	8,111	0	11,862	1,098	193	4,835	9,371	37,200
<b>Total Net Assignable Space</b>	<b>141,336</b>	<b>525,680</b>	<b>899,370</b>	<b>124,511</b>	<b>126,023</b>	<b>223,066</b>	<b>214,808</b>	<b>620,585</b>	<b>33,406</b>	<b>2,908,785</b>
Building Support	0	0	0	0	0	0	0	0	1,217,432	1,217,432
<b>TOTAL</b>	<b>141,336</b>	<b>525,680</b>	<b>899,370</b>	<b>124,511</b>	<b>126,023</b>	<b>223,066</b>	<b>214,808</b>	<b>620,585</b>	<b>1,250,838</b>	<b>4,126,217</b>

**Total Leased Space in Square Footage by Major Division, College/Division, and Use Category  
as of June 30, 2009**

	<b>Classroom Facilities</b>	<b>Laboratory Facilities</b>	<b>Office Facilities</b>	<b>Study Facilities</b>	<b>Special Use Facilities</b>	<b>General Use Facilities</b>	<b>Support Facilities</b>	<b>Residential Facilities</b>	<b>Other</b>	<b>Total</b>
<b>President</b>	0	0	0	0	0	0	0	0	0	0
<b>VP General Counsel</b>	0	0	4,634	0	0	0	0	0	0	4,634
<b>VP Research</b>	0	0	0	0	0	0	0	0	0	0
<b>Provost</b>										
CIT	0	0	5,033	0	0	0	0	0	0	5,033
CFA	1,035	0	0	0	0	1,550	20,000	0	0	22,585
Heinz	4,331	0	4,555	0	0	0	0	0	0	8,886
H&SS	0	501	3,004	0	0	0	0	0	0	3,505
MCS	0	12,000	0	0	0	0	0	0	0	12,000
SCS	0	61,138	24,117	0	0	2,225	28,964	0	0	116,445
Tepper	0	0	10,820	0	0	0	0	0	0	10,820
SEI	0	2,704	116,081	163	0	0	6,493	0	0	125,441
Qatar	0	0	0	0	0	0	0	0	0	0
Other Provost	1,596	5,081	37,145	0	0	1,171	4,628	0	0	49,621
<b>Total</b>	<b>6,962</b>	<b>81,424</b>	<b>200,755</b>	<b>163</b>	<b>0</b>	<b>4,946</b>	<b>60,085</b>	<b>0</b>	<b>0</b>	<b>354,336</b>
<b>VP Finance</b>	<b>0</b>	<b>0</b>	<b>0</b>	<b>0</b>	<b>0</b>	<b>0</b>	<b>0</b>	<b>0</b>	<b>0</b>	<b>0</b>
<b>VP Campus Affairs</b>										
Campus Affairs Admin	0	0	0	0	0	0	0	0	0	0
Housing	0	0	0	0	0	0	0	205,815	0	205,815
Athletics	0	0	0	0	0	0	1,875	0	0	1,875
Other	0	0	0	0	0	0	0	0	0	0
<b>Total</b>	<b>0</b>	<b>0</b>	<b>0</b>	<b>0</b>	<b>0</b>	<b>0</b>	<b>1,875</b>	<b>205,815</b>	<b>0</b>	<b>207,690</b>
<b>VP Univ Advancement</b>	<b>0</b>	<b>0</b>	<b>39,128</b>	<b>0</b>	<b>0</b>	<b>0</b>	<b>0</b>	<b>0</b>	<b>0</b>	<b>39,128</b>
<b>Total University</b>	<b>6,962</b>	<b>81,424</b>	<b>244,518</b>	<b>163</b>	<b>0</b>	<b>4,946</b>	<b>61,960</b>	<b>205,815</b>	<b>0</b>	<b>605,788</b>
<b>University Controlled</b>	<b>0</b>	<b>0</b>	<b>1,622</b>	<b>0</b>	<b>0</b>	<b>0</b>	<b>0</b>	<b>0</b>	<b>0</b>	<b>1,622</b>
<b>Total Net Assignable Space</b>	<b>6,962</b>	<b>81,424</b>	<b>246,140</b>	<b>163</b>	<b>0</b>	<b>4,946</b>	<b>61,960</b>	<b>205,815</b>	<b>0</b>	<b>607,410</b>
Building Support	0	0	0	0	0	0	0	0	21,178	21,178
<b>TOTAL</b>	<b>6,962</b>	<b>81,424</b>	<b>246,140</b>	<b>163</b>	<b>0</b>	<b>4,946</b>	<b>61,960</b>	<b>205,815</b>	<b>21,178</b>	<b>628,588</b>

**Total Space in Square Footage by Major Division, College/Division, and A21 Utilization  
as of June 30, 2009**

	<b>Instruction and Department Research</b>	<b>Organized Research</b>	<b>Other Institutional Activity</b>	<b>Other Sponsored Projects</b>	<b>Operations and Maintenance of Plant</b>	<b>General Administration</b>	<b>Departmental Administration</b>
<b>President</b>	<b>109</b>	<b>0</b>	<b>0</b>	<b>0</b>	<b>0</b>	<b>10,644</b>	<b>167</b>
<b>VP General Counsel</b>	<b>0</b>	<b>0</b>	<b>11,641</b>	<b>0</b>	<b>2,744</b>	<b>14,962</b>	<b>0</b>
<b>VP Research</b>	<b>88</b>	<b>0</b>	<b>3,100</b>	<b>0</b>	<b>0</b>	<b>298</b>	<b>125</b>
<b>Provost</b>							
CIT	119,335	153,404	2,418	1,312	0	388	43,834
CFA	228,508	4,303	9,435	2,566	0	0	17,568
Heinz	31,413	1,015	646	1,179	0	0	16,779
H&SS	82,631	39,498	872	205	0	0	19,121
MCS	123,017	145,100	5,162	4,091	0	0	24,538
SCS	58,643	222,425	911	8,774	0	0	38,638
Tepper	49,066	2,621	2,789	0	0	0	21,246
SEI	0	217,426	3,030	0	0	0	0
Qatar	0	0	4,488	0	0	0	0
Other Provost	27,034	29,494	21,127	21,547	4,733	58,927	9,296
<b>Total</b>	<b>719,647</b>	<b>815,286</b>	<b>50,878</b>	<b>39,674</b>	<b>4,733</b>	<b>59,315</b>	<b>191,020</b>
<b>VP Finance</b>	<b>0</b>	<b>0</b>	<b>238</b>	<b>0</b>	<b>0</b>	<b>18,098</b>	<b>0</b>
<b>VP Campus Affairs</b>							
Campus Affairs Admin	60,773	0	0	0	0	0	0
Housing	36	0	0	0	0	0	0
Athletics	6,570	0	0	0	0	0	0
Other	2,874	0	38,806	0	81,274	28,795	0
<b>Total</b>	<b>70,253</b>	<b>0</b>	<b>38,806</b>	<b>0</b>	<b>81,274</b>	<b>28,795</b>	<b>0</b>
<b>VP Univ Advancement</b>	<b>0</b>	<b>0</b>	<b>49,291</b>	<b>0</b>	<b>0</b>	<b>187</b>	<b>0</b>
<b>Total University</b>	<b>790,098</b>	<b>815,286</b>	<b>153,955</b>	<b>39,674</b>	<b>88,752</b>	<b>132,298</b>	<b>191,313</b>
<b>University Controlled</b>	<b>0</b>	<b>0</b>	<b>12,501</b>	<b>0</b>	<b>0</b>	<b>193</b>	<b>0</b>
<b>Total Net Assignable Space</b>	<b>790,098</b>	<b>815,286</b>	<b>166,456</b>	<b>39,674</b>	<b>88,752</b>	<b>132,491</b>	<b>191,313</b>
Building Support	321	76	47	0	49	0	622
<b>TOTAL</b>	<b>790,419</b>	<b>815,362</b>	<b>166,503</b>	<b>39,674</b>	<b>88,801</b>	<b>132,491</b>	<b>191,935</b>



	<b>Sponsored Projects Administration</b>	<b>Library</b>	<b>Student Services</b>	<b>Outside Agencies</b>	<b>Auxiliary Services</b>	<b>Unassigned</b>	<b>Non- Assignable</b>	<b>Total</b>
<b>President</b>	0	0	0	0	0	0	0	10,920
<b>VP General Counsel</b>	0	0	0	0	0	0	0	29,347
<b>VP Research</b>	1,976	0	0	0	0	0	0	5,588
<b>Provost</b>								
CIT	0	0	656	257	0	8,123	0	329,726
CFA	0	0	576	0	0	6,811	0	269,767
Heinz	0	0	1,614	186	0	257	0	53,091
H&SS	235	0	1,843	0	0	1,411	0	145,815
MCS	0	0	0	585	0	13,451	0	315,944
SCS	0	0	628	0	0	0	0	330,020
Tepper	69	0	9,904	0	0	2,179	0	87,874
SEI	0	0	0	0	0	0	0	220,456
Qatar	0	0	0	0	0	0	0	4,488
Other Provost	0	117,508	14,343	0	3,743	1,438	0	309,189
<b>Total</b>	<b>304</b>	<b>117,508</b>	<b>29,564</b>	<b>1,028</b>	<b>3,743</b>	<b>33,670</b>	<b>0</b>	<b>2,066,370</b>
<b>VP Finance</b>	<b>3,833</b>	<b>0</b>	<b>0</b>	<b>0</b>	<b>0</b>	<b>218</b>	<b>0</b>	<b>22,387</b>
<b>VP Campus Affairs</b>								
Campus Affairs Admin	0	0	6,833	0	0	0	0	67,605
Housing	0	0	0	0	742,086	0	0	742,123
Athletics	0	0	102,646	0	6,321	0	0	115,537
Other	0	0	24,759	0	181,664	3,781	6,063	368,016
<b>Total</b>	<b>0</b>	<b>0</b>	<b>134,238</b>	<b>0</b>	<b>930,071</b>	<b>3,781</b>	<b>6,063</b>	<b>1,293,281</b>
<b>VP Univ Advancement</b>	<b>0</b>	<b>0</b>	<b>0</b>	<b>0</b>	<b>0</b>	<b>0</b>	<b>0</b>	<b>49,478</b>
<b>Total University</b>	<b>6,113</b>	<b>117,508</b>	<b>163,801</b>	<b>1,028</b>	<b>933,814</b>	<b>37,670</b>	<b>6,063</b>	<b>3,477,373</b>
<b>University Controlled</b>	0	0	0	13,099	0	13,030	0	38,822
<b>Total Net Assignable Space</b>	<b>6,113</b>	<b>117,508</b>	<b>163,801</b>	<b>14,127</b>	<b>933,814</b>	<b>50,700</b>	<b>6,063</b>	<b>3,516,195</b>
Building Support	0	0	196	0	0	219	1,237,080	1,238,610
<b>TOTAL</b>	<b>6,113</b>	<b>117,508</b>	<b>163,997</b>	<b>14,127</b>	<b>933,814</b>	<b>50,919</b>	<b>1,243,143</b>	<b>4,754,805</b>

**Total University Owned Space in Square Footage by Major Division, College/Division, and A21 Utilization  
as of June 30, 2009**

	<b>Instruction and Department Research</b>	<b>Organized Research</b>	<b>Other Institutional Activity</b>	<b>Other Sponsored Projects</b>	<b>Operations and Maintenance of Plant</b>	<b>General Administration</b>	<b>Departmental Administration</b>
<b>President</b>	<b>109</b>	<b>0</b>	<b>0</b>	<b>0</b>	<b>0</b>	<b>10,644</b>	<b>167</b>
<b>VP General Counsel</b>	<b>0</b>	<b>0</b>	<b>11,641</b>	<b>0</b>	<b>2,744</b>	<b>10,328</b>	<b>0</b>
<b>VP Research</b>	<b>88</b>	<b>0</b>	<b>3,100</b>	<b>0</b>	<b>0</b>	<b>298</b>	<b>125</b>
<b>Provost</b>							
CIT	115,288	152,686	2,418	1,312	0	388	43,701
CFA	205,923	4,303	9,435	2,566	0	0	17,568
Heinz	23,407	1,015	646	1,179	0	0	15,899
H&SS	81,640	37,189	872	205	0	0	18,916
MCS	123,017	133,100	5,162	4,091	0	0	24,538
SCS	57,306	129,230	911	544	0	0	24,956
Tepper	38,246	2,621	2,789	0	0	0	21,246
SEI	0	91,985	3,030	0	0	0	0
Qatar	0	0	4,488	0	0	0	0
Other Provost	18,601	6,322	16,788	21,184	4,733	49,497	5,991
<b>Total</b>	<b>663,428</b>	<b>558,451</b>	<b>46,539</b>	<b>31,081</b>	<b>4,733</b>	<b>49,885</b>	<b>172,815</b>
<b>VP Finance</b>	<b>0</b>	<b>0</b>	<b>238</b>	<b>0</b>	<b>0</b>	<b>18,098</b>	<b>0</b>
<b>VP Campus Affairs</b>							
Campus Affairs Admin	60,773	0	0	0	0	0	0
Housing	36	0	0	0	0	0	0
Athletics	6,570	0	0	0	0	0	0
Other	2,874	0	38,806	0	81,274	28,795	0
<b>Total</b>	<b>70,253</b>	<b>0</b>	<b>38,806</b>	<b>0</b>	<b>81,274</b>	<b>28,795</b>	<b>0</b>
<b>VP Univ Advancement</b>	<b>0</b>	<b>0</b>	<b>10,163</b>	<b>0</b>	<b>0</b>	<b>187</b>	<b>0</b>
<b>Total University</b>	<b>733,878</b>	<b>558,452</b>	<b>110,487</b>	<b>31,082</b>	<b>88,752</b>	<b>118,234</b>	<b>173,108</b>
<b>University Controlled</b>	<b>0</b>	<b>0</b>	<b>12,501</b>	<b>0</b>	<b>0</b>	<b>193</b>	<b>0</b>
<b>Total Net Assignable Space</b>	<b>733,878</b>	<b>558,452</b>	<b>122,988</b>	<b>31,082</b>	<b>88,752</b>	<b>118,427</b>	<b>173,108</b>
Building Support	321	76	47	0	49	0	622
<b>TOTAL</b>	<b>734,199</b>	<b>558,528</b>	<b>123,035</b>	<b>31,082</b>	<b>88,801</b>	<b>118,427</b>	<b>173,730</b>

	Sponsored Projects Administration	Library	Student Services	Outside Agencies	Auxiliary Services	Unassigned	Non- Assignable	Total
<b>President</b>	0	0	0	0	0	0	0	10,920
<b>VP General Counsel</b>	0	0	0	0	0	0	0	24,713
<b>VP Research</b>	1,976	0	0	0	0	0	0	5,588
<b>Provost</b>								
CIT	0	0	656	185	0	8,059	0	324,693
CFA	0	0	576	0	0	6,811	0	247,182
Heinz	0	0	1,614	186	0	257	0	44,205
H&SS	235	0	1,843	0	0	1,411	0	142,310
MCS	0	0	0	585	0	13,451	0	303,944
SCS	0	0	628	0	0	0	0	213,575
Tepper	69	0	9,904	0	0	2,179	0	77,054
SEI	0	0	0	0	0	0	0	95,016
Qatar	0	0	0	0	0	0	0	4,488
Other Provost	0	117,508	14,343	0	3,743	858	0	259,568
<b>Total</b>	<b>304</b>	<b>117,508</b>	<b>29,564</b>	<b>956</b>	<b>3,743</b>	<b>33,026</b>	<b>0</b>	<b>1,712,035</b>
<b>VP Finance</b>	<b>3,833</b>	<b>0</b>	<b>0</b>	<b>0</b>	<b>0</b>	<b>218</b>	<b>0</b>	<b>22,387</b>
<b>VP Campus Affairs</b>								
Campus Affairs Admin	0	0	6,833	0	0	0	0	67,605
Housing	0	0	0	0	536,271	0	0	536,308
Athletics	0	0	100,771	0	6,321	0	0	113,662
Other	0	0	24,759	0	181,664	3,781	6,063	368,016
<b>Total</b>	<b>0</b>	<b>0</b>	<b>132,363</b>	<b>0</b>	<b>724,256</b>	<b>3,781</b>	<b>6,063</b>	<b>1,085,591</b>
<b>VP Univ Advancement</b>	<b>0</b>	<b>0</b>	<b>0</b>	<b>0</b>	<b>0</b>	<b>0</b>	<b>0</b>	<b>10,350</b>
<b>Total University</b>	<b>6,113</b>	<b>117,508</b>	<b>161,926</b>	<b>956</b>	<b>727,999</b>	<b>37,026</b>	<b>6,063</b>	<b>2,871,585</b>
<b>University Controlled</b>	<b>0</b>	<b>0</b>	<b>0</b>	<b>11,477</b>	<b>0</b>	<b>13,030</b>	<b>0</b>	<b>37,200</b>
<b>Total Net Assignable Space</b>	<b>6,113</b>	<b>117,508</b>	<b>161,926</b>	<b>12,433</b>	<b>727,999</b>	<b>50,056</b>	<b>6,063</b>	<b>2,908,785</b>
Building Support	0	0	196	0	0	219	1,215,902	1,217,432
<b>TOTAL</b>	<b>6,113</b>	<b>117,508</b>	<b>162,122</b>	<b>12,433</b>	<b>727,999</b>	<b>50,275</b>	<b>1,221,965</b>	<b>4,126,217</b>

**Total Leased Space in Square Footage by Major Division, College/Division, and A21 Utilization  
as of June 30, 2009**

	<b>Instruction and Department Research</b>	<b>Organized Research</b>	<b>Other Institutional Activity</b>	<b>Other Sponsored Projects</b>	<b>Operations and Maintenance of Plant</b>	<b>General Administration</b>	<b>Departmental Administration</b>
<b>President</b>	0	0	0	0	0	0	0
<b>VP General Counsel</b>	0	0	0	0	0	4,634	0
<b>VP Research</b>	0	0	0	0	0	0	0
<b>Provost</b>							
CIT	4,047	717	0	0	0	0	133
CFA	22,585	0	0	0	0	0	0
Heinz	8,006	0	0	0	0	0	880
H&SS	991	2,309	0	0	0	0	204
MCS	0	12,000	0	0	0	0	0
SCS	1,337	93,195	0	8,230	0	0	13,682
Tepper	10,820	0	0	0	0	0	0
SEI	0	125,441	0	0	0	0	0
Qatar	0	0	0	0	0	0	0
Other Provost	8,433	23,172	4,340	363	0	9,429	3,305
<b>Total</b>	<b>56,219</b>	<b>256,834</b>	<b>4,340</b>	<b>8,593</b>	<b>0</b>	<b>9,429</b>	<b>18,204</b>
<b>VP Finance</b>	0	0	0	0	0	0	0
<b>VP Campus Affairs</b>							
Campus Affairs Admin	0	0	0	0	0	0	0
Housing	0	0	0	0	0	0	0
Athletics	0	0	0	0	0	0	0
Other	0	0	0	0	0	0	0
<b>Total</b>	<b>0</b>	<b>0</b>	<b>0</b>	<b>0</b>	<b>0</b>	<b>0</b>	<b>0</b>
<b>VP Univ Advancement</b>	0	0	39,128	0	0	0	0
<b>Total University</b>	<b>56,220</b>	<b>256,834</b>	<b>43,468</b>	<b>8,593</b>	<b>0</b>	<b>14,063</b>	<b>18,205</b>
<b>University Controlled</b>	0	0	0	0	0	0	0
<b>Total Net Assignable Space</b>	<b>56,220</b>	<b>256,834</b>	<b>43,468</b>	<b>8,593</b>	<b>0</b>	<b>14,063</b>	<b>18,205</b>
Building Support	0	0	0	0	0	0	0
<b>TOTAL</b>	<b>56,220</b>	<b>256,834</b>	<b>43,468</b>	<b>8,593</b>	<b>0</b>	<b>14,063</b>	<b>18,205</b>

	Sponsored Projects Administration	Library	Student Services	Outside Agencies	Auxiliary Services	Unassigned	Non- Assignable	Total
<b>President</b>	0	0	0	0	0	0	0	0
<b>VP General Counsel</b>	0	0	0	0	0	0	0	4,634
<b>VP Research</b>	0	0	0	0	0	0	0	0
<b>Provost</b>								
CIT	0	0	0	72	0	64	0	5,033
CFA	0	0	0	0	0	0	0	22,585
Heinz	0	0	0	0	0	0	0	8,886
H&SS	0	0	0	0	0	0	0	3,505
MCS	0	0	0	0	0	0	0	12,000
SCS	0	0	0	0	0	0	0	116,445
Tepper	0	0	0	0	0	0	0	10,820
SEI	0	0	0	0	0	0	0	125,441
Qatar	0	0	0	0	0	0	0	0
Other Provost	0	0	0	0	0	580	0	49,621
<b>Total</b>	<b>0</b>	<b>0</b>	<b>0</b>	<b>72</b>	<b>0</b>	<b>644</b>	<b>0</b>	<b>354,336</b>
<b>VP Finance</b>	<b>0</b>	<b>0</b>	<b>0</b>	<b>0</b>	<b>0</b>	<b>0</b>	<b>0</b>	<b>0</b>
<b>VP Campus Affairs</b>								
Campus Affairs Admin	0	0	0	0	0	0	0	0
Housing	0	0	0	0	205,815	0	0	205,815
Athletics	0	0	1,875	0	0	0	0	1,875
Other	0	0	0	0	0	0	0	0
<b>Total</b>	<b>0</b>	<b>0</b>	<b>1,875</b>	<b>0</b>	<b>205,815</b>	<b>0</b>	<b>0</b>	<b>207,690</b>
<b>VP Univ Advancement</b>	<b>0</b>	<b>0</b>	<b>0</b>	<b>0</b>	<b>0</b>	<b>0</b>	<b>0</b>	<b>39,128</b>
<b>Total University</b>	<b>0</b>	<b>0</b>	<b>1,875</b>	<b>72</b>	<b>205,815</b>	<b>644</b>	<b>0</b>	<b>605,788</b>
<b>University Controlled</b>	0	0	0	1,622	0	0	0	1,622
<b>Total Net Assignable Space</b>	<b>0</b>	<b>0</b>	<b>1,875</b>	<b>1,694</b>	<b>205,815</b>	<b>644</b>	<b>0</b>	<b>607,410</b>
Building Support	0	0	0	0	0	0	21,178	21,178
<b>TOTAL</b>	<b>0</b>	<b>0</b>	<b>1,875</b>	<b>1,694</b>	<b>205,815</b>	<b>644</b>	<b>21,178</b>	<b>628,588</b>

**Total Space in Square Footage by Major Division, College/Division, and Building  
as of June 30, 2009**

	300 S. Craig	407-409 S. Craig	4615 Forbes Ave	4616 Henry St	Alumni House	Baker/ Porter	Bramer	College of Fine Arts	Cyert	Doherty	FMS Bldg	Gesling Field	GSIA	Gym
<b>President</b>	0	0	0	0	0	109	0	0	0	0	0	0	0	0
<b>VP General Counsel</b>	0	0	0	0	0	0	0	0	290	0	884	0	0	0
<b>VP Research</b>	0	0	3,100	0	0	0	0	0	69	0	0	0	0	0
<b>Provost</b>														
CIT	0	0	0	15,003	0	44,591	0	0	1,456	67,232	0	0	0	0
CFA	0	0	0	0	0	5,249	0	82,596	0	29,412	0	0	0	3,177
Heinz	204	0	0	0	0	0	0	0	0	0	0	0	0	0
H&SS	696	0	0	0	0	112,413	0	0	0	0	6,303	0	0	0
MCS	22,383	0	0	0	0	0	0	0	0	55,634	1,323	0	0	0
SCS	17,143	8,357	0	0	0	0	0	0	96	2,868	724	0	0	0
Tepper	209	0	0	0	0	0	0	0	0	0	0	0	76,846	0
SEI	0	0	0	0	0	0	0	0	0	0	0	0	0	0
Qatar	0	0	0	0	0	485	0	0	612	0	0	0	264	0
Other Provost	1,134	225	4,733	1,545	294	4,472	3,031	2,624	38,696	1,111	587	1,721	138	57
<b>Total</b>	<b>41,769</b>	<b>8,582</b>	<b>4,733</b>	<b>16,548</b>	<b>294</b>	<b>167,210</b>	<b>3,031</b>	<b>85,220</b>	<b>40,860</b>	<b>156,257</b>	<b>8,937</b>	<b>1,721</b>	<b>77,248</b>	<b>3,234</b>
<b>VP Finance</b>	<b>0</b>	<b>0</b>	<b>0</b>	<b>0</b>	<b>0</b>	<b>0</b>	<b>0</b>	<b>0</b>	<b>275</b>	<b>0</b>	<b>0</b>	<b>0</b>	<b>0</b>	<b>0</b>
<b>VP Campus Affairs</b>														
Campus Affairs Admin	0	0	0	0	0	23,241	0	2,378	92	11,745	0	0	0	0
Housing	0	0	0	0	0	0	0	0	0	0	0	0	0	0
Athletics	0	0	0	0	0	0	0	0	0	0	0	3,442	0	51,857
Other	5,714	225	8,139	3,518	0	1,232	225	888	241	0	22,488	5,642	1,317	57
<b>Total</b>	<b>5,714</b>	<b>225</b>	<b>8,139</b>	<b>3,518</b>	<b>0</b>	<b>24,473</b>	<b>225</b>	<b>3,266</b>	<b>333</b>	<b>11,745</b>	<b>22,488</b>	<b>9,084</b>	<b>1,317</b>	<b>51,914</b>
<b>VP Univ Advancement</b>	<b>0</b>	<b>0</b>	<b>0</b>	<b>0</b>	<b>6,207</b>	<b>0</b>	<b>665</b>	<b>0</b>	<b>0</b>	<b>0</b>	<b>0</b>	<b>0</b>	<b>0</b>	<b>0</b>
<b>Total University</b>	<b>47,483</b>	<b>8,807</b>	<b>15,972</b>	<b>20,065</b>	<b>6,501</b>	<b>191,791</b>	<b>3,921</b>	<b>88,486</b>	<b>41,827</b>	<b>168,001</b>	<b>32,309</b>	<b>10,805</b>	<b>78,565</b>	<b>55,148</b>
<b>University Controlled</b>	<b>0</b>	<b>0</b>	<b>4,825</b>	<b>0</b>	<b>0</b>	<b>0</b>	<b>0</b>	<b>0</b>	<b>570</b>	<b>320</b>	<b>0</b>	<b>0</b>	<b>0</b>	<b>0</b>
<b>Total Net Assignable Space</b>	<b>47,483</b>	<b>8,807</b>	<b>20,797</b>	<b>20,065</b>	<b>6,501</b>	<b>191,791</b>	<b>3,921</b>	<b>88,486</b>	<b>42,397</b>	<b>168,321</b>	<b>32,309</b>	<b>10,805</b>	<b>78,565</b>	<b>55,148</b>
Building Support	35,197	2,851	0	5,196	1,736	71,089	801	36,229	22,067	96,845	15,253	6,125	46,454	8,159
<b>TOTAL</b>	<b>82,680</b>	<b>11,658</b>	<b>20,797</b>	<b>25,261</b>	<b>8,237</b>	<b>262,880</b>	<b>4,722</b>	<b>124,715</b>	<b>64,464</b>	<b>265,166</b>	<b>47,562</b>	<b>16,930</b>	<b>125,019</b>	<b>63,307</b>

	Ham- burg	Hamer- schlag	Hunt Library	Margaret Morrison	Mellon Institute	Newell- Simon	Penn Ave	Pgh. Tech. Center	Posner Center	Purnell	Roberts Eng.	Scaife	SEI	Smith
<b>President</b>	0	0	0	0	0	0	0	0	7,288	0	0	0	0	0
<b>VP General Counsel</b>	0	0	0	0	1,809	0	0	0	0	0	0	0	0	0
<b>VP Research</b>	163	0	0	0	0	0	0	0	0	0	0	0	0	0
<b>Provost</b>														
CIT	21,671	73,697	0	0	779	0	0	14,668	0	0	34,864	20,393	0	2,466
CFA	0	0	0	61,764	0	0	0	0	0	62,901	0	0	0	0
Heinz	43,492	0	0	0	0	0	0	0	0	0	0	0	0	0
H&SS	0	0	0	9,828	12,505	0	0	0	0	0	0	0	0	0
MCS	0	0	0	0	171,417	0	0	4,362	0	0	0	0	0	0
SCS	77	1,411	0	0	0	98,326	0	0	0	0	0	0	0	12,690
Tepper	0	0	0	0	0	0	0	0	0	0	0	0	0	0
SEI	0	0	0	0	0	0	0	0	0	0	0	0	95,016	0
Qatar	7	0	0	0	0	182	0	0	0	0	0	0	0	0
Other Provost	70	79	79,608	87	14,272	0	34,554	26,951	942	479	408	153	107	0
<b>Total</b>	<b>65,317</b>	<b>75,187</b>	<b>79,608</b>	<b>71,679</b>	<b>198,973</b>	<b>98,508</b>	<b>34,554</b>	<b>45,981</b>	<b>942</b>	<b>63,380</b>	<b>35,272</b>	<b>20,546</b>	<b>95,123</b>	<b>15,156</b>
<b>VP Finance</b>	<b>0</b>	<b>0</b>	<b>0</b>	<b>0</b>	<b>0</b>	<b>0</b>	<b>0</b>	<b>0</b>	<b>0</b>	<b>0</b>	<b>0</b>	<b>0</b>	<b>0</b>	<b>0</b>
<b>VP Campus Affairs</b>														
Campus Affairs Admin	4,733	1,783	0	2,882	530	0	0	0	0	0	0	5,118	0	0
Housing	0	0	0	0	0	0	414	0	0	0	0	0	0	0
Athletics	0	0	0	0	0	0	0	0	0	0	0	0	0	0
Other	1,141	702	858	347	5,831	1,301	61,877	209	0	154	0	0	0	0
<b>Total</b>	<b>5,874</b>	<b>2,485</b>	<b>858</b>	<b>3,229</b>	<b>6,361</b>	<b>1,301</b>	<b>62,291</b>	<b>209</b>	<b>0</b>	<b>154</b>	<b>0</b>	<b>5,118</b>	<b>0</b>	<b>0</b>
<b>VP Univ Advancement</b>	<b>0</b>	<b>0</b>	<b>0</b>	<b>0</b>	<b>0</b>	<b>0</b>	<b>0</b>	<b>0</b>	<b>0</b>	<b>0</b>	<b>0</b>	<b>0</b>	<b>0</b>	<b>0</b>
<b>Total University</b>	<b>71,353</b>	<b>77,671</b>	<b>80,466</b>	<b>74,908</b>	<b>207,143</b>	<b>99,808</b>	<b>96,845</b>	<b>46,190</b>	<b>8,230</b>	<b>63,533</b>	<b>35,271</b>	<b>25,663</b>	<b>95,123</b>	<b>15,156</b>
<b>University Controlled</b>	0	0	0	193	1,761	0	7,361	2,849	0	0	2,014	0	0	0
<b>Total Net Assignable Space</b>	<b>71,353</b>	<b>77,671</b>	<b>80,466</b>	<b>75,101</b>	<b>208,904</b>	<b>99,808</b>	<b>104,206</b>	<b>49,039</b>	<b>8,230</b>	<b>63,533</b>	<b>37,285</b>	<b>25,663</b>	<b>95,123</b>	<b>15,156</b>
Building Support	31,157	39,517	19,720	33,817	147,574	53,934	4,409	31,570	1,407	41,756	27,571	11,251	33,837	6,040
<b>TOTAL</b>	<b>102,510</b>	<b>117,188</b>	<b>100,186</b>	<b>108,918</b>	<b>356,478</b>	<b>153,742</b>	<b>108,615</b>	<b>80,609</b>	<b>9,637</b>	<b>105,289</b>	<b>64,856</b>	<b>36,914</b>	<b>128,960</b>	<b>21,196</b>

	Univ. Center	UTDC	Warner	Wean	Whit- field	Housing	Other	CIC Leased	NREC Leased	SEI Leased	Housing Leased	Other Leased	Univ. Total
<b>President</b>	0	98	3,425	0	0	0	0	0	0	0	0	0	10,920
<b>VP General Counsel</b>	622	701	1,220	51	8,468	0	10,668	0	0	0	0	4,634	29,347
<b>VP Research</b>	0	0	2,256	0	0	0	0	0	0	0	0	0	5,588
<b>Provost</b>													
CIT	0	0	0	27,873	0	0	0	4,538	0	0	0	495	329,726
CFA	0	0	0	1,454	0	0	629	0	0	0	0	22,585	269,767
Heinz	0	508	0	0	0	0	0	0	0	0	0	8,886	53,091
H&SS	0	0	0	565	0	0	0	0	0	0	0	3,505	145,815
MCS	0	0	0	48,825	0	0	0	0	0	0	0	12,000	315,944
SCS	0	0	0	71,884	0	0	0	1,886	74,102	0	0	40,457	330,020
Tepper	0	0	0	0	0	0	0	0	0	0	0	10,820	87,874
SEI	0	0	0	0	0	0	0	41,379	0	23,746	0	60,316	220,456
Qatar	0	2,734	0	204	0	0	0	0	0	0	0	0	4,488
Other Provost	561	546	11,629	22,880	72	0	5,803	22,859	0	0	0	26,762	309,189
<b>Total</b>	<b>561</b>	<b>3,788</b>	<b>11,629</b>	<b>173,685</b>	<b>72</b>	<b>0</b>	<b>6,432</b>	<b>70,662</b>	<b>74,102</b>	<b>23,746</b>	<b>0</b>	<b>185,826</b>	<b>2,066,370</b>
<b>VP Finance</b>	<b>0</b>	<b>21,442</b>	<b>670</b>	<b>0</b>	<b>0</b>	<b>0</b>	<b>0</b>	<b>0</b>	<b>0</b>	<b>0</b>	<b>0</b>	<b>0</b>	<b>22,387</b>
<b>VP Campus Affairs</b>													
Campus Affairs Admin	0	0	6,740	8,363	0	0	0	0	0	0	0	0	67,605
Housing	0	0	0	0	0	517,590	18,304	0	0	0	205,815	0	742,123
Athletics	45,471	0	0	0	0	0	12,891	0	0	0	0	1,875	115,537
Other	92,049	1,018	5,845	2,698	0	98,160	46,143	0	0	0	0	0	368,016
<b>Total</b>	<b>137,520</b>	<b>1,018</b>	<b>12,585</b>	<b>11,061</b>	<b>0</b>	<b>615,750</b>	<b>77,338</b>	<b>0</b>	<b>0</b>	<b>0</b>	<b>205,815</b>	<b>1,875</b>	<b>1,293,281</b>
<b>VP Univ Advancement</b>	<b>0</b>	<b>0</b>	<b>3,478</b>	<b>0</b>	<b>0</b>	<b>0</b>	<b>0</b>	<b>0</b>	<b>0</b>	<b>0</b>	<b>0</b>	<b>39,128</b>	<b>49,478</b>
<b>Total University</b>	<b>138,702</b>	<b>27,047</b>	<b>35,265</b>	<b>184,798</b>	<b>8,540</b>	<b>615,750</b>	<b>94,439</b>	<b>70,662</b>	<b>74,102</b>	<b>23,746</b>	<b>205,815</b>	<b>231,463</b>	<b>3,477,373</b>
<b>University Controlled</b>	611	0	0	0	0	4,835	11,862	0	0	0	0	1,622	38,822
<b>Total Net Assignable Space</b>	<b>139,313</b>	<b>27,047</b>	<b>35,265</b>	<b>184,798</b>	<b>8,540</b>	<b>620,585</b>	<b>106,301</b>	<b>70,662</b>	<b>74,102</b>	<b>23,746</b>	<b>205,815</b>	<b>233,085</b>	<b>3,516,195</b>
Building Support	74,889	7,603	10,680	109,814	3,808	0	179,078	0	16,809	0	0	4,369	1,238,610
<b>TOTAL</b>	<b>214,202</b>	<b>34,650</b>	<b>45,945</b>	<b>294,612</b>	<b>12,348</b>	<b>620,585</b>	<b>285,379</b>	<b>70,662</b>	<b>90,911</b>	<b>23,746</b>	<b>205,815</b>	<b>237,454</b>	<b>4,754,805</b>



**Federal Legal Requirements - The Clery Act**

The Clery Act requires colleges and universities to:

- Publish an annual report every year by October 1 that contains three years of campus crime statistics and certain campus security policy statements
- Disclose crime statistics for the campus, public areas immediately adjacent to or running through the campus, and certain non-campus facilities. The statistics must be gathered from campus police or security, local law enforcement, and other university officials who have "significant responsibility for student and campus activities"
- Provide "timely warning" notices of those crimes that have occurred and pose an ongoing "threat to students and employees."
- Disclose in a public crime log "any crime that occurred on campus or within the patrol jurisdiction of the campus police or the campus security department and is reported to the campus police or security department."

**Campus Security Reports**

<b>Criminal Offenses, Pittsburgh Campus</b>	<b>2006</b>	<b>2007</b>	<b>2008</b>
Murder	0	0	0
Negligent Manslaughter	0	0	0
Robbery	6	2	2
Aggravated Assault	2	0	1
Motor Vehicle Theft	0	2	0
Arson	1	0	0
Burglary	29	34	25
Sex Offenses, Forcible <sup>1</sup>	4	4	5
Sex Offenses, Non-forcible	0	0	0
Liquor Law Arrests	26	21	34
Liquor Law Disciplinary Actions	131	117	82
Drug Law Arrests	0	2	4
Drug Law Disciplinary Actions	12	9	8
Illegal Weapon Arrests	0	0	0
Illegal Weapons Disciplinary Actions	0	5	4

**Services of the University Police include:**

- |                              |   |
|------------------------------|---|
| Criminal investigations      | Escort and shuttle services             |
| Emergency response           | Event security                          |
| Crime and safety alerts      | Lost and found                          |
| Crime prevention education   | Rape aggression defense systems courses |
| Bike and laptop registration | Vehicle, bicycle, and foot patrols      |
| Emergency response           |   |

1. One sex offense reported in 2007 allegedly occurred in 2005 and one sex offense reported in 2006 allegedly occurred in 2003

**Parking Capacity  
Fiscal Years 2007 to 2010**

www.cmu.edu/parking

	<u>2007</u>	<u>2008</u>	<u>2009</u>	<u>2010</u>
Permit Parking	2,743	2,694	2,624	2,876
Visitor Parking	272	272	272	272
Meter Parking	46	46	46	46
Utility Parking	28	28	28	28
Campus Street	301	301	301	301
<b>Carnegie Mellon Area Total</b>	<b>3,390</b>	<b>3,341</b>	<b>3,271</b>	<b>3,523</b>

**Permit Parking Capacity by Lot  
Fiscal Years 2007 to 2010**

	<u>2007</u>	<u>2008</u>	<u>2009</u>	<u>2010</u>
300 S. Craig	18	15	15	15
6555 Penn Avenue	46	40	40	40
Alumni House	17	17	17	17
Bramer House	5	8	8	8
Children's School	15	15	15	15
Collaborative Innovation Center	91	66	66	66
College of Fine Arts	60	60	60	60
Dithridge Street Garage	350	350	350	350
Doherty Hall	120	120	120	120
East Campus Garage	686	770	770	770
Fraternities	75	75	75	75
Frew Street	9	9	9	9
Gates Garage	0	0	0	150
GATF - Filmore	0	0	0	72
Hamburg Hall	53	25	25	25
Henry Street	9	9	9	9
Junction Hollow	9	0	0	0
Margaret Morrison Street	15	0	0	0
Morewood	868	868	798	798
Pittsburgh Technology Center	141	91	91	91
Porter-Hamerschlag-Wean	60	60	60	60
Sororities	25	25	25	25
Warner	10	10	10	10
West Campus	11	11	11	11
Whitfield Hall	50	50	50	50
Zebina Way	0	0	0	30
<b>Carnegie Mellon Permit Parking Spaces Total</b>	<b>2,743</b>	<b>2,694</b>	<b>2,624</b>	<b>2,876</b>

**Permit Assignments by Relationship  
Fiscal Years 2007 to 2010**

	<u>2007</u>	<u>2008</u>	<u>2009</u>	<u>2010</u>
Faculty and Staff	2,779	2,251	2,000	2,025
Students	137	416	140	305
Non-Carnegie Mellon	10	10	10	28
<b>Total Permits Issued</b>	<b>2,926</b>	<b>2,677</b>	<b>2,150</b>	<b>2,358</b>

**ACADEMIC/ADMINISTRATIVE**

- 1 Alumni House
- 2a Baker Hall (H&SS)
- 2b Porter Hall
- 3 Brainer House
- 4 Collaborative Innovation Center (CIC)
- 5 College of Fine Arts (CFA)
- 6 Cyert Hall
- 7 Doherty Hall
- 8 Facilities Management Services Building
- 9A Gates Center for Computer Science (SCS)
- 9a Hillman Center for Future-Generation Technologies (SCS)
- 10 Hamburg Hall (Heinz)
- 11 Hamerschlag Hall

**RESIDENTIAL**

- 12 Hunt Library
- 13 Margaret Morrison Carnegie Hall
- 14 Mellon Institute (MCS)
- 15 Newell-Simon Hall (SCS)
- 16 Pittsburgh Technology Center\* (ETC)
- 17 Posner Center
- 18 Posner Hall (Tepper)
- 19 Purnell Center for the Arts
- 20 Rand Building
- 21 Roberts Engineering Hall
- 22 Robotics Engineering Consortium\* (NREC)
- 23 Scaife Hall (CIT)
- 24 Skibo Gymnasium
- 25 Smith Hall
- 26 Software Engineering Institute (SEI)
- 27 Solar Decathlon House
- 28 University Center
- 29 Warner Hall (Office of Admission)
- 30 Wean Hall
- 31 Whitfield Hall (HR)
- 32 300 South Craig (Police)
- 33 311 South Craig
- 34 407 South Craig
- 35 4516 Henry (JTDC)
- 36 4609 Henry (H&SS Grad Labs)
- 37 4615 Forbes
- 38 4616 Henry (INI)
- 39 6555 Penn\*
- 40 Boss House
- 41 Cathedral Mansions
- 42 Doherty Apartments
- 43 Donner House
- 44 Fairfax Apartments
- 45 Fraternity Quadrangle
- 46 Hamerschlag House
- 47 Henderson House
- 48 London Terrace Apartments
- 49 Margaret Morrison Apartments/Plaza
- 50 Margaret Morrison Sorority Houses
- 51 McGill House
- 52 Morewood Gardens (Housing Offices)
- 53 Mudge House
- 54 Resnik House & Tartans Pavilion
- 55 Roselawn Houses
- 56 Scabell House
- 57 Shady Oak Apartments
- 58 Shirley Apartments
- 59 Spirit House
- 60 Stever House
- 61 Tech House
- 62 Veronica Apartments
- 63 Webster Hall
- 64 Welch House
- 65 West Wing
- 66 Woodlawn Apartments
- 67 99 Gladstone
- 68 1094 Devon

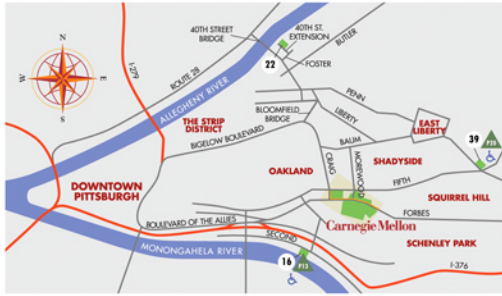
**PARKING**

- P1 Alumni House\*\*\*
- P2 Brainer House\*\*\*
- P3 Children's School
- P4 CIC Garage\*\*|\*\*\*\*
- P5 Dithridge Street Garage\*\*
- P6 Doherty Apartments\*\*\*
- P7 East Campus Garage\*\*|\*\*\*\*
- P8 Fine Arts
- P9 Fraternities
- P10 Hamburg Hall\*\*\*
- P11 Junction Hollow
- P12 Morewood\*\*\*|\*\*\*\*
- P13 Pittsburgh Technology Center\* [ETC]
- P14 Porter-Hamerschlag-Wean
- P15 Purnell Center - closed for construction
- P16 Sororities
- P17 Warner
- P18 West Campus
- P19 Whitfield Hall
- P20 6555 Penn\*

- \* Off campus, see inset
- \*\* Open to visitors 9 a.m.-5 p.m. Monday - Friday
- \*\*\* Open to visitors after 5 p.m. and weekends
- \*\*\*\* City parking meters

Additional on-street parking available on city streets.  
Primary circulation routes and access parking areas are shown.

Revised September 2009



- Academic/Administrative Buildings
- ? Information Desk
- Walkways
- ◆ Residential Buildings
- ♿ Accessible Parking
- 👮 University Police
- ▲ Parking
- 🚌 Bus Stop
- 🍴 Dining
- 🏥 Health Services

# Campus Map

**Carnegie Mellon** [www.cmu.edu](http://www.cmu.edu)