

SPACE AND FACILITIES

Table of Contents

Space and Facilities

Introduction	7.1
Total Space in Square Footage by Major Division, College/Division, as of June 30, 2006:	
by Use Category	7.3
by Building	7.4
by A21 Utilization	7.7
Net Assignable Space by Major Use & Division, as of June 30, 2006	7.9
Parking Capacity, Fiscal Years 2005 to 2007	7.11
Permit Parking Capacity by Lot, Fiscal Year 2007	7.11
Permit Assignments by Relationship, Fiscal Year 2007	7.11
Current Campus Map 2006	7.12

SPACE AND FACILITIES

Source Data:

The data used for the Space and Facilities section of this book comes from the Property Accounting Services Department Master University Space Database. Data is as of June 30, 2006. **Parking data** is provided by Parking and Transportation Services and the **Campus Map** is provided by Facilities Management Services.

Definitions - Use Categories:

Classroom Facilities: General purpose classrooms, lecture halls, recitation rooms, seminar rooms and other rooms used primarily for scheduled non-laboratory instruction

General Use Facilities: Comprise a campus general service or functional support system (assembly, exhibition, dining, relaxation, merchandising, recreation, general meetings, and day care)

Laboratory Facilities: Rooms characterized by special purpose equipment or a specific configuration that ties instructional or research activities to a particular discipline or a closely related group of disciplines

Office Facilities: Offices and conference rooms specifically assigned to each of the various academic, administrative and service functions

Other: Includes health care facilities (rooms used to provide patient care that is located in separately organized health care facilities), unclassified areas (assignable areas that are inactive or unassigned; in the process of being altered, renovated, or converted), and non-assignable areas (areas of a building that are used to support the overall activities in that building - e.g., elevators, stairs, custodial closets, circulation and mechanical areas)

Residential Facilities: Housing facilities for students, faculty, staff, and outside visitors to campus

Leased: All facilities that the university leases

Special Use Facilities: Rooms that are sufficiently specialized in their primary activity or function to merit a unique room code. Areas and rooms for military training, athletic activity, media production, clinical activities (outside of separately organized health care facilities), demonstration, agricultural field activities, and animal and plant shelters are included here.

Study Facilities: Study rooms, open stack reading rooms, and library processing rooms

Support Facilities: These rooms provide centralized space for auxiliary support systems, which help keep all institutional programs and activities operational. Included in these areas are computer-based processing and telecommunications, shop services, general storage and supply, vehicle storage, central services (e.g. printing and duplicating, mail, shipping and receiving, environmental testing or monitoring, laundry, or food supplies), and hazardous materials areas.

Definitions - A21 Utilization:

Auxiliary Services: The auxiliary function is to be used in connection with all expense transactions under the university as auxiliary organizations. An auxiliary is defined as a self-supporting operating unit whose primary purpose is to provide goods, services, or groups of services in support of the university's education and research mission. These units are responsible for recovering both the direct and indirect costs associated with their operations through established pricing practices.

Departmental Administration: Expenses that have been incurred for administrative and supporting services that benefit common or joint departmental activities or objectives in academic units, dean's offices, academic departments and divisions, and organized research units

General Administration: Expenses incurred for the central administrative offices of the President, Legal Counsel, Accounting, Payroll, etc. and other expenses of a general character which do not relate solely to any major function of the institution but effect the total institution (e.g., various general institutional accounts: audit fees, legal fees, etc.)

Instruction and Department Research: The teaching and training activities of an institution, whether they are offered for credits towards a degree or on a non-credit basis; whether they are offered through regular academic departments or separate divisions, such as summer school or an extension division. It also includes departmental research internally funded by restricted gifts, and university or departmental funds, if not separately budgeted and accounted for, sponsored research training grants are also considered to be instruction.

Library: Expenses that have been incurred in the operation of the library, including the cost of books and library materials purchased for the library. These expenses include the salaries and fringe benefits associated with the library.

Non-Assignable: Included should be space subdivisions (BOMA) of the three non-assignable room use categories (building service, circulation and mechanical) that are used to support the building's general operation

Operations & Maintenance of Plant: Expenses that have been incurred by a central service organization or at the departmental level for the administration, supervision, operation, maintenance, preservation and protection of the institution's physical plant/facilities

Organized Research: Space used in conducting research and development activities FUNDED BY THIRD PARTIES, including activity supported by university cost sharing specifically identified to those contracts and grants. Sponsored research excludes community service programs, seminars, symposiums, etc., which are considered Other Sponsored Projects.

Other Institutional Activity: All activities within the institution except OR, IDR or OSP. This type of space typically includes auxiliary services, development and university relations and their associated storage and support. This category covers departments that do not support the instructional and research mission of the university and housing.

Other Sponsored Projects: Space used in conducting activities that are SPONSORED BY THIRD PARTIES (either Federal or non-Federal) including contract for service activities, community service programs, seminars, symposiums and conferences, etc. funded by third parties

Outside Agencies: Those activities that are controlled or operated by outside agencies but are housed or otherwise supported by the institution

Sponsored Projects Administration: Includes the costs of organizations established primarily to administer sponsored projects. This item would include the Office of Sponsored Research, Cost Analysis Department, Sponsored Projects Accounting, and some of the functions of the Provost's Office.

Student Services: Expenses that have been incurred for the administration of student affairs and for services to students

Unassigned: Space, which is in the planning stage, and has been taken off line or is being saved as surge space and is usually associated with the University Planning Department as University Controlled Space

**TOTAL SPACE IN SQUARE FOOTAGE
BY MAJOR DIVISION, COLLEGE/DIVISION & USE CATEGORY
as of June 30, 2006**

	Use Category										TOTAL
	Classroom Facilities	Laboratory Facilities	Office Facilities	Study Facilities	Special Use Facilities	General Use Facilities	Support Facilities	Residential Facilities	Other	Leased ¹	
President	0	0	12,526	0	0	186	53	0	0	0	12,765
VP General Counsel	0	0	7,398	150	0	14,955	4,579	0	0	0	27,081
Provost											
CIT	2,895	143,145	145,085	3,479	0	7,141	11,636	0	60	495	313,937
CFA	35,755	117,524	47,601	1,858	191	36,776	14,280	0	2,670	25,829	282,484
Heinz	1,513	656	33,948	3,833	56	3,444	848	0	314	5,211	49,822
H&SS	2,427	23,697	105,555	1,966	246	2,332	840	0	62	1,612	138,735
MCS	9,195	159,560	93,593	3,667	2,330	10,713	14,273	0	1,095	12,000	306,426
SCS	8,696	52,813	122,438	380	0	5,467	13,162	0	0	92,351	295,307
Tepper	13,958	2,668	47,998	2,269	0	8,538	2,223	0	62	7,770	85,486
SEI	0	0	117,368	2,034	3,037	6,177	11,211	0	0	38,330	178,157
Other Provost	9,293	23,866	101,938	103,293	818	9,387	62,996	0	782	22,531	334,904
Total	83,732	523,929	815,524	122,779	6,678	89,975	131,469	0	5,045	206,129	1,985,258
VP Finance	0	0	27,729	3,632	1,489	10,401	60,034	0	371	0	103,656
VP Enrollment											
Enrollment Services Admin	61,773	0	6,652	0	0	1,467	269	0	0	0	70,162
Housing	0	0	3,508	1,573	0	9,506	11,589	509,502	1,770	225,132	762,581
Athletics	1,600	0	4,690	0	105,879	953	2,658	0	0	1,875	117,656
Other	0	0	34,449	1,500	5,155	81,295	19,400	95,845	9,806	9,560	257,010
Total	63,373	0	49,299	3,073	111,034	93,221	33,916	605,347	11,576	236,567	1,207,409
VP Univ Advancement	253	0	12,283	0	0	0	2,996	0	0	32,299	47,831
Total University	147,358	523,929	924,759	129,634	119,201	208,738	233,047	605,347	16,992	474,995	3,384,000
University Controlled	4,881	6,617	45,007	224	13,501	2,285	6,480	0	14,440	4,973	98,409
Total Net Assignable Space	152,239	530,546	969,766	129,858	132,702	211,023	239,527	605,347	31,432	479,968	3,482,409
Building Support	0	0	0	0	0	0	0	0	1,239,677	18,684	1,258,361
TOTAL	152,241	530,547	969,767	129,859	132,701	211,022	239,527	605,346	1,271,108	498,651	4,740,770

1. The National Robotics Engineering Consortium (NREC) Building is not included in the leased use category, but is counted with Carnegie Mellon Buildings within the category, within this table.

**TOTAL SPACE IN SQUARE FOOTAGE
BY MAJOR DIVISION, COLLEGE/DIVISION & BUILDING
as of June 30, 2006**

	Building														
	300 S. Craig	407-409 S. Craig	4616 Henry St	4902 Forbes Ave	Alumni House	Baker/Porter	Bramer	College of Fine Arts	Cyert	Doherty	FMS Bldg	Gesling Field	GSIA	Gym	
President	0	0	0	0	0	109	0	0	0	0	0	0	0	0	
VP General Counsel	0	0	0	271	0	0	0	0	290	0	0	0	0	0	
Provost															
CIT	0	0	13,856	0	0	42,521	0	0	1,456	52,760	0	0	0	0	
CFA	0	0	0	2,927	0	5,298	0	82,476	0	33,161	0	0	0	1,600	
Heinz	75	0	0	0	0	0	0	0	0	0	0	0	0	0	
H&SS	69	0	0	2,394	0	109,442	0	0	0	0	2,319	0	0	0	
MCS	5,651	0	0	0	0	0	0	0	0	67,538	1,323	0	0	0	
SCS	4,309	8,357	0	0	0	0	0	0	96	3,020	0	0	0	0	
Tepper	69	0	0	0	0	0	0	0	0	0	0	0	77,647	0	
SEI	0	0	0	0	0	68	0	0	0	0	0	0	0	0	
Other Provost	276	225	2,780	2,007	294	4,847	2,580	2,624	35,117	591	24,747	1,721	138	59	
Total	10,449	8,582	16,636	7,328	294	162,176	2,580	85,100	36,669	157,070	28,389	1,721	77,785	1,659	
VP Finance	0	0	0	371	0	0	0	0	275	0	125	0	963	0	
VP Enrollment															
Enrollment Services Admin	0	0	0	1,762	0	23,246	0	2,378	92	11,896	0	0	0	0	
Housing	0	0	0	0	0	0	0	0	0	0	0	0	0	0	
Athletics	0	0	0	0	0	0	0	0	0	0	0	3,442	0	53,888	
Other VP Enrollment	5,668	225	0	3,727	0	1,031	0	888	1,347	300	75	5,642	404	79	
Total	5,668	225	0	5,489	0	24,277	0	3,266	1,439	12,196	75	9,084	404	53,967	
VP Univ Advancement	0	0	0	559	6,207	0	1,116	0	0	0	0	0	0	0	
Total University	16,117	8,807	16,636	14,018	6,501	186,562	3,696	88,366	38,673	169,266	28,589	10,805	79,152	55,626	
University Controlled	34,643	0	3,518	14,979	0	0	0	0	4,055	1,253	1,404	0	0	0	
Total Net Assignable Space	50,760	8,807	20,154	28,997	6,501	186,562	3,696	88,366	42,728	170,519	29,993	10,805	79,152	55,626	
Building Support	35,051	2,854	5,293	7,673	1,736	71,620	801	36,602	21,732	87,140	13,776	9,962	52,891	7,936	
TOTAL	85,810	11,661	25,448	36,668	8,237	258,182	4,497	124,968	64,461	257,660	43,769	20,766	132,043	63,561	

Building

	Hamburg	Hamer- schlag	Hunt Library	M. Morrison	Mellon Institute	Newell- Simon	Penn Ave	Pgh. Tech. Center	Planetary Robotics	Posner Center	Publica- tions & Printing	Purnell	Roberts Eng.	Scaife
President	0	0	0	0	0	0	0	0	0	7,288	0	0	0	0
VP General Counsel	0	0	0	0	0	0	0	0	0	0	0	0	0	0
Provost														
CIT	21,447	73,053	0	0	39	0	0	17,026	0	0	0	0	35,844	20,407
CFA	0	0	0	66,639	0	0	0	0	0	0	0	62,894	0	0
Heinz	43,729	0	0	0	0	0	0	0	0	0	0	0	0	0
H&SS	0	0	0	9,828	12,505	0	0	0	0	0	0	0	0	0
MCS	0	461	0	0	169,028	0	0	1,305	150	0	0	0	0	0
SCS	0	1,411	0	0	0	94,943	0	0	4,733	0	0	0	0	0
Tepper	0	0	0	0	0	0	0	0	0	0	0	0	0	0
SEI	0	0	0	0	0	0	0	0	0	0	0	0	0	0
Other Provost	232	79	82,771	0	18,779	95	34,473	29,786	0	942	0	479	408	153
Total	65,408	75,004	82,771	76,467	200,351	95,038	34,473	48,117	4,883	942	0	63,373	36,252	20,560
VP Finance	0	0	0	0	3,363	0	59,046	0	0	0	4,850	0	0	0
VP Enrollment														
Enrollment Services Admin	4,945	1,783	0	2,927	1,575	0	0	0	0	0	0	0	0	5,118
Housing	0	0	0	0	0	0	0	0	0	0	0	0	0	0
Athletics	0	0	0	0	0	0	0	0	0	0	0	0	0	0
Other VP Enrollment	1,171	722	0	1,620	828	1,301	0	209	0	0	8	154	0	20
Total	6,116	2,505	0	4,547	2,403	1,301	0	209	0	0	8	154	0	5,138
VP Univ Advancement	0	0	903	0	0	0	0	0	0	0	2,091	0	0	0
Total University	71,524	77,509	83,674	81,014	206,117	96,339	93,519	48,326	4,883	8,230	6,949	63,527	36,252	25,698
University Controlled	0	235	0	193	1,978	0	10,434	1,597	1,628	0	2,316	0	2,014	0
Total Net Assignable Space	71,524	77,744	83,674	81,207	208,095	96,339	103,953	49,923	6,511	8,230	9,265	63,527	38,266	25,698
Building Support	34,310	49,442	15,336	35,415	144,777	57,540	4,698	31,671	348	1,407	1,054	41,756	28,437	11,280
TOTAL	105,835	127,186	99,010	116,623	352,872	153,879	108,652	81,593	6,858	9,637	10,318	105,283	66,702	36,978

Continued from page from 7.5

Building

	Smith	Univ. Center	UTDC	Warner	Wean	Whitfield	Housing Bldgs	Other	CIC Leased	NREC Leased	SEI Leased	Housing Leased	Other Leased	University Total
President	0	0	1,260	4,108	0	0	0	0	0	0	0	0	0	12,765
VP General Counsel	0	622	2,222	218	0	8,468	14,991	0	0	0	0	0	0	27,081
Provost														
CIT	2,466	0	0	0	28,461	0	0	904	3,200	0	0	0	495	313,937
CFA	0	0	0	0	876	0	0	784	0	0	0	0	25,829	282,484
Heinz	149	0	658	0	0	0	0	0	0	0	0	0	5,211	49,822
H&SS	0	0	0	0	565	0	0	0	0	0	0	0	1,612	138,735
MCS	0	0	0	0	48,970	0	0	0	0	0	0	0	12,000	306,426
SCS	12,513	0	0	0	73,193	0	0	0	384	76,902	0	0	15,449	295,307
Tepper	0	0	0	0	0	0	0	0	0	0	0	0	7,770	85,486
SEI	0	0	0	0	0	0	0	95,090	44,669	0	28,789	0	9,541	178,157
Other Provost	0	782	4,136	6,620	24,662	72	6,431	0	23,468	0	0	0	22,531	334,904
Total	15,128	782	4,794	6,620	176,727	72	6,431	96,778	71,721	76,902	28,789	0	100,438	1,985,258
VP Finance	0	15,131	17,920	641	205	0	326	440	0	0	0	0	0	103,656
VP Enrollment														
Enrollment Services Admin	0	0	0	6,751	7,689	0	0	0	0	0	0	0	0	70,162
Housing	0	0	0	0	0	0	537,449	0	0	0	0	225,132	0	762,581
Athletics	0	45,471	0	0	0	0	12,979	0	0	0	0	0	1,875	117,656
Other VP Enrollment	0	76,721	861	12,291	801	0	130,349	1,011	0	0	0	0	9,560	257,010
Total	0	122,192	861	19,042	8,490	0	680,777	1,011	0	0	0	225,132	11,435	1,207,409
VP Univ Advancement	0	0	0	4,657	0	0	0	0	0	0	0	0	32,299	47,831
Total University	15,128	138,727	27,057	35,286	185,422	8,540	702,525	98,229	71,721	76,902	28,789	225,132	144,172	3,384,000
University Controlled	0	611	0	0	0	0	0	12,579	0	0	0	0	4,973	98,409
Total Net Assignable Space	15,128	139,338	27,057	35,286	185,422	8,540	702,525	110,808	71,721	76,902	28,789	225,132	149,145	3,482,409
Building Support	6,048	74,905	7,603	10,809	111,781	3,808	173,506	38,678	0	14,373	0	0	4,311	1,258,361
TOTAL	21,176	214,242	34,661	46,095	297,204	12,348	876,030	149,486	71,720	91,275	28,789	225,132	153,455	4,740,770

**TOTAL SPACE IN SQUARE FOOTAGE
BY MAJOR DIVISION, COLLEGE/DIVISION & A21 UTILIZATION
as of June 30, 2006**

	A21 Utilization						
	Instruction & Dept Research	Organized Research	Other Institutional Activity	Other Sponsored Projects	Operations & Maintenance of Plant	General Administration	Departmental Administration
President	109	0	1,452	0	0	11,204	0
VP General Counsel	0	0	909	0	0	11,182	0
Provost							
CIT	107,949	152,326	3,222	2,746	0	360	39,555
CFA	236,220	6,487	10,379	3,029	0	0	22,719
Heinz	29,499	2,166	815	389	0	0	14,903
H&SS	83,165	37,070	1,056	241	0	0	14,078
MCS	121,992	147,115	2,575	3,741	0	0	20,565
SCS	52,745	201,279	682	2,309	0	0	26,407
Tepper	49,156	3,047	2,621	0	0	0	18,762
SEI	0	178,157	0	0	0	0	0
Other Provost	25,886	31,103	26,281	25,010	32,996	49,280	9,713
Total	706,612	758,750	47,631	37,465	32,996	49,640	166,702
VP Finance	2,046	0	7,299	0	51,005	21,259	0
VP Enrollment							
Enrollment Services Admin	32,250	0	914	0	0	0	0
Housing	36	0	0	0	0	0	0
Athletics	6,570	0	0	0	0	0	0
Other	1,195	0	35,292	0	5,809	21,627	0
Total	40,051	0	36,206	0	5,809	21,627	0
VP Univ Advancement	0	0	45,766	0	0	2,065	0
Total University	748,818	758,750	139,263	37,465	89,810	116,977	166,702
University Controlled	0	202	13,016	0	0	551	0
Total Net Assignable Space	748,818	758,952	152,279	37,465	89,810	117,528	166,702
Building Support	48	0	50	0	0	0	104
TOTAL	748,868	758,951	152,328	37,464	89,810	117,528	166,805

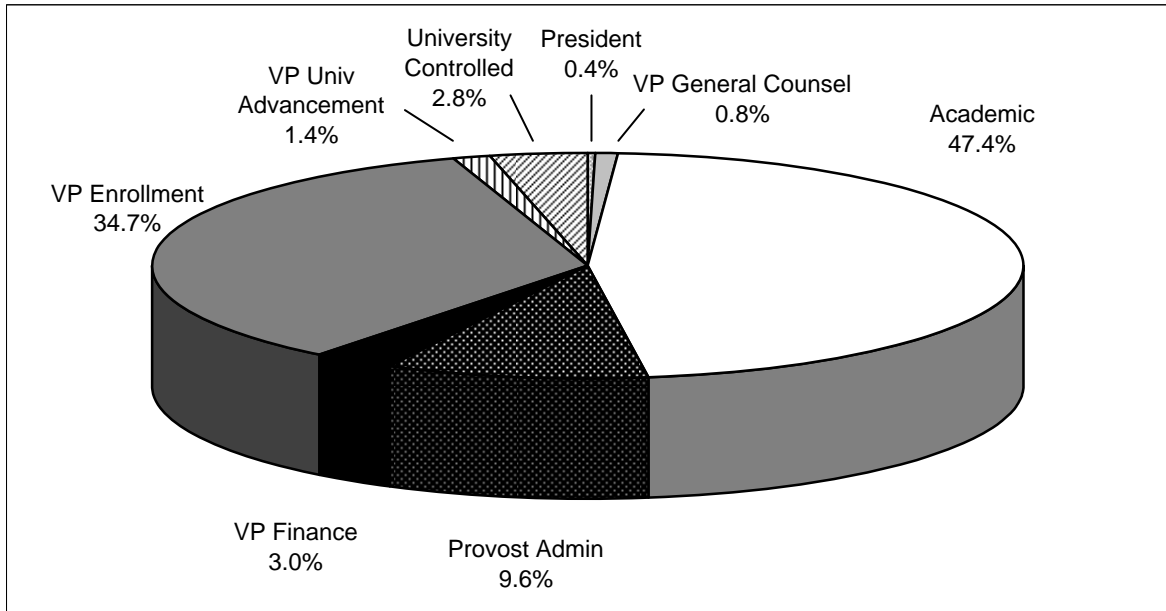
Continued from page 7.7

A21 Utilization

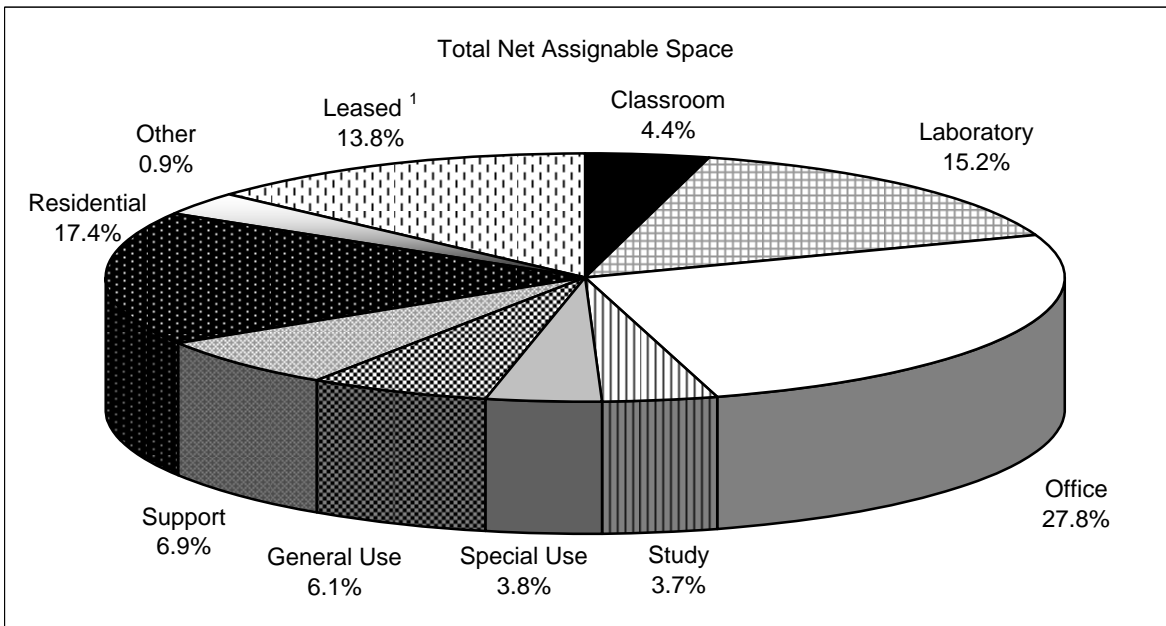
	Sponsored Projects Administration	Library	Student Services	Outside Agencies	Auxiliary Services	Unassigned	Non-Assignable	TOTAL
President	0	0	0	0	0	0	0	12,765
VP General Counsel	0	0	0	0	14,991	0	0	27,081
Provost								
CIT	0	0	184	119	0	7,476	0	313,937
CFA	0	0	517	0	0	3,134	0	282,484
Heinz	0	0	480	155	0	1,416	0	49,822
H&SS	0	0	2,397	0	0	728	0	138,735
MCS	0	0	0	587	0	9,851	0	306,426
SCS	0	0	346	0	0	11,539	0	295,307
Tepper	0	0	11,642	0	0	258	0	85,486
SEI	0	0	0	0	0	0	0	178,157
Other Provost	2,153	121,485	2,379	0	4,085	4,533	0	334,904
Total	2,153	121,485	17,945	861	4,085	38,935	0	1,985,258
VP Finance	3,796	0	0	0	18,252	0	0	103,656
VP Enrollment								
Enrollment Services Admin	0	0	36,997	0	0	0	0	70,162
Housing	0	0	0	0	762,544	0	0	762,581
Athletics	0	0	108,880	0	752	1,454	0	117,656
Other	0	0	37,324	0	149,968	128	5,667	257,010
Total	0	0	183,201	0	913,264	1,582	5,667	1,207,409
VP Univ Advancement	0	0	0	0	0	0	0	47,831
Total University	5,949	121,485	201,146	861	950,592	40,517	5,667	3,384,000
University Controlled	0	0	0	4,784	0	78,970	886	98,409
Total Net Assignable Space	5,949	121,485	201,146	5,645	950,592	119,487	6,553	3,482,409
Building Support	0	72	156	0	25	2,981	1,254,927	1,258,361
TOTAL	5,949	121,556	201,302	5,644	950,617	122,468	1,261,480	4,740,770

NET ASSIGNABLE SPACE BY MAJOR USE & DIVISION
as of June 30, 2006

Net Assignable Space by Major Division



Net Assignable Space by Major Use



1. The National Robotics Engineering Consortium (NREC) Building is not included in the "leased" use category. It is counted among Carnegie Mellon Buildings within the appropriate use category.

PARKING CAPACITY
FISCAL YEARS 2005 to 2007

	<u>FY 2005 Spaces</u>	<u>FY 2006 Spaces</u>	<u>FY 2007 Spaces</u>
Permit Parking	2,418	2,661	2,568
Visitor Parking	242	272	272
Meter Parking	46	46	46
Utility Parking	28	28	28
Campus Street	301	301	301
Carnegie Mellon Area Total	3,035	3,308	3,215
Total Permits Issued	2,610	2,824	2,926

PERMIT PARKING CAPACITY BY LOT
FISCAL YEAR 2007

	<u>FY2007 Spaces</u>
Fine Arts	60
Sororities	25
Children's School	15
Doherty	120
East Campus Garage	686
6555 Penn Avenue	46
Fraternities	75
Morewood	
stacked	360
self	478
perimeter	30
Warner	10
Dithridge Street Garage	350
Porter-Hamerschlag-Wean	60
Tech Street	-
Alumni House	17
Whitfield Hall	50
Hamburg Hall	53
West Campus	11
Purnell Center	0
4902 Forbes	0
Pittsburgh Technology Center	141
CIC (gated/ungated)	91
300 S. Craig	18
Henry Street	9
Junction Hollow	9
Margaret Morrison Street	15
Schenley Park	-
Bramer House	5
Frew Street	9
Carnegie Mellon Permit Parking Total	2,743

PERMIT ASSIGNMENTS BY RELATIONSHIP
FISCAL YEAR 2007

	<u>FY2007 Spaces</u>
Faculty & Staff	2,779
Students (Graduate/Undergraduate)	137
Non-CMU	10
Total Permits Issued	2,926

Key to Buildings and Services

Carnegie Mellon® Campus Map

ACADEMIC BUILDINGS

Location	#	Name
B-6	16.	Alumni House
E-5	3.	Baker/Porter Hall
A-7	27.	Bramer House
D-4	172.	Collaborative Innovation Center
E-7	7.	College of Fine Arts
C-6	13.	Cyert Hall
D-6	4.	Doherty Hall
D-4	40.	Facilities Management Services Building
D-5	110.	Future Site of Gates Center for Computer Science & Unnamed Center for Computer Science
E-7	9.	Graduate School of Industrial Administration (GSIA)
E-8	10.	Gymnasium
C-5	17.	Hamburg Hall
F-4	2.	Hammerschlag Hall
E-6	8.	Hunt Library
D-7	11.	Margaret Morrison Carnegie Hall
C-2	14.	Mellon Institute
D-5	28.	Newell-Simon Hall
*	41.	Pittsburgh Technology Center
E-7	36.	Posner Center
C-6	34.	Purnell Center for the Arts
E-4	33.	Roberts Engineering Hall
*	26.	Robotics Engineering Consortium
E-4	1.	Scaife Hall
C-5	18.	Smith Hall
B-2	24.	Software Engineering Institute
C-7	80.	University Center
C-6	5.	Warner Hall
D-5	12.	Wean Hall
A-2	29.	Whitfield Hall
C-3	140.	300 South Craig Street
C-3	226.	311 South Craig Street
C-3	25.	407 South Craig Street
C-3	37.	4516 Henry Street
B-3	225.	4616 Henry Street
C-4	38.	4615 Forbes Ave.
*	32.	6555 Penn Avenue



PARKING AREAS

Location	#	Name
A-7	P1.	Fine Arts
D-8	P2.	Sororities
D-7	P3.	Children's School
B-8	P4.	Doherty
C-8	P5.	East Campus Garage
*	P6.	6555 Penn Avenue
B-6	P7.	Fraternities
B-5	P8.	Morewood
C-6	P9.	Warner
C-2	P10.	Dithridge Street Garage
E-4	P11.	Porter-Hammerschlag-Wean

* Off Campus, See City Area Map.

Location	#	Name
B-7	P13.	Alumni House
A-2	P14.	Whitfield Hall
D-5	P15.	Hamburg Hall
D-5	P16.	West Campus
C-5	P17.	Purnell Center
*	P19.	Pittsburgh Technology Center
D-4	P20.	Junction Hollow
A-7	P23.	Bramer House
E-5-7	P24.	Frew St. Disabled Parking
VP.		Visitor Parking
♿		Accessible Parking

Colleges

Carnegie Institute of Technology (CIT) – Scaife Hall
 Mellon College of Science (MCS) – Mellon Institute and Doherty Hall
 College of Humanities and Social Sciences (H&SS) – Baker Hall
 College of Fine Arts (CFA)
 Tepper School of Business (Tepper) – GSIA
 The H. John Heinz School of Public Policy and Management – Hamburg Hall
 School of Computer Science (SCS) – Wean Hall

Services

Office of Admission – Warner Hall
 Housing Office – Morewood Gardens
 Security – 300 South Craig St.

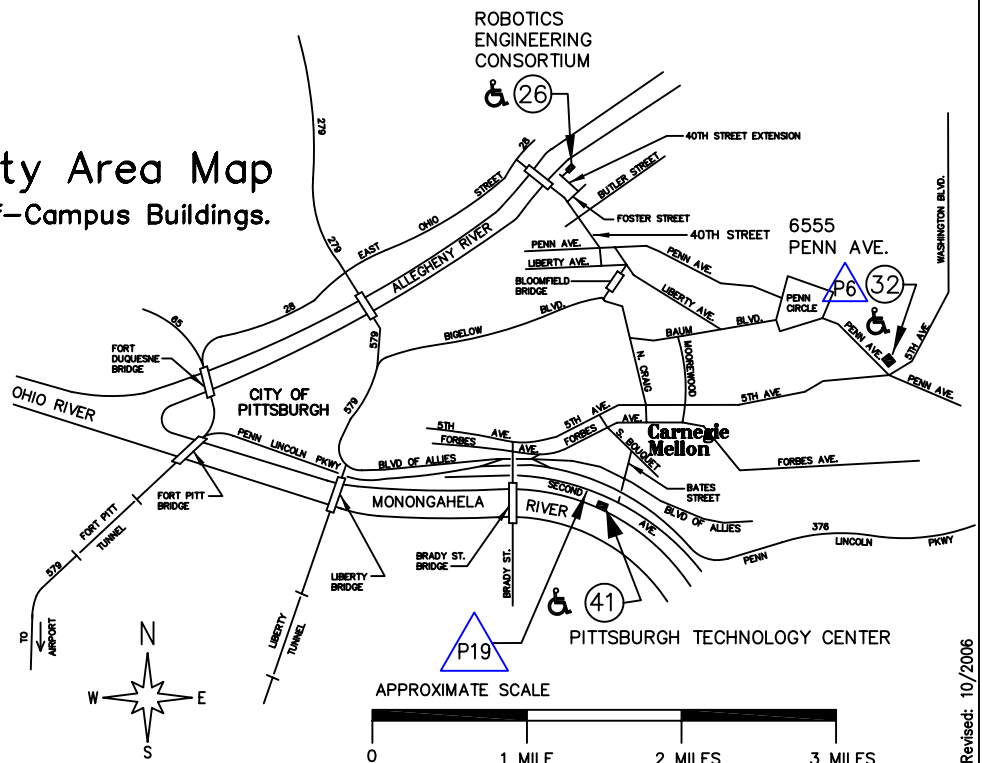
Information is available in the University Center and The Office of Student Affairs, Warner Hall.

RESIDENCE BUILDINGS

Location	#	Name
D-9	58.	Boss Hall
A-4	213.	Cathedral Mansions
B-8	61.	Doherty Apartments
D-8	62.	Donner Hall
B-3	209.	Fairfax Apartments
B-6	83.	Fraternity Quadrangle
D-9	54.	Hammerschlag House
E-9	55.	Henderson Hall
A-2	218.	London Terrace Apartments
D-9	68.	Margaret Morrison Apartments
D-9	70.	Margaret Morrison Sorority Houses
D-9	53.	McGill Hall
B-6	51.	Morewood Gardens
A-5	50.	Mudge House
A-6	96.	New House
D-8	81.	Resnik House
D-9	64.	Roselawn Terrace
D-8	57.	Scobell Hall
A-3	217.	Shady Oaks Apartments
B-1	79.	Shirley Apartments
D-9	59.	Spirit House
D-9	67.	Tech House
A-4	210.	Veronica Apartments
B-2	212.	Webster Hall
E-9	56.	Welch Hall
D-8	82.	West Wing
C-9	63.	Woodlawn Apartments
D-9	200.	99 Gladstone Road
B-7	201.	1094 Devon Road
D-8	142.	5045 Margaret Morrison St.

* Off Campus, See City Area Map.

City Area Map Off-Campus Buildings.

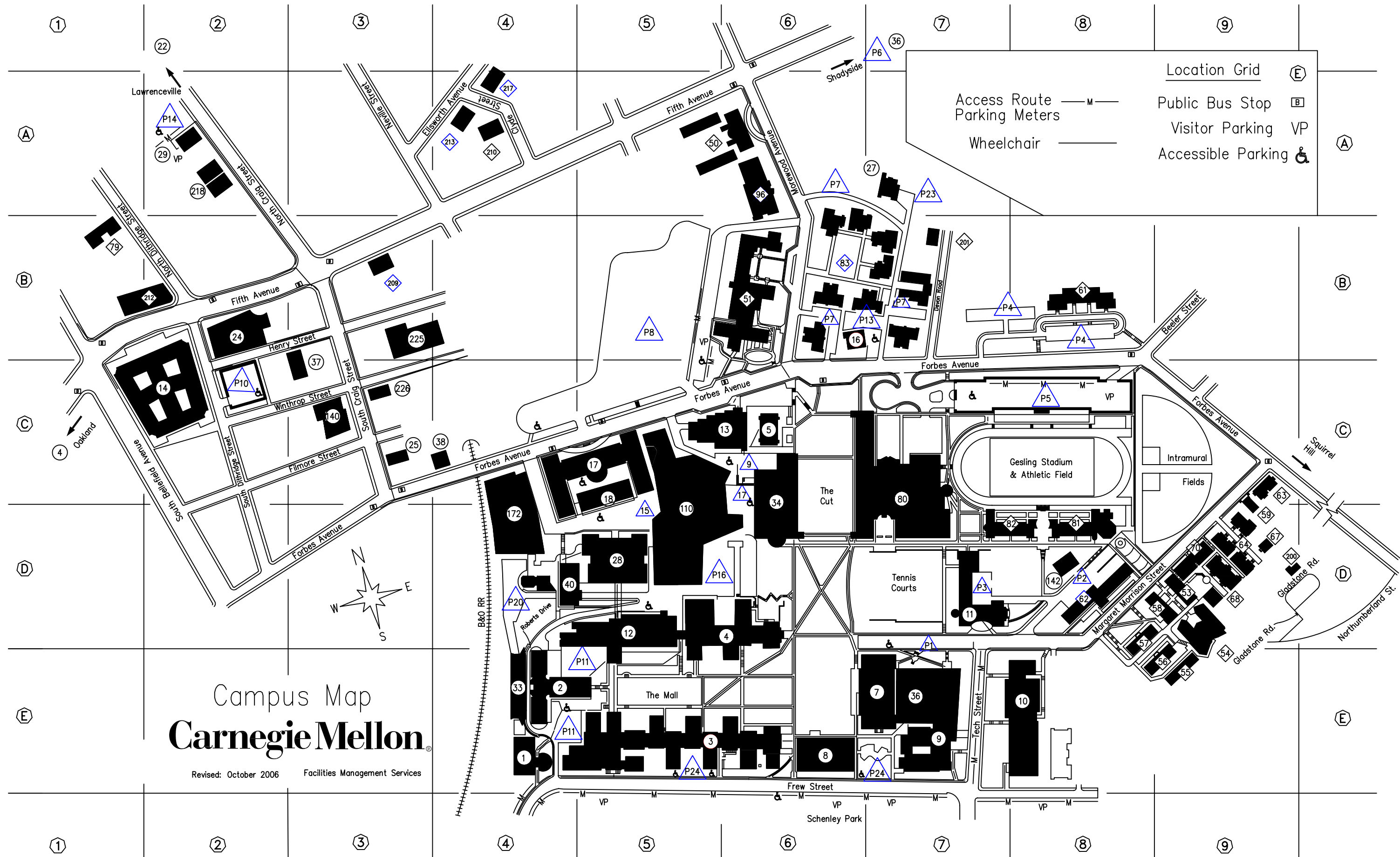
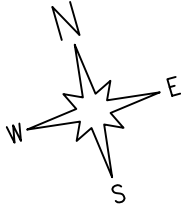


Revised: 10/2006

Campus Map Carnegie Mellon

Revised: October 2006 Facilities Management Services

Access Route	— M —	Location Grid	ⓔ
Parking Meters	— M —	Public Bus Stop	ⓑ
Wheelchair	— ♿ —	Visitor Parking	VP
		Accessible Parking	♿



Note: Building Number 110 is the future site of the Gates Center for Computer Science & Unnamed Center for Computer Science

