

Carnegie Mellon Facts 1990

Volume 4

**Margie Rennick, Editor
University Planning
Carnegie Mellon University
March, 1990**

Foreword

Carnegie Mellon Facts is a compilation of some of the most commonly requested data and statistical information about Carnegie Mellon. It covers a wide variety of topics including admissions, enrollment, teaching, faculty, alumni, and University finances. The source of the data shown in the tables and graphs is internal except where noted. The terms used are defined in the Appendix.

Carnegie Mellon Facts is intended as an internal document, produced annually for use by members of the campus community. We encourage you to keep this book handy and to use it as a reference. We received many valuable comments about last year's edition, and have made changes and additions wherever possible. We are again soliciting suggestions and comments on the contents, format and more generally, on ways to improve its usefulness to the campus community. Please tear out the last page of this booklet and respond to the brief questionnaire with your reactions. We will make every effort to respond.



Patrick J. Keating
Vice President for University Planning



Table of Contents

BACKGROUND

The University	3
University Organizational Chart. Academic Year 1989-90	4
Degree Programs. Academic Year 1989-90.....	6
College and Department Accreditations. Fall Semester 1989	9
Research Centers and Groups. Fiscal Year 1989	10
Endowed and Named Professors by College. Fiscal Year 1989.....	12
Current Campus Map. December 1989.	14
Current Campus Map, Building and Parking Listing.	15
Campus Master Plan Map. 1989	16

STUDENTS

Freshman Applicant Activity. Freshman Applicant Activity by College. Entering Fall Semesters 1985 to 1989	19
Freshman Average SAT Scores, CMU and National. Freshman Average SAT Scores by College. Entering Fall Semesters 1985 to 1989.....	20
Top Ten Competing Schools, Based on Application Overlap. Entering Freshmen 1973 to 1989.....	21
Enrolled Freshmen by Region and State. Entering Fall Semester 1989.....	22
Headcount Enrollment by Department, Level and Status. Fall Semester 1989.....	23
Undergraduate Headcount Enrollment by Region and State. Fall Semester 1989.....	24
Headcount Enrollment by Continent and Country of Citizenship. Fall Semester 1989	25
Headcount Enrollment by Department, Level and Sex. Fall Semester 1989	26
Headcount Enrollment by Department and Class. Fall Semester 1989.....	27
Full-Time Equivalent (FTE) Enrollment by Department and Class. Fall Semester 1989.....	28
Distribution of Students by Housing Type, Level and Sex. Fall Semester 1989	29
Headcount and Full-Time Equivalent (FTE) Enrollment by College, Level and Status. Fall Semesters 1984 to 1989	30
Average Within University Graduation and Persistence Rates by College and for CMU.	32
Total Degrees Granted by Department and Level. Academic Year 1988-89.....	33
Total Degrees Granted by College and Level. Academic Years 1984-85 to 1988-89	34

TEACHING AND ACADEMIC SUPPORT

Units Taught by Department, Semester and Level. Academic Year 1988-89.....	37
Units Taught by College and Level. Academic Years 1984-85 to 1988-89	38
Academic Computing Statistics. Fiscal Years 1986 and 1989 Carnegie Mellon Computing Environment. Academic Year 1989-90	39
Academic Services Statistics. Library and Instructional Technology Collections and Utilization. Fiscal Years 1988 and 1989.....	40
Teaching. Additional Facts and Figures.....	41

FACULTY

Total Headcount Faculty by Department, Category, and Status. Fall Semester 1989	45
Full-Time Regular Faculty by Rank and Department. Fall Semester 1989	46
Full-Time Regular Faculty by Tenure Status and Department. Fall Semester 1989	47
Full-Time Regular Faculty by College and Tenure Status. Fall Semesters 1985 to 1989.....	48
Full-Time Regular Faculty by Tenure Status and College. Fall Semester 1988. Full-Time Regular Faculty by Tenure Status. Fall Semesters 1985 to 1989	49
Average Faculty Salaries for Full-Time Regular Faculty. Academic Years 1985-86 to 1989-90	50
Regular Faculty. Additional Facts and Figures.	51

ALUMNI

Alumni By Region and State. Through August 1989.....	55
--	----

FINANCES

Tuition and Fees. Room and Board. Total Estimated Cost of Attending CMU. Academic Years 1985-86 to 1989-90.....	59
Undergraduate Scholarships & Grants by Source, Percent of Total. Undergraduate Financial Aid Resources by Source. Fiscal Years 1985 to 1989	60
Distribution of Educational and General Operating (E&GO) Income. Distribution of Educational and General Operating (E&GO) Expenditures and Transfers. Fiscal Year 1989	61
Percent of Educational and General Operating (E&GO) Income by Source. Educational and General Operating (E&GO) Income By Source. Fiscal Years 1985 to 1989	62
Percent of Educational and General Operating (E&GO) Expenditures and Transfers by Function. Educational and General Operating (E&GO) Expenditures and Transfers by Function. Fiscal Years 1985 to 1989	63
Total Sponsored Research Costs by College and Research Center. Fiscal Years 1985 to 1989	64

Total Sponsored Research Costs by Source. Total Sponsored Research Costs by Agency. Fiscal Years 1985 to 1989.....65

Total Giving by Source. Voluntary Support by Source and Purpose. Fiscal Years 1985 to 198966

Finances. Additional Facts and Figures.67

SPACE AND FACILITIES

Total Space in Square Footage, by Major Division, College/Division and Use Category. December 1989.....71

Total Space in Square Footage, by Major Division, College/Division and Building. December 1989.....72

APPENDIX

Definitions77

QUESTIONNAIRE83

BACKGROUND

The University

Carnegie Mellon is a privately supported research university dedicated to the pursuit of excellence in the creation and dissemination of knowledge and artistic endeavors.

Carnegie Mellon strives for excellence in the dissemination of knowledge through high-quality teaching in a liberal-professional educational curriculum. The liberal educational component provides students with a broad base of knowledge which enables them to excel and adapt in a changing world. The professional educational component encourages students to develop the specific background and skills required for success in their careers. In the tradition of the Carnegie Plan for broadly educating engineers and scientists, Carnegie Mellon strives to develop creative, well-rounded professionals with the skills and knowledge needed to tackle the problems of the future. The Middle States Association of Colleges and Schools, in its highly complimentary report, noted that Carnegie Mellon "has been very successful in articulating and communicating a sense of excellence and a drive toward greater excellence that seems to permeate the institution, affecting all from trustees to undergraduate students." This standard of excellence is carried beyond the campus in the accomplishments of alumni in diverse fields--most visibly in the performing and visual arts, research, business and computer science.

The creation of knowledge (scholarly and artistic) is essential to the continued vitality of the University. The small size of the University facilitates flexible, interdisciplinary approaches to scholarship and research. Carnegie Mellon is able to tackle problems that cut across the boundaries of departments and disciplines. Perhaps because of this, Carnegie Mellon consistently exhibits its leadership by identifying new opportunities for scholarship and research. Accordingly, in the fall of 1988 Carnegie Mellon became one of the nation's first major research universities to establish a School of Computer Science.

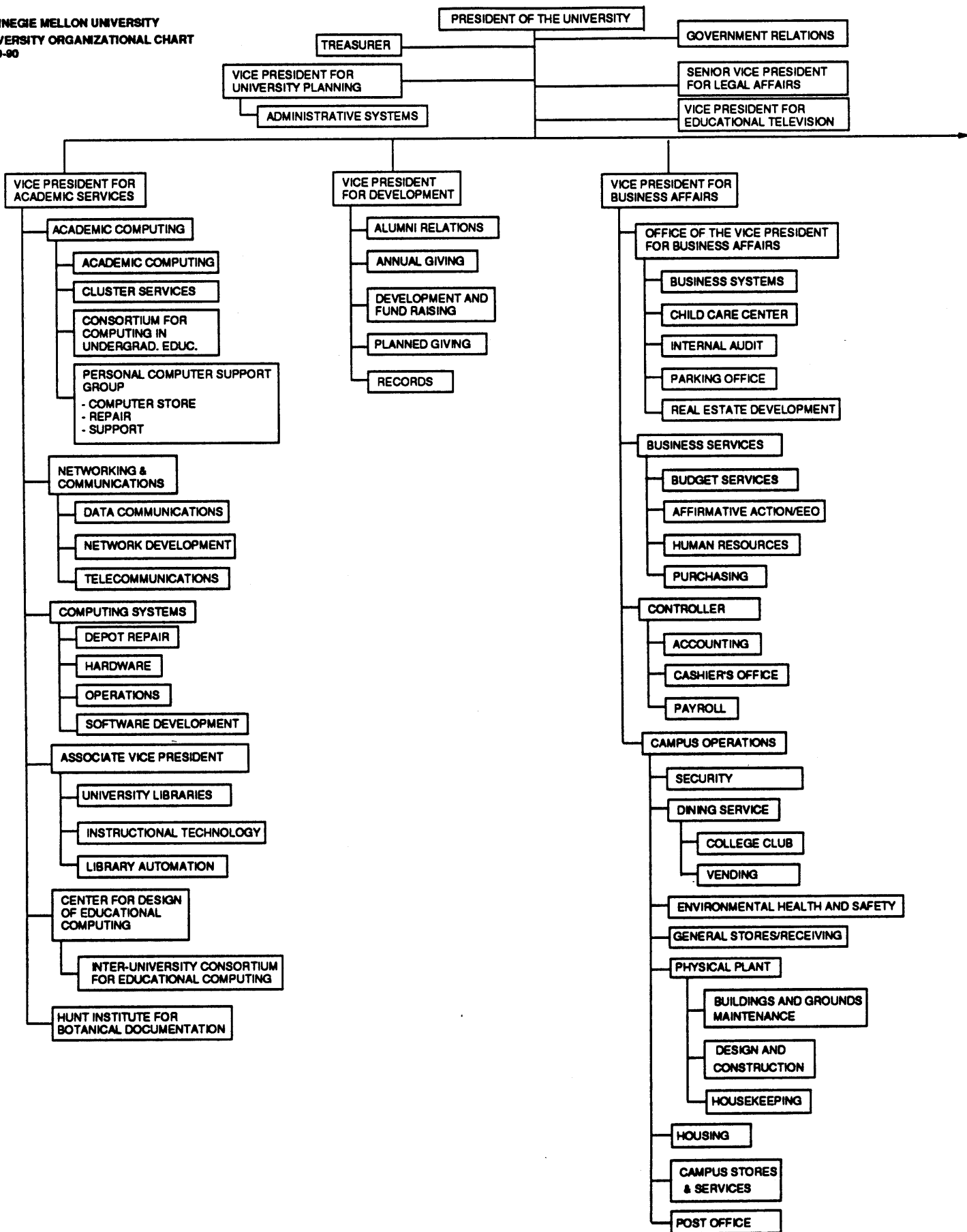
In a strategy which links research efforts with teaching and the dissemination of information, Carnegie Mellon has become an acknowledged leader in the development and application of computing technology in higher education. The pioneering *Andrew* computer network, a development effort initiated in 1982 and deployed beginning in January 1986, consists of a high speed campus-wide communications network, a network file system, mail and bulletin boards, library information, and connections to approximately 5,000 computers with a variety of different operating systems. Innovation in the use of computing technology is encouraged in all areas of educational endeavor at Carnegie Mellon.

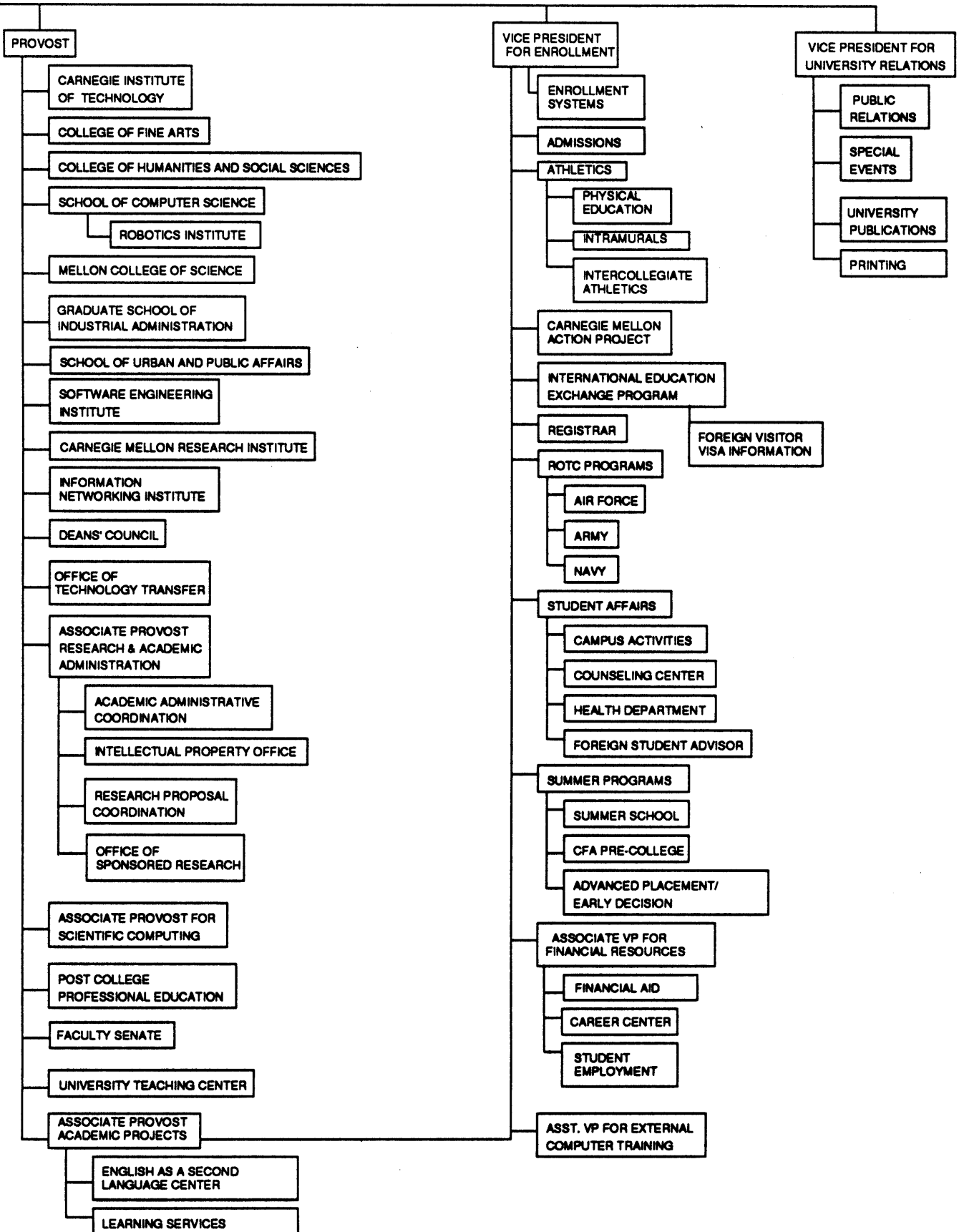
Carnegie Mellon endeavors to expand its role as a leader in the economic revitalization of Pittsburgh and Western Pennsylvania. To this end, Carnegie Mellon joined forces with the University of Pittsburgh in the development and administration of the Western Pennsylvania Advanced Technology Center, sponsored by the Ben Franklin Partnership Program. A Department of Defense contract to operate the Software Engineering Institute, established to disseminate software and plan training programs for software engineers, was competitively awarded to Carnegie Mellon in January 1985. In 1986, a consortium of Carnegie Mellon, University of Pittsburgh and Westinghouse Electric Corporation obtained support to establish a national supercomputing facility, one of four in the country. Most recently, Carnegie Mellon, the University of Pittsburgh and the City of Pittsburgh began cooperating in the redevelopment of the former Jones and Laughlin Steel site into a high technology research area.

As part of its commitment to improving the quality of life on campus, Carnegie Mellon is improving the nature and quality of the physical environment. This is occurring through the construction of a number of new buildings, the renovation of existing facilities and the redesign of the campus grounds. The outline for these improvements is contained in a comprehensive campus master plan. The first phase began in the summer of 1988 with the ground breaking for the East Campus Project, which will include two dormitories, a football stadium, intramural fields and a parking garage.

Over the years, Carnegie Mellon has successfully made the shift from a regional technical college to a national university known for its excellence and innovation in education and research. In the last decade, Carnegie Mellon has experienced an unparalleled period of planned growth and development. Undergraduate enrollment has risen 10 percent and has become more geographically diverse, and graduate enrollment has grown by 77 percent. In the future, plans are to maintain stable undergraduate enrollment and to increase graduate enrollment in relation to research initiatives. Also in the last decade, sponsored research has increased by 348% and is expected to continue to grow. These successes can be attributed to strategic planning, a continuous process which guides the University in recognizing and seizing new opportunities.

Built upon the strong educational ideals of its founders, Carnegie Mellon has grown into an institution of academic prominence. Rapid development to a leadership position in just three quarters of a century is a tribute to the thousands of men and women who have shaped and influenced the University. In the decades to come, Carnegie Mellon will continue to build upon these ideals in striving for excellence in its dual commitment to education and research.





CARNEGIE MELLON UNIVERSITY

**Degree Programs
By College and Department
Academic Year 1989-90**

CARNEGIE INSTITUTE OF TECHNOLOGY

Biomedical Engineering			
Engineering (Biomedical E. Option)	B.S.	Electrical and Computer Engineering	Computer E.
Biomedical E. with CIT Department	M.S.		Electrical E.
Biomedical E.	M.S.		Electrical and Computer E.
Biomedical E. with CIT Department	Ph.D.		Electrical and Computer E.
Biomedical E.	Ph.D.		
		Mechanical Engineering	
Chemical Engineering		Mechanical E.	B.S.
Chemical E.	B.S.	Mechanical E.	M.E.
Chemical E.	M.S.	Mechanical E.	M.S.
Chemical E.	Ph.D.	Mechanical E.	Ph.D.
Civil Engineering		Metallurgical Engineering & Materials Science	
Civil E.	B.S.	MEMS	B.S.
Civil E.	M.S.	MEMS	M.E.
Civil E.	Ph.D.	MEMS	M.S.
		MEMS	Ph.D.
Engineering and Public Policy			
Engineering Major & EPP	B.S.	Manufacturing Engineering	
EPP	M.S.	Manufacturing Engineering	M.M.E.
Engineering Major & EPP	M.S.	Colloids, Polymers, & Surfaces	M.S.
EPP	Ph.D.	(Interdisciplinary w/ MCS)	

COLLEGE OF FINE ARTS

	Master of Arts Management (w/ SUPA)	M.A.M.	Drama	
			Drama	B.F.A.
Architecture			Costume Design	M.F.A.
Architecture	B.Arch.		Directing	M.F.A.
Architecture (1st Professional degree)	M.Arch		Lighting Design	M.F.A.
Architecture	M.S.		Playwriting	M.F.A.
Architecture	Ph.D.		Production	M.F.A.
			Scene Design	M.F.A.
Art			Music	
Art	B.F.A.		Music Composition	B.F.A.
Art	M.F.A.		Music Performance	B.F.A.
			Music Composition	M.F.A.
Design			Music Conducting	M.F.A.
Graphic Design	B.F.A.		Music Performance	M.F.A.
Industrial Design	B.F.A.			

INDUSTRIAL MANAGEMENT	
Industrial Management	B.S.

CARNEGIE MELLON UNIVERSITY

**Degree Programs
By College and Department
Academic Year 1989-90**

COLLEGE OF HUMANITIES AND SOCIAL SCIENCES

Economics			Modern Languages Program	
Economics	B.A.		Modern Languages (Double Major)	B.A.
Economics	B.S.			
Managerial Economics	B.S.		Philosophy	
			Philosophy	B.A.
English			Logic & Computation	B.S.
Literary & Cultural Studies	B.A.		Logic & Computation	M.S.
Creative Writing	B.A.		Computational Linguistics	M.S.
Professional Writing	B.A.		Computational Linguistics	Ph.D.
Technical Writing	B.S.		(w/ U. of Pittsburgh)	
English	M.A.		Pure & Applied Logic (w/ Computer	Ph.D.
Professional Writing	M.A.		Science & Mathematics)	
Literary & Cultural Theory	Ph.D.			
Rhetoric	Ph.D.		Psychology	
			Psychology	B.A.
History			Psychology	B.S.
History	B.A.		Cognitive Science	B.S.
History	B.S.		Psychology	Ph.D.
Applied History	B.A.			
Applied History	B.S.		Social and Decision Sciences	
Social Science History	B.S.		Social & Decision Sciences	B.S.
European Studies (Double Major)	B.A.		Information & Decision Systems	B.S.
History	M.A.		Policy & Management	B.S.
Applied History	M.S.		Social & Decision Sciences	Ph.D.
History	Ph.D.		Social Science & Public Policy (w/ SUPA)	Ph.D.
Applied History	Ph.D.		Decision Making (w/ Statistics)	Ph.D.
Student Defined	B.A.		Statistics	
Student Defined	B.S.		Statistics	B.S.
			Statistics	M.S.
			Statistics	Ph.D.
			Decision Making (w/ S.&D.S)	Ph.D.

MELLON COLLEGE OF SCIENCE

Biological Sciences			Mathematics	
Biological Sciences	B.S.		Mathematics	B.S.
Biological Sciences & Humanities or Social Science	B.A.		Mathematics/Computer Science	B.S.
Biological Sciences	Ph.D.		Applied Mathematics (Operations Research)	B.S.
Biological Sciences/Biochemistry	Ph.D.		Applied Mathematics (Statistics)	B.S.
Biological Sciences/Biophysics	Ph.D.		Mathematics	M.S.
Biological Sciences/Biochemistry & Biophysics	Ph.D.		Applied Mathematics	M.S.
			Operations Research	M.S.
Chemistry			Mathematics	D.A.
Chemistry	B.A.		Mathematics	Ph.D.
Chemistry	B.S.		Algorithms, Combinatorics & Optimization (w/ Computer Science & GSIA)	Ph.D.
Chemistry/Computer Science Track	B.S.			
Chemistry	M.S.		Physics	
Chemical Instrumentation	M.S.		Physics	B.A.
Polymer Science	M.S.		Physics	B.S.
Colloids, Polymers, & Surfaces (w/ Chemical E.)	M.S.		Physics/Computer Science Track	B.S.
Chemistry	Ph.D.		Physics & Scientific Instrumentation	B.S.
Chemistry/Biochemistry	Ph.D.		Physics	M.S.
Chemistry/Biophysics	Ph.D.		Measurement & Control	M.S.
Chemistry/Biochemistry & Biophysics	Ph.D.		Physics	Ph.D.
			Applied Physics	Ph.D.
			Physics/Biochemistry	Ph.D.
			Physics/Biophysics	Ph.D.
			Physics/Biochemistry & Biophysics	Ph.D.

CARNEGIE MELLON UNIVERSITY

**Degree Programs
By College and Department
Academic Year 1989-90**

**GRADUATE SCHOOL OF INDUSTRIAL
ADMINISTRATION**

Industrial Administration	M.S.I.A.
Industrial Administration, minor in Public Management & Policy (w/ SUPA)	M.S.I.A.
Industrial Administration	Ph.D.
Accounting	Ph.D.
Algorithms, Combinatorics & Optimization (w/ Computer Science & Mathematics)	Ph.D.
Economics	Ph.D.
Financial Economics	Ph.D.
Information Systems	Ph.D.
Management of Manufacturing & Automation (w/ Robotics Institute)	Ph.D.
Manufacturing and Operations Systems	Ph.D.
Marketing	Ph.D.
Operations Research	Ph.D.
Organizational Psychology & Theory	Ph.D.
Politics and Political Economy	Ph.D.

SCHOOL OF COMPUTER SCIENCE

Software Engineering	M.S.
Algorithms, Combinatorics & Optimization (w/ GSIA & Mathematics)	Ph.D.
Computer Science	Ph.D.
Robotics	Ph.D.

CARNEGIE MELLON UNIVERSITY

Information Networking Institute Information Networking	M.S.
--	------

SCHOOL OF URBAN AND PUBLIC AFFAIRS

Public Management & Policy	M.S.
Public Management & Policy, minor in Business Administration (w/ GSIA)	M.S.
Public Management & Policy & Juris Doctor (w/ U. of Pittsburgh)	M.S.
Urban Development & Management (w/ Architecture)	M.S.
Master of Arts Management (w/ CFA)	M.A.M.
Master of Philosophy	M.Phil.
Master of Public Management	M.P.M.
Public Policy Analysis	Ph.D.
Architecture & Public Policy Analysis (w/ Architecture)	Ph.D.
Political Economy (w/ GSIA and S.&D.S)	Ph.D.
Social Science & Public Policy Analysis (w/ S & D S.)	Ph.D.

CARNEGIE MELLON UNIVERSITY

**College and Department Accreditations
By College
Fall Semester 1989**

College/Department

Accreditation Agency

CARNEGIE MELLON UNIVERSITY

Middle States Association of Colleges and Schools
MSA

CARNEGIE INSTITUTE OF TECHNOLOGY

Accreditation Board for Engineering Technology
ABET

Chemical Engineering
Civil Engineering
Computer Engineering
Electrical Engineering
Engineering and Public Policy
Mechanical Engineering
Metallurgical Engineering and Materials Science

COLLEGE OF FINE ARTS

Architecture

National Architectural Accrediting Board
NAAB

Art
Design

National Association of Schools of Art and Design
NASAD

Music

National Association of Schools of Music
NASM

COLLEGE OF HUMANITIES AND SOCIAL SCIENCES

Psychology

American Psychological Association
APA

MELLON COLLEGE OF SCIENCE

Chemistry

American Chemical Society
ACS

**GRADUATE SCHOOL OF INDUSTRIAL
ADMINISTRATION**

American Assembly of Collegiate Schools of Business
AACSB

SCHOOL OF URBAN AND PUBLIC AFFAIRS

National Association of Schools of Public Affairs and
Administration
NASPAA

CARNEGIE MELLON UNIVERSITY

Research Centers and Groups

Fall, 1989

Ben Franklin Technology Center (BFTC)

Center for Building Performance and Diagnostics (CBD)

Center for Decision Technology and Strategy Research (CDTSR)

Center for Dependable Systems (CDS)

Center for the Design of Educational Computing (CDEC)

Center for Economic Development (SUPA CED)

Center for Educational Computing in English (CECE)

Center for Energy and Environmental Studies (CEES)

Center for Entrepreneurial Development (CED)

Center for Excellence in Optical Data Processing (CEODP)

Center for Fluorescence Research in Biomedical Sciences (CFRBS)

Center for Integrated Manufacturing (CIM)

Center for Iron and Steelmaking Research (CISR)

Center for Labor Studies (CLS)

Center for Machine Translation (CMT)

Center for the Management of Technology (CMT)

Center for Product Research (CPR)

Center for Public Financial Management (CPFM)

Center for Risk Perception and Communication (CRPC)

Center for the Study of Public Policy (CSPP)

Center for the Study of Writing (CSW)

Center for Thin Film Sciences (CTFS)

Coalition to Improve Management in State and Local Government (CIMSLG)

Communications Design Center (CDC)

Donald Jones Enteperneural Center (DJEC)

Decision Systems Research Institute (DSRI)

Engineering Design Research Center (EDRC)

Hunt Institute for Botanical Documentation (HIBD)

CARNEGIE MELLON UNIVERSITY

**Research Centers and Groups
Fall, 1989**

Information Networking Institute (INI)

Information Technology Center (ITC)

Laboratory for Automated Systems & Information Processing (LASIP)

Laboratory for Computational Linguistics (LCL)

Magnetics Technology Center (MTC)

Marketing Center (MC)

Carnegie Mellon Research Institute (CMRI)

Advanced Devices and Materials Group (AD&MG)

ASTM Test Monitoring Center (ASTMC)

Battery Technology Center (BTC)

Biotechnology Center (BC)

Center for Human Service Robotics (CHSR)

Center for Metals Production (CMP)

Center for Surfaces and Coatings (CS&C)

Computer Engineering Center (CEC)

High Speed Ground Transportation Center (HSGTC)

High Technology Center (HTC)

Materials Characterization Center (MCC)

Rail Systems Center (RSC)

Research Center on the Materials of the Artist and Conservator (CMA&C)

NMR Facility for Biomedical Studies (NMRFBS)

Pittsburgh Center for Social History (PCSH) (w/ U. of Pittsburgh)

Pittsburgh NMR Center for Biomedical Research (NMRCBR) (w/ U. of Pittsburgh)

Pittsburgh Supercomputing Center (PSC) (w/ U. of Pittsburgh and Westinghouse)

Program on International Peace and Security (PIPS)

Robotics Institute (RI)

Software Engineering Institute (SEI)

SRC/CMU Research Center for Computer-Aided Design (SCR/CMU-RC-CAD)

Statistical Center for Quality Improvement (SCQI)

Studio for Creative Imagery (SFCI)

University Teaching Center (UTC)

Urban Systems Institute (USI)

CARNEGIE MELLON UNIVERSITY
Endowed and Named Professors
By College
Fiscal Year 1989

CARNEGIE INSTITUTE OF TECHNOLOGY

Alcoa Professor of Light Metals
Alumni Chair in Environmental Science and Engineering
Buhl Professor in Electrical Engineering
Howard M. Wilkoff Professor of Electrical Engineering
George Tallman Ladd Research Professor
George Westinghouse Professor of Engineering
Gulf Oil Foundation Chair in Science and/or Engineering Disciplines
J. F. Keithley Professor of Electrical and Computer Engineering
John E. Swearingen Chair of Chemical Engineering
Mobay Professor in Chemical Engineering
Posco Professor
R.F. Mehl Professor of Metallurgical Engineering & Materials Science
Rudolph R. & Florence Dean Professor of Chemical Engineering
Theodore Ahrens Professor of Engineering
U.A. & Helen Whitaker Professor of Electronics and Electrical Engineering
U.S. Steel Professor of Metallurgical Engineering & Materials Policy
Walter J. Blenko, Sr. Professor of Environmental Engineering
William J. Brown Professor Mechanical Engineering

COLLEGE OF FINE ARTS

Andrew Mellon Professor
Bessie F. Anathan Professor in Fine Arts
Dorothy L. Stubnitz Professor
Niernberg Professor of Design
T. David Fitzgibbon Chair in Architecture

COLLEGE OF HUMANITIES AND SOCIAL SCIENCES

Alumni Professor of Philosophy
D. O. Hebb Professor of Psychology
Howard Heinz Professor of the Humanities
Lee and Marge Gregg Professor of Psychology
Leonard J. Savage Professor of Statistics and Social Sciences
Maurice & Laura Falk Foundation in Social Relations
Thomas Stockham Baker Professor of English Literature
Walter VanDyke Bingham Professor of Psychology and Computer Science

MELLON COLLEGE OF SCIENCE

Alumni Professor of Biological Sciences
Buhl Professor of Theoretical Physics
Lord Professor of Chemistry
Otto Stern Professor of Physics

GRADUATE SCHOOL OF INDUSTRIAL ADMINISTRATION

Alumni Chair
BP America (Standard Oil) Chair
David M. & Barbara A. Kirr Professor of Organization
David T. & Lindsay J. Morgenthaler Professor of Entrepreneurship
Ford Foundation Distinguished Professor
Heinz Chair in Graduate School of Industrial Administration
IBM Chair in Information Systems at GSIA
James H. Higgins Chair
Richard M. Cyert Professor
Xerox, Junior Faculty Research Chair
Xerox, Junior Faculty Research Chair

Appointee

Howe, James M.
Rubin, Edward
Milnes, Arthur
Rohrer, Ronald A.
Hughes, William F.
Casasent, David
Visiting Professor
Not Filled
Westerberg, Arthur W.
Toor, Herbert
Fruehan, Richard J.
Aaronson, Hubert I.
Grossmann, Ignacio E.
Osterle, J. Fletcher
Director, Stephen W.
Paxton, Harold W.
McMichael, Francis C.
Chigier, Norman A.

Saalman, Howard
Anderson, Barbara J.B.
Olds, Herbert
Not Filled
Not Filled

Glymour, Clark
Just, Marcel A.
Stearns, Peter N.
Carpenter, Patricia A.
Kadane, Joseph B.
Fienberg, Stephen E.
Steinberg, Erwin R.
Anderson, John R.

Ho, Chien
Cutkosky, Richard E.
Not Filled
Griffiths, Robert B.

Balas, Egon
Londregan, John B.
Salancik, Gerald R.
Thorne, John R.
Meyers, Gerald C.
McCallum, Bennet T.
Thompson, Gerald L.
Lave, Lester B.
Sunder, Shyam
Bayer, Judy A.
Melone, Nancy

CARNEGIE MELLON UNIVERSITY
Endowed and Named Professors
By College
Fiscal Year 1989

SCHOOL OF URBAN AND PUBLIC AFFAIRS

Henry J. Heinz, II Professor of Urban Studies
J. Erik Jonsson Professor of Urban Systems and Operations Research

Not Filled
Blumstein, Alfred

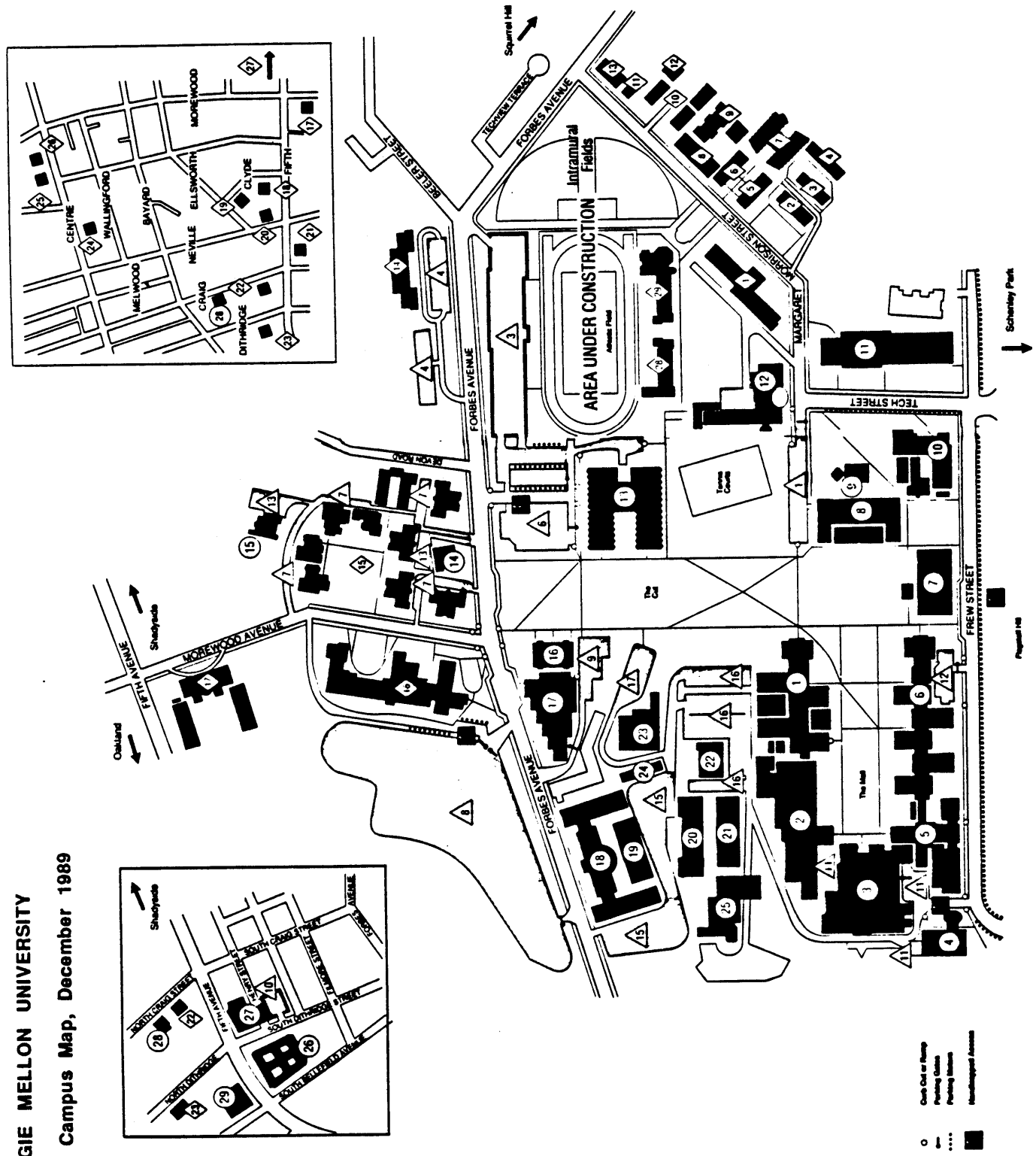
CARNEGIE MELLON UNIVERSITY

Hillman University Professor of Computer Science, Philosophy
and Mathematical Logic
J.M. Olin Professor of Political Economy and Public Policy
John Christian Warner University Professor of Natural Sciences
R.K. Mellon Professor of Computer Science
R.M. Trueblod University Professor of Accounting and Economics
Sun Company University Professor
U.A. & Helen Whitaker University Professor of Computer Science
University Professor
University Professor
University Professor
University Professor of Applied Science
University Professor of Composition
University Professor of Computer Science
University Professor of Electrical and Computer Engineering
University Professor of Statistics and Industrial Administration
William W. Cooper University Professor

Scott, Dana S.

Meltzer, Alan
Pople, John A.
Simon, Herbert A.
Ijiri, Yuji
Fenves, Stephen J.
Newell, Allen
Bothner-By, Askel A.
Wolfenstein, Lincoln
Zener, Clarence
Mullins, William W.
Balada, Leonardo
Reddy, D. Raj
Rohrer, Ronald A.
DeGroot, Morris H.
Davis, Otto

CARNEGIE MELLON UNIVERSITY
Current Campus Map, December 1989



CARNEGIE MELLON UNIVERSITY

**Current Campus Map
Building and Parking Listing
December, 1989**

ACADEMIC/ADMINISTRATION ○

- 1 Doherty Hall
- 2 Wean Hall
- 3 Hamershiag Hall
- 4 Scaife Hall
- 5 Porter Hall
- 6 Baker Hall
- 7 Hunt Library
- 8 College of Fine Arts
- 9 Studio Theatre
- 10 Graduate School of Industrial Administration
- 11 Gymnasium
- 12 Margaret Morrison Carnegie Hall
- 13 Skibo
- 14 5017 Forbes Avenue
- 15 Bramer House
- 16 Warner Hall
- 17 University Computing Center
- 18 Hamburg Hall
- 19 Elliot Dunlap Smith Hall
- 20 Field and Mobile Robotics Building
- 21 Mine Safety Laboratory Building
- 22 Planetary Robotics Building
- 23 Publications & Printing Building
- 24 West Garages
- 25 Physical Plant Building
- 26 Mellon Institute
- 27 Software Engineering Institute
- 28 College Club
- 29 Bellefield Towers

RESIDENCE BUILDINGS ◇

- 1 Donner Hall
- 2 Scobell Hall
- 3 Welch Hall
- 4 Henderson Hall
- 5 Boss Hall
- 6 McGill Hall
- 7 Hamerslag House
- 8 Margaret Morrison Sorority Houses
- 9 Margaret Morrison Plaza (street level)
- 10 Margaret Morrison Apartments
- 11 Roselawn Terrace
- 12 Tech House
- 13 Spirit House
- 14 Woodlawn Apartments
- 15 Doherty Apartments
- 16 Fraternity Quadrangle
- 17 Morewood Gardens
- 18 Mudge House
- 19 630 Clyde Street
- 20 Marybelle Apartments
- 21 Fifth Neville Apartments
- 22 Fairfax Apartments
- 23 London Terrace Apartments
- 24 Shirley Apartments
- 25 Hampshire Hall
- 26 Tudor Hall Apartments
- 27 Carol Apartments
- 28 Mark Watt Apartments
- 29 New Residence (under construction)
- 30 New Residence Hall & Dining Facility under construction)

PARKING AREAS △

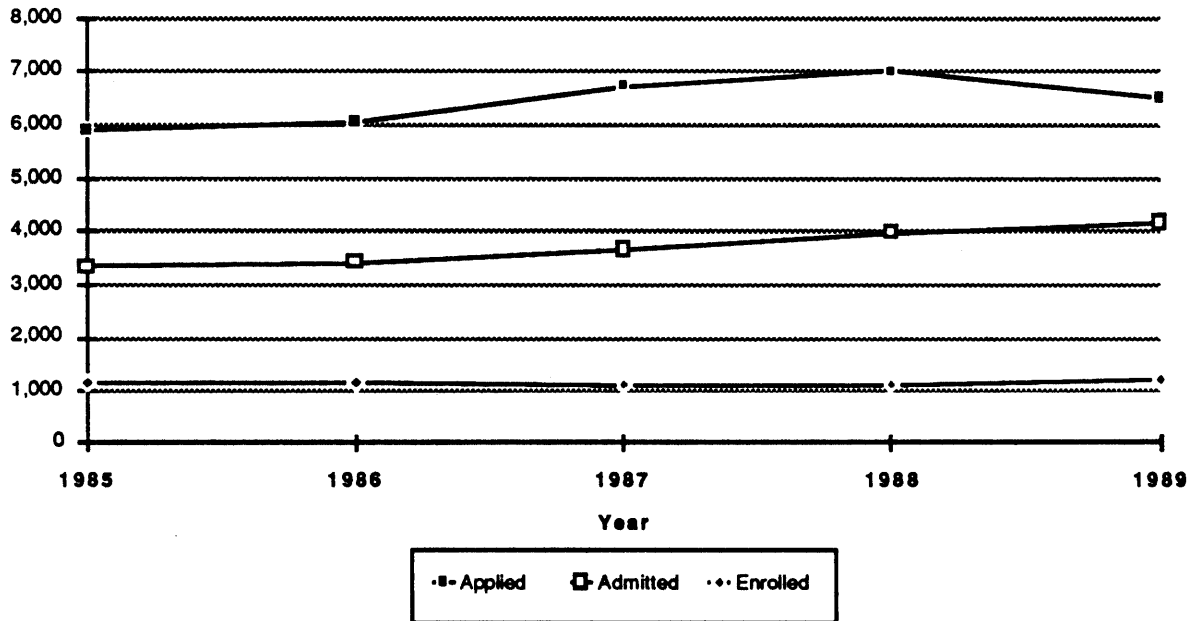
- 1 Fine Arts
- 3 Parking Garage
- 4 Doherty
- 6 Skibo B
- 7 Fraternities
- 8 Morewood
- 9 Warner
- 10 Dithridge Street Garage
- 11 Porter-Hamersschlag-Wean
- 12 Baker
- 13 Bramer House & 5017 Forbes Ave.
- 15 Hamburg Hall
- 16 Lower Bureau of Mines
- 17 Upper Bureau of Mines

UM Metered Lots open to visitors and campus members with payment of meter fee.

STUDENTS

CARNEGIE MELLON UNIVERSITY

**Freshman Applicant Activity
Entering Fall Semesters 1985 to 1989**

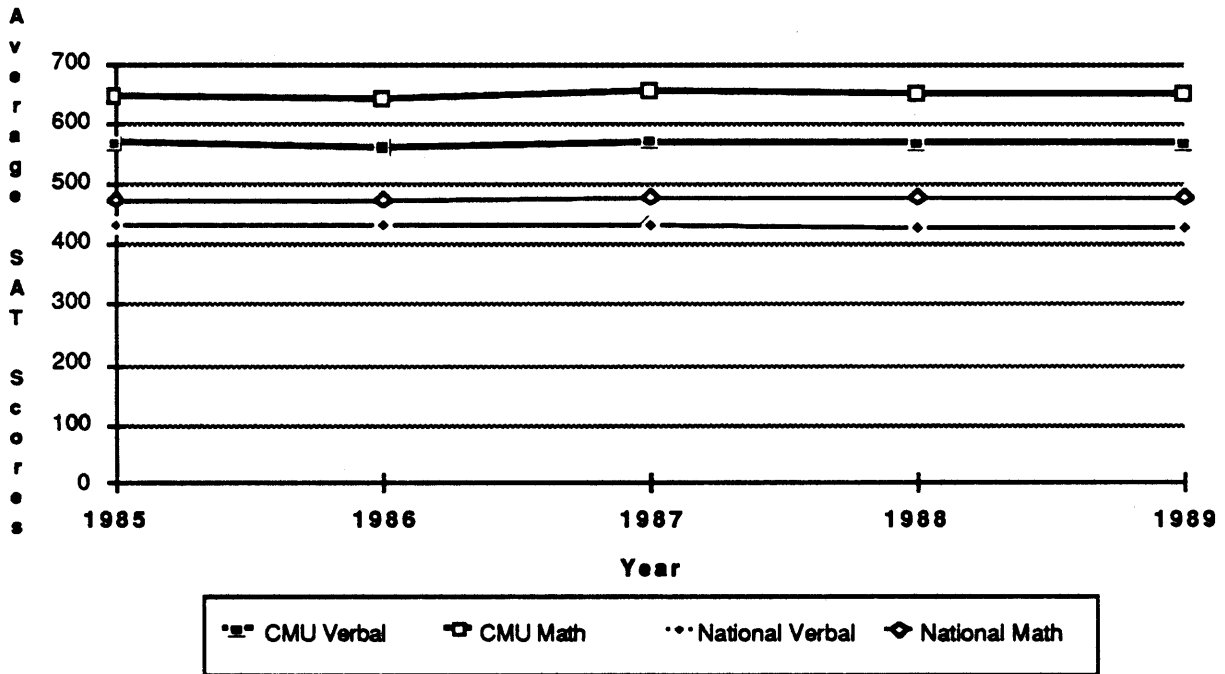


**Freshman Applicant Activity
By College
Entering Fall Semesters 1985 to 1989**

College	Applicant Activity	1985	1986	1987	1988	1989
CFA	Applied	1,133	1,283	1,462	1,680	1,494
	Admitted	498	593	661	667	632
	Admitted %	44%	46%	45%	40%	42%
	Enrolled	211	253	273	276	263
	Yield %	42%	43%	41%	41%	42%
CIT	Applied	2,451	2,365	2,501	2,304	2,209
	Admitted	1,139	1,109	1,080	1,213	1,349
	Admitted %	46%	47%	43%	53%	61%
	Enrolled	388	342	322	320	379
	Yield %	34%	31%	30%	26%	28%
H&SS	Applied	915	1,045	1,242	1,367	1,262
	Admitted	749	819	878	981	1,003
	Admitted %	82%	78%	71%	72%	79%
	Enrolled	257	266	251	238	249
	Yield %	34%	32%	29%	24%	25%
IM	Applied	257	304	319	409	374
	Admitted	163	161	171	199	229
	Admitted %	63%	53%	54%	49%	61%
	Enrolled	68	50	55	53	69
	Yield %	42%	31%	32%	27%	30%
MCS	Applied	1,133	1,046	1,233	1,264	1,176
	Admitted	797	765	859	930	947
	Admitted %	70%	73%	70%	74%	81%
	Enrolled	252	254	235	247	238
	Yield %	32%	33%	27%	27%	25%
CMU	Applied	5,889	6,043	6,757	7,024	6,515
	Admitted	3,346	3,447	3,649	3,990	4,160
	Admitted %	57%	57%	54%	57%	64%
	Enrolled	1,176	1,165	1,136	1,134	1,198
	Yield %	35%	34%	31%	28%	29%

CARNEGIE MELLON UNIVERSITY

**Freshman Average SAT Scores
CMU and National
Entering Fall Semesters 1985 to 1989**



**Freshman Average SAT Scores
By College
Entering Fall Semesters 1985 to 1989**

College		1985	1986	1987	1988	1989
CIT	Verbal	593	571	582	586	578
	Math	703	701	712	708	698
	Total	1,296	1,272	1,294	1,294	1,276
CFA	Verbal	517	517	538	530	537
	Math	562	560	572	572	589
	Total	1,079	1,077	1,110	1,102	1,126
H&SS	Verbal	561	560	577	562	564
	Math	593	597	624	614	612
	Total	1,154	1,157	1,201	1,176	1,176
IM	Verbal	554	544	554	571	553
	Math	627	648	641	645	651
	Total	1,181	1,192	1,195	1,216	1,204
MCS	Verbal	578	568	586	584	582
	Math	681	686	691	682	677
	Total	1,259	1,254	1,277	1,266	1,259
CMU	Verbal	567	555	570	567	565
	Math	645	642	652	647	649
	Total	1,212	1,197	1,222	1,214	1,214
National	Verbal	431	431	430	428	427
	Math	475	475	476	476	476
	Total	906	906	906	904	903

CARNEGIE MELLON UNIVERSITY

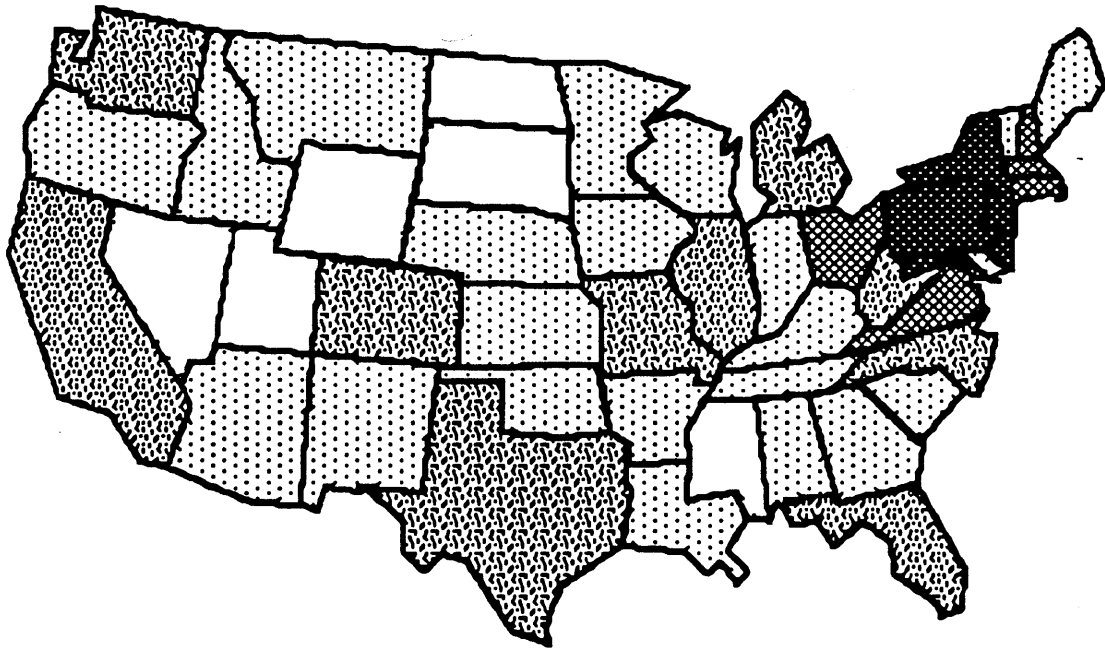
**Top Ten Competing Schools
Based on Application Overlap
Entering Freshman 1973 to 1989**

School	<u>Rank Each Year</u>								
	1989	1988	1987	1986	1985	1980	1976	1975	1973
Cornell	1	1	1	1	2	1	2	2	3
MIT	2	2	2	2	3	5	5	5	5
U of Penn	3	3	4	4	4	4	7	6	9
Princeton	4	5	5	5	7	9	9	8	9
RPI	5	6	3	3	1	2	4	4	4
Penn State	6	4	6	5	5	3	1	1	1
Boston U	7	9	11	10	10	10	11	**	12
Northwestern	8	13	16	9	14	11	14	15	**
Washington U	9	8	20	13	**	**	**	**	18
Stanford	10	12	9	13	8	**	**	**	**
Duke	10	19	13	25	**	**	**	35	21
Brown	13	15	14	8	9	13	**	11	14
Lehigh	14	11	10	7	6	6	6	9	7
Harvard	15	7	8	19	19	**	**	**	**
Yale	21	10	7	21	13	**	13	12	8
Syracuse	22	15	17	17	14	7	8	7	6
Case Western	28	34	26	20	26	10	10	9	13
Pittsburgh	32	30	28	27	24	8	3	3	2

** Not available among the ranked competitors for that year.

CARNEGIE MELLON UNIVERSITY

**Enrolled Freshmen
By Region and State
Entering Fall Semester 1989**



REGION/STATE	REGION/STATE	REGION/STATE	REGION/STATE		
New England	South	Midwest	West		
Connecticut	32 Alabama	2 Illinois	18 Alaska	2	
Maine	4 Florida	17 Indiana	8 Arizona	2	
Massachusetts	49 Georgia	7 Iowa	6 California	28	
New Hampshire	12 Kentucky	5 Kansas	6 Colorado	11	
Rhode Island	5 Louisiana	3 Michigan	13 Hawaii	7	
Vermont	2 Mississippi	0 Minnesota	7 Idaho	2	
TOTAL	104 North Carolina	12 Missouri	12 Montana	1	
Percent of Total	9% South Carolina	5 Nebraska	3 Nevada	0	
	Tennessee	5 North Dakota	0 Oregon	7	
Middle States	Virginia	38 Ohio	65 Utah	2	
Delaware	4	94 South Dakota	0 Washington	12	
District of Columbia	4	8% West Virginia	19 Wyoming	0	
Maryland	77	Wisconsin	7 TOTAL	74	
New Jersey	102	TOTAL	164	Percent of Total	6%
New York	135	Percent of Total	14%		
Pennsylvania	379	Southwest		U.S. TOTAL	1,161
TOTAL	701	Arkansas	1	Percent of Total	97%
Percent of Total	59%	New Mexico	3		
		Oklahoma	3		
		Texas	11		
		TOTAL	18		
		Percent of Total	2%		
		U.S. Territories	3		
		Unknown	3		
				Foreign Countries	37
				TOTAL	1,198

CARNEGIE MELLON UNIVERSITY

**Headcount Enrollment
By Department, Level and Status
Fall Semester 1989**

College	Department	Undergraduate			Graduate			Total Students		
		Full	Part	Total	Full	Part	Total	Full	Part	Total
CIT	Biomedical E.	0	0	0	4	0	4	4	0	4
	Chemical E.	110	3	113	60	24	84	170	27	197
	Civil E.	72	1	73	52	11	63	124	12	136
	E & C E.	364	20	384	182	38	220	546	58	604
	EPP	0	0	0	27	4	31	27	4	31
	Mfg. E.	0	0	0	3	0	3	3	0	3
	Mechanical E.	222	3	225	68	18	86	290	21	311
	MEMS	57	12	69	50	13	63	107	25	132
	Nuclear E.	0	0	0	0	0	0	0	0	0
	No Major Dept.	376	1	377	0	0	0	376	1	377
	TOTAL CIT	1,201	40	1,241	446	108	554	1,647	148	1,795
CFA	Architecture	254	8	262	48	20	68	302	28	330
	Art	251	16	267	8	0	8	259	16	275
	Design	143	4	147	0	0	0	143	4	147
	Drama	155	3	158	28	8	36	183	11	194
	Music	130	6	136	0	53	53	130	59	189
	TOTAL CFA	933	37	970	84	81	165	1,017	118	1,135
H&SS	Economics	66	1	67	0	0	0	66	1	67
	English	157	14	171	34	45	79	191	59	250
	History	64	3	67	21	45	66	85	48	133
	IM - H&SS	72	1	73	0	0	0	72	1	73
	Philosophy	13	4	17	7	5	12	20	9	29
	Psychology	40	6	46	29	3	32	69	9	78
	S & D S.	105	11	116	4	4	8	109	15	124
	Statistics	2	0	2	25	7	32	27	7	34
	Student Def'd	2	0	2	0	0	0	2	0	2
	No Major Dept.	510	6	516	2	0	2	512	6	518
TOTAL H&SS	1,031	46	1,077	122	109	231	1,153	155	1,308	
IM	239	6	245	0	0	0	239	6	245	
INI	0	0	0	24	0	24	24	0	24	
MCS	Biology	86	1	87	55	5	60	141	6	147
	Chemistry	56	3	59	45	18	63	101	21	122
	Math	274	22	296	39	6	45	313	28	341
	Physics	80	3	83	65	5	70	145	8	153
	No Major Dept.	236	2	238	0	0	0	236	2	238
TOTAL MCS	732	31	763	204	34	238	936	65	1,001	
SCS	Comp. Sci.	0	0	0	163	13	176	163	13	176
	Robotics	0	0	0	17	0	17	17	0	17
	TOTAL SCS	0	0	0	180	13	193	180	13	193
GSIA	0	0	0	457	209	666	457	209	666	
SUPA	0	0	0	226	291	517	226	291	517	
NON-DEGREE	0	0	0	0	0	0	8	198	206	
TOTAL	4,136	160	4,296	1,743	845	2,588	5,887	1,203	7,090	

CARNEGIE MELLON UNIVERSITY

**Headcount Enrollment
By Continent and Country of Citizenship
Fall Semester 1989**

Continent	Country	Undergraduate	Graduate	Special	Total
Africa	Egypt	0	4	1	5
	Kenya	0	1	0	1
	South Africa	0	4	0	4
	Tunisia	0	1	0	1
	TOTAL	0	10	1	11
Asia	China (Peoples Republic)	2	94	0	96
	China (Taiwan)	6	65	1	72
	Hong Kong	14	8	0	22
	India	10	151	0	161
	Indonesia	3	16	0	19
	Iran	0	2	0	2
	Israel	0	12	0	12
	Japan	6	32	1	39
	Lebanon	2	2	0	4
	Malaysia	12	8	0	20
	Pakistan	1	6	0	7
	Philippines	3	7	0	10
	Saudi Arabia	0	2	0	2
	South Korea	13	53	4	70
	Thailand	3	1	0	4
	Turkey	1	11	0	12
TOTAL	76	470	6	552	
Australia	Australia	0	2	1	3
	New Zealand	0	1	0	1
	TOTAL	0	3	1	4
Europe	Austria	1	2	1	4
	Belgium	0	14	0	14
	Denmark	0	2	0	2
	Finland	0	1	0	1
	France	7	9	0	16
	Greece	0	15	0	15
	Iceland	1	2	0	3
	Ireland	0	2	0	2
	Italy	2	12	0	14
	Netherlands	1	5	0	6
	Norway	0	2	0	2
	Poland	0	2	0	2
	Spain	0	19	0	19
	Sweden	1	4	0	5
	Switzerland	7	5	0	12
	United Kingdom	9	14	0	23
West Germany	2	11	2	15	
Yugoslavia	0	2	0	2	
TOTAL	31	123	3	157	
Central/South America	Argentina	2	3	0	5
	Brazil	0	6	0	6
	Columbia	0	2	0	2
	Dominican Republic	0	1	0	1
	Ecuador	1	1	0	2
	Guatemala	0	2	0	2
	Jamaica	1	1	0	2
	Mexico	2	23	0	25
	Peru	0	3	0	3
	Venezuela	0	1	0	1
TOTAL	6	43	0	49	
North America	Canada	6	41	0	47
Other	TOTAL	17	60	0	77
Total Non-US Citizens		136	750	11	897
Total US Citizens		4,160	1,838	195	6,193
TOTAL		4,296	2,588	206	7,090

CARNEGIE MELLON UNIVERSITY

**Headcount Enrollment
By Department, Level and Sex
Fall Semester 1989**

College	Department	Undergraduate			Graduate			Total Students		
		Male	Female	Total	Male	Female	Total	Male	Female	Total
CFA	Architecture	180	82	262	42	26	68	222	108	330
	Art	109	158	267	3	5	8	112	163	275
	Design	67	80	147	0	0	0	67	80	147
	Drama	96	62	158	21	15	36	117	77	194
	Music	54	82	136	30	23	53	84	105	189
	TOTAL CFA	506	464	970	96	69	165	602	533	1,135
CIT	Biomedical E.	0	0	0	1	3	4	1	3	4
	Chemical E.	85	28	113	60	24	84	145	52	197
	Civil E.	59	14	73	55	8	63	114	22	136
	E & C E.	349	35	384	198	22	220	547	57	604
	EPP	0	0	0	26	5	31	26	5	31
	Mfg. E.	0	0	0	3	0	3	3	0	3
	Mechanical E.	206	19	225	79	7	86	285	26	311
	MEMS	54	15	69	55	8	63	109	23	132
	Nuclear E.	0	0	0	0	0	0	0	0	0
	No Major Dept.	325	52	377	0	0	0	325	52	377
TOTAL CIT	1,078	163	1,241	477	77	554	1,555	240	1,795	
H&SS	Economics	47	20	67	0	0	0	47	20	67
	English	68	103	171	27	52	79	95	155	250
	History	37	30	67	39	27	66	76	57	133
	IM - H&SS	55	18	73	0	0	0	55	18	73
	Philosophy	12	5	17	11	1	12	23	6	29
	Psychology	25	21	46	25	7	32	50	28	78
	S & D S.	82	34	116	7	1	8	89	35	124
	Statistics	1	1	2	21	11	32	22	12	34
	Student Def'd.	0	2	2	0	0	0	0	2	2
	No Major Dept.	296	220	516	2	0	2	298	220	518
	TOTAL H&SS	623	454	1,077	132	99	231	755	553	1,308
	IM	175	70	245	0	0	0	175	70	245
	INI	0	0	0	19	5	24	19	5	24
MCS	Biology	51	36	87	29	31	60	80	67	147
	Chemistry	39	20	59	48	15	63	87	35	122
	Math	244	52	296	39	6	45	283	58	341
	Physics	75	8	83	63	7	70	138	15	153
	No Major Dept.	186	52	238	0	0	0	186	52	238
TOTAL MCS	595	168	763	179	59	238	774	227	1,001	
SCS	Comp. Sci.	0	0	0	154	22	176	154	22	176
	Robotics	0	0	0	15	2	17	15	2	17
	TOTAL SCS	0	0	0	169	24	193	169	24	193
GSIA	0	0	0	528	138	666	528	138	666	
SUPA	0	0	0	245	272	517	245	272	517	
NON-DEGREE	0	0	0	0	0	0	120	86	206	
TOTAL		2,977	1,319	4,296	1,845	743	2,588	4,942	2,148	7,090

CARNEGIE MELLON UNIVERSITY

**Headcount Enrollment
By Department and Class
Fall Semester 1989**

College	Department	Undergraduate				Total	Graduate	Headcount
		Fresh.	Soph.	Junr.	Senr.		Total	Total
CIT	Biomedical E.	0	0	0	0	0	4	4
	Chemical E.	0	39	39	35	113	84	197
	Civil E.	2	29	18	24	73	63	136
	E & C E.	0	138	126	120	384	220	604
	EPP	0	0	0	0	0	31	31
	Mfg. E.	0	0	0	0	0	3	3
	Mechanical E.	0	94	60	71	225	86	311
	MEMS	0	17	27	25	69	63	132
	Nuclear E.	0	0	0	0	0	0	0
	No Major Dept.	375	2	0	0	377	0	377
	TOTAL CIT	377	319	270	275	1,241	554	1,795
CFA	Architecture	80	68	46	68	262	68	330
	Art	105	55	56	51	267	8	275
	Design	0	55	42	50	147	0	147
	Drama	54	45	30	29	158	36	194
	Music	51	37	20	28	136	53	189
		TOTAL CFA	290	260	194	226	970	165
H&SS	Economics	0	0	32	35	67	0	67
	English	0	1	71	99	171	79	250
	History	0	1	33	33	67	66	133
	IM - H&SS	41	32	0	0	73	0	73
	Philosophy	0	0	10	7	17	12	29
	Psychology	0	0	24	22	46	32	78
	S & D S.	0	0	52	64	116	8	124
	Statistics	0	0	1	1	2	32	34
	Student Def'd	0	0	1	1	2	0	2
	No Major Dept.	257	224	34	1	516	2	518
	TOTAL H&SS	298	258	258	263	1,077	231	1,308
	IM	29	30	92	94	245	0	245
	INI	0	0	0	0	0	24	24
MCS	Biology	0	38	26	23	87	60	147
	Chemistry	0	18	14	27	59	63	122
	Math	0	97	81	118	296	45	341
	Physics	0	31	25	27	83	70	153
	No Major Dept.	236	0	2	0	238	0	238
		TOTAL MCS	236	184	148	195	763	238
SCS	Comp. Sci.	0	0	0	0	0	176	176
	Robotics	0	0	0	0	0	17	17
		TOTAL SCS	0	0	0	0	193	193
GSIA		0	0	0	0	666	666	
SUPA		0	0	0	0	517	517	
	NON-DEGREE	0	0	0	0	0	206	
TOTAL		1,230	1,051	962	1,053	4,296	2,588	7,090

CARNEGIE MELLON UNIVERSITY

**Full-Time Equivalent (FTE) Enrollment
By Department and Class
Fall Semester 1989**

College	Department	Undergraduate				Total	Graduate	FTE
		Fresh.	Soph.	Junr.	Senr.		Total	Total
CIT	Biomedical E.	0.0	0.0	0.0	0.0	0.0	4.0	4.0
	Chemical E.	0.0	39.0	39.0	34.3	112.3	66.1	178.4
	Civil E.	2.0	29.0	18.0	23.8	72.8	56.2	129.0
	E & C E.	0.0	138.0	120.0	112.9	370.9	197.1	568.0
	EPP	0.0	0.0	0.0	0.0	0.0	28.9	28.9
	Mfg. E.	0.0	0.0	0.0	0.0	0.0	3.0	3.0
	Mechanical E.	0.0	93.5	59.0	70.5	223.0	75.3	298.3
	MEMS	0.0	17.0	27.0	15.9	59.9	51.9	111.8
	Nuclear E.	0.0	0.0	0.0	0.0	0.0	0.0	0.0
	No Major Dept.	375.0	1.5	0.0	0.0	376.5	0.0	376.5
TOTAL CIT	377.0	318.0	263.0	257.4	1,215.4	482.5	1,697.9	
CFA	Architecture	80.0	67.8	45.0	65.5	258.3	55.9	314.2
	Art	104.8	55.0	50.3	47.5	257.6	8.0	265.6
	Design	0.0	55.0	41.8	49.4	146.2	0.0	146.2
	Drama	53.3	45.0	30.0	28.2	156.5	32.6	189.1
	Music	50.7	37.0	20.0	27.1	134.8	30.7	165.5
	TOTAL CFA	288.8	259.8	187.1	217.7	953.4	127.2	1,080.6
H&SS	Economics	0.0	0.0	32.0	35.0	67.0	0.0	67.0
	English	0.0	1.0	68.0	95.0	164.0	42.7	206.7
	History	0.0	1.0	33.0	31.8	65.8	29.4	95.2
	IM - H&SS	41.0	32.0	0.0	0.0	73.0	0.0	73.0
	Philosophy	0.0	0.0	8.5	6.3	14.8	7.6	22.4
	Psychology	0.0	0.0	23.3	20.3	43.6	29.4	73.0
	S & D S.	0.0	0.0	51.9	60.5	112.4	5.3	117.7
	Statistics	0.0	0.0	1.0	1.0	2.0	26.0	28.0
	Student Def'd	0.0	0.0	1.0	1.0	2.0	0.0	2.0
	No Major Dept.	257.0	221.5	33.5	1.0	513.0	2.0	515.0
TOTAL H&SS	298.0	255.5	252.2	251.9	1,057.6	142.4	1,200.0	
IM		29.0	30.0	91.5	92.3	242.8	0.0	242.8
INI		0.0	0.0	0.0	0.0	0.0	24.0	24.0
MCS	Biology	0.0	38.0	25.0	23.0	86.0	57.5	143.5
	Chemistry	0.0	18.0	12.5	26.5	57.0	48.1	105.1
	Math	0.0	96.0	78.3	108.9	283.2	40.3	323.5
	Physics	0.0	31.0	22.0	26.8	79.8	64.5	144.3
	No Major Dept.	235.0	0.0	2.0	0.0	237.0	0.0	237.0
	TOTAL MCS	235.0	183.0	139.8	185.2	743.0	210.4	953.4
SCS	Comp. Sci.	0.0	0.0	0.0	0.0	0.0	168.4	168.4
	Robotics	0.0	0.0	0.0	0.0	0.0	17.0	17.0
	TOTAL SCS	0.0	0.0	0.0	0.0	0.0	185.4	185.4
GSIA		0.0	0.0	0.0	0.0	568.5	568.5	
SUPA		0.0	0.0	0.0	0.0	312.7	312.7	
NON-DEGREE		0.0	0.0	0.0	0.0	0.0	79.8	
TOTAL		1,227.8	1,046.3	933.6	1,004.5	4,212.2	2,053.1	6,345.1

CARNEGIE MELLON UNIVERSITY

**Distribution of Students
By Housing Type, Level and Sex
Fall Semester 1989**

		<u>Carnegie Mellon Housing</u>			<u>Fraternity & Sorority</u>	<u>Non-CMU Housing</u>	<u>TOTAL</u>
		<u>On-Campus</u>	<u>Off-Campus</u>	<u>Total</u>			
Undergraduate							
Freshman							
Male		664	179	843	0	14	857
Female		327	15	342	0	31	373
TOTAL		991	194	1,185	0	45	1,230
Sophomore							
Male		457	39	496	190	46	732
Female		224	20	244	30	45	319
TOTAL		681	59	740	220	91	1,051
Junior							
Male		198	46	244	135	286	665
Female		160	18	178	25	94	297
TOTAL		358	64	422	160	380	962
Senior							
Male		152	45	197	95	431	723
Female		94	16	110	25	195	330
TOTAL		246	61	307	120	626	1,053
Undergraduate							
Male		1,471	309	1,780	420	777	2,977
Female		805	69	874	80	365	1,319
TOTAL		2,276	378	2,654	500	1,142	4,296
Graduate							
Male		5	1	6	0	1,839	1,845
Female		2	1	3	0	740	743
TOTAL		7	2	9	0	2,579	2,588
Non-Degree							
Male		0	0	0	0	120	120
Female		0	0	0	0	86	86
TOTAL		0	0	0	0	206	206
TOTAL							
Male		1,476	310	1,786	420	2,736	4,942
Female		807	70	877	80	1,191	2,148
TOTAL		2,283	380	2,663	500	3,927	7,090

CARNEGIE MELLON UNIVERSITY

**Headcount and FTE Enrollment
By College, Level and Status
Fall Semesters 1984 to 1989**

College	Status	1984			1985			1986		
		Underg.	Grad.	Total	Underg.	Grad.	Total	Underg.	Grad.	Total
CIT	Headcount									
	Full	1,315	423	1,738	1,361	451	1,812	1,320	490	1,810
	Part	37	148	185	42	141	183	31	132	163
	Total	1,352	571	1,923	1,403	592	1,995	1,351	622	1,973
FTE	1,324.0	475.4	1,799.4	1,375.6	501.6	1,877.2	1,326.8	559.0	1,885.8	
CFA	Headcount									
	Full	847	76	923	811	85	896	814	88	902
	Part	33	71	104	25	56	81	41	54	95
	Total	880	147	1,027	836	141	977	855	142	997
FTE	864.7	115.3	980.0	827.6	118.7	946.3	839.5	115.8	955.3	
H&SS	Headcount									
	Full	859	89	948	941	109	1,050	952	103	1,055
	Part	16	94	110	23	91	114	37	92	129
	Total	875	183	1,058	964	200	1,164	989	195	1,184
FTE	867.9	112.1	980.0	955.6	127.8	1,083.4	975.5	120.1	1,095.6	
IM	Headcount									
	Full	227	0	227	244	0	244	241	0	241
	Part	1	0	1	6	0	6	6	0	6
	Total	228	0	228	250	0	250	247	0	247
FTE	228.5	0.0	228.5	247.7	0.0	247.7	243.3	0.0	243.3	
INI	Headcount									
	Full	0	0	0	0	0	0	0	0	0
	Part	0	0	0	0	0	0	0	0	0
	Total	0	0	0	0	0	0	0	0	0
FTE			0.0			0.0			0.0	
MCS	Headcount									
	Full	857	194	1,051	860	212	1,072	842	194	1,036
	Part	26	21	47	33	15	48	33	29	62
	Total	883	215	1,098	893	227	1,120	875	223	1,098
FTE	867.9	201.4	1,069.3	879.4	217.3	1,096.7	856.4	211.2	1,067.6	
SCS	Headcount									
	Full	0	117	117	0	125	125	0	140	140
	Part	0	4	4	0	4	4	0	5	5
	Total	0	121	121	0	129	129	0	145	145
FTE	0.0	117.8	117.8	0.0	127.0	127.0	0.0	148.9	148.9	
GSIA	Headcount									
	Full	0	287	287	0	313	313	0	332	332
	Part	0	13	13	0	55	55	1	116	117
	Total	0	300	300	0	368	368	1	448	449
FTE	0.0	285.3	285.3	0.0	340.2	340.2	0.6	391.2	391.8	
SUPA	Headcount									
	Full	6	172	178	4	188	192	2	161	163
	Part	2	134	136	0	209	209	0	282	282
	Total	8	306	314	4	397	401	2	443	445
FTE	7.1	232.5	239.6	4.0	271.0	275.0	2.0	257.3	259.3	
TOTAL*	Headcount									
	Full	4,111	1,358	5,474	4,221	1,483	5,717	4,171	1,508	5,685
	Part	115	485	777	129	571	904	149	710	1,067
	Total	4,226	1,843	6,251	4,350	2,054	6,621	4,320	2,218	6,752
FTE	4,160.1	1,539.8	5,764.6	4,289.9	1,703.6	6,077.9	4,244.1	1,803.5	6,123.4	

*Total includes Non-Degree Headcount and FTE Enrollment

CARNEGIE MELLON UNIVERSITY

Headcount and FTE Enrollment
By College, Level and Status
Fall Semesters 1984 to 1989

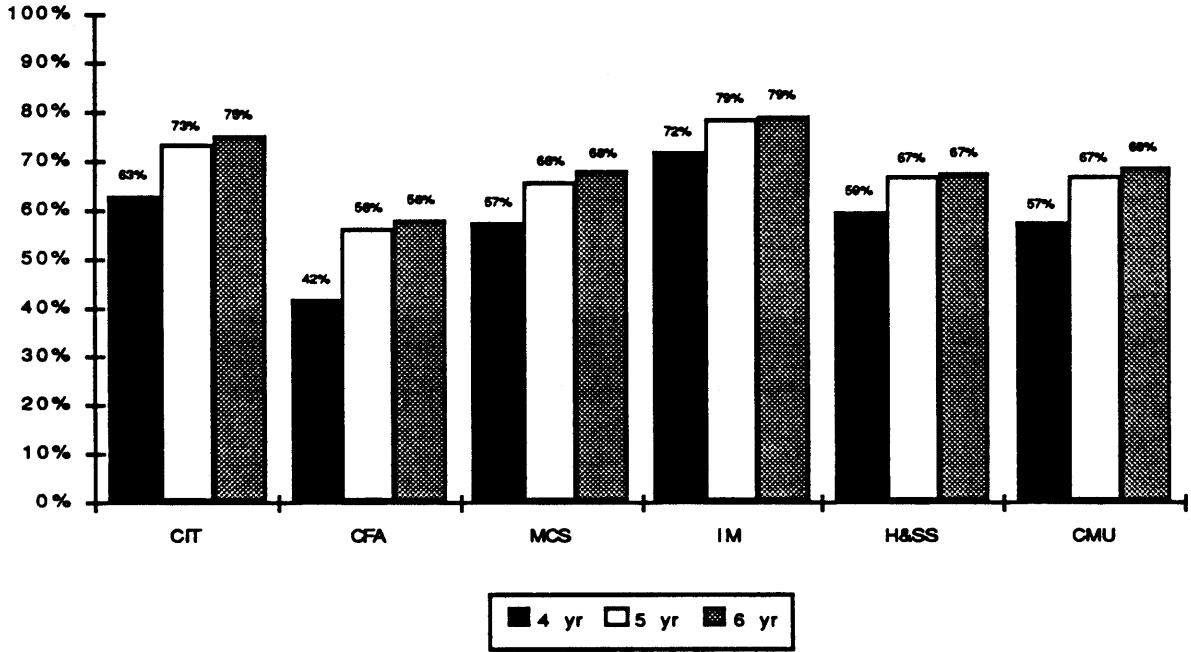
College	Status	1987			1988			1989		
		Underg.	Grad.	Total	Underg.	Grad.	Total	Underg.	Grad.	Total
CIT	Headcount									
	Full	1,238	493	1,731	1,189	473	1,662	1,201	446	1,647
	Part	38	131	169	33	125	158	40	108	148
	Total	1,276	624	1,900	1,222	598	1,820	1,241	554	1,795
FTE	1,245.8	539.5	1,785.3	1,200.3	510.3	1,710.6	1,215.4	482.5	1,697.9	
CFA	Headcount									
	Full	878	87	965	888	90	978	933	84	1,017
	Part	45	59	104	45	64	109	37	81	118
	Total	923	146	1,069	933	154	1,087	970	165	1,135
FTE	906.1	117.3	1,023.4	916.0	121.0	1,037.0	953.4	127.2	1,080.6	
H&SS	Headcount									
	Full	985	119	1,104	1,027	127	1,154	1,031	122	1,153
	Part	31	91	122	40	95	135	46	109	155
	Total	1,016	210	1,226	1,067	222	1,289	1,077	231	1,308
FTE	1,000.8	137.5	1,138.3	1,049.2	145.8	1,195.0	1,057.6	142.4	1,200.0	
IM	Headcount									
	Full	241	0	241	221	0	221	239	0	239
	Part	4	0	4	4	0	4	6	0	6
	Total	245	0	245	225	0	225	245	0	245
FTE	242.9	0.0	242.9	223.3	0.0	223.3	242.8	0.0	242.8	
INI	Headcount									
	Full	0	0	0	0	0	0	0	24	24
	Part	0	0	0	0	0	0	0	0	0
	Total	0	0	0	0	0	0	0	24	24
FTE			0.0			0.0		24.0	24.0	
MCS	Headcount									
	Full	779	193	972	764	184	948	732	204	936
	Part	38	27	65	29	32	61	31	34	65
	Total	817	220	1,037	793	216	1,009	763	238	1,001
FTE	795.6	197.8	993.4	779.3	193.8	973.1	743.0	210.4	953.4	
SCS	Headcount									
	Full	0	161	161	0	155	155	0	180	180
	Part	0	4	4	0	10	10	0	13	13
	Total	0	165	165	0	165	165	0	193	193
FTE	0.0	163.2	163.2	0.0	157.1	157.1	0.0	185.4	185.4	
GSIA	Headcount									
	Full	0	413	413	0	492	492	0	457	457
	Part	0	162	162	0	177	177	0	209	209
	Total	0	575	575	0	669	669	0	666	666
FTE	0.0	492.3	492.3	0.0	579.1	579.1	0.0	568.5	568.5	
SUPA	Headcount									
	Full	12	146	158	19	170	189	0	226	226
	Part	1	326	327	0	326	326	0	291	291
	Total	13	472	485	19	496	515	0	517	517
FTE	13.0	258.8	271.8	19.0	269.1	288.1	0.0	312.7	312.7	
TOTAL*	Headcount									
	Full	4,133	1,612	5,749	4,108	1,691	5,806	4,136	1,743	5,887
	Part	157	800	1,167	151	829	1,187	160	845	1,203
	Total	4,290	2,412	6,916	4,259	2,520	6,993	4,296	2,588	7,090
FTE	4,204.2	1,906.4	6,182.2	4,187.1	1,976.2	6,239.3	4,212.2	2,053.1	6,345.1	

*Total includes Non-Degree Headcount and FTE Enrollment

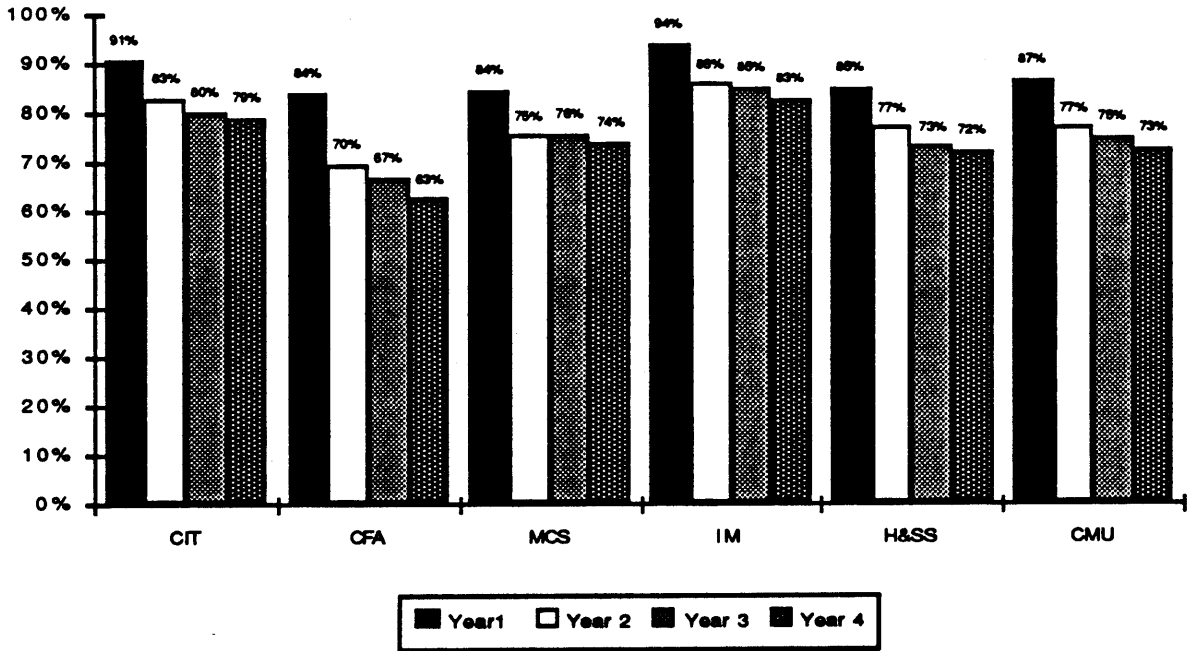
CARNEGIE MELLON UNIVERSITY

Average Within University Graduation and Persistence Rates by College and for CMU

Average Within University Graduation Rate by College and for CMU



Average Within University Persistence Rate by College and for CMU



Notes: Within university rates indicate the proportion of an entering cohort who graduated or persisted by their original college of enrollment regardless of their current or final college.

CARNEGIE MELLON UNIVERSITY

**Total Degrees Granted
By Department and Level
Academic Year 1988-89**

College		Bachelors	Masters	Doctorates	TOTAL
Department					
CIT	Blomed. E.	0	0	0	0
	Chemical E.	44	10	14	68
	Civil E.	14	30	3	47
	E & C E.	121	42	34	197
	E. & P P	0	6	5	11
	Mfg. E.	0	5	0	5
	Mechanical E.	73	33	9	115
	MEMS	25	11	8	44
	Nuclear E.	0	0	2	2
	TOTAL CIT	277	137	75	489
CFA	Architecture	35	22	0	57
	Art	37	3	0	40
	Design	35	2	0	37
	Drama	28	14	0	42
	Music	12	12	0	24
	TOTAL CFA	147	53	0	200
H&SS	Economics	32	0	0	32
	English	52	30	9	91
	History	18	5	10	33
	Philosophy	1	0	0	1
	Psychology	16	9	5	30
	S & D S.	76	0	0	76
	Statistics	0	5	6	11
	Student Defined	8	0	0	8
	TOTAL H&SS	203	49	30	282
	IM	112	0	0	112
MCS	Biology	17	3	4	24
	Chemistry	13	5	8	26
	Math	97	10	7	114
	Physics	29	17	6	52
	TOTAL MCS	156	35	25	216
SCS		0	16	14	30
	GSIA	0	261	8	269
	SUPA	0	186	5	191
	TOTAL	895	737	157	1,789

CARNEGIE MELLON UNIVERSITY

**Total Degrees Granted
By College and Level
Academic Years 1984-85 to 1988-89**

College	Degrees	1984-85	1985-86	1986-87	1987-88	1988-89
CIT	Bachelors	277	271	305	289	277
	Masters	155	131	148	136	137
	Doctorates	58	51	44	61	75
	TOTAL CIT	490	453	497	486	489
CFA	Bachelors	188	152	146	182	147
	Masters	45	47	37	53	53
	Doctorates	0	0	0	1	0
	TOTAL CFA	233	199	183	236	200
H&SS	Bachelors	152	167	160	199	203
	Masters	37	39	48	36	49
	Doctorates	18	19	17	22	30
	TOTAL H&SS	207	225	225	257	282
IM	Bachelors	72	88	94	90	112
	TOTAL IM	72	88	94	90	112
MCS	Bachelors	160	181	205	198	156
	Masters	30	46	36	22	35
	Doctorates	22	26	21	30	25
	TOTAL MCS	212	253	262	250	216
SCS	Masters	4	9	7	12	16
	Doctorates	15	11	11	15	14
	TOTAL CS	19	20	18	27	30
GSIA	Masters	134	129	152	186	261
	Doctorates	10	5	13	10	8
	TOTAL GSIA	144	134	165	196	269
SUPA	Masters	92	150	177	157	186
	Doctorates	2	3	4	4	5
	TOTAL SUPA	94	153	181	161	191
CMU	Bachelors	849	859	910	958	895
	Masters	497	551	605	602	737
	Doctorates	125	115	110	143	157
	TOTAL	1,471	1,525	1,625	1,703	1,789

TEACHING AND ACADEMIC SUPPORT

CARNEGIE MELLON UNIVERSITY

**Units Taught
By Department, Semester and Level
Academic Year 1988-89**

College	Department	Fall Semester				Spring Semester				YEAR TOTAL
		Underg.	Grad.	Other	Total	Underg.	Grad.	Other	Total	
CIT	Biomedical E.	573	21	0	594	597	57	9	663	1,257
	Chemical E.	2,919	2,838	0	5,757	1,902	2,711	0	4,613	10,370
	Civil E.	2,529	2,159	12	4,700	2,298	1,876	78	4,252	8,952
	E & C E.	8,613	10,018	255	18,886	9,642	9,589	229	19,460	38,346
	EPP	2,298	929	0	3,227	2,349	809	18	3,176	6,403
	Mechanical E.	7,390	2,766	54	10,210	5,219	2,859	42	8,120	18,330
	MEMS	1,738	2,832	42	4,612	2,787	2,654	9	5,450	10,062
	Nuclear E.	0	5	0	5	0	0	0	0	5
	Mfg. E.	1,610	258	9	1,877	698	99	0	797	2,674
TOTAL CIT	27,670	21,826	372	49,868	25,492	20,654	385	46,531	96,399	
CFA	Architecture	9,036	2,188	12	11,236	7,374	1,857	18	9,249	20,485
	Art	9,276	402	104	9,782	9,349	462	174	9,985	19,767
	Design	7,851	0	69	7,920	7,320	126	60	7,506	15,426
	Drama	7,516	1,554	13	9,083	7,297	1,429	13	8,739	17,822
	Music	6,633	861	54	7,548	7,226	888	36	8,150	15,698
	Interdiscp.	1,296	93	27	1,416	1,344	36	69	1,449	2,865
	TOTAL CFA	41,608	5,098	279	46,985	39,910	4,798	370	45,078	92,063
H&SS	English	12,201	2,048	231	14,480	13,191	1,639	279	15,109	29,589
	History	15,614	1,452	378	17,444	14,458	1,146	378	15,982	33,426
	Philosophy	4,953	192	81	5,226	4,329	219	249	4,797	10,023
	Psychology	8,259	1,552	180	9,991	6,825	1,365	153	8,343	18,334
	S & D S.	7,341	235	120	7,696	6,849	218	69	7,136	14,832
	Statistics	6,006	1,593	57	7,656	4,407	1,503	66	5,976	13,632
	Interdiscp.	0	0	0	0	459	9	18	486	486
TOTAL H&SS	54,374	7,072	1,047	62,493	50,518	6,099	1,212	57,829	120,322	
MCS	Biology	3,299	1,686	36	5,021	2,735	1,595	27	4,357	9,378
	Chemistry	9,109	1,816	21	10,946	6,381	1,805	34	8,220	19,166
	Math	19,724	1,867	122	21,713	16,080	1,611	154	17,845	39,558
	Physics	11,919	2,458	50	14,427	9,565	2,095	81	11,741	26,168
	Interdiscp.	0	0	0	0	18	9	0	27	27
TOTAL MCS	44,051	7,827	229	52,107	34,779	7,115	296	42,190	94,297	
SCS		7,144	6,335	232	13,711	9,694	6,246	264	16,204	29,915
GSIA	Economics	8,724	27	36	8,787	8,313	54	18	8,385	17,172
	IM	8,394	27	135	8,556	11,277	36	144	11,457	20,013
	GSIA	96	33,157	120	33,373	96	27,719	144	27,959	61,332
	TOTAL GSIA	17,214	33,211	291	50,716	19,686	27,809	306	47,801	98,517
SUPA		1,059	14,183	78	15,320	978	13,964	66	15,008	30,328
OTHER		5,595	135	137	5,867	3,793	341	299	4,433	10,300
TOTAL		198,715	95,687	2,665	297,067	184,850	87,026	3,198	275,074	572,141

CARNEGIE MELLON UNIVERSITY

**Units Taught
By College and Level
Academic Years 1984-85 to 1988-89**

College	Level	1984-85	1985-86	1986-87	1987-88	1988-89
CIT	Undergraduate	59,908	60,179	60,749	57,793	53,162
	Graduate	38,722	41,359	44,342	44,425	42,480
	Other	1,033	1,117	803	982	757
	TOTAL CIT	99,663	102,655	105,894	103,200	96,399
CFA	Undergraduate	68,303	67,801	70,368	80,914	81,518
	Graduate	9,765	9,924	9,978	9,404	9,896
	Other	471	564	683	490	649
	TOTAL CFA	78,539	78,289	81,029	90,808	92,063
H&SS	Undergraduate	97,935	100,705	104,656	103,590	104,892
	Graduate	10,337	10,441	10,597	12,773	13,171
	Other	1,394	1,626	1,920	1,963	2,259
	TOTAL H&SS	109,666	112,772	117,173	118,326	120,322
MCS	Undergraduate	91,296	91,478	85,784	79,180	78,830
	Graduate	17,048	17,890	16,571	15,895	14,942
	Other	852	789	583	575	525
	TOTAL MCS	109,196	110,157	102,938	95,650	94,297
SCS	Undergraduate	18,371	19,430	20,568	17,584	16,838
	Graduate	9,509	10,219	11,230	12,896	12,581
	Other	726	541	736	562	496
	TOTAL CS	28,606	30,190	32,534	31,042	29,915
GSIA	Undergraduate	34,554	37,347	36,483	38,223	36,900
	Graduate	32,190	37,480	40,674	50,693	61,020
	Other	507	294	540	531	597
	TOTAL GSIA	67,251	75,121	77,697	89,447	98,517
SUPA	Undergraduate	741	480	738	1,254	2,037
	Graduate	24,519	27,885	26,295	26,180	28,147
	Other	111	288	333	207	144
	TOTAL SUPA	25,371	28,653	27,366	27,641	30,328
OTHER	Undergraduate	3,546	8,199	7,487	7,825	9,388
	Graduate	210	241	222	331	476
	Other	60	164	159	173	436
	TOTAL OTHER	3,816	8,604	7,868	8,329	10,300
CMU	Undergraduate	374,654	385,619	386,833	386,363	383,565
	Graduate	142,300	155,439	159,909	172,597	182,713
	Other	5,154	5,383	5,757	5,483	5,863
TOTAL		522,108	546,441	552,499	564,443	572,141

CARNEGIE MELLON UNIVERSITY

Academic Computing Statistics Fiscal Years 1986 and 1989

	1986	1989
Computer Users (ID's)		
Andrew	3,100	7,000
Vax	2,300	1,800
Number of Computers in Public Clusters		
IBM	146	74
Macintoshes	77	149
Workstations	66	119
Total Clusters	289	342
Network Connections		
Number Available	9,500	12,500
Number Active		
Token Ring	800	1,300
Phonenet(Mac)	0	1,200
Ethernet	1,000	1,500
Asynchronous	3,000	3,000
Total Active	4,800	7,000
PC Store Sales		
IBM	258	114
Apple	899	1,118
Workstations	52	14
Total Sales	1,209	1,246

Carnegie Mellon Computing Environment Academic Year 1989-90

Carnegie Mellon has probably the finest computing environment of any university in the United States, built around the general theme of personal computers with a network which provides access to shared information. The university has approximately 9,000 personal computers. The principal types are Unix workstations, Apple Macintoshes, IBM PCs, and VMS workstations. These are linked to the ubiquitous campus network, which provides Ethernet, token ring, and AppleTalk services in almost every room of every building owned by the university. There are 12,500 network outlets of which some 4,800 are currently active. The university is a major hub of the national NSFNet. Shared information is provided through network services which include: several Andrew file systems which are approaching 100 gigabytes of online storage, electronic mail, more than 2,000 bulletin boards, the Library Information Service, administrative data bases, and close connections to the Pittsburgh Supercomputer Center. Some 342 personal computers and workstations are available in public clusters with an equal number provided by departments.

CARNEGIE MELLON UNIVERSITY

**Academic Services Statistics
Library and Instructional Technology Collections and Utilization.
Fiscal Years 1988 and 1989**

	1988	1989
Library Holdings		
Books, Bound Serials and Government Documents*	716,403	740,482
Current Subscriptions--Periodicals, Newspapers and Government Documents	3,332	4,315
Microforms--Books, Serial Titles, Government Documents	498,974	544,144
Graphic Materials--Art Reproductions (Mounted and Unmounted), Slides*	171,525	173,870
Audio Materials--Cassettes, Phonograph Records, Compact Discs, Tapes	12,319	12,558
Video Materials	547	937
Machine Readable Materials	240	285
Music Scores	25,070	26,135

*number of volumes/units

	1988	1989
Instructional Technology Use		
Photocopies Made in Libraries	2,003,566	2,023,698
Microform Copies Made in Libraries	94,589	141,806
Video Tapes Viewed	3,274	8,115
Data Projector Requests	410	681
Total Equipment Orders	2,418	3,483

	1989
Number of Visits to the Libraries	
Engineering and Science Library	220,487
Hunt Library	650,184
Mellon Institute Library	6,182

Computerized Library Resources Fiscal Year 1989

LS/2000 is a computerized catalog and circulation system that provides online access to the majority of the libraries' holdings for books, journals, technical reports, government documents, musical scores, sound recordings and educational software. The LIS contains 14 online databases on a variety of topics.

	Number of Searches Performed Fiscal Year 89	Number of Database Records June 30 1989
LS/2000	502,249	N/A
LIS--14 databases: *		
Announcements **	702	1
ArchPics	2,132	4,058
Bibliographies	2,106	240
Computer Database	15,157	128,962
Dictionary	23,898	83,713
Encyclopedia	46,188	44,097
ICPSR Guide	849	1,333
Journal List	26,679	8,336
Library Catalog	235,284	330,862
Magazine Index	53,202	1,043,175
Management Contents	6,380	36,849
Newspaper Index	16,992	718,183
Trade & Industry	8,777	802,737
Who's Who at CMU ***	26,204	10,437
TOTAL	464,550	3,212,983

* Number of Searches Performed from Oct.88-June 89

** Introduced in May 1989

*** Introduced in February 1989

CARNEGIE MELLON UNIVERSITY

Teaching Additional Facts and Figures

Units Taken at PCHE Colleges* by CMU Students, by Level and College Units Taught to PCHE Students, by College Academic Year 1988-89

Major/College	Units Taken			Units Taught
	Undergraduate	Graduate	Total	
CIT	252	114	366	147
CFA	238	144	382	122
H&SS	715	123	838	564
MCS	399	27	426	183
IM	75	0	75	---
SCS	0	18	18	79
GSIA	0	26	26	114
SUPA	18	54	72	48
OTHER	---	---	---	58
TOTAL	1,697	506	2,203	1,315

Pittsburgh Council of Higher Education (PCHE) Colleges:

Allegheny Community College
Carlow College
Chatham College

Duquesne University
La Roche College
Point Park College

Pittsburgh Theological Sem.
Robert Morris College
University of Pittsburgh

The University Teaching Center

The University Teaching Center, initiated in January 1982, conducts eleven programs. Most of these are conducted by faculty members, assisted by Center personnel. The programs are as follows.

For Faculty Members:

- Incoming faculty orientation.
- Faculty Luncheon Seminars on Teaching--six to eight each fall.
- Videotaping services--providing taping and confidential critiques of classroom teaching.
- Assistance to faculty members in obtaining feedback from students.
- Consultations about Faculty Course Evaluations.
- Trouble shooting.
- A publication series on University Teaching.
- Supervision of the Educational Facilities Committee which oversees classroom renovations.

For Graduate Students:

- Workshops for Teaching Assistants.
- Assistance to departments which are developing teaching components of Ph.D. programs.

FACULTY

CARNEGIE MELLON UNIVERSITY

**Total Headcount Faculty
By Department, Category, and Status
Fall Semester 1989**

College	Department	Regular	Research	Special Faculty*			TOTAL FACULTY
		Faculty	Faculty	Full	Part	Total	
CIT	Biomedical E.	1.00	0.00	0.00	2.00	2.00	3.00
	Chemical E.	16.50	1.00	5.00	2.00	7.00	24.50
	Civil E.	15.00	1.00	1.00	1.00	2.00	18.00
	E & C E.	31.70	1.00	9.00	0.00	9.00	41.70
	EPP	10.15	0.00	7.00	1.00	8.00	18.15
	Mechanical E.	20.60	0.00	7.00	1.00	8.00	28.60
	MEMS	16.50	1.00	23.00	3.00	26.00	43.50
	EDRC	0.00	5.00	5.00	1.00	6.00	11.00
	Dean's Ofc.	0.00	0.00	0.00	0.00	0.00	0.00
	TOTAL CIT	111.45	9.00	57.00	11.00	68.00	188.45
CFA	Architecture	22.50	0.00	2.00	13.00	15.00	37.50
	Art	17.00	0.00	4.00	6.00	10.00	27.00
	Design	14.00	0.00	2.00	7.00	9.00	23.00
	Drama	20.27	0.00	8.00	3.00	11.00	31.27
	Music	17.27	0.00	8.00	39.00	47.00	64.27
	Pre-Col Art	0.00	0.00	0.00	14.00	14.00	14.00
	Pre-Col Music	0.00	0.00	0.00	21.00	21.00	21.00
	SFCI	0.00	0.00	2.00	0.00	2.00	2.00
	Dean's Ofc.	0.00	0.00	2.00	2.00	4.00	4.00
	TOTAL CFA	91.04	0.00	28.00	105.00	133.00	224.04
H&SS	English	26.00	0.00	3.00	4.00	7.00	33.00
	History	20.75	0.00	0.00	0.00	0.00	20.75
	Mod. Lang.	1.00	0.00	5.00	4.00	9.00	10.00
	Philosophy	9.00	0.00	5.00	7.00	12.00	21.00
	Psychology	18.50	0.50	16.00	4.00	20.00	39.00
	S & D S.	15.00	0.00	2.00	4.00	6.00	21.00
	Statistics	9.50	0.00	3.00	2.00	5.00	14.50
	Dean's Ofc.	0.50	0.50	3.00	0.00	3.00	4.00
TOTAL H&SS	100.25	1.00	37.00	25.00	62.00	163.25	
MCS	Biology	19.50	7.00	31.00	0.00	31.00	57.50
	Chemistry	20.00	0.00	23.00	1.00	24.00	44.00
	Math	24.50	0.00	7.00	0.00	7.00	31.50
	Physics	31.80	0.00	15.00	0.00	15.00	46.80
	Dean's Ofc.	0.50	0.00	0.00	2.00	2.00	2.50
	TOTAL MCS	96.30	7.00	76.00	3.00	79.00	182.30
SCS	Comp. Sci.	33.00	17.50	27.00	0.00	27.00	77.50
	Robotics	3.00	15.50	8.00	1.00	9.00	27.50
	CMT	0.00	2.00	1.00	0.00	1.00	3.00
	TOTAL SCS	36.00	35.00	36.00	1.00	37.00	108.00
GSIA	70.42	0.00	14.00	11.00	25.00	95.42	
SUPA	21.54	1.00	5.00	15.00	20.00	42.54	
CMIR	0.00	2.00	1.00	1.00	2.00	4.00	
OTHER	13.00	0.00	3.00	1.00	4.00	17.00	
TOTAL	540.00	55.00	257.00	173.00	430.00	1,025.00	

*Includes special teaching, special research and visiting faculty.

CARNEGIE MELLON UNIVERSITY

**Full-Time Regular Faculty
By Rank and Department
Fall Semester 1989**

		University	Associate	Assistant				
		Professor	Professor	Professor	Instructor			TOTAL
College	Department							
CIT	Biomedical E	0.00	1.00	0.00	0.00	0.00		1.00
	Chemical E.	0.00	10.00	4.50	2.00	0.00		16.50
	Civil E.	1.00	6.00	3.00	5.00	0.00		15.00
	E & C E.	0.00	17.70	9.00	5.00	0.00		31.70
	EPP	0.00	3.90	4.75	1.50	0.00		10.15
	Mechanical E	0.00	10.10	4.00	6.50	0.00		20.60
	MEMS	1.00	9.50	4.00	2.00	0.00		16.50
	Dean's Ofc.	0.00	0.00	0.00	0.00	0.00		0.00
	TOTAL CIT		2.00	58.20	29.25	22.00	0.00	
CFA	Architecture	0.00	8.00	6.50	6.00	2.00		22.50
	Art	0.00	8.00	8.00	1.00	0.00		17.00
	Design	0.00	2.00	7.00	5.00	0.00		14.00
	Drama	0.00	6.00	4.00	9.00	1.27		20.27
	Music	1.00	6.00	6.00	4.00	0.27		17.27
	Dean's Ofc.	0.00	0.00	0.00	0.00	0.00		0.00
	TOTAL CFA		1.00	30.00	31.50	25.00	3.54	
H&SS	English	0.00	9.00	9.00	8.00	0.00		26.00
	History	0.00	8.25	7.00	5.50	0.00		20.75
	Mod. Lang.	0.00	1.00	0.00	0.00	0.00		1.00
	Philosophy	0.00	4.00	2.00	3.00	0.00		9.00
	Psychology	1.00	11.00	5.00	1.50	0.00		18.50
	S & D S.	0.50	3.00	8.00	3.50	0.00		15.00
	Statistics	1.00	3.50	3.00	2.00	0.00		9.50
	Dean's Ofc.	0.00	0.50	0.00	0.00	0.00		0.50
TOTAL H&SS		2.50	40.25	34.00	23.50	0.00		100.25
MCS	Biology	0.00	8.50	6.00	5.00	0.00		19.50
	Chemistry	1.00	11.00	4.00	4.00	0.00		20.00
	Math	0.00	15.50	3.00	6.00	0.00		24.50
	Physics	1.00	21.80	4.00	5.00	0.00		31.80
	Dean's Ofc.	0.00	0.50	0.00	0.00	0.00		0.50
TOTAL MCS		2.00	57.30	17.00	20.00	0.00		96.30
SCS	Comput. Sci.	3.00	7.50	10.50	12.00	0.00		33.00
	Robotics	0.00	1.00	1.50	0.50	0.00		3.00
	TOTAL SCS	3.00	8.50	12.00	12.50	0.00		36.00
GSIA		2.00	21.17	12.25	32.00	3.00		70.42
SUPA		0.50	7.58	4.00	9.00	0.46		21.54
OTHER		0.00	12.00	1.00	0.00	0.00		13.00
TOTAL		13.00	235.00	141.00	144.00	7.00		540.00

CARNEGIE MELLON UNIVERSITY

**Full-Time Regular Faculty
By Tenure Status and Department
Fall Semester 1989**

College		Tenured	Tenure Stream	Instructors	TOTAL
Department					
CIT	Biomedical E.	1.00	0.00	0.00	1.00
	Chemical E.	10.00	6.50	0.00	16.50
	Civil E.	7.50	7.50	0.00	15.00
	E & C E.	17.70	14.00	0.00	31.70
	EPP	4.65	5.50	0.00	10.15
	Mechanical E.	9.10	11.50	0.00	20.60
	MEMS	10.50	6.00	0.00	16.50
	Dean's Ofc.	0.00	0.00	0.00	0.00
	TOTAL CIT	60.45	51.00	0.00	111.45
CFA	Architecture	8.50	12.00	2.00	22.50
	Art	14.00	3.00	0.00	17.00
	Design	5.00	9.00	0.00	14.00
	Drama	6.00	13.00	1.27	20.27
	Music	8.00	9.00	0.27	17.27
	Dean's Ofc.	0.00	0.00	0.00	0.00
	TOTAL CFA	41.50	46.00	3.54	91.04
H&SS	English	15.00	11.00	0.00	26.00
	History	14.25	6.50	0.00	20.75
	Mod. Lang.	1.00	0.00	0.00	1.00
	Philosophy	4.00	5.00	0.00	9.00
	Psychology	16.00	2.50	0.00	18.50
	S & D S.	7.50	7.50	0.00	15.00
	Statistics	5.50	4.00	0.00	9.50
	Dean's Ofc.	0.50	0.00	0.00	0.50
	TOTAL H&SS	63.75	36.50	0.00	100.25
MCS	Biology	13.50	6.00	0.00	19.50
	Chemistry	15.00	5.00	0.00	20.00
	Math	17.50	7.00	0.00	24.50
	Physics	23.80	8.00	0.00	31.80
	Dean's Ofc.	0.50	0.00	0.00	0.50
	TOTAL MCS	70.30	26.00	0.00	96.30
SCS	Comp. Sci.	14.00	19.00	0.00	33.00
	Robotics	1.50	1.50	0.00	3.00
	TOTAL SCS	15.50	20.50	0.00	36.00
GSIA		28.42	39.00	3.00	70.42
SUPA		10.08	11.00	0.46	21.54
OTHER		12.00	1.00	0.00	13.00
TOTAL		302.00	231.00	7.00	540.00

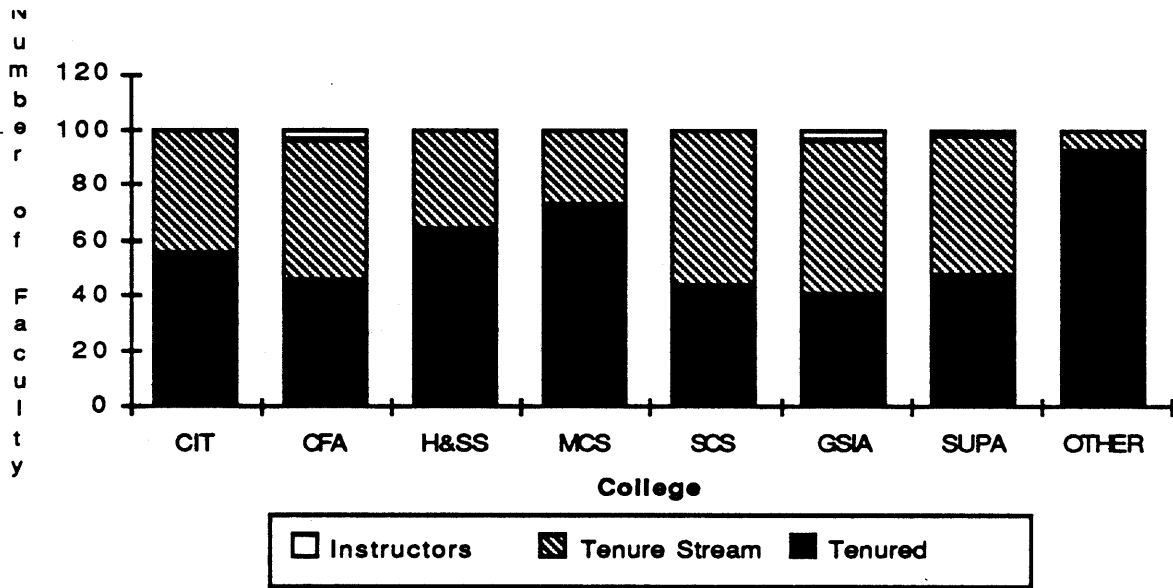
CARNEGIE MELLON UNIVERSITY

**Full-Time Regular Faculty
By College and Tenure Status
Fall Semesters 1985 to 1989**

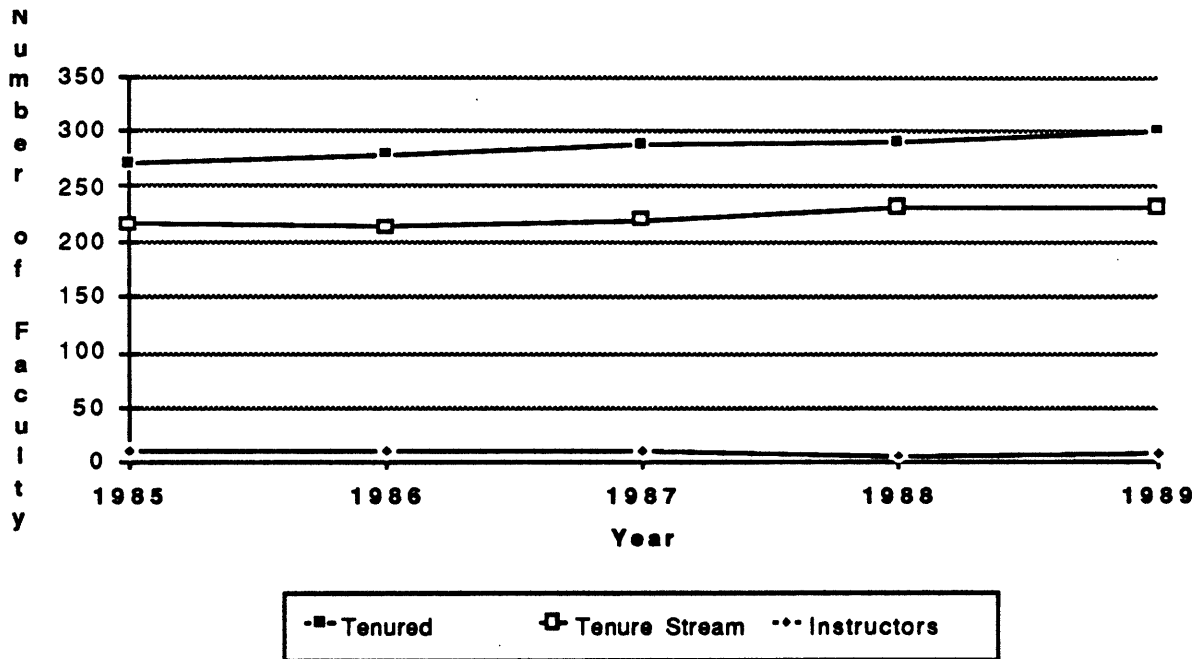
College		1985	1986	1987	1988	1989
	Tenure Status					
CIT	Tenured	52.75	58.95	57.95	59.95	60.45
	Tenure Stream	48.5	41.50	42.50	49.00	51.00
	Instructors	0.00	0.00	0.00	0.00	0.00
	Total	101.25	100.45	100.45	108.95	111.45
CFA	Tenured	35.50	35.50	38.50	39.50	41.50
	Tenure Stream	38.00	41.00	45.00	49.00	46.00
	Instructors	4.00	3.00	5.00	2.00	3.54
	Total	77.50	79.50	88.50	90.50	91.04
H&SS	Tenured	56.00	59.50	62.50	58.75	63.75
	Tenure Stream	47.25	44.75	42.75	39.00	36.50
	Instructors	3.00	0.00	0.00	0.00	0.00
	Total	106.25	104.25	105.25	97.75	100.25
MCS	Tenured	69.75	68.55	69.55	70.30	70.30
	Tenure Stream	19.00	19.00	24.00	22.00	26.00
	Instructors	0.00	0.00	0.00	0.00	0.00
	Total	88.75	87.55	93.55	92.30	96.30
SCS	Tenured	9.50	13.70	13.70	16.50	15.50
	Tenure Stream	15.50	17.00	17.50	18.50	20.50
	Instructors	0.00	0.00	0.00	0.00	0.00
	Total	25.00	30.70	31.20	35.00	36
GSIA	Tenured	22.25	20.25	25.42	27.42	28.42
	Tenure Stream	33.67	37.67	34.50	39.50	39.00
	Instructors	3.00	6.00	4.00	2.00	3.00
	Total	58.92	63.92	63.92	68.92	70.42
SUPA	Tenured	10.00	8.50	7.33	7.58	10.08
	Tenure Stream	12.33	12.33	12.50	14.00	11.00
	Instructors	0.00	1.00	0.00	1.00	0.46
	Total	22.33	21.83	19.83	22.58	21.54
OTHER	Tenured	15.25	14.05	13.05	10.00	12.00
	Tenure Stream	0.75	0.75	1.25	1.00	1.00
	Instructors	0.00	0.00	0.00	0.00	0.00
	Total	16.00	14.80	14.30	11.00	13.00
CMU	Tenured	271.00	279.00	288.00	290.00	302.00
	Tenure Stream	215.00	214.00	220.00	232.00	231.00
	Instructors	10.00	10.00	9.00	5.00	7.00
	Total	496.00	503.00	517.00	527.00	540.00

CARNEGIE MELLON UNIVERSITY

**Full-Time Regular Faculty
By Tenure Status and College
Fall Semester 1989**

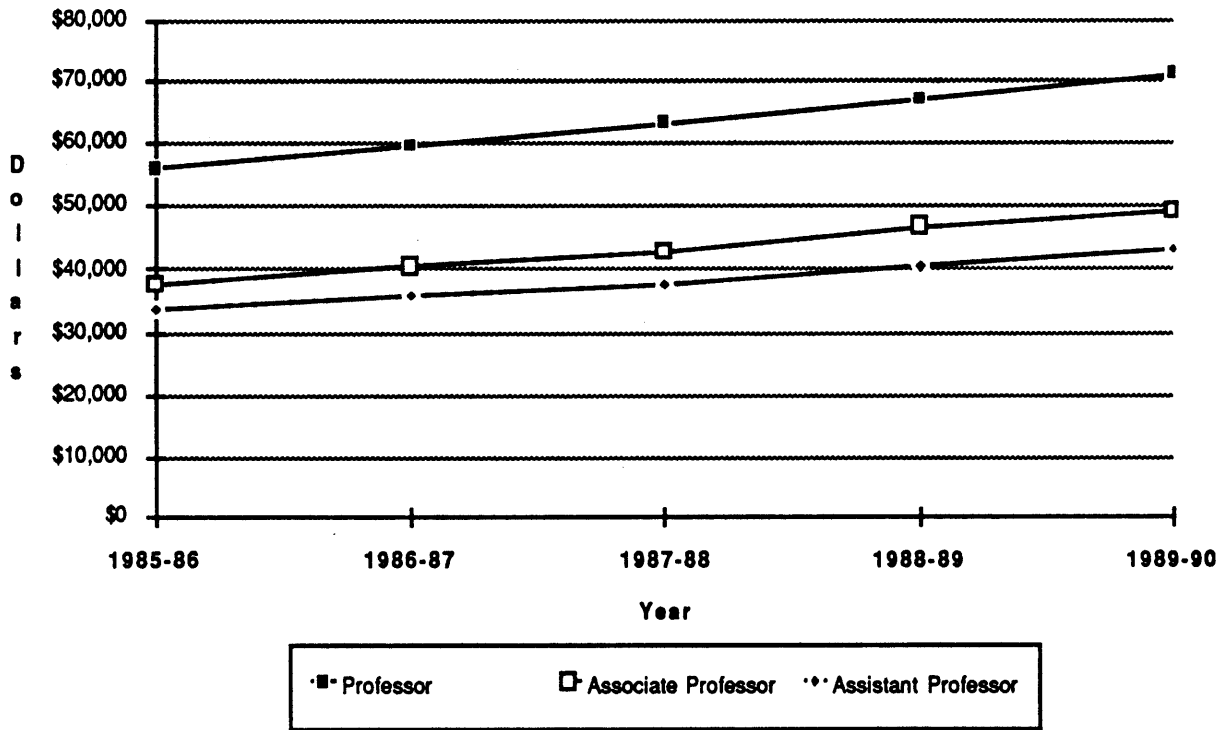


**Full Time Regular Faculty
By Tenure Status
Fall Semesters 1985 to 1989**



CARNEGIE MELLON UNIVERSITY

**Average Faculty Salaries
Full-Time Regular Faculty
Academic Years 1985-86 to 1989-90**



Average Salaries	1985-86	1986-87	1987-88	1988-89	1989-90
Professor	\$55,800	\$59,600	\$63,400	\$67,026	\$70,900
Associate Professor	37,900	40,500	42,800	46,900	49,300
Assistant Professor	33,400	36,100	37,800	40,500	43,200

Source: AAUP Salary Survey

CARNEGIE MELLON UNIVERSITY

Regular Faculty Additional Facts and Figures

Distribution by Sex, Race and Age Fall 1989

Percent of Faculty by Sex

Male	84%
Female	16%

Percent of Faculty by Race

Asian	3%
Black	1%
Hispanic	1%
White	77%
Non-U.S. Citizen	18%

Percent of Faculty by Age

Under 30	3%
30 to 40	39%
40 to 50	29%
50 to 60	18%
Over 60	11%

Top Ten Institutions Granting Degrees to Faculty Fall 1988

Carnegie Mellon University	Harvard University
Stanford University	Cornell University
Massachusetts Institute of Technology	California Institute of Technology
University of California, Berkeley	University of Wisconsin
University of Michigan	University of Minnesota
Yale University	

50% of the Regular Faculty received degrees from the above institutions.

84% of the Regular Faculty hold Ph.D's from any institution.

Percent Change in Faculty Salaries By Rank Fall 1984 to Fall 1988

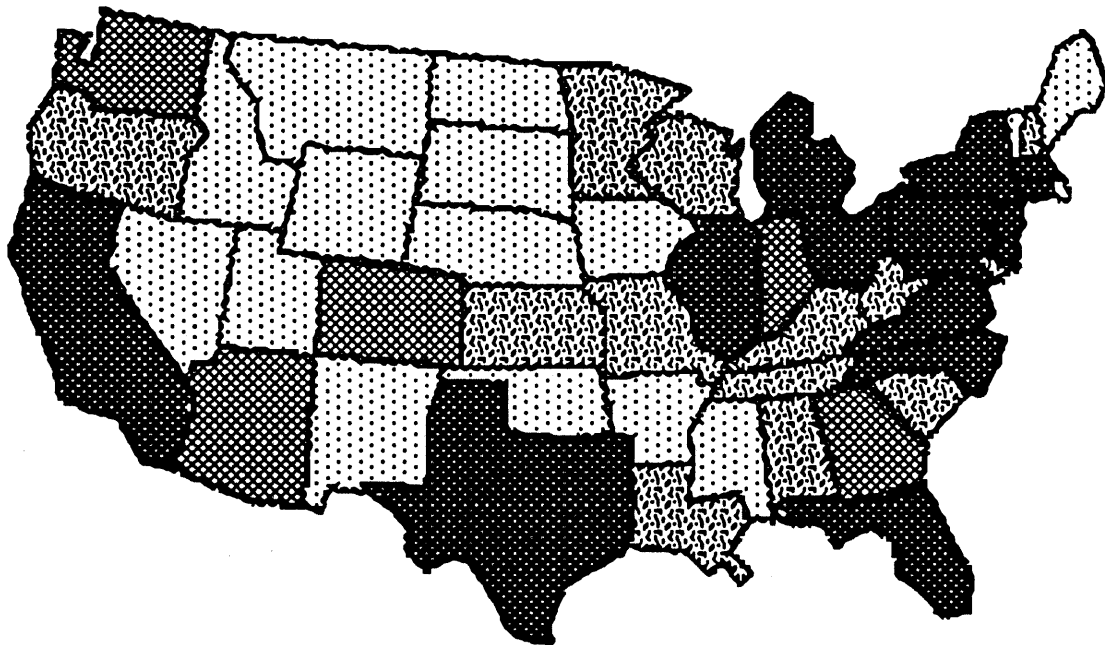
	Prof. %	Assoc. %	Asst. %
Carnegie Mellon	29 (7)	34 (2)	32 (6)*
U. of Wisconsin	34	36	33
U. of Michigan	31	33	33
U. of Pennsylvania	30	32	33
Northwestern	30	34	31
Yale	30	33	30
Case Western	30	24	22
MIT	29	30	30
Rice	29	23	28
Purdue	28	26	27
Stanford	28	32	31
Washington U.	27	25	25
Cornell	27	27	34
U. of CA, Berkeley	26	29	30
RPI	26	23	28
Harvard	26	27	28
Lehigh	23	24	34

* CMU Rank

ALUMNI

CARNEGIE MELLON UNIVERSITY

**Alumni
By Region and State
Through August 1989**



Region / State	Region / State	Region / State	Region / State
New England	South	Midwest	West
Connecticut	963	Alabama	130
Maine	106	Florida	1,458
Massachusetts	1,608	Georgia	389
New Hampshire	201	Kentucky	149
Rhode Island	98	Louisiana	129
Vermont	97	Mississippi	34
TOTAL	3,073	North Carolina	632
Percent of Total	6%	South Carolina	286
		Tennessee	246
		Virginia	1,317
		TOTAL	4,770
Middle States		Percent of Total	10%
Delaware	261	Southwest	
District of Columbia	323	Arkansas	43
Maryland	1,694	New Mexico	146
New Jersey	2,098	Oklahoma	88
New York	3,924	Texas	1,030
Pennsylvania	14,284	TOTAL	1,307
TOTAL	22,584	Percent of Total	3%
Percent of Total	47%		
		Illinois	1,072
		Indiana	351
		Iowa	64
		Kansas	110
		Michigan	807
		Minnesota	242
		Missouri	247
		Nebraska	29
		North Dakota	6
		Ohio	2,297
		South Dakota	13
		West Virginia	277
		Wisconsin	228
		TOTAL	5,743
		Percent of Total	12%
		Alaska	17
		Arizona	357
		California	3,938
		Colorado	373
		Hawaii	68
		Idaho	54
		Montana	14
		Nevada	46
		Oregon	190
		Utah	54
		Washington	362
		Wyoming	18
		TOTAL	5,491
		Percent of Total	11%
		U.S. TOTAL	42,968
		Percent of Total	89%
		Unknown	3,910
		Foreign Countries	1,438
		TOTAL	48,316

FINANCES

CARNEGIE MELLON UNIVERSITY

**Tuition and Fees
Academic Years 1985-86 to 1989-90**

	1985-86	1986-87	1987-88	1988-89	1989-90
Undergraduate Tuition	\$9,400	\$10,250	\$11,100	\$12,000	\$13,000
Graduate Tuition					
CFA	\$10,000	\$10,500	\$11,200	\$12,000	\$12,000
CIT	10,000	11,000	11,850	12,750	13,750
H&SS	10,000	10,500	11,200	12,000	12,000
MCS	10,000	10,750	11,500	12,300	13,000
CS	10,000	11,000	11,850	12,750	13,750
ROBOTICS					13,750
GSIA	10,608	11,628	12,648	13,566	15,200
SUPA	10,000	11,000	11,900	12,400	13,400
Student Activities Fee	\$60	\$60	\$60	\$80	\$80

**Room and Board
Academic Years 1985-86 to 1989-90**

	1985-86	1986-87	1987-88	1988-89	1989-90
Average Room (Standard Double)	\$2,080	\$2,170	\$2,280	\$2,440	\$2,610
Average Board (19 Meals/Week)	\$1,425	\$1,503	\$1,548	\$1,650	\$1,832

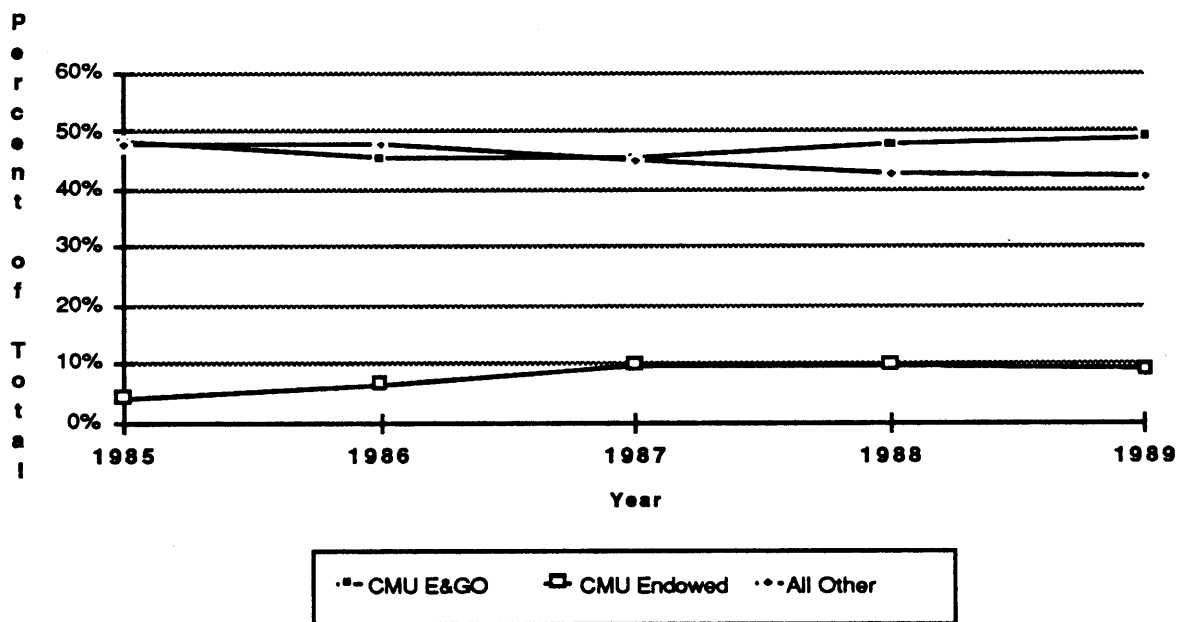
**Total Estimated Cost of Attending CMU
Academic Years 1985-86 to 1989-90**

	1985-86	1986-87	1987-88	1988-89	1989-90
Resident	\$14,300	\$15,300	\$16,300	\$17,650	\$18,800
Commuter	\$11,100	\$12,300	\$13,150	\$14,350	\$15,300

Cost includes: tuition and activities fee, books and supplies, incidentals, room and board for residents and lunches and transportation for commuters.

CARNEGIE MELLON UNIVERSITY

**Undergraduate Scholarships & Grants
By Source, Percent of Total
Fiscal Years 1985 to 1989**



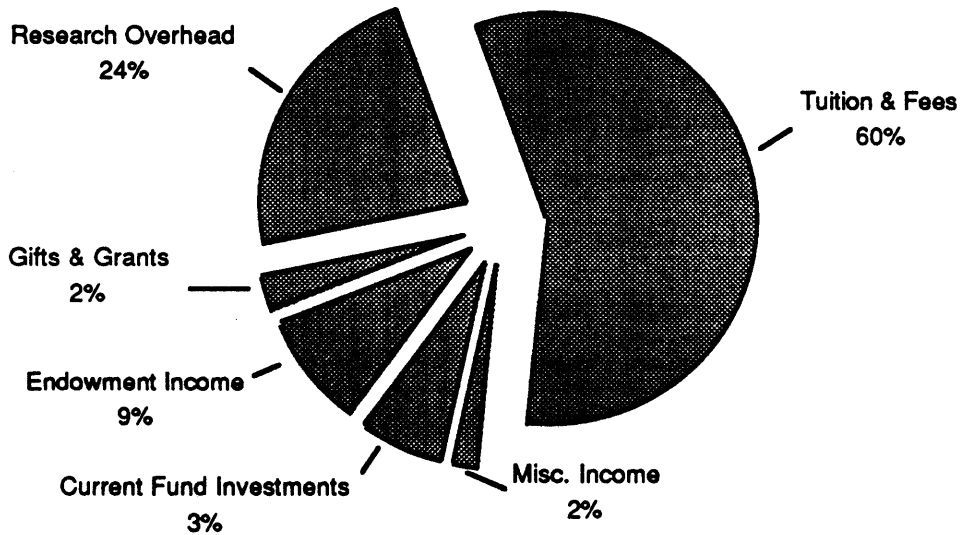
All Other includes Federal, State and Other Grant Resources.

**Undergraduate Financial Aid Resources
By Source
Fiscal Years 1985 to 1989
(Dollars in Thousands)**

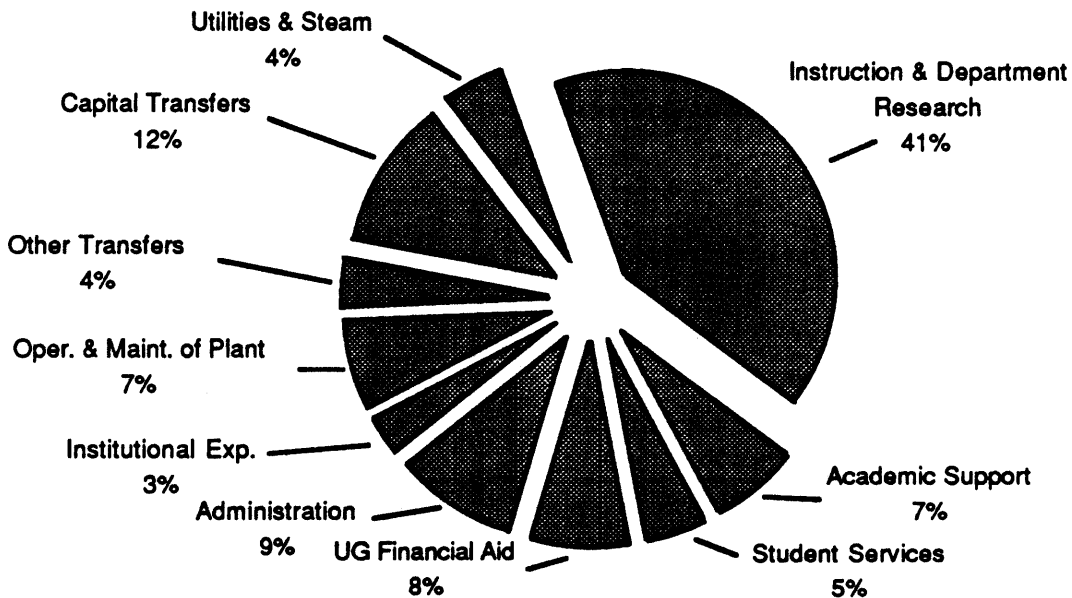
	1985	1986	1987	1988	1989
Scholarships & Grants					
Federal - PELL	\$942	\$1,025	\$726	\$801	\$1,041
Federal - SEOG	1,641	1,641	1,641	1,641	\$1,471
State - PHEAA	1,107	1,178	1,223	1,198	\$1,301
Other State Grants	157	167	175	159	\$165
CMU E&GO	5,289	6,129	6,777	7,542	\$8,325
CMU Endowed	477	889	1,440	1,559	\$1,538
CMU Gifts and Grants	140	169	342	280	\$311
ROTC	694	890	954	975	\$1,257
Other Grant Resources	574	1,370	1,706	1,694	\$1,654
TOTAL	\$11,021	\$13,458	\$14,984	\$15,849	\$17,063
Self-Help					
Workstudy	\$1,739	\$2,001	\$1,932	\$1,938	\$1,691
Loans	8,774	8,693	8,528	8716	\$7,908
TOTAL	\$10,513	\$10,694	\$10,460	\$10,654	\$9,599
TOTAL	\$21,534	\$24,152	\$25,444	\$26,503	\$26,662
% of Undergraduates with Need	62.2%	63.0%	62.0%	62.0%	63.5%

CARNEGIE MELLON UNIVERSITY

**Distribution of Educational and General Operating (E&GO) Income
Fiscal Year 1989
(Total = \$106,869,000)**

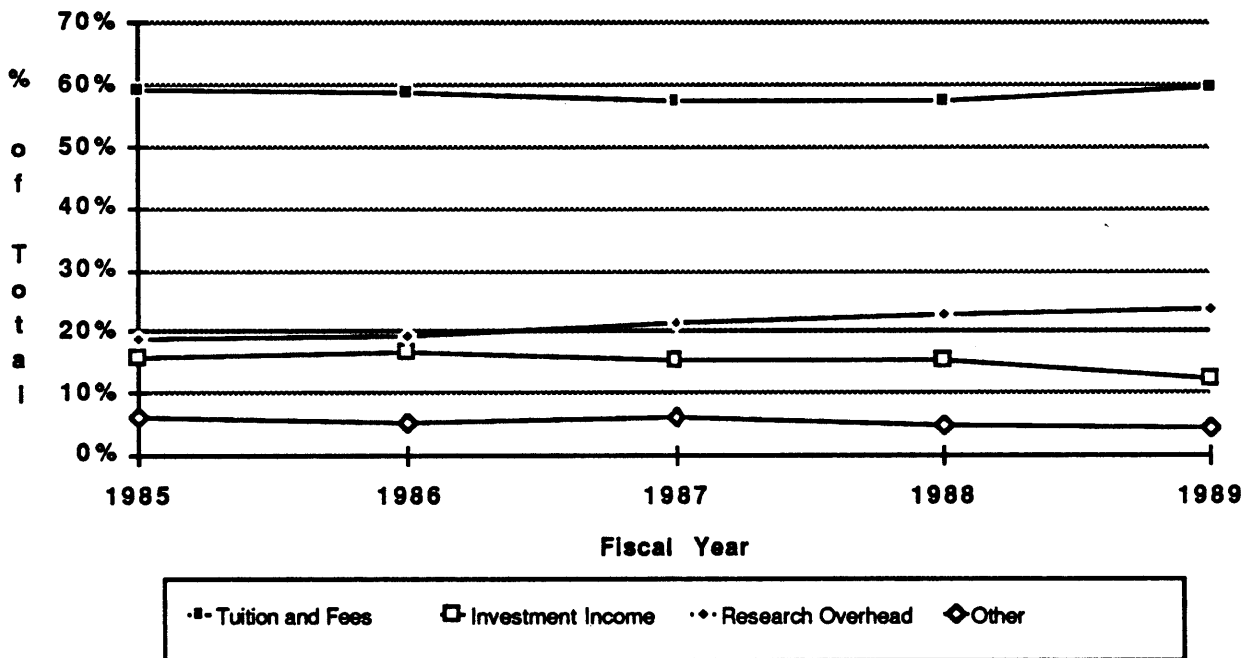


**Distribution of Educational and General Operating (E&GO) Expenditures and Transfers
Fiscal Year 1989
(Total = \$106,851,000)**



CARNEGIE MELLON UNIVERSITY

**Percent of Educational and General Operating (E&GO) Income*
by Source
Fiscal Years 1985 to 1989**



"Investment income" includes endowment income and current fund investments. "Other" includes gifts and grants and miscellaneous income.

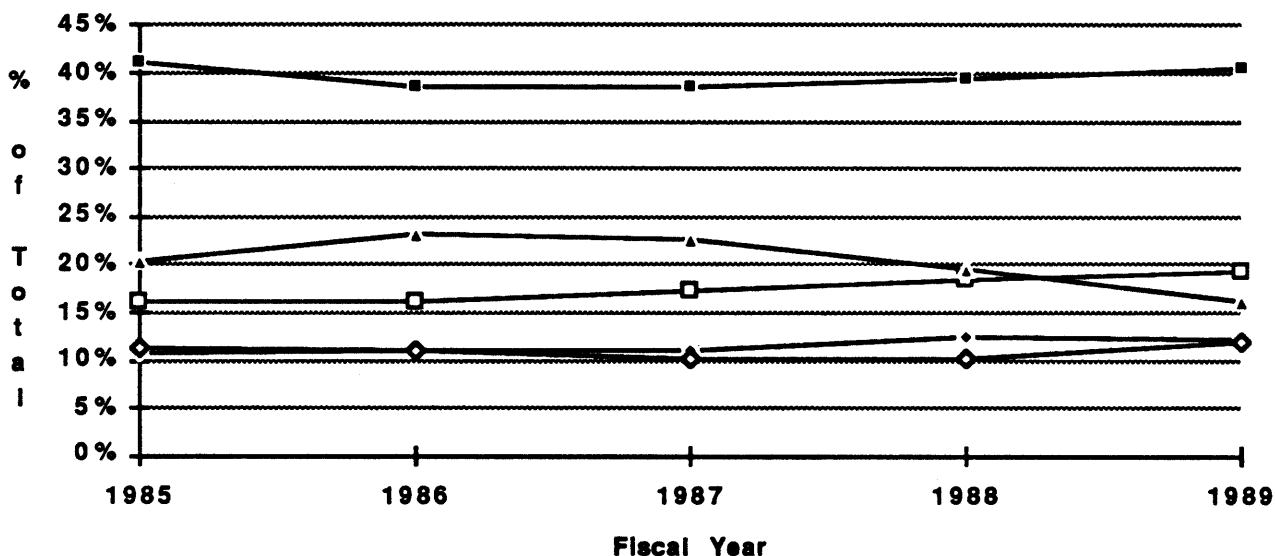
**Educational and General Operating (E&GO) Income *
by Source
Fiscal Years 1985 to 1989
(Dollars in Thousands)**

	1985	1986	1987	1988	1989
Income					
Tuition and Fees	\$44,452	\$50,925	\$55,591	\$59,781	\$63,846
Endowment Income	6,558	8,297	8,727	9,167	9,233
Current Fund Investments	5,073	6,185	6,093	6,645	3,595
Gifts & Grants	2,664	2,127	3,494	2,730	2,356
Research Overhead	14,069	16,755	20,558	23,377	25,391
Miscellaneous Income	1,956	2,504	2,388	1,964	2,448
TOTAL	\$74,772	\$86,793	\$96,851	\$103,664	\$106,869

*Excluding Management Centers.

CARNEGIE MELLON UNIVERSITY

**Percent of Educational and General Operating (E&GO) Expenditures and Transfers*
by Function
Fiscal Years 1985 to 1989**



■ Instr. & Dept. Res. □ Acad. & Stdt. Sup. ••• Adm. & Inst. Exp. ◆ Op. of Plant & Util. ▲ Transfers

Academic & Student Support includes Academic Support, Student Services and Undergraduate Financial Aid.

**Educational and General Operating (E&GO) Expenditures and Transfers
by Function
Fiscal Years 1985 to 1989
(Dollars in Thousands)**

	1985	1986	1987	1988	1989
Expenditures					
Instruction & Department Research	\$30,796	\$33,510	\$37,402	\$40,848	\$43,471
Academic Support	3,738	4,558	5,867	7,139	7,240
Student Services	3,024	3,214	4,214	4,395	4,966
Undergraduate Financial Aid	5,289	6,129	6,777	7,538	8,325
Administration	6,569	7,908	8,357	9,946	10,007
Institutional Expense	1,465	1,768	2,367	2,944	3,124
Operation & Maintenance of Plant	4,644	5,244	5,355	5,951	7,427
Utilities & Steam	3,818	4,239	4,575	4,692	5,178
TOTAL	\$59,343	\$66,570	\$74,914	\$83,453	\$89,738
Transfers					
Capital	\$11,491	\$14,708	\$15,852	\$16,183	\$12,361
Other	3,857	5,435	5,994	3,970	4,752
TOTAL	\$15,348	\$20,143	\$21,846	\$20,153	\$17,113
TOTAL	\$74,691	\$86,713	\$96,760	\$103,606	\$106,851

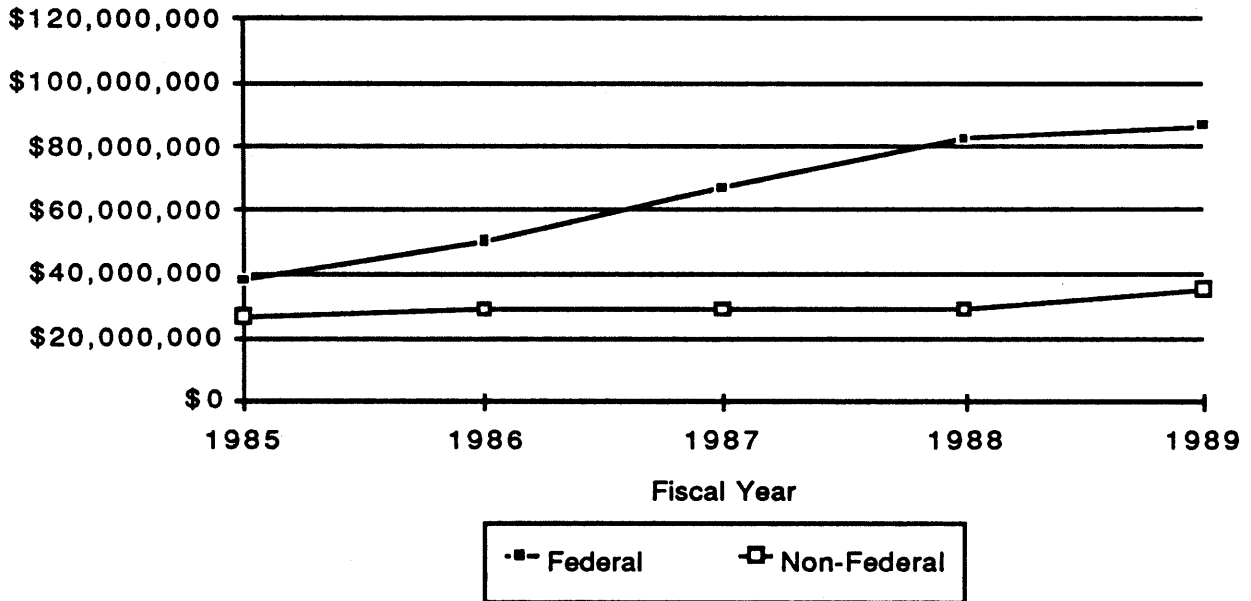
CARNEGIE MELLON UNIVERSITY

**Total Sponsored Research Costs
by College and Research Center
Fiscal Years 1985 to 1989
(Dollars in Thousands)**

	1985	1986	1987	1988	1989
Direct Costs					
CIT	\$10,170	\$12,207	\$14,088	\$16,029	\$16,947
CFA	404	233	329	239	306
H&SS	2,295	3,302	4,504	4,814	4,953
MCS	6,924	6,948	8,234	9,804	9,840
SCS	20,008	20,251	22,898	24,545	29,277
GSIA	685	810	554	585	689
SUPA	467	381	434	347	466
CMRI	4,884	5,495	6,069	5,702	5,462
SEI	1,892	7,913	12,597	17,809	19,337
WPATC	229	1,325	1,471	1,826	1,748
Other	440	1,399	3,086	4,334	4,529
TOTAL	\$48,398	\$60,264	\$74,264	\$86,034	\$93,554
Indirect Costs					
CIT	\$3,489	\$3,926	\$4,951	\$5,584	\$5,853
CFA	143	81	145	95	86
H&SS	750	1,005	1,308	1,641	1,510
MCS	2,252	2,648	2,762	3,396	3,562
SCS	6,898	7,517	8,468	9,015	9,973
GSIA	300	381	315	268	333
SUPA	132	169	83	127	185
CMRI	1,871	2,207	2,239	2,337	2,433
SEI	110	575	1,158	1,502	1,563
WPATC	0	0	0	0	0
Other	15	303	613	1,066	1,639
TOTAL	\$15,960	\$18,812	\$22,042	\$25,031	\$27,137
Total Sponsored Research Costs					
CIT	\$13,659	\$16,133	\$19,039	\$21,613	\$22,800
CFA	547	314	474	334	392
H&SS	3,045	4,307	5,812	6,455	6,463
MCS	9,176	9,596	10,996	13,200	13,402
SCS	26,906	27,768	31,366	33,560	39,249
GSIA	985	1,191	869	853	1,022
SUPA	599	550	517	474	652
CMRI	6,755	7,702	8,308	8,039	7,894
SEI	2,002	8,488	13,755	19,311	20,900
WPATC	229	1,325	1,471	1,826	1,748
Other	455	1,702	3,699	5,400	6,169
TOTAL	\$64,358	\$79,076	\$96,306	\$111,065	\$120,691

CARNEGIE MELLON UNIVERSITY

**Total Sponsored Research Costs
by Source
Fiscal Years 1985 to 1989**

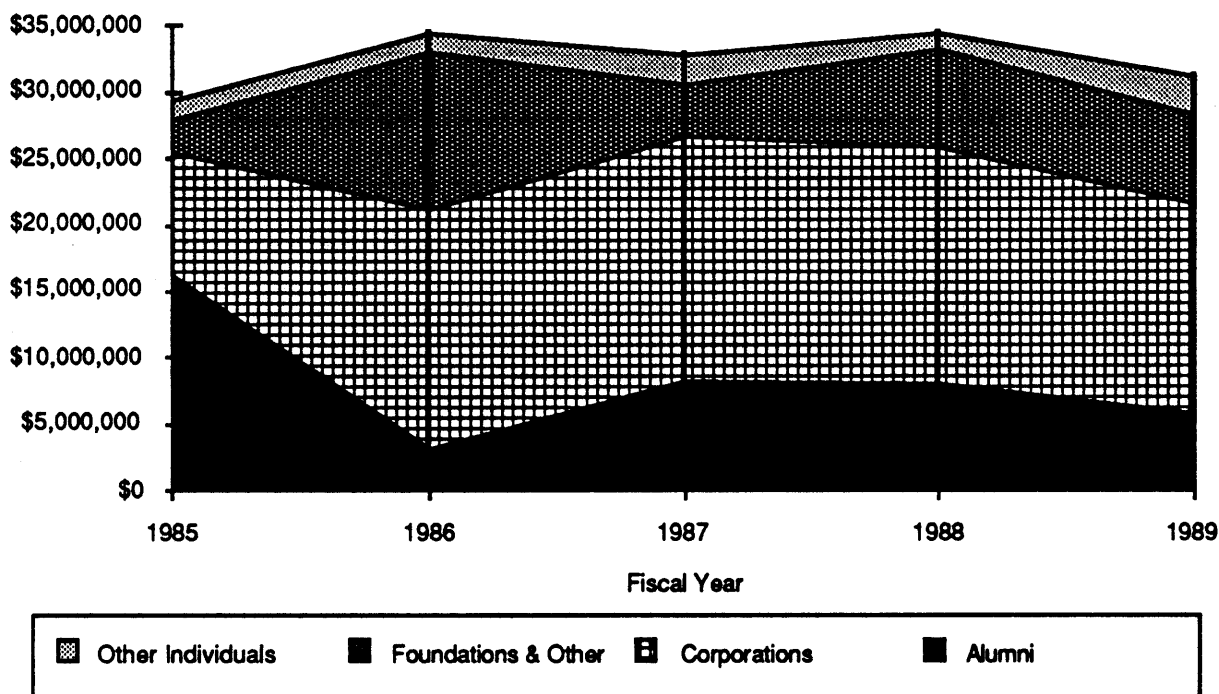


**Total Sponsored Research Costs
by Agency
Fiscal Years 1985 to 1989**

	1985	1986	1987	1988	1989
Federal					
Defense	\$19,588,251	\$29,431,236	\$39,876,261	\$47,300,997	\$51,591,526
National Science Foundation	7,508,956	8,490,842	15,153,898	19,007,709	18,064,424
Health & Human Services	5,312,074	6,159,148	6,648,486	8,767,297	7,671,592
Energy	3,495,484	3,273,420	3,343,418	3,753,054	4,114,278
Other Federal	2,070,003	2,840,093	2,549,617	3,489,823	4,537,403
TOTAL	\$37,974,768	\$50,194,739	\$67,571,680	\$82,318,880	\$85,979,223
Non-Federal					
Industrial	\$16,804,123	\$17,403,119	\$16,211,340	\$17,100,589	\$18,943,891
Other Non-Federal	9,579,162	11,478,126	12,522,544	11,646,452	15,768,230
TOTAL	\$26,383,285	\$28,881,245	\$28,733,884	\$28,747,041	\$34,712,121
TOTAL	\$64,358,053	\$79,075,984	\$96,305,564	\$111,065,921	\$120,691,344

CARNEGIE MELLON UNIVERSITY

**Total Giving
By Source
Fiscal Years 1985 to 1989**



**Voluntary Support
By Source and Purpose
Fiscal Years 1985 to 1989**

	1985	1986	1987	1988	1989
Current Operations					
Alumni	\$1,759,992	\$1,846,699	\$1,876,097	\$1,921,594	\$2,339,210
Other Individuals	545,626	588,449	842,186	806,762	\$1,193,421
Foundations & Other	2,301,095	6,116,363	2,802,792	5,850,080	\$6,120,168
Corporations	4,234,355	5,513,757	5,513,094	4,911,391	\$4,042,599
TOTAL	\$8,841,068	\$14,065,268	\$11,034,169	\$13,489,827	\$13,695,398
Capital					
Alumni	\$14,365,102	\$1,281,624	\$6,466,320	\$6,120,059	\$3,419,150
Other Individuals	738,854	686,157	1,513,895	513,822	\$1,657,045
Foundations & Other	314,764	5,796,155	973,300	1,444,467	\$682,673
Corporations	4,961,030	12,478,391	12,879,100	12,909,517	\$11,769,657
TOTAL	\$20,379,750	\$20,242,327	\$21,832,615	\$20,987,865	\$17,528,525
Total Giving					
Alumni	\$16,125,094	\$3,128,323	\$8,342,417	\$8,041,653	\$5,758,360
Other Individuals	1,284,480	1,274,606	2,356,081	1,320,584	2,850,466
Foundations & Other	2,615,859	11,912,518	3,776,092	7,294,547	6,802,841
Corporations	9,195,385	17,992,148	18,392,194	17,820,908	15,812,256
TOTAL	\$29,220,818	\$34,307,595	\$32,866,784	\$34,477,692	\$31,223,923

Source: Survey of Voluntary Support of Education, Council for Financial Aid to Education

CARNEGIE MELLON UNIVERSITY

Finances

Additional Facts and Figures

**Undergraduate Tuition Comparison, Top Ten Competitors
Academic Year 1989-90
Based on Application Overlap, Fall 1989 Admissions Market Study
In Order of Tuition**

<u>School</u>	<u>Tuition & Fees</u>	<u>Room & Board*</u>
Carnegie Mellon	\$13,080	\$4,442
MIT	14,500	4,835
Princeton	14,390	4,817
Boston U.	14,095	5,540
Cornell	14,040	4,630
U. of Penn	13,950	5,400
Duke	13,928	4,356
Washington U.	13,725	4,610
RPI	13,680	4,475
Stanford	13,569	5,595
Northwestern	12,996	4,380
Penn State	3,494 (\$7,248 out of state)	3,170
MEDIAN	\$13,928	\$4,630

* Double Room, 21 meals/week
CMU is Double Room, 19 meals/week
Source: College Cost Book

**Carnegie Mellon Tuition Benefits
Fiscal Years 1985 to 1989
(Dollars in Thousands)**

	<u>1985</u>	<u>1986</u>	<u>1987</u>	<u>1988</u>	<u>1989</u>
Total	\$1,694	\$2,189	\$2,162	\$2,578	\$2,975

**Carnegie Mellon National Rank
Research and Development Funds
Academic Science and Engineering**

	<u>1986</u>	<u>1987</u>	<u>1988</u>
Total R&D	49th	45th	45th
Total R&D Among Privates	17th	18th	17th
Industry Sponsored R&D	3rd	6th	7th

Source: NSF

**Endowment Statistics
Fiscal Years 1985 to 1989
(Dollars in Thousands)**

	<u>1985</u>	<u>1986</u>	<u>1987</u>	<u>1988</u>	<u>1989</u>
Book Value	\$168,449	\$197,788	\$225,014	\$241,066	\$261,452
Market Value	193,458	228,768	265,893	265,664	291,272
Life Income Funds	20,510	24,575	23,972	25,892	21,674
Rank	35	34	36	38	NA
Endowment/ FTE Student*	\$33,600	\$37,600	\$43,400	\$42,974	NA
Rank	63	68	68	71	NA

*Private Institutions Only
Source: NACUBO Endowment Reports

SPACE AND FACILITIES

CARNEGIE MELLON UNIVERSITY

**Total Space
In Square Footage
By Major Division, College/Division, and Use Category
as of December 1989**

Major Division College/Division	Use Category					TOTAL
	Classroom	Laboratory /Studio	Office	Other	Housing	
President	0	0	3,926	162	0	4,088
Provost						
CIT	838	111,451	88,418	32,247	0	232,954
CFA	16,138	112,416	35,310	21,206	0	185,070
H&SS	2,794	12,644	62,990	6,298	0	84,726
MCS	867	126,191	61,307	31,361	0	219,726
SCS	1,021	35,459	66,607	24,044	0	127,131
GSIA	7,653	0	22,305	4,736	0	34,694
SUPA	1,656	2,641	18,808	1,994	0	25,099
MI	0	28,968	33,559	7,536	0	70,063
SEI	0	3,037	46,861	43,959	0	93,857
Other	0	0	4,963	862	0	5,825
TOTAL	30,967	432,807	441,128	174,243	0	1,079,145
VP Academic Services	310	6,386	24,861	118,055	0	149,612
VP Business Affairs						
Auxiliary Services	4,326	0	2,879	62,831	881,822	951,858
Other	0	0	30,398	44,516	0	74,914
TOTAL	4,326	0	33,277	107,347	881,822	1,026,772
VP Development	0	0	7,971	480	0	8,451
VP Enrollment						
Registrar	54,528	0	1,600	1,255	0	57,383
Other	0	2,201	24,940	80,161	0	107,302
TOTAL	54,528	2,201	26,540	81,416	0	164,685
VP University Planning	0	0	4,885	156	0	5,041
VP University Relations	0	0	6,049	6,265	0	12,314
OTHER	32	1,597	68,985	51,901	0	122,515
Total Net Assignable Space	90,163	442,991	617,622	540,025	881,822	2,572,623
Building Support	0	0	0	752,390	239,780	992,170
TOTAL	90,163	442,991	617,622	1,292,415	1,121,602	3,564,793

Note: Housing data are estimated figures.

Other division includes 108,849 sq. ft. of Non-CMU Entities: Mine Safety Health Administration and Union Carbide.

CARNEGIE MELLON UNIVERSITY

**Total Space
In Square Footage
By Major Division, College/Division, and Building
as of December 1989**

Major Division	Building													
	B/P	CC	CFA	DH	EDSH	FMR/MSL	GSIA	GYM	HBH	HH	HL	MMC	MI	PPB
President	109	0	0	0	0	0	0	0	413	0	0	0	0	0
Provost														
CIT	44,425	0	0	53,265	1,873	0	0	0	7,285	74,127	0	0	0	0
CFA	5,233	0	87,038	36,376	0	0	0	0	0	0	0	52,591	0	0
H&SS	75,608	0	0	0	0	0	285	0	0	0	0	7,233	0	0
MCS	0	0	0	43,249	0	0	0	0	0	0	0	0	125,149	0
SCS	0	0	0	11,372	3,039	15,691	0	0	0	0	0	0	0	0
GSIA	0	0	0	0	0	0	32,324	0	0	0	0	0	0	0
SUPA	0	0	0	0	0	0	0	0	25,099	0	0	0	0	0
MI	0	0	0	0	0	0	0	0	0	0	0	0	42,401	0
Other	972	0	0	0	1,515	0	0	0	1,220	0	0	0	556	0
TOTAL	126,238	0	87,038	144,262	6,427	15,691	32,609	0	33,604	74,127	0	59,824	168,106	0
VP Academic Services	3,947	4	0	0	1,926	211	0	0	4,480	0	77,899	0	12,825	0
VP Business Affairs														
Auxiliary Srv's	5,224	9,905	20	0	0	0	100	0	0	0	0	39	316	59
Other	3,292	0	0	0	1,747	0	0	0	390	0	0	0	5,060	29,413
TOTAL	8,516	9,905	20	0	1,747	0	100	0	390	0	0	39	5,376	29,472
VP Development	0	0	0	0	0	0	0	0	0	0	0	0	0	0
VP Enrollment														
Registrar	22,832	0	0	11,637	0	0	0	0	4,127	1,860	0	2,662	1,125	0
Other	0	0	0	424	3,353	0	0	55,223	4,880	510	0	1,189	0	0
TOTAL	22,832	0	0	12,061	3,353	0	0	55,223	9,007	2,370	0	3,851	1,125	0
VP University Planning	0	0	0	0	0	0	0	0	0	0	0	0	0	0
VP University Relations	0	0	0	0	106	0	0	0	861	0	0	0	313	0
OTHER	0	0	0	0	910	38,511	0	0	22,571	0	0	0	10,953	0
Total Net Assignable Space	161,642	9,909	87,058	156,323	14,469	54,413	32,709	55,223	71,326	76,497	77,899	63,714	198,698	29,472
Building Support	71,047	2,653	36,848	59,336	3,829	21,417	27,670	7,602	31,898	36,975	23,681	37,729	152,371	14,256
TOTAL	232,689	12,562	123,906	215,659	18,298	75,830	60,379	62,825	103,224	113,472	101,580	101,443	351,069	43,728

Note: Housing data are estimated figures.

Other building includes Bramer House, Studio Theatre, West Garages, 5017 Forbes Ave. and Bushy Run Facilities.

Other division includes 108,849 sq. ft. of Non-CMU Entities: Mine Safety Health Administration and Union Carbide.

CARNEGIE MELLON UNIVERSITY

**Total Space
in Square Footage
By Major Division, College/Division, and Building
as of December 1989**

Major Division	Building										TOTAL
	PRB	PUB	SH	SKIBO	UCC	WEH	WH *OTHER	HOUSING	LEASED		
President	0	0	0	0	0	0	3,566	0	0	0	4,088
Provost											
CIT	0	0	17,889	0	2,119	29,467	0	904	0	1,600	232,954
CFA	0	0	0	0	0	195	0	3,637	0	0	185,070
H&SS	0	0	0	0	0	0	0	0	0	1,600	84,726
MCS	0	0	1,761	0	0	49,567	0	0	0	0	219,726
SCS	5,367	0	0	0	10,067	81,595	0	0	0	0	127,131
GSIA	0	0	0	0	0	0	0	2,370	0	0	34,694
SUPA	0	0	0	0	0	0	0	0	0	0	25,099
Mi	0	0	0	0	0	0	0	0	0	27,662	70,063
Other	0	0	0	626	0	0	936	0	0	93,857	99,682
TOTAL	5,367	0	19,650	626	12,186	160,824	936	6,911	0	124,719	1,079,145
VP Academic Services	0	0	0	0	25,659	19,518	568	0	2,283	292	149,612
VP Business Affairs											
Auxiliary Srv's	0	0	0	37,894	0	0	431	0	801,620	96,250	951,858
Other	0	0	0	41	785	0	9,768	2,643	0	21,775	74,914
TOTAL	0	0	0	37,935	785	0	10,199	2,643	801,620	118,025	1,026,772
VP Development	0	0	0	0	0	0	5,398	3,053	0	0	8,451
VP Enrollment											
Registrar	0	0	4,939	0	98	6,413	1,690	0	0	0	57,383
Other	904	0	0	26,022	185	0	9,510	446	4,256	400	107,302
TOTAL	904	0	4,939	26,022	283	6,413	11,200	446	4,256	400	164,685
VP University Planning	0	0	0	0	3,682	0	1,359	0	0	0	5,041
VP University Relations	0	9,264	0	0	0	0	0	1,770	0	0	12,314
OTHER	640	0	0	0	0	0	0	48,728	0	202	122,515
Total Net Assignable Space	6,911	9,264	24,589	64,583	42,595	186,755	33,226	63,551	808,159	243,638	2,572,623
Building Support	92	1,054	11,599	30,076	20,000	107,128	12,702	2,157	240,715	39,335	992,170
TOTAL	7,003	10,318	36,188	94,659	62,595	293,883	45,928	65,708	1,048,874	282,973	3,564,793

Note: Housing data are estimated figures.

Other building includes Bramer House, Studio Theatre, West Garages, 5017 Forbes Ave. and Bushy Run Facilities.

Other division includes 108,849 sq. ft. of Non-CMU Entities: Mine Safety Health Administration and Union Carbide.

APPENDIX

DEFINITIONS

I. COLLEGE AND DEPARTMENT LISTING

<u>College</u>	<u>Department/Unit</u>	<u>Abbreviation</u>	<u>Notes</u>
CARNEGIE INSTITUTE OF TECHNOLOGY		CIT	Undergraduate and Graduate college.
	Biomedical Engineering	Biomedical E.	
	Chemical Engineering	Chemical E.	
	Civil Engineering	Civil E.	
	Electrical and Computer Engineering	E & C E.	
	Engineering and Public Policy	EPP	
	Manufacturing Engineering	Mfg. E.	
	Mechanical Engineering	Mechanical E.	
	Metallurgical Engineering and Materials Science	MEMS	
	Engineering Design Research Center	EDRC	Research Center
ADDITIONAL UNITS:			
	Nuclear Engineering	Nuclear E.	This is no longer formally a department, but a few students are still finishing or graduating from the program.
	No Major Department	No Major Dept.	Students do not declare majors until their sophomore year.
	Interdisciplinary	Interdiscp.	Interdisciplinary units are jointly taught among departments.
	Dean's Office	Dean's Ofc.	Some faculty with administrative responsibility are located in the the Dean's office.
COLLEGE OF FINE ARTS		CFA	Undergraduate and graduate college.
	Architecture		
	Art		
	Design		
	Drama		
	Music		
	Studio for Creative Imagery	SFCI	Research Center
ADDITIONAL UNITS:			
	Interdisciplinary	Interdiscp.	Interdisciplinary units are jointly taught among departments.
	Dean's Office	Dean's Ofc.	Some faculty with administrative responsibility are located in the Dean's office.
	Pre-College Art	Pre-Col. Art	Year-round program for pre-college art students and CMU students who are not art majors.
	Pre-College Music	Pre-Col. Mus.	Year-round program for pre-college music students and CMU students who are not music majors.
COLLEGE OF HUMANITIES AND SOCIAL SCIENCES		H&SS	Undergraduate and graduate college.
	English		
	History		
	Philosophy		
	Psychology		
	Social and Decision Sciences	S & D S.	
	Statistics		
ADDITIONAL UNITS:			
	Economics		The student major Economics is housed in H&SS.
	Industrial Management in H&SS	IM - H&SS	Some freshmen and sophomores take the H&SS core before being accepted into the IM major.

<u>College</u> <u>Department/Unit</u>	<u>Abbreviation</u>	<u>Notes</u>
H&SS (cont.)		
Student Defined Major	Student Def'd	Some students in H&SS define individualized interdisciplinary majors.
No Major Department Dean's Office	No Major Dept. Dean's Ofc.	Students do not declare majors until their junior year. Some faculty with administrative responsibility are located in the the Dean's office.
MELLON COLLEGE OF SCIENCE MCS		
		Undergraduate and graduate college.
Biological Sciences	Biology	
Chemistry		
Mathematics	Math	
Physics		
ADDITIONAL UNITS		
No Major Department	No Major Dept.	Students do not declare majors until their sophomore year.
Dean's Office	Dean's Ofc.	Some faculty with administrative responsibility are located in the Dean's office.
Interdisciplinary	Interdiscp.	Interdisciplinary units are jointly taught among departments.
SCHOOL OF COMPUTER SCIENCE SCS		
		Graduate College.
Computer Science	Comp. Sci.	
Robotics		
Center for Machine Translation	CMT	Research Center.
GRADUATE SCHOOL OF INDUSTRIAL ADMINISTRATION GSIA		
		Graduate College.
ADDITIONAL UNITS		
Economics		Most Economics courses are taught by GSIA faculty.
Industrial Management	IM	Most IM courses are taught by GSIA faculty.
SCHOOL OF URBAN AND PUBLIC AFFAIRS SUPA		
		Graduate College.
Carnegie Mellon Research Institute CMRI		
		Research Center.
Industrial Management	IM	IM is an unaffiliated undergraduate major.
Information Networking Institute	INI	Research Center offering a MS degree.
Software Engineering Institute	SEI	Research Center
Administration	ADMIN	

NOTE:

The category of **NON-DEGREE** students is often listed as a Department in tables showing student enrollment. These non-degree seeking students are not affiliated with a Department.

II. TIME PERIODS

Fall Semester	Data are as of the Mid-Semester point in the Fall Semester (except Units, which are end of semester counts).
Academic Year	Data are the addition of Fall and Spring Semester totals.
Fiscal Year	Data are for the period July 1 to June 30 of the indicated year.

III. DEFINITIONS OF TERMS

STUDENTS

FRESHMEN

Applied	Individuals who completed the Admissions process.
Admitted	Applicants who were admitted to CMU.
Enrolled	Applicants who were admitted and actually enrolled.
Yield	Enrolled as a percent of Admitted freshmen.

Competing Schools: The top 10 schools to which students admitted to CMU also submitted applications. The source of this data is the Competition Surveys.

ENROLLMENT

Students by Level

Undergraduate	Freshman, Sophomore, Junior, Senior
Graduate	Students enrolled in Master's or Doctoral programs.
Non-Degree	Special students who are not enrolled in a degree program.

Headcount Each student, full or part time, is counted once.

Full-Time Equivalent (FTE) Each full-time student is counted once; part-time students are counted based on the percentage of full-time tuition paid to cover their current courses.

HOUSING TYPE

University Housing

On-Campus	CMU owned dormitories physically located on the campus.
Off-Campus	CMU controlled off-campus housing.
Fraternity/Sorority	Fraternity or Sorority controlled housing.

Non-University Housing All other student residence arrangements.

PERSISTENCE

The percentage of students, enrolled in a particular year, who remain at CMU or who graduate over the succeeding five years.

DEGREES

Bachelors	B.A., B.S., BFA, B.Arch.
Masters	M.A., M.S., M.E., MFA, M.Arch., M.A.M., M.A.T, M.Phil., M.P.M, M.S.I.A.
Doctorates	D.A., Ph.D.

All degrees are shown by the Department from which they were earned, rather than the particular program or emphasis listed on the individual's degree. All degree programs are listed in the front of this booklet.

TEACHING

UNITS

A student at CMU earns a specified number of units for each course taken at the University. Three (3) units are the equivalent of one (1) credit hour. The number of units taught by a department is calculated by multiplying the number of students in each of the courses offered by that department by the number of units associated each course.

Other Includes units taught to Non-Degree students and students from other colleges attending CMU through the Pennsylvania Council of Higher Education (PCHE) agreement.

FACULTY

Total Faculty includes three categories of faculty members. They are:

Regular Faculty	Regular faculty are comprised of four ranks of permanent faculty members (subject to the rules of the tenure process): Professor, Associate Professor, Assistant Professor, and Instructor. Professors and some Associate Professors are tenured; the rest of the Associate Professors and Assistant Professors are eligible for tenure, or in the Tenure Stream; and Instructors are eligible for promotion into the tenure stream.
Research Faculty	Research faculty are comprised of several ranks of faculty equivalent research positions of Scientists / Engineers.
Special Faculty	Special faculty are comprised several ranks of temporary, instructional, and research faculty including active Faculty Emeritus, Adjunct faculty, Instructional Staff, Lecturers, Visiting Faculty, Special Research Faculty, and Post-Doctoral Associates. Administrators with Special Faculty appointments are excluded.
Method of counting:	Regular and Research may have joint appointments in one or more departments, and are split between these appointments accordingly. Special Faculty are counted in the department in which they have their primary appointment.

ALUMNI

Includes all living persons who attended the university as degree candidates.

FINANCES

TUITION AND FEES

Undergraduate Tuition	Tuition charged to full-time undergraduate students. This is established at the university level.
Graduate Tuition	Tuition charged to full-time graduate students. This is established by each college.
Average Room	The annual charge for a standard double room. Other options for university housing include: Standard and Prime rooms for one, three or four students, and several apartment, townhouse or separate house alternatives.
Average Board	The annual charge for a 19 meal per week plan. Other options include 15, 10 and 5 meals per week .
Total Estimated Cost of Attending CMU.	This includes tuition and activities fee, books and supplies, incidentals, room and board for Residents and lunches and transportation for Commuters. This is computed each year by the Financial Aid Office.

UNDERGRADUATE FINANCIAL AID RESOURCES

Federal Aid	PELL SEOG	Federal entitlement grant program. Supplemental Education Opportunity Grant.
State Aid	PHEAA	Pennsylvania Higher Education Assistance Agency.
Other State Aid	Aid from states other than Pennsylvania.	
CMU E&GO	Aid provided from Carnegie Mellon Educational and General Operating Expenses.	
CMU Endowed	Aid provided from income from the Carnegie Mellon University Endowment Fund.	
CMU Gifts & Grants	Aid provided through gifts and grants to the University for this purpose.	
ROTC	Money from the Air Force, Army and Navy ROTC programs.	
Other Grant Resources	Aid from all other sources, primarily scholarships.	

EDUCATION AND GENERAL OPERATING (E&GO) INCOME, EXPENDITURES AND TRANSFERS

E&GO BUDGET The E&GO budget allocates unrestricted income in the Current Fund to support the basic educational and administrative functions of the university. Operating costs not included in the E&GO are covered primarily by restricted funds received either as direct support for sponsored research, or as gifts or grants for particular (restricted) purposes. Certain activities of the University have been "designated" as management centers, and, therefore, are not included in the E&GO. Management centers include: Auxiliary Services, Mellon Institute of Research, Summer School and Executive Education Programs, GSIA and SUPA.

INCOME

Tuition & Fees	Payments made by undergraduate, graduate and special students in accordance with University tuition and fee schedules.
Endowment Income	Unrestricted income derived from endowment investments
Current Fund Investments	Earnings derived from Current Fund balances.
Gifts and Grants	Gifts given to the University which are not restricted to a specific purpose by the donor.
Research Overhead	The amount charged to research sponsors to reimburse the university for the indirect costs of administering and housing research programs.
Misc. Income	Includes: interest on operating funds and reserve holding interest or University internal loans and miscellaneous charges.

EXPENDITURES

Instruction & Dept. Research	Expenditures supporting the academic programs and operations in the colleges.
Academic Support	Includes: the Libraries and Audio Visual Aids, and Computing and Info Services.
Student Services	Includes: Enrollment Planning, Athletics and Student Affairs.
UG Financial Aid	Unrestricted aid supporting undergraduates.
Administration	Expenses supporting administrative units.
Institutional Exp	Includes: insurance, legal and investment agent fees.
Oper. & Maint. of Plant	Operation and maintenance of physical plant.
Utilities and Steam	Expenditures for utilities and steam.
Total Transfers	Includes: transfers to capital, debt service, management centers, college reserves.

RESEARCH COSTS

In the listing by College and Research Center,
Other includes: Academic Computing, Computing Systems, Hunt Institute for Botanical Documentation, Center for the Design of Educational Computing, Office of the Provost, Office of the Vice President for Enrollment and General Institutional.

VOLUNTARY SUPPORT

Voluntary Support Contributions supporting the University, excluding: income from endowment and other invested funds, and support from federal, state and local governments and their agencies.

TUITION BENEFITS

This shows money paid to CMU faculty, staff and their dependents to take courses at CMU or other universities.

SPACE AND FACILITIES

USE CATEGORIES

Classroom Includes all rooms used for classrooms.

Laboratory/Studio Includes laboratory and studio facilities, used both as classrooms and for research.

Office Includes offices, office support areas and office-related conference rooms.

Other Includes Special Use Facilities (e.g. the gym), General Use Facilities (e.g., lounge or dining facilities), Support Facilities (e.g. computer, shop and storage rooms) and Health Care Facilities.

Building Support Includes circulation, custodial, mechanical and structural areas.

BUILDING ABBREVIATIONS

B/P Baker/Porter
CC College Club
CFA College of Fine Arts
DH Doherty Hall
EDSH Elliott Dunlap Smith Hall
FMR/MSL Field & Mobile Robotics Building / Mine Safety Laboratory Building
GSIA Graduate School of Industrial Administration
GYM Gym
HBH Hamburg Hall
HH Hammerschlag Hall
HL Hunt Library
MMC Margaret Morrison Carnegie Hall
MI Mellon Institute
PPB Physical Plant Building
PRB Planetary Robotics Building
PUB Publications and Printing Building
SH Scaife Hall
SKIBO Skibo
UCC UCC
WEH Wean Hall
WH Warner Hall