

Carnegie Mellon Facts 1989

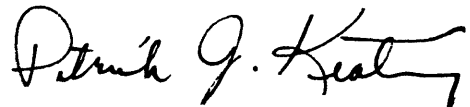
Volume 3

**Diane L. Gibson, Editor
University Planning
Carnegie Mellon University
March, 1989**

Foreword

Carnegie Mellon Facts is a compilation of some of the most commonly requested data and statistical information about Carnegie Mellon. It covers a wide variety of topics including admissions, enrollment, teaching, faculty and staff, alumni, and University finances. The source of the data shown in the tables and graphs is internal except where noted. The terms used are defined in the Appendix.

Carnegie Mellon Facts is intended as an internal document, produced annually for use by members of the campus community. We encourage you to keep this book handy and to use it as a reference. We received many valuable comments about last year's edition, and have made changes and additions wherever possible. We are again soliciting suggestions and comments on the contents, format and more generally, on ways to improve its usefulness to the campus community. Please tear out the last page of this booklet and respond to the brief questionnaire with your reactions. We will make every effort to respond.



Patrick J. Keating
Vice President for University Planning



Table of Contents

BACKGROUND

The University	3	
University Organizational Chart. Academic Year 1988-89	4	
Research Centers and Groups. Fiscal Year 1988	6	Mid Aug
Degree Programs. Academic Year 1988-89	8	Mid Aug
College and Department Accreditations. Fall Semester 1988	11	Mid Aug
Endowed and Named Professorships by College. Fiscal Year 1988	12	Mid Aug
Current Campus Map. November 1988.	14	
Current Campus Map, Building and Parking Listing.	15	
Campus Master Plan Map. 1988	16	

STUDENTS

Freshman Applicant Activity. Freshman Applicant Activity by College. Entering Fall Semesters 1984 to 1988	19	} Sept
Freshman Average SAT Scores, CMU and National. Freshman Average SAT Scores by College. Entering Fall Semesters 1984 to 1988	20	
Top Ten Competing Schools, Based on Application Overlap. Entering Freshmen 1973 to 1988	21	
Enrolled Freshmen by Region and State. Entering Fall Semester 1988	22	
Headcount Enrollment by Department, Level and Status. Fall Semester 1988	23	
Undergraduate Headcount Enrollment by Region and State. Fall Semester 1988	24	
Headcount Enrollment by Continent and Country of Citizenship. Fall Semester 1988	25	
Headcount Enrollment by Department, Level and Sex. Fall Semester 1988	26	
Headcount Enrollment by Department and Class. Fall Semester 1988	27	
Full-Time Equivalent (FTE) Enrollment by Department and Class. Fall Semester 1988	28	
Distribution of Students by Housing Type, Level and Sex. Fall Semester 1988	29	Sept-Oct
Headcount and Full-Time Equivalent (FTE) Enrollment by College, Level and Status. Fall Semesters 1983 to 1988	30	Mid Sem Rep
Retention, Graduation and Persistence Rates. Overall Persistence Rates by Undergraduate College/Department. Entering Classes Fall 1980 to Fall 1983	32	Sept
Total Degrees Granted by Department and Level. Academic Year 1987-88	33	} Mid Aug
Total Degrees Granted by College and Level. Academic Years 1983-84 to 1987-88	34	

TEACHING AND ACADEMIC SUPPORT

Units Taught by Department, Semester and Level. Academic Year 1987-88.....37 August

Units Taught by College and Level. Academic Years 1983-84 to 1987-8838 August

Library Collections and Resources. Fiscal Years 1985 and 1988. Computerized
Library Resources. Academic Year 1988-89.....39

Teaching. Additional Facts and Figures.....40

FACULTY AND STAFF

Full-Time Employees by Division and Job Category. Fall Semester 198843 Nov

Total Teaching Faculty by Department, Category and Status.
Fall Semester 1988.....44

Full-Time Regular Faculty by Rank and Department. Fall Semester 198845

Full-Time Regular Faculty by Tenure Status and Department. Fall Semester 198846

Full-Time Regular Faculty by College and Tenure Status. Fall Semesters
1984 to 1988.....47

Full-Time Regular Faculty by Tenure Status and College. Fall Semester 1988.
Full-Time Regular Faculty by Tenure Status. Fall Semesters 1984 to 198848

Average Faculty Salaries for Full-Time Regular Faculty. Fall Semesters 1984
to 198849

Special Teaching Faculty by Department, Category and Status.
Fall Semester 1988.....50

Faculty. Additional Facts and Figures.51

ALUMNI

Alumni By State. Through August 198855

FINANCES

Tuition and Fees. Room and Board. Total Estimated Cost of Attending CMU.
Academic Years 1984-85 to 1988-89.....59 August

Undergraduate Scholarships & Grants by Source, Percent of Total. Undergraduate
Financial Aid Resources by Source. Fiscal Years 1984 to 198860 Sept

Distribution of Educational and General Operating (E&GO) Income. Distribution
of Educational and General Operating (E&GO) Expenditures and
Transfers. Fiscal Year 198861 Sept

Percent of Educational and General Operating (E&GO) Income by Source.
Educational and General Operating (E&GO) Income By Source. Fiscal
Years 1984 to 198862 Sept

Percent of Educational and General Operating (E&GO) Expenditures and Transfers
by Function. Educational and General Operating (E&GO) Expenditures and
Transfers by Function. Fiscal Years 1984 to 198863 Sept

Total Sponsored Research Costs by College and Research Center. Fiscal Years 1984 to 1988	64	<i>Sept</i>
Total Sponsored Research Costs by Source. Total Sponsored Research Costs by Agency. Fiscal Years 1984 to 1988.....	65	<i>Sept</i>
Total Giving by Source. Voluntary Support by Source and Purpose. Fiscal Years 1984 to 1988	66	<i>Sept</i>
Finances. Additional Facts and Figures.	67	<i>Sept</i>

SPACE AND FACILITIES

Academic, Research and Administrative Space, in Square Footage, by Major Division, College/Division and Use Category. Fall Semester 1988.....	71
Academic, Research and Administrative Space, in Square Footage, by Major Division, College/Division and Building. Fall Semester 1988.....	72

APPENDIX

Definitions	77
-------------------	----

QUESTIONNAIRE	83
---------------------	----

BACKGROUND

The University

Carnegie Mellon is a privately supported research university dedicated to the pursuit of excellence in the creation and dissemination of knowledge and in artistic endeavors.

Carnegie Mellon strives for excellence in the dissemination of knowledge through high-quality teaching in a liberal-professional educational curriculum. The liberal educational component provides students with a broad base of knowledge which enables them to excel and adapt in a changing world. The professional educational component encourages students to develop the specific background and skills required for success in their careers. In the tradition of the Carnegie Plan for broadly educating engineers and scientists, Carnegie Mellon strives to develop creative, well-rounded professionals with the skills and knowledge needed to tackle the problems of the future. The Middle States Association of Colleges and Schools, in its highly complementary report, noted that Carnegie Mellon "has been very successful in articulating and communicating a sense of excellence and a drive toward greater excellence that seems to permeate the institution affecting all from trustees to undergraduate students." This standard of excellence is carried beyond the campus in the accomplishments of alumni in diverse fields--most visibly in the performing and visual arts, research, business and computer science.

The creation of knowledge (scholarly and artistic) is essential to the continued vitality of the University. The small size of the University facilitates flexible, interdisciplinary approaches to scholarship and research. Carnegie Mellon is able to tackle problems that cut across the boundaries of departments and disciplines. Perhaps because of this, Carnegie Mellon consistently exhibits its leadership by identifying new opportunities for scholarship and research. Accordingly, in the fall of 1988 Carnegie Mellon became one of the nation's first major research universities to establish a School of Computer Science.

In a strategy which links research efforts with teaching and the dissemination of information, Carnegie Mellon has become an acknowledged leader in the development and application of computing technology in higher education. The pioneering *Andrew* computer network, a development effort initiated in 1982 and deployed beginning in January 1986, consists of a high speed campus-wide communications network, a network file system, mail and bulletin boards, library information, and connections to approximately 5,000 computers with a variety of different operating systems. Innovation in the use of computing technology is encouraged in all areas of educational endeavor at Carnegie Mellon.

Carnegie Mellon endeavors to expand its role as a leader in the economic revitalization of Pittsburgh and Western Pennsylvania. To this end, Carnegie Mellon joined forces with the University of Pittsburgh in the development and administration of the Western Pennsylvania Advanced Technology Center, sponsored by the Ben Franklin Partnership Program. A Department of Defense contract to operate the Software Engineering Institute, established to disseminate software and plan training programs for software engineers, was competitively awarded to Carnegie Mellon in January 1985. In 1986, a consortium of Carnegie Mellon, University of Pittsburgh and Westinghouse Electric Corporation obtained support to establish the fifth national supercomputing facility in the country. Most recently, Carnegie Mellon, the University of Pittsburgh and the City of Pittsburgh began cooperating in the redevelopment of the former Jones and Laughlin Steel site into a high technology research area.

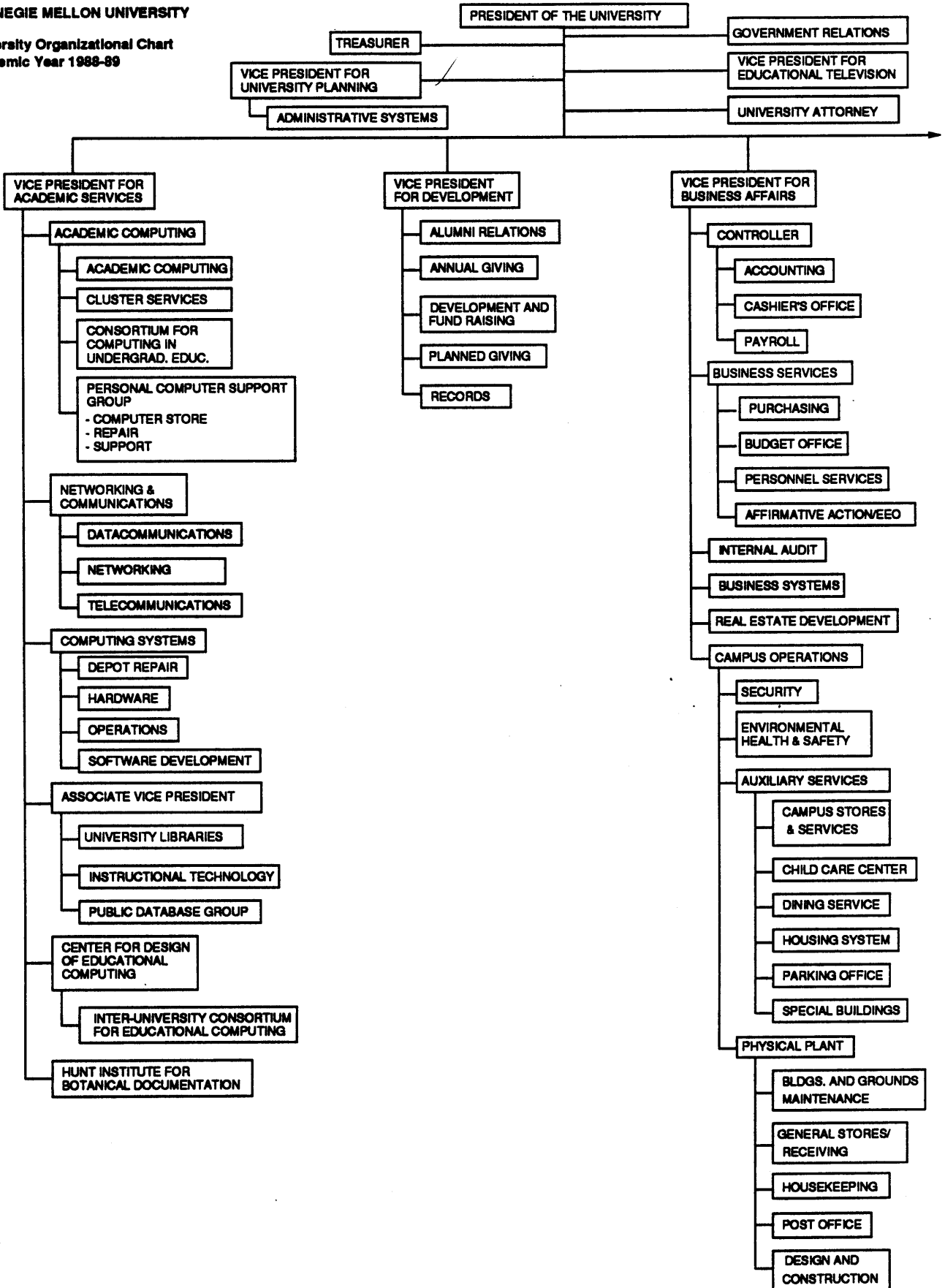
As part of its commitment to improving the quality of life on campus, Carnegie Mellon is undertaking to improve the nature and quality of the physical environment. This is occurring through the construction of a number of new buildings, the renovation of existing facilities and the redesign of the campus grounds and circulation. The outline for these improvements is contained in a comprehensive campus master plan. The first phase began in the summer of 1988 with the ground breaking for the East Campus Project, which will include a dormitory, a football stadium, intramural fields and a parking garage.

Over the years, Carnegie Mellon has successfully made the shift from a regional technical college to a national university known for its excellence and innovation in education and research. In the last decade, Carnegie Mellon has experienced an unparalleled period of planned growth and development. Undergraduate enrollment has risen 10 percent, and has become more geographically diverse, and graduate enrollment has grown by 77 percent. In the future, plans are to maintain stable undergraduate enrollment and to increase graduate enrollment in relation to research initiatives. Sponsored research has increased by 348% and is expected to continue to grow. These successes can be attributed to the on-going strategic planning effort, a continuous process which guides the University in recognizing and seizing new opportunities.

Built upon the strong educational ideals of its founders, Carnegie Mellon has grown into an institution of academic prominence. Rapid development to a leadership position in just three quarters of a century is a tribute to the thousands of men and women who have shaped and influenced the University. In the decades to come, Carnegie Mellon will continue to build upon these ideals in striving for excellence in its dual commitment to education and research.

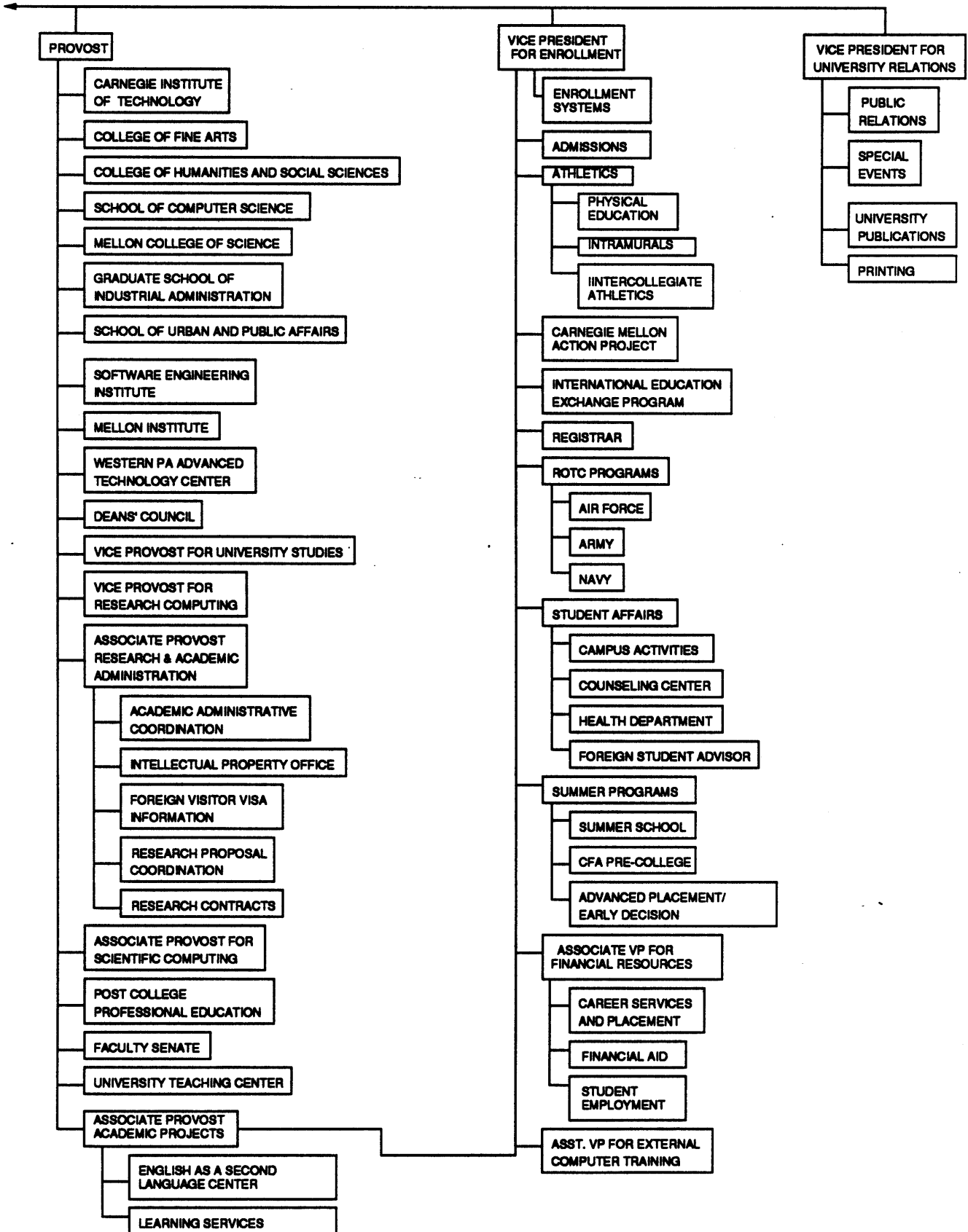
CARNEGIE MELLON UNIVERSITY

University Organizational Chart
Academic Year 1988-89



CARNEGIE MELLON UNIVERSITY

University Organizational Chart
Academic Year 1988-89



CARNEGIE MELLON UNIVERSITY

Research Centers and Groups Fall, 1988

Center for Art and Technology (CA&T)

Center for Building Performance and Diagnostics (CBD)

Center for Decision Technology and Strategy Research (CDTSR)

Center for the Design of Educational Computing (CDEC)

Center for Dependable Systems (CDS)

Center for Economic Development (SUPA CED)

Center for Educational Computing in English (CECE)

Center for Energy and Environmental Studies (CEES)

Center for Engineering Materials (CEM)

Center for Entrepreneurial Development (CED)

Center for Excellence in Optical Data Processing (CEODP)

Center for Fluorescence Research in Biomedical Sciences (CFRBS)

Center for Iron and Steelmaking Research (CISR)

Center for Labor Studies (CLS)

Center for Machine Translation (CMT)

Center for the Management of Technology (CMT)

Center for Product Research (CPR)

Center for Public Financial Management (CPFM)

Center for Risk Perception and Communication (CRPC)

Center for the Study of Public Policy (CSPP)

Center for the Study of Writing (CSW)

Coalition to Improve Management in State and Local Government (CIMSLG)

Communications Design Center (CDC)

Decision Systems Research Institute (DSRI)

Engineering Design Research Center (EDRC)

High Temperature Metal Matrix Composites Center (H-TMMCC)

Hunt Institute for Botanical Documentation (HIBD)

CARNEGIE MELLON UNIVERSITY

**Research Centers and Groups
Fall, 1988**

Information Technology Center (ITC)

Program on International Peace and Security (PIPS)

Laboratory for Computational Linguistics (LCL)

Magnetic Materials Research Group (MMRG)

Magnetics Technology Center (MTC)

Mellon Institute (MI)

Advanced Devices and Materials Group (AD&MG)

ASTM Test Monitoring Center (ASTMC)

Battery Technology Center (BTC)

Biotechnology Center (BC)

Center for Metals Production (CMP)

Center for Coatings and Surfaces (CS&C)

Computer Engineering Center (CEC)

High Speed Ground Transportation Center (HSGTC)

High Technology Center (HTC)

Materials Characterization Center (MCC)

Rail Systems Center (RSC)

Research Center on the Materials of the Artist and Conservator (CMA&C)

NMR Facility for Biomedical Studies (NMRFBS)

Pittsburgh Center for Social History (PCSH) (w/ U. of Pittsburgh)

Pittsburgh NMR Center for Biomedical Research (NMRCBR) (w/ U. of Pittsburgh)

Pittsburgh Supercomputing Center (PSC) (w/ U. of Pittsburgh and Westinghouse)

Robotics Institute (RI)

Statistical Center for Quality Improvement (SCQI)

Software Engineering Institute (SEI)

SRC/CMU Research Center for Computer-Aided Design (SCR/CMU-RC-CAD)

University Teaching Center (UTC)

Urban Systems Institute (USI)

Western Pennsylvania Advanced Technology Center (WPATC)

CARNEGIE MELLON UNIVERSITY

**Degree Programs
By College and Department
Academic Year 1988-89**

CARNEGIE INSTITUTE OF TECHNOLOGY

Biomedical Engineering

Engineering (Biomedical E. Option)	B.S.
Biomedical E. with CIT Department	M.S.
Biomedical E.	M.S.
Biomedical E. with CIT Department	Ph.D.
Biomedical E.	Ph.D.

Chemical Engineering

Chemical E.	B.S.
Chemical E.	M.S.
Chemical E.	Ph.D.

Civil Engineering

Civil E.	B.S.
Civil E.	M.E.
Civil E.	M.S.
Civil E.	Ph.D.

Engineering and Public Policy

Engineering Major & EPP	B.S.
EPP	M.S.
Engineering Major & EPP	M.S.
EPP	Ph.D.
Engineering Major & EPP	Ph.D.

Electrical and Computer Engineering

Computer E.	B.S.
Electrical E.	B.S.
Electrical and Computer E.	M.S.
Electrical and Computer E.	Ph.D.

Mechanical Engineering

Mechanical E.	B.S.
Mechanical E.	M.E.
Mechanical E.	M.S.
Mechanical E.	Ph.D.

Metallurgical Engineering & Materials Science

MEMS	B.S.
MEMS	M.E.
MEMS	M.S.
MEMS	Ph.D.

Manufacturing Engineering

Manufacturing Engineering	M.M.E.
---------------------------	--------

Colloids, Polymers, & Surfaces (Interdisciplinary w/ MCS)	M.S.
--	------

COLLEGE OF FINE ARTS

Master of Arts Management (w/ SUPA)	M.A.M.
-------------------------------------	--------

Architecture

Architecture	B.Arch.
Architecture (1st Professional degree)	M.Arch
Architecture	M.S.
Architecture	Ph.D.

Art

Art	B.F.A.
Art	M.A.T.
Art	M.F.A.

Design

Graphic Design	B.F.A.
Industrial Design	B.F.A.

Drama

Drama	B.F.A.
Costume Design	M.F.A.
Directing	M.F.A.
Lighting Design	M.F.A.
Playwriting	M.F.A.
Production	M.F.A.
Scene Design	M.F.A.

Music

Music Composition	B.F.A.
Music Performance	B.F.A.
Music Composition	M.F.A.
Music Conducting	M.F.A.
Music Performance	M.F.A.

INDUSTRIAL MANAGEMENT

Industrial Management	B.S.
-----------------------	------

CARNEGIE MELLON UNIVERSITY

**Degree Programs
By College and Department
Academic Year 1988-89**

COLLEGE OF HUMANITIES AND SOCIAL SCIENCES

Economics

Economics B.A.
Economics B.S.
Managerial Economics B.S.

English

Literary & Cultural Studies B.A.
Creative Writing B.A.
Professional Writing B.A.
Technical Writing B.S.
English M.A.
Professional Writing M.A.
Literary & Cultural Theory Ph.D.
Rhetoric Ph.D.

History

History B.A.
History B.S.
Applied History B.A.
Applied History B.S.
European Studies (Double Major) B.A.
History M.A.
Applied History M.S.
History Ph.D.
Applied History Ph.D.

Student Defined

B.A.

Student Defined

B.S.

Modern Languages

Modern Languages (Double Major) B.A.

Philosophy

Philosophy B.A.
Logic & Computation B.S.
Logic & Computation M.S.
Computational Linguistics Ph.D.
(w/ U. of Pittsburgh)
Pure & Applied Logic (w/ Computer Science & Mathematics) Ph.D.

Psychology

Psychology B.A.
Psychology B.S.
Cognitive Science B.S.
Psychology Ph.D.

Social and Decision Sciences

Social & Decision Sciences B.S.
Information & Decision Systems B.S.
Policy & Management B.S.
Social & Decision Sciences Ph.D.
Social Science & Public Policy (w/ SUPA) Ph.D.
Decision Making (w/ Statistics) Ph.D.

Statistics

Statistics B.S.
Statistics M.S.
Operations Research (w/ Mathematics) M.S.
Statistics Ph.D.
Decision Making (w/ S.&D.S) Ph.D.

MELLON COLLEGE OF SCIENCE

Biological Sciences

Biological Sciences B.S.
Biological Sciences & Humanities or Social Science B.A.
Biological Sciences Ph.D.
Biological Sciences/Biochemistry Ph.D.
Biological Sciences/Biophysics Ph.D.
Biological Sciences/Biochemistry & Biophysics Ph.D.

Chemistry

Chemistry B.A.
Chemistry B.S.
Chemistry/Computer Science B.S.
Chemistry M.S.
Chemical Instrumentation M.S.
Polymer Science M.S.
Colloids, Polymers, & Surfaces (w/ Chemical E.) M.S.
Chemistry Ph.D.
Chemistry/Biochemistry Ph.D.
Chemistry/Biophysics Ph.D.
Chemistry/Biochemistry & Biophysics Ph.D.

Mathematics

Mathematics B.S.
Applied Mathematics (Computer Science) B.S.
Applied Mathematics (Operations Research) B.S.
Applied Mathematics (Statistics) B.S.
Mathematics M.S.
Applied Mathematics M.S.
Operations Research M.S.
Mathematics D.A.
Mathematics Ph.D.

Physics

Physics B.A.
Physics B.S.
Physics/Computer Science Track B.S.
Physics & Scientific Instrumentation B.S.
Physics M.S.
Measurement & Control M.S.
Physics Ph.D.
Applied Physics Ph.D.
Physics/Biochemistry Ph.D.
Physics/Biophysics Ph.D.
Physics/Biochemistry & Biophysics Ph.D.

CARNEGIE MELLON UNIVERSITY

**Degree Programs
By College and Department
Academic Year 1988-89**

**GRADUATE SCHOOL OF INDUSTRIAL
ADMINISTRATION**

Industrial Administration	M.S.I.A.
Industrial Administration, minor in Public Management & Policy (w/ SUPA)	M.S.I.A.
Industrial Administration	Ph.D.
Accounting	Ph.D.
Economics	Ph.D.
Financial Economics	Ph.D.
Information Systems	Ph.D.
Management of Manufacturing & Automation (w/ Robotics Institute)	Ph.D.
Manufacturing and Operations Systems	Ph.D.
Marketing	Ph.D.
Operations Research	Ph.D.
Organizational Psychology & Theory	Ph.D.
Politics and Political Economy	Ph.D.

SCHOOL OF URBAN AND PUBLIC AFFAIRS

Public Management & Policy	M.S.
Public Management & Policy, minor in Business Administration (w/ GSIA)	M.S.
Public Management & Policy & Juris Doctor (w/ U. of Pittsburgh)	M.S.
Urban Development & Management (w/ Architecture)	M.S.
Master of Arts Management (w/ CFA)	M.A.M.
Master of Philosophy	M.Phil.
Master of Public Management	M.P.M.
Public Policy Analysis	Ph.D.
Architecture & Public Policy Analysis (w/ Architecture)	Ph.D.
Political Economy (w/ GSIA and S.&D.S)	Ph.D.
Social Science & Public Policy Analysis (w/ S & D S.)	Ph.D.

SCHOOL OF COMPUTER SCIENCE

Software Engineering	M.S.
Computer Science	Ph.D.

CARNEGIE MELLON UNIVERSITY

**College and Department Accreditations
By College
Fall Semester 1988**

College/Department

Accreditation Agency

CARNEGIE MELLON UNIVERSITY

Middle States Association of Colleges and Schools
MSA

CARNEGIE INSTITUTE OF TECHNOLOGY

Accreditation Board for Engineering Technology
ABET

Chemical Engineering
Civil Engineering
Electrical and Computer Engineering
Mechanical Engineering
Metallurgical Engineering and Materials Science

COLLEGE OF FINE ARTS

Architecture

National Architectural Accrediting Board
NAAB

Art
Design

National Association of Schools of Art and Design
NASAD

Music

National Association of Schools of Music
NASM

COLLEGE OF HUMANITIES AND SOCIAL SCIENCES

Psychology

American Psychological Association
APA

MELLON COLLEGE OF SCIENCE

Chemistry

American Chemical Society
ACS

**GRADUATE SCHOOL OF INDUSTRIAL
ADMINISTRATION**

American Assembly of Collegiate Schools of Business
AACSB

SCHOOL OF URBAN AND PUBLIC AFFAIRS

National Association of Schools of Public Affairs and
Administration
NASPAA

CARNEGIE MELLON UNIVERSITY

Endowed and Named Professorships
By College
Fiscal Year 1988

CARNEGIE INSTITUTE OF TECHNOLOGY

Ahrens, Theodore Professorship of Engineering
Alcoa Professorship of Light Metals
Blenko Professorship
Brown, William J. Professorship
Buhl Professorship in Electrical Engineering
Gulf Oil Foundation Chair in Science and/or Engineering Disciplines
Ladd, George Tallman-Research Professorship
Mehl, R.F. Professor of Metallurgical Engineering & Materials Science
Mobay Professorship in Chemical Engineering
Posco Professorship
Swearingen, John E. Chair of Chemical Engineering
U.S. Steel Professor of Metallurgical Engineering & Materials Policy
Westinghouse, George Professorship of Engineering
Whitaker, U.A. & Helen Professorship of Electronics and Electrical Engineering

Appointee

Osterle, J. Fletcher
Howe, James M.
McMichael, Francis C.
Chigier, Norman A.
Milnes, Arthur G.
Visiting Professor
Not Filled
Aaronson, Hubert I.
Toor, Herbert
Fruehan, Richard J.
Westerberg, Arthur W.
Paxton, Harold W.
Casasent, David
Director, Stephen W.

COLLEGE OF FINE ARTS

Anathan, Bessie F. Professorship in Fine Arts
Fitzgibbon, T. David
Mellon, Andrew Professorship
Nierenberg Professorship of Design
Stubnitz, Dorothy L. Professorship

Anderson, Barbara J.B.
Not Filled
Saalman, Howard
Not Filled
Olds, Herbert

COLLEGE OF HUMANITIES AND SOCIAL SCIENCES

Baker, Thomas Stockham Professorship of English Literature
Bingham, Walter VanDyke Professor of Psychology and Computer Science
Falk, Maurice & Laura Foundation in Social Relations
Gregg, Lee and Marge Professor of Psychology
Hebb, D. O. Professor of Psychology
Heinz, Howard (Professor of the Humanities)
Savage, Leonard J. Professor of Statistics and Social Sciences

Steinberg, Erwin R.
Anderson, John R.
Fienberg, Stephen E.
Carpenter, Patricia A.
Just, Marcel A.
Stearns, Peter N.
Kadane, Joseph B.

MELLON COLLEGE OF SCIENCE

Alumni Professor of Biological Sciences
Buhl Professorship in Theoretical Physics
Stern, Otto Professorship (Physics Department Professorship)

Ho, Chien
Cutkosky, Richard E.
Griffiths, Robert B.

GRADUATE SCHOOL OF INDUSTRIAL ADMINISTRATION

Alumni Chair
BP America (Standard Oil) (1 year appointment)
Cyert, Richard M. Professorship
Ford Foundaton Distinguished Professorship
Heinz Chair in Graduate School of Industrial Administration
Higgins, James H. Chair
IBM Chair in Informaton Systems at GSIA
Morgenthaler, David T. & Lindsay J. Chair, Professor of Entrepreneurship
Xerox, Junior Faculty Research Chair (1 year appointment)
Xerox, Junior Faculty Research Chair (1 year appointment)
Xerox, Junior Faculty Research Chair (1 year appointment)

Balas, Egon
Bosschaerts, Peter L.
Sunder, Shyam
Meyers, Gerald C.
McCallum, Bennet T.
Lave, Lester B.
Thompson, Gerald L.
Thorne, John R.
Kekre, Sunder
Srikant, Datar
Mukhopadhyay, Tridas

SCHOOL OF URBAN AND PUBLIC AFFAIRS

Heinz, Hentry J.II, University Professorship of Urban Studies
Jonsson, Mr & Mrs. J.E. Professorship in SUPA

Not Filled
Blumstein, Alfred

CARNEGIE MELLON UNIVERSITY

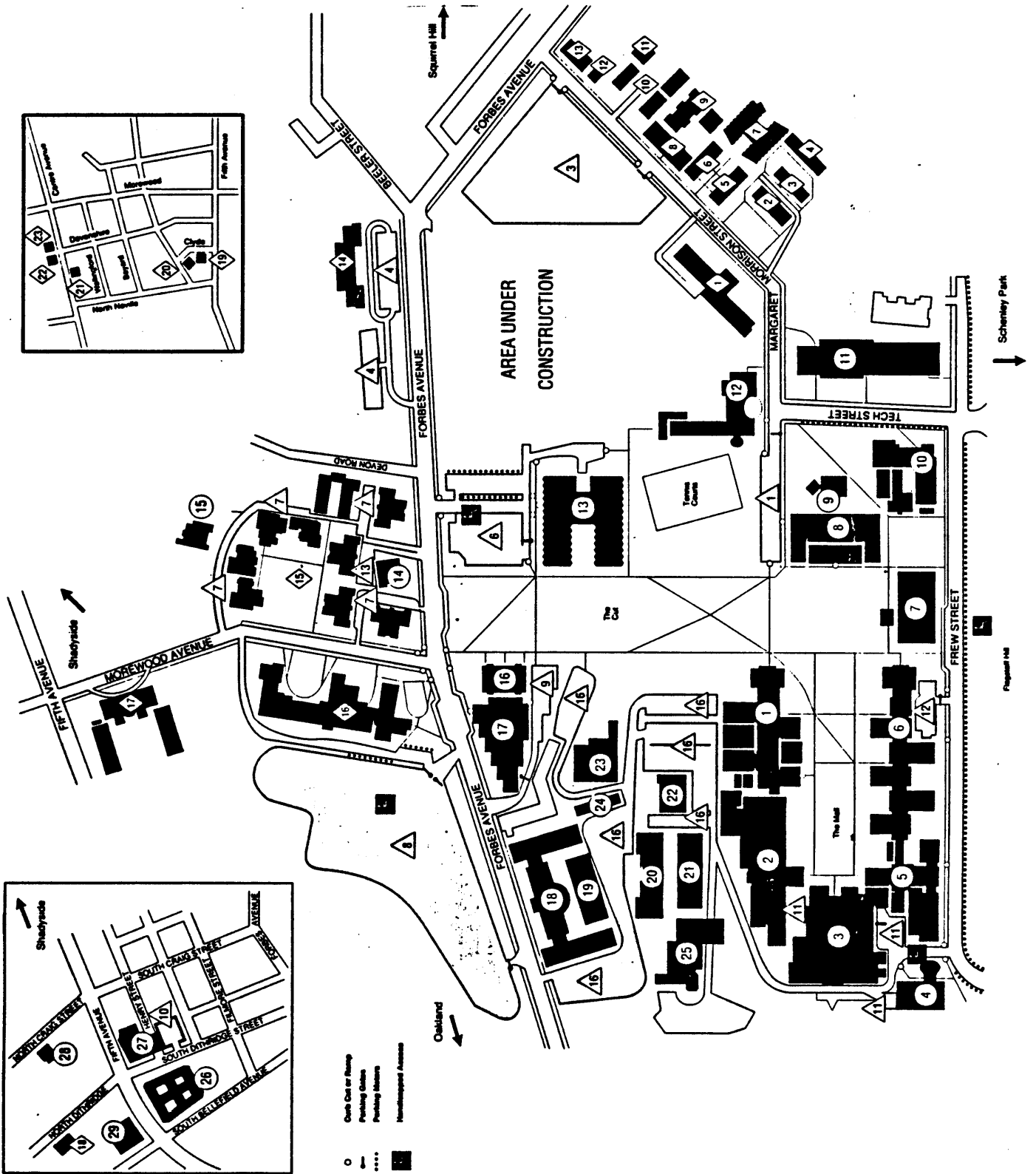
**Endowed and Named Professorships
By College
Fiscal Year 1988**

CARNEGIE MELLON UNIVERSITY

Cooper, William W. University Professorship
J.M. Olin Professor of Political Economy and Public Policy
John Christian Warner Professor of Natural Sciences
Mellon, R.K. Professor of Computer Science
R.M. Trueblood University Professor of Accounting and Economics
Sun Company University Professor
University Professor
University Professor
University Professor of Applied Science
University Professor of Computer Science
University Professor of Computer Science and Mathematical Logic
University Professor of Statistics and Industrial Administration
Whitaker, U.A. & Helen University Professor of Computer Science

Davis, Otto
Meltzer, Alan
Pople, John A.
Simon, Herbert A.
Ijiri, Yuji
Fenves, Stephen J.
Wolfenstein, Lincoln
Zener, Clarence
Mullins, William W.
Reddy, D. Raj
Scott, Dana S.
DeGroot, Morris H.
Newell, Allen

Current Campus Map, November 1988



CARNEGIE MELLON UNIVERSITY

**Current Campus Map
Building and Parking Listing
November, 1988**

ACADEMIC/ADMINISTRATION BUILDINGS ○

- 1 Doherty Hall
- 2 Wean Hall
- 3 Hamershiag Hall
- 4 Scalfe Hall
- 5 Porter Hall
- 6 Baker Hall
- 7 Hunt Library
- 8 College of Fine Arts
- 9 Studio Theatre
- 10 Graduate School of Industrial Administration
- 11 Gymnasium
- 12 Margaret Morrison Carnegie Hall
- 13 Skibo
- 14 5017 Forbes Avenue
- 15 Bramer House
- 16 Warner Hall
- 17 University Computing Center
- 18 Hamburg Hall
- 19 U.S. Bureau of Mines Building B
- 20 U.S. Bureau of Mines Building C
- 21 U.S. Bureau of Mines Building D
- 22 U.S. Bureau of Mines Building E
- 23 U.S. Bureau of Mines Building F
- 24 U.S. Bureau of Mines Building G
- 25 Physical Plant Building
- 26 Mellon Institute
- 27 Software Engineering Institute
- 28 College Club
- 29 Bellefield Towers

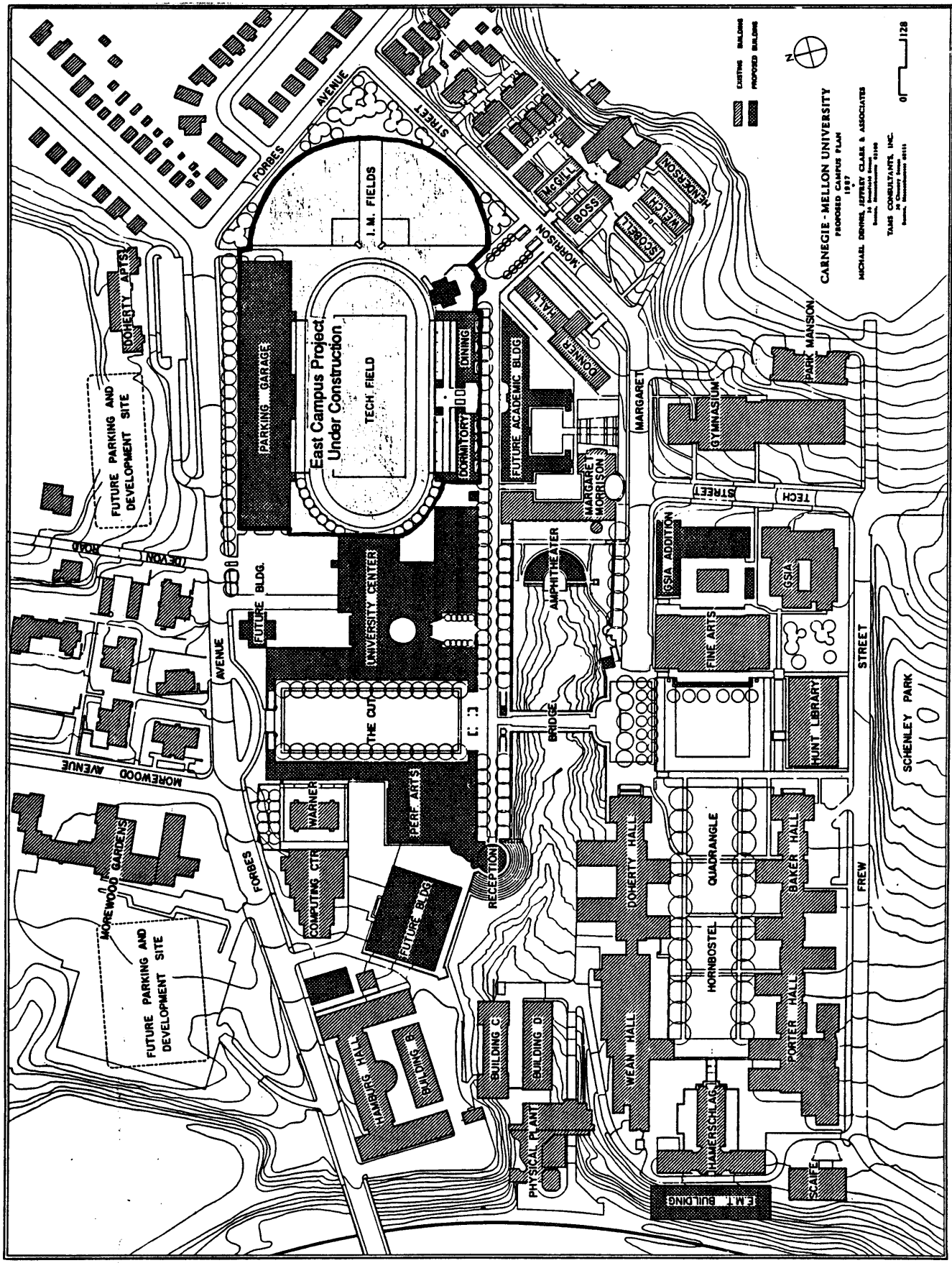
RESIDENCE BUILDINGS ◇

- 1 Donner Hall
- 2 Scobell Hall
- 3 Welch Hall
- 4 Henderson Hall
- 5 Boss Hall
- 6 McGill Hall
- 7 Hamershiag House
- 8 Margaret Morrison Sorority Houses
- 9 Margaret Morrison Plaza (street level)
- 10 Margaret Morrison Apartments
- 11 Roselawn Terrace
- 12 Tech House
- 13 Spirit House
- 14 Woodlawn Apartments
- 15 Doherty Apartments
- 16 Fraternity Quadrangle
- 17 Morewood Gardens
- 18 Mudge House
- 19 Shirley Apartments
- 20 630 Clyde Street
- 21 Marybelle Apartments
- 22 Hampshire Hall
- 23 Tudor Hall Apartments
- 24 Carol Apartments

PARKING AREAS △

- 1 Fine Arts
 - 3 Margaret Morrison
 - 4 Doherty
 - 6 Skibo B
 - 7 Fraternities
 - 8 Morewood
 - 9 Warner
 - 10 Porter-Hamershiag-Wean
 - 11 Baker
 - 12 5017 Forbes Avenue
 - 13 U.S. Bureau of Mines (Upper)
 - 16 Dithridge Street Garage
- UM** Metered Lots open to visitors and campus members with payment of meter fee.

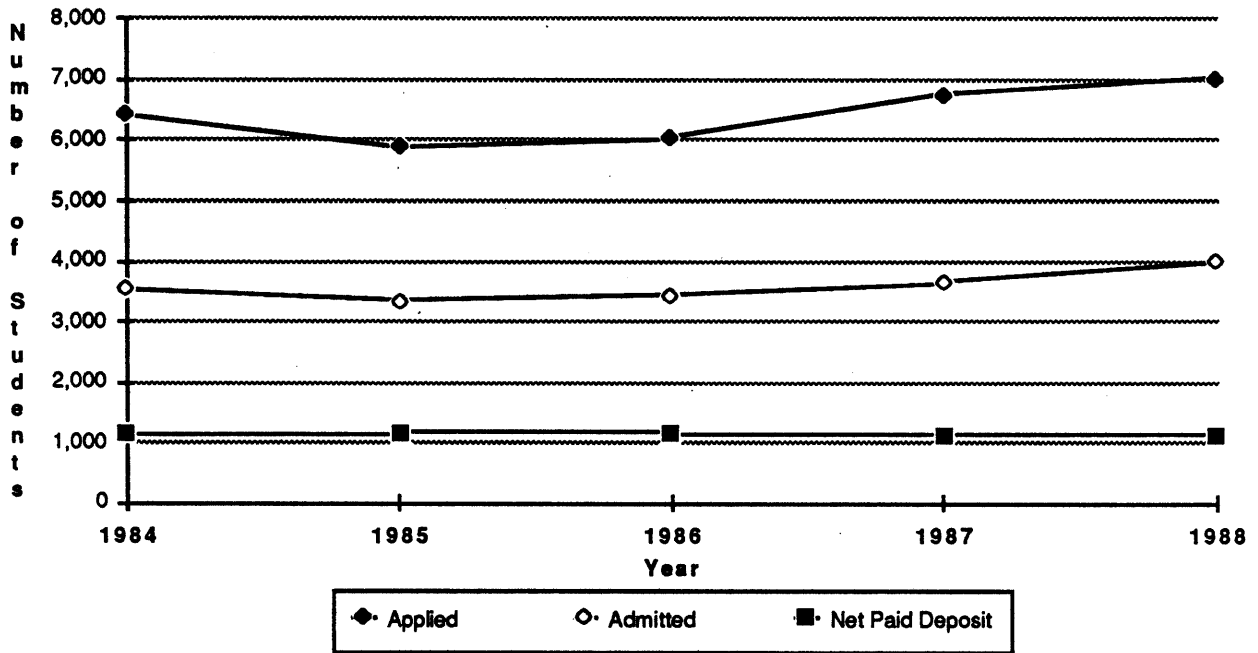
CARNEGIE MELLON UNIVERSITY
Proposed Campus Master Plan Map 1988



STUDENTS

CARNEGIE MELLON UNIVERSITY

**Freshman Applicant Activity
Entering Fall Semesters 1984 to 1988**

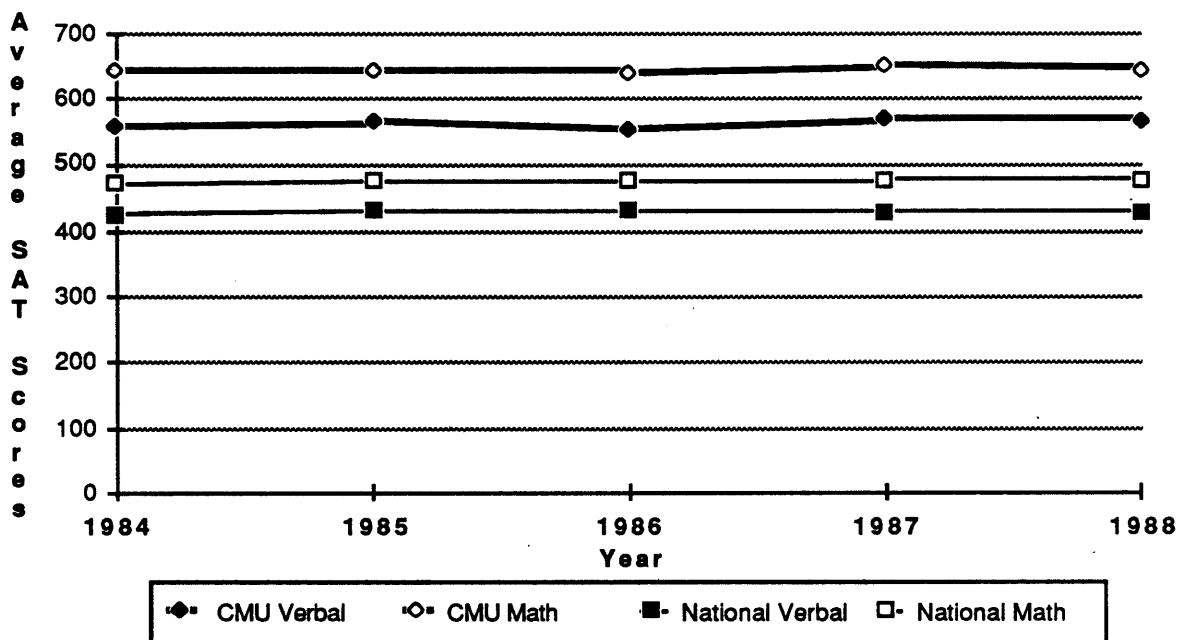


**Freshman Applicant Activity
By College
Entering Fall Semesters 1984 to 1988**

College	Applicant Activity	1984	1985	1986	1987	1988
CIT	Applied	2,634	2,451	2,365	2,501	2,304
	Admitted	1,160	1,139	1,109	1,080	1,213
	Net Paid Deposit	349	388	342	322	320
	Yield %	30%	34%	31%	30%	26%
CFA	Applied	1,078	1,133	1,283	1,462	1,680
	Admitted	525	498	593	661	667
	Net Paid Deposit	237	211	253	273	276
	Yield %	45%	42%	43%	41%	41%
H&SS	Applied	1,077	915	1,045	1,242	1,367
	Admitted	857	749	819	878	981
	Net Paid Deposit	262	257	266	251	238
	Yield %	31%	34%	32%	29%	24%
IM	Applied	333	257	304	319	409
	Admitted	180	163	161	171	199
	Net Paid Deposit	58	68	50	55	53
	Yield %	32%	42%	31%	32%	27%
MCS	Applied	1,318	1,133	1,046	1,233	1,264
	Admitted	834	797	765	859	930
	Net Paid Deposit	261	252	254	235	247
	Yield %	31%	32%	33%	27%	27%
CMU	Applied	6,440	5,889	6,043	6,757	7,024
	Admitted	3,556	3,346	3,447	3,649	3,990
	Net Paid Deposit	1,167	1,176	1,165	1,136	1,134
	Yield %	33%	35%	34%	31%	28%

CARNEGIE MELLON UNIVERSITY

**Freshman Average SAT Scores
CMU and National
Entering Fall Semesters 1984 to 1988**



**Freshman Average SAT Scores
By College
Entering Fall Semesters 1984 to 1988**

College		1984	1985	1986	1987	1988
CIT	Verbal	575	593	571	582	586
	Math	704	703	701	712	708
	Total	1,279	1,296	1,272	1,294	1,294
CFA	Verbal	523	517	517	538	530
	Math	554	562	560	572	572
	Total	1,077	1,079	1,077	1,110	1,102
H&SS	Verbal	557	561	560	577	562
	Math	603	593	597	624	614
	Total	1,160	1,154	1,157	1,201	1,176
IM	Verbal	549	554	544	554	571
	Math	643	627	648	641	645
	Total	1,192	1,181	1,192	1,195	1,216
MCS	Verbal	578	578	568	586	584
	Math	693	681	686	691	682
	Total	1,271	1,259	1,254	1,277	1,266
CMU	Verbal	560	567	555	570	567
	Math	646	645	642	652	647
	Total	1,206	1,212	1,197	1,222	1,214
National	Verbal	426	431	431	430	428
	Math	471	475	475	476	476
	Total	897	906	906	906	904

427
476
903

CARNEGIE MELLON UNIVERSITY

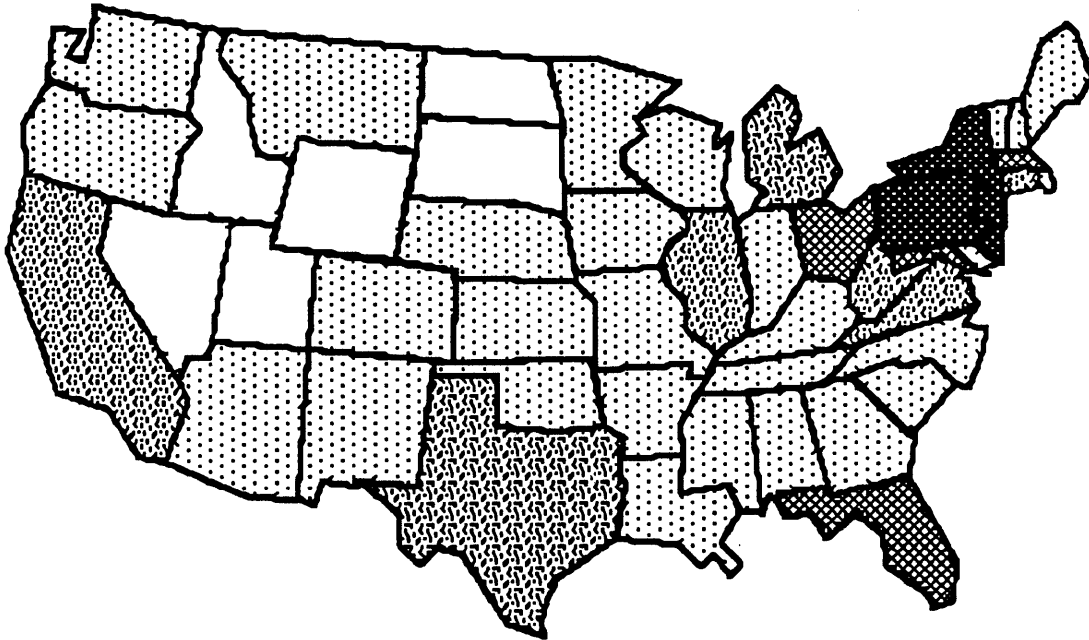
**Top Ten Competing Schools
Based on Application Overlap
Entering Freshman 1973 to 1988**

School	<u>Rank Each Year</u>								
	1973	1975	1976	1977	1980	1985	1986	1987	1988
Cornell	3	2	2	1	1	2	1	1	1
MIT	5	5	5	4	5	3	2	2	2
U of Penn	9	6	7	5	4	4	4	4	3
Penn State	1	1	1	2	3	5	5	6	4
Princeton	9	8	9	7	9	7	5	5	5
RPI	4	4	4	3	2	1	3	3	6
Harvard	**	**	**	**	**	19	19	8	7
Washington U	18	**	**	**	**	**	13	20	8
Boston U	12	**	11	11	10	10	10	11	9
Yale	8	12	13	14	**	13	21	7	10
Lehigh	7	9	6	8	6	6	7	10	11
Stanford	**	**	**	**	**	8	13	9	12
Northwestern	**	15	14	**	11	14	9	16	13
Brown	14	11	**	15	13	9	8	14	15
Syracuse	6	7	8	8	7	14	17	17	15
Pittsburgh	2	3	3	6	8	24	27	28	30
Case Western	13	9	10	10	10	26	20	26	34

** Not available among the ranked competitors for that year.

CARNEGIE MELLON UNIVERSITY

**Enrolled Freshmen
By Region and State
Entering Fall Semester 1988**



Region/State	UG	Region/State	UG	Region/State	UG	Region/State	UG
New England		South		Midwest		West	
Connecticut	29	Alabama	5	Illinois	23	Alaska	1
Maine	5	Florida	30	Indiana	4	Arizona	1
Massachusetts	47	Georgia	8	Iowa	6	California	21
New Hampshire	5	Kentucky	5	Kansas	5	Colorado	7
Rhode Island	3	Louisiana	6	Michigan	12	Hawaii	9
Vermont	5	Mississippi	1	Minnesota	5	Idaho	0
TOTAL	94	North Carolina	8	Missouri	8	Montana	1
Percent of Total	8%	South Carolina	7	Nebraska	4	Nevada	0
Middle States		Tennessee	7	North Dakota	0	Oregon	6
Delaware	1	Virginia	29	Ohio	56	Utah	0
District of Columbia	10	TOTAL	106	South Dakota	0	Washington	6
Maryland	69	Percent of Total	9%	West Virginia	21	Wyoming	0
New Jersey	100	Southwest		Wisconsin	4	TOTAL	52
New York	133	Arkansas	1	TOTAL	148	Percent of Total	5%
Pennsylvania	371	New Mexico	2	Percent of Total	13%	U.S. TOTAL	1,112
TOTAL	684	Oklahoma	2	U.S. Territories	0	Percent of Total	98%
Percent of Total	60%	Texas	20	Unknown	3	Foreign Countries	22
		TOTAL	25			TOTAL	1,134
		Percent of Total	2%				

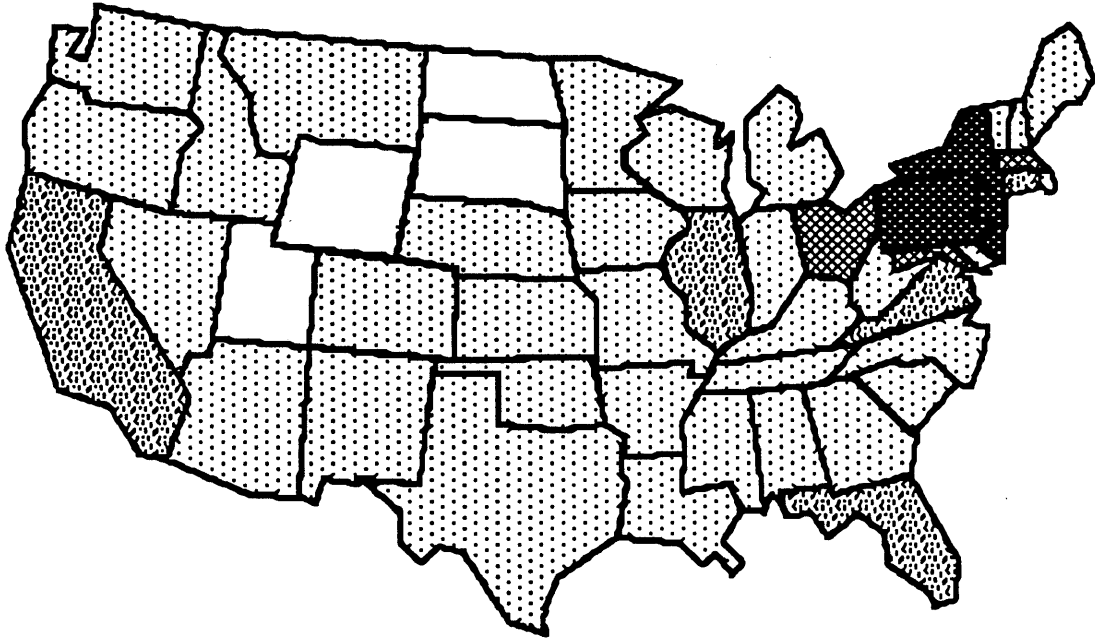
CARNEGIE MELLON UNIVERSITY

**Headcount Enrollment
By Department, Level and Status
Fall Semester 1988**

College	Department	Undergraduate			Graduate			Total Students		
		Full	Part	Total	Full	Part	Total	Full	Part	Total
CIT	Biomedical E.	0	0	0	4	0	4	4	0	4
	Chemical E.	133	1	134	63	27	90	196	28	224
	Civil E.	57	2	59	49	17	66	106	19	125
	E & C E.	379	17	396	210	24	234	589	41	630
	EPP	0	0	0	28	12	40	28	12	40
	Mfg. E.	0	0	0	2	1	3	2	1	3
	Mechanical E.	236	2	238	58	28	86	294	30	324
	MEMS	65	11	76	59	15	74	124	26	150
	Nuclear E.	0	0	0	0	1	1	0	1	1
	No Major Dept.	319	0	319	0	0	0	319	0	319
TOTAL CIT	1,189	33	1,222	473	125	598	1,662	158	1,820	
CFA	Architecture	236	11	247	50	18	68	286	29	315
	Art	203	14	217	8	3	11	211	17	228
	Design	185	11	196	0	2	2	185	13	198
	Drama	152	6	158	30	6	36	182	12	194
	Music	112	3	115	2	35	37	114	38	152
	TOTAL CFA	888	45	933	90	64	154	978	109	1,087
H&SS	Economics	62	1	63	0	0	0	62	1	63
	English	144	12	156	50	30	80	194	42	236
	History	43	3	46	20	47	67	63	50	113
	IM - H&SS	70	0	70	0	0	0	70	0	70
	Philosophy	11	1	12	4	3	7	15	4	19
	Psychology	37	2	39	26	5	31	63	7	70
	S & D S.	106	13	119	2	5	7	108	18	126
	Statistics	1	0	1	25	5	30	26	5	31
	Student Def'd	6	0	6	0	0	0	6	0	6
	No Major Dept.	547	8	555	0	0	0	547	8	555
TOTAL H&SS	1,027	40	1,067	127	95	222	1,154	135	1,289	
IM	221	4	225	0	0	0	221	4	225	
MCS	Biology	78	1	79	40	2	42	118	3	121
	Chemistry	59	0	59	38	16	54	97	16	113
	Math	288	25	313	43	7	50	331	32	363
	Physics	92	3	95	62	7	69	154	10	164
	No Major Dept.	247	0	247	1	0	1	248	0	248
TOTAL MCS	764	29	793	184	32	216	948	61	1,009	
SCS	0	0	0	155	10	165	155	10	165	
GSIA	0	0	0	492	177	669	492	177	669	
SUPA	19	0	19	170	326	496	189	326	515	
NON-DEGREE	0	0	0	0	0	0	7	207	214	
TOTAL	4,108	151	4,259	1,691	829	2,520	5,806	1,187	6,993	

CARNEGIE MELLON UNIVERSITY

**Undergraduate Headcount Enrollment
By Region and State
Fall Semester 1988**



Region/State	UG	Region/State	UG	Region/State	UG	Region/State	UG
New England		South		Midwest		West	
Connecticut	148	Alabama	11	Illinois	76	Alaska	3
Maine	22	Florida	78	Indiana	13	Arizona	3
Massachusetts	199	Georgia	26	Iowa	10	California	85
New Hampshire	22	Kentucky	13	Kansas	14	Colorado	37
Rhode Island	20	Louisiana	11	Michigan	33	Hawaii	24
Vermont	14	Mississippi	3	Minnesota	17	Idaho	3
TOTAL	425	North Carolina	24	Missouri	20	Montana	5
Percent of Total	10%	South Carolina	14	Nebraska	8	Nevada	2
		Tennessee	22	North Dakota	0	Oregon	19
Middle States		Virginia	117	Ohio	210	Utah	0
Delaware	9	TOTAL	319	South Dakota	0	Washington	20
District of Columbia	25	Percent of Total	7%	West Virginia	47	Wyoming	0
Maryland	229			Wisconsin	22	TOTAL	201
New Jersey	352	Southwest		TOTAL	470	Percent of Total	5%
New York	477	Arkansas	3	Percent of Total	11%		
Pennsylvania	1,569	New Mexico	8			U.S. TOTAL	4,163
TOTAL	2,661	Oklahoma	7	U.S. Territories	2	Percent of Total	98%
Percent of Total	62%	Texas	43			Foreign Countries	96
		TOTAL	61	Unknown	24	Percent of Total	2%
		Percent of Total	1%			TOTAL	4,259

CARNEGIE MELLON UNIVERSITY

**Headcount Enrollment
By Continent and Country of Citizenship
Fall Semester 1988**

Continent	Country	Undergraduate	Graduate	Special	Total
Africa	Egypt	0	2	0	2
	Libya	0	1	0	1
	Nigeria	0	1	0	1
	South Africa	0	5	0	5
	TOTAL	0	9	0	9
Asia	China (Peoples Republic)	0	90	1	91
	China (Taiwan)	1	51	1	53
	Hong Kong	11	7	0	18
	India	8	126	0	134
	Indonesia	2	9	0	11
	Iran	0	2	0	2
	Israel	0	10	0	10
	Japan	5	34	0	39
	Lebanon	2	3	0	5
	Malaysia	10	5	0	15
	Pakistan	1	1	0	2
	Philippines	2	5	0	7
	Saudi Arabia	0	1	0	1
	South Korea	7	42	0	49
	Thailand	2	4	0	6
Turkey	1	7	0	8	
TOTAL	52	397	2	451	
Australia	Australia	0	5	0	5
	New Zealand	0	1	0	1
	TOTAL	0	6	0	6
Europe	Austria	2	0	0	2
	Belgium	0	12	0	12
	Denmark	0	1	0	1
	France	2	10	0	12
	Greece	0	15	0	15
	Iceland	0	2	0	2
	Ireland	0	3	0	3
	Italy	2	9	0	11
	Netherlands	1	3	0	4
	Norway	0	2	0	2
	Poland	0	1	0	1
	Spain	0	16	0	16
	Sweden	1	0	0	1
	Switzerland	9	4	0	13
	United Kingdom	2	12	0	14
West Germany	1	9	0	10	
TOTAL	20	99	0	119	
Central/South America	Argentina	0	4	0	4
	Brazil	0	7	0	7
	Columbia	0	2	0	2
	Ecuador	1	1	0	2
	Mexico	1	9	0	10
	Peru	0	3	0	3
	Venezuela	0	2	0	2
TOTAL	2	28	0	30	
North America	Canada	5	34	0	39
Other	TOTAL	17	50	11	78
Total Non-US Citizens		96	623	13	732
Total US Citizens		4,163	1,897	201	6,261
TOTAL		4,259	2,520	214	6,993

CARNEGIE MELLON UNIVERSITY

**Headcount Enrollment
By Department, Level and Sex
Fall Semester 1988**

College	Department	Undergraduate			Graduate			Total Students		
		Male	Female	Total	Male	Female	Total	Male	Female	Total
CIT	Biomedical E.	0	0	0	1	3	4	1	3	4
	Chemical E.	101	33	134	64	26	90	165	59	224
	Civil E.	46	13	59	55	11	66	101	24	125
	E & C E.	363	33	396	214	20	234	577	53	630
	EPP	0	0	0	31	9	40	31	9	40
	Mfg. E.	0	0	0	3	0	3	3	0	3
	Mechanical E.	208	30	238	82	4	86	290	34	324
	MEMS	55	21	76	68	6	74	123	27	150
	Nuclear E.	0	0	0	1	0	1	0	0	1
	No Major Dept.	275	44	319	0	0	0	275	44	319
TOTAL CIT		1,048	174	1,222	519	79	598	1,567	253	1,820
CFA	Architecture	173	74	247	40	28	68	213	102	315
	Art	77	140	217	5	6	11	82	146	228
	Design	93	103	196	2	0	2	95	103	198
	Drama	94	64	158	19	17	36	113	81	194
	Music	52	63	115	17	20	37	69	83	152
	TOTAL CFA	489	444	933	83	71	154	572	515	1,087
H&SS	Economics	44	19	63	0	0	0	44	19	63
	English	54	102	156	31	49	80	85	151	236
	History	27	19	46	38	29	67	65	48	113
	IM - H&SS	49	21	70	0	0	0	49	21	70
	Philosophy	9	3	12	7	0	7	16	3	19
	Psychology	14	25	39	22	9	31	36	34	70
	S & D S.	75	44	119	5	2	7	80	46	126
	Statistics	1	0	1	20	10	30	21	10	31
	Student Def'd.	3	3	6	0	0	0	3	3	6
	No Major Dept.	322	233	555	0	0	0	322	233	555
TOTAL H&SS	598	469	1,067	123	99	222	721	568	1,289	
IM	153	72	225	0	0	0	153	72	225	
MCS	Biology	44	35	79	22	20	42	66	55	121
	Chemistry	37	22	59	41	13	54	78	35	113
	Math	263	50	313	41	9	50	304	59	363
	Physics	88	7	95	61	8	69	149	15	164
	No Major Dept.	194	53	247	1	0	1	195	53	248
TOTAL MCS	626	167	793	166	50	216	792	217	1,009	
SCS	0	0	0	137	28	165	137	28	165	
GSIA	0	0	0	529	140	669	529	140	669	
SUPA	11	8	19	240	256	496	251	264	515	
NON-DEGREE	0	0	0	0	0	0	104	110	214	
TOTAL	2,925	1,334	4,259	1,797	723	2,520	4,826	2,167	6,993	

214
4473 26

CARNEGIE MELLON UNIVERSITY

**Headcount Enrollment
By Department and Class
Fall Semester 1988**

College	Department	Undergraduate				Total	Graduate	Headcount	
		Fresh.	Soph.	Junr.	Senr.		Total	Total	
CIT	Biomedical E.	0	0	0	0	0	4	4	
	Chemical E.	0	50	37	47	134	90	224	
	Civil E.	0	17	22	20	59	66	125	
	E & C E.	0	141	113	142	396	234	630	
	EPP	0	0	0	0	0	40	40	
	Mfg. E.	0	0	0	0	0	3	3	
	Mechanical E.	0	79	77	82	238	86	324	
	MEMS	0	26	14	36	76	74	150	
	Nuclear E.	0	0	0	0	0	1	1	
	No Major Dept.	317	1	1	0	319	0	319	
	TOTAL CIT	317	314	264	327	1,222	598	1,820	
CFA	Architecture	78	60	43	66	247	68	315	
	Art	67	63	50	37	217	11	228	
	Design	58	48	54	36	196	2	198	
	Drama	64	39	29	26	158	36	194	
	Music	45	28	23	19	115	37	152	
		TOTAL CFA	312	238	199	184	933	154	1,087
	H&SS	Economics	0	0	28	35	63	0	63
English		0	1	80	75	156	80	236	
History		0	0	21	25	46	67	113	
IM - H&SS		38	32	0	0	70	0	70	
Philosophy		0	0	7	5	12	7	19	
Psychology		0	0	17	22	39	31	70	
S & D S.		0	0	50	69	119	7	126	
Statistics		0	0	1	0	1	30	31	
Student Def'd		0	0	0	6	6	0	6	
No Major Dept.		246	278	29	2	555	0	555	
	TOTAL H&SS	284	311	233	239	1,067	222	1,289	
	IM	17	20	86	102	225	0	225	
MCS	Biology	0	37	24	18	79	42	121	
	Chemistry	0	17	23	19	59	54	113	
	Math	0	89	108	116	313	50	363	
	Physics	0	37	31	27	95	69	164	
	No Major Dept.	246	1	0	0	247	1	248	
	TOTAL MCS	246	181	186	180	793	216	1,009	
SCS		0	0	0	0	0	165	165	
GSIA		0	0	0	0	0	669	669	
SUPA		0	0	1	18	19	496	515	
	NON-DEGREE	0	0	0	0	0	0	214	
TOTAL		1,176	1,064	969	1,050	4,259	2,520	6,993	

CARNEGIE MELLON UNIVERSITY

**Full-Time Equivalent (FTE) Enrollment
By Department and Class
Fall Semester 1988**

College	Department	Undergraduate				Total	Graduate	FTE
		Fresh.	Soph.	Junr.	Senr.		Total	Total
CIT	Biomedical E.	0.0	0.0	0.0	0.0	0.0	4.0	4.0
	Chemical E.	0.0	50.0	35.0	47.0	132.0	71.0	203.0
	Civil E.	0.0	17.0	22.0	18.6	57.6	54.0	111.6
	E & C E.	0.0	140.6	112.0	136.4	389.0	219.2	608.2
	EPP	0.0	0.0	0.0	0.0	0.0	30.4	30.4
	Mfg. E.	0.0	0.0	0.0	0.0	0.0	2.2	2.2
	Mechanical E.	0.0	79.0	77.0	81.0	237.0	67.6	304.6
	MEMS	0.0	26.0	13.0	27.7	66.7	61.8	128.5
	Nuclear E.	0.0	0.0	0.0	0.0	0.0	0.1	0.1
	No Major Dept.	317.0	1.0	0.0	0.0	318.0	0.0	318.0
TOTAL CIT	317.0	313.6	259.0	310.7	1,200.3	510.3	1,710.6	
CFA	Architecture	78.0	60.0	42.0	65.5	245.5	56.6	302.1
	Art	67.0	61.9	43.6	34.4	206.9	8.3	215.2
	Design	57.0	47.8	53.8	34.4	193.0	0.5	193.5
	Drama	62.8	39.0	29.0	26.0	156.8	34.0	190.8
	Music	45.0	28.0	21.8	19.0	113.8	21.6	135.4
	TOTAL CFA	309.8	236.7	190.2	179.3	916.0	121.0	1,037.0
H&SS	Economics	0.0	0.0	27.0	34.8	61.8	0.0	61.8
	English	0.0	1.0	77.5	70.9	149.4	55.9	205.3
	History	0.0	0.0	21.0	24.3	45.3	28.7	74.0
	IM - H&SS	38.0	32.0	0.0	0.0	70.0	0.0	70.0
	Philosophy	0.0	0.0	7.0	4.3	11.3	4.4	15.7
	Psychology	0.0	0.0	17.0	22.0	39.0	26.7	65.7
	S & D S.	0.0	0.0	50.0	65.3	115.3	4.4	119.7
	Statistics	0.0	0.0	1.0	0.0	1.0	25.7	26.7
	Student Def'd	0.0	0.0	0.0	6.0	6.0	0.0	6.0
	No Major Dept.	244.8	276.8	26.5	2.0	550.1	0.0	550.1
TOTAL H&SS	282.8	309.8	227.0	229.6	1,049.2	145.8	1,195.0	
IM	17.0	20.0	84.8	101.5	223.3	0.0	223.3	
MCS	Biology	0.0	37.0	24.0	17.8	78.8	40.4	119.2
	Chemistry	0.0	17.0	23.0	19.0	59.0	42.9	101.9
	Math	0.0	88.4	103.3	109.8	301.5	45.8	347.3
	Physics	0.0	37.0	29.0	27.0	93.0	63.7	156.7
	No Major Dept.	246.0	1.0	0.0	0.0	247.0	1.0	248.0
TOTAL MCS	246.0	180.4	179.3	173.6	779.3	193.8	973.1	
SCS	0.0	0.0	0.0	0.0	0.0	157.1	157.1	
GSIA	0.0	0.0	0.0	0.0	0.0	579.1	579.1	
SUPA	0.0	0.0	1.0	18.0	19.0	269.1	288.1	
NON-DEGREE	0.0	0.0	0.0	0.0	0.0	0.0	76.0	
TOTAL	1,172.6	1,060.5	941.3	1,012.7	4,187.1	1,976.2	6,239.3	

CARNEGIE MELLON UNIVERSITY

**Distribution of Students
By Housing Type, Level and Sex
Fall Semester 1988**

		Carnegie Mellon Housing				Non-CMU Housing	TOTAL
		On-Campus	Off-Campus	Fraternity & Sorority	Total		
Undergraduate							
Freshman							
Male		675	102	0	777	51	828
Female		328	10	1	339	9	348
TOTAL		1,003	112	1	1,116	60	1,176
Sophomore							
Male		400	62	190	652	76	728
Female		220	35	30	285	51	336
TOTAL		620	97	220	937	127	1,064
Junior							
Male		247	39	135	421	237	658
Female		162	16	25	203	108	311
TOTAL		409	55	160	624	345	969
Senior							
Male		157	30	95	282	429	711
Female		84	14	24	122	217	339
TOTAL		241	44	119	404	646	1,050
Undergraduate							
Male		1,479	233	420	2,132	793	2,925
Female		794	75	80	949	385	1,334
TOTAL		2,273	308	500	3,081	1,178	4,259
Graduate							
Male		4	4	0	8	1,789	1,797
Female		2	3	0	5	718	723
TOTAL		6	7	0	13	2,507	2,520
Non-Degree							
Male		0	0	0	0	104	104
Female		0	0	0	0	110	110
TOTAL		0	0	0	0	214	214
TOTAL							
Male		1,483	237	420	2,140	2,686	4,826
Female		796	78	80	954	1,213	2,167
TOTAL		2,279	315	500	3,094	3,899	6,993

CARNEGIE MELLON UNIVERSITY

**Headcount and FTE Enrollment
By College, Level and Status
Fall Semesters 1983 to 1988**

College	Status	1983			1984			1985		
		Underg.	Grad.	Total	Underg.	Grad.	Total	Underg.	Grad.	Total
CIT	Headcount									
	Full	1,396	403	1,799	1,315	423	1,738	1,361	451	1,812
	Part	29	170	199	37	148	185	42	141	183
	Total	1,425	573	1,998	1,352	571	1,923	1,403	592	1,995
FTE	1,393.3	455.4	1,848.7	1,324.0	475.4	1,799.4	1,375.6	501.6	1,877.2	
CFA	Headcount									
	Full	878	95	973	847	76	923	811	85	896
	Part	41	53	94	33	71	104	25	56	81
	Total	919	148	1,067	880	147	1,027	836	141	977
FTE	893.6	121.0	1,014.6	864.7	115.3	980.0	827.6	118.7	946.3	
H&SS	Headcount									
	Full	807	97	904	859	89	948	941	109	1,050
	Part	17	89	106	16	94	110	23	91	114
	Total	824	186	1,010	875	183	1,058	964	200	1,164
FTE	812.9	113.0	925.9	867.9	112.1	980.0	955.6	127.8	1,083.4	
IM	Headcount									
	Full	152	0	152	227	0	227	244	0	244
	Part	0	0	0	1	0	1	6	0	6
	Total	152	0	152	228	0	228	250	0	250
FTE	152.0	0.0	152.0	228.5	0.0	228.5	247.7	0.0	247.7	
MCS	Headcount									
	Full	828	172	1,000	857	194	1,051	860	212	1,072
	Part	28	15	43	26	21	47	33	15	48
	Total	856	187	1,043	883	215	1,098	893	227	1,120
FTE	838.8	177.3	1,016.1	867.9	201.4	1,069.3	879.4	217.3	1,096.7	
SCS	Headcount									
	Full	0	119	119	0	117	117	0	125	125
	Part	0	1	1	0	4	4	0	4	4
	Total	0	120	120	0	121	121	0	129	129
FTE	0.0	117.1	117.1	0.0	117.8	117.8	0.0	127.0	127.0	
GSIA	Headcount									
	Full	0	286	286	0	287	287	0	313	313
	Part	0	9	9	0	13	13	0	55	55
	Total	0	295	295	0	300	300	0	368	368
FTE	0.0	295.1	295.1	0.0	285.3	285.3	0.0	340.2	340.2	
SUPA	Headcount									
	Full	4	144	148	6	172	178	4	188	192
	Part	0	49	49	2	134	136	0	209	209
	Total	4	193	197	8	306	314	4	397	401
FTE	4.0	163.8	167.8	7.1	232.5	239.6	4.0	271.0	275.0	
TOTAL*	Headcount									
	Full	4,065	1,316	5,391	4,111	1,358	5,474	4,221	1,483	5,717
	Part	115	386	671	115	485	777	129	571	904
	Total	4,180	1,702	6,062	4,226	1,843	6,251	4,350	2,054	6,621
FTE	4,094.6	1,442.7	5,602.4	4,160.1	1,539.8	5,764.6	4,289.9	1,703.6	6,077.9	

*Total includes Non-Degree Headcount and FTE Enrollment

CARNEGIE MELLON UNIVERSITY

**Headcount and FTE Enrollment
By College, Level and Status
Fall Semesters 1983 to 1988**

College	Status	1986			1987			1988		
		Underg.	Grad.	Total	Underg.	Grad.	Total	Underg.	Grad.	Total
CIT	Headcount									
	Full	1,320	490	1,810	1,238	493	1,731	1,189	473	1,662
	Part	31	132	163	38	131	169	33	125	158
	Total	1,351	622	1,973	1,276	624	1,900	1,222	598	1,820
FTE	1,326.8	559.0	1,885.8	1,245.8	539.5	1,785.3	1,200.3	510.3	1,710.6	
CFA	Headcount									
	Full	814	88	902	878	87	965	888	90	978
	Part	41	54	95	45	59	104	45	64	109
	Total	855	142	997	923	146	1,069	933	154	1,087
FTE	839.5	115.8	955.3	906.1	117.3	1,023.4	916.0	121.0	1,037.0	
H&SS	Headcount									
	Full	952	103	1,055	985	119	1,104	1,027	127	1,154
	Part	37	92	129	31	91	122	40	95	135
	Total	989	195	1,184	1,016	210	1,226	1,067	222	1,289
FTE	975.5	120.1	1,095.6	1,000.8	137.5	1,138.3	1,049.2	145.8	1,195.0	
IM	Headcount									
	Full	241	0	241	241	0	241	221	0	221
	Part	6	0	6	4	0	4	4	0	4
	Total	247	0	247	245	0	245	225	0	225
FTE	243.3	0.0	243.3	242.9	0.0	242.9	223.3	0.0	223.3	
MCS	Headcount									
	Full	842	194	1,036	779	193	972	764	184	948
	Part	33	29	62	38	27	65	29	32	61
	Total	875	223	1,098	817	220	1,037	793	216	1,009
FTE	856.4	211.2	1,067.6	795.6	197.8	993.4	779.3	193.8	973.1	
SCS	Headcount									
	Full	0	140	140	0	161	161	0	155	155
	Part	0	5	5	0	4	4	0	10	10
	Total	0	145	145	0	165	165	0	165	165
FTE	0.0	148.9	148.9	0.0	163.2	163.2	0.0	157.1	157.1	
GSIA	Headcount									
	Full	0	332	332	0	413	413	0	492	492
	Part	1	116	117	0	162	162	0	177	177
	Total	1	448	449	0	575	575	0	669	669
FTE	0.6	391.2	391.8	0.0	492.3	492.3	0.0	579.1	579.1	
SUPA	Headcount									
	Full	2	161	163	12	146	158	19	170	189
	Part	0	282	282	1	326	327	0	326	326
	Total	2	443	445	13	472	485	19	496	515
FTE	2.0	257.3	259.3	13.0	258.8	271.8	19.0	269.1	288.1	
TOTAL*	Headcount									
	Full	4,171	1,508	5,685	4,133	1,612	5,749	4,108	1,691	5,806
	Part	149	710	1,067	157	800	1,167	151	829	1,187
	Total	4,320	2,218	6,752	4,290	2,412	6,916	4,259	2,520	6,993
FTE	4,244.1	1,803.5	6,123.4	4,204.2	1,906.4	6,182.2	4,187.1	1,976.2	6,239.3	

*Total includes Non-Degree Headcount and FTE Enrollment

CARNEGIE MELLON UNIVERSITY

**Retention, Graduation and Persistence Rates
Entering Classes Fall 1980 to Fall 1983**

	<u>Entering Class Fall 1980</u>		<u>Entering Class Fall 1981</u>		<u>Entering Class Fall 1982</u>		<u>Entering Class Fall 1983</u>	
	Percent Enrolled	Percent Graduated	Percent Enrolled	Percent Graduated	Percent Enrolled	Percent Graduated	Percent Enrolled	Percent Graduated
Retention								
Entering Class	100%	0%	100%	0%	100%	0%	100%	0%
Fall 1 to Fall 2	88%	0%	85%	0%	85%	0%	87%	0%
Fall 2 to Fall 3	76%	0%	71%	0%	74%	0%	77%	0%
Fall 3 to Fall 4	70%	2%	68%	1%	71%	1%	74%	1%
Fall 4 to Fall 5	13%	56%	17%	51%	14%	54%	15%	57%
Fall 5 to Fall 6	4%	9%	6%	10%	4%	10%	4%	11%
Total Graduates (Before Fall 6)		67%		62%		65%		69%
Overall Persistence* (to Fall 6)		71%		68%		69%		73%

**Overall Persistence* Rates
By Undergraduate College/Department
Entering Classes Fall 1980 to Fall 1983**

College/Dept.	<u>Entering Class Fall 1980</u>	<u>Entering Class Fall 1981</u>	<u>Entering Class Fall 1982</u>	<u>Entering Class Fall 1983</u>
	Percent	Percent	Percent	Percent
CIT	77%	76%	75%	81%
CFA	64%	57%	59%	62%
H&SS	69%	64%	71%	68%
IM	72%	74%	81%	81%
MCS	69%	69%	64%	76%

*Overall Persistence is the sum of students who remain actively enrolled (retention) plus students who have graduated.

CARNEGIE MELLON UNIVERSITY

**Total Degrees Granted
By Department and Level
Academic Year 1987-88**

College		Bachelors	Masters	Doctorates	TOTAL
	Department				
CIT	Biomed. E.	0	2	2	4
	Chemical E.	38	11	11	60
	Civil E.	25	20	5	50
	E & C E.	124	57	22	203
	E. & P P	0	6	4	10
	Mfg. E.	0	7	0	7
	Mechanical E.	75	17	9	101
	MEMS	27	16	8	51
	Nuclear E.	0	0	0	0
	TOTAL CIT	289	136	61	486
CFA	Architecture	43	26	1	70
	Art	59	7	0	66
	Design	39	2	0	41
	Drama	31	10	0	41
	Music	10	8	0	18
		TOTAL CFA	182	53	1
H&SS	Economics	46	0	0	46
	English	54	16	8	78
	History	14	6	8	28
	Philosophy	1	0	0	1
	Psychology	17	3	4	24
	S & D S.	63	1	0	64
	Statistics	1	10	2	13
	Student Defined	3	0	0	3
	TOTAL H&SS	199	36	22	257
	IM	90	0	0	90
MCS	Biology	26	1	6	33
	Chemistry	21	2	10	33
	Math	133	6	5	144
	Physics	18	13	9	40
		TOTAL MCS	198	22	30
SCS		0	12	15	27
GSIA		0	186	10	196
SUPA		0	157	4	161
TOTAL		958	602	143	1,703

CARNEGIE MELLON UNIVERSITY

**Total Degrees Granted
By College and Level
Academic Years 1983-84 to 1987-88**

College		1983-84	1984-85	1985-86	1986-87	1987-88
Degrees						
CIT	Bachelors	324	277	271	305	289
	Masters	117	155	131	148	136
	Doctorates	40	58	51	44	61
	TOTAL CIT	481	490	453	497	486
CFA	Bachelors	207	188	152	146	182
	Masters	27	45	47	37	53
	Doctorates	1	0	0	0	1
	TOTAL CFA	235	233	199	183	236
H&SS	Bachelors	132	152	167	160	199
	Masters	30	37	39	48	36
	Doctorates	15	18	19	17	22
	TOTAL H&SS	177	207	225	225	257
IM	Bachelors	51	72	88	94	90
	TOTAL IM	51	72	88	94	90
MCS	Bachelors	150	160	181	205	198
	Masters	40	30	46	36	22
	Doctorates	20	22	26	21	30
	TOTAL MCS	210	212	253	262	250
SCS	Masters	10	4	9	7	12
	Doctorates	9	15	11	11	15
	TOTAL CS	19	19	20	18	27
GSIA	Masters	121	134	129	152	186
	Doctorates	10	10	5	13	10
	TOTAL GSIA	131	144	134	165	196
SUPA	Masters	53	92	150	177	157
	Doctorates	1	2	3	4	4
	TOTAL SUPA	54	94	153	181	161
CMU	Bachelors	864	849	859	910	958
	Masters	398	497	551	605	602
	Doctorates	96	125	115	110	143
	TOTAL	1,358	1,471	1,525	1,625	1,703

TEACHING AND ACADEMIC SUPPORT

CARNEGIE MELLON UNIVERSITY

**Units Taught
By Department, Semester and Level
Academic Year 1987-88**

College	Department	Fall Semester				Spring Semester				YEAR TOTAL
		Underg.	Grad.	Other	Total	Underg.	Grad.	Other	Total	
CIT	Biomedical E.	405	33	9	447	792	90	39	921	1,368
	Chemical E.	3,255	3,275	0	6,530	1,997	2,834	9	4,840	11,370
	Civil E.	2,517	2,287	54	4,858	1,920	2,281	27	4,228	9,086
	E & C E.	8,622	9,437	363	18,422	10,035	9,535	363	19,933	38,355
	EPP	2,454	764	9	3,227	2,136	557	9	2,702	5,929
	Mechanical E.	8,178	3,266	52	11,496	6,517	3,208	30	9,755	21,251
	MEMS	2,558	3,131	9	5,698	2,857	3,110	9	5,976	11,674
	Nuclear E.	0	10	0	10	0	10	0	10	20
	Mfg. E.	1,370	276	0	1,646	2,180	321	0	2,501	4,147
	TOTAL CIT	29,359	22,479	496	52,334	28,434	21,946	486	50,866	103,200
CFA	Architecture	8,697	2,070	9	10,776	8,049	1,834	15	9,898	20,674
	Art	9,853	441	71	10,365	9,121	486	71	9,678	20,043
	Design	6,927	46	57	7,030	6,689	203	18	6,910	13,940
	Drama	6,713	1,272	63	8,048	7,126	1,417	15	8,558	16,606
	Music	7,653	729	51	8,433	7,473	738	33	8,244	16,677
	Interdiscp.	1,008	108	36	1,152	1,605	60	51	1,716	2,868
	TOTAL CFA	40,851	4,666	287	45,804	40,063	4,738	203	45,004	90,808
	H&SS	English	11,865	1,985	225	14,075	13,485	1,631	180	15,296
History		13,789	1,091	309	15,189	14,933	1,072	393	16,398	31,587
Philosophy		5,133	153	195	5,481	4,716	330	162	5,208	10,689
Psychology		8,175	1,581	233	9,989	6,763	1,389	218	8,370	18,359
S & D S.		8,432	263	9	8,704	6,384	182	18	6,584	15,288
Statistics		5,871	1,734	21	7,626	3,774	1,362	0	5,136	12,762
Interdiscp.		27	0	0	27	243	0	0	243	270
TOTAL H&SS		53,292	6,807	992	61,091	50,298	5,966	971	57,235	118,326
MCS	Biology	4,144	1,556	55	5,755	2,678	1,494	9	4,181	9,936
	Chemistry	8,510	2,115	37	10,662	5,469	1,805	53	7,327	17,989
	Math	19,927	1,898	168	21,993	16,980	1,670	141	18,791	40,784
	Physics	11,606	2,773	39	14,418	9,857	2,512	73	12,442	26,860
	Interdiscp.	0	0	0	0	9	72	0	81	81
	TOTAL MCS	44,187	8,342	299	52,828	34,993	7,553	276	42,822	95,650
SCS		7,471	6,606	299	14,376	10,113	6,290	263	16,666	31,042
GSIA	Economics	9,297	18	27	9,342	8,613	9	27	8,649	17,991
	IM	8,763	54	81	8,898	11,250	90	72	11,412	20,310
	GSIA	78	25,997	120	26,195	222	24,525	204	24,951	51,146
	TOTAL GSIA	18,138	26,069	228	44,435	20,085	24,624	303	45,012	89,447
SUPA		594	13,271	132	13,997	660	12,909	75	13,644	27,641
OTHER		5,012	102	36	5,150	2,813	229	137	3,179	8,329
TOTAL		198,904	88,342	2,769	290,015	187,459	84,255	2,714	274,428	564,443

CARNEGIE MELLON UNIVERSITY

**Units Taught
By College and Level
Academic Years 1983-84 to 1987-88**

College	Level	1983-84	1984-85	1985-86	1986-87	1987-88
CIT	Undergraduate	61,353	59,908	60,179	60,749	57,793
	Graduate	38,663	38,722	41,359	44,342	44,425
	Other	993	1,033	1,117	803	982
	TOTAL CIT	101,009	99,663	102,655	105,894	103,200
CFA	Undergraduate	70,867	68,303	67,801	70,368	80,914
	Graduate	10,669	9,765	9,924	9,978	9,404
	Other	393	471	564	683	490
	TOTAL CFA	81,929	78,539	78,289	81,029	90,808
H&SS	Undergraduate	93,673	97,935	100,705	104,656	103,590
	Graduate	10,764	10,337	10,441	10,597	12,773
	Other	1,503	1,394	1,626	1,920	1,963
	TOTAL H&SS	105,940	109,666	112,772	117,173	118,326
MCS	Undergraduate	93,863	91,296	91,478	85,784	79,180
	Graduate	15,271	17,048	17,890	16,571	15,895
	Other	1,114	852	789	583	575
	TOTAL MCS	110,248	109,196	110,157	102,938	95,650
SCS	Undergraduate	17,951	18,371	19,430	20,568	17,584
	Graduate	9,183	9,509	10,219	11,230	12,896
	Other	600	726	541	736	562
	TOTAL CS	27,734	28,606	30,190	32,534	31,042
GSIA	Undergraduate	27,503	34,554	37,347	36,483	38,223
	Graduate	31,939	32,190	37,480	40,674	50,693
	Other	361	507	294	540	531
	TOTAL GSIA	59,803	67,251	75,121	77,697	89,447
SUPA	Undergraduate	570	741	480	738	1,254
	Graduate	17,212	24,519	27,885	26,295	26,180
	Other	57	111	288	333	207
	TOTAL SUPA	17,839	25,371	28,653	27,366	27,641
OTHER	Undergraduate	3,703	3,546	8,199	7,487	7,825
	Graduate	166	210	241	222	331
	Other	80	60	164	159	173
	TOTAL OTHER	3,949	3,816	8,604	7,868	8,329
CMU	Undergraduate	369,483	374,654	385,619	386,833	386,363
	Graduate	133,867	142,300	155,439	159,909	172,597
	Other	5,101	5,154	5,383	5,757	5,483
TOTAL	508,451	522,108	546,441	552,499	564,443	

CARNEGIE MELLON UNIVERSITY

Library Collections and Resources Fiscal Years 1984 and 1988

Type of Material	1985	1988
Books, Bound Serials and Government Documents*	662,483	716,403
Current Subscriptions--Periodicals, Newspapers and Government Documents **	3,001	3,332
Microforms--Books, Serial Titles, Government Documents **	364,075	498,974
Graphic Materials*	127,305	171,525
Audio Materials **	11,043	12,319
Video Materials **	124	547
Machine Readable Materials **	-	240
Other Library Materials **	-	25,070

*number of volumes/units.

**unduplicated count of titles.

Computerized Library Resources Academic Year 1988-89

LS/2000 is a computerized catalog and circulation system that provides online access to the majority of the libraries' holdings for books, journals, technical reports, government documents, musical scores, sound recordings and educational software.

LIS--Library Information System, contains 13 databases:

Announcements	CMU Library hours and information.
ArchPics	Architectural illustrations of more than 3,000 modern buildings.
Bibliographies	CMU Reference Bibliographies.
Computer Database	Index to 90 journals on computers, telecommunications and electronics. 1986 to the present.
Dictionary	The American Heritage Dictionary, 1985. New York: Houghton Mifflin.
Encyclopedia	Full text of the Academic American Encyclopedia.
ICPSR Guide	The annual ICPSR (Inter-university Consortium for Political and Social Science Research) Guide to Resources and Services, an index to the Consortium's social science data archive.
Journal List	Journal titles owned by CMU Libraries.
Library Catalog	Current holdings of all CMU Libraries.
Magazine Index	Index to more than 435 popular magazines in the areas of current affairs, education, general business and economics, medicine, the performing arts and literature. 1982 to the present.
Management Contents	Index to over 90 management journals in the areas of finance, accounting, and labor. 1986 to the present.
Newspaper Index	Index to 5 national newspapers. 1985 to the present.
Trade & Industry	Index to business, trade and industry journals in the areas of construction, transportation, utilities and insurance. 1983 to the present.
Who's Who at CMU	Faculty/Staff/Student Directory.

CARNEGIE MELLON UNIVERSITY

Teaching Additional Facts and Figures

Units Taken at PCHE Colleges* by CMU Students, by Level and College Units Taught to PCHE Students, by College Academic Year 1987-88

Major/College	Units Taken			Units Taught
	Undergraduate	Graduate	Total	
CIT	330	45	375	201
CFA	378	153	531	60
H&SS	749	144	893	447
MCS	305	60	365	107
IM	183	0	183	---
CS	0	33	3	56
GSIA	0	84	84	168
SUPA	36	93	129	63
OTHER	---	---	---	23
TOTAL	1,981	612	2,593	1,125

***Pittsburgh Council of Higher Education (PCHE) Colleges:**

Allegheny Community College	Duquesne University	Pittsburgh Theological Sem.
Carlow College*	La Roche College	Robert Morris College
Chatham College*	Point Park College*	University of Pittsburgh*

*Units Taken by CMU Students.

The University Teaching Center

The University Teaching Center, initiated in January 1982, conducts eleven programs. Most of these are conducted by faculty members, assisted by Center personnel. The programs are as follows.

For Faculty Members:

- Consultations about Faculty Course Evaluations.
- Assistance to faculty members in obtaining feedback from students.
- Videotaping services--providing taping and confidential critiques of classroom teaching
- Trouble shooting.
- Faculty Luncheon Seminars on Teaching--six to eight each fall.
- Faculty/Student Luncheon Seminars--six to eight each spring.
- A publication series on University Teaching.
- Publication of *About Teaching at Carnegie Mellon: A Handbook*.
- Supervision of the Educational Facilities Committee which oversees classroom renovations.

For Graduate Students:

- Workshops for Teaching Assistants.
- Assistance to departments which are developing teaching components of Ph.D. programs.

FACULTY AND STAFF

CARNEGIE MELLON UNIVERSITY

**Full-Time Employees*
By Division and Job Category
Fall 1988**

Division	Job Category									TOTAL
	Admin.	Reg. Faculty	Spec. Faculty	T. Instr.	Other Resrch	Profsnl.	Sec./ Cler.	Tech./ Parap.	Other	
President	5	2.00	1	0	0	2	8	0	1	19
Provost										
CIT	24	108.95	5	0	50	3	48	21	8	268
CFA	8	90.50	15	0	8	0	17	9	0	148
H&SS	13	97.75	8	8	23	14	31	19	0	214
MCS	25	92.30	5	0	93	11	25	37	2	290
SCS	15	35.00	8	0	209	3	31	12	0	313
GSIA	28	68.92	7	0	2	3	35	7	0	151
SUPA	11	22.58	2	0	4	1	20	2	0	63
MI	31	0.00	0	0	44	2	18	14	0	109
SEI	21	0.00	0	1	107	8	26	5	2	170
Other	7	8.00	2	0	5	6	14	0	0	42
TOTAL	183	524.00	52	9	545	51	265	126	12	1,767
VP Academic Services										
Assoc. VP	9	0.00	2	13	2	3	30	3	0	62
Other	31	0.00	0	7	14	54	20	28	1	155
TOTAL	40	0.00	2	20	16	57	50	31	1	217
VP Business Affairs										
Aux. Svcs.	26	0.00	0	11	0	8	27	15	52	139
Phys. Plant	13	0.00	0	0	0	19	23	4	102	161
Other	18	0.00	0	0	0	17	41	1	45	122
TOTAL	57	0.00	0	11	0	44	91	20	199	422
VP Development	28	0.00	0	0	0	4	19	0	0	51
VP Enrollment	49	1.00	1	14	0	9	42	0	0	116
VP University Planning	7	0.00	0	0	3	33	2	0	0	45
VP University Relations	8	0.00	0	0	0	11	17	6	0	42
TOTAL	377	527	56	54	564	211	494	183	213	2,679

*Including employees on Leave; excluding Visiting Faculty.

CARNEGIE MELLON - UNIVERSITY

**Total Teaching Faculty
By Department, Category and Status
Fall Semester 1988**

College		Regular Faculty	Special Teaching Faculty*			TOTAL TEACHING FACULTY		
		Full	Full	Part	Total	Full	Part	Total
CIT	Biomedical E.	1.00	1.00	3.00	4.00	2.00	3.00	5.00
	Chemical E.	16.50	2.00	1.00	3.00	18.50	1.00	19.50
	Civil E.	14.50	0.00	1.00	1.00	14.50	1.00	15.50
	E & C E.	30.70	2.00	0.00	2.00	32.70	0.00	32.70
	EPP	8.65	0.00	2.00	2.00	8.65	2.00	10.65
	Mechanical E.	21.10	1.00	2.00	3.00	22.10	2.00	24.10
	MEMS	16.50	0.00	3.00	3.00	16.50	3.00	19.50
	Dean's Ofc.	0.00	0.00	0.00	0.00	0.00	0.00	0.00
	TOTAL CIT	108.95	6.00	12.00	18.00	114.95	12.00	126.95
CFA	Architecture	19.50	1.00	18.00	19.00	20.50	18.00	38.50
	Art	20.00	1.00	18.00	19.00	21.00	18.00	39.00
	Design	14.00	1.00	3.00	4.00	15.00	3.00	18.00
	Drama	21.00	7.00	1.00	8.00	28.00	1.00	29.00
	Music	15.00	10.00	36.00	46.00	25.00	36.00	61.00
	Dean's Ofc.	1.00	1.00	1.00	2.00	2.00	1.00	3.00
	Pre-Col. Mus.	0.00	0.00	26.00	26.00	0.00	26.00	26.00
		TOTAL CFA	90.50	21.00	103.00	124.00	111.50	103.00
H&SS	English	25.00	5.00	4.00	9.00	30.00	4.00	34.00
	History	23.25	3.00	4.00	7.00	26.25	4.00	30.25
	Philosophy	10.00	0.00	5.00	5.00	10.00	5.00	15.00
	Psychology	17.00	0.00	3.00	3.00	17.00	3.00	20.00
	S & D S.	13.50	2.00	1.00	3.00	15.50	1.00	16.50
	Statistics	8.50	2.00	0.00	2.00	10.50	0.00	10.50
	Dean's Ofc.	0.50	0.00	0.00	0.00	0.50	0.00	0.50
		TOTAL H&SS	97.75	12.00	17.00	29.00	109.75	17.00
MCS	Biology	18.50	2.00	1.00	3.00	20.50	1.00	21.50
	Chemistry	21.00	2.00	2.00	4.00	23.00	2.00	25.00
	Math	19.50	10.00	0.00	10.00	29.50	0.00	29.50
	Physics	31.80	2.00	0.00	2.00	33.80	0.00	33.80
	Dean's Ofc.	1.50	0.00	0.00	0.00	1.50	0.00	1.50
		TOTAL MCS	92.30	16.00	3.00	19.00	108.30	3.00
SCS		35.00	9.00	1.00	10.00	44.00	1.00	45.00
GSIA		68.92	16.00	11.00	27.00	84.92	11.00	95.92
SUPA		22.58	3.00	11.00	14.00	25.58	11.00	36.58
OTHER		11.00	6.00	0.00	6.00	17.00	0.00	17.00
TOTAL		527.00	89.00	158.00	247.00	616.00	158.00	774.00

*Excluding Administrators with Special Faculty Appointments; including Faculty Emeritus.

CARNEGIE MELLON UNIVERSITY

**Full-Time Regular Faculty
By Rank and Department
Fall Semester 1988**

College		University Professor	Professor	Associate Professor	Assistant Professor	Instructor	TOTAL
Department							
CIT	Biomedical E.	0.00	1.00	0.00	0.00	0.00	1.00
	Chemical E.	0.00	10.00	4.50	2.00	0.00	16.50
	Civil E.	1.00	7.50	2.00	4.00	0.00	14.50
	E & C E.	0.00	13.70	9.00	8.00	0.00	30.70
	EPP	0.00	3.90	3.25	1.50	0.00	8.65
	Mechanical E.	0.00	10.10	4.00	7.00	0.00	21.10
	MEMS	1.00	9.50	3.00	3.00	0.00	16.50
	Dean's Ofc.	0.00	0.00	0.00	0.00	0.00	0.00
	TOTAL CIT	2.00	55.70	25.75	25.50	0.00	108.95
CFA	Architecture	0.00	7.00	4.50	7.00	1.00	19.50
	Art	0.00	7.00	11.00	2.00	0.00	20.00
	Design	0.00	2.00	7.00	5.00	0.00	14.00
	Drama	0.00	5.00	3.00	12.00	1.00	21.00
	Music	0.00	8.00	3.00	4.00	0.00	15.00
	Dean's Ofc.	0.00	1.00	0.00	0.00	0.00	1.00
	TOTAL CFA	0.00	30.00	28.50	30.00	2.00	90.50
H&SS	English	0.00	6.00	11.00	8.00	0.00	25.00
	History	0.00	9.75	7.00	6.50	0.00	23.25
	Philosophy	0.00	2.00	3.00	5.00	0.00	10.00
	Psychology	1.00	10.00	2.50	3.50	0.00	17.00
	S & D S.	0.50	3.00	8.00	2.00	0.00	13.50
	Statistics	1.00	2.50	3.00	2.00	0.00	8.50
	Dean's Ofc.	0.00	0.50	0.00	0.00	0.00	0.50
	TOTAL H&SS	2.50	33.75	34.50	27.00	0.00	97.75
MCS	Biology	0.00	7.50	7.00	4.00	0.00	18.50
	Chemistry	1.00	10.00	4.00	6.00	0.00	21.00
	Math	0.00	13.50	3.00	3.00	0.00	19.50
	Physics	1.00	21.80	3.00	6.00	0.00	31.80
	Dean's Ofc.	0.00	1.50	0.00	0.00	0.00	1.50
	TOTAL MCS	2.00	54.30	17.00	19.00	0.00	92.30
SCS	3.00	8.50	12.00	11.50	0.00	35.00	
GSIA	2.00	22.17	13.25	29.50	2.00	68.92	
SUPA	0.50	6.08	5.50	9.50	1.00	22.58	
OTHER	0.00	8.50	2.50	0.00	0.00	11.00	
TOTAL		12.00	219.00	139.00	152.00	5.00	527.00

CARNEGIE MELLON UNIVERSITY

**Full-Time Regular Faculty
By Tenure Status and Department
Fall Semester 1988**

College Department		Tenured	Tenure Stream	Instructors	TOTAL
CIT	Biomedical E.	1.00	0.00	0.00	1.00
	Chemical E.	10.00	6.50	0.00	16.50
	Civil E.	9.00	5.50	0.00	14.50
	E & C E.	14.70	16.00	0.00	30.70
	EPP	4.65	4.00	0.00	8.65
	Mechanical E.	10.10	11.00	0.00	21.10
	MEMS	10.50	6.00	0.00	16.50
	Dean's Ofc.	0.00	0.00	0.00	0.00
	TOTAL CIT	59.95	49.00	0.00	108.95
CFA	Architecture	7.50	11.00	1.00	19.50
	Art	12.00	8.00	0.00	20.00
	Design	6.00	8.00	0.00	14.00
	Drama	5.00	15.00	1.00	21.00
	Music	8.00	7.00	0.00	15.00
	Dean's Ofc.	1.00	0.00	0.00	1.00
	TOTAL CFA	39.50	49.00	2.00	90.50
H&SS	English	13.00	12.00	0.00	25.00
	History	15.75	7.50	0.00	23.25
	Philosophy	4.00	6.00	0.00	10.00
	Psychology	13.50	3.50	0.00	17.00
	S & D S.	7.50	6.00	0.00	13.50
	Statistics	4.50	4.00	0.00	8.50
	Dean's Ofc.	0.50	0.00	0.00	0.50
TOTAL H&SS	58.75	39.00	0.00	97.75	
MCS	Biology	13.50	5.00	0.00	18.50
	Chemistry	15.00	6.00	0.00	21.00
	Math	16.50	3.00	0.00	19.50
	Physics	23.80	8.00	0.00	31.80
	Dean's Ofc.	1.50	0.00	0.00	1.50
TOTAL MCS	70.30	22.00	0.00	92.30	
SCS	16.50	18.50	0.00	35.00	
GSIA	27.42	39.50	2.00	68.92	
SUPA	7.58	14.00	1.00	22.58	
OTHER	10.00	1.00	0.00	11.00	
TOTAL	290.00	232.00	5.00	527.00	

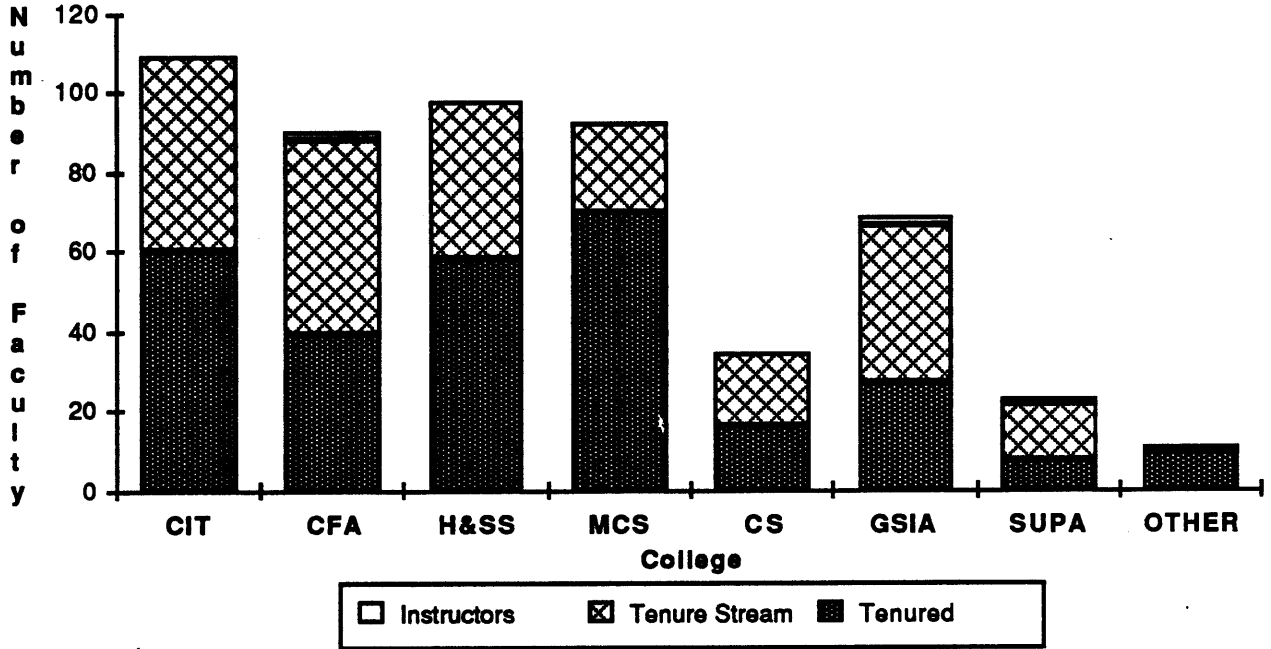
CARNEGIE MELLON UNIVERSITY

**Full-Time Regular Faculty
By College and Tenure Status
Fall Semesters 1984 to 1988**

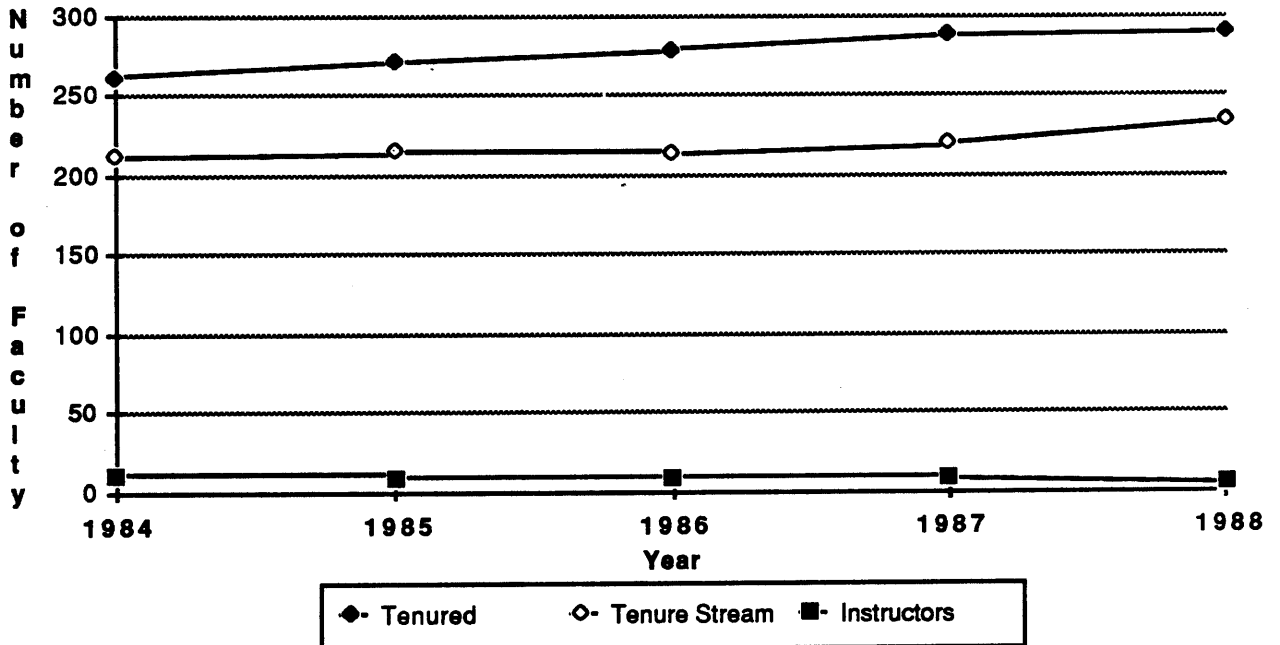
College	Tenure Status	1984	1985	1986	1987	1988
CIT	Tenured	55.00	52.75	58.95	57.95	59.95
	Tenure Stream	47.50	48.50	41.50	42.50	49.00
	Instructors	1.00	0.00	0.00	0.00	0.00
	Total	103.50	101.25	100.45	100.45	108.95
CFA	Tenured	34.50	35.50	35.50	38.50	39.50
	Tenure Stream	41.00	38.00	41.00	45.00	49.00
	Instructors	4.00	4.00	3.00	5.00	2.00
	Total	79.50	77.50	79.50	88.50	90.50
H&SS	Tenured	52.50	56.00	59.50	62.50	58.75
	Tenure Stream	48.25	47.25	44.75	42.75	39.00
	Instructors	2.00	3.00	0.00	0.00	0.00
	Total	102.75	106.25	104.25	105.25	97.75
MCS	Tenured	68.50	69.75	68.55	69.55	70.30
	Tenure Stream	15.00	19.00	19.00	24.00	22.00
	Instructors	0.00	0.00	0.00	0.00	0.00
	Total	83.50	88.75	87.55	93.55	92.30
SCS	Tenured	7.50	9.50	13.70	13.70	16.50
	Tenure Stream	17.50	15.50	17.00	17.50	18.50
	Instructors	0.00	0.00	0.00	0.00	0.00
	Total	25.00	25.00	30.70	31.20	35.00
GSIA	Tenured	23.00	22.25	20.25	25.42	27.42
	Tenure Stream	29.75	33.67	37.67	34.50	39.50
	Instructors	3.00	3.00	6.00	4.00	2.00
	Total	55.75	58.92	63.92	63.92	68.92
SUPA	Tenured	8.00	10.00	8.50	7.33	7.58
	Tenure Stream	11.50	12.33	12.33	12.50	14.00
	Instructors	1.00	0.00	1.00	0.00	1.00
	Total	20.50	22.33	21.83	19.83	22.58
OTHER	Tenured	13.00	15.25	14.05	13.05	10.00
	Tenure Stream	1.50	0.75	0.75	1.25	1.00
	Instructors	0.00	0.00	0.00	0.00	0.00
	Total	14.50	16.00	14.80	14.30	11.00
CMU	Tenured	262.00	271.00	279.00	288.00	290.00
	Tenure Stream	212.00	215.00	214.00	220.00	232.00
	Instructors	11.00	10.00	10.00	9.00	5.00
	Total	485.00	496.00	503.00	517.00	527.00

CARNEGIE MELLON UNIVERSITY

**Full-Time Regular Faculty
By Tenure Status and College
Fall Semester 1988**

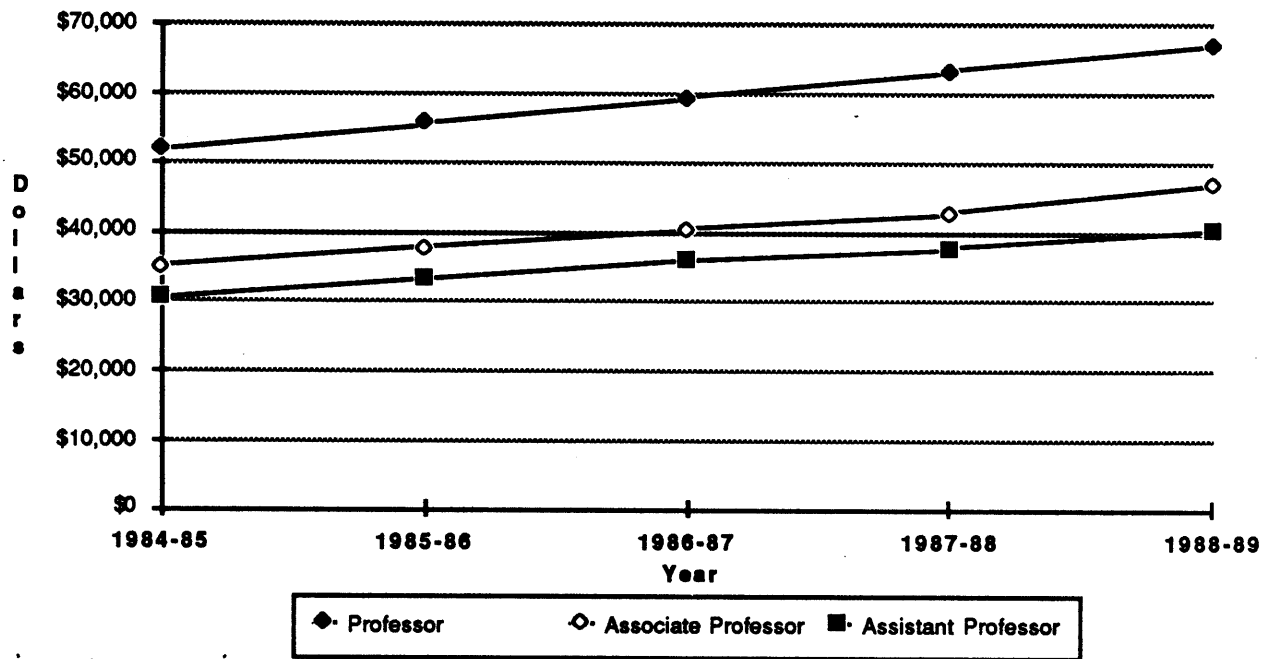


**Full Time Regular Faculty
By Tenure Status
Fall Semesters 1984 to 1988**



CARNEGIE MELLON UNIVERSITY

**Average Faculty Salaries
Full-Time Regular Faculty
Academic Years 1984-85 to 1988-89**



Average Salaries	1984-85	1985-86	1986-87	1987-88	1988-89
Professor	\$52,000	\$55,800	\$59,600	\$63,400	\$67,000
Associate Professor	35,100	37,900	40,500	42,800	46,900
Assistant Professor	30,600	33,400	36,100	37,800	40,500

Source: AAUP Salary Survey

November

CARNEGIE MELLON UNIVERSITY

**Special Teaching Faculty*
By Department, Category and Status
Fall Semester 1988**

College	Department	Special Appts.			Visiting Appts.			TOTAL		
		Full	Part	Total	Full	Part	Total	Full	Part	Total
CIT	Biomedical E.	1	1	2	0	2	2	1	3	4
	Chemical E.	2	1	3	0	0	0	2	1	3
	Civil E.	0	1	1	0	0	0	0	1	1
	E & C E.	①	0	1	1	0	1	2	0	2
	EPP	0	1	1	0	1	1	0	2	2
	Mechanical E.	1	2	3	0	0	0	1	2	3
	MEMS	0	3	3	0	0	0	0	3	3
	Dean's Ofc.	0	0	0	0	0	0	0	0	0
	TOTAL CIT	5	9	14	1	3	4	6	12	18
CFA	Architecture	1	17	18	0	1	1	1	18	19
	Art	0	14	14	1	4	5	1	18	19
	Design	1	3	4	0	0	0	1	3	4
	Drama	3	0	3	4	1	5	7	1	8
	Music	9	36	45	1	0	1	10	36	46
	Dean's Ofc.	1	0	1	0	1	1	1	1	2
	Pre-Col. Mus.	0	26	26	0	0	0	0	26	26
	TOTAL CFA	15	96	111	6	7	13	21	103	124
H&SS	English	4	4	8	1	0	1	5	4	9
	History	3	4	7	0	0	0	3	4	7
	Philosophy	0	5	5	0	0	0	0	5	5
	Psychology	0	3	3	0	0	0	0	3	3
	S & D S.	0	0	0	2	1	3	2	1	3
	Statistics	1	0	1	1	0	1	2	0	2
	Dean's Ofc.	0	0	0	0	0	0	0	0	0
TOTAL H&SS	8	16	24	4	1	5	12	17	29	
MCS	Biology	2	1	3	0	0	0	2	1	3
	Chemistry	1	2	3	1	0	1	2	2	4
	Math	1	0	1	9	0	9	10	0	10
	Physics	1	0	1	1	0	1	2	0	2
	Dean's Ofc.	0	0	0	0	0	0	0	0	0
	TOTAL MCS	5	3	8	11	0	11	16	3	19
SCS	8	1	9	1	0	1	9	1	10	
GSIA	7	10	17	9	1	10	16	11	27	
SUPA	2	11	13	1	0	1	3	11	14	
OTHER	6	0	6	0	0	0	6	0	6	
TOTAL		56	146	202	33	12	45	89	158	247

*Excluding Administrators with Special Faculty Appointments; including Faculty Emeritus, not all of whom teach.

CARNEGIE MELLON UNIVERSITY

**Regular Faculty
Additional Facts and Figures**

**Distribution by Sex, Race and Age
Fall 1988**

Percent of Faculty by Sex

Male	86%
Female	14%

Percent of Faculty by Race

Asian	3%
Black	1%
Hispanic	1%
White	79%
Non-U.S. Citizen	16%

Percent of Faculty by Age

Under 30	3%
30 to 40	40%
40 to 50	29%
50 to 60	17%
Over 60	11%

**Top Ten Institutions Granting Degrees to Faculty
Fall 1988**

Carnegie Mellon University	University of Michigan
Massachusetts Institute of Technology	Yale University
Stanford University	California Institute of Technology
University of California, Berkeley	University of Minnesota
Harvard University	Cornell University

51% of the Regular Faculty received degrees from the above institutions.

85% of the Regular Faculty hold Ph.D's from any institution.

**Percent Change in Faculty Salaries
By Rank
Fall 1983 to Fall 1987**

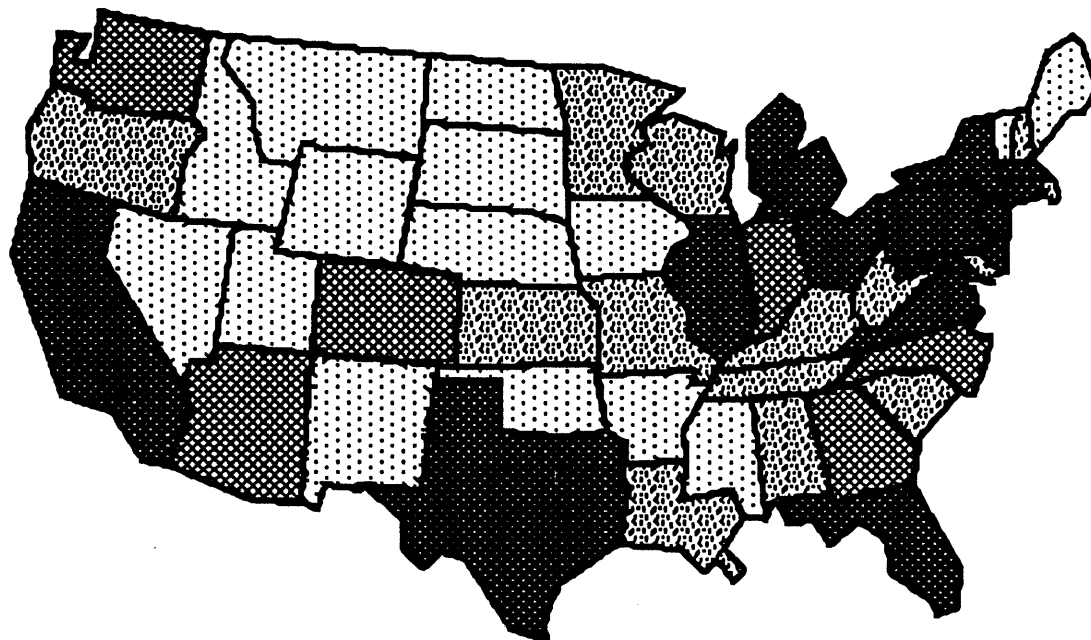
	<u>Prof.</u>	<u>Assoc.</u>	<u>Asst.</u>
	%	%	%
Carnegie Mellon	32 (3)	31 (7)	34 (5)*
U. of CA, Berkeley	42	43	43
U. of Wisconsin	37	40	40
U. of Michigan	31	34	35
U. of Pennsylvania	31	34	34
Northwestern	30	33	35
Purdue	30	27	28
Stanford	30	32	32
Yale	30	28	29
Washington U.	29	24	25
Case Western	28	23	20
MIT	28	31	29
Cornell	27	28	31
Rice	26	22	29
RPI	25	24	28
Harvard	24	16	23
Lehigh	23	22	26

* CMU Rank

ALUMNI

CARNEGIE MELLON UNIVERSITY

**Alumni
By Region and State
Through August 1988**



Region/State	AL	Region/State	AL	Region/State	AL	Region/State	AL
New England		South		Midwest		West	
Connecticut	948	Alabama	125	Illinois	1,040	Alaska	16
Maine	95	Florida	1,679	Indiana	348	Arizona	365
Massachusetts	1,535	Georgia	370	Iowa	64	California	3,806
New Hampshire	184	Kentucky	143	Kansas	115	Colorado	374
Rhode Island	96	Louisiana	130	Michigan	784	Hawaii	70
Vermont	83	Mississippi	29	Minnesota	232	Idaho	54
TOTAL	2,941	North Carolina	598	Missouri	244	Montana	13
Percent of Total	6%	South Carolina	262	Nebraska	30	Nevada	42
Middle States		Tennessee	242	North Dakota	7	Oregon	173
Delaware	259	Virginia	1,281	Ohio	2,240	Utah	52
District of Columbia	322	TOTAL	4,859	South Dakota	13	Washington	354
Maryland	1,643	Percent of Total	10%	West Virginia	280	Wyoming	19
New Jersey	2,009	Southwest		Wisconsin	226	TOTAL	5,338
New York	3,836	Arkansas	39	TOTAL	5,623	Percent of Total	11%
Pennsylvania	14,032	New Mexico	56	Percent of Total	12%	U.S. TOTAL	42,038
TOTAL	22,101	Oklahoma	81			Percent of Total	89%
Percent of Total	47%	Texas	1,000			Unknown	3,845
		TOTAL	1,176			Foreign Countries	1,349
		Percent of Total	2%			TOTAL	47,232

FINANCES

CARNEGIE MELLON UNIVERSITY

**Tuition and Fees
Academic Years 1984-85 to 1988-89**

	1984-85	1985-86	1986-87	1987-88	1988-89
Undergraduate Tuition	\$8,400	\$9,400	\$10,250	\$11,100	\$12,000
Graduate Tuition					
CFA	\$9,100	\$10,000	\$10,500	\$11,200	\$12,000
CIT	9,100	10,000	11,000	11,850	12,750
H&SS	9,100	10,000	10,500	11,200	12,000
MCS	9,100	10,000	10,750	11,500	12,300
CS	9,100	10,000	11,000	11,850	12,750
GSIA	9,850	10,608	11,628	12,648	13,566
SUPA	9,400	10,000	11,000	11,900	12,400
Student Activities Fee	\$60	\$60	\$60	\$60	\$80

**Room and Board
Academic Years 1984-85 to 1988-89**

	1984-85	1985-86	1986-87	1987-88	1988-89
Average Room (Standard Double)	\$1,980	\$2,080	\$2,170	\$2,280	\$2,440
Average Board (19 Meals/Week)	\$1,344	\$1,425	\$1,503	\$1,548	\$1,650

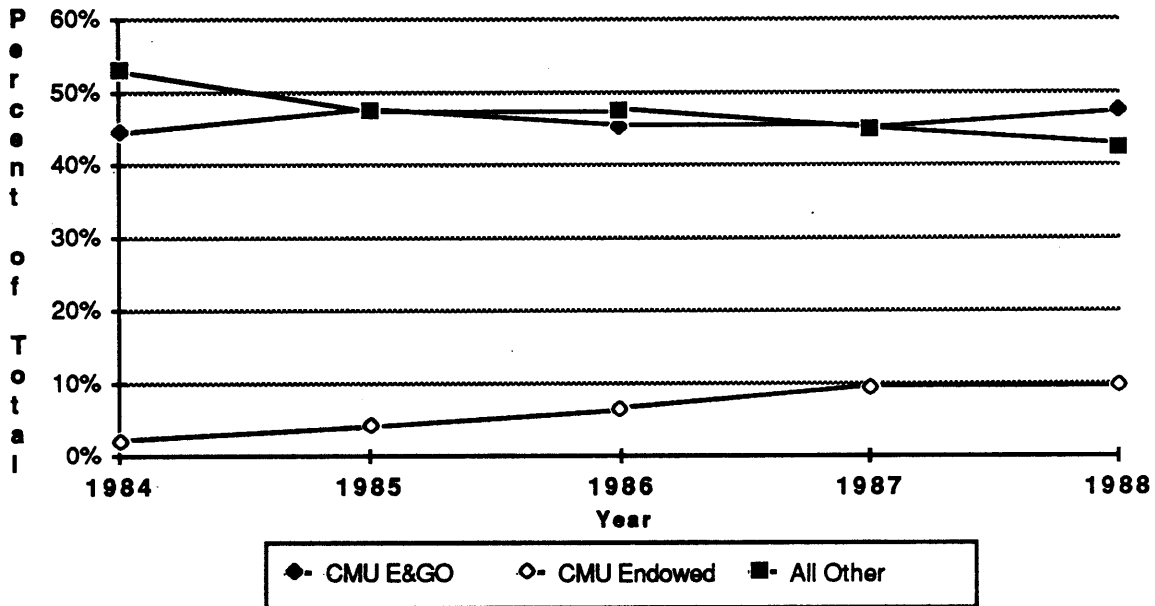
**Total Estimated Cost of Attending CMU
Academic Years 1984-85 to 1988-89**

	1984-85	1985-86	1986-87	1987-88	1988-89
Resident	\$13,200	\$14,300	\$15,300	\$16,300	\$17,650
Commuter	\$10,200	\$11,100	\$12,300	\$13,150	\$14,350

Cost includes: tuition and activities fee, books and supplies, incidentals, room and board for residents and lunches and transportation for commuters.

CARNEGIE MELLON UNIVERSITY

**Undergraduate Scholarships & Grants
By Source, Percent of Total
Fiscal Years 1984 to 1988**



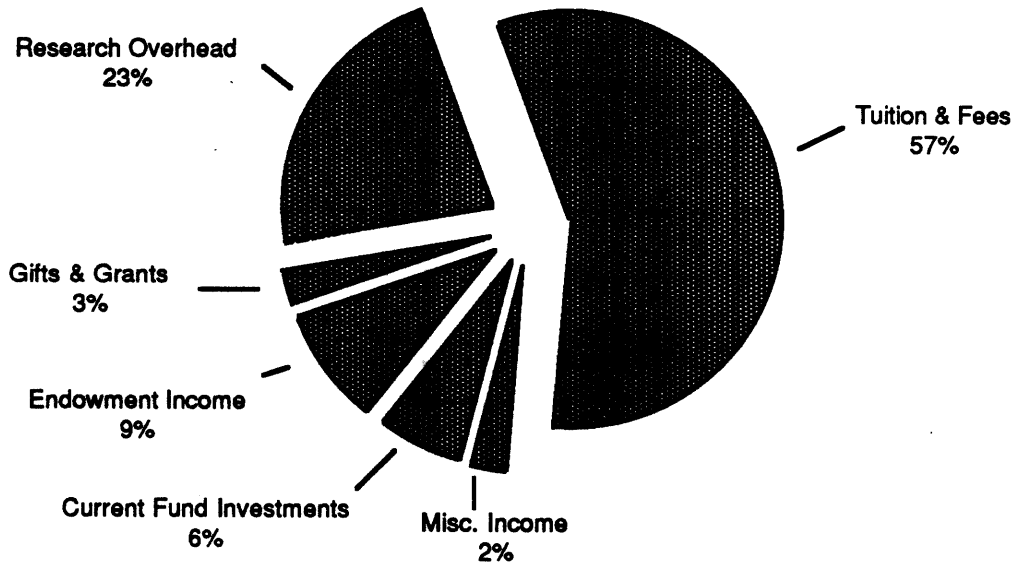
All Other includes Federal, State and Other Grant Resources.

**Undergraduate Financial Aid Resources
By Source
Fiscal Years 1984 to 1988
(Dollars in Thousands)**

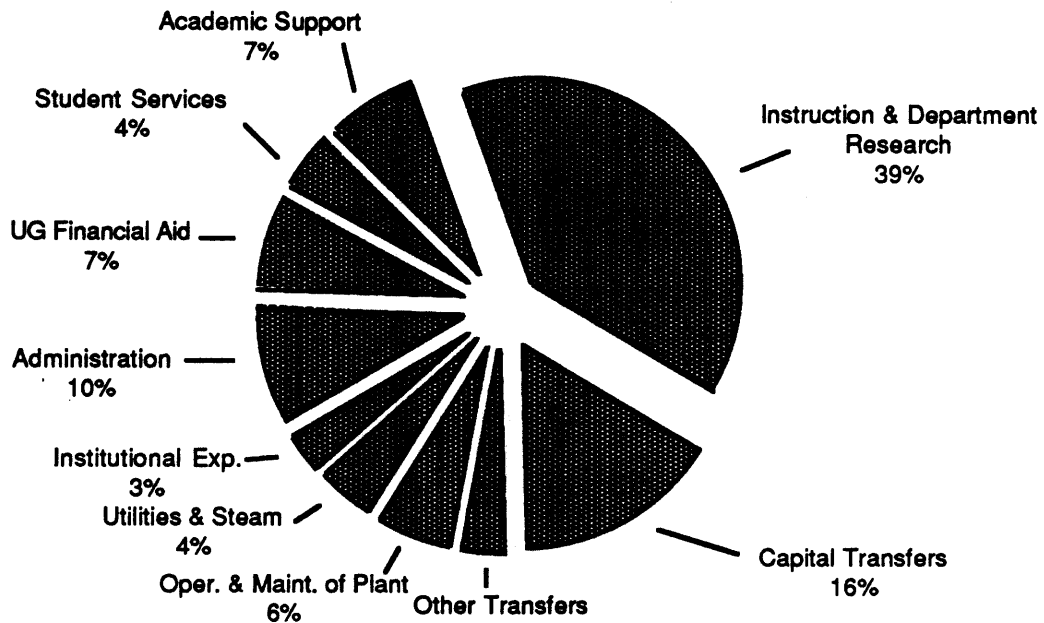
	1984	1985	1986	1987	1988
Scholarships & Grants					
Federal - PELL	\$1,004	\$942	\$1,025	\$726	\$801
Federal - SEOG	1,628	1,641	1,641	1,641	1,641
State - PHEAA	1,078	1,107	1,178	1,223	1,198
Other State Grants	124	157	167	175	159
CMU E&GO	4,404	5,289	6,129	6,777	7,542
CMU Endowed	213	477	889	1,440	1,559
CMU Gifts and Grants	205	140	169	342	280
ROTC	697	694	890	954	975
Other Grant Resources	523	574	1,370	1,706	1,694
TOTAL	\$9,876	\$11,021	\$13,458	\$14,984	\$15,849
Self-Help					
Workstudy	\$1,671	\$1,739	\$2,001	\$1,932	\$1,938
Loans	7,354	8,774	8,693	8,528	8,716
TOTAL	\$9,025	\$10,513	\$10,694	\$10,460	\$10,654
TOTAL	\$18,901	\$21,534	\$24,152	\$25,444	\$26,503
% of Undergraduates with Need	67.4%	62.2%	63.0%	62.0%	62.0%

CARNEGIE MELLON UNIVERSITY

**Distribution of Educational and General Operating (E&GO) Income
Fiscal Year 1988
(Total = \$103,664,000)**

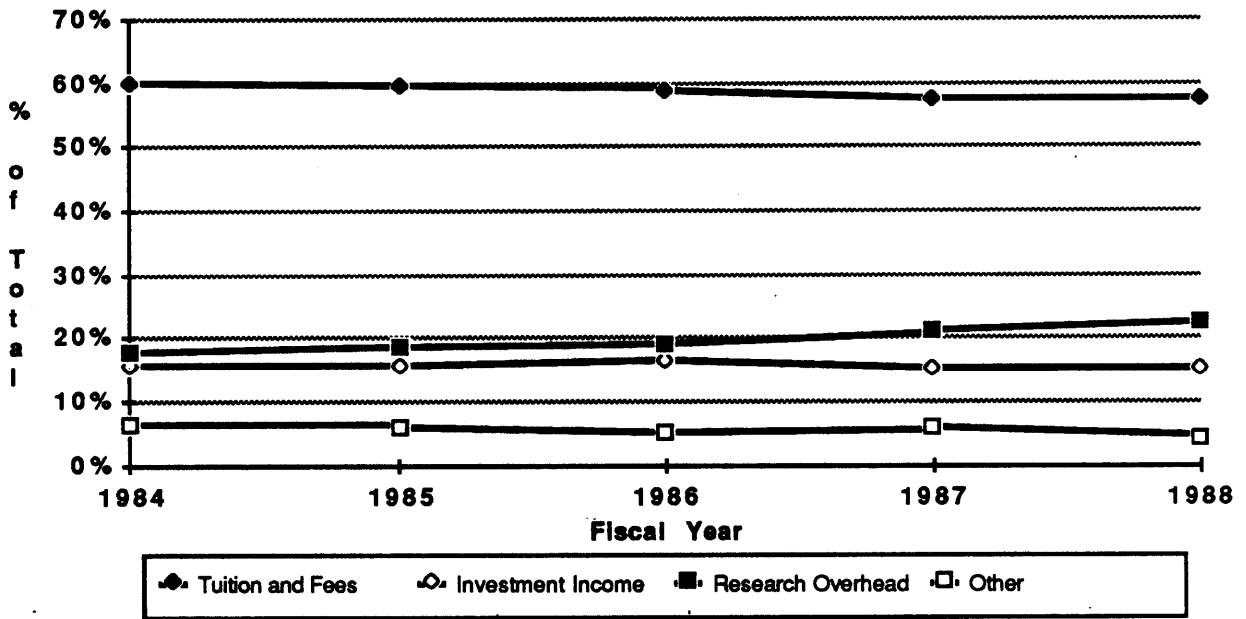


**Distribution of Educational and General Operating (E&GO) Expenditures and Transfers
Fiscal Year 1988
(Total = \$103,606,000)**



CARNEGIE MELLON UNIVERSITY

**Percent of Educational and General Operating (E&GO) Income*
by Source
Fiscal Years 1984 to 1988**



"Investment income" includes endowment income and current fund investments. "Other" includes gifts and grants and miscellaneous income.

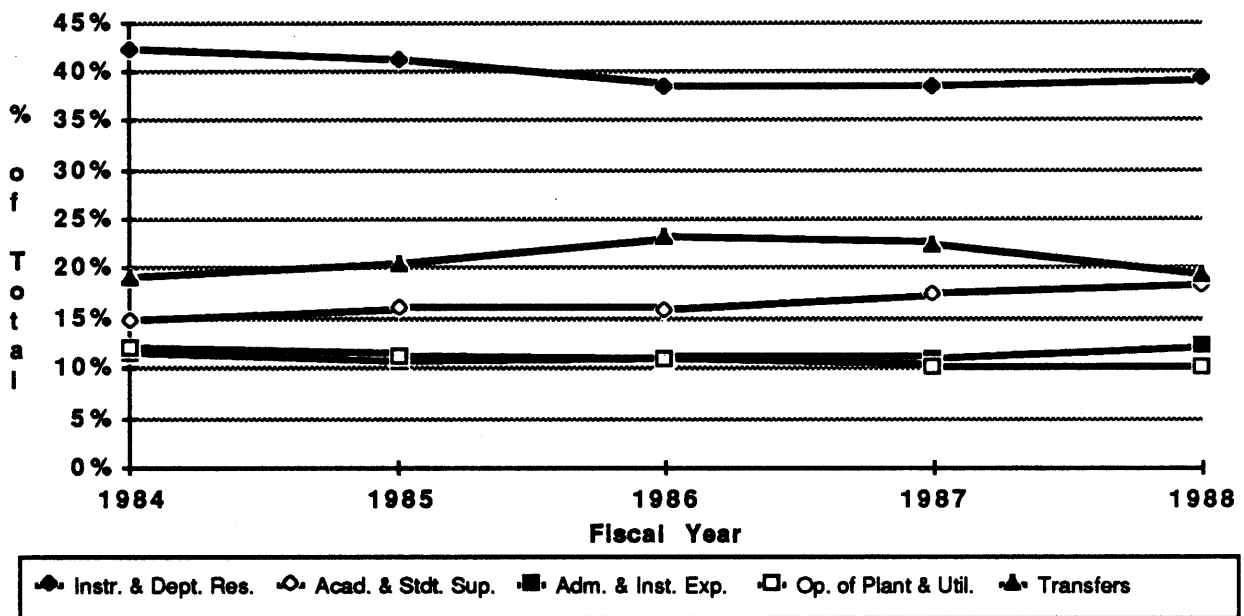
**Educational and General Operating (E&GO) Income*
by Source
Fiscal Years 1984 to 1988
(Dollars in Thousands)**

Income	1984	1985	1986	1987	1988
Tuition and Fees	\$38,997	\$44,452	\$50,925	\$55,591	\$59,781
Endowment Income	6,564	6,558	8,297	8,727	9,167
Current Fund Investments	3,590	5,073	6,185	6,093	6,645
Gifts & Grants	2,486	2,664	2,127	3,494	2,730
Research Overhead	11,623	14,069	16,755	20,558	23,377
Miscellaneous Income	1,569	1,956	2,504	2,388	1,964
TOTAL	\$64,829	\$74,772	\$86,793	\$96,851	\$103,664

*Excluding Management Centers.

CARNEGIE MELLON UNIVERSITY

**Percent of Educational and General Operating (E&GO) Expenditures and Transfers*
by Function
Fiscal Years 1984 to 1988**



Academic & Student Support includes Academic Support, Student Services and Undergraduate Financial Aid.

**Educational and General Operating (E&GO) Expenditures and Transfers*
by Function
Fiscal Years 1984 to 1988
(Dollars in Thousands)**

	1984	1985	1986	1987	1988
Expenditures					
Instruction & Department Research	\$27,429	\$30,796	\$33,510	\$37,402	\$40,848
Academic Support	2,586	3,738	4,558	5,867	7,139
Student Services	2,626	3,024	3,214	4,214	4,395
Undergraduate Financial Aid	4,406	5,289	6,129	6,777	7,538
Administration	6,093	6,569	7,908	8,357	9,946
Institutional Expense	1,410	1,465	1,768	2,367	2,944
Operation & Maintenance of Plant	4,305	4,644	5,244	5,355	5,951
Utilities & Steam	3,488	3,818	4,239	4,575	4,692
TOTAL	\$52,343	\$59,343	\$66,570	\$74,914	\$83,453
Transfers					
Capital	\$10,138	\$11,491	\$14,708	\$15,852	\$16,183
Other	2,264	3,857	5,435	5,994	3,970
TOTAL	\$12,402	\$15,348	\$20,143	\$21,846	\$20,153
TOTAL	\$64,745	\$74,691	\$86,713	\$96,760	\$103,606

*Excluding Management Centers

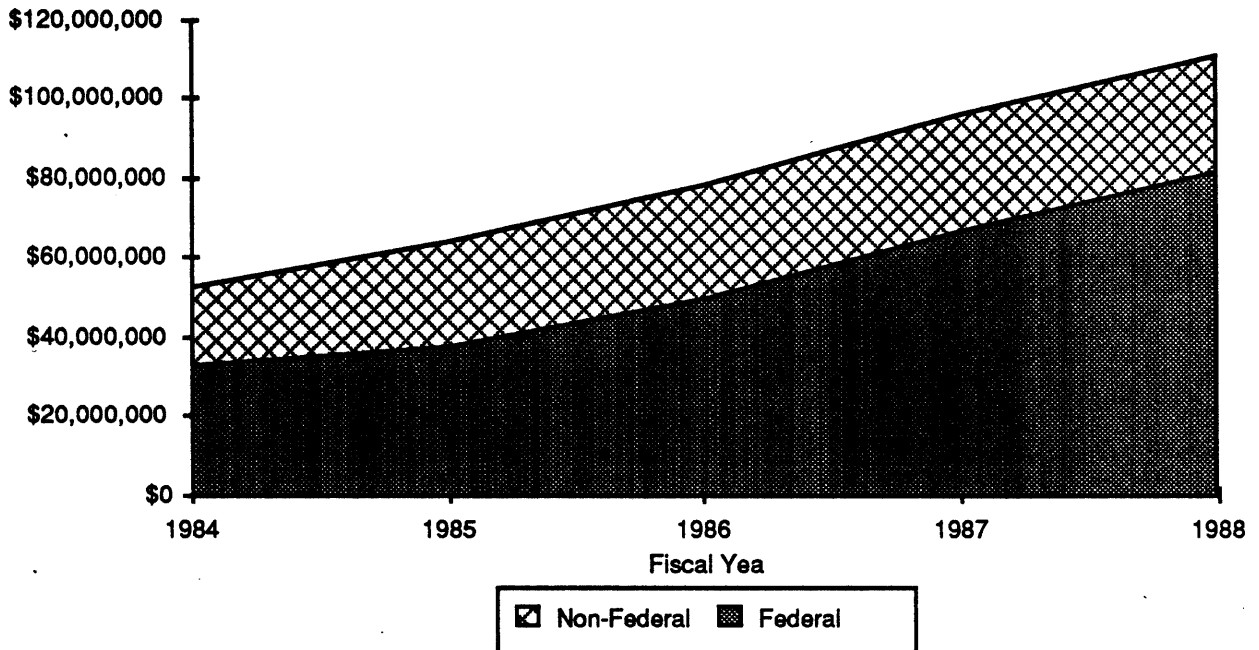
CARNEGIE MELLON UNIVERSITY

**Total Sponsored Research Costs
by College and Research Center
Fiscal Years 1984 to 1988
(Dollars in Thousands)**

	1984	1985	1986	1987	1988
Direct Costs					
CIT	\$9,208	\$10,170	\$12,207	\$14,088	\$16,029
CFA	337	404	233	329	239
H&SS	1,767	2,295	3,302	4,504	4,814
MCS	5,848	6,924	6,948	8,234	9,804
SCS	16,083	20,008	20,251	22,898	24,545
GSIA	700	685	810	554	585
SUPA	346	467	381	434	347
MIR	4,576	4,884	5,495	6,069	5,702
SEI	0	1,892	7,913	12,597	17,809
WPATC	70	229	1,325	1,471	1,826
Other	347	440	1,399	3,086	4,334
TOTAL	\$39,282	\$48,398	\$60,264	\$74,264	\$86,034
Indirect Costs					
CIT	\$3,185	\$3,489	\$3,926	\$4,951	\$5,584
CFA	125	143	81	145	95
H&SS	715	750	1,005	1,308	1,641
MCS	2,100	2,252	2,648	2,762	3,396
SCS	5,379	6,898	7,517	8,468	9,015
GSIA	270	300	381	315	268
SUPA	132	132	169	83	127
MIR	1,717	1,871	2,207	2,239	2,337
SEI	0	110	575	1,158	1,502
WPATC	0	0	0	0	0
Other	12	15	303	613	1,066
TOTAL	\$13,635	\$15,960	\$18,812	\$22,042	\$25,031
Total Sponsored Research Costs					
CIT	\$12,393	\$13,659	\$16,133	\$19,039	\$21,613
CFA	462	547	314	474	334
H&SS	2,482	3,045	4,307	5,812	6,455
MCS	7,948	9,176	9,596	10,996	13,200
SCS	21,462	26,906	27,768	31,366	33,560
GSIA	970	985	1,191	869	853
SUPA	478	599	550	517	474
MIR	6,293	6,755	7,702	8,308	8,039
SEI	0	2,002	8,488	13,755	19,311
WPATC	70	229	1,325	1,471	1,826
Other	359	455	1,702	3,699	5,400
TOTAL	\$52,917	\$64,358	\$79,076	\$96,306	\$111,065

CARNEGIE MELLON UNIVERSITY

**Total Sponsored Research Costs
by Source
Fiscal Years 1984 to 1988**

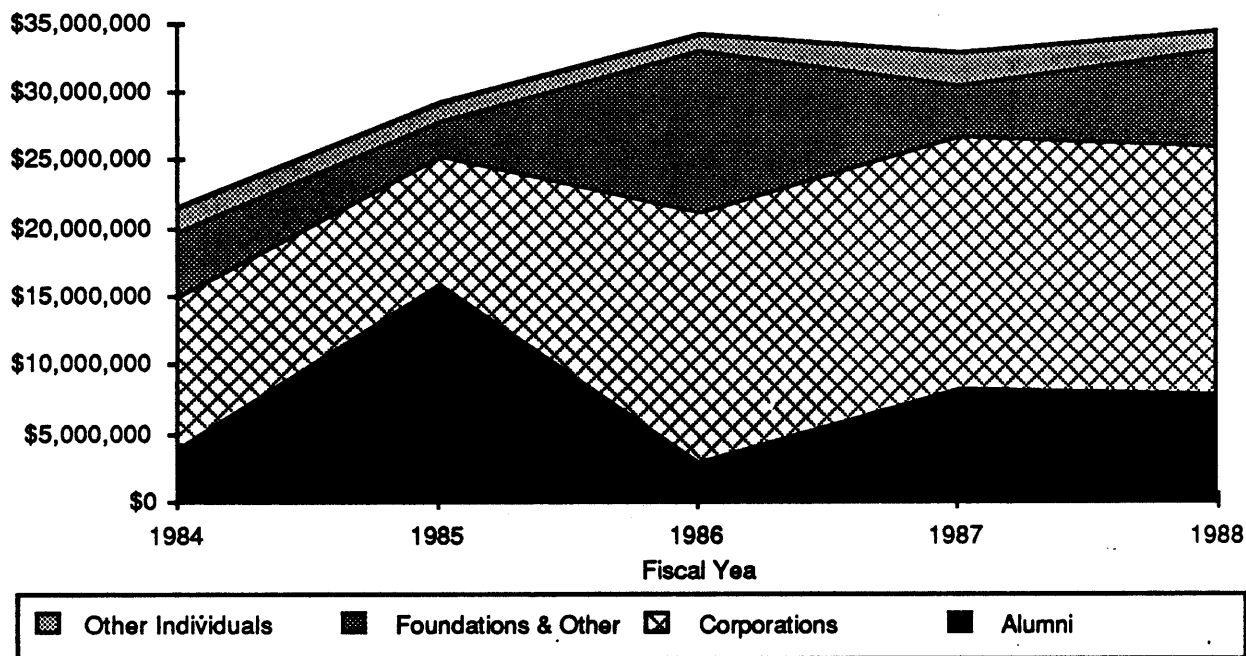


**Total Sponsored Research Costs
by Agency
Fiscal Years 1984 to 1988**

	1984	1985	1986	1987	1988
Federal					
Defense	\$15,653,325	\$19,588,251	\$29,431,236	\$39,876,261	\$47,300,997
National Science Foundation	7,547,600	7,508,956	8,490,842	15,153,898	19,007,709
Health & Human Services	4,642,809	5,312,074	6,159,148	6,648,486	8,767,297
Energy	3,399,379	3,495,484	3,273,420	3,343,418	3,753,054
Other Federal	2,379,397	2,070,003	2,840,093	2,549,617	3,489,823
TOTAL	\$33,622,510	\$37,974,768	\$50,194,739	\$67,571,680	\$82,318,880
Non-Federal					
Industrial	\$12,156,400	\$16,804,123	\$17,403,119	\$16,211,340	\$17,100,589
Other Non-Federal	7,138,150	9,579,162	11,478,126	12,522,544	11,646,452
TOTAL	\$19,294,550	\$26,383,285	\$28,881,245	\$28,733,884	\$28,747,041
TOTAL	\$52,917,060	\$64,358,053	\$79,075,984	\$96,305,564	\$111,065,921

CARNEGIE MELLON UNIVERSITY

**Total Giving
By Source
Fiscal Years 1984 to 1988**



**Voluntary Support
By Source and Purpose
Fiscal Years 1984 to 1988**

	1984	1985	1986	1987	1988
Current Operations					
Alumni	\$1,540,617	\$1,759,992	\$1,846,699	\$1,876,097	\$1,921,594
Other Individuals	476,885	545,626	588,449	842,186	806,762
Foundations & Other	4,312,937	2,301,095	6,116,363	2,802,792	5,850,080
Corporations	4,709,330	4,234,355	5,513,757	5,513,094	4,911,391
TOTAL	\$11,039,769	\$8,841,068	\$14,065,268	\$11,034,169	\$13,489,827
Capital					
Alumni	\$2,438,409	\$14,365,102	\$1,281,624	\$6,466,320	\$6,120,059
Other Individuals	1,408,232	738,854	686,157	1,513,895	513,822
Foundations & Other	420,047	314,764	5,796,155	973,300	1,444,467
Corporations	6,398,442	4,961,030	12,478,391	12,879,100	12,909,517
TOTAL	\$10,665,130	\$20,379,750	\$20,242,327	\$21,832,615	\$20,987,865
Total Giving					
Alumni	\$3,979,026	\$16,125,094	\$3,128,323	\$8,342,417	\$8,041,653
Other Individuals	1,885,117	1,284,480	1,274,606	2,356,081	1,320,584
Foundations & Other	4,732,984	2,615,859	11,912,518	3,776,092	7,294,547
Corporations	11,107,772	9,195,385	17,992,148	18,392,194	17,820,908
TOTAL	\$21,704,899	\$29,220,818	\$34,307,595	\$32,866,784	\$34,477,692

Source: Survey of Voluntary Support of Education, Council for Financial Aid to Education

CARNEGIE MELLON UNIVERSITY

Finances

Additional Facts and Figures

**Undergraduate Tuition Comparison, Top Ten Competitors
Academic Year 1988-89
Based on Application Overlap, Fall 1988 Admissions Market Study
In Order of Tuition**

<u>School</u>	<u>Tuition & Fees</u>	<u>Room & Board*</u>
Carnegie Mellon	\$12,080	\$4,070
Harvard	\$13,665	\$4,545
MIT	13,400	4,640
Princeton	13,380	4,587
Cornell	13,140	4,320
Boston U.	12,975	5,200
Yale	12,960	5,100
U. of Penn	12,750	5,157
RPI	12,600	4,250
Washington U.	12,574	4,425
Penn State	3,292 (\$6,610 out of state)	3,050
MEDIAN	\$12,968	\$4,566

* Double Room, 21 meals/week
Source: College Cost Book

**Carnegie Mellon Tuition Benefits
Fiscal Years 1984 to 1988
(Dollars in Thousands)**

	<u>1984</u>	<u>1985</u>	<u>1986</u>	<u>1987</u>	<u>1988</u>
Total	\$1,330	\$1,651	\$2,129	\$2,084	\$2,506

**Carnegie Mellon National Rank
Research and Development Funds
Academic Science and Engineering**

	<u>1982</u>	<u>1986</u>	<u>1987</u>
Total R&D	63rd	49th	45th
Total R&D Among Privates	22nd	17th	18th
Federal R&D	53rd	48th	41st
Non-Federal R&D	73rd	44th	49th
Industry Sponsored R&D	*	3rd	6th
Total R&D Financed Capital Expenditures	24th	18th	22nd

Source: NSF

**Value of the Endowment
Fiscal Years 1984 to 1988
(Dollars in Thousands)**

	<u>1984</u>	<u>1985</u>	<u>1986</u>	<u>1987</u>	<u>1988</u>
Book Value	\$153,814	\$168,449	\$197,788	\$225,014	\$241,066
Market Value	162,508	193,458	228,768	265,893	265,664

SPACE AND FACILITIES

CARNEGIE MELLON UNIVERSITY

**Academic, Research and Administrative Space*
In Square Footage
By Major Division, College/Division, and Use Category
Fall Semester 1988**

Major Division College/Division	Use Category				TOTAL
	Classroom	Laboratory/ Studio	Office	Other	
President	0	0	4,506	162	4,668
Provost					
CIT	838	107,687	86,225	33,851	228,601
CFA	17,486	107,701	37,450	23,812	186,449
H&SS	2,794	12,179	54,026	14,180	83,179
MCS	1,360	124,387	60,323	22,842	208,912
SCS	1,021	20,830	59,019	40,094	120,964
GSIA	7,653	0	21,768	5,273	34,694
SUPA	2,919	2,055	18,131	1,994	25,099
MI	0	26,880	9,875	12,047	48,802
Other	0	0	7,031	1,596	8,627
TOTAL	34,071	401,719	353,848	155,689	945,327
VP Academic Services					
Assoc. V.P.	762	2,964	6,426	81,515	91,667
Other	0	3,422	18,675	33,139	55,236
TOTAL	762	6,386	25,101	114,654	146,903
VP Business Affairs					
Auxiliary Services	0	0	1,947	43,431	45,378
Phys. Plant	0	0	11,755	25,818	37,573
Other	0	0	12,243	1,558	13,801
TOTAL	0	0	25,945	70,807	96,752
VP Development	0	0	8,741	158	8,899
VP Enrollment					
Athletics	0	0	2,969	51,598	54,567
Other	53,445	215	22,180	27,914	103,754
TOTAL	53,445	215	25,149	79,512	158,321
VP University Planning	0	0	4,885	156	5,041
VP University Relations	0	0	2,944	9,264	12,208
OTHER	632	1,597	1,048	67,562	70,839
Total Net Assignable Space	88,910	409,917	452,167	497,964	1,448,958
Building Support	0	0	0	698,721	698,721
TOTAL	88,910	409,917	452,167	1,196,685	2,147,679

*Excludes Leased Space, Trailers, the Housing System, and Health Services, Counseling Center and Housing Offices.

CARNEGIE MELLON UNIVERSITY

**Academic, Research and Administrative Space*
in Square Footage
By Major Division, College/Division, and Building
Fall Semester 1988**

Major Division College/Division	Building											TOTAL
	HL	MMC	MI	PP	SH	SKIBO	ST	UCC	WEH	WH	5017	
President	0	0	0	0	0	0	0	0	0	3,490	0	4,668
Provost												
CIT	0	0	0	0	17,889	0	0	1,978	29,744	0	0	228,601
CFA	0	52,591	0	0	0	0	3,637	0	195	0	0	186,449
H&SS	0	6,917	0	0	0	0	0	0	0	0	0	83,179
MCS	0	0	115,189	0	1,733	0	0	0	49,419	0	0	208,912
SCS	0	0	0	0	0	0	0	9,535	81,648	0	0	120,964
GSIA	0	0	0	0	0	0	0	0	0	0	0	34,694
SUPA	0	0	0	0	0	0	0	0	0	0	0	25,099
MI	0	0	48,802	0	0	0	0	0	0	0	0	48,802
Other	0	0	1,218	0	0	625	0	0	0	892	0	953,954
TOTAL	0	59,508	165,209	0	19,622	625	3,637	11,513	161,006	892	0	945,327
VP Academic Services												
Assoc. V. P.	63,050	0	12,604	0	0	0	0	0	16,013	0	0	91,667
Other	14,849	0	0	0	0	0	0	26,057	3,409	568	0	55,236
TOTAL	77,899	0	12,604	0	0	0	0	26,057	19,422	568	0	146,903
VP Business Affairs												
Auxiliary Srv's	0	39	1,557	138	0	37,869	0	0	0	431	0	45,378
Phys. Plant	0	0	4,380	25,627	0	0	0	382	0	0	0	37,753
Other	0	0	745	0	0	41	0	402	0	9,723	0	13,621
TOTAL	0	39	6,682	25,765	0	37,910	0	784	0	10,154	0	96,752
VP Development	0	0	0	0	0	0	0	0	0	5,354	3,053	8,899
VP Enrollment												
Athletics	0	0	0	0	0	0	0	0	0	0	0	54,567
Other	0	3,851	215	0	4,939	26,740	0	283	6,413	11,156	0	103,754
TOTAL	0	3,851	215	0	4,939	26,740	0	283	6,413	11,156	0	158,321
VP University Planning	0	0	0	0	0	0	0	3,682	0	1,359	0	5,041
VP University Relations	0	0	313	0	0	0	0	0	0	0	1,770	12,208
OTHER	0	0	12,873	0	0	0	0	0	0	0	0	70,839
Total Net Assignable Space	77,899	63,398	197,896	25,765	24,561	65,275	3,637	42,319	186,841	32,973	4,823	1,448,958
Building Support	23,681	37,593	153,878	17,965	11,599	29,248	278	20,141	107,224	12,702	1,117	698,721
TOTAL	101,580	100,991	351,774	43,730	36,160	94,523	3,915	62,460	294,065	45,675	5,940	2,147,679

*Excludes Leased Space, Trailers, the Housing System, and Health Services, Counseling Center and Housing Offices.

CARNEGIE MELLON UNIVERSITY

**Academic, Research and Administrative Space*
in Square Footage
By Major Division, College/Division, and Building
Fall Semester 1988**

Major Division College/Division	Building													
	B/P	BRH	BLDG B	BLDG C/D	BLDG E	BLDG F	BLDG G	CFA	DH	GSIA	GYM	HBH	HH	
President	109	0	0	0	0	0	0	0	0	0	656	413	0	
Provost														
CIT	43,805	0	972	0	0	0	0	0	52,845	0	0	7,413	73,955	
CFA	5,283	0	0	0	0	0	0	87,383	37,360	0	0	0	0	
H&SS	75,976	0	0	0	0	0	0	0	0	286	0	0	0	
MCS	0	0	0	0	0	0	0	0	42,571	0	0	0	0	
SCS	0	0	2,277	15,386	0	0	0	0	12,118	0	0	0	0	
GSIA	0	2,370	0	0	0	0	0	0	0	32,324	0	0	0	
SUPA	0	0	0	0	0	0	0	0	0	0	0	25,099	0	
M	0	0	0	0	0	0	0	0	0	0	0	0	0	
Other	972	0	3,700	0	0	0	0	0	0	0	0	1,220	0	
TOTAL	126,036	2,370	6,949	15,386	0	0	0	87,383	144,894	32,610	0	33,732	73,955	
VP Academic Services														
Assoc. V. P.	0	0	0	0	0	0	0	0	0	0	0	0	0	
Other	3,947	0	1,926	0	0	0	0	0	0	0	0	4,480	0	
TOTAL	3,947	0	1,926	0	0	0	0	0	0	0	0	4,480	0	
VP Business Affairs														
Auxiliary Srv's	5,224	0	0	0	0	0	0	20	0	100	0	0	0	
Phys. Plant	6,461	0	27	0	0	0	486	0	0	0	0	390	0	
Other	1,409	0	1,301	0	0	0	0	0	0	0	0	0	0	
TOTAL	13,094	0	1,328	0	0	0	486	20	0	100	0	390	0	
VP Development	0	0	492	0	0	0	0	0	0	0	0	0	0	
VP Enrollment														
Athletics	0	0	0	0	0	0	0	0	0	0	54,567	0	0	
Other	22,151	0	3,347	0	904	0	446	0	12,061	0	0	8,879	2,370	
TOTAL	22,151	0	3,347	0	904	0	446	0	12,061	0	54,567	8,879	2,370	
VP University Planning	0	0	0	0	0	0	0	0	0	0	0	0	0	
VP University Relations	0	0	0	0	0	9,264	0	0	0	0	0	861	0	
OTHER	0	0	440	26,310	6,516	0	1,865	0	0	0	0	22,835	0	
Total Net Assignable Space	165,337	2,370	14,482	41,696	7,420	9,264	2,797	87,403	156,955	32,710	55,223	71,590	76,325	
Building Support	66,843	762	3,807	11,926	0	1,054	0	37,251	58,826	27,670	7,602	30,407	37,147	
TOTAL	232,180	3,132	18,289	53,622	7,420	10,318	2,797	124,654	215,781	60,380	62,825	101,997	113,472	

*Excludes Leased Space, Trailers, the Housing System, and Health Services, Counseling Center and Housing Offices.

APPENDIX

DEFINITIONS

I. COLLEGE AND DEPARTMENT LISTING

<u>College</u>	<u>Department/Unit</u>	<u>Abbreviation</u>	<u>Notes</u>
CARNEGIE INSTITUTE OF TECHNOLOGY		CIT	Undergraduate and Graduate college.
	Biomedical Engineering	Biomedical E.	
	Chemical Engineering	Chemical E.	
	Civil Engineering	Civil E.	
	Electrical and Computer Engineering	E & C E.	
	Engineering and Public Policy	EPP	
	Manufacturing Engineering	Mfg. E.	
	Mechanical Engineering	Mechanical E.	
	Metallurgical Engineering and Materials Science	MEMS	
	ADDITIONAL UNITS:		
Nuclear Engineering	Nuclear E.	This is no longer formally a department, but a few students are still finishing or graduating from the program.	
No Major Department	No Major Dept.	Students do not declare majors until their sophomore year.	
Interdisciplinary	Interdiscp.	Interdisciplinary units are jointly taught among departments.	
Dean's Office	Dean's Ofc.	Some faculty with administrative responsibility are located in the the Dean's office.	
COLLEGE OF FINE ARTS		CFA	Undergraduate and graduate college.
	Architecture		
	Art		
	Design		
	Drama		
	Music		
ADDITIONAL UNITS:			
Interdisciplinary	Interdiscp.	Interdisciplinary units are jointly taught among departments.	
Dean's Office	Dean's Ofc.	Some faculty with administrative responsibility are located in the Dean's office.	
Pre-College Music	Pre-Col. Mus.	Year-round program for pre-college music students and CMU students who are not music majors.	
COLLEGE OF HUMANITIES AND SOCIAL SCIENCES		H&SS	Undergraduate and graduate college.
	English		
	History		
	Philosophy		
	Psychology		
	Social and Decision Sciences	S & D S.	
	Statistics		
ADDITIONAL UNITS:			
Economics		The student major Economics is housed in H&SS.	
Industrial Management in H&SS	IM - H&SS	Some freshmen and sophomores take the H&SS core before being accepted into the IM major.	
Student Defined Major	Student Def'd	Some students in H&SS define individualized interdisciplinary majors.	

<u>College</u> <u>Department/Unit</u>	<u>Abbreviation</u>	<u>Notes</u>
H&SS (cont.)		
No Major Department Dean's Office	No Major Dept. Dean's Ofc.	Students do not declare majors until their junior year. Some faculty with administrative responsibility are located in the the Dean's office.
MELLON COLLEGE OF SCIENCE MCS		
		Undergraduate and graduate college.
Biological Sciences	Biology	
Chemistry		
Mathematics	Math	
Physics		
ADDITIONAL UNITS		
No Major Department	No Major Dept.	Students do not declare majors until their sophomore year.
Dean's Office	Dean's Ofc.	Some faculty with administrative responsibility are located in the Dean's office.
Interdisciplinary	Interdiscp.	Interdisciplinary units are jointly taught among departments.
Industrial Management	IM	IM is an unaffiliated undergraduate major.
SCHOOL OF COMPUTER SCIENCE		
	SCS	Graduate College.
GRADUATE SCHOOL OF INDUSTRIAL ADMINISTRATION		
	GSIA	Graduate College.
Economics		Most Economics courses are taught by GSIA faculty.
Industrial Management	IM	Most IM courses are taught by GSIA faculty.
SCHOOL OF URBAN AND PUBLIC AFFAIRS		
	SUPA	Graduate College.
RESEARCH INSTITUTES		
Information Technology Center	ITC	
Mellon Institute	MIR	
Robotics Institute	Robotics	
Software Engineering Institute	SEI	
Western Pennsylvania Advanced Technology Center	WPATC	
Administration	ADMIN	

NOTE:

The category of **NON-DEGREE** students is often listed as a Department in tables showing student enrollment because these students are not affiliated with any Department.

II. TIME PERIODS

Fall Semester	Data are as of the Mid-Semester point in the Fall Semester (except Units, which are end of semester counts).
Academic Year	Data are the addition of Fall and Spring Semester totals.
Fiscal Year	Data are for the period July 1 to June 30 of the indicated year.

III. DEFINITIONS OF TERMS

STUDENTS

FRESHMEN

Applied	Individuals who completed the Admissions process.
Admitted	Applicants who were admitted to CMU.
Net Paid Deposit	Applicants who notified CMU of their intention to attend; all but a few actually enroll.
Yield	Net Paid Deposit as a percent of Admitted freshmen.

Competing Schools: The top 10 schools to which students admitted to CMU also submitted applications. The source of this data is the Competition Surveys.

ENROLLMENT

Students by Level	Undergraduate	Freshman, Sophomore, Junior, Senior
	Graduate	Students enrolled in Master's or Doctoral programs.
	Non-Degree	Special students who are not enrolled in a degree program.
Headcount	Each student, full or part time, is counted once.	
Full-Time Equivalent (FTE)	Each full-time student is counted once; part-time students are counted based on the percentage of full-time tuition paid to cover their current courses.	

HOUSING TYPE

University Housing	On-Campus	CMU owned dormitories physically located on the campus.
	Off-Campus	CMU controlled off-campus housing.
	Fraternity/Sorority	Fraternity or Sorority controlled housing.
Non-University Housing	All other student residence arrangements.	

PERSISTENCE

The percentage of students, enrolled in a particular year, who remain at CMU or who graduate over the succeeding five years.

DEGREES

Bachelors	B.A., B.S., BFA, B.Arch.
Masters	M.A., M.S., M.E., MFA, M.Arch., M.A.M., M.A.T, M.Phil., M.P.M, M.S.I.A.
Doctorates	D.A., Ph.D.

All degrees are show by the Department from which they were earned, rather than the particular program or emphasis listed on the individual's degree. All degree programs are listed in the front of this booklet.

TEACHING

UNITS

A student at CMU earns a specified number of units for each course taken at the University. Three (3) units are the equivalent of one (1) credit hour. The number of units taught by a department is calculated by multiplying the number of students in each of the courses offered by that department by the number of units associated each course.

Other	includes units taught to Non-Degree students and students from other colleges attending CMU through the Pennsylvania Council of Higher Education (PCHE) agreement.
-------	--

FACULTY AND STAFF

FULL-TIME STAFF

Categories of staff are based on the coding scheme required by the EEOC. These include:

Administrative	Top level executive, managerial and other administrative positions.
Other Instructional	Instructional Staff
Research	Research positions, funded both externally and internally. Research Faculty are included in this category.
Professional	Lower level administrative positions.
Secretarial/Clerical	Secretarial and Clerical positions.
Technical/Paraprofessional	Technical and paraprofessional positions.
Other	Skilled crafts and service maintenance positions.
Regular and Special Teaching Faculty	See Below

FACULTY

Total Faculty includes two categories of faculty members. They are:

Regular Faculty	Regular faculty are comprised of four ranks of permanent faculty members (subject to the rules of the tenure process): Professor, Associate Professor, Assistant Professor, and Instructor. Professors and some Associate Professors are tenured; the rest of the Associate Professors and Assistant Professors are eligible for tenure, or in the Tenure Stream; and Instructors are eligible for promotion into the tenure stream.
Special Faculty	Special faculty encompasses several ranks of temporary, instructional faculty, including active Faculty Emeritus, Adjunct faculty, Instructional Staff, Lecturers and Visiting Faculty. Administrators with Special Faculty appointments are excluded.
Method of counting:	Many Regular Faculty have joint appointments in one or more departments, and are split between these appointments accordingly. Special Faculty are counted in the department in which they have their primary appointment.

Research Faculty are excluded this year because changes in the types of research faculty were not reflected in the Personnel system.

ALUMNI

Includes all living persons who attended the university as degree candidates.

FINANCES

TUITION AND FEES

Undergraduate Tuition	Tuition charged to full-time undergraduate students. This is established at the university level.
Graduate Tuition	Tuition charged to full-time graduate students. This is established by each college.
Average Room	The annual charge for a standard double room. Other options for university housing include: Standard and Prime rooms for one, three or four students, and several apartment, townhouse or separate house alternatives.
Average Board	The annual charge for a 19 meal per week plan. Other options include 15, 10 and 5 meals per week.
Total Estimated Cost of Attending CMU.	This includes tuition and activities fee, books and supplies, incidentals, room and board for Residents and lunches and transportation for Commuters. This is computed each year by the Financial Aid Office.

UNDERGRADUATE FINANCIAL AID RESOURCES

Federal Aid	PELL SEOG	Federal entitlement grant program. Supplemental Education Opportunity Grant.
State Aid	PHEAA	Pennsylvania Higher Education Assistance Agency.
Other State Aid	Aid from states other than Pennsylvania.	
CMU E&GO	Aid provided from Carnegie Mellon Educational and General Operating Expenses.	
CMU Endowed	Aid provided from income from the Carnegie Mellon University Endowment Fund.	
CMU Gifts & Grants	Aid provided through gifts and grants to the University for this purpose.	
ROTC	Money from the Air Force, Army and Navy ROTC programs.	
Other Grant Resources	Aid from all other sources, primarily scholarships.	

EDUCATION AND GENERAL OPERATING (E&GO) INCOME, EXPENDITURES AND TRANSFERS

E&GO BUDGET The E&GO budget allocates unrestricted income in the Current Fund to support the basic educational and administrative functions of the university. Operating costs not included in the E&GO are covered primarily by restricted funds received either as direct support for sponsored research, or as gifts or grants for particular (restricted) purposes. Certain activities of the University have been "designated" as management centers, and, therefore, are not included in the E&GO. Management centers include: Auxiliary Services, Mellon Institute of Research, Summer School and Executive Education Programs, GSIA and SUPA.

INCOME

Tuition & Fees	Payments made by undergraduate, graduate and special students in accordance with University tuition and fee schedules.
Endowment Income	Unrestricted income derived from endowment investments
Current Fund Investmnts	Earnings derived from Current Fund balances.
Gifts and Grants	Gifts given to the University which are not restricted to a specific purpose by the donor.
Research Overhead	The amount charged to research sponsors to reimburse the university for the indirect costs of administering and housing research programs.
Misc. Income	Includes: interest on operating funds and reserve holding interest or University internal loans and miscellaneous charges.

EXPENDITURES

Instruction & Dept. Research	Expenditures supporting the academic programs and operations in the colleges.
Academic Support	Includes: the Libraries and Audio Visual Aids, and Computing and Info Services.
Student Services	Includes: Enrollment Planning, Athletics and Student Affairs.
UG Financial Aid	Unrestricted aid supporting undergraduates.
Administration	Expenses supporting administrative units.
Institutional Exp	Includes: insurance, legal and investment agent fees.
Oper. & Maint. of Plant	Operation and maintenance of physical plant.
Utilities and Steam	Expenditures for utilities and steam.
Total Transfers	Includes: transfers to capital, debt service, management centers, college reserves.

RESEARCH COSTS

In the listing by College and Research Center,
Other includes: Academic Computing, Computing Systems, Hunt Institute for Botanical Documentation, Center for the Design of Educational Computing, Office of the Provost, Office of the Vice President for Enrollment and General Institutional.

VOLUNTARY SUPPORT

Voluntary Support Contributions supporting the University, excluding: income from endowment and other invested funds, and support from federal, state and local governments and their agencies.

TUITION BENEFITS

This shows money paid to CMU faculty, staff and their dependents to take courses at CMU or other universities.

SPACE AND FACILITIES

USE CATEGORIES

Classroom	Includes all rooms used for classrooms.
Laboratory/Studio	Includes laboratory and studio facilities, used both as classrooms and for research.
Office	Includes offices, office support areas and office-related conference rooms.
Other	Includes Special Use Facilities (e.g. the gym), General Use Facilities (e.g., lounge or dining facilities), Support Facilities (e.g. computer, shop and storage rooms) and Health Care Facilities.
Building Support	Includes circulation, custodial, mechanical and structural areas.

BUILDING ABBREVIATIONS

B/P	Baker/Porter
BRH	Bramer House
BLDG B	Bureau of Mines, Building B
BLDG G/D	Bureau of Mines, Building C & C
BLDG E	Bureau of Mines, Building E
BLDG F	Bureau of Mines, Building F
BLDG G	Bureau of Mines, Building G
CFA	College of Fine Arts
DH	Doherty Hall
GSIA	Graduate School of Industrial Administration
GYM	Gym
HBH	Hamburg Hall
HH	Hammerschlag Hall
HL	Hunt Library
MMC	Margaret Morrison Carnegie Hall
MI	Mellon Institute
PP	Physical Plant Building
SH	Scaife Hall
SKIBO	Skibo
ST	Studio Theater
UCC	UCC
WEH	Wean Hall
WH	Warner Hall
5017	5017 Forbes Ave.