

Carnegie Mellon Facts 1988

**University Planning
Volume 2
March, 1988**

Foreword

Carnegie Mellon Facts is a compilation of some of the most commonly requested data and statistical information about Carnegie Mellon. It covers a wide variety of topics including admissions, enrollment, teaching, faculty, alumni, and University finances. The source of the data shown in the tables and graphs is internal except where noted otherwise. Definitions of terms are supplied in the Appendix.

Carnegie Mellon Facts is intended to be an internal document, produced annually for use by members of the campus community. This is the second year it has been produced, and the first time it has been widely distributed. University Planning is soliciting suggestions and comments on its contents, format and on ways to improve its usefulness. Please tear out the last page of this booklet and respond to the brief questionnaire with your reactions.

Table of Contents

BACKGROUND

The University	3
University Organizational Chart. Academic Year 1987-88	4
Research Centers and Groups. Fiscal Year 1988.....	6
Degree Programs. Academic Year 1987-88	8
College and Department Accreditations. Fall Semester 1987.....	10
Campus Master Plan Map. 1987.....	11
Current Campus Map. November 1987.	12
Current Campus Map. Building and Parking Listing.	13

STUDENTS

Freshmen Applicant Activity by College. Entering Fall Semesters 1983 to 1987	17
Enrolled Freshmen by Region and State. Entering Fall 1987	18
Headcount Enrollment by Department, Level and Status. Fall Semester 1987.....	19
Undergraduate Headcount Enrollment by Region and State. Fall Semester 1987	20
Undergraduate and Graduate Headcount Enrollment by Country of Citizenship. Fall Semester 1987	21
Headcount Enrollment by Department and Sex. Fall Semester 1987.....	22
Full-Time Equivalent (FTE) Enrollment by Department and Class. Fall Semester 1987.....	23
Full-Time Equivalent (FTE) Enrollment by College and Level. Fall Semesters 1983 to 1987	24
Distribution of Students by Housing Type, Level and Sex. Fall Semester 1987.....	25
Total Degrees Granted by Department and Level. Academic Year 1986-87.....	26
Total Degrees Granted by College and Level. Academic Years 1982-83 to 1986-87	27
Students. Additional Facts and Figures.	28

TEACHING

Units Taught by Department, Semester and Level. Academic Year 1986-87	31
Units Taught by College and Level. Academic Years 1982-83 to 1986-87.....	32

Summary Faculty Course Evaluation (FCE) Scores by Department and Semester. Academic Year 1986-87.....	33
Summary Faculty Course Evaluation (FCE) Scores by Department and Year. Academic Years 1982-83 to 1986-87	34
Teaching. Additional Facts and Figures.	35

FACULTY

Total Teaching Faculty by Department, Category and Status. Fall Semester 1987	39
Full-Time Regular Faculty by Rank and Department. Fall Semester 1987.....	40
Full-Time Regular Faculty by Tenure Status and Department. Fall Semester 1987.....	41
Full-Time Regular Faculty by College and Tenure Status. Fall Semesters 1983 to 1987	42
Full-Time Regular Faculty by Tenure Status and College. Fall Semester 1987. Full-Time Regular Faculty by Tenure Status. Fall Semesters 1983 to 1987.....	43
Average Faculty Salaries for Full-Time Regular Faculty. Fall Semesters 1983 to 1987	44
Special Teaching Faculty by Department, Category and Status. Fall Semester 1987.....	45
Faculty. Additional Facts and Figures.	46

ALUMNI

Alumni By State. Through August 1987	49
--	----

FINANCES

Tuition and Fees. Room and Board. Academic Years 1983-83 to 1987-88	53
Undergraduate Scholarships & Grants by Source, Percent of Total. Undergraduate Financial Aid Resources by Source. Fiscal Years 1983 to 1987.....	54
Distribution of Educational and General Operating (E&GO) Income. Distribution of Educational and General Operating (E&GO) Expenditures and Transfers. Fiscal Year 1987	55
Percent of Educational and General Operating (E&GO) Income by Source. Educational and General Operating (E&GO) Income By Source. Fiscal Years 1983 to 1987	56
Percent of Educational and General Operating (E&GO) Expenditures and Transfers by Function. Educational and General Operating (E&GO) Expenditures and Transfers by Function. Fiscal Years 1983 to 1987	57
Total Sponsored Research Costs by College and Research Center. Fiscal Years 1983 to 1987	58

Total Sponsored Research Costs by Source. Total Sponsored Research Costs by Agency. Fiscal Years 1983 to 1987.....59

Total Giving by Source. Voluntary Support by Source and Purpose. Fiscal Years 1983 to 198760

Finances. Additional Facts and Figures.61

APPENDIX

Definitions.....65

QUESTIONNAIRE71

BACKGROUND

The University

Carnegie Mellon is a privately supported research university dedicated to the pursuit of excellence in the creation and dissemination of knowledge, in artistic endeavor, and in research.

Carnegie Mellon strives for excellence in the dissemination of knowledge through high-quality teaching in a liberal-professional educational curriculum. The liberal educational component provides students with a broad base of knowledge and abilities enabling them to excel and adapt in a changing world. Through emphasis on professional education, students are encouraged to develop the specific information and skills required for success in the world of work. In the tradition of the Carnegie Plan for broadly educating engineers and scientists, Carnegie Mellon strives to develop creative, well-rounded professionals with the skills and knowledge needed to tackle the problems of the future.

The creation of knowledge (scholarly and artistic) is essential to the continued vitality of the University. The small size of the University facilitates flexible, interdisciplinary approaches to scholarship and research. Carnegie Mellon is able to tackle problems that cut across the boundaries of departments and disciplines. Perhaps because of this, Carnegie Mellon consistently demonstrates that it can recognize and seize new opportunities in scholarship and research.

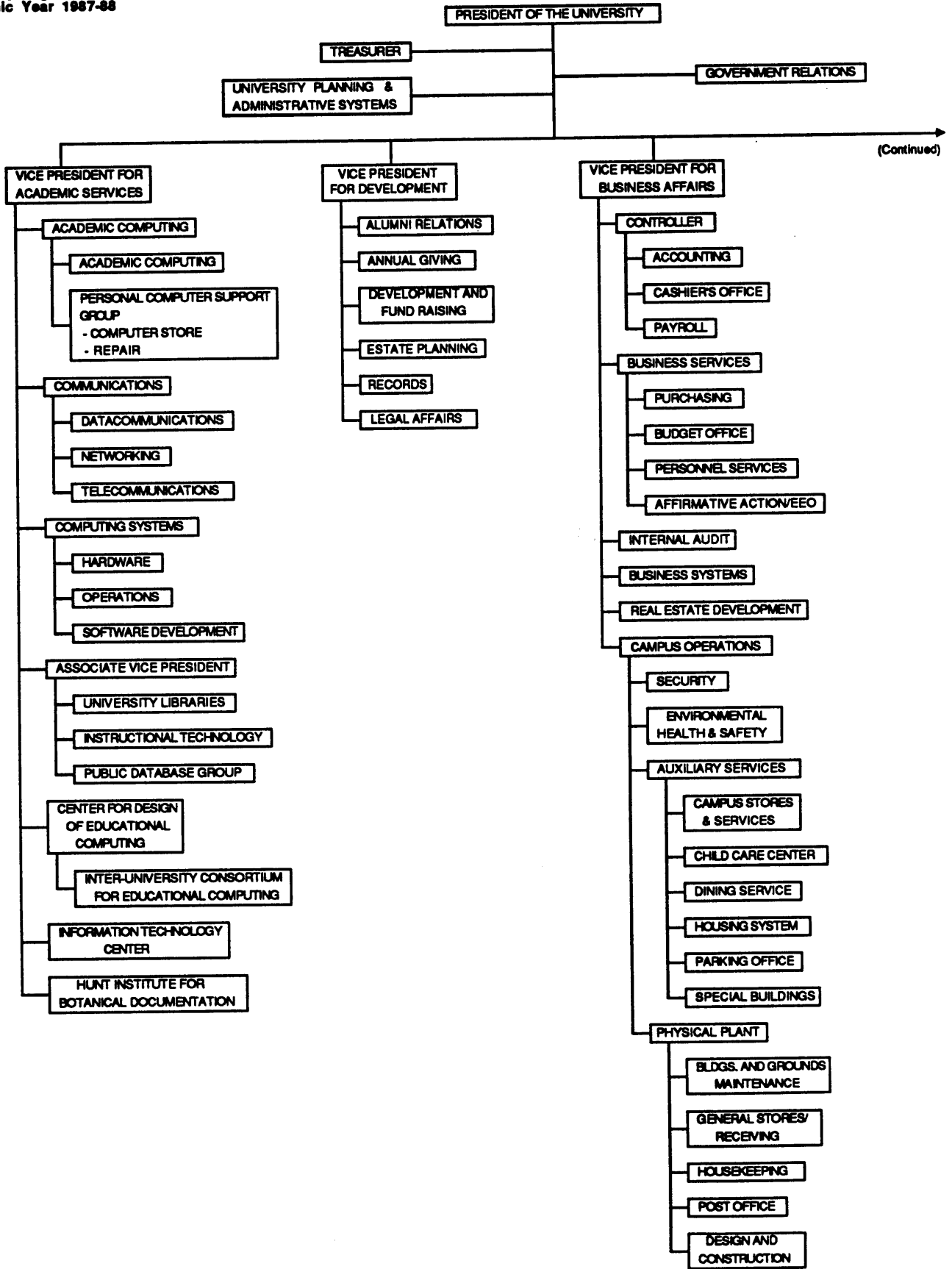
In a strategy which links research efforts with teaching and the dissemination of information, Carnegie Mellon has become an acknowledged leader in the development and application of computing technology in higher education. In 1982, Carnegie Mellon announced its plan to build an on-campus network of personal computers and in January 1986, the University began deployment of its pioneering *Andrew* computer network. At the end of 1987, *Andrew Plus*, an enhancement of the original Andrew system, consisted of a high speed campus-wide communications network, a network file system, mail and bulletin boards, library information, and connections to approximately 5,000 computers with a variety of different operating systems. Efforts over the next 5 years will concentrate the enhancement of this network and on the academic uses of computing, with special emphasis on the development of educational software. Innovation in the use of computing technology is encouraged in all areas of educational endeavor at Carnegie Mellon.

Carnegie Mellon endeavors to expand its role as a leader in the economic revitalization of Pittsburgh and Western Pennsylvania. To this end, Carnegie Mellon has joined forces with the University of Pittsburgh in the development and administration of the Western Pennsylvania Advanced Technology Center, sponsored by the Ben Franklin Partnership Program. The objectives of the center are job creation, job retention and the facilitation of economic growth in the region through research and development, education and training, and assistance to private enterprise. In January 1985, CMU was awarded an \$103 million Defense Department contract to operate the Software Engineering Institute. In 1986, a consortium of Carnegie Mellon, University of Pittsburgh and Westinghouse Electric Corporation obtained support to establish the fifth national supercomputing facility in the country. Finally, Carnegie Mellon, the University of Pittsburgh and the city of Pittsburgh will join forces in the redevelopment of the former Jones and Laughlin Steel site into a high technology research area. The specific contribution of Carnegie Mellon is the establishment of an Applied Research Institute, supported by a \$17 million grant from the Commonwealth, to be matched by support from private companies who wish to undertake research in conjunction with the University.

Over the years, Carnegie Mellon has successfully made the shift from a regional technical college to a national university known for its excellence and innovation in education and research. In the last decade, Carnegie Mellon has experienced an unparalleled period of growth and development. Undergraduate enrollment has risen 10 percent, graduate enrollment has grown by 70%, and sponsored research has quadrupled. In keeping with this growth and with the improvements in the quality of faculty and students, Carnegie Mellon has made a commitment to improve the nature and quality of the physical environment. This will take place through the construction of a number of new buildings, the renovation of existing facilities and the redesign of the campus grounds and circulation. The outline for these improvements is contained in the campus master plan. These successes, and the plans for future growth and improvements can be attributed to the on-going strategic planning effort, a continuous process which guides the University in recognizing and seizing new opportunities.

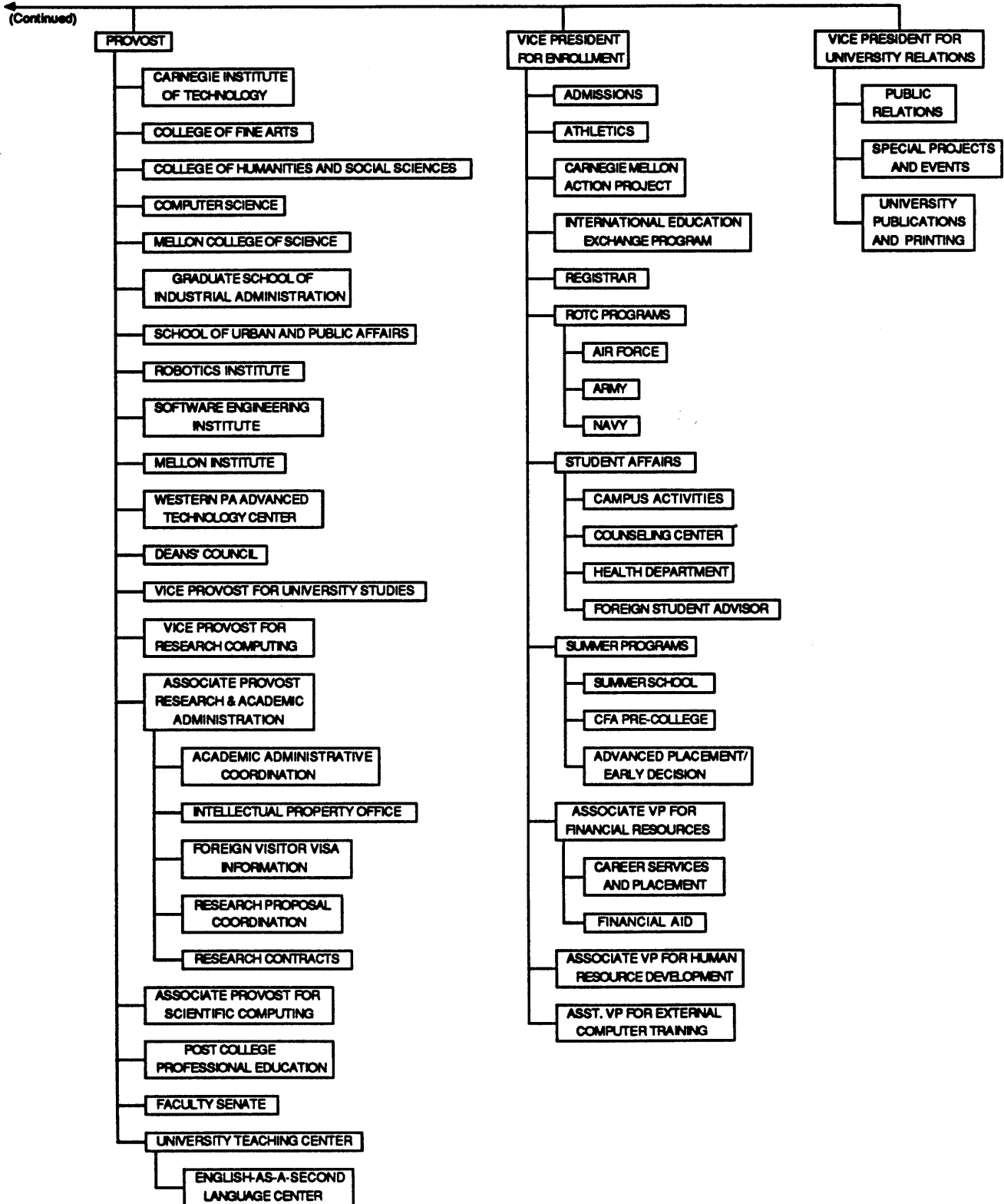
Built upon the strong educational ideals of its founders, Carnegie Mellon has grown into an institution of academic prominence. Rapid development to a leadership position in just three quarters of a century is a tribute to the thousands of men and women who have shaped and influenced the University. In the decades to come, Carnegie Mellon will continue to build upon these ideals in striving for excellence in its dual commitment to education and research.

CARNEGIE MELLON UNIVERSITY
University Organizational Chart
Academic Year 1987-88



(Continued)

CARNEGIE MELLON UNIVERSITY
University Organizational Chart
Academic Year 1987-88



CARNEGIE MELLON UNIVERSITY

**Research Centers and Groups
Fiscal Year 1988**

Center for Art and Technology (CA&T)
Center for Building Performance and Diagnostics (CBD)
Center for Decision Technology and Strategy Research (CDTSR)
Center for the Design of Educational Computing (CDEC)
Center for Dependable Systems (CDS)
Center for Economic Development (SUPA CED)
Center for Educational Computing in English (CECE)
Center for Energy and Environmental Studies (CEES)
Center for Entrepreneurial Development (CED)
Center for Excellence in Optical Data Processing (CEODP)
Center for Fluorescence Research in Biomedical Sciences (CFRBS)
Center for Iron and Steelmaking Research (CISR)
Center for Labor Studies (CLS)
Center for Machine Translation (CMT)
Center for the Management of Information and Technology in Organizations (CMI&TO)
Center for Public Financial Management (CPFM)
Center for Risk Perception and Communication (CRPC)
Center for the Study of Materials (CSM)
Center for the Study of Public Policy (CSPP)
Center for the Study of Writing (CSW)
Coalition to Improve Management in State and Local Government (CIMSLG)
Communications Design Center (CDC)
Decision Systems Research Institute (DSRI)
Engineering Design Research Center (EDRC)
High Temperature Metal Matrix Composites Center (H-TMMCC)
Hunt Institute for Botanical Documentation (HIBD)
The IBM Center for Thin Film Materials (CTFM)

CARNEGIE MELLON UNIVERSITY

**Research Centers and Groups
Fiscal Year 1988**

Information Technology Center (ITC)

Laboratory for Computational Linguistics (LCL)

Light Metals Research Group (LMRG)

Magnetic Materials Research Group (MMRG)

Magnetics Technology Center (MTC)

Mellon Institute (MI)

ASTM Test Monitoring Center (ASTMC)

Battery Technology Center (BTC)

Biotechnology Center (BC)

Center for Metals Production (CMP)

Coatings and Surfaces Center (C&SC)

Computer Engineering Center (CEC)

High Speed Ground Transportation Center (HSGTC)

High Technology Center (HTC)

Materials Characterization Center (MCC)

Rail Systems Center (RSC)

Research Center on the Materials of the Artist and Conservator (CMA&C)

NMR Facility for Biomedical Studies (NMRFBS)

Pittsburgh NMR Center for Biomedical Research (NMRC) (w/ U. of Pittsburgh)

Pittsburgh Supercomputing Center (PSC) (w/ U. of Pittsburgh and Westinghouse)

Program on International Peace and Security (IPS)

Robotics Institute (RI)

Software Engineering Institute (SEI)

SRC/CMU Research Center for Computer-Aided Design (SCR/CMU-RC-CAD)

University Teaching Center (UTC)

Urban Systems Institute (USI)

Western Pennsylvania Advanced Technology Center (WPATC)

CARNEGIE MELLON UNIVERSITY

**Degree Programs
Academic Year 1987-88**

CARNEGIE INSTITUTE OF TECHNOLOGY

Biomedical Engineering

Engineering Major & Biomedical E. B.S.
Biomedical E. with CIT Department M.S.
Biomedical E. M.S.
Biomedical E. with CIT Department Ph.D.
Biomedical E. Ph.D.

Chemical Engineering

Chemical E. B.S.
Chemical E. M.S.
Colloids, Polymers, & Surfaces M.S.
(w/ Chemistry)
Chemical E. Ph.D.

Civil Engineering

Civil E. B.S.
Civil E. M.S.
Civil E. M.E.
Civil E. Ph.D.

Engineering and Public Policy

Engineering Major & EPP B.S.
Engineering Major & EPP M.S.
Engineering Major & EPP Ph.D.
EPP Ph.D.

Electrical and Computer Engineering

Computer E. B.S.
Electrical E. B.S.
Electrical E. M.S.
Electrical E. (Biomedical E.) M.S.
Electrical E. (Computer E.) M.S.
Electrical E. Ph.D.

Mechanical Engineering

Mechanical E. B.S.
Mechanical E. M.S.
Mechanical E. (Biomedical E.) M.S.
Mechanical E. M.E.
Mechanical E. Ph.D.

Metallurgical Engineering and Materials Science

MEMS B.S.
MEMS M.S.
MEMS M.E.
MEMS Ph.D.

Manufacturing Engineering

Manufacturing Engineering M.M.E.

COLLEGE OF FINE ARTS

Master of Arts Management (w/ SUPA) M.A.M.

Architecture

Architecture B.Arch.
Architecture (1st Professional degree) M.Arch
Architecture Ph.D.

Art

Art B.F.A.
Art M.F.A.
Art M.A.T.

Design

Design B.F.A.
Computer Aided Design M.S.

Drama

Drama B.F.A.
Drama M.F.A.

Music

Music B.F.A.
Music M.F.A.

GRADUATE SCHOOL OF INDUSTRIAL ADMINISTRATION

Industrial Administration M.S.I.A.
Industrial Administration, minor in Public M.S.I.A.
Management & Policy (w/ SUPA)
Industrial Administration Ph.D.
Accounting Ph.D.
Economics Ph.D.
Financial Economics Ph.D.
Information Systems Ph.D.
Management of Manufacturing & Automation (w/ Robotics Institute) Ph.D.
Manufacturing and Operations Systems Ph.D.
Marketing Ph.D.
Operations Research Ph.D.
Organizational Psychology & Theory Ph.D.
Politics and Political Economy Ph.D.

SCHOOL OF URBAN AND PUBLIC AFFAIRS

Public Management & Policy M.S.
Public Management & Architecture M.S.
Public Management & Policy, minor in Business Administration (w/ GSIA) M.S.
Public Management & Policy & Juris Doctor (w/ U. of Pittsburgh) M.S.
Public Management & Master of Divinity (w/ Pittsburgh Theological Seminary) M.S.
Master of Public Management M.P.M.
Master of Arts Management (w/ CFA) M.A.M.
Public Policy Analysis Ph.D.
Social Science & Public Policy Analysis Ph.D.
(w/ S & D.S.)
Architecture & Public Policy Analysis Ph.D.
(w/ Architecture)

CARNEGIE MELLON UNIVERSITY

**Degree Programs
Academic Year 1987-88**

COLLEGE OF HUMANITIES AND SOCIAL SCIENCES

Economics

Economics B.A.
Economics B.S.
Managerial Economics B.S.
Economics Ph.D.

English

Literary & Cultural Studies B.A.
Creative Writing B.A.
Professional Writing B.A.
Technical Writing B.S.
English M.A.
Professional & Technical Writing M.A.
Rhetoric Ph.D.
Literary & Cultural Theory Ph.D.

History

History B.A.
History B.S.
Applied History B.A.
Applied History B.S.
European Studies (Double Major) B.A.
History M.A.
Applied History M.S.
Social History Ph.D.
Applied History Ph.D.

Student Defined

B.A.

Student Defined

B.S.

Modern Languages

Modern Languages (Double Major) B.A.

Philosophy

Philosophy B.A.
Logic & Computation B.S.
Computational Linguistics (w/ U. of Pittsburgh) Ph.D.

Psychology

Psychology B.A.
Psychology B.S.
Cognitive Science B.S.
Psychology Ph.D.

Social and Decision Sciences

Social & Decision Sciences B.S.
Information & Decision Systems B.S.
Policy & Management B.S.
Social & Decision Sciences Ph.D.
Social Science & Public Policy (w/ SUPA) Ph.D.
Decision Making (w/ Statistics) Ph.D.

Statistics

Statistics B.S.
Statistics M.S.
Operations Research (w/ Mathematics) M.S.
Statistics Ph.D.
Decision Making (w/ S. & D. S.) Ph.D.

MELLON COLLEGE OF SCIENCE

Biological Sciences

Biological Sciences B.S.
Biological Sciences & Humanities or Social Science B.A.
Biological Sciences Ph.D.
Biological Sciences/Biochemistry Ph.D.
Biological Sciences/Biophysics Ph.D.
Biological Sciences/Biochemistry & Biophysics Ph.D.

Chemistry

Chemistry B.S.
Chemistry/Computer Science B.S.
Chemistry B.A.
Chemistry M.S.
Chemical Instrumentation M.S.
Polymer Science M.S.
Colloids, Polymers, & Surfaces (w/ Chemical E.) M.S.
Chemistry Ph.D.
Chemistry/Biochemistry Ph.D.
Chemistry/Biophysics Ph.D.
Chemistry/Biochemistry & Biophysics Ph.D.

INDUSTRIAL MANAGEMENT

Industrial Management B.S.

Mathematics

Mathematics B.S.
Applied Mathematics (Computer Science) B.S.
Applied Mathematics (Operations Research) B.S.
Applied Mathematics (Statistics) B.S.
Mathematics M.S.
Applied Mathematics M.S.
Operations Research M.S.
Mathematics D.A.
Mathematics Ph.D.

Physics

Physics B.S.
Physics B.A.
Physics/Computational Physics B.S.
Physics/Computer Science Track B.S.
Physics & Scientific Instrumentation B.S.
Physics M.S.
Measurement & Control M.S.
Physics Ph.D.
Applied Physics Ph.D.
Physics/Biochemistry Ph.D.
Physics/Biophysics Ph.D.
Physics/Biochemistry & Biophysics Ph.D.

COMPUTER SCIENCE

Computer Science Ph.D.

CARNEGIE MELLON UNIVERSITY

**College and Department Accreditations
Fall Semester 1987**

College/Department

Accreditation Agency

CARNEGIE MELLON UNIVERSITY

**Middle States Association of Colleges and Schools
MSA**

CARNEGIE INSTITUTE OF TECHNOLOGY

**Accreditation Board for Engineering Technology
ABET**

Chemical Engineering
Civil Engineering
Electrical and Computer Engineering
Engineering and Public Policy
Mechanical Engineering
Metallurgical Engineering and Materials Science

COLLEGE OF FINE ARTS

Architecture

**National Architectural Accrediting Board
NAAB**

Art
Design

**National Association of Schools of Art and Design
NASA**

Music

**National Association of Schools of Music
NASM**

COLLEGE OF HUMANITIES AND SOCIAL SCIENCES

Psychology

**American Psychological Association
APA**

MELLON COLLEGE OF SCIENCE

Chemistry

**American Chemical Society
ACS**

**GRADUATE SCHOOL OF INDUSTRIAL
ADMINISTRATION**

**American Assembly of Collegiate Schools of Business
AACSB**

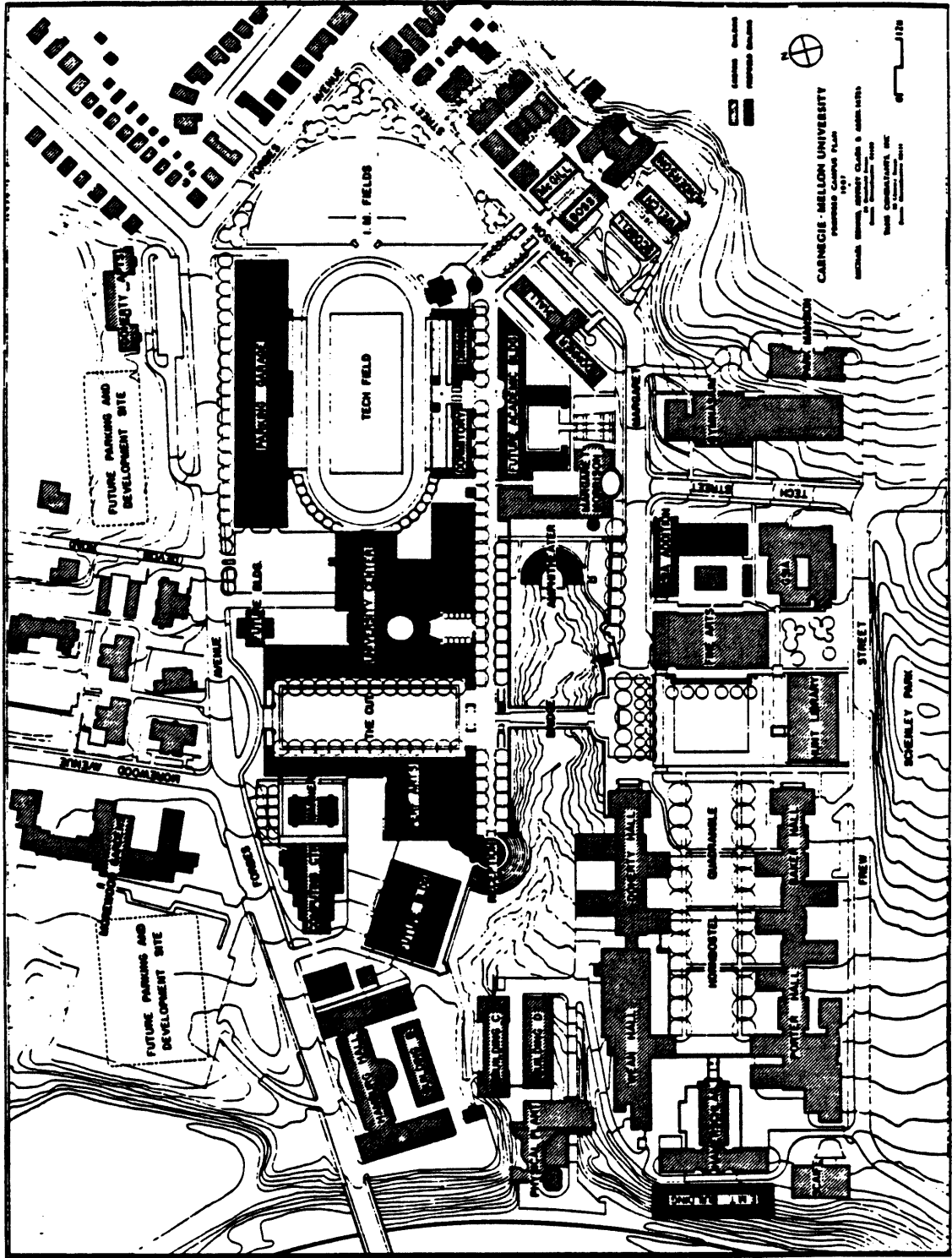
SCHOOL OF URBAN AND PUBLIC AFFAIRS

**National Association for Schools of Public Affairs and
Administration
NASPAA**

CARNEGIE MELLON UNIVERSITY

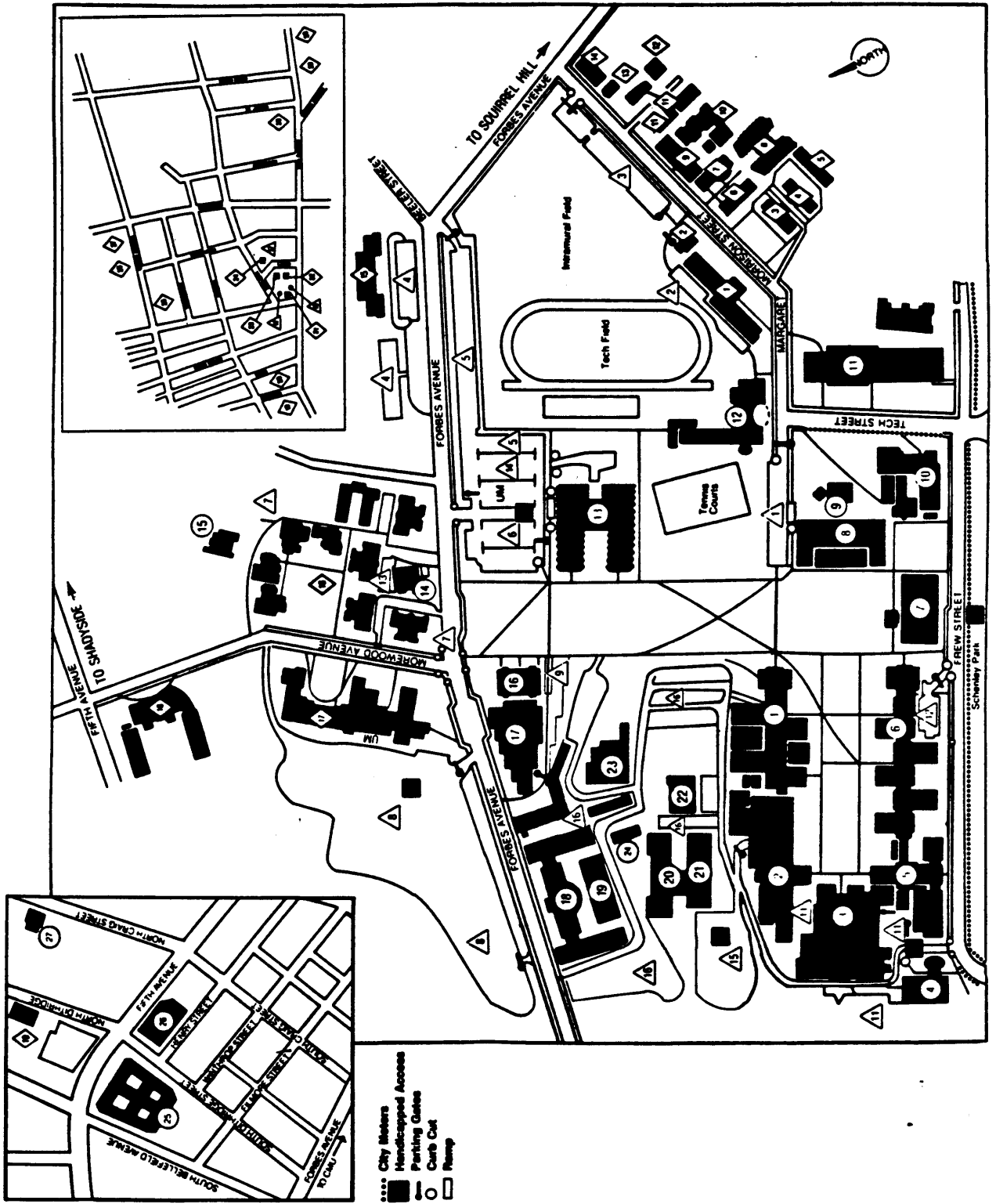
Campus Master Plan Map

1987



CARNEGIE MELLON UNIVERSITY

**Current Campus Map
November 1987**



- City Meters
- Handicapped Access
- Parking Gates
- Carb Cut
- Nursery

CARNEGIE MELLON UNIVERSITY

**Current Campus Map
Building and Parking Listing**



**ACADEMIC/ADMINISTRATION
BUILDINGS**

- 1 Doherty Hall
- 2 Wean Hall
- 3 Harnershlag Hall
- 4 Scaife Hall
- 5 Porter Hall
- 6 Baker Hall
- 7 Hurt Library
- 8 College of Fine Arts
- 9 Studio Theatre
- 10 Graduate School of
Industrial Administration
- 11 Gymnasium
- 12 Margaret Morrison Carnegie Hall
- 13 Skibo
- 14 5017 Forbes Avenue
- 15 Bramer House
- 16 Warner Hall
- 17 University Computing Center
- 18 Hamburg Hall
- 19 U.S. Bureau of Mines Building B
- 20 U.S. Bureau of Mines Building C
- 21 U.S. Bureau of Mines Building D
- 22 U.S. Bureau of Mines Building E
- 23 U.S. Bureau of Mines Building F
- 24 U.S. Bureau of Mines Building G
- 25 Mellon Institute
- 26 Software Engineering Institute
- 27 College Club



RESIDENCE BUILDINGS

- 1 Donner Hall
- 2 5125 Margaret Morrison
- 3 Scobell Hall
- 4 Welch Hall
- 5 Henderson Hall
- 6 Boss Hall
- 7 McGill Hall
- 8 Harnershlag House
- 9 Margaret Morrison Sorority Houses
- 10 Margaret Morrison Plaza (street level)
- 11 Margaret Morrison Apartments
- 12 Tech House
- 13 Spirit House
- 14 Woodlawn Apartments
- 15 Doherty Apartments
- 16 Fraternity Quadrangle
- 17 Morewood Gardens
- 18 Mudge House
- 19 Shirley Apartments
- 20 London Terrace Apartments
- 21 Fifth Neville Apartments
- 22 630 Clyde Street
- 23 Marybelle Apartments
- 24 Shary Oak Apts. (601 Clyde St.)
- 25 Hampshire Hall
- 26 Tudor Hall Apartments
- 27 Carol Apartments
- 28 5237 Fifth Avenue
- 29 Mark-Walt Apartments
- 30 Claridge Apartments



PARKING AREAS

- 1 Fine Arts
- 2 Donner
- 3 Margaret Morrison
- 4 Doherty
- 5 Skibo A
- 6 Skibo B
- 7 Fraternities
- 8 Morewood
- 9 Warner
- 11 Porter-Harnershlag
- 12 Baker
- 13 5017 Forbes Avenue
- 14 Reserved Visitor Parking
(with permit only)
- 15 U.S. Bureau of Mines (lower)
- 16 U.S. Bureau of Mines (Upper)
- 17 Clyde Street
- 18 Clyde Street Garage

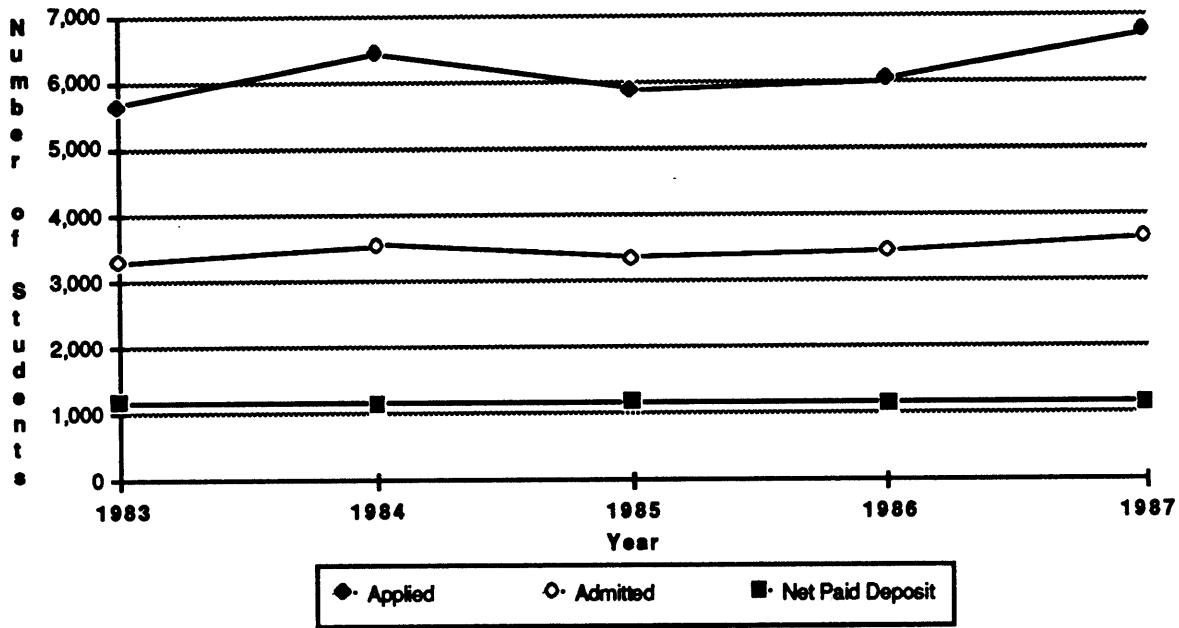
UM Metered Lots open to visitors and
campus members with payment of
meter fee.

STUDENTS



CARNEGIE MELLON UNIVERSITY

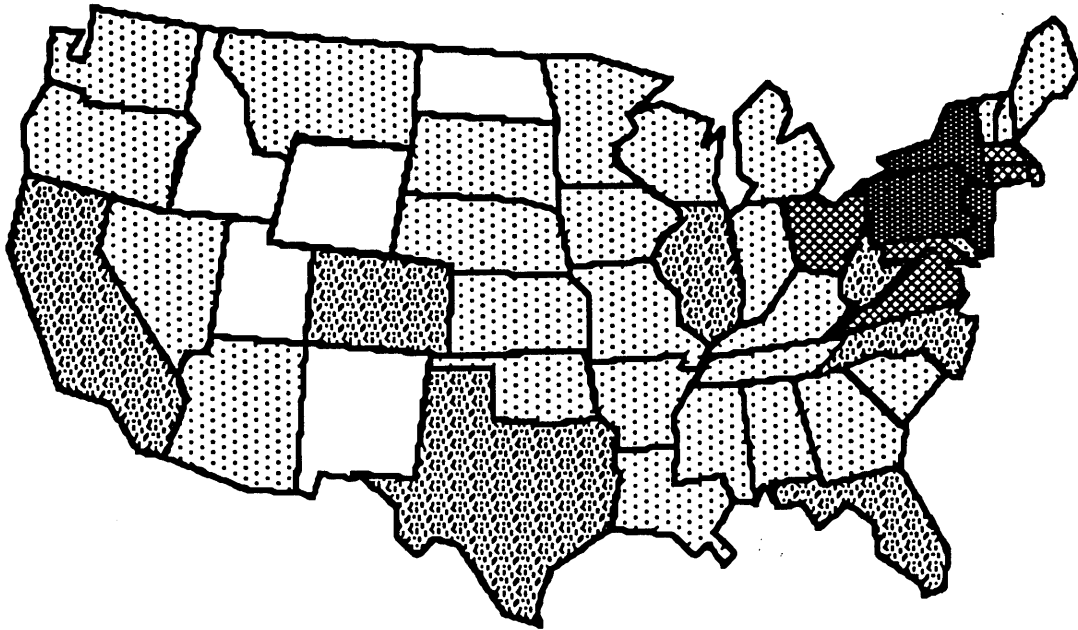
**Freshmen Applicant Activity
By College
Entering Fall Semesters 1983 to 1987**



College	Applicant Activity	1983	1984	1985	1986	1987
CIT	Applied	2,231	2,634	2,451	2,365	2,501
	Admitted	1,053	1,160	1,139	1,109	1,080
	Net Paid Deposit	389	349	388	342	332
	Yield %	37%	30%	34%	31%	31%
CFA	Applied	1,067	1,078	1,133	1,283	1,462
	Admitted	483	525	498	593	661
	Net Paid Deposit	215	237	211	253	278
	Yield %	45%	45%	42%	43%	42%
H&SS	Applied	837	1,077	915	1,045	1,243
	Admitted	717	857	749	819	879
	Net Paid Deposit	236	262	257	266	256
	Yield %	33%	31%	34%	32%	29%
IM	Applied	280	333	257	304	319
	Admitted	165	180	163	161	171
	Net Paid Deposit	50	58	68	50	56
	Yield %	30%	32%	42%	31%	33%
MCS	Applied	1,243	1,318	1,133	1,046	1,234
	Admitted	869	834	797	765	860
	Net Paid Deposit	291	261	252	254	244
	Yield %	33%	31%	32%	33%	28%
CMU	Applied	5,658	6,440	5,889	6,043	6,759
	Admitted	3,287	3,556	3,346	3,447	3,651
	Net Paid Deposit	1,181	1,167	1,176	1,165	1,166
	Yield %	36%	33%	35%	34%	32%

CARNEGIE MELLON UNIVERSITY

**Enrolled Freshmen
By Region and State
Entering Fall Semester 1987**



Region / State	FR	Region / State	FR	Region / State	FR	Region / State	FR
New England		South		Midwest		West	
Connecticut	49	Alabama	3	Illinois	20	Alaska	1
Maine	4	Florida	14	Indiana	5	Arizona	2
Massachusetts	62	Georgia	5	Iowa	1	California	17
New Hampshire	3	Kentucky	6	Kansas	5	Colorado	11
Rhode Island	7	Louisiana	6	Michigan	5	Hawaii	9
Vermont	3	Mississippi	2	Minnesota	3	Idaho	0
TOTAL	128	North Carolina	10	Missouri	4	Montana	2
PERCENT OF TOTAL	11%	South Carolina	1	Nebraska	3	Nevada	3
Middle States		Tennessee	7	North Dakota	0	Oregon	4
Delaware	3	Virginia	34	Ohio	64	Utah	0
District of Columbia	10	TOTAL	68	South Dakota	1	Washington	8
Maryland	55	PERCENT OF TOTAL	8%	West Virginia	15	Wyoming	0
New Jersey	94	Southwest		Wisconsin	5	TOTAL	57
New York	135	Arkansas	1	TOTAL	131	PERCENT OF TOTAL	5%
Pennsylvania	399	New Mexico	0	PERCENT OF TOTAL	11%	U.S. TOTAL	1,121
TOTAL	696	Oklahoma	5	U.S. Territories	2	PERCENT OF TOTAL	96%
PERCENT OF TOTAL	60%	Texas	13	Unknown	4	Foreign Countries	41
		TOTAL	19			TOTAL	1,166
		PERCENT OF TOTAL	2%				

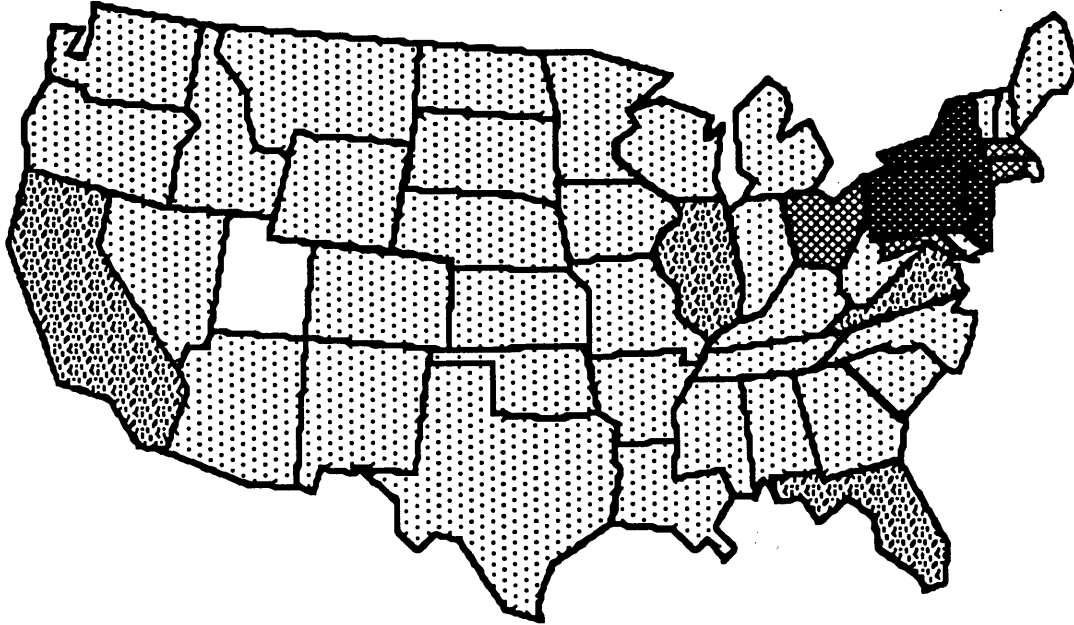
CARNEGIE MELLON UNIVERSITY

**Headcount Enrollment
By Department, Level and Status
Fall Semester 1987**

College	Department	Undergraduate			Graduate			Total Students		
		Full	Part	Total	Full	Part	Total	Full	Part	Total
CIT	Biomedical E.	0	0	0	3	0	3	3	0	3
	Chemical E.	132	1	133	73	24	97	205	25	230
	Civil E.	63	2	65	52	24	76	115	26	141
	E & C E.	397	20	417	202	25	227	599	45	644
	EPP	0	0	0	23	14	37	23	14	37
	Mfg. E.	0	0	0	5	1	6	5	1	6
	Mechanical E.	252	9	261	70	25	95	322	34	356
	MEMS	70	6	76	65	15	80	135	21	156
	Nuclear E.	0	0	0	0	2	2	0	2	2
	No Major Dept.	324	0	324	0	1	1	324	1	325
TOTAL CIT		1,238	38	1,276	493	131	624	1,731	169	1,900
CFA	Architecture	240	18	258	51	12	63	291	30	321
	Art	199	8	207	10	1	11	209	9	218
	Design	182	15	197	0	3	3	182	18	200
	Drama	148	2	150	23	12	35	171	14	185
	Music	109	2	111	3	31	34	112	33	145
	TOTAL CFA	878	45	923	87	59	146	965	104	1,069
H&SS	Economics	72	2	74	0	0	0	72	2	74
	English	115	8	123	48	35	83	163	43	206
	History	28	0	28	12	47	59	40	47	87
	IM - H&SS	69	0	69	0	0	0	69	0	69
	Philosophy	5	2	7	4	2	6	9	4	13
	Psychology	45	3	48	27	3	30	72	6	78
	S & D S.	129	5	134	2	1	3	131	6	137
	Statistics	2	0	2	26	3	29	28	3	31
	Student Def'd	5	0	5	0	0	0	5	0	5
	No Major Dept.	515	11	526	0	0	0	515	11	526
TOTAL H&SS	985	31	1,016	119	91	210	1,104	122	1,226	
IM	241	4	245	0	0	0	241	4	245	
MCS	Biology	68	2	70	38	2	40	106	4	110
	Chemistry	62	2	64	46	12	58	108	14	122
	Math	264	30	294	42	5	47	306	35	341
	Physics	88	3	91	67	8	75	155	11	166
	No Major Dept.	297	1	298	0	0	0	297	1	298
TOTAL MCS	779	38	817	193	27	220	972	65	1,037	
CS	0	0	0	161	4	165	161	4	165	
GSIA	0	0	0	413	162	575	413	162	575	
SUPA	12	1	13	146	326	472	158	327	485	
NON-DEGREE	0	0	0	0	0	0	4	210	214	
TOTAL		4,133	157	4,290	1,612	800	2,412	5,749	1,167	6,916

CARNEGIE MELLON UNIVERSITY

**Undergraduate Headcount Enrollment
By Region and State
Fall Semester 1987**



Region / State	UG	Region / State	UG	Region / State	UG	Region / State	UG
New England		South		Midwest		West	
Connecticut	161	Alabama	6	Illinois	76	Alaska	3
Maine	20	Florida	67	Indiana	11	Arizona	6
Massachusetts	202	Georgia	21	Iowa	4	California	71
New Hampshire	30	Kentucky	12	Kansas	11	Colorado	41
Rhode Island	19	Louisiana	7	Michigan	31	Hawaii	16
Vermont	14	Mississippi	2	Minnesota	13	Idaho	3
TOTAL	446	North Carolina	23	Missouri	16	Montana	5
PERCENT OF TOTAL	10%	South Carolina	8	Nebraska	4	Nevada	2
		Tennessee	21	North Dakota	1	Oregon	26
Middle States		Virginia	97	Ohio	201	Utah	0
Delaware	14	TOTAL	264	South Dakota	2	Washington	16
District of Columbia	24	PERCENT OF TOTAL	6%	West Virginia	38	Wyoming	1
Maryland	218	Southwest		Wisconsin	23	TOTAL	190
New Jersey	360	Arkansas	5	TOTAL	431	PERCENT OF TOTAL	4%
New York	508	New Mexico	5	PERCENT OF TOTAL	10%	U.S. TOTAL	4,153
Pennsylvania	1,608	Oklahoma	9	U.S. Territories	3	PERCENT OF TOTAL	97%
TOTAL	2,732	Texas	30	Unknown	38	Foreign Countries	137
PERCENT OF TOTAL	64%	TOTAL	49			TOTAL	4,290
		PERCENT OF TOTAL	1%				

CARNEGIE MELLON UNIVERSITY

**Undergraduate and Graduate Headcount Enrollment
By Country of Citizenship
Fall Semester 1987**

Country	Undergraduate			Graduate		
	Full	Part	Total	Full	Part	Total
Argentina	0	0	0	2	1	3
Australia	1	0	1	7	0	7
Belgium	0	0	0	10	0	10
Brazil	0	0	0	7	1	8
Canada	1	0	1	31	6	37
China (People's Republic)	1	0	1	76	13	89
China (Taiwan)	5	0	5	39	12	51
Colombia	0	0	0	0	1	1
Dominican Republic	1	0	1	0	1	1
Ecuador	1	0	1	0	0	0
France	1	0	1	9	1	10
West Germany	1	0	1	9	4	13
Greece	0	0	0	12	2	14
Guatemala	0	0	0	0	1	1
Hong Kong	6	0	6	9	1	10
Iceland	0	0	0	0	1	1
India	13	0	13	104	13	117
Indonesia	1	0	1	11	1	12
Iran	0	0	0	3	0	3
Ireland	0	0	0	3	0	3
Israel	0	0	0	10	1	11
Italy	1	0	1	7	0	7
Japan	2	0	2	37	0	37
Kenya	0	0	0	1	0	1
Lebanon	0	0	0	5	0	5
Libya	0	0	0	0	1	1
Malaysia	6	0	6	5	0	5
Mexico	0	0	0	4	3	7
Netherlands	1	0	1	3	1	4
Norway	1	0	1	2	0	2
Pakistan	0	0	0	6	0	6
Peru	1	0	1	2	2	4
Philippines	2	0	2	3	0	3
Poland	0	0	0	1	0	1
South Africa	0	0	0	4	0	4
South Korea	10	1	11	40	5	45
Spain	1	0	1	11	1	12
Sweden	1	0	1	0	1	1
Switzerland	5	0	5	3	0	3
Thailand	1	0	1	3	0	3
Turkey	0	0	0	4	2	6
United Kingdom	6	0	6	15	2	17
United States	3,998	155	4,153	1,067	706	1,773
Venezuela	0	0	0	3	1	4
Other	65	1	66	44	15	59
TOTAL	4,133	157	4,290	1,612	800	2,412

CARNEGIE MELLON UNIVERSITY

**Headcount Enrollment
By Department, Rank and Sex
Fall Semester 1987**

College	Department	Undergraduate			Graduate			Total Students		
		Male	Female	Total	Male	Female	Total	Male	Female	Total
CIT	Biomedical E.	0	0	0	1	2	3	1	2	3
	Chemical E.	96	37	133	65	32	97	161	69	230
	Civil E.	48	17	65	71	5	76	119	22	141
	E & C E.	387	30	417	198	29	227	585	59	644
	EPP	0	0	0	27	10	37	27	10	37
	Mfg. E.	0	0	0	5	1	6	5	1	6
	Mechanical E.	224	37	261	89	6	95	313	43	356
	MEMS	51	25	76	75	5	80	126	30	156
	Nuclear E.	0	0	0	2	0	2	2	0	2
	No Major Dept.	281	43	324	0	1	1	281	44	325
	TOTAL CIT	1,087	189	1,276	533	91	624	1,620	280	1,900
CFA	Architecture	178	80	258	42	21	63	220	101	321
	Art	73	134	207	8	3	11	81	137	218
	Design	83	114	197	3	0	3	86	114	200
	Drama	79	71	150	24	11	35	103	82	185
	Music	44	67	111	18	16	34	62	83	145
	TOTAL CFA	457	466	923	95	51	146	552	517	1,069
H&SS	Economics	57	17	74	0	0	0	57	17	74
	English	42	81	123	26	57	83	68	138	206
	History	15	13	28	33	26	59	48	39	87
	IM - H&SS	46	23	69	0	0	0	46	23	69
	Philosophy	6	1	7	6	0	6	12	1	13
	Psychology	21	27	48	24	6	30	45	33	78
	S & D S.	79	55	134	2	1	3	81	56	137
	Statistics	2	0	2	20	9	29	22	9	31
	Student Def'd.	3	2	5	0	0	0	3	2	5
	No Major Dept.	287	239	526	0	0	0	287	239	526
	TOTAL H&SS	558	458	1,016	111	99	210	669	557	1,226
IM	154	91	245	0	0	0	154	91	245	
MCS	Biology	40	30	70	21	19	40	61	49	110
	Chemistry	41	23	64	43	15	58	84	38	122
	Math	252	42	294	39	8	47	291	50	341
	Physics	84	7	91	66	9	75	150	16	166
	No Major Dept.	235	63	298	0	0	0	235	63	298
TOTAL MCS	652	165	817	169	51	220	821	216	1,037	
CS	0	0	0	141	24	165	141	24	165	
GSIA	0	0	0	456	119	575	456	119	575	
SUPA	3	10	13	228	244	472	231	254	485	
NON-DEGREE	0	0	0	0	0	0	107	107	214	
TOTAL	2,911	1,379	4,290	1,733	679	2,412	4,751	2,165	6,916	

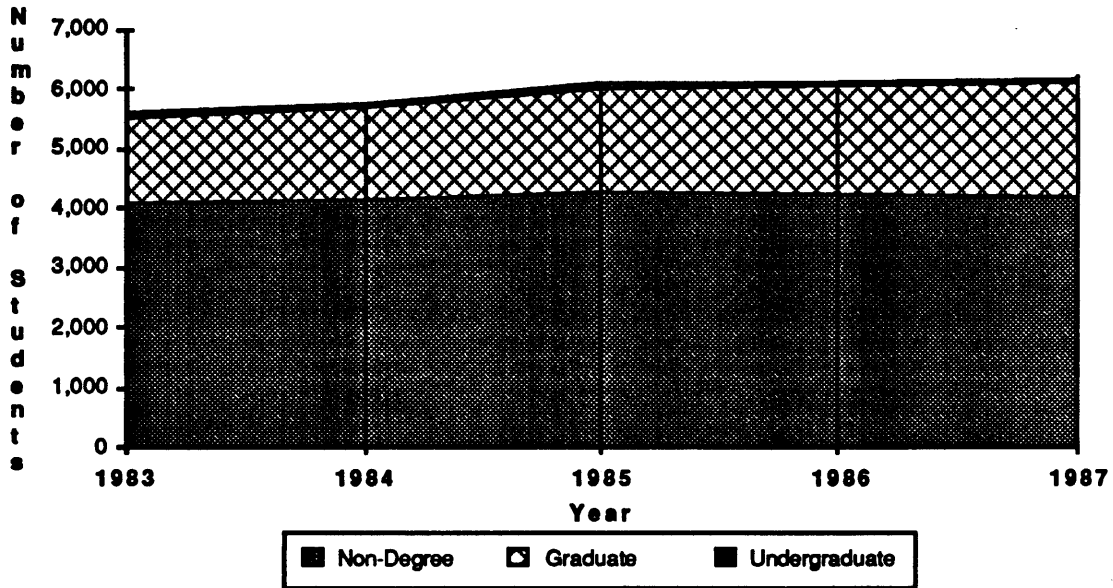
CARNEGIE MELLON UNIVERSITY

**Full-Time Equivalent (FTE) Enrollment
By Department and Class
Fall Semester 1987**

College	Department	Undergraduate				Total Undergraduate	Total Graduate	Total FTE
		Fresh.	Soph.	Junr.	Senr.			
CIT	Biomedical E.	0.0	0.0	0.0	0.0	0.0	3.0	3.0
	Chemical E.	0.0	41.0	46.0	43.7	130.7	80.5	211.2
	Civil E.	0.0	18.0	18.0	27.2	63.2	63.3	126.5
	E & C E.	0.0	129.0	135.0	137.6	401.6	211.8	613.4
	EPP	0.0	0.0	0.0	0.0	0.0	26.1	26.1
	Mfg. E.	0.0	0.0	0.0	0.0	0.0	5.1	5.1
	Mechanical E.	0.0	93.0	84.0	80.2	257.2	79.1	336.3
	MEMS	0.0	13.0	28.0	28.1	69.1	69.3	138.4
	Nuclear E.	0.0	0.0	0.0	0.0	0.0	0.3	0.3
	No Major Dept.	322.0	2.0	0.0	0.0	324.0	1.0	325.0
	TOTAL CIT	322.0	296.0	311.0	316.8	1,245.8	539.5	1,785.3
CFA	Architecture	88.0	51.7	38.4	75.4	253.5	53.5	307.0
	Art	60.9	52.8	37.1	53.0	203.8	10.6	214.4
	Design	51.0	59.0	43.7	38.4	192.1	0.8	192.9
	Drama	57.8	31.0	30.0	28.0	146.8	31.5	178.3
	Music	41.7	37.0	20.0	11.2	109.9	20.9	130.8
	TOTAL CFA	299.4	231.5	169.2	206.0	906.1	117.3	1,023.4
H&SS	Economics	0.0	2.0	31.0	39.7	72.7	0.0	72.7
	English	0.0	2.0	58.5	56.9	117.4	54.0	171.4
	History	0.0	0.0	18.0	10.0	28.0	21.0	49.0
	IM - H&SS	41.0	27.0	1.0	0.0	69.0	0.0	69.0
	Philosophy	0.0	1.0	4.0	1.3	6.3	5.5	11.8
	Psychology	0.0	2.0	21.0	24.9	47.9	27.4	75.3
	S & D S.	0.0	1.0	64.5	67.2	132.7	3.0	135.7
	Statistics	0.0	0.0	1.0	1.0	2.0	26.6	28.6
	Student Def'd	0.0	0.0	1.0	4.0	5.0	0.0	5.0
	No Major Dept.	257.5	238.0	20.3	4.0	519.8	0.0	519.8
TOTAL H&SS	298.5	273.0	220.3	209.0	1,000.8	137.5	1,138.3	
IM	15.0	30.0	106.0	91.9	242.9	0.0	242.9	
MCS	Biology	0.0	29.0	16.0	23.2	68.2	38.6	106.8
	Chemistry	0.0	28.0	13.0	22.0	63.0	47.2	110.2
	Math	0.0	41.8	106.7	131.1	279.6	43.1	322.7
	Physics	0.0	40.0	29.0	18.3	87.3	68.9	156.2
	No Major Dept.	234.0	61.0	1.5	1.0	297.5	0.0	297.5
	TOTAL MCS	234.0	199.8	166.2	195.6	795.6	197.8	993.4
CS	0.0	0.0	0.0	0.0	0.0	163.2	163.2	
GSIA	0.0	0.0	0.0	0.0	0.0	492.3	492.3	
SUPA	0.0	0.0	0.0	13.0	13.0	258.8	271.8	
NON-DEGREE	0.0	0.0	0.0	0.0	0.0	0.0	71.6	
TOTAL	1,168.9	1,030.3	972.7	1,032.3	4,204.2	1,906.4	6,182.2	

CARNEGIE MELLON UNIVERSITY

**Full-Time Equivalent (FTE) Enrollment
By College and Level
Fall Semesters 1983 to 1987**



		1983	1984	1985	1986	1987
CIT	Undergraduate	1,393.3	1,324.0	1,375.6	1,326.8	1,245.8
	Graduate	455.4	475.4	501.6	559.0	539.5
	TOTAL CIT	1,848.7	1,799.4	1,877.2	1,885.8	1,785.3
CFA	Undergraduate	893.6	864.7	827.6	839.5	906.1
	Graduate	121.0	115.3	118.7	115.8	117.3
	TOTAL CFA	1,014.6	980.0	946.3	955.3	1,023.4
H&SS	Undergraduate	812.9	867.9	955.6	975.5	1,000.8
	Graduate	113.0	112.1	127.8	120.1	137.5
	TOTAL H&SS	925.9	980.0	1,083.4	1,095.6	1,138.3
IM	Undergraduate	152.0	228.5	247.7	243.3	242.9
	TOTAL IM	152.0	228.5	247.7	243.3	242.9
MCS	Undergraduate	838.8	867.9	879.4	856.4	795.6
	Graduate	177.3	201.4	217.3	211.2	197.8
	TOTAL MCS	1,016.1	1,069.3	1,096.7	1,067.6	993.4
CS	Graduate	117.1	117.8	127.0	148.9	163.2
	TOTAL CS	117.1	117.8	127.0	148.9	163.2
GSIA	Undergraduate	0.0	0.0	0.0	0.6	0.0
	Graduate	295.1	285.3	340.2	391.2	492.3
	TOTAL GSIA	295.1	285.3	340.2	391.8	492.3
SUPA	Undergraduate	4.0	7.1	4.0	2.0	13.0
	Graduate	163.8	232.5	271.0	257.3	258.8
	TOTAL SUPA	167.8	239.6	275.0	259.3	271.8
CMU	Undergraduate	4,094.6	4,160.1	4,289.9	4,244.1	4,204.2
	Graduate	1,442.7	1,539.8	1,703.6	1,803.5	1,906.4
	Non-Degree	65.1	64.7	84.4	75.8	71.6
	TOTAL	5,602.4	5,764.6	6,077.9	6,123.4	6,182.2

CARNEGIE MELLON UNIVERSITY

**Distribution of Students
By Housing Type, Level and Sex
Fall Semester 1987**

		<u>Carnegie Mellon Housing</u>			Non-University Housing	Total
		On-Campus	Off-Campus	Fraternity & Sorority		
Undergraduate						
Freshman	Male	670	72	0	54	796
	Female	335	32	1	6	374
Sophomore	Male	415	68	185	41	709
	Female	206	35	30	56	327
Junior	Male	273	30	130	242	675
	Female	136	16	25	150	327
Senior	Male	169	29	105	428	731
	Female	85	16	24	226	351
Undergraduate						
	Male	1,527	199	420	765	2,911
	Female	762	99	80	438	1,379
	TOTAL	2,289	298	500	1,203	4,290
Graduate						
	Male	4	3	0	1,726	1,733
	Female	2	2	0	675	679
	TOTAL	6	5	0	2,401	2,412
Non-Degree						
	Male	0	0	0	107	107
	Female	0	0	0	107	107
	TOTAL	0	0	0	214	214
TOTAL						
	Male	1,531	202	420	2,598	4,751
	Female	764	101	80	1,220	2,165
	TOTAL	2,295	303	500	3,818	6,916

CARNEGIE MELLON UNIVERSITY

**Total Degrees Granted
By Department and Level
Academic Year 1986-87**

College		Bachelors	Masters	Doctorates	TOTAL
	Department				
CIT	Chemical E.	42	13	4	59
	Civil E.	41	25	3	69
	E & C E.	140	54	18	212
	E. & P P	0	3	3	6
	Mfg. E.	0	11	0	11
	Mechanical E.	65	26	8	99
	MEMS	17	16	8	41
	Nuclear E.	0	0	0	0
	TOTAL CIT	305	148	44	497
CFA	Architecture	40	13	0	53
	Art	48	4	0	52
	Design	26	0	0	26
	Drama	18	14	0	32
	Music	14	6	0	20
	TOTAL CFA	146	37	0	183
	H&SS	Economics	30	0	0
English		50	22	7	79
History		13	6	4	23
Philosophy		1	0	0	1
Psychology		10	7	5	22
S & D S.		53	0	0	53
Statistics		2	12	1	15
Student Defined		1	1	0	2
TOTAL H&SS		160	48	17	225
IM	94	0	0	94	
MCS	Biology	19	1	4	24
	Chemistry	13	9	4	26
	Math	148	14	3	165
	Physics	25	12	10	47
	TOTAL MCS	205	36	21	262
CS	0	7	11	18	
GSIA	0	152	13	165	
SUPA	0	177	4	181	
TOTAL	910	605	110	1,625	

CARNEGIE MELLON UNIVERSITY

**Total Degrees Granted
By College and Level
Academic Years 1982-83 to 1986-87**

College	Degrees	1983	1984	1985	1986	1987
CIT	Bachelors	287	324	277	271	305
	Masters	123	117	155	131	148
	Doctorates	36	40	58	51	44
	TOTAL CIT	446	481	490	453	497
CFA	Bachelors	188	207	188	152	146
	Masters	32	27	45	47	37
	Doctorates	2	1	0	0	0
	TOTAL CFA	222	235	233	199	183
H&SS	Bachelors	109	132	152	167	160
	Masters	24	30	37	39	48
	Doctorates	18	15	18	19	17
	TOTAL H&SS	151	177	207	225	225
IM	Bachelors	86	51	72	88	94
	TOTAL IM	86	51	72	88	94
MCS	Bachelors	145	150	160	181	205
	Masters	37	40	30	46	36
	Doctorates	12	20	22	26	21
	TOTAL MCS	194	210	212	253	262
CS	Masters	17	10	4	9	7
	Doctorates	14	9	15	11	11
	TOTAL CS	31	19	19	20	18
GSIA	Masters	123	121	134	129	152
	Doctorates	11	10	10	5	13
	TOTAL GSIA	134	131	144	134	165
SUPA	Masters	43	53	92	150	177
	Doctorates	3	1	2	3	4
	TOTAL SUPA	46	54	94	153	181
CMU	Bachelors	815	864	849	859	910
	Masters	399	398	497	551	605
	Doctorates	96	96	125	115	110
TOTAL		1,310	1,358	1,471	1,525	1,625

CARNEGIE MELLON UNIVERSITY

**Students
Additional Facts and Figures**

**Scholastic Aptitude Test (SAT) Scores
Enrolled Freshmen Fall 1987**

	<u>CMU Freshmen</u>	<u>National Average</u>
Average Verbal	570	430
Average Math	652	476

99% of Enrolled Freshmen submitted SAT scores.

**High School Rank
Enrolled Freshmen Fall 1987**

Percentile	<u><40%</u>	<u>40-49%</u>	<u>40-59%</u>	<u>60-69%</u>	<u>70-79%</u>	<u>80-89%</u>	<u>90-100%</u>
Percent in Rank	2.5%	1.2%	2.3%	4.6%	10.5%	23.7%	55.2%

Average High School Rank: 87th Percentile

88% of Enrolled Freshmen submitted their High School Rank.

**Average Quality Point Average (QPA)
By Class, Fall 1987**

Freshmen	2.8
Sophomore	2.8
Junior	2.9
Senior	2.9

**Retention Rates
Fall 1980 to Fall 1985**

Entering Freshmen, Fall 1980 (N=1,091)

<u>Fall Semester</u>	<u>% Still Active</u>	<u>% Graduated</u>
Fall 81	88%	
Fall 82	76%	
Fall 83	70%	2%
Fall 84	13%	56%
Fall 85	3%	9%
Total		<u>67%</u>

TEACHING

CARNEGIE MELLON UNIVERSITY

**Units Taught
By Department, Semester and Level
Academic Year 1986-87**

College	Department	Fall Semester				Spring Semester				YEAR TOTAL
		Underg.	Grad.	Other	Total	Underg.	Grad.	Other	Total	
CIT	Biomedical E.	435	159	9	603	579	172	6	757	1,360
	Chemical E.	2,652	3,024	0	5,676	2,326	2,997	27	5,350	11,026
	Civil E.	3,681	2,112	18	5,811	2,958	2,133	54	5,145	10,956
	E & C E.	11,139	9,309	294	20,742	10,536	9,235	243	20,014	40,756
	EPP	783	818	18	1,619	1,191	499	18	1,708	3,327
	Mechanical E.	8,251	3,598	51	11,900	6,761	3,253	19	10,033	21,933
	MEMS	2,971	3,263	10	6,244	2,928	3,230	36	6,194	12,438
	Nuclear E.	0	10	0	10	0	10	0	10	20
	Interdiscp.	1,554	303	0	1,857	2,004	217	0	2,221	4,078
	TOTAL CIT	31,466	22,596	400	54,462	29,283	21,746	403	51,432	105,894
CFA	Architecture	7,071	2,180	27	9,278	6,831	2,100	0	8,931	18,209
	Art	9,949	495	134	10,578	9,363	528	150	10,041	20,619
	Design	6,146	225	45	6,416	6,384	84	66	6,534	12,950
	Drama	5,749	1,432	42	7,223	5,674	1,488	39	7,201	14,424
	Music	5,518	708	24	6,250	5,631	636	24	6,291	12,541
	Interdiscp.	900	51	36	987	1,152	51	96	1,299	2,286
	TOTAL CFA	35,333	5,091	308	40,732	35,035	4,887	375	40,297	81,029
H&SS	English	12,660	1,558	360	14,578	13,644	1,445	225	15,314	29,892
	History	13,936	849	219	15,004	14,781	691	243	15,715	30,719
	Philosophy	3,789	213	117	4,119	4,314	153	132	4,599	8,718
	Psychology	8,025	1,111	261	9,397	6,618	998	132	7,748	17,145
	S & D S.	8,058	123	57	8,238	6,885	368	78	7,331	15,569
	Statistics	6,249	1,535	33	7,817	4,518	1,553	45	6,116	13,933
	Interdiscp.	774	0	9	783	405	0	9	414	1,197
	TOTAL H&SS	53,491	5,389	1,056	59,936	51,165	5,208	864	57,237	117,173
MCS	Biology	3,383	1,512	9	4,904	2,547	1,349	36	3,932	8,836
	Chemistry	7,499	2,065	0	9,564	6,444	1,589	0	8,033	17,597
	Math	22,667	2,569	245	25,481	20,668	2,289	253	23,210	48,691
	Physics	12,466	2,677	20	15,163	10,110	2,497	20	12,627	27,790
	Interdiscp.	0	0	0	0	0	24	0	24	24
TOTAL MCS	46,015	8,823	274	55,112	39,769	7,748	309	47,826	102,938	
CS	8,995	5,864	443	15,302	11,573	5,366	293	17,232	32,534	
GSIA	Economics	8,559	27	18	8,604	7,965	0	54	8,019	16,623
	IM	8,796	72	117	8,985	10,917	27	63	11,007	19,992
	GSIA	66	21,067	120	21,253	180	19,481	168	19,829	41,082
	TOTAL GSIA	17,421	21,166	255	38,842	19,062	19,508	285	38,855	77,697
SUPA	270	13,196	165	13,631	468	13,099	168	13,735	27,366	
OTHER	5,103	99	54	5,256	2,384	123	105	2,612	7,868	
TOTAL	198,094	82,224	2,955	283,273	188,739	77,685	2,802	269,226	552,499	

CARNEGIE MELLON UNIVERSITY

**Units Taught
By College and Level
Academic Years 1982-83 to 1986-87**

College	Level	1982-83	1983-84	1984-85	1985-86	1986-87
CIT	Undergraduate	62,312	61,353	59,908	60,179	60,749
	Graduate	36,195	38,663	38,722	41,359	44,342
	Other	1,615	993	1,033	1,117	803
	TOTAL CIT	100,122	101,009	99,663	102,655	105,894
CFA	Undergraduate	78,235	70,867	68,303	67,801	70,368
	Graduate	11,471	10,669	9,765	9,924	9,978
	Other	596	393	471	564	683
	TOTAL CFA	90,302	81,929	78,539	78,289	81,029
H&SS	Undergraduate	90,502	93,673	97,935	100,705	104,656
	Graduate	8,983	10,764	10,337	10,441	10,597
	Other	1,056	1,503	1,394	1,626	1,920
	TOTAL H&SS	100,541	105,940	109,666	112,772	117,173
MCS	Undergraduate	93,941	93,863	91,296	91,478	85,784
	Graduate	15,082	15,271	17,048	17,890	16,571
	Other	1,024	1,114	852	789	583
	TOTAL MCS	110,047	110,248	109,196	110,157	102,938
CS	Undergraduate	15,403	17,951	18,371	19,430	20,568
	Graduate	9,167	9,183	9,509	10,219	11,230
	Other	621	600	726	541	736
	TOTAL CS	25,191	27,734	28,606	30,190	32,534
GSIA	Undergraduate	29,476	27,503	34,554	37,347	36,483
	Graduate	31,020	31,939	32,190	37,480	40,674
	Other	579	361	507	294	540
	TOTAL GSIA	61,075	59,803	67,251	75,121	77,697
SUPA	Undergraduate	294	570	741	480	738
	Graduate	11,514	17,212	24,519	27,885	26,295
	Other	45	57	111	288	333
	TOTAL SUPA	11,853	17,839	25,371	28,653	27,366
OTHER	Undergraduate	3,805	3,703	3,546	8,199	7,487
	Graduate	180	166	210	241	222
	Other	80	80	60	164	159
	TOTAL OTHER	4,065	3,949	3,816	8,604	7,868
CMU	Undergraduate	373,968	369,483	374,654	385,619	386,833
	Graduate	123,612	133,867	142,300	155,439	159,909
	Other	5,616	5,101	5,154	5,383	5,757
TOTAL	503,196	508,451	522,108	546,441	552,499	

CARNEGIE MELLON UNIVERSITY

**Summary Faculty Course Evaluation (FCE) Scores
By Department and Semester
Academic Year 1986-87**

College	Department	Fall Semester			Spring Semester		
		Overall Instructor Rating	Overall Course Rating	Percent Responded	Overall Instructor Rating	Overall Course Rating	Percent Responded
CIT	Biomedical E.	3.10	3.10	79%	4.05	4.06	80%
	Chemical E.	3.88	3.61	77%	3.78	3.63	64%
	Civil E.	3.68	3.67	79%	3.95	3.85	77%
	E & C E.	3.51	3.42	62%	3.82	3.76	64%
	EPP	3.68	3.68	70%	3.52	3.51	50%
	Mechanical E.	3.80	3.71	65%	3.73	3.69	66%
	MEMS	3.83	3.78	78%	3.56	3.61	80%
	Interdiscp.	3.40	3.39	56%	3.48	3.51	67%
	TOTAL CIT	3.67	3.59	68%	3.75	3.71	66%
CFA	Architecture	3.66	3.77	67%	3.75	3.80	69%
	Art	4.24	4.27	71%	4.32	4.27	71%
	Design	3.82	3.82	80%	3.72	3.77	78%
	Drama	4.09	4.09	63%	4.01	4.02	70%
	Music	4.60	4.55	82%	4.35	4.31	81%
	Interdiscp.	4.57	4.51	74%	4.64	4.64	82%
		TOTAL CFA	4.06	4.09	71%	4.03	4.03
H&SS	English	4.15	3.99	81%	4.23	4.08	79%
	History	4.34	4.09	72%	4.21	4.04	76%
	Modern Lang.	4.37	4.26	79%	4.57	4.37	77%
	Philosophy	4.05	3.80	71%	4.21	3.97	53%
	Psychology	4.06	3.97	62%	3.46	3.43	44%
	S & D S.	3.58	3.30	65%	3.74	3.16	57%
	Statistics	3.46	3.12	72%	4.09	3.82	61%
	Interdiscp.	4.26	4.05	65%	0.00	0.00	0%
	TOTAL H&SS	3.97	3.75	72%	4.07	3.83	66%
MCS	Biology	4.30	4.28	73%	3.64	3.55	75%
	Chemistry	3.84	3.72	54%	3.88	3.50	67%
	Math	3.86	3.68	53%	3.88	3.63	53%
	Physics	3.99	3.88	63%	3.68	3.45	57%
	Interdiscp.	0.00	0.00	0%	4.50	3.50	100%
		TOTAL MCS	3.91	3.77	57%	3.81	3.55
	CS	3.85	3.51	52%	3.92	3.70	55%
	ECONOMICS	3.54	3.39	57%	3.43	3.20	62%
	IM	3.99	3.89	66%	3.86	3.69	68%
	AERO. SCI.	4.44	4.21	85%	4.03	3.83	87%
	MIL. SCI.	4.58	4.45	81%	4.63	4.26	90%
	PHYS. ED.	4.53	4.47	57%	4.72	4.61	73%

Scale: 1 - Poor; 2 - Fair; 3 - Average; 4 - Good; 5 - Excellent

CARNEGIE MELLON UNIVERSITY

**Summary Faculty Course Evaluation (FCE) Scores
By Department and Year
Academic Years 1982-83 to 1986-87**

College	Department	Overall Instructor Rating					Overall Course Rating				
		1982-83	1983-84	1984-85	1985-86	1986-87	1982-83	1983-84	1984-85	1985-86	1986-87
CIT	Biomedical E.	3.72	3.39	3.64	3.72	3.68	3.73	3.48	3.76	3.82	3.68
	Chemical E.	3.52	3.58	3.90	3.51	3.83	3.48	3.50	3.73	3.53	3.62
	Civil E.	3.98	4.08	3.88	3.76	3.80	3.86	3.88	3.83	3.76	3.75
	E & C E.	3.62	3.72	3.75	3.92	3.69	3.47	3.50	3.60	3.75	3.61
	EPP	3.61	3.95	3.61	3.58	3.59	3.54	3.76	3.43	3.63	3.58
	Mechanical E.	3.98	3.85	3.87	3.83	3.77	3.81	3.77	3.78	3.73	3.70
	MEMS	3.77	3.75	3.76	3.67	3.69	3.71	3.59	3.58	3.62	3.69
	Interdiscp.	3.89	3.03	3.83	2.33	3.44	3.94	2.81	3.82	2.15	3.45
	TOTAL CIT	3.75	3.74	3.79	3.47	3.71	3.64	3.59	3.67	3.36	3.65
CFA	Architecture	3.75	3.70	3.88	3.73	3.70	3.74	3.75	3.79	3.81	3.78
	Art	4.30	4.13	4.16	4.20	4.27	4.25	4.09	4.13	4.19	4.27
	Design	3.64	3.69	3.85	3.86	3.77	3.56	3.72	3.87	3.93	3.80
	Drama	4.27	4.13	4.27	4.35	4.05	4.22	4.05	4.26	4.37	4.06
	Music	4.33	4.46	4.66	4.49	4.48	4.29	4.47	4.61	4.46	4.44
	Interdiscp.	4.51	4.47	4.46	4.50	4.61	4.49	4.43	4.39	4.56	4.58
	TOTAL CFA	4.02	3.99	4.06	4.09	4.05	3.97	3.99	4.06	4.12	4.06
	H&SS	English	4.00	3.95	4.08	4.10	4.19	3.83	3.76	3.89	3.92
History		4.15	4.19	4.16	4.16	4.27	3.75	3.83	3.80	3.91	4.06
Modern Lang.		4.18	4.20	4.16	4.37	4.45	4.07	4.03	4.09	4.22	4.31
Philosophy		3.67	3.82	4.15	4.02	4.12	3.47	3.38	3.75	3.72	3.88
Psychology		3.57	3.62	3.99	3.72	3.79	3.41	3.49	3.90	3.57	3.72
S & D S.		3.89	3.60	3.63	3.89	3.66	3.35	3.40	3.30	3.60	3.23
Statistics		3.42	3.26	3.76	3.41	3.71	3.35	3.19	3.61	3.10	3.39
Interdiscp.		3.82	4.19	3.30	3.88	4.26	3.74	3.84	3.17	3.74	4.05
TOTAL H&SS	3.90	3.83	3.96	3.93	4.02	3.63	3.62	3.73	3.70	3.78	
MCS	Biology	3.65	3.49	3.99	3.87	3.85	3.71	3.37	3.98	3.87	3.78
	Chemistry	3.76	3.68	3.64	3.83	3.86	3.56	3.45	3.51	3.63	3.62
	Math	3.78	3.82	3.87	3.86	3.87	3.56	3.68	3.66	3.63	3.66
	Physics	3.96	3.86	3.86	4.00	3.86	3.80	3.82	3.71	3.85	3.70
	Interdiscp.	0.00	0.00	3.31	4.00	0.00	0.00	0.00	3.08	4.00	0.00
	TOTAL MCS	3.82	3.78	3.82	3.89	3.87	3.64	3.65	3.64	3.71	3.67
CS	3.48	3.53	3.81	3.78	3.88	3.22	3.30	3.58	3.55	3.60	
ECONOMICS	3.41	3.19	3.44	3.50	3.48	3.13	2.98	3.29	3.34	3.29	
IM	3.90	4.15	4.02	3.99	3.93	3.77	3.90	3.94	3.85	3.79	
AERO. SCI.	3.94	4.27	4.23	4.45	4.24	4.22	4.40	4.05	4.22	4.02	
MIL. SCI.	4.19	3.67	3.93	4.41	4.59	4.33	3.72	3.82	4.32	4.41	
PHYS. ED.	4.74	4.59	4.59	4.33	4.66	4.66	4.50	4.49	4.33	4.57	

Scale: 1 - Poor; 2 - Fair; 3 - Average; 4 - Good; 5 - Excellent

CARNEGIE MELLON UNIVERSITY

**Teaching
Additional Facts and Figures**

**Units Taken at PCHE Colleges by CMU Students, by Level and College
Units Taught to PCHE Students, by College
Academic Year 1986-87**

<u>College</u>	<u>Units Taken</u>			<u>Units Taught</u>
	Undergraduate	Graduate	Total	
CIT	363	129	492	175
CFA	384	90	474	63
H&SS	725	99	824	384
MCS	432	54	486	140
IM	183	0	183	---
CS	0	48	48	48
GSIA	0	78	78	162
SUPA	0	168	168	108
OTHER	---	---	---	12
TOTAL	2,087	666	2,753	1,092

Pittsburgh Council of Higher Education (PCHE) Schools:

Allegheny Community College	Duquesne University*	Pittsburgh Theological Sem.
Carlow College	La Roche College	Robert Morris College
Chatham College*	Point Park College*	University of Pittsburgh*

*Schools Attended by CMU Students.

The University Teaching Center

The University Teaching Center, initiated in January 1982, organizes thirteen programs. Most of these are conducted by faculty members, assisted by Center personnel. The programs are:

Academic Orientation for Entering Freshmen

The ESL (English as a Second Language) Center

Workshops for Teaching Assistants (about 15 workshops annually for 150 T.A.'s a year)

Assistance to Departments in Developing Teaching Components for PhD programs

Procrastinators Seminar (for students who are at least a year behind in finishing their dissertations)

Consultations about Faculty Course Evaluations (about 12 faculty each semester)

Assistance in Obtaining Feedback from Students for Faculty Members (about 10 faculty each semester)

Videotaping Services (Providing taping and confidential critiques of teaching methods for about 50 instructors each semester))

Trouble Shooting

Faculty Luncheon Seminar: Six Elements of Good Teaching (Fall, about 70 participants)

Faculty Luncheon Seminar--Various Topics of Interest (Spring, about 30 participants)

A Publication Series on University Teaching (25 papers available).

Publication of About Teaching at Carnegie Mellon: A Handbook.

FACULTY

CARNEGIE MELLON UNIVERSITY

**Total Teaching Faculty
By Department, Category and Status
Fall Semester 1987**

College		Regular	Special			TOTAL		
		Faculty	Teaching Faculty*			TEACHING FACULTY		
		Full	Full	Part	Total	Full	Part	Total
CIT	Biomedical E.	1.00	1.00	1.00	2.00	2.00	1.00	3.00
	Chemical E.	15.50	1.00	1.00	2.00	16.50	1.00	17.50
	Civil E.	13.00	2.00	2.00	4.00	15.00	2.00	17.00
	E & C.E.	28.70	2.00	1.00	3.00	30.70	1.00	31.70
	EPP	7.75	0.00	2.00	2.00	7.75	2.00	9.75
	Mechanical E.	17.50	2.00	3.00	5.00	19.50	3.00	22.50
	MEMS	16.50	0.00	2.00	2.00	16.50	2.00	18.50
	Dean's Ofc.	0.50	0.00	0.00	0.00	0.50	0.00	0.50
	TOTAL CIT	100.45	8.00	12.00	20.00	108.45	12.00	120.45
CFA	Architecture	18.50	0.00	13.00	13.00	18.50	13.00	31.50
	Art	20.00	1.00	17.00	18.00	21.00	17.00	38.00
	Design	14.00	0.00	4.00	4.00	14.00	4.00	18.00
	Drama	22.00	3.00	1.00	4.00	25.00	1.00	26.00
	Music	13.00	2.00	43.00	45.00	15.00	43.00	58.00
	Dean's Ofc.	1.00	0.00	4.00	4.00	1.00	4.00	5.00
	Pre-Col. Mus.	0.00	0.00	25.00	25.00	0.00	25.00	25.00
	TOTAL CFA	88.50	6.00	107.00	113.00	94.50	107.00	201.50
H&SS	English	27.50	0.00	3.00	3.00	27.50	3.00	30.50
	History	23.00	3.00	3.00	6.00	26.00	3.00	29.00
	Philosophy	11.25	1.00	1.00	2.00	12.25	1.00	13.25
	Psychology	18.00	3.00	3.00	6.00	21.00	3.00	24.00
	S & D S.	15.50	0.00	1.00	1.00	15.50	1.00	16.50
	Statistics	9.50	4.00	0.00	4.00	13.50	0.00	13.50
	Dean's Ofc.	0.50	0.00	0.00	0.00	0.50	0.00	0.50
	Teaching Center	0.00	1.00	0.00	1.00	1.00	0.00	1.00
	TOTAL H&SS	105.25	12.00	11.00	23.00	117.25	11.00	128.25
MCS	Biology	18.50	2.00	1.00	3.00	20.50	1.00	21.50
	Chemistry	22.00	1.00	1.00	2.00	23.00	1.00	24.00
	Math	20.50	8.00	0.00	8.00	28.50	0.00	28.50
	Physics	30.05	1.00	0.00	1.00	31.05	0.00	31.05
	Dean's Ofc.	2.50	0.00	1.00	1.00	2.50	1.00	3.50
TOTAL MCS	93.55	12.00	3.00	15.00	105.55	3.00	108.55	
CS	31.20	8.00	2.00	10.00	39.20	2.00	41.20	
GSIA	63.92	11.00	9.00	20.00	74.92	9.00	83.92	
SUPA	19.83	2.00	12.00	14.00	21.83	12.00	33.83	
OTHER	14.30	4.00	1.00	5.00	18.30	1.00	19.30	
TOTAL	517.00	63.00	157.00	220.00	580.00	157.00	737.00	

*Excluding Administrators with Special Faculty Appointments.

CARNEGIE MELLON UNIVERSITY

**Full-Time Regular Faculty
By Rank and Department
Fall Semester 1987**

College Department		University Professor	Professor	Associate Professor	Assistant Professor	Instructor	TOTAL
CIT	Biomedical E.	0.00	1.00	0.00	0.00	0.00	1.00
	Chemical E.	0.00	8.00	5.50	2.00	0.00	15.50
	Civil E.	1.00	7.00	2.00	3.00	0.00	13.00
	E & C E.	0.00	13.70	7.00	8.00	0.00	28.70
	EPP	0.00	3.50	3.25	1.00	0.00	7.75
	Mechanical E.	0.00	10.50	1.00	6.00	0.00	17.50
	MEMS	1.00	9.50	3.00	3.00	0.00	16.50
	Dean's Ofc.	0.00	0.50	0.00	0.00	0.00	0.50
	TOTAL CIT	2.00	53.70	21.75	23.00	0.00	100.45
CFA	Architecture	0.00	7.00	2.50	8.00	1.00	18.50
	Art	0.00	7.00	11.00	2.00	0.00	20.00
	Design	0.00	2.00	9.00	3.00	0.00	14.00
	Drama	0.00	5.00	4.00	10.00	3.00	22.00
	Music	0.00	7.00	4.00	1.00	1.00	13.00
	Dean's Ofc.	0.00	1.00	0.00	0.00	0.00	1.00
	TOTAL CFA	0.00	29.00	30.50	24.00	5.00	88.50
	H&SS	English	0.00	7.00	13.50	7.00	0.00
History		0.00	11.00	7.00	5.00	0.00	23.00
Philosophy		0.00	2.00	3.25	6.00	0.00	11.25
Psychology		1.00	10.00	3.00	4.00	0.00	18.00
S & D S.		1.00	3.00	8.50	3.00	0.00	15.50
Statistics		1.00	2.50	3.00	3.00	0.00	9.50
Dean's Ofc.		0.00	0.00	0.50	0.00	0.00	0.50
TOTAL H&SS		3.00	35.50	38.75	28.00	0.00	105.25
MCS	Biology	0.00	7.50	7.00	4.00	0.00	18.50
	Chemistry	1.00	10.00	5.00	6.00	0.00	22.00
	Math	0.00	14.50	3.00	3.00	0.00	20.50
	Physics	1.00	20.05	3.00	6.00	0.00	30.05
	Dean's Ofc.	0.00	2.50	0.00	0.00	0.00	2.50
	TOTAL MCS	2.00	54.55	18.00	19.00	0.00	93.55
CS	3.00	6.70	10.50	11.00	0.00	31.20	
GSIA	1.00	20.17	12.25	26.50	4.00	63.92	
SUPA	0.00	6.33	5.00	8.50	0.00	19.83	
OTHER	0.00	12.05	2.25	0.00	0.00	14.30	
TOTAL	11.00	218.00	139.00	140.00	9.00	517.00	

CARNEGIE MELLON UNIVERSITY

**Full-Time Regular Faculty
By Tenure Status and Department
Fall Semester 1987**

College Department		Tenured	Tenure Stream	Instructors	TOTAL
CIT	Biomedical E.	1.00	0.00	0.00	1.00
	Chemical E.	8.00	7.50	0.00	15.50
	Civil E.	8.50	4.50	0.00	13.00
	E & C E.	14.70	14.00	0.00	28.70
	EPP	4.25	3.50	0.00	7.75
	Mechanical E.	10.50	7.00	0.00	17.50
	MEMS	10.50	6.00	0.00	16.50
	Dean's Ofc.	0.50	0.00	0.00	0.50
	TOTAL CIT	57.95	42.50	0.00	100.45
CFA	Architecture	7.50	10.00	1.00	18.50
	Art	10.00	10.00	0.00	20.00
	Design	5.00	9.00	0.00	14.00
	Drama	6.00	13.00	3.00	22.00
	Music	9.00	3.00	1.00	13.00
	Dean's Ofc.	1.00	0.00	0.00	1.00
	TOTAL CFA	38.50	45.00	5.00	88.50
H&SS	English	14.50	13.00	0.00	27.50
	History	17.00	6.00	0.00	23.00
	Philosophy	5.00	6.25	0.00	11.25
	Psychology	14.00	4.00	0.00	18.00
	S & D S.	7.00	8.50	0.00	15.50
	Statistics	4.50	5.00	0.00	9.50
	Dean's Ofc.	0.50	0.00	0.00	0.50
	TOTAL H&SS	62.50	42.75	0.00	105.25
MCS	Biology	12.50	6.00	0.00	18.50
	Chemistry	16.00	6.00	0.00	22.00
	Math	17.50	3.00	0.00	20.50
	Physics	21.05	9.00	0.00	30.05
	Dean's Ofc.	2.50	0.00	0.00	2.50
	TOTAL MCS	69.55	24.00	0.00	93.55
CS	13.70	17.50	0.00	31.20	
GSIA	25.42	34.50	4.00	63.92	
SUPA	7.33	12.50	0.00	19.83	
OTHER	13.05	1.25	0.00	14.30	
TOTAL	288.00	220.00	9.00	517.00	

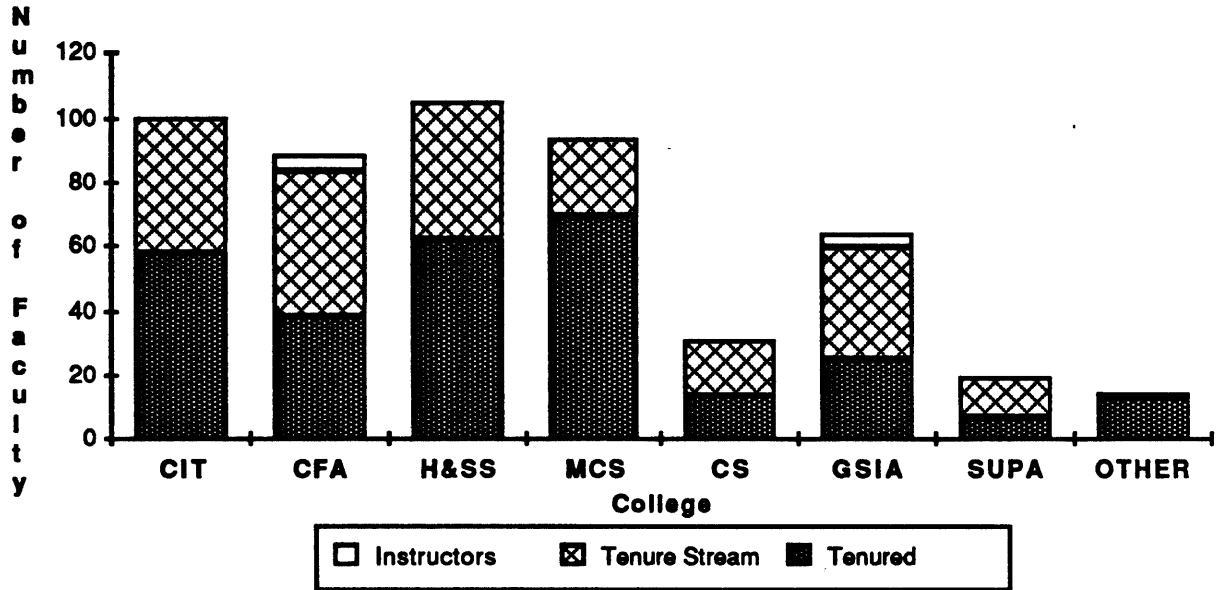
CARNEGIE MELLON UNIVERSITY

**Full-Time Regular Faculty
By College and Tenure Status
Fall Semesters 1983 to 1987**

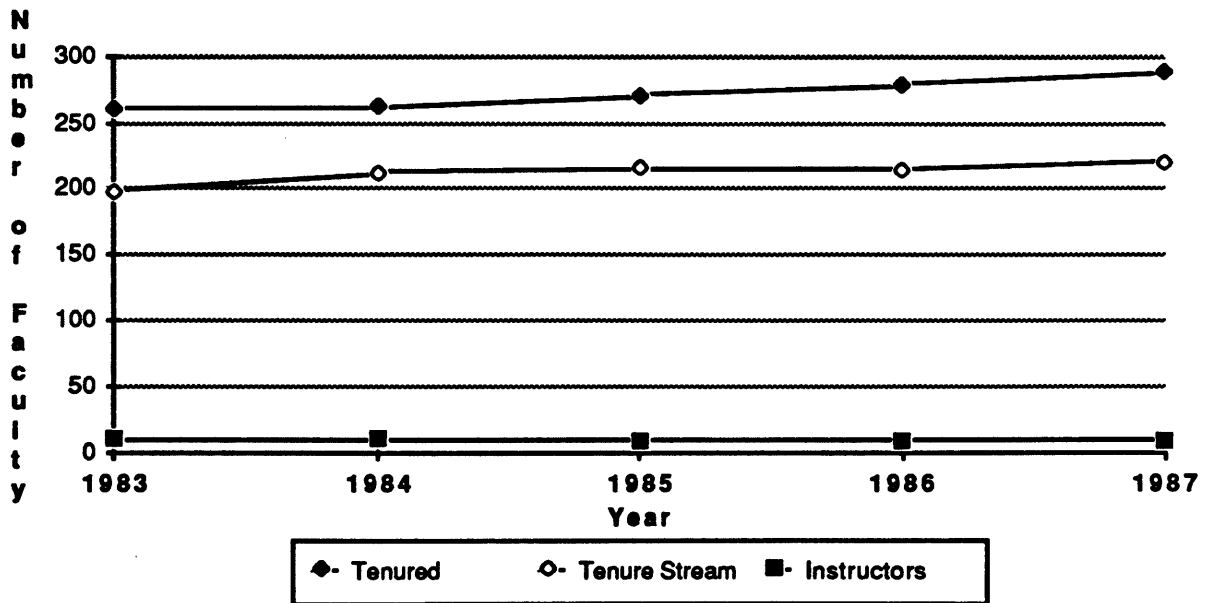
College	Tenure Status	1983	1984	1985	1986	1987
CIT	Tenured	57.50	55.00	52.75	58.95	57.95
	Tenure Stream	45.80	47.50	48.50	41.50	42.50
	Instructors	2.00	1.00	0.00	0.00	0.00
	Total	105.30	103.50	101.25	100.45	100.45
CFA	Tenured	36.50	34.50	35.50	35.50	38.50
	Tenure Stream	38.00	41.00	38.00	41.00	45.00
	Instructors	3.00	4.00	4.00	3.00	5.00
	Total	77.50	79.50	77.50	79.50	88.50
H&SS	Tenured	49.50	52.50	56.00	59.50	62.50
	Tenure Stream	42.75	48.25	47.25	44.75	42.75
	Instructors	2.00	2.00	3.00	0.00	0.00
	Total	94.25	102.75	106.25	104.25	105.25
MCS	Tenured	64.00	68.50	69.75	68.55	69.55
	Tenure Stream	19.00	15.00	19.00	19.00	24.00
	Instructors	3.00	0.00	0.00	0.00	0.00
	Total	86.00	83.50	88.75	87.55	93.55
CS	Tenured	11.50	7.50	9.50	13.70	13.70
	Tenure Stream	14.50	17.50	15.50	17.00	17.50
	Instructors	0.00	0.00	0.00	0.00	0.00
	Total	26.00	25.00	25.00	30.70	31.20
GSIA	Tenured	19.00	23.00	22.25	20.25	25.42
	Tenure Stream	30.15	29.75	33.67	37.67	34.50
	Instructors	1.00	3.00	3.00	6.00	4.00
	Total	50.15	55.75	58.92	63.92	63.92
SUPA	Tenured	8.00	8.00	10.00	8.50	7.33
	Tenure Stream	7.80	11.50	12.33	12.33	12.50
	Instructors	0.00	1.00	0.00	1.00	0.00
	Total	15.80	20.50	22.33	21.83	19.83
OTHER	Tenured	15.00	13.00	15.25	14.05	13.05
	Tenure Stream	0.00	1.50	0.75	0.75	1.25
	Instructors	0.00	0.00	0.00	0.00	0.00
	Total	15.00	14.50	16.00	14.80	14.30
CMU	Tenured	261.00	262.00	271.00	279.00	288.00
	Tenure Stream	198.00	212.00	215.00	214.00	220.00
	Instructors	11.00	11.00	10.00	10.00	9.00
	Total	470.00	485.00	496.00	503.00	517.00

CARNEGIE MELLON UNIVERSITY

**Full-Time Regular Faculty
By Tenure Status and College
Fall Semester 1987**

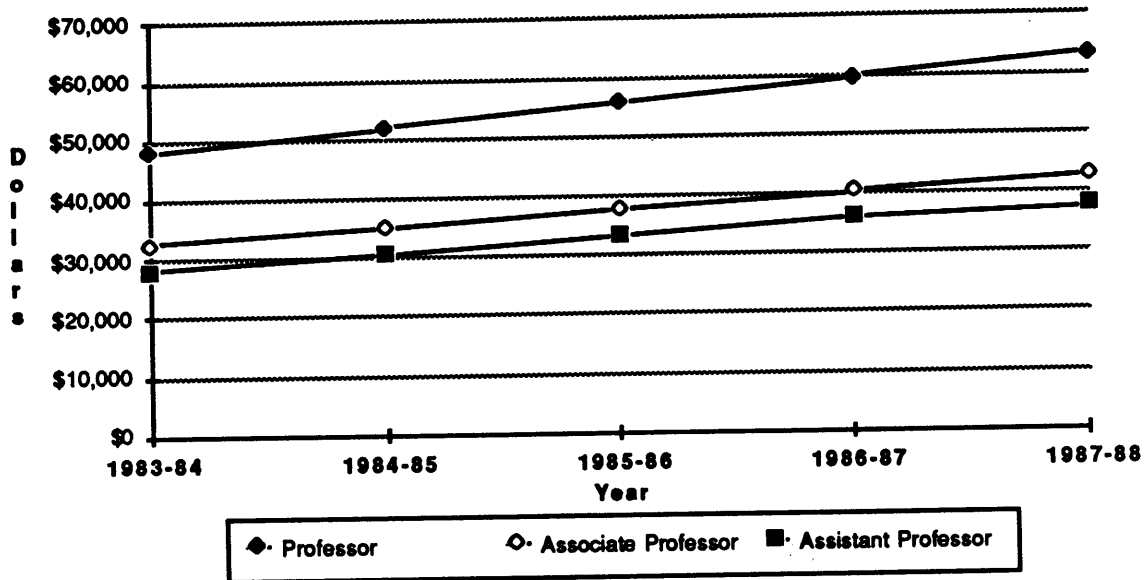


**Full Time Regular Faculty
By Tenure Status
Fall Semesters 1983 to 1987**



CARNEGIE MELLON UNIVERSITY

**Average Faculty Salaries
for Full-Time Regular Faculty
Academic Year 1983-84 to 1987-88**



Average Salaries	1983-84	1984-85	1985-86	1986-87	1987-88
Professor	\$48,200	\$52,000	\$55,800	\$59,600	\$63,400
Associate Professor	32,700	35,100	37,900	40,500	42,800
Assistant Professor	28,200	30,600	33,400	36,100	37,800

Source: AAUP Salary Survey

CARNEGIE MELLON UNIVERSITY

**Special Teaching Faculty*
By Department, Category and Status
Fall Semester 1987**

College	Department	Special Appts.			Visiting Appts.			TOTAL		
		Full	Part	Total	Full	Part	Total	Full	Part	Total
CIT	Biomedical E.	1	1	2	0	0	0	1	1	2
	Chemical E.	1	1	2	0	0	0	1	1	2
	Civil E.	0	2	2	2	0	2	2	2	4
	E & C E.	0	0	0	2	1	3	2	1	3
	EPP	0	1	1	0	1	1	0	2	2
	Mechanical E.	2	3	5	0	0	0	2	3	5
	MEMS	0	2	2	0	0	0	0	2	2
	Dean's Ofc.	0	0	0	0	0	0	0	0	0
	TOTAL CIT	4	10	14	4	2	6	8	12	20
CFA	Architecture	0	11	11	0	2	2	0	13	13
	Art	1	14	15	0	3	3	1	17	18
	Design	0	4	4	0	0	0	0	4	4
	Drama	0	0	0	3	1	4	3	1	4
	Music	1	43	44	1	0	1	2	43	45
	Dean's Ofc.	0	2	2	0	2	2	0	4	4
	Pre-Col. Mus.	0	25	25	0	0	0	0	25	25
	TOTAL CFA	2	99	101	4	8	12	6	107	113
H&SS	English	0	3	3	0	0	0	0	3	3
	History	2	3	5	1	0	1	3	3	6
	Philosophy	1	1	2	0	0	0	1	1	2
	Psychology	1	3	4	2	0	2	3	3	6
	S & D S.	0	1	1	0	0	0	0	1	1
	Statistics	1	0	1	3	0	3	4	0	4
	Dean's Ofc.	0	0	0	0	0	0	0	0	0
	Teaching Cente	1	0	1	0	0	0	1	0	1
TOTAL H&SS	6	11	17	6	0	6	12	11	23	
MCS	Biology	1	1	2	1	0	1	2	1	3
	Chemistry	1	1	2	0	0	0	1	1	2
	Math	2	0	2	6	0	6	8	0	8
	Physics	1	0	1	0	0	0	1	0	1
	Dean's Ofc.	0	1	1	0	0	0	0	1	1
TOTAL MCS	5	3	8	7	0	7	12	3	15	
CS	8	2	10	0	0	0	8	2	10	
GSIA	6	9	15	5	0	5	11	9	20	
SUPA	1	12	13	1	0	1	2	12	14	
OTHER	3	1	4	1	0	1	4	1	5	
TOTAL		35	147	182	28	10	38	63	157	220

*Excluding Administrators with Special Faculty Appointments.

CARNEGIE MELLON UNIVERSITY

**Faculty
Additional Facts and Figures**

**Demographics
Regular Faculty, Fall 1987**

Percent of Faculty by Sex

Male	86%
Female	14%

Percent of Faculty by Race

Asian	2%
Black	1%
Hispanic	1%
White	81%
Non-U.S. Citizen	15%

Percent of Faculty by Age

Under 30	4%
30 to 40	40%
40 to 50	29%
50 to 60	16%
Over 60	11%

Percent of Faculty with a Ph.D.

84%

Top Ten Institutions Granting Ph.D.'s to Faculty

Carnegie Mellon University	Harvard University
Stanford University	University of Michigan
Massachusetts Institute of Technology	California Institute of Technology
University of California, Berkeley	Cornell University
Yale University	University of Pittsburgh

50% of the Regular Faculty received degrees from the above institutions.

**Faculty Salary Comparisons
Regular Faculty
Percent Change, Fall 1982 to Fall 1986**

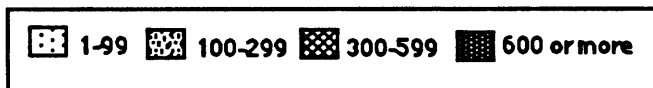
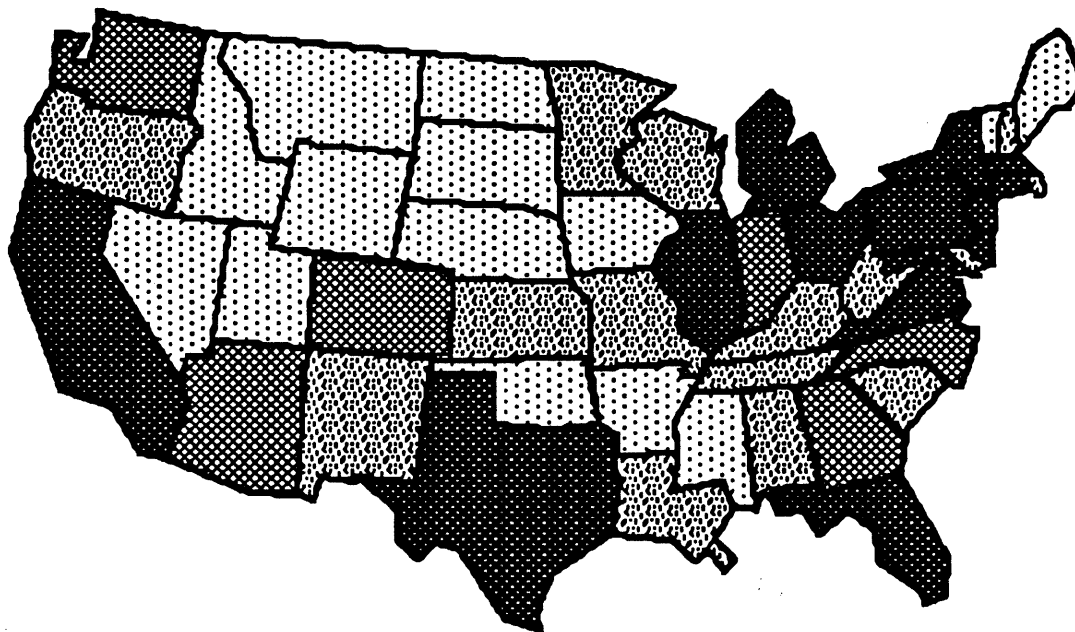
	<u>Prof.</u>	<u>Assoc.</u>	<u>Asst.</u>
	%	%	%
Carnegie Mellon	35 (2)	33 (3)	38 (2)*
U. of CA, Berkeley	45	42	48
Rice	35	23	23
Northwestern	33	32	38
U. of Michigan	32	35	37
Stanford	31	31	24
Cornell	30	32	31
Harvard	30	21	27
U. of Wisconsin	30	32	38
Yale	30	31	32
MIT	28	28	31
Purdue	28	24	30
RPI	28	25	33
Case Western	27	24	31
Washington U.	27	24	22
Lehigh	25	23	25
U. of Pennsylvania	23	29	30

* CMU Rank

ALUMNI

CARNEGIE MELLON UNIVERSITY

**Alumni
By Region and State
Through August 1987**



Region / State	AL	Region / State	AL	Region / State	AL	Region / State	AL
New England		South		Midwest		West	
Connecticut	936	Alabama	127	Illinois	1,003	Alaska	16
Maine	78	Florida	1,595	Indiana	352	Arizona	363
Massachusetts	1,474	Georgia	358	Iowa	62	California	3,671
New Hampshire	160	Kentucky	145	Kansas	113	Colorado	365
Rhode Island	93	Louisiana	129	Michigan	755	Hawaii	74
Vermont	77	Mississippi	30	Minnesota	232	Idaho	53
TOTAL	2,818	North Carolina	550	Missouri	239	Montana	11
PERCENT OF TOTAL	6%	South Carolina	254	Nebraska	32	Nevada	39
		Tennessee	230	North Dakota	7	Oregon	160
		Virginia	1,210	Ohio	2,258	Utah	47
		TOTAL	4,628	South Dakota	11	Washington	342
		PERCENT OF TOTAL	10%	West Virginia	291	Wyoming	23
				Wisconsin	222	TOTAL	5,164
				TOTAL	5,577	PERCENT OF TOTAL	11%
				PERCENT OF TOTAL	12%		
						U.S. TOTAL	41,084
						PERCENT OF TOTAL	89%
						Unknown	3,712
						Foreign Countries	1,275
						TOTAL	46,071

FINANCES

CARNEGIE MELLON UNIVERSITY

**Tuition and Fees
Academic Years 1983-84 to 1987-88**

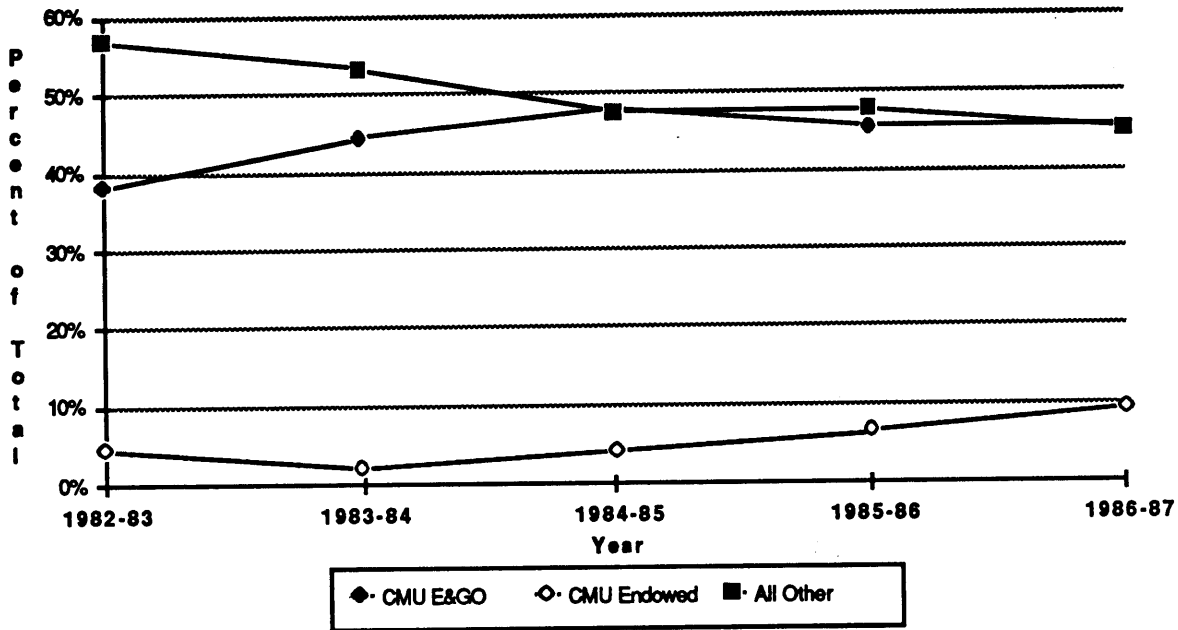
	1983-84	1984-85	1985-86	1986-87	1987-88
Undergraduate Tuition	\$7,500	\$8,400	\$9,400	\$10,250	\$11,100
Graduate Tuition					
CFA	\$8,200	\$9,100	\$10,000	\$10,500	\$11,200
CIT	8,200	9,100	10,000	11,000	11,850
H&SS	8,200	9,100	10,000	10,500	11,200
MCS	8,200	9,100	10,000	10,750	11,500
CS	8,200	9,100	10,000	11,000	11,850
GSIA	8,400	9,850	10,608	11,628	12,648
SUPA	8,400	9,400	10,000	11,000	11,900
Student Activities Fee	\$50	\$60	\$60	\$60	\$60

**Room and Board
Academic Years 1983-84 to 1987-88**

	1983-84	1984-85	1985-86	1986-87	1987-88
Average Room (Standard Double)	\$1,850	\$1,980	\$2,080	\$2,170	\$2,280
Average Board (19 Meals/Week)	\$1,246	\$1,344	\$1,425	\$1,503	\$1,548

CARNEGIE MELLON UNIVERSITY

**Undergraduate Scholarships & Grants
By Source, Percent of Total
Fiscal Years 1983 to 1987**



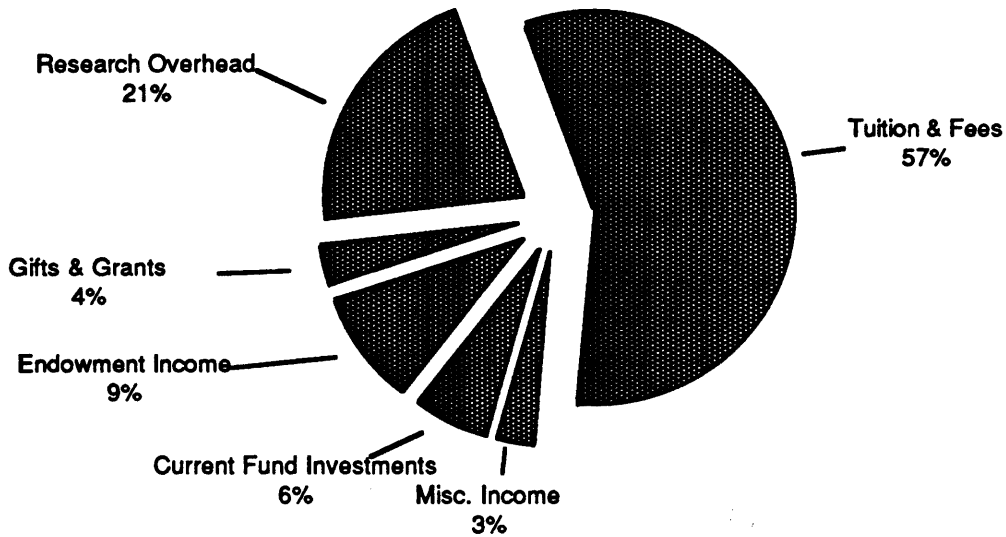
**All Other* includes Federal, State and Other Grant Resources.

**Undergraduate Financial Aid Resources
By Source
Fiscal Years 1983 to 1987
(Dollars in Thousands)**

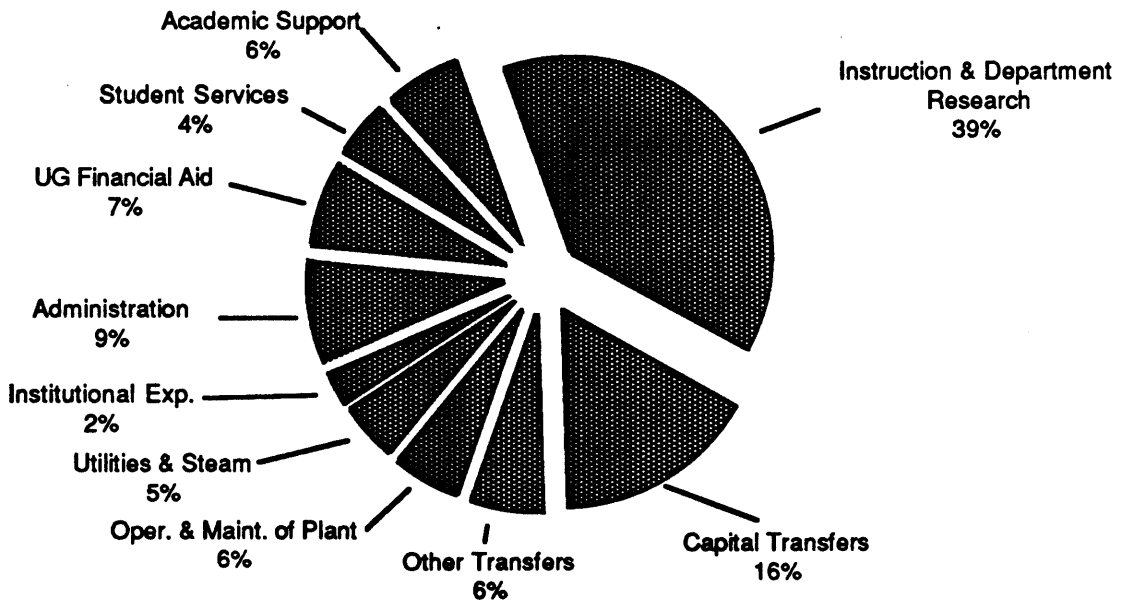
AID CATEGORIES	1983	1984	1985	1986	1987
Scholarships & Grants					
Federal - PELL	\$995	\$1,004	\$942	\$1,025	\$726
Federal - SEOG	1,574	1,628	1,641	1,641	1,641
State - PHEAA	1,286	1,078	1,107	1,178	1,223
Other State Grants	101	124	157	167	175
CMU E&GO	3,339	4,404	5,289	6,129	6,777
CMU Endowed	407	213	477	889	1,440
CMU Gifts and Grants	96	205	140	169	342
ROTC	500	697	694	890	954
Other Grant Resources	407	523	574	1,370	1,706
TOTAL SCHOLARSHIPS & GRANTS	\$8,705	\$9,876	\$11,021	\$13,458	\$14,984
Self-Help					
Workstudy	\$1,609	\$1,671	\$1,739	\$2,001	\$1,932
Loans	7,525	7,354	8,774	8,693	8,528
TOTAL SELF-HELP	\$9,134	\$9,025	\$10,513	\$10,694	\$10,460
Total Resources	\$17,839	\$18,901	\$21,534	\$24,152	\$25,444
% of Undergraduates with Need	68.0%	67.4%	62.2%	63.0%	62.0%

CARNEGIE MELLON UNIVERSITY

**Distribution of Educational and General Operating (E&GO) Income
Fiscal Year 1987
(Total = \$96,851,000)**

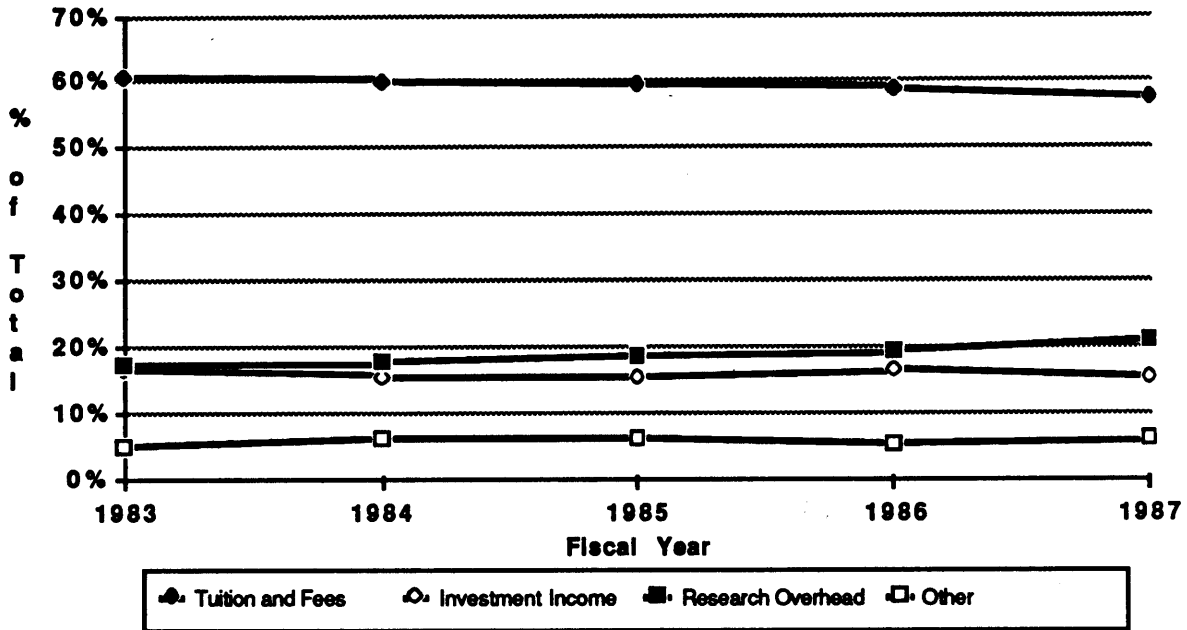


**Distribution of Educational and General Operating (E&GO) Expenditures and Transfers
Fiscal Year 1987
(Total = \$96,760,000)**



CARNEGIE MELLON UNIVERSITY

**Percent of Educational and General Operating (E&GO) Income*
by Source
Fiscal Years 1983 to 1987**



* "Investment income" includes endowment income and current fund investments. "Other" includes gifts and grants and miscellaneous income.

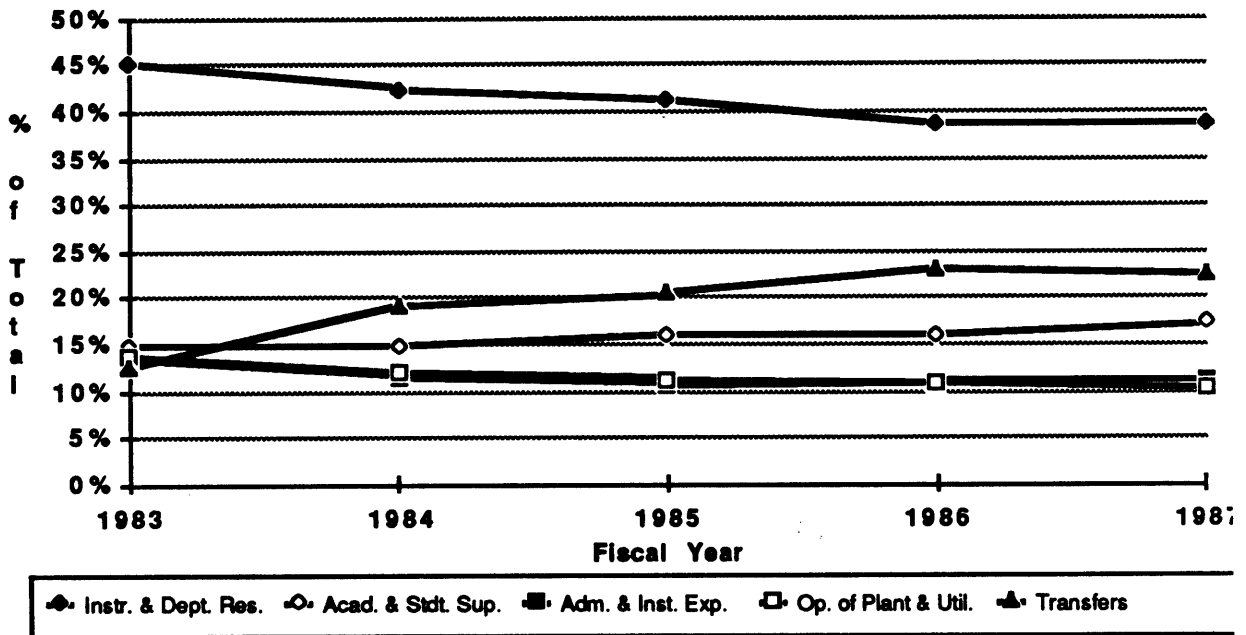
**Educational and General Operating (E&GO) Income*
by Source
Fiscal Years 1983 to 1987
(Dollars in Thousands)**

	1983	1984	1985	1986	1987
Income					
Tuition and Fees	\$33,065	\$38,997	\$44,452	\$50,925	\$55,591
Endowment Income	6,115	6,564	6,558	8,297	8,727
Current Fund Investments	2,954	3,590	5,073	6,185	6,093
Gifts and Grants	1,992	2,486	2,664	2,127	3,494
Research Overhead	9,573	11,623	14,069	16,755	20,558
Miscellaneous Income	716	1,569	1,956	2,504	2,388
TOTAL	\$54,415	\$64,829	\$74,772	\$86,793	\$96,851

*Excluding Management Centers.

CARNEGIE MELLON UNIVERSITY

**Percent of Educational and General Operating (E&GO) Expenditures and Transfers*
by Function
Fiscal Years 1983 to 1987**



Academic & Student Support includes Academic Support, Student Services and Undergraduate Financial Aid.

**Educational and General Operating (E&GO) Expenditures and Transfers*
by Function
Fiscal Years 1983 to 1987
(Dollars in Thousands)**

	1983	1984	1985	1986	1987
Expenditures					
Instruction & Department Research	\$24,552	\$27,429	\$30,796	\$33,510	\$37,402
Academic Support	2,278	2,586	3,738	4,558	5,867
Student Services	2,485	2,626	3,024	3,214	4,214
Undergraduate Financial Aid	3,339	4,406	5,289	6,129	6,777
Administration	5,663	6,093	6,569	7,908	8,357
Institutional Expense	1,685	1,410	1,465	1,768	2,367
Operation & Maintenance of Plant	4,042	4,305	4,644	5,244	5,355
Utilities & Steam	3,479	3,488	3,818	4,239	4,575
TOTAL	\$47,523	\$52,343	\$59,343	\$66,570	\$74,914
Transfers					
Capital	\$5,935	\$10,138	\$11,491	\$14,708	\$15,852
Other	871	2,264	3,857	5,435	5,994
TOTAL	\$6,806	\$12,402	\$15,348	\$20,143	\$21,846
TOTAL	\$54,329	\$64,745	\$74,691	\$86,713	\$96,760

*Excluding Management Centers

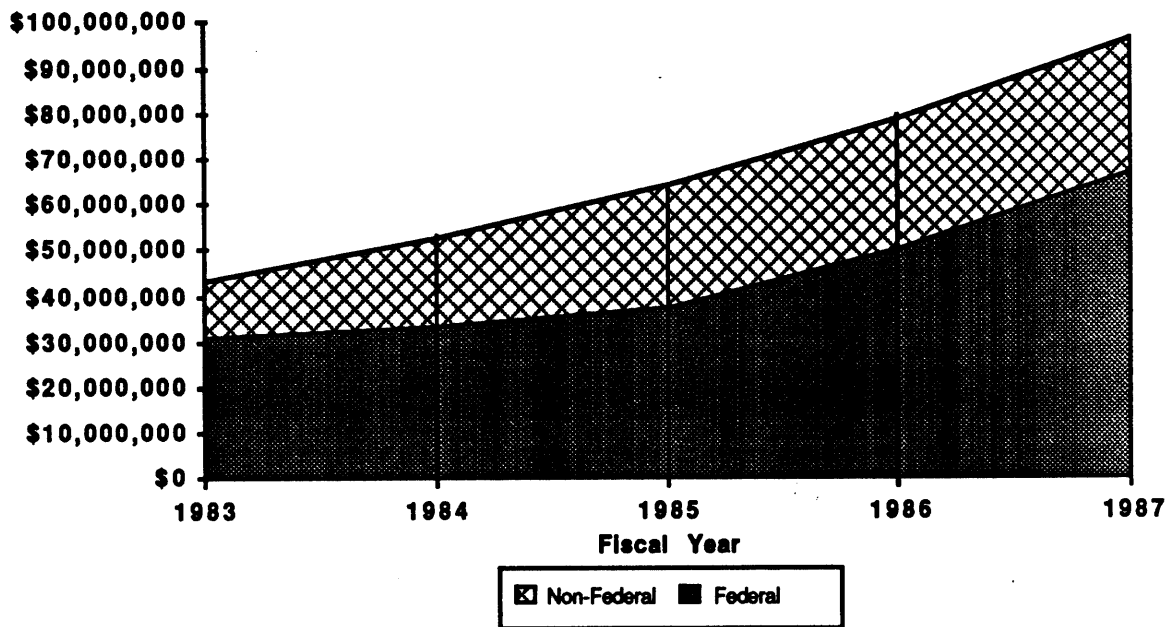
CARNEGIE MELLON UNIVERSITY

**Total Sponsored Research Costs
by College and Research Center
Fiscal Years 1983 to 1987
(Dollars in Thousands)**

	1983	1984	1985	1986	1987
Direct Costs					
CIT	\$6,974	\$9,208	\$10,170	\$12,207	\$14,088
CFA	164	337	404	233	329
H&SS	1,634	1,767	2,295	3,302	4,504
MCS	4,933	5,848	6,924	6,948	8,234
CS	7,728	10,029	11,531	13,803	16,692
GSIA	683	700	685	810	554
SUPA	751	346	467	381	434
ITC	0	1,800	3,704	2,323	1,951
MIR	5,049	4,576	4,884	5,495	6,069
Robotics	3,636	4,254	4,773	4,125	4,255
SEI	0	0	1,892	7,913	12,597
WPATC	0	70	229	1,325	1,471
Other	878	347	440	1,399	3,086
TOTAL	\$32,430	\$39,282	\$48,398	\$60,264	\$74,264
Indirect Costs					
CIT	\$2,495	\$3,185	\$3,489	\$3,926	\$4,951
CFA	53	125	143	81	145
H&SS	544	715	750	1,005	1,308
MCS	1,754	2,100	2,252	2,648	2,762
CS	2,262	3,056	3,824	4,501	5,170
GSIA	290	270	300	381	315
SUPA	320	132	132	169	83
ITC	0	1,098	1,533	1,486	1,619
MIR	1,884	1,717	1,871	2,207	2,239
Robotics	1,114	1,225	1,541	1,530	1,679
SEI	0	0	110	575	1,158
WPATC	0	0	0	0	0
Other	312	12	15	303	613
TOTAL	\$11,028	\$13,635	\$15,960	\$18,812	\$22,042
Total Sponsored Research Costs					
CIT	\$9,469	\$12,393	\$13,659	\$16,133	\$19,039
CFA	217	462	547	314	474
H&SS	2,178	2,482	3,045	4,307	5,812
MCS	6,687	7,948	9,176	9,596	10,996
CS	9,990	13,085	15,355	18,304	21,862
GSIA	973	970	985	1,191	869
SUPA	1,071	478	599	550	517
ITC	0	2,898	5,237	3,809	3,570
MIR	6,933	6,293	6,755	7,702	8,308
Robotics	4,750	5,479	6,314	5,655	5,934
SEI	0	0	2,002	8,488	13,755
WPATC	0	70	229	1,325	1,471
Other	1,190	359	455	1,702	3,699
TOTAL	\$43,458	\$52,917	\$64,358	\$79,076	\$96,306

CARNEGIE MELLON UNIVERSITY

**Total Sponsored Research Costs
by Source
Fiscal Years 1983 to 1987**

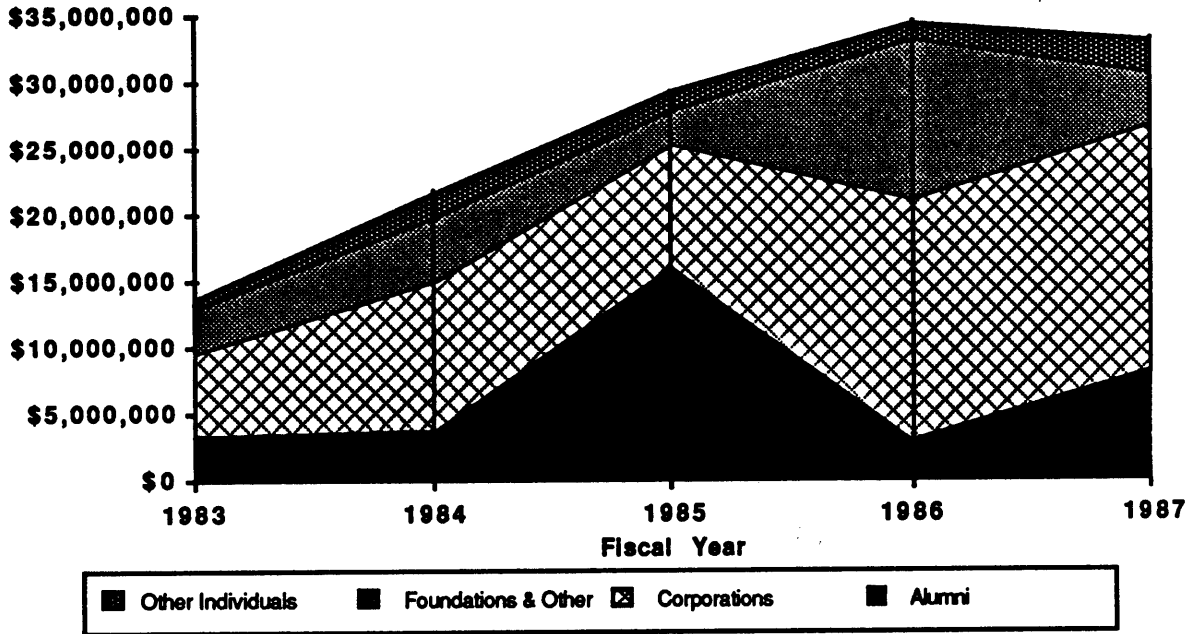


**Total Sponsored Research Costs
by Agency
Fiscal Years 1983 to 1987**

	1983	1984	1985	1986	1987
Federal					
Defense	\$13,495,152	\$15,653,325	\$19,588,251	\$29,431,236	\$39,876,261
National Science Foundation	7,319,000	7,547,600	7,508,956	8,490,842	15,153,898
Health & Human Services	4,472,931	4,642,809	5,312,074	6,159,148	6,648,486
Energy	3,962,093	3,399,379	3,495,484	3,273,420	3,343,418
Other Federal	1,992,271	2,379,397	2,070,003	2,840,093	2,549,617
TOTAL	\$31,241,447	\$33,622,510	\$37,974,768	\$50,194,739	\$67,571,680
Non-Federal					
Industrial	\$7,974,236	\$12,156,400	\$16,804,123	\$17,403,119	\$16,211,340
Other Non-Federal	4,242,287	7,138,150	9,579,162	11,478,126	12,522,544
TOTAL	\$12,216,523	\$19,294,550	\$26,383,285	\$28,881,245	\$28,733,884
TOTAL	\$43,457,970	\$52,917,060	\$64,358,053	\$79,075,984	\$96,305,564

CARNEGIE MELLON UNIVERSITY

**Total Giving
By Source
Fiscal Years 1983 to 1987**



**Voluntary Support
By Source and Purpose
Fiscal Years 1983 to 1987**

	1983	1984	1985	1986	1987
Current Operations					
Alumni	\$1,805,861	\$1,540,617	\$1,759,992	\$1,846,699	\$1,876,097
Other Individuals	353,441	476,885	545,626	588,449	842,186
Foundations & Other	3,306,456	4,312,937	2,301,095	6,116,363	2,802,792
Corporations	3,571,764	4,709,330	4,234,355	5,513,757	5,513,094
TOTAL	\$9,037,522	\$11,039,769	\$8,841,068	\$14,065,268	\$11,034,169
Capital					
Alumni	\$1,645,999	\$2,438,409	\$14,365,102	\$1,281,624	\$6,466,320
Other Individuals	242,988	1,408,232	738,854	686,157	1,513,895
Foundations & Other	4,370	420,047	314,764	5,796,155	973,300
Corporations	2,703,087	6,398,442	4,961,030	12,478,391	12,879,100
TOTAL	\$4,596,444	\$10,665,130	\$20,379,750	\$20,242,327	\$21,832,615
Total Giving					
Alumni	\$3,451,860	\$3,979,026	\$16,125,094	\$3,128,323	\$8,342,417
Other Individuals	596,429	1,885,117	1,284,480	1,274,606	2,356,081
Foundations & Other	3,310,826	4,732,984	2,615,859	11,912,518	3,776,092
Corporations	6,274,851	11,107,772	9,195,385	17,992,148	18,392,194
TOTAL	\$13,633,966	\$21,704,899	\$29,220,818	\$34,307,595	\$32,866,784

Source: *Survey of Voluntary Support of Education*, Council for Financial Aid to Education

CARNEGIE MELLON UNIVERSITY

**Finance
Additional Facts and Figures**

**Undergraduate Tuition Comparison, Top Ten Competitors
Academic Year 1987-88
Based on Application Overlap, Fall 1987 Admissions Market Study**

<u>School</u>	<u>Tuition & Fees</u>
Cornell	\$12,300
MIT	12,500
RPI	11,850
U. of Penn	11,976
Princeton	12,550
Penn State	2,996 (\$6,018 out of state)
Yale	12,120
Harvard	12,890
Stanford	11,880
Lehigh	11,400
Median	\$12,048
Carnegie Mellon	\$11,160

**Carnegie Mellon Tuition Remission
Fiscal Years 1983 to 1987
(Dollars in Thousands)**

	<u>1983</u>	<u>1984</u>	<u>1985</u>	<u>1986</u>	<u>1987</u>
Total	\$1,234	\$1,330	\$1,651	\$2,129	\$2,084

**Carnegie Mellon National Rank
Research and Development Funds
Academic Science and Engineering**

	<u>1982</u>	<u>1986</u>
Total R&D	63rd	49th
Total R&D Among Privates	22nd	17th
Federal R&D	53rd	48th
Non-Federal R&D	73rd	44th
Industry Sponsored R&D	*	3rd
Total R&D Financed Capital Expenditures	24th	18th

Source: NSF

**Value of the Endowment
Fiscal Years 1983 to 1987
(Dollars in Thousands)**

	<u>1983</u>	<u>1984</u>	<u>1985</u>	<u>1986</u>	<u>1987</u>
Book Value	\$145,816	\$153,814	\$168,449	\$197,788	\$225,014
Market Value	173,434	162,508	193,458	228,768	265,893

APPENDIX

DEFINITIONS

I. COLLEGE AND DEPARTMENT LISTING

<u>College</u>	<u>Department/Unit</u>	<u>Abbreviation</u>	<u>Notes</u>
CARNEGIE INSTITUTE OF TECHNOLOGY		CIT	Undergraduate and Graduate college.
	Biomedical Engineering	Biomedical E.	
	Chemical Engineering	Chemical E.	
	Civil Engineering	Civil E.	
	Electrical and Computer Engineering	E & C E.	
	Engineering and Public Policy	EPP	
	Manufacturing Engineering	Mfg. E.	
	Mechanical Engineering	Mechanical E.	
	Metallurgical Engineering and Materials Science	MEMS	
ADDITIONAL UNITS:			
	Nuclear Engineering	Nuclear E.	This is no longer formally a department, but a few students are still finishing or graduating from the program.
	No Major Department	No Major Dept.	Students do not declare majors until their sophomore year.
	Interdisciplinary	Interdiscp.	Interdisciplinary units are jointly taught among departments.
	Dean's Office	Dean's Ofc.	Some faculty with administrative responsibility are located in the the Dean's office.
COLLEGE OF FINE ARTS		CFA	Undergraduate and graduate college.
	Architecture		
	Art		
	Design		
	Drama		
	Music		
ADDITIONAL UNITS:			
	Interdisciplinary	Interdiscp.	Interdisciplinary units are jointly taught among departments.
	Dean's Office	Dean's Ofc.	Some faculty with administrative responsibility are located in the Dean's office.
	Pre-College Music	Pre-Col. Mus.	Year-round program for pre-college music students and CMU students who are not music majors.
COLLEGE OF HUMANITIES AND SOCIAL SCIENCES		H&SS	Undergraduate and graduate college.
	English		
	History		
	Philosophy		
	Psychology		
	Social and Decision Sciences	S & D S.	
	Statistics		
ADDITIONAL UNITS:			
	Economics		The student major Economics is housed in H&SS.
	Industrial Management in H&SS	IM - H&SS	Some freshmen and sophomores take the H&SS core before being accepted into the IM major.
	Modern Languages	Mod. Lang.	Modern Languages is a division of History, but the courses are evaluated separately.
	Student Defined Major	Student Def'd	Some students in H&SS define individualized interdisciplinary majors.

No Major Department
Dean's Office

No Major Dept.
Dean's Ofc.

Students do not declare majors until their junior year.
Some faculty with administrative responsibility are located in the the Dean's office.

University Teaching Center

Teaching Center

MELLON COLLEGE OF SCIENCE MCS

Undergraduate and graduate college.

Biological Sciences
Chemistry
Mathematics
Physics

Biology

Math

ADDITIONAL UNITS

No Major Department

No Major Dept.

Students do not declare majors until their sophomore year.

Dean's Office

Dean's Ofc.

Some faculty with administrative responsibility are located in the Dean's office.

Interdisciplinary

Interdiscp.

Interdisciplinary units are jointly taught among departments.

Industrial Management

IM

IM is an unaffiliated undergraduate major.

Economics

ECON.

Economics courses are taught primarily by faculty in GSIA, and it is evaluated as an independent department.

Computer Science

CS

Computer Science is an unaffiliated graduate department.

GRADUATE SCHOOL OF INDUSTRIAL ADMINISTRATION

GSIA

Graduate College.

Economics
Industrial Management

IM

Most Economics courses are taught by GSIA faculty.
Most IM courses are taught by GSIA faculty.

SCHOOL OF URBAN AND PUBLIC AFFAIRS

SUPA

Graduate College.

Physical Education

PHYS. ED.

Aerospace Technology/
Air Force ROTC

AERO. SCI.

Military Science/Army ROTC

MIL. SCI.

RESEARCH INSTITUTES

Information Technology Center
Mellon Institute
Robotics Institute
Software Engineering Institute
Western Pennsylvania Advanced
Technology Center

ITC
MIR
Robotics
SEI
WPATC

Administration

ADMIN

NOTE:

The category of NON-DEGREE students is often listed as a Department in tables showing student enrollment because these students are not affiliated with any Department.

II. TIME PERIODS

Fall Semester	Data are as of the Mid-Semester point in the Fall Semester (except Units, which are end of semester counts).
Academic Year	Data are the addition of Fall and Spring Semester totals.
Fiscal Year	Data are for the period July 1 to June 30 of the indicated year.

III. DEFINITIONS OF TERMS USED IN TABLES

STUDENTS

FRESHMEN

Applied	Individuals who completed the Admissions process.
Admitted	Applicants who were admitted to CMU.
Net Paid Deposit	Applicants who notified CMU of their intention to attend; all but a few actually enroll.
Yield	Net Paid Deposit as a percent of Admitted freshmen.

ENROLLMENT

Students by Level	Undergraduate	Freshman, Sophomore, Junior, Senior
	Graduate	Not differentiated by progress toward a Master's or Doctoral degree.
	Non-Degree	Special students who are not enrolled in a degree program.
Headcount	Each student, full or part time, is counted once.	
Full-Time Equivalent (FTE)	Each full-time student is counted once; part-time students are counted based on the percentage of full-time tuition paid to cover their current courses.	

REGION College Entrance Examination regional breakdown.

DEGREES

Bachelors	B.A., B.S., B.E., BFA, B.Arch.
Masters	M.A., M.S., M.E., MFA, M.Arch., M.A.M., M.A.T, M.P.M, M.S.I.A.
Doctorates	Ph.D.

All degrees are show by the Department from which they were earned, rather than the particular program or emphasis listed on the individual's degree. All degree programs are listed in the front of this booklet.

HOUSING TYPE

University Housing	On-Campus	CMU owned dormitories physically located on the campus.
	Off-Campus	CMU controlled off-campus housing.
	Fraternity/Sorority	Fraternity or Sorority controlled housing.
Non-University Housing	All other student residence arrangements.	

RETENTION

The percentage of students, enrolled in 1980, who remain at CMU or who graduate over the succeeding five years.

TEACHING

UNITS

A student at CMU earns a specified number of units for each course taken at the University. Three (3) units are the equivalent of one (1) credit hour. The number of units taught by a department is calculated by multiplying the number of students in each of the courses offered by that department by the number of units associated each course.

Other	includes units taught to Non-Degree students and students from other colleges attending CMU through the Pennsylvania Council of Higher Education (PCHE) agreement.
-------	--

FACULTY COURSE EVALUATIONS (FCE)

Faculty course evaluations are administered once a semester to students in courses designated for evaluation by the departments.

The rating scale is:	1	Poor
	2	Fair
	3	Average
	4	Good
	5	Excellent

The two questions summarized in the table are:

Overall Instructor: Overall, how would you rate this instructor's teaching?

Overall Course: What was the overall quality of this course?

FCE ratings for the Year are the combined fall and spring semester ratings weighted by responses.

FACULTY

Total Faculty includes two categories of faculty members. They are:

Regular Faculty Regular faculty are comprised of four ranks of permanent faculty members (subject to the rules of the tenure process): Professor, Associate Professor, Assistant Professor, and Instructor. Professors and some Associate Professors are tenured; the rest of the Associate Professors and Assistant Professors are eligible for tenure, or in the Tenure Stream; and Instructors are eligible for promotion into the tenure stream.

Special Faculty Special faculty encompasses several ranks of temporary, instructional faculty, including active Faculty Emeritus, Adjunct faculty, Instructional Staff, Lecturers and Visiting Faculty. Administrators with Special Faculty appointments are excluded.

Method of counting: Many Regular Faculty have joint appointments in one or more departments, and are split between these appointments accordingly. Special Faculty are counted in the department in which they have their primary appointment.

Research Faculty are excluded this year because changes in the types of research faculty were not reflected in the Personnel system.

ALUMNI

Includes all living persons who attended the university as degree candidates.

FINANCES

TUITION AND FEES

Undergraduate Tuition Tuition charged to full-time undergraduate students. This is established at the university level.

Graduate Tuition Tuition charged to full-time graduate students. This is established by each college.

Average Room The annual charge for a standard double room. Other options for university housing include: Standard and Prime rooms for one, three or four students, and several apartment, townhouse or separate house alternatives.

Average Board The annual charge for a 19 meal per week plan. Other options include 15, 10 and 5 meals per week.

UNDERGRADUATE FINANCIAL AID RESOURCES

Federal Aid	PELL SEOG	Federal entitlement grant program. Supplemental Education Opportunity Grant.
State Aid	PHEAA	Pennsylvania Higher Education Assistance Agency.
Other State Aid	Aid from states other than Pennsylvania.	
CMU E&GO	Aid provided from Carnegie Mellon Educational and General Operating Expenses.	
CMU Endowed	Aid provided from income from the Carnegie Mellon University Endowment Fund.	
CMU Gifts & Grants	Aid provided through gifts and grants to the University for this purpose.	
ROTC	Money from the Air Force, Army and Navy ROTC programs.	
Other Grant Resources	Aid from all other sources, primarily scholarships.	

EDUCATION AND GENERAL OPERATING (E&GO) INCOME, EXPENDITURES AND TRANSFERS

E&GO BUDGET The E&GO budget allocates unrestricted income in the Current Fund to support the basic educational and administrative functions of the university. Operating costs not included in the E&GO are covered primarily by restricted funds received either as direct support for sponsored research, or as gifts or grants for particular (restricted) purposes. Certain activities of the University have been "designated" as management centers, and, therefore, are not included in the E&GO. Management centers include: Auxiliary Services, Mellon Institute of Research, Summer School and Executive Education Programs, GSIA and SUPA.

INCOME

Tuition & Fees	Payments made by undergraduate, graduate and special students in accordance with University tuition and fee schedules.
Endowment Income	Unrestricted income derived from endowment investments
Current Fund Investmnts	Earnings derived from Current Fund balances.
Gifts and Grants	Gifts given to the University which are not restricted to a specific purpose by the donor.
Research Overhead	The amount charged to research sponsors to reimburse the university for the indirect costs of administering and housing research programs.
Misc. Income	Includes: interest on operating funds and reserve holding interest or University internal loans and miscellaneous charges.

EXPENDITURES

Instruction & Dept. Research	Expenditures supporting the academic programs and operations in the colleges.
Academic Support	Includes: the Libraries and Audio Visual Aids, and Computing and Info Services.
Student Services	Includes: Enrollment Planning, Athletics and Student Affairs.
UG Financial Aid	Unrestricted aid supporting undergraduates.
Administration	Expenses supporting administrative units.
Institutional Exp	Includes: insurance, legal and investment agent fees.
Oper. & Maint. of Plant	Operation and maintenance of physical plant.
Utilities and Steam	Expenditures for utilities and steam.
Total Transfers	Includes: transfers to capital, debt service, management centers, college reserves.

RESEARCH COSTS

In the listing by College and Research Center,

Other includes:

Hunt Institute for Botanical Documentation, Center for the Design of Educational Computing, Carnegie Mellon Action Program, Upward Bound, Office of the Provost, Office of the Senior Vice President for Academic Affairs, Pittsburgh Supercomputing Center, the Center for the Study of Materials, the International Center for Machine Translation, the NMR Center of Biomedical Research and General Institutional.

VOLUNTARY SUPPORT

Voluntary Support

Contributions supporting the University, excluding: income from endowment and other invested funds, and support from federal, state and local governments and their agencies.

TUITION REMISSION

This shows money paid to CMU faculty, staff and their dependents to take courses at CMU or other universities.