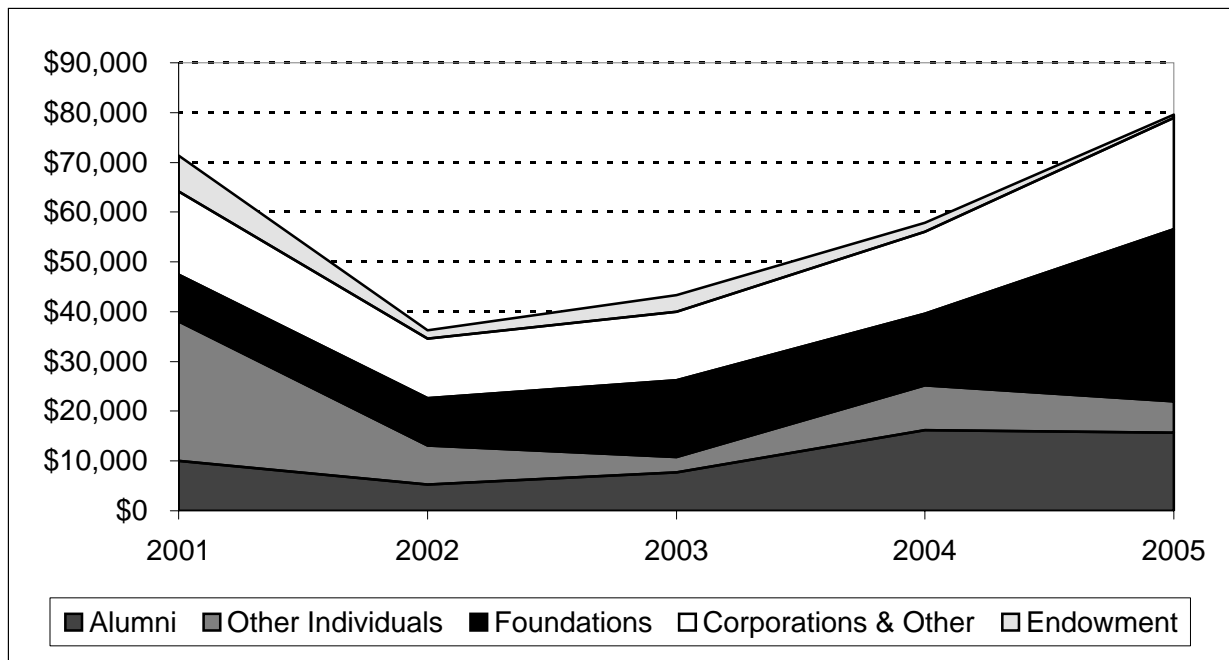


## **FINANCES**



**TOTAL GIVING BY SOURCE**  
**NOMINAL DOLLARS**  
**FISCAL YEARS 2001 to 2005**



**VOLUNTARY SUPPORT**  
**BY SOURCE & PURPOSE**  
**FISCAL YEARS 2001 to 2005**  
**(Dollars in Thousands)**

	2001	2002	2003	2004	2005
<b>Current Operations</b>					
Alumni	\$4,571	\$3,394	\$4,427	\$6,800	\$4,679
Other Individuals	\$2,432	\$2,746	\$1,456	\$3,428	\$1,714
Foundations	\$5,838	\$8,428	\$14,205	\$11,045	\$13,167
Corporations & Other	\$10,028	\$8,217	\$9,118	\$8,873	\$10,560
<b>Total</b>	<b>\$22,869</b>	<b>\$22,784</b>	<b>\$29,205</b>	<b>\$30,145</b>	<b>\$30,121</b>
<b>Capital</b>					
Alumni	\$5,481	\$1,899	\$3,242	\$9,381	\$10,952
Other Individuals	\$25,511	\$5,131	\$1,665	\$5,626	\$4,680
Foundations	\$3,611	\$1,068	\$1,233	\$3,265	\$21,330
Corporations & Other	\$6,689	\$3,696	\$4,611	\$7,695	\$11,904
<b>Total</b>	<b>\$41,292</b>	<b>\$11,794</b>	<b>\$10,752</b>	<b>\$25,966</b>	<b>\$48,866</b>
<b>Total Giving</b>					
Alumni	\$10,051	\$5,293	\$7,669	\$16,181	\$15,631
Other Individuals	\$27,943	\$7,877	\$3,121	\$9,054	\$6,394
Foundations	\$9,449	\$9,496	\$15,438	\$14,309	\$34,497
Corporations & Other	\$16,717	\$11,913	\$13,728	\$16,568	\$22,464
Endowment	\$7,232	\$1,715	\$3,421	\$1,777	\$655
<b>Total</b>	<b>\$71,392</b>	<b>\$36,294</b>	<b>\$43,378</b>	<b>\$57,889</b>	<b>\$79,641</b>

**UNDERGRADUATE AND GRADUATE COSTS OF ATTENDANCE**  
**ACADEMIC YEARS 1996-1997 to 2005-2006**

**UNDERGRADUATE TUITION, FEES, ROOM AND BOARD <sup>1</sup>**

Academic Year	Tuition	Fees	Room	Board	Tuition, Fees, Room & Board
1996-97	\$19,400	\$100	\$3,740	\$2,300	\$25,540
1997-98	\$20,275	\$100	\$3,845	\$2,440	\$26,660
1998-99	\$21,275	\$130	\$3,965	\$2,590	\$27,960
1999-00	\$22,100	\$200	\$4,105	\$2,705	\$29,110
2000-01	\$24,600	\$192	\$4,228	\$2,800	\$31,820
2001-02	\$25,670	\$202	\$4,354	\$3,220	\$33,446
2002-03	\$26,910	\$206	\$4,524	\$3,320	\$34,960
2003-04	\$29,190	\$220	\$4,705	\$3,450	\$37,565
2004-05	\$30,650	\$386	\$4,964	\$3,590	\$39,590
2005-06	\$31,650	\$394	\$5,182	\$3,734	\$40,960

1. Costs for entering students.

**TOTAL ESTIMATED COST OF ATTENDING CARNEGIE MELLON - RESIDENT UNDERGRADUATE <sup>2</sup>**

Academic Year	Tuition & Fees	Room & Board	Books & Supplies	Other	Total
1996-97	\$19,500	\$6,040	\$800	\$1,150	\$27,490
1997-98	\$20,375	\$6,285	\$820	\$1,150	\$28,630
1998-99	\$21,405	\$6,555	\$820	\$1,150	\$29,930
1999-00	\$22,300	\$6,810	\$835	\$1,175	\$31,120
2000-01	\$24,792	\$7,028	\$850	\$1,200	\$33,870
2001-02	\$25,872	\$7,574	\$865	\$1,235	\$35,546
2002-03	\$27,116	\$7,844	\$880	\$1,250	\$37,090
2003-04	\$29,410	\$8,155	\$895	\$1,265	\$39,725
2004-05	\$31,036	\$8,554	\$910	\$1,280	\$41,780
2005-06	\$32,044	\$8,916	\$925	\$1,295	\$43,180

2. Costs for entering students residing on campus.

**GRADUATE TUITION <sup>3</sup>**

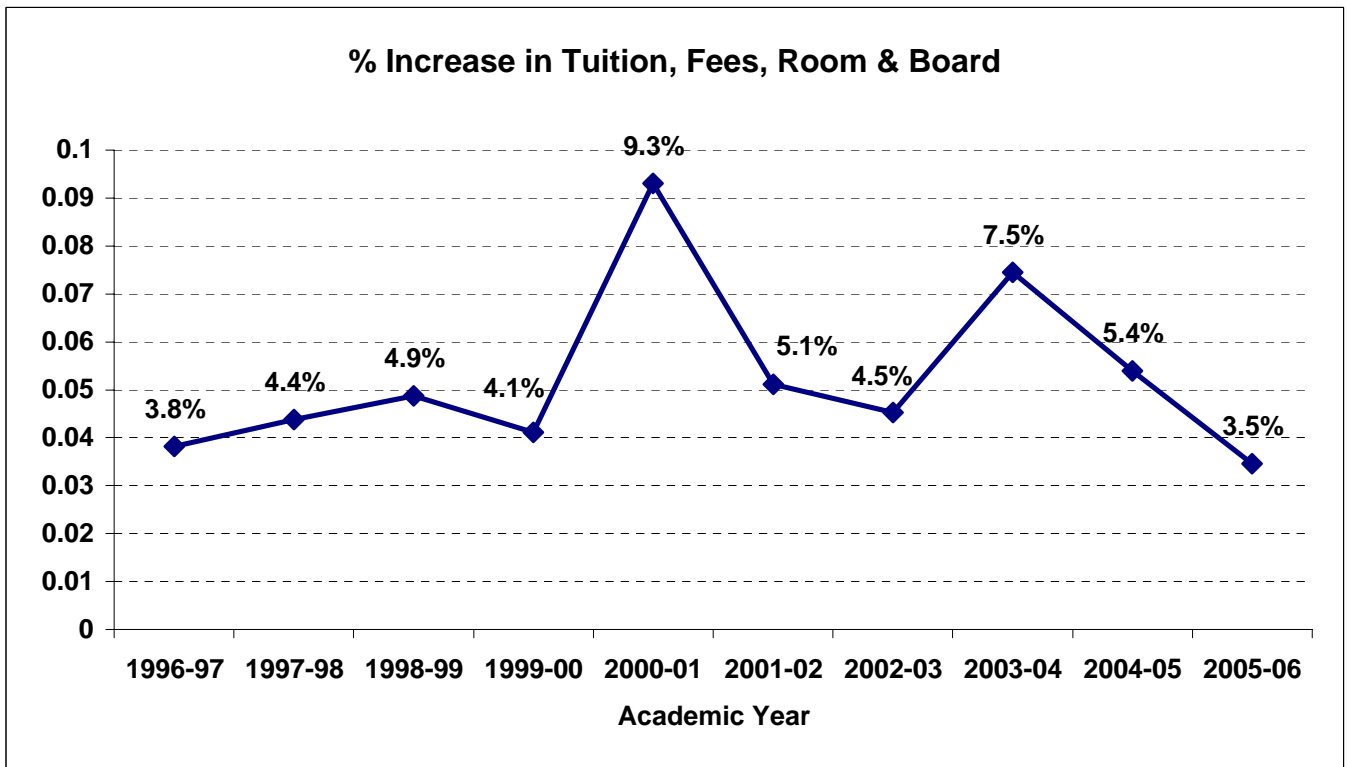
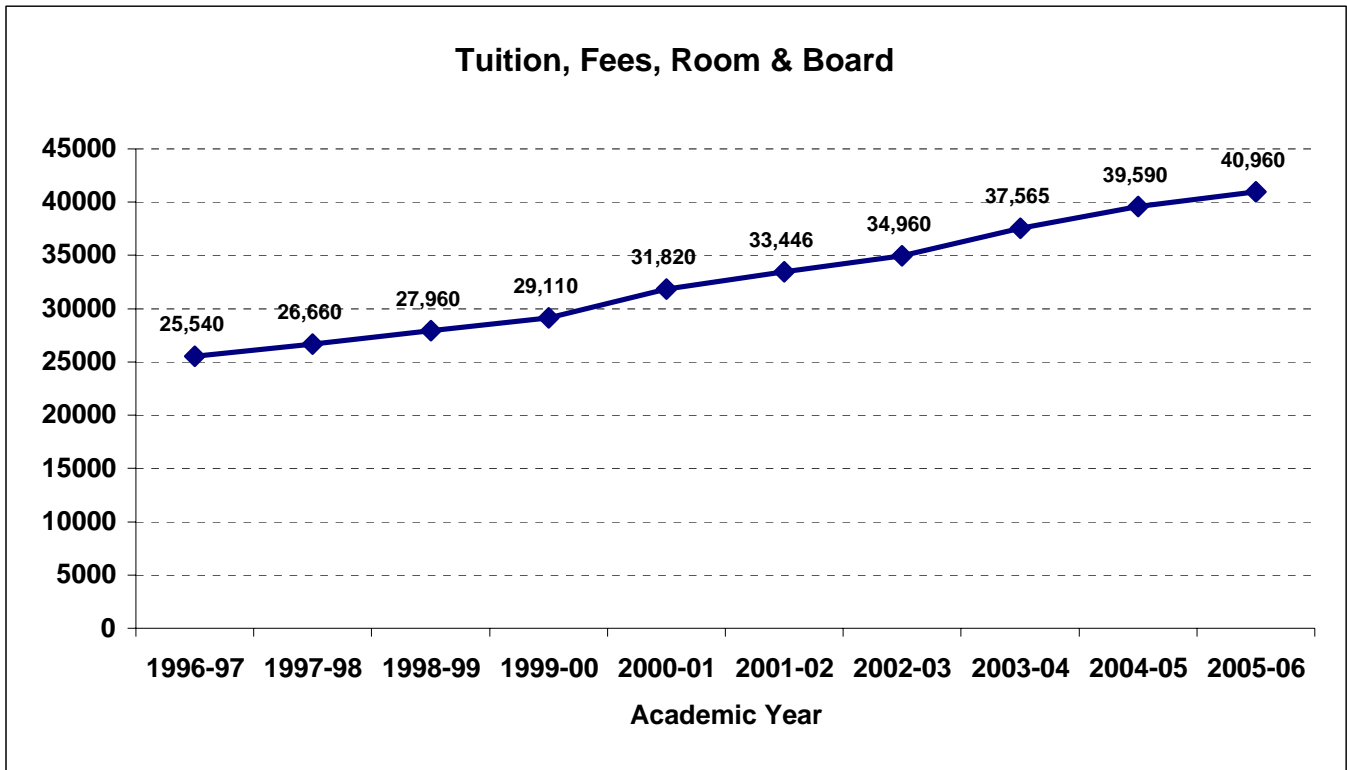
Academic Year	CFA	CIT	HEINZ	H&SS	INI <sup>4</sup>	MCS	SCS	TEPPER	WEST COAST <sup>5</sup>
1996-97	\$19,400	\$19,400	\$19,400	\$19,400	\$37,700	\$19,400	\$19,400	\$22,100	--
1997-98	\$20,275	\$20,275	\$20,275	\$20,275	\$37,700	\$20,275	\$20,275	\$23,000	--
1998-99	\$21,275	\$21,275	\$21,275	\$21,275	\$37,700	\$21,275	\$21,275	\$24,000	--
1999-00	\$22,100	\$22,100	\$22,100	\$22,100	\$39,500	\$22,100	\$22,100	\$25,000	--
2000-01	\$23,300	\$23,300	\$23,300	\$23,300	\$41,000	\$23,300	\$23,300	\$26,750	--
2001-02	\$24,760	\$24,760	\$24,760	\$24,760	\$43,600	\$24,760	\$24,760	\$28,250	--
2002-03	\$26,380	\$26,380	\$26,380	\$26,380	\$53,000	\$26,380	\$26,380	\$29,750	\$42,500
2003-04	\$28,200	\$28,200	\$28,200	\$28,200	\$56,000	\$28,200	\$28,200	\$35,000	\$43,775
2004-05	\$28,200	\$28,200	\$29,900	\$28,200	\$59,000	\$28,200	\$28,200	\$37,000	\$43,775
2005-06	\$30,000	\$30,000	\$31,600	\$30,000	\$60,000	\$30,000	\$30,000	\$38,800	\$46,000

3. Graduate tuition displayed is for the majority of programs within each college, however tuition may vary by program.

4. Tuition is for a 16-month program.

5. Full-time tuition covers three semesters.

**UNDERGRADUATE TUITION, FEES, ROOM & BOARD<sup>1</sup>**  
**ACADEMIC YEARS 1996-1997 to 2005-2006**



1. Costs for students entering that academic year and living on campus.

## OPERATING REVENUES & EXPENDITURES

FISCAL YEARS 2001 to 2005

(Dollars in Thousands)

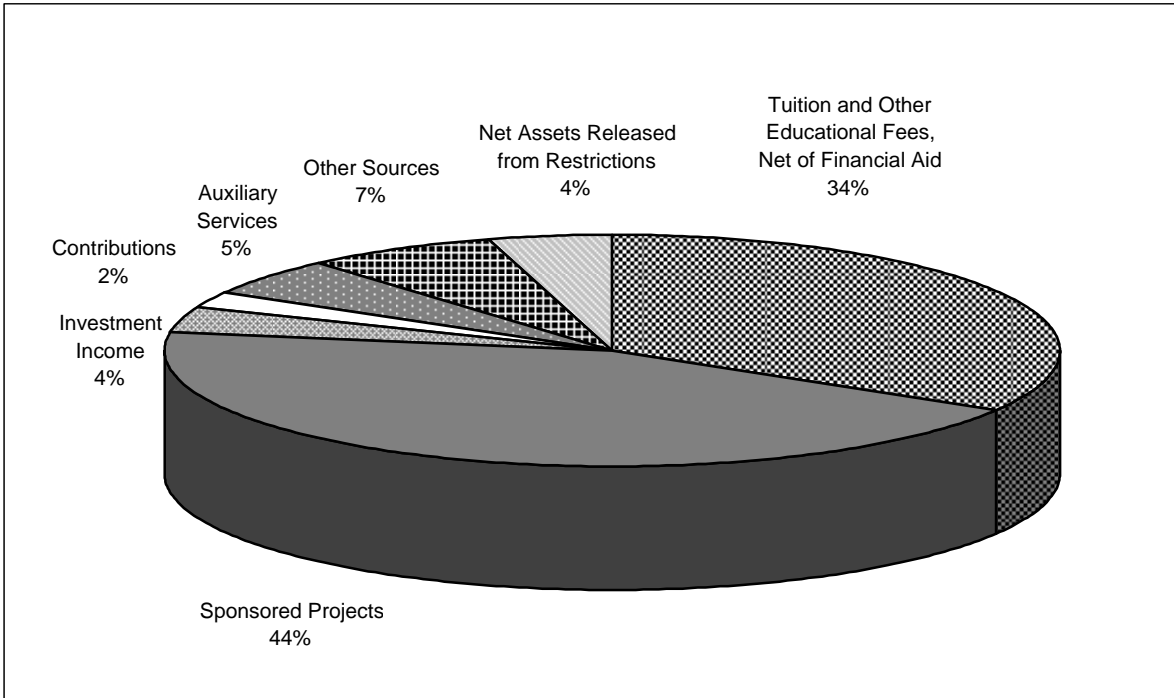
	2001	2002	2003	2004	2005
<b>Operating Revenue and Support (Unrestricted):</b>					
Tuition and Other Educational Fees, Net of Financial Aid	\$165,694	\$177,299	\$196,153	\$217,214	\$227,841
Sponsored Projects	188,086	246,107	243,871	\$278,900	\$295,722
Investment Income	34,947	32,890	31,306	\$25,057	\$25,809
Contributions	11,009	10,520	9,149	\$10,782	\$13,227
Auxiliary Services	29,031	31,423	32,950	\$35,280	\$36,371
Other Sources	26,083	24,470	25,689	\$34,294	\$47,404
Net Assets Released from Restrictions	29,653	30,723	37,875	\$30,183	\$29,867
<b>TOTAL OPERATING REVENUES AND SUPPORT</b>	<b>\$484,503</b>	<b>\$553,432</b>	<b>\$576,993</b>	<b>\$631,710</b>	<b>\$676,241</b>

	2001	2002	2003	2004	2005
<b>Operating Expenses:</b>					
Salaries	\$254,499	\$273,808	\$296,635	\$325,578	\$347,716
Benefits	47,975	51,525	55,233	\$66,643	\$73,096
Supplies and Services	82,102	120,461	99,010	\$116,167	\$132,077
Occupancy and Related Expenses	35,188	34,957	35,994	\$36,812	\$40,011
Other Operating Expenses	11,222	23,309	28,247	\$29,500	\$30,989
Depreciation and Amortization	41,820	41,539	38,819	\$40,200	\$42,665
Interest Expense	10,175	5,407	5,817	\$5,176	\$8,205
<b>TOTAL OPERATING EXPENSES</b>	<b>\$482,981</b>	<b>\$551,006</b>	<b>\$559,755</b>	<b>\$620,076</b>	<b>\$674,759</b>

## DISTRIBUTION OF OPERATING REVENUE

FISCAL YEAR 2005

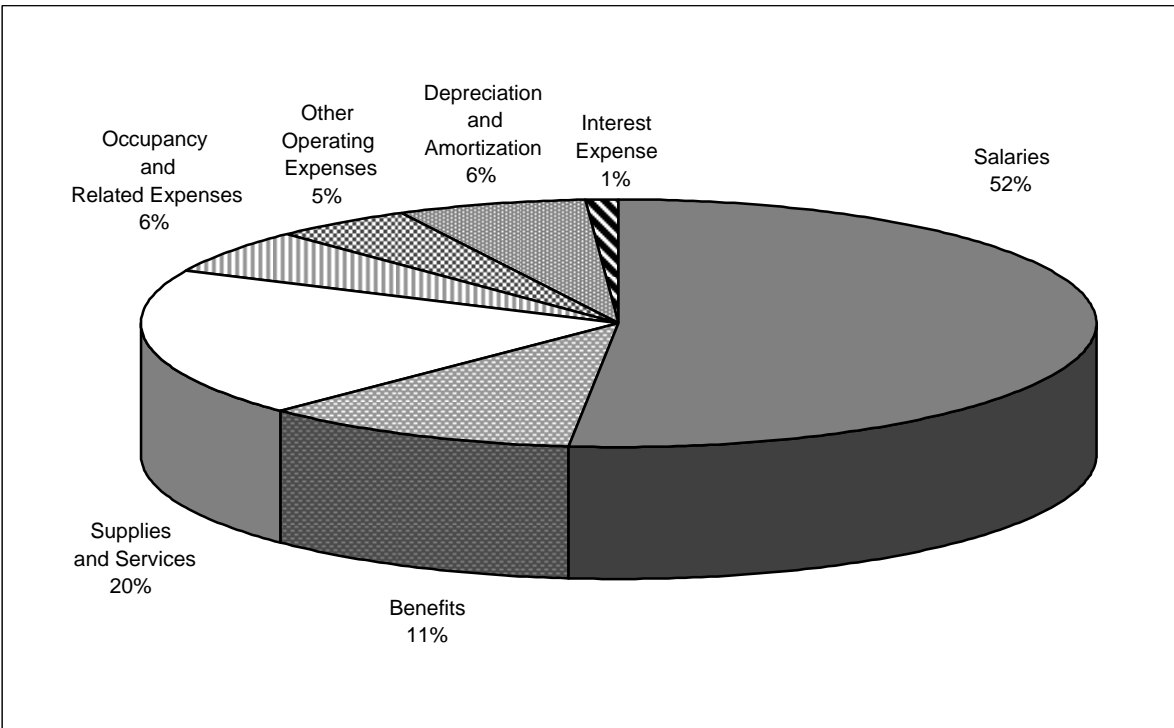
Total = \$676,241



## DISTRIBUTION OF OPERATING EXPENSES

FISCAL YEAR 2005

Total = \$674,759

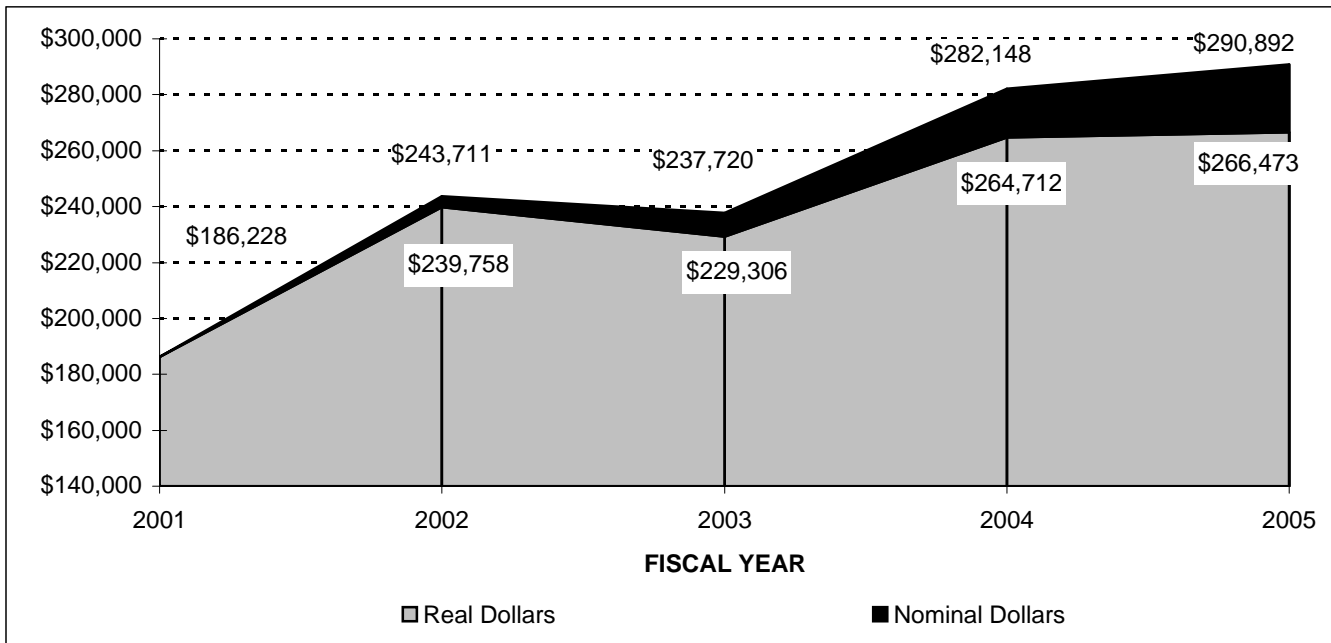


**TOTAL SPONSORED RESEARCH COSTS  
BY COLLEGE & RESEARCH CENTER  
FISCAL YEARS 2001 to 2005**  
(Dollars in Thousands)

<b>Direct Costs</b>	<b>2001</b>	<b>2002</b>	<b>2003</b>	<b>2004</b>	<b>2005</b>
CIT	\$29,464	\$36,391	\$39,534	\$41,567	\$43,103
CFA	1,105	1,877	1,791	1,518	2,297
Heinz	3,481	4,607	4,489	5,797	4,457
H&SS	8,697	10,399	14,028	13,096	13,510
MCS	25,175	56,374	30,093	38,928	32,560
SCS	37,390	47,886	56,664	65,746	70,759
Tepper	1,419	1,696	2,233	2,814	2,359
CMRI	6,809	(498)	73	(10)	(67)
SEI	37,730	42,675	41,942	54,734	60,455
CMU West	--	902	3,694	4,803	4,082
CyLab	--	--	--	720	5,562
Other	1,392	3,100	2,216	6,753	4,014
<b>TOTAL</b>	<b>\$152,662</b>	<b>\$205,409</b>	<b>\$196,758</b>	<b>\$236,466</b>	<b>\$243,091</b>
<b>Indirect Costs</b>					
CIT	\$7,993	\$9,523	\$9,896	\$10,993	\$9,929
CFA	157	293	374	294	361
Heinz	633	732	590	762	690
H&SS	2,402	3,183	3,586	3,704	3,440
MCS	5,693	6,528	6,567	7,437	7,634
SCS	10,786	14,017	15,312	17,268	19,002
Tepper	490	517	495	797	773
CMRI	3,033	(250)	32	(6)	(32)
SEI	2,194	2,767	2,909	2,315	2,745
CMU West	--	256	693	1,272	955
CyLab	--	--	--	57	1,595
Other	185	736	508	789	709
<b>TOTAL</b>	<b>\$33,566</b>	<b>\$38,302</b>	<b>\$40,962</b>	<b>\$45,682</b>	<b>\$47,801</b>
<b>Total Sponsored Research Costs</b>					
CIT	\$37,457	\$45,914	\$49,430	\$52,560	\$53,032
CFA	1,262	2,170	2,165	1,812	2,658
Heinz	4,114	5,339	5,079	6,559	5,147
H&SS	11,099	13,582	17,614	16,800	16,950
MCS	30,868	62,902	36,660	46,365	40,194
SCS	48,176	61,903	71,976	83,014	89,761
Tepper	1,909	2,213	2,728	3,611	3,132
CMRI	9,842	(748) <sup>1</sup>	105	(16)	(99)
SEI	39,924	45,442	44,851	57,049	63,200
CMU West	--	1,158	4,387	6,075	5,037
CyLab	--	--	--	777	7,157
Other	1,577	3,836 <sup>1</sup>	2,724	7,542	4,723
<b>TOTAL</b>	<b>\$186,228</b>	<b>\$243,711</b>	<b>\$237,720</b>	<b>\$282,148</b>	<b>\$290,892</b>

1. A portion of the increase in research volume in 'Other' is due to CMRI reorganization.

**SPONSORED RESEARCH COSTS  
REAL VERSUS NOMINAL GROWTH  
FISCAL YEARS 2001 to 2005**



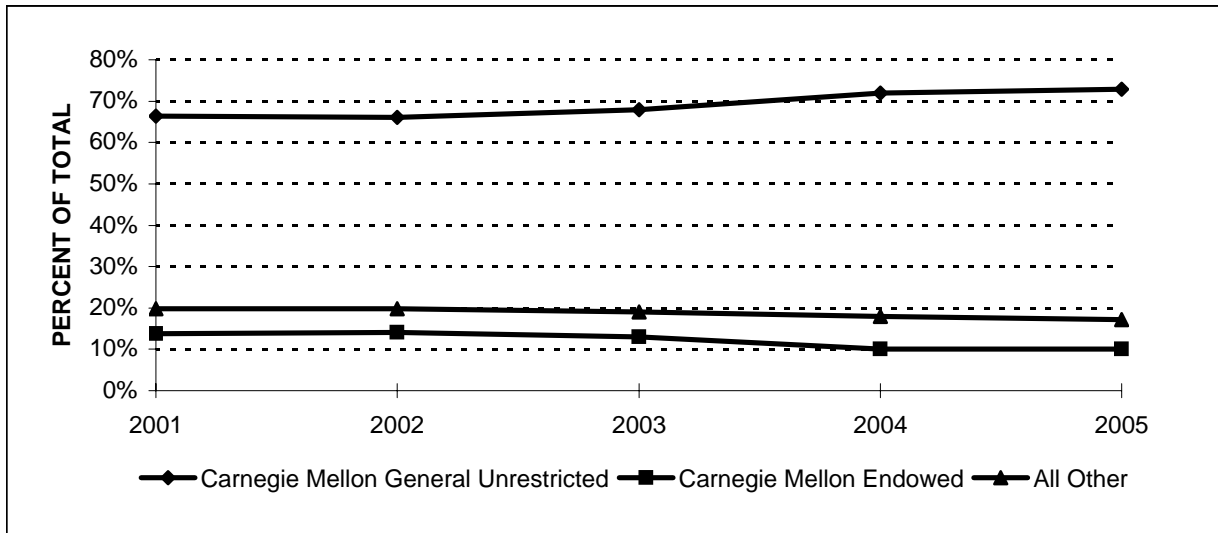
Real dollars calculated using the 2nd quarter implicit price deflator with 2001 as the base year.

**TOTAL SPONSORED RESEARCH COSTS BY AGENCY  
FISCAL YEARS 2001 to 2005  
(Dollars in Thousands)**

	2001	2002	2003	2004	2005
<b>Federal</b>					
Defense	\$65,087	\$71,649	\$61,411	\$59,397	\$64,494
National Science Foundation	38,299	73,838	53,045	68,060	70,933
Health & Human Services	10,645	13,673	20,839	22,763	23,318
Energy	3,924	5,648	8,634	7,981	6,835
Other Federal	12,728	15,013	17,877	26,629	26,060
<b>TOTAL</b>	<b>\$130,683</b>	<b>\$179,821</b>	<b>\$161,806</b>	<b>\$184,830</b>	<b>\$191,640</b>
<b>Non-Federal</b>					
Industrial	\$23,569	\$28,889	\$14,246	\$19,400	\$17,833
Other Non-Federal	31,976	35,001	16,817	20,869	18,219
<b>TOTAL</b>	<b>\$55,545</b>	<b>\$63,890</b>	<b>\$31,063</b>	<b>\$40,269</b>	<b>\$36,052</b>
<b>Software Engineering Institute<sup>1</sup></b>	--	--	\$44,851	\$57,049	\$63,200
<b>TOTAL</b>	<b>\$186,228</b>	<b>\$243,711</b>	<b>\$237,720</b>	<b>\$282,148</b>	<b>\$290,892</b>

1. Beginning in FY03, Software Engineering Institute costs are no longer broken down by agency.

**UNDERGRADUATE SCHOLARSHIPS  
BY SOURCE, PERCENT OF TOTAL  
FISCAL YEARS 2001 to 2005**



\*All other includes Federal, State and Other Grant Resources

**UNDERGRADUATE FINANCIAL AID RESOURCES  
BY SOURCE  
FISCAL YEARS 2001 to 2005  
(Dollars in Thousands)**

	2001	2002	2003	2004	2005
<b>Scholarships &amp; Grants</b>					
Federal - PELL	\$1,231	\$1,501	\$1,794	\$1,844	\$1,920
Federal - SEOG	1,966	1,980	1,984	1,963	1,967
State - PHEAA	1,038	1,003	1,009	1,015	868
Other State Grants	118	84	69	43	47
Carnegie Mellon General Unrestricted	26,245	27,412	30,837	36,323	38,172
Carnegie Mellon Endowed	5,474	5,808	5,929	5,142	5,271
Carnegie Mellon Gifts & Grants	288	301	245	300	299
ROTC	849	923	1,254	1,576	1,327
Other Grant Resources	2,326	2,450	2,305	2,129	2,559
<b>TOTAL</b>	<b>\$39,535</b>	<b>\$41,462</b>	<b>\$45,426</b>	<b>\$50,335</b>	<b>\$52,430</b>
<b>Self-Help</b>					
Workstudy	\$1,893	\$2,184	\$2,284	\$2,022	\$2,026
Loans	11,351	14,922	17,809	19,720	18,638
<b>TOTAL</b>	<b>\$13,244</b>	<b>\$17,106</b>	<b>\$20,093</b>	<b>\$21,742</b>	<b>\$20,664</b>
<b>TOTAL</b>	<b>\$52,779</b>	<b>\$58,568</b>	<b>\$65,519</b>	<b>\$72,077</b>	<b>\$73,094</b>
<b>% of Undergraduates with Need</b>	51%	49%	50%	51%	52%

**ENDOWMENT STATISTICS**  
**FISCAL YEARS 2001 to 2005**

	<b>2001</b>	<b>2002</b>	<b>2003</b>	<b>2004</b>	<b>2005</b>
Market Value	\$756,930,000	\$667,807,000	\$654,678,000	\$768,990,000	\$837,459,000
Rank(N=741) <sup>1</sup>	63	65	67	66	***
Endowment/FTE Student	\$95,295	\$84,075	\$75,363	\$86,984	\$94,163
Rank (N=514) <sup>2</sup>	116	114	132	132	***
Life Income Funds	\$29,437,000	\$27,043,000	\$26,694,000	\$27,793,000	\$27,632,000

1. Carnegie Mellon's rank out of public & private institutions

2. Carnegie Mellon's rank out of private institutions

\*\*\*Ranks not available until publication of FY2005 NACUBO Endowment Reports in spring 2006.

Source: NACUBO Endowment Reports and Carnegie Mellon Annual Reports

