

QUICK REFERENCE

Wean Hall 5202

CONNECTING

WIRED

1. Connect the **HDMI cable** to your device.
2. Tap **Laptop** on the touch panel.



HDMI Cable

PRESENTING

DISPLAY ONE DEVICE

1. Tap the touch panel to wake the system.
2. Under **Devices**, tap the device that you want to display.

PREVIEW DEVICE ON TOUCH PANEL

1. Under Actions, select **Video Preview**.
2. Tap **Desktop** to preview on the touch panel.
3. Tap the **arrow** to return to the touch panel menu.

DISPLAY MULTIPLE DEVICES

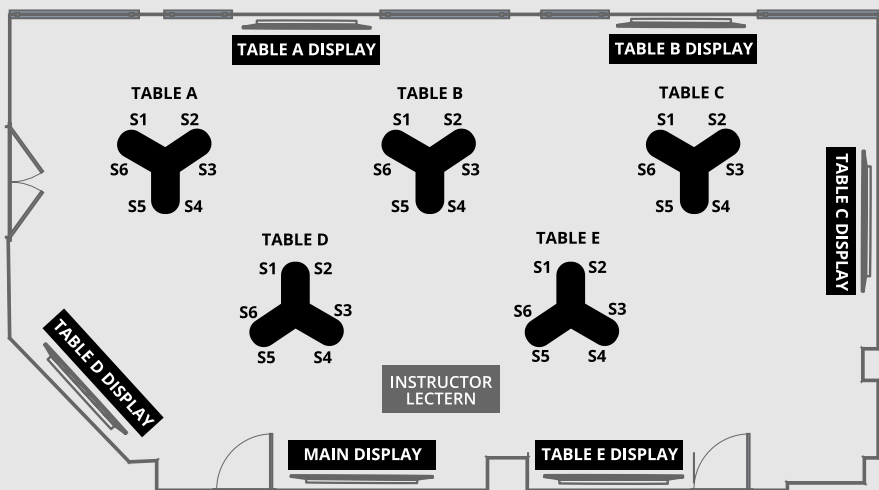
1. Under **Display Controls**, tap **All-**, **Presenter-** or **Stations-** to set the display location for an additional device.
2. Under **Device**, tap the additional device to display.
3. (Optional) Under Display Controls, tap **Blank Screen/Unblank Screen** to toggle on/off room screens in the corresponding location.

USE HYBRID TEACHING TECHNOLOGY

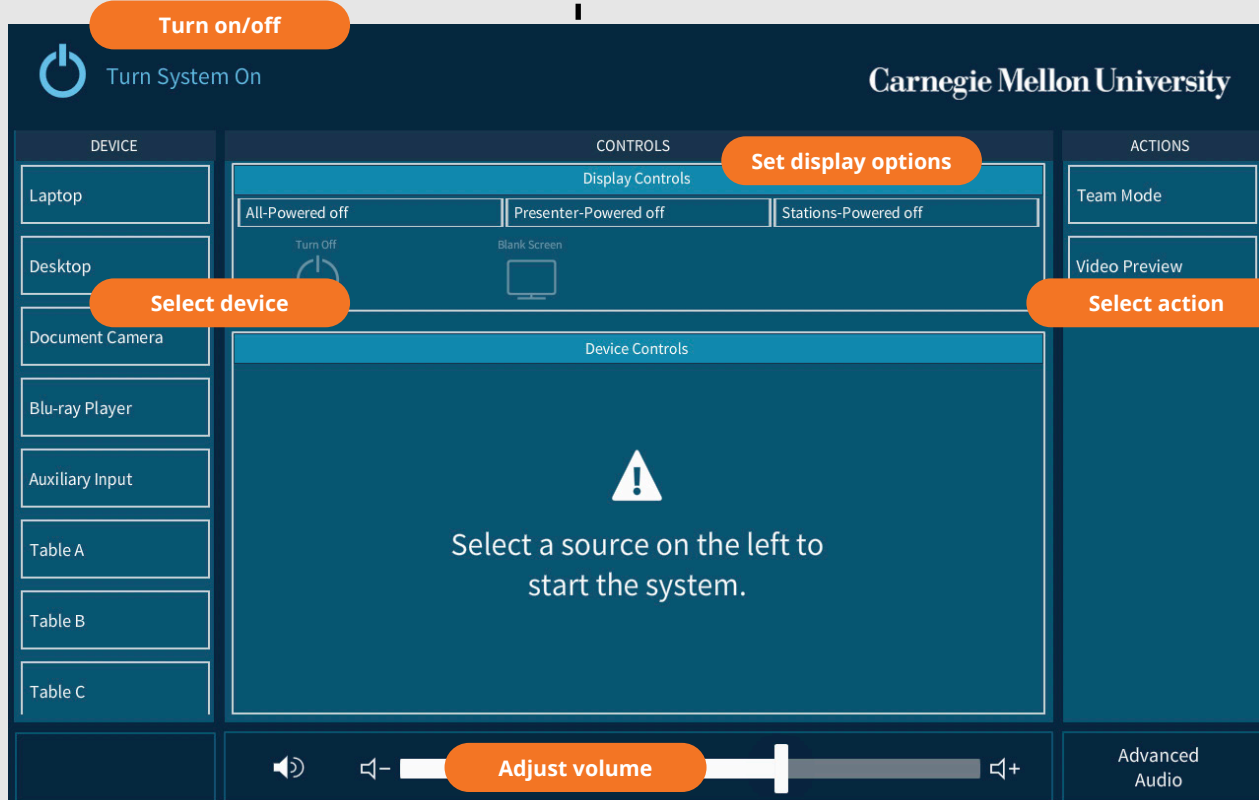
1. Tap **Desktop** on the touch panel.
2. Log into the Desktop computer using your **Andrew** credentials and open the **Zoom App**.
3. **Start or join** a Zoom meeting.
4. Use the Zoom app to:
 - Change the audio and video settings for the conference camera and microphone.
 - Share your screen.

USE TEAM STATIONS

1. Under **Device**, tap a **Table**, then tap the **Seat** whose screen you want to display. Repeat for each **Table**.
2. To display your selections on the screens, tap **Team Mode**.
3. To change which screens are displayed, exit Team Mode by tapping the **Home**, then repeat steps 1-2.



Tap to start



See the complete Hybrid Teaching Technology guide.