

Using FUGU SFTP

This document contains the following sections:

- [Introduction](#)
- [Transferring Files](#)
- [Favorites: Creating and Editing](#)

For information related to this topic refer to:

- [Fetch \(http://www.cmu.edu/computingdoc/software/fetch/index.html\)](http://www.cmu.edu/computingdoc/software/fetch/index.html)
- [Terminal \(http://www.cmu.edu/computingdoc/software/terminal/index.html\)](http://www.cmu.edu/computingdoc/software/terminal/index.html)

Note: This application offers an extensive online help file. Refer to the online help for detailed instructions on using the program. For more information, visit the [University of Michigan, Research Systems Unix Group \(http://rsug.itd.umich.edu/index.html\)](http://rsug.itd.umich.edu/index.html) web site.

Copyright © 2005 Regents of The University of Michigan.

All Rights Reserved.

Permission to use, copy, modify, and distribute this software and its documentation for any purpose and without fee is hereby granted, provided that the above copyright notice appears in all copies and that both that copyright notice and this permission notice appear in supporting documentation, and that the name of The University of Michigan not be used in advertising or publicity pertaining to distribution of the software without specific, written prior permission. This software is supplied as is without expressed or implied warranties of any kind.

Introduction

Fugu SFTP is a secure file transfer program for Mac OS X operating systems. It is used to transfer files from your local machine to a remote machine or server and securely transfers FTP protocol connections. Its graphic interface allows drag-and-drop functionality for copying files from one drive to another, control-clicking on an item to generate a menu of options, and clicking on a selected item to edit the item's label.

Please Note: The sftp protocol makes a terminal connection to the remote server to perform the file transfer. Therefore, any unexpected output from your default shell or login scripts may cause sftp to exit with errors. If you experience trouble connecting with sftp, examine your .login and/or .cshrc files, or send an email to [Advisor \(mailto:advisor@andrew.cmu.edu\)](mailto:advisor@andrew.cmu.edu) including the error messages you received and the contents of your .login and .cshrc files.

SFTP will work to any standard Andrew UNIX host, including the unix.andrew pool of machines. However, some other machines, (such as publishing.andrew.cmu.edu used for publishing web collections to www.cmu.edu) do not have SFTP enabled at this time.

Note: Computing Services **does not** support tunneled connections through SSH Secure Shell.

Before you begin

If you do not have the Fugu SFTP client for Mac, you can download a copy from the Computing Services [Software \(http://www.cmu.edu/computingsoftware/all/fugu/index.html\)](http://www.cmu.edu/computingsoftware/all/fugu/index.html) page. Follow the instructions provided to download and install SSH for your operating system.

Note: If you are installing Fugu onto a new machine running Snow Leopard (OS X 10.6), you may be prompted with a dialog box stating, "To open Fugu, you need to install Rosetta." Rosetta is a translation software allowing PowerMac software to run on Intel Macs and is an optional install for 10.6. Clicking **Install** will install Rosetta and allow the Fugu installation to continue. Snow Leopard (OS X 10.6) is not fully supported by Computing Services at this time. Visit the [Snow Leopard \(OS X 10.6\) status page \(http://www.cmu.edu/computingnews/status/snowleopard.html\)](http://www.cmu.edu/computingnews/status/snowleopard.html) for details.

Last Updated: 11/10/09

Transfer Files Using Fugu SFTP

Fugu SFTP is designed so you can quickly connect to a remote server by entering the name of the server or its Internet address in the Hostname field on the Fugu Open Connection window. The Open Connection window displays two subwindows: your local drive and the remote FTP directory that you entered. Files and directories can be dragged from one subwindow and dropped on a target directory in the other subwindow. As you drop the contents from one location to the other, the standard FTP transfer operation is performed.

Follow these steps to use Fugu SFTP on a Mac OS X machine.

1.



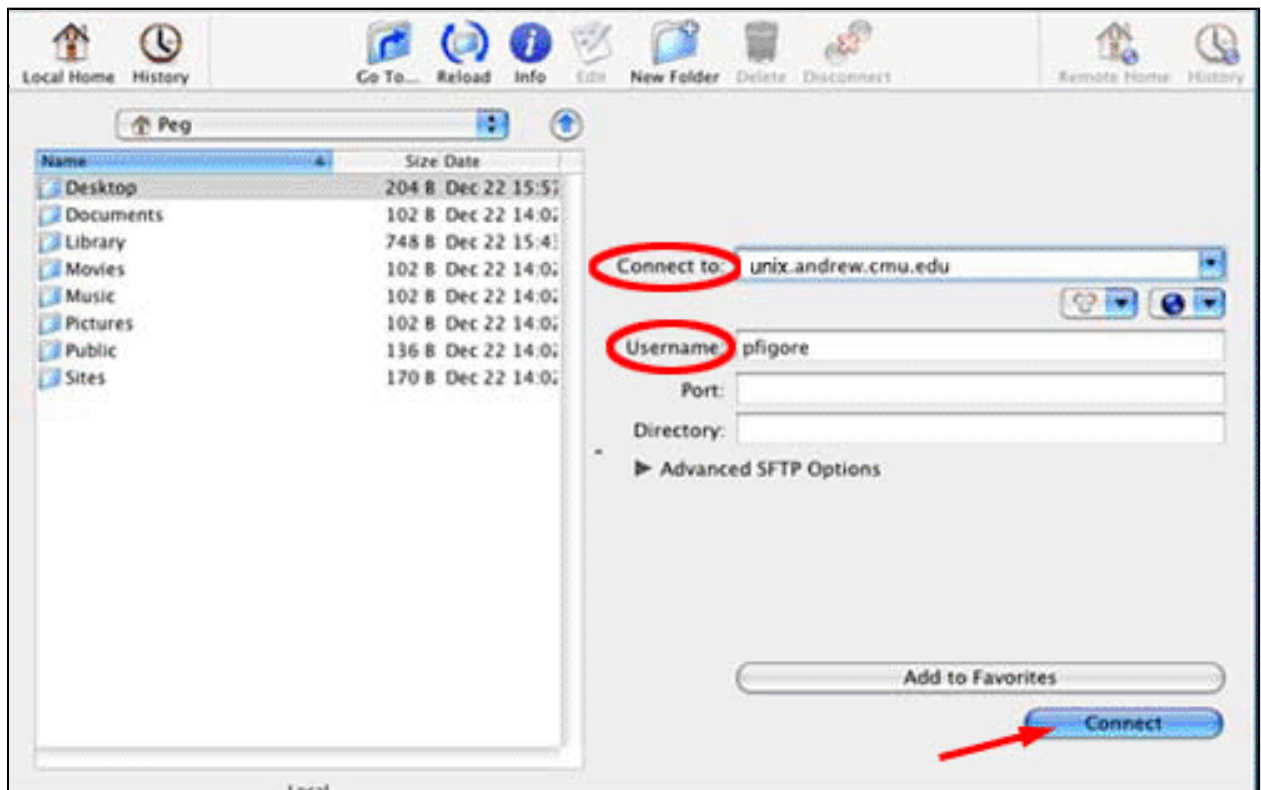
Launch the Fugu SFTP program.

The SFTP Transfer window is displayed .

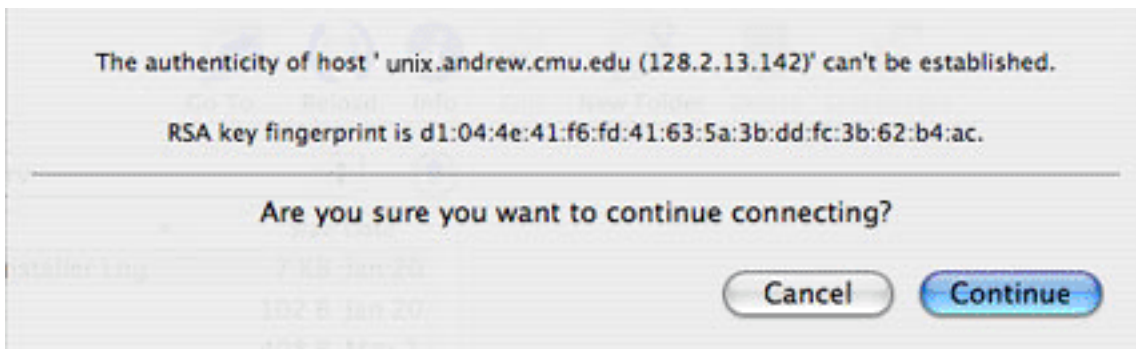
2. Complete the fields as follows and then click **Connect**.

Connect to: Enter the name of the remote server you want to access.

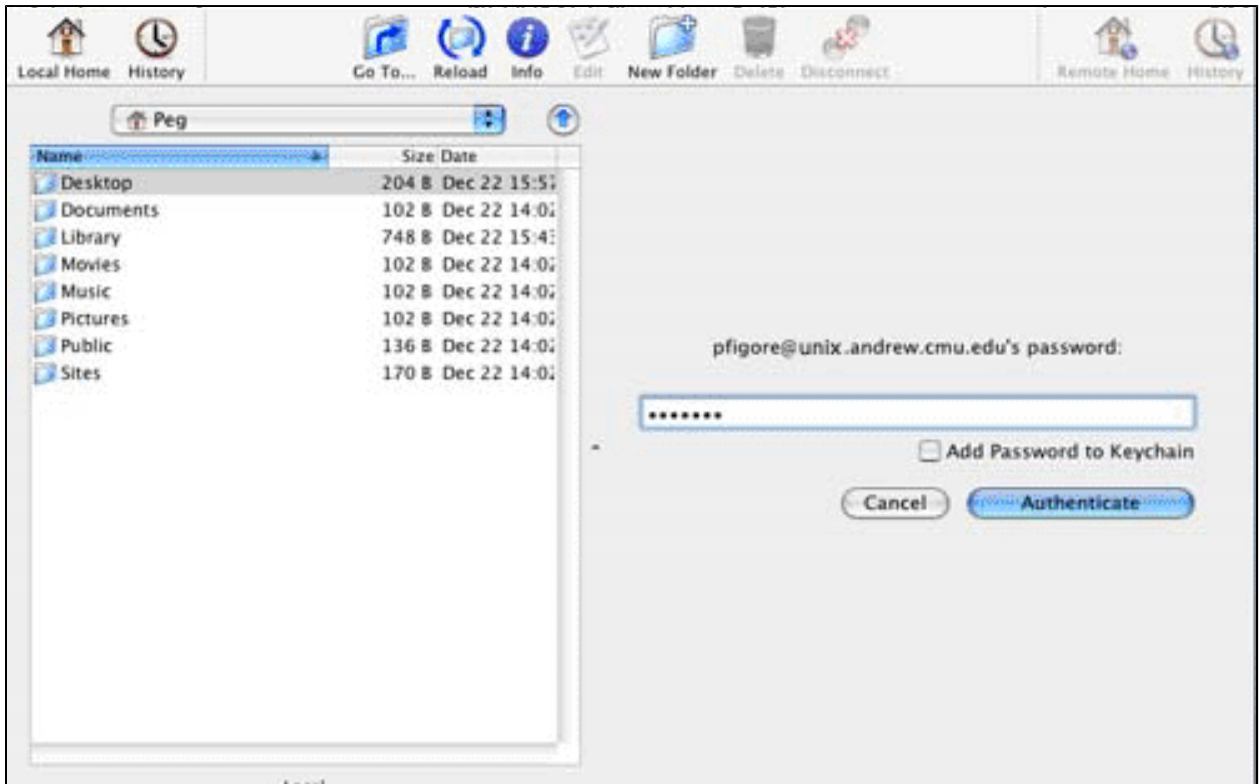
Username: Enter your Andrew user ID.



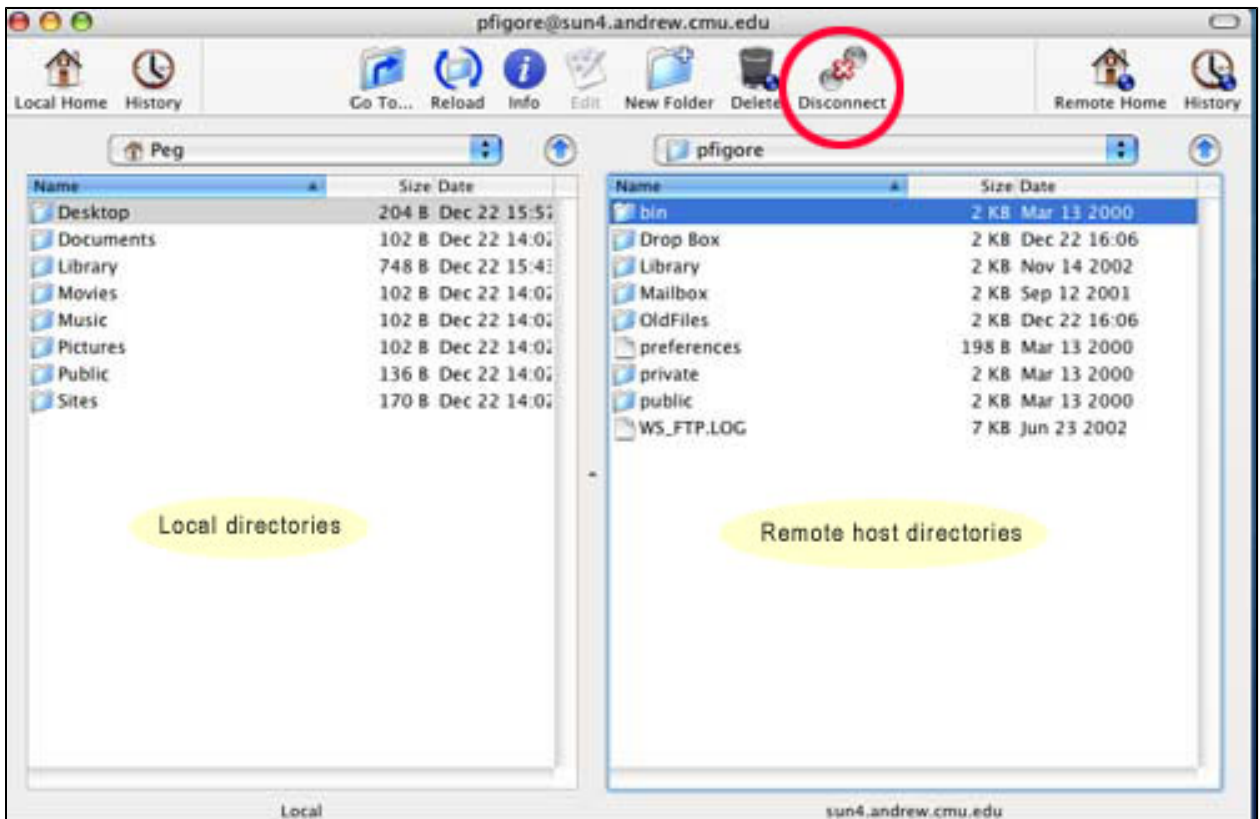
Note: If you are connecting to a new Host Name, the following Host Authenticity dialog box is displayed. Click **Continue** to save the host key to the local database and dismiss the message box.



3. A password prompt is displayed on the window. Enter your Andrew password and click **Authenticate**.



4. The SFTP window is displayed with the local and remote host directories displayed. Select the file(s) to be transferred by clicking and dragging each one to the new location.
Note: As the transfer is being completed a message is briefly displayed following the uploading or downloading in progress.



5. Once all files are transferred, you can end the session by clicking on **Disconnect**.
6. To log out of the program, select **Fugu > Quit Fugu**.

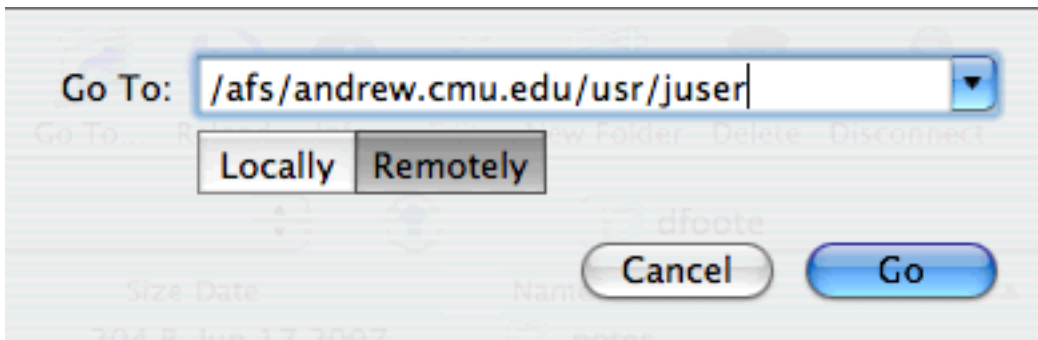
Transfer Files from Another User's AFS Space

To transfer files from another user's home directory (AFS space) on unix.andrew.cmu.edu:

1. Select the **Go To...** button.



2. The Go To: window appears.
3. Enter the path to the person's home directory `/afs/andrew.cmu.edu/usr/AndrewID`, select **Remotely** and click **Go**.



4. Follow the [Transfer Files](#) steps (above).

Note: By default, the **public folder** is readable by all Andrew users. Use this folder when sharing files. Other folders may be accessible. Each user sets access rights for his AFS space. For more information on access rights, see the [Protection Rights \(http://www.cmu.edu/computing/doc/unix/pts-groups/protect-rights.html\)](http://www.cmu.edu/computing/doc/unix/pts-groups/protect-rights.html) section of the [Unix \(http://www.cmu.edu/computing/doc/unix/index.html\)](http://www.cmu.edu/computing/doc/unix/index.html) documentation.

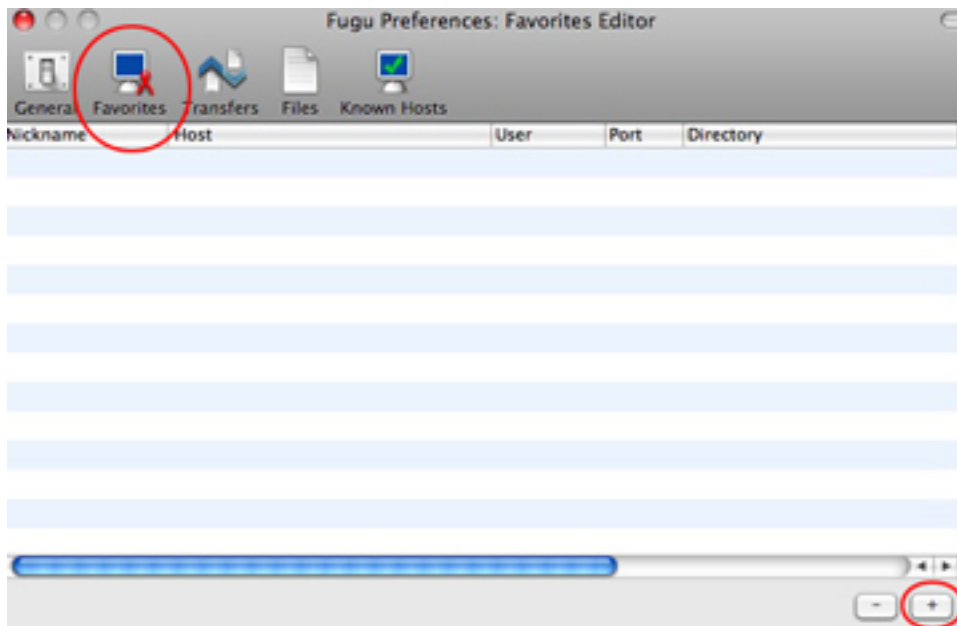
Last Updated: 11/10/09

Favorites

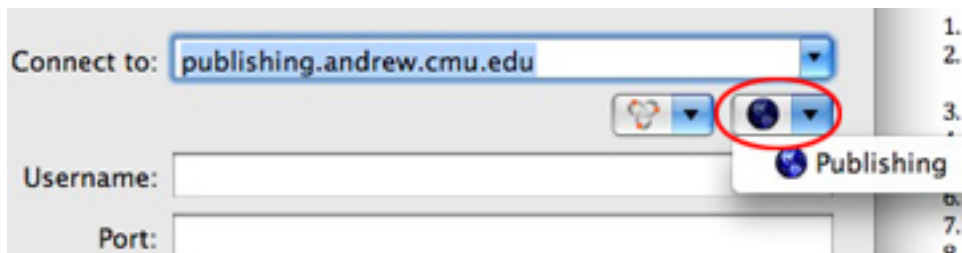
If there is a host name that you connect to frequently, you may want to create a shortcut, or "favorite", to access it more quickly. Information on creating or modifying favorites can be found on this page.

Creating a Favorite

1. Open the Fugu application.
2. From the **Fugu** menu, select **Preferences**.
3. Select **Favorites** from the menu bar.
4. Select **+** from the lower right corner of the screen.



5. Enter a name for the favorite under **Nickname**, for example "Publishing".
6. Enter an IP address under **Host**, such as "publishing.andrew.cmu.edu".
7. This will now appear under the **SFTP favorites**, or the globe icon, in the connection window.



Editing a Favorite

1. Open the Fugu application.
2. From the **Fugu** menu, select **Preferences**.
3. Select **Favorites** from the menu bar.
4. Select the information you would like to edit, and make your changes.

Last Updated: 7/11/06

Last Reviewed: 2/20/09