

# Using Fetch 5.05 for Mac

This document contains the following sections:

- [Introduction](#)
- [Connect to a Remote Server](#)
- [Transfer Files](#)
- [Shortcuts](#)

---

**For information related to this topic refer to:**

- [Fugu FSTP \(http://www.cmu.edu/computingdoc/software/fugu/index.html\)](http://www.cmu.edu/computingdoc/software/fugu/index.html)
- [Terminal \(http://www.cmu.edu/computingdoc/software/terminal/index.html\)](http://www.cmu.edu/computingdoc/software/terminal/index.html)

## Introduction

Fetch is a file transfer program for the Macintosh platform. Fetch 5 runs on Mac OS X 10.2.4 or newer. It provides a method of transferring files quickly and easily from your computer to other computers or to a server using the File Transfer Protocol (FTP) or SSH File Transfer Protocol (SFTP).

Features include:

- password and data-stream security on the network.
- synchronization of a folder on a computer with a directory on a server using one command.
- point-and-click, drag and drop file transfers to and from any machine with an FTP Server over a TCP/IP network.
- allows for transfer of files, folders and directories with a single command.
- easily transfers only the files that have been recently updated.
- allows users to create, edit, delete and maintain remote files from the same window.

The remainder of this document provides instructions for using Fetch at Carnegie Mellon.

## Install Fetch

From the My Accounts tab of the [Carnegie Mellon Web Portal \(https://my.cmu.edu/\)](https://my.cmu.edu/), select the Alphabetical link under Software and then select Fetch from the list. Follow the instructions provided on the download page to download and install Fetch.

*Last Updated: 06/06/06*

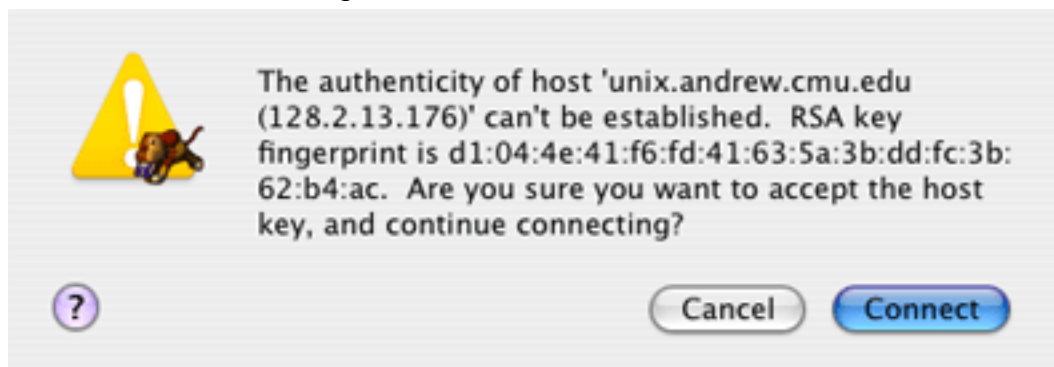
*Last Reviewed:2/20/09*

## Connect to a Remote Server

Follow these instructions to connect to a remote server.

1. Launch the Fetch program. The New Connection window is displayed.  
**Note:** If the window does not appear automatically, select **File > New Connection**.
2. Complete the New Connection dialog box fields as indicated below.

- In the **Hostname** field, enter the computer or server name that you want to connect to (e.g., unix.andrew.cmu.edu or publishing.andrew.cmu.edu).
- Type your **Andrew User ID** in the Username field.
- Select **SFTP** from the **Connect using** drop-down list.  
**Note:** Once SFTP is selected as the security type, the "Enable encryption" checkbox is activated. By selecting SFTP, you are ensuring that your session is secure.
- Type your **Andrew password** in the Password field.
- Click **Connect**.
- The following warning message may display the first time you authenticate to the host server. If you receive this warning, click **Connect** to accept the key and continue connecting.



3. The File Transfer window displays.

When connected to your AFS space at **unix.andrew.cmu.edu**, you can transfer files to and from your home directory and your computer.

*Last Updated: 2/20/09*

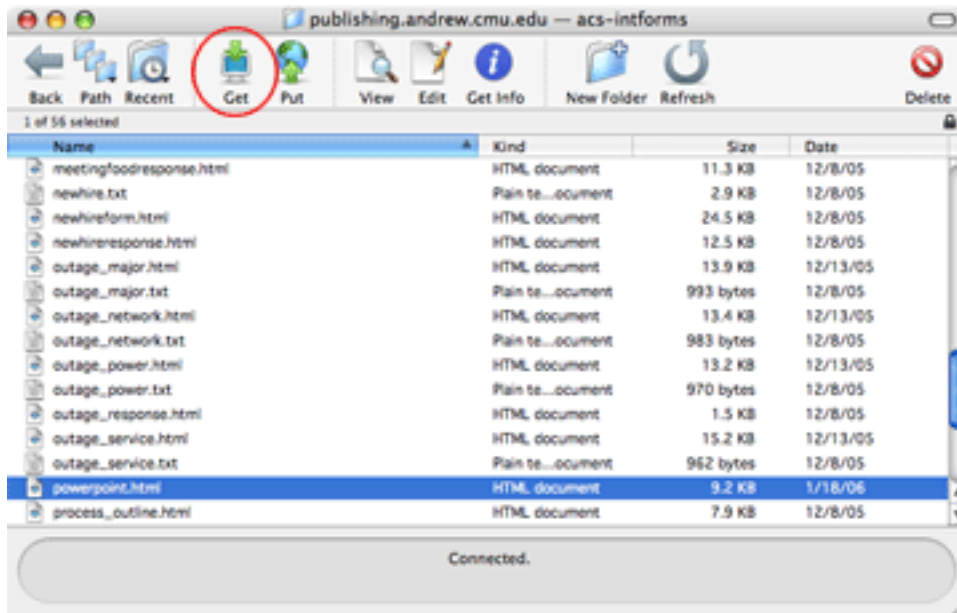
## Transfer Files

Use the following sections to help you transfer files from and/or to a remote server or computer.

### Transfer Files from the Remote Server/Computer

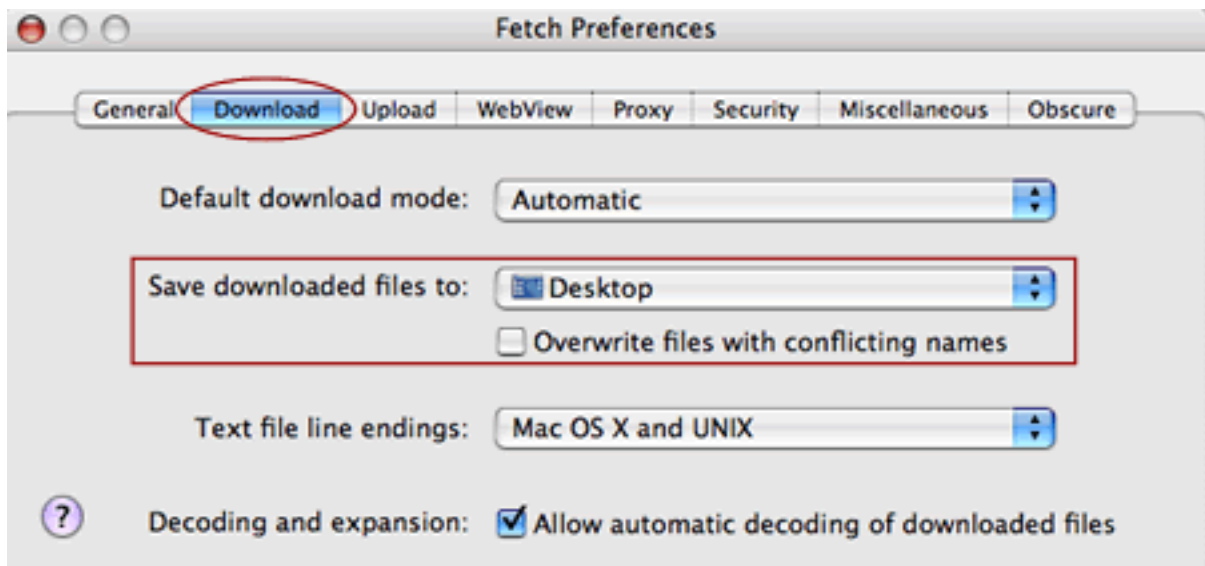
Follow these steps to transfer files from the remote server to your local machine.

1. From the Transfer window, select the file(s) or folder that you want to transfer to your local machine and click **Get**.



2. As the file is being transferred to your desktop, the transfer progress is displayed in the window. Continue to transfer files or select **Fetch > Quit Fetch** to close the connection and exit the program.

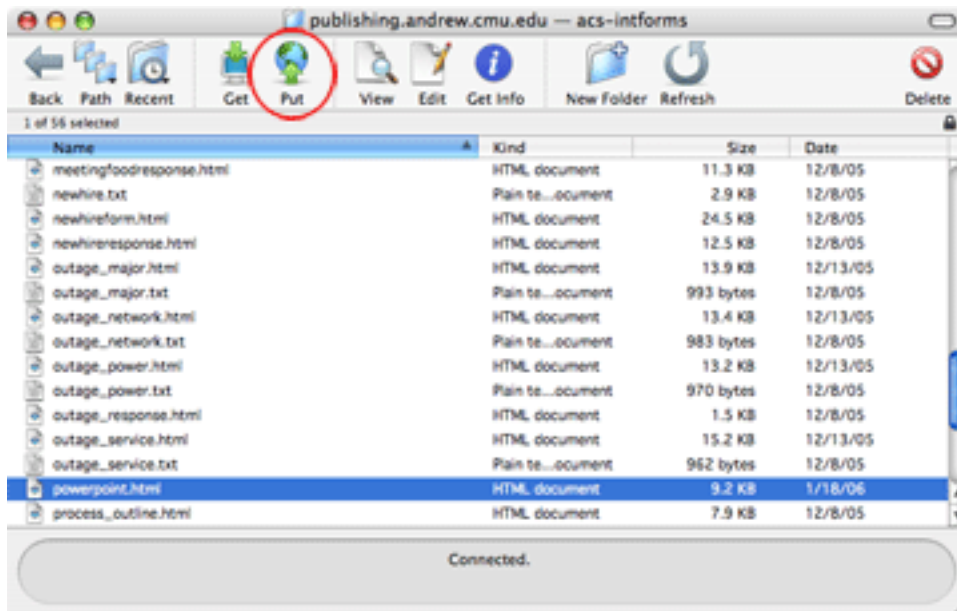
Note: To change the download location, select **Fetch > Prefrences**. Choose **Download** and select the location from the **Save download files to** drop-down menu.



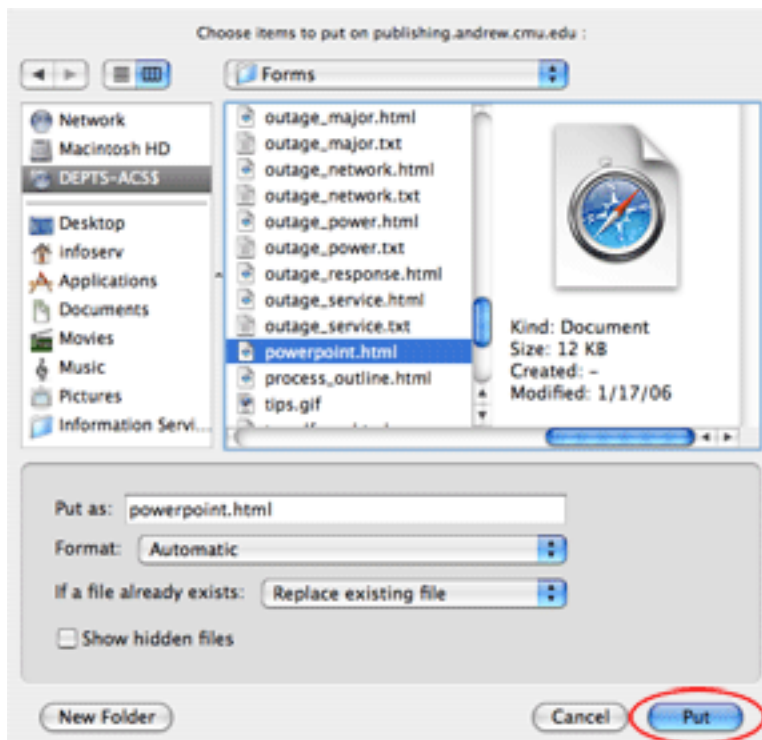
## Transfer Files to the Remote Computer/Server

Follow these instructions to transfer files to the host computer/server from your local machine.

1. Once you are connected to the host computer/server, navigate to the destination folder.
2. Click **Put** on the Transfer window.



3. The "Choose a File" dialog box is displayed. Select the file or folder that you want to transfer and click **Put**.

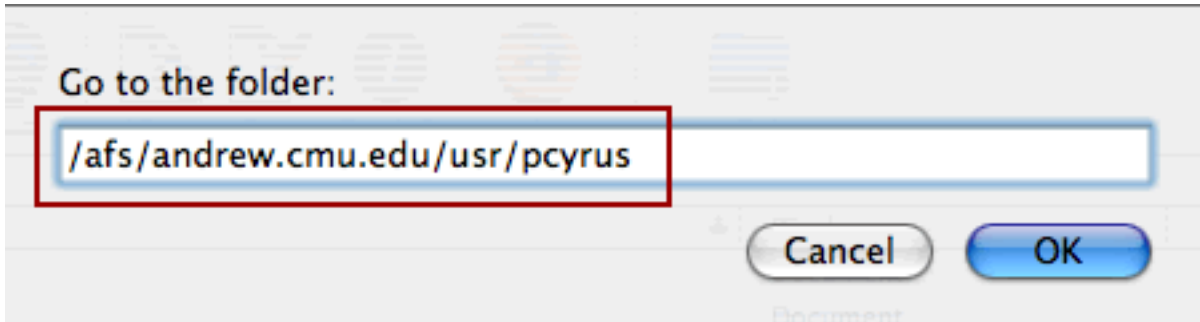


4. The selected file is transferred. Continue to select and transfer files or select **Fetch > Quit Fetch** to close the connection and exit the program.

## Transfer Files from Another User's AFS Space

To transfer files from another user's home directory (AFS space) on unix.andrew.cmu.edu:

1. Select **Go > Go to Folder**.
2. Enter the path to the person's home directory **/afs/andrew.cmu.edu/usr/AndrewID**.



3. Follow the [Transfer Files from the Remote Server/Computer](#) steps above.  
**Note:** By default, the **public folder** is readable by all Andrew users. Use this folder when sharing files. Other folders may be accessible. Each user sets access rights for his AFS space. For more information on access rights, see the [Protection Rights \(http://www.cmu.edu/computingdoc/unix/pts-groups/protect-rights.html\)](http://www.cmu.edu/computingdoc/unix/pts-groups/protect-rights.html) section of the [Unix \(http://www.cmu.edu/computingdoc/unix/index.html\)](http://www.cmu.edu/computingdoc/unix/index.html) documentation.

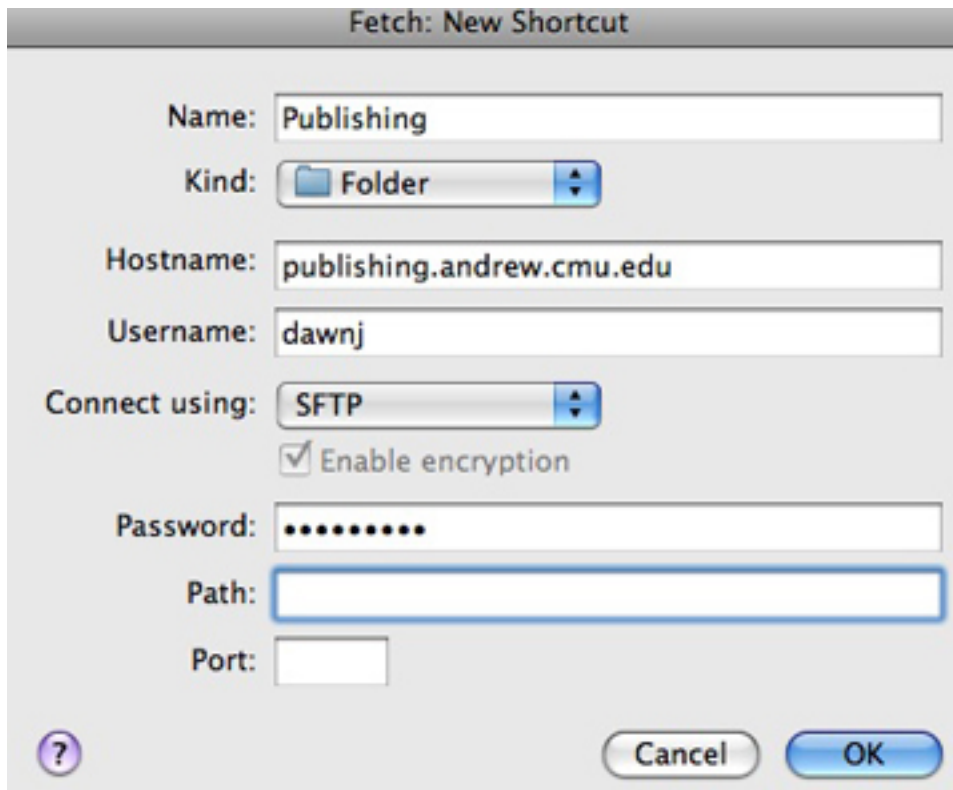
*Last Updated: 2/20/09*

## Fetch Shortcuts

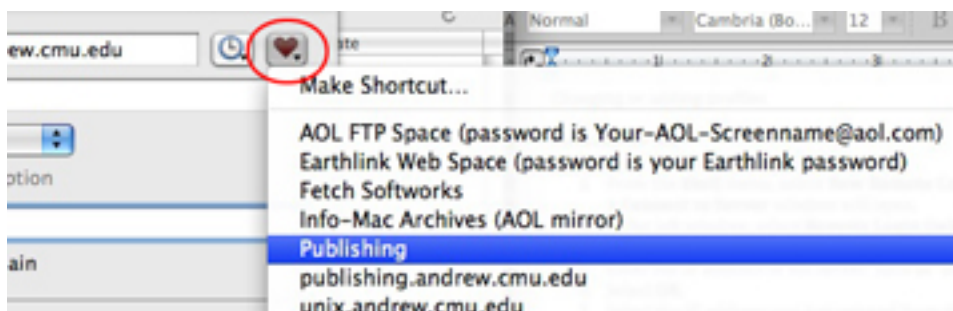
Shortcuts are created to aid in connecting to servers. In other software applications, "shortcuts" would be known as "favorites" or "profiles".

### Creating a Shortcut

1. Open the Fetch application.
2. From the **Shortcut** menu, select **New Shortcut**.
3. Enter a name for the shortcut, such as "Publishing".
4. Enter the IP address in the field for **Hostname**, such as "publishing.andrew.cmu.edu"
5. Enter your userID.
6. Select **SFTP** for the connection type.
7. Select **OK**.

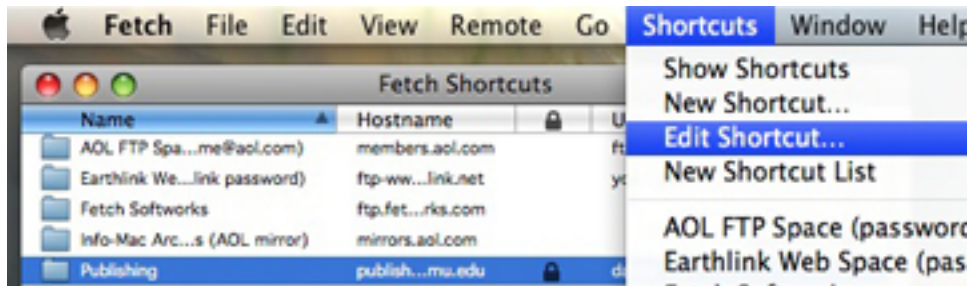


8. The shortcut is now available under the Shortcut menu, or the heart symbol on the initial screen.



## Editing a Shortcut

1. Open the Fetch application.
2. From the **Shortcut** menu, select **Show Shortcuts**.
3. Select the shortcut name that you would like to edit and select **Edit Shortcut** from the **Shortcut** menu.
4. Edit the information you would like to change, such as the name or IP address.
5. Select **OK**.



*Last Updated: 6/6/06*

*Last Reviewed: 2/20/09*