

# Configuring Time Capsule

This document contains the following sections:

- [Overview](#)
  - [Steps for Configuring Time Capsule](#)  
(<http://www.cmu.edu/computing/doc/network/netreg/new-transfer.html>)
- 

**For information related to this topic refer to:**

- [Airspace Guideline](http://www.cmu.edu/computing/guideline/air-space.html) (<http://www.cmu.edu/computing/guideline/air-space.html>)
- [File Sharing](http://www.cmu.edu/computing/doc/network/fileshare/index.html) (<http://www.cmu.edu/computing/doc/network/fileshare/index.html>)  
(<http://www.cmu.edu/computing/doc/network/connect/getconnected.pdf>)

*Last Updated: 4/23/08*

## Overview: Configuring Time Capsule

Apple recently released Time Capsule, a WiFi base station with an internal hard drive that can be used as a wireless-accessible network disk for file sharing by Mac & PC users. In addition, Mac users can use Time Capsule for wireless backups. In order to use a Time Capsule on campus, you must first configure it to work properly with our wireless network.

Most users are likely to enable the device as a wireless access point in a home environment; however, user-installed wireless access points are not permitted in campus buildings, as per the Carnegie Mellon [airspace guideline \(http://www.cmu.edu/computing/guideline/air-space.html\)](http://www.cmu.edu/computing/guideline/air-space.html), since this would interfere with the existing campus wireless network. Any attempts to use Time Capsule without first configuring it will result in creating a rogue access point, which could be removed from the network.

Fortunately, Time Capsule can be configured to join an existing wireless network as a client, while maintaining the rest of its functionality. Keep in mind that this means it will be accessible to everyone on Carnegie Mellon's wireless network, so it is imperative that Time Capsule units are configured to be secure.

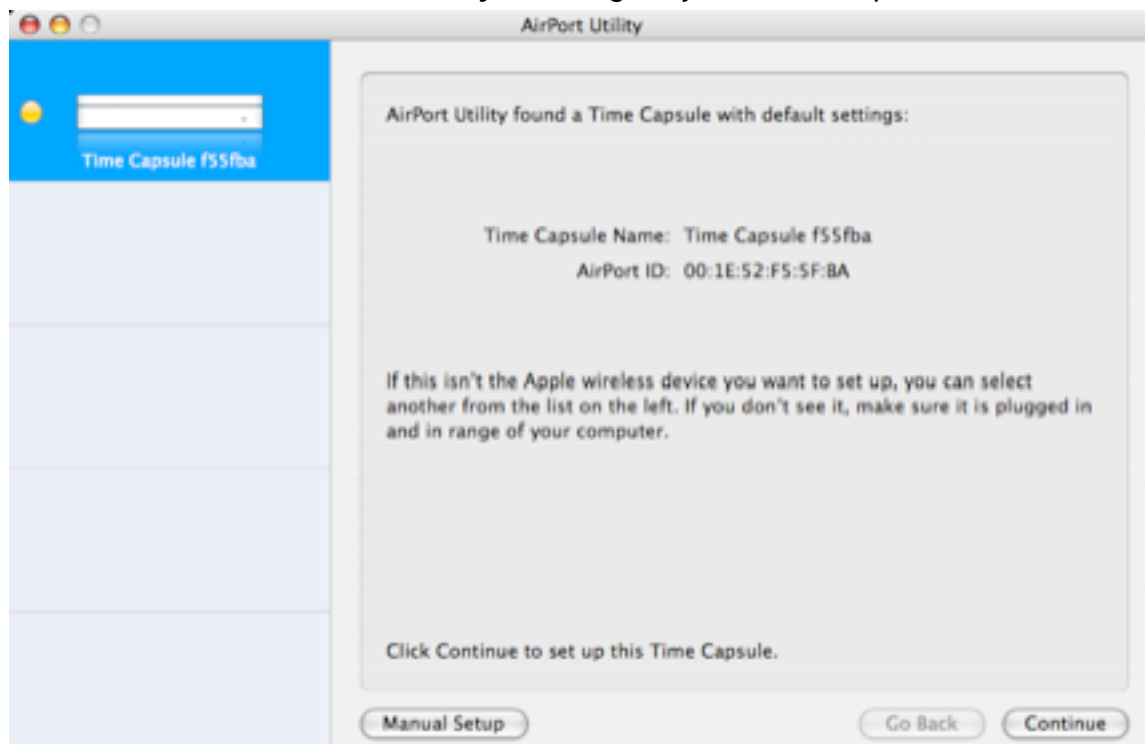
## Steps for Configuring Time Capsule

The following steps outline how to configure Time Capsule as a wireless client and password protect it.

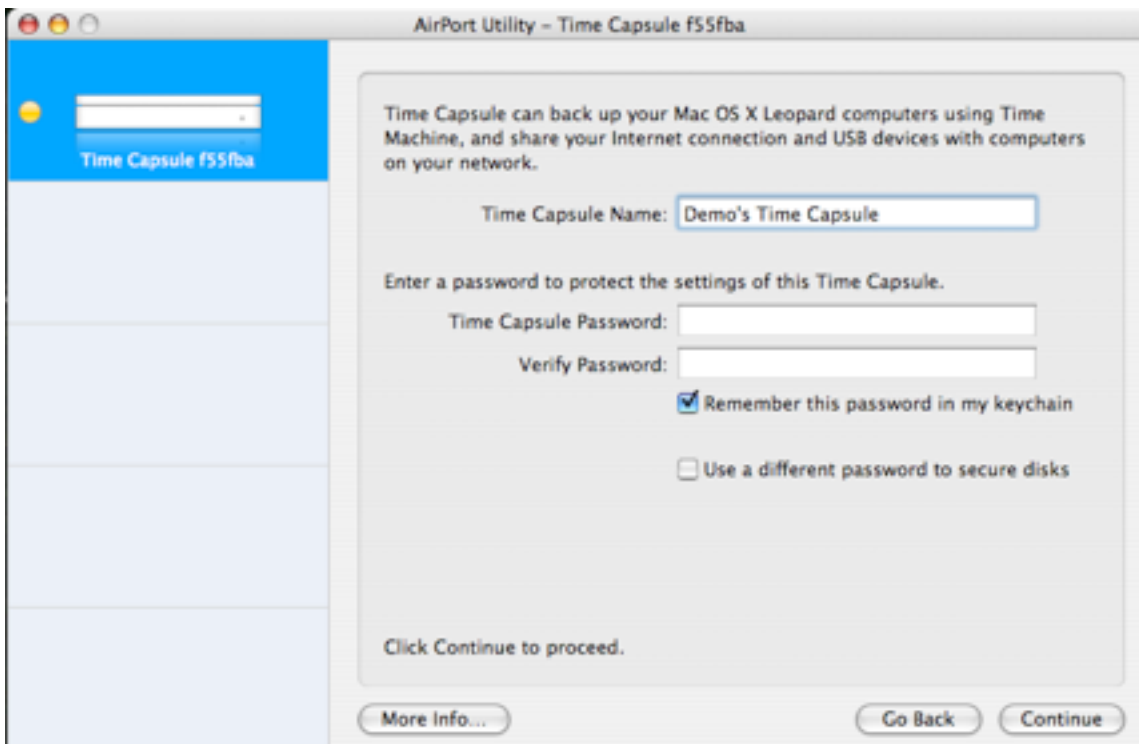
**Please note:** During this initial start-up period, the unit is unprotected by passwords, so anyone can connect to and configure it. If you have the opportunity to do this initial configuration at home prior to bringing the unit to campus, that would be a best practice for security reasons.

### Steps:

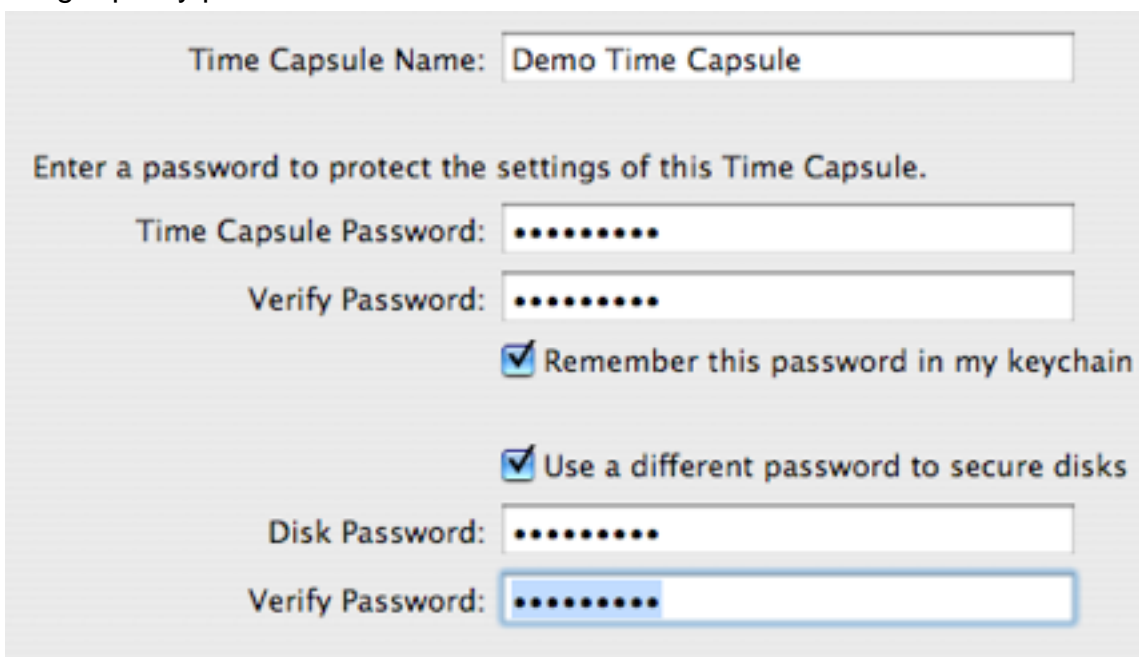
1. Locate **AirPort Utility** in the **Application/Utilities** folder on your computer.
2. Double-click on the **AirPort Utility** to configure your Time Capsule as a client.



3. Select **Continue**.

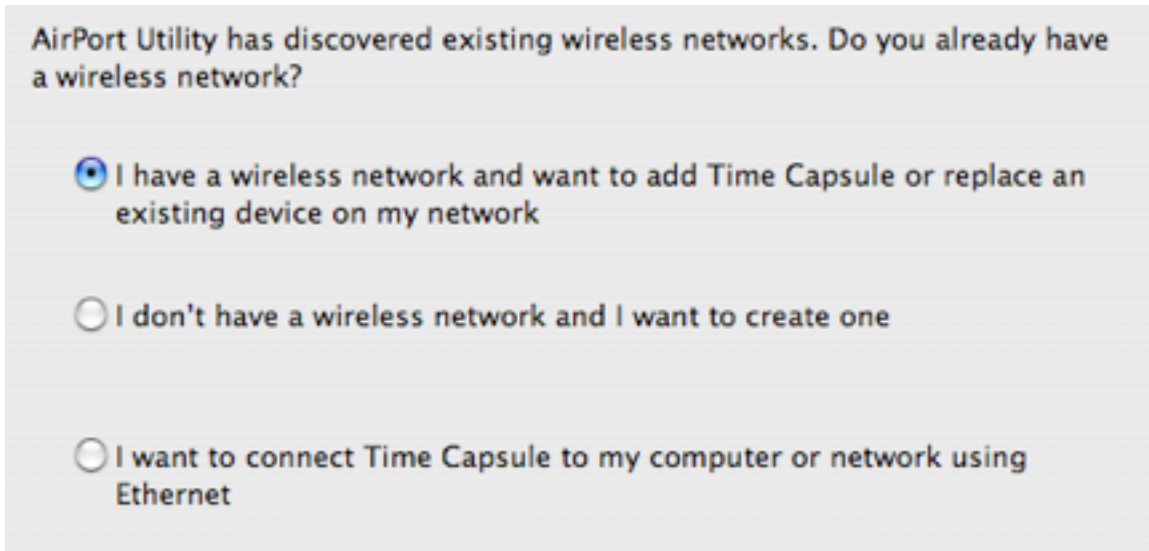


4. You will be prompted to switch wireless networks. Select **Switch**.
5. On the next screen, [enter a strong password](http://www.cmu.edu/computing/doc/accounts/passwords/select.html) in the **Time Capsule Password** field. For security purposes, please use a password that is NOT your Andrew password.
6. Select the **Use a different password to secure disks** checkbox if there is any possibility that you'll want to allow someone else to have access to your Time Capsule disk. If you select this box, you will be prompted to add a separate secure password for outside users. Again - do NOT use your Andrew password, but chose a high quality password.



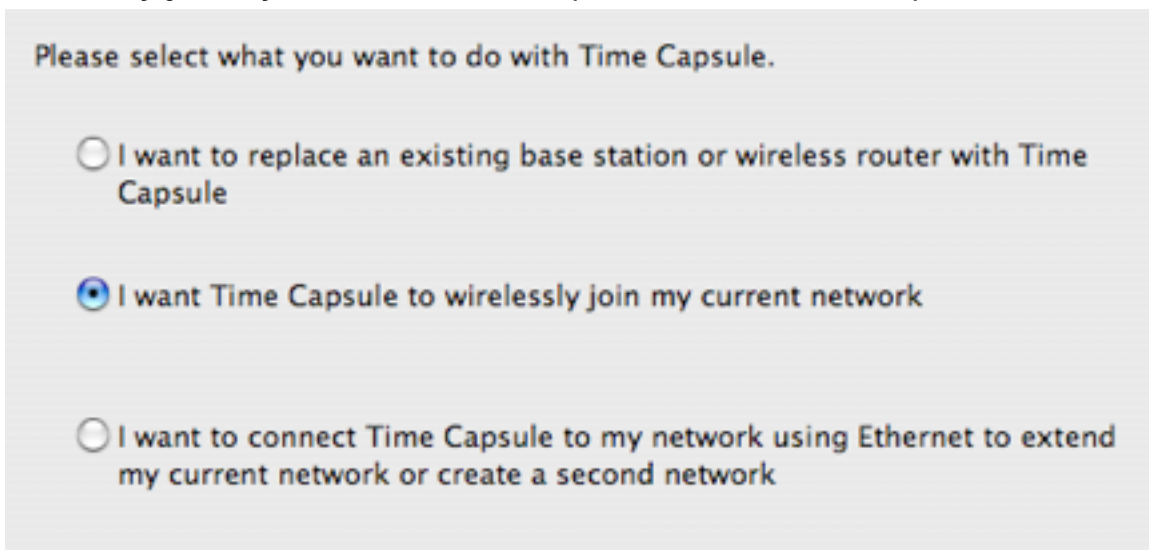
7. Select **Continue**.

8. Select **I have a wireless network.**



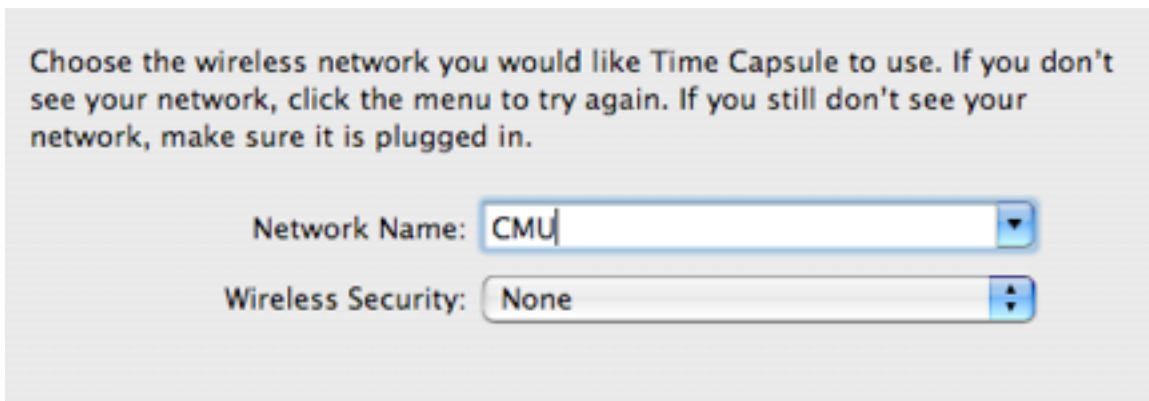
9. Select **Continue.**

10. On this screen, for use on campus, you **MUST** select the “**I want Time Capsule to wirelessly join my current network**” option, **NOT** the default option.

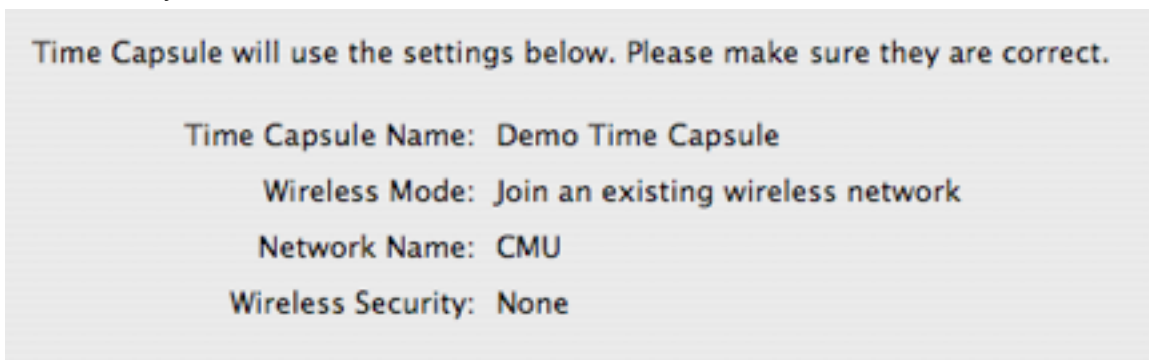


11. Select **Continue.**

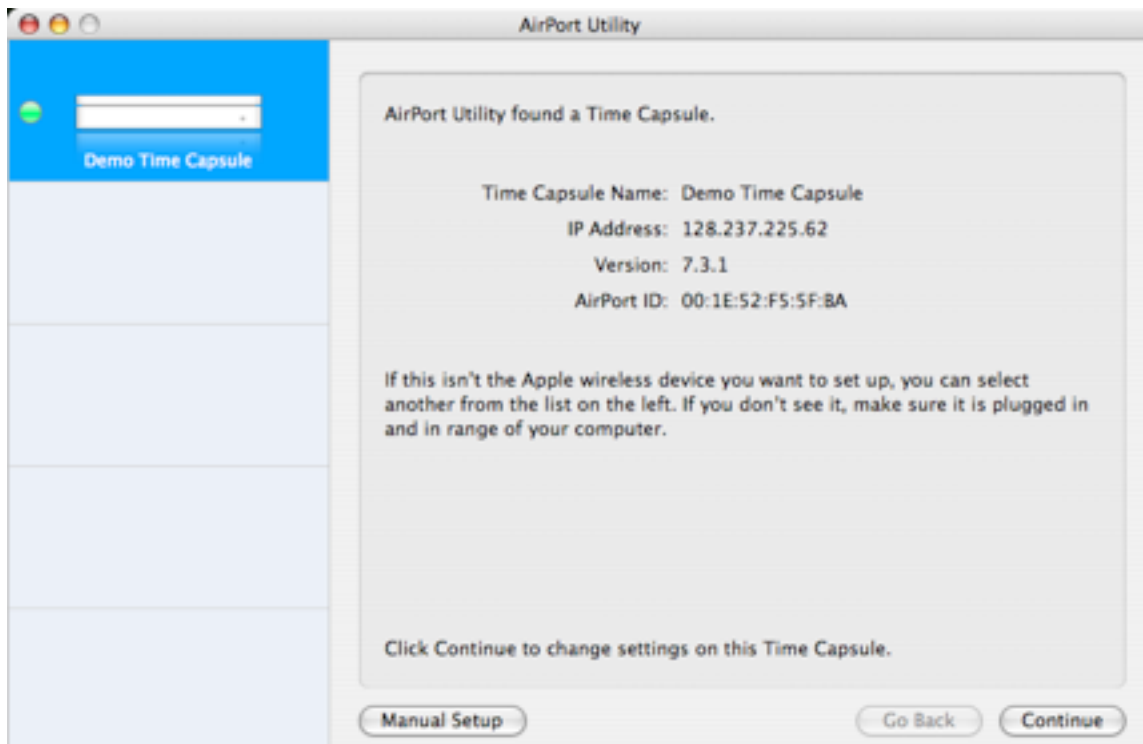
12. Select the wireless network that you would like Time Capsule to join.
- a. If you are at home – your wireless home network should present as an option.
  - b. If your goal is to connect it on campus – type in **CMU** with a security method of **None**.



13. Select **Continue**.
14. You will be presented with a series of summary screens. Review the information for accuracy.



15. Select **Update**.
16. Your device will be temporarily unavailable. Select **Continue**.
17. Select **Done**.
18. When you arrive on campus, you will need to register the "AirPort ID", just as you would register the wireless Ethernet address of your laptop. <http://www.cmu.edu/computing/network/wire/wireless.html> (<http://www.cmu.edu/computing/network/wire/wireless.html>) The address you will need to register, can be found on the AirPort Utility primary screen, as well as the initial discovery screen.



19. **Caution:** When your Time Capsule connects to the network, it will advertise its availability locally. Due to the seamless wireless environment we have on campus, this means that everyone on wireless will see the announcement. Any users who have enabled the AirPort Disk Utility, or the Leopard Time Machine function will get a dialog box asking if they'd like to connect to your Time Capsule. This is why it is imperative that you [select a strong password \(http://www.cmu.edu/computing/doc/accounts/passwords/select.html\)](http://www.cmu.edu/computing/doc/accounts/passwords/select.html), and use a separate password for the disk access as opposed to the administration password for the unit.

