

Configuring Apple AirPort Express

This document contains the following sections:

- [Overview](#)
 - [Steps for Configuring AirPort Express](#)
(www.cmu.edu/computingdoc/network/netreg/new-transfer.html)
-

For information related to this topic refer to:

- [Airspace Guideline](http://www.cmu.edu/computingguideline/air-space.html) (www.cmu.edu/computingguideline/air-space.html)
- [File Sharing](http://www.cmu.edu/computingdoc/network/filesshare/index.html) (www.cmu.edu/computingdoc/network/filesshare/index.html)
(www.cmu.edu/computingdoc/network/connect/getconnected.pdf)

Last Updated: 5/28/08

Overview: Configuring AirPort Express

Apple AirPort Express is a compact wireless base station that allows users to stream music from iTunes to a stereo or remote speakers wirelessly, as well as sharing a USB-connected printer. Similar to [Time Capsule \(www.cmu.edu/computingdoc/network/time-capsule/index.html\)](http://www.cmu.edu/computingdoc/network/time-capsule/index.html), the default configuration of AirPort Express is that of a wireless access point.

Most users are likely to enable the device as a wireless access point in a home environment; however, user-installed wireless access points are not permitted in campus buildings, as per the Carnegie Mellon [airspace guideline \(www.cmu.edu/computingguideline/air-space.html\)](http://www.cmu.edu/computingguideline/air-space.html), since this would interfere with the existing campus wireless network. Any attempts to use AirPort Express without first configuring it will result in creating a rogue access point, which could be removed from the network.

Fortunately, AirPort Express can be configured to join an existing wireless network as a client, while maintaining the rest of its functionality. Keep in mind that this means it will be accessible to everyone on Carnegie Mellon's wireless network, so it is imperative that units are configured to be secure.

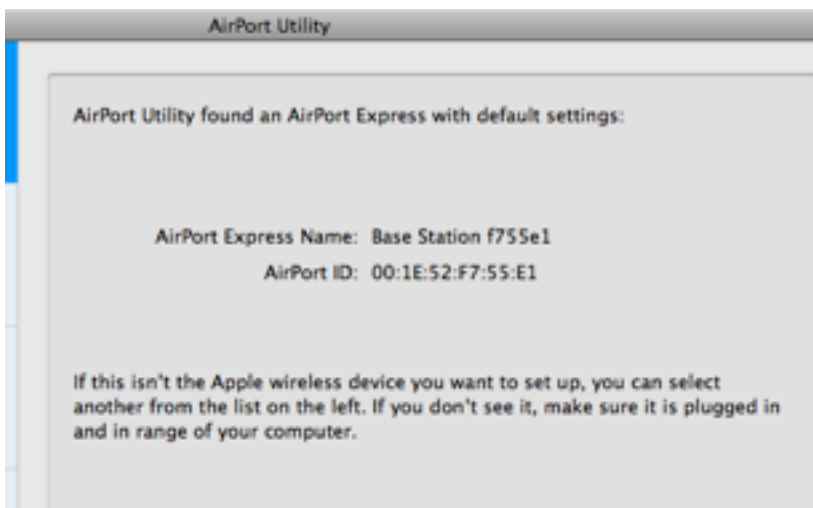
Steps for Configuring Apple AirPort Express

The following steps outline how to configure AirPort Express as a wireless client and password protect it.

Please note: During this initial start-up period, the unit is unprotected by passwords, so anyone can connect to and configure it. If you have the opportunity to do this initial configuration at home prior to bringing the unit to campus, that would be a best practice for security reasons.

Steps:

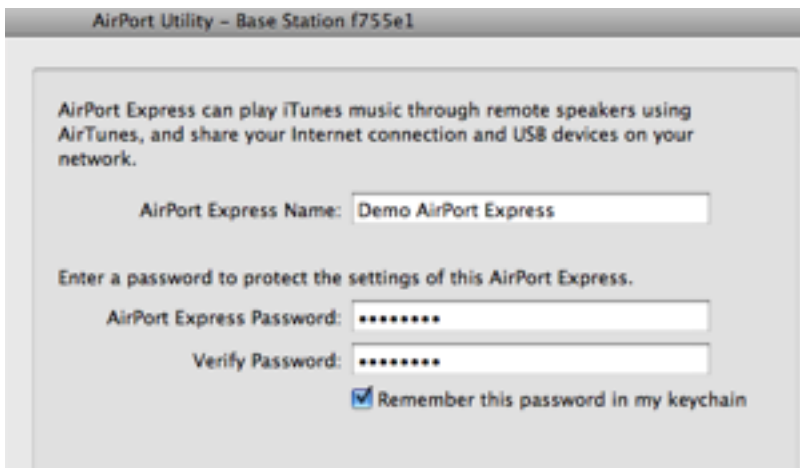
1. Locate **AirPort Utility** in the **Application/Utilities** folder on your computer.
2. Double-click on the **AirPort Utility** to configure your AirPort Express as a client.
3. Select **Continue**.



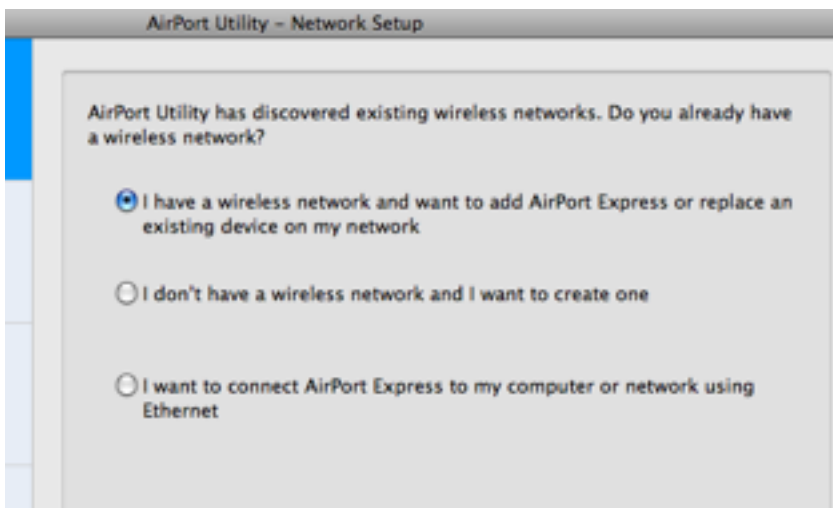
4. You will be prompted to switch wireless networks. Select **Switch**.



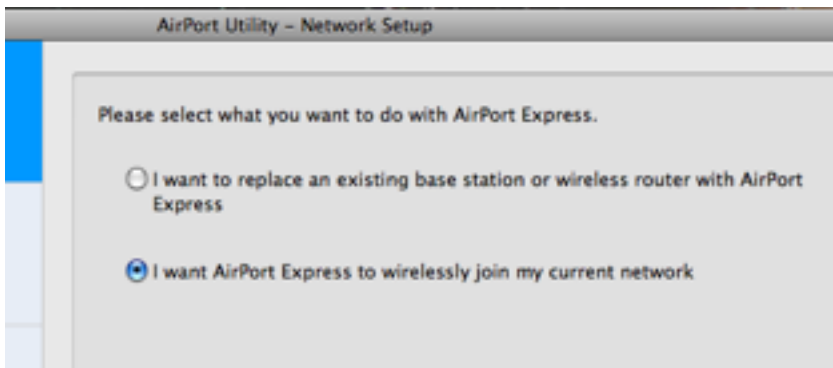
5. On the next screen, [enter a strong password \(www.cmu.edu/computingdoc/accounts/passwords/select.html\)](http://www.cmu.edu/computingdoc/accounts/passwords/select.html) in the **AirPort Express Password** field. For security purposes, please use a password that is NOT your Andrew password.



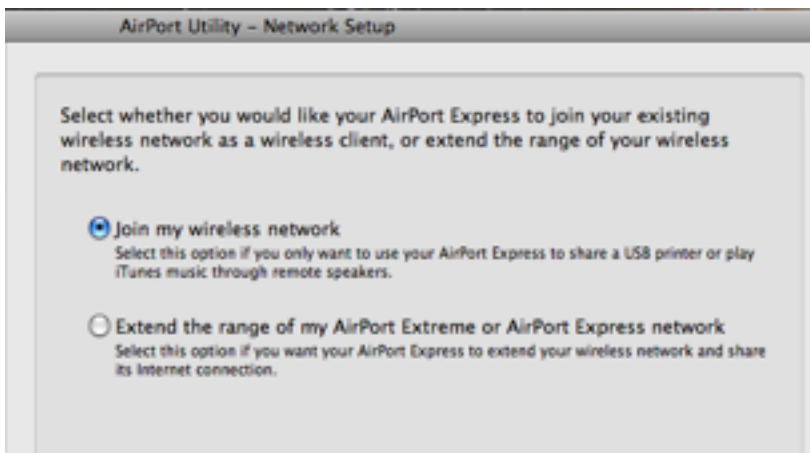
6. Select **Continue**.
7. Select **I have a wireless network**.



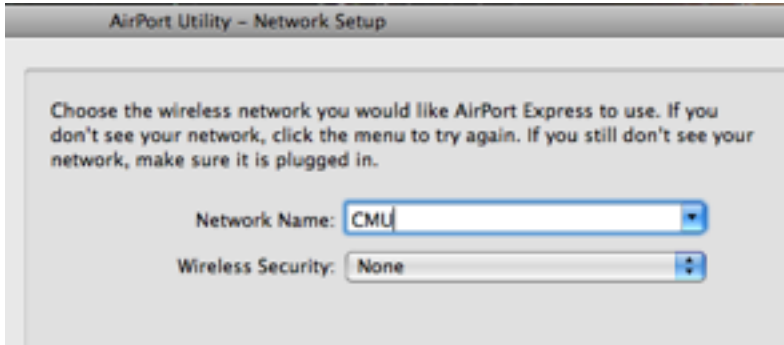
8. Select **Continue**.
9. On this screen, for use on campus, you **MUST** select the **“I want AirPort Express to wirelessly join my current network”** option, **NOT** the default option.



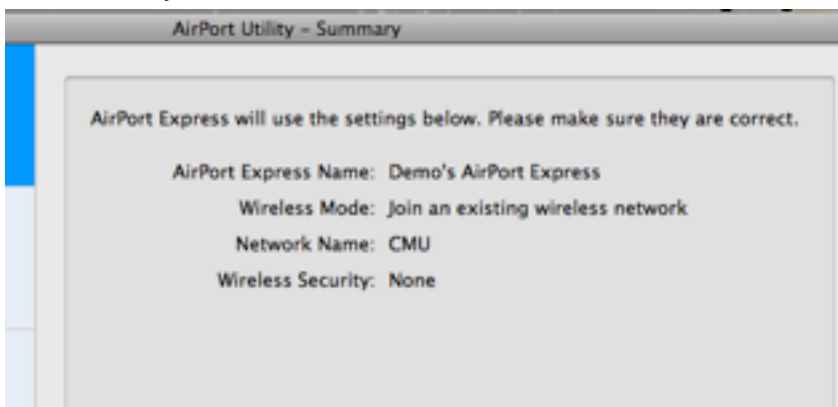
10. Select **Continue**.
11. You will be presented with what appears to be the same question again. Verify that **“Join my wireless network”** is selected, and not the default.



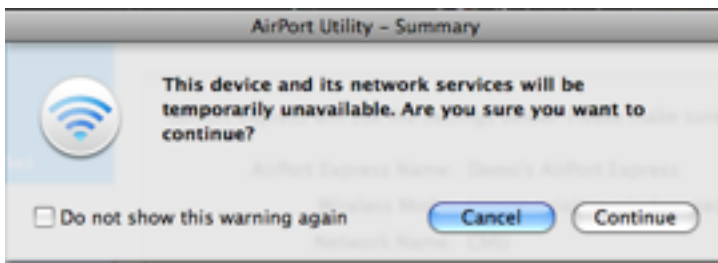
12. Select **Continue**.
13. Select the wireless network that you would like AirPort Express to join.
 - a. If you are at home – your wireless home network should present as an option.
 - b. If your goal is to connect it on campus – type in **CMU** with a security method of **None**.



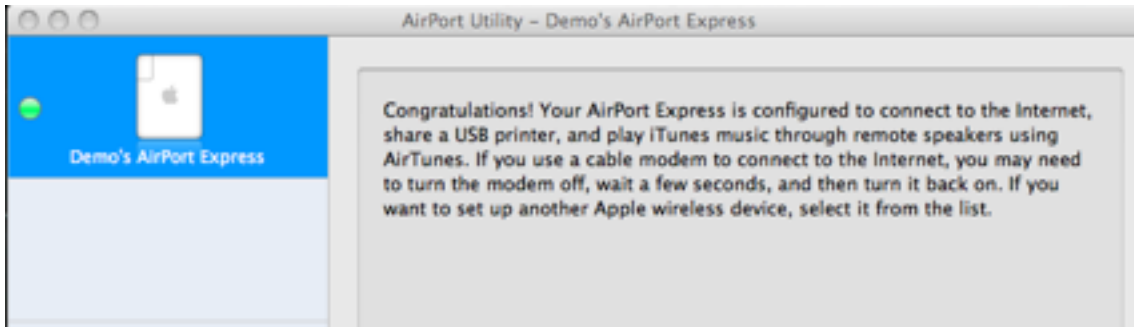
14. Select **Continue**.
15. You will be presented with a series of summary screens. Review the information for accuracy.



16. Select **Update**.
17. Your device will be temporarily unavailable. Select **Continue**.



18. Select **Done**.

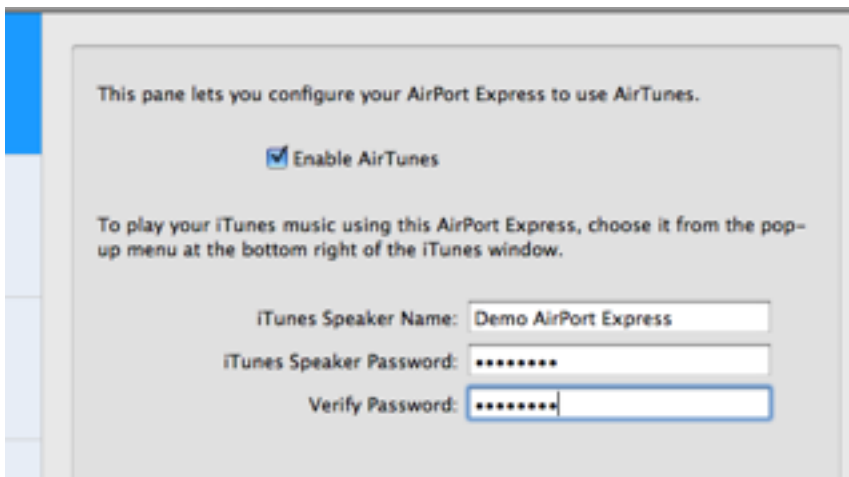


19. In the current mode, your speakers will be available to anyone on the wireless network on campus. In order to restrict access to your speakers, we recommend creating a password on Music Sharing. Select the **AirPort Utility** again (as in steps 1-3).

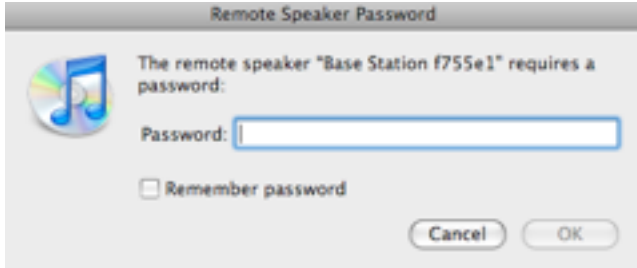


20. Select **Manual Setup**.

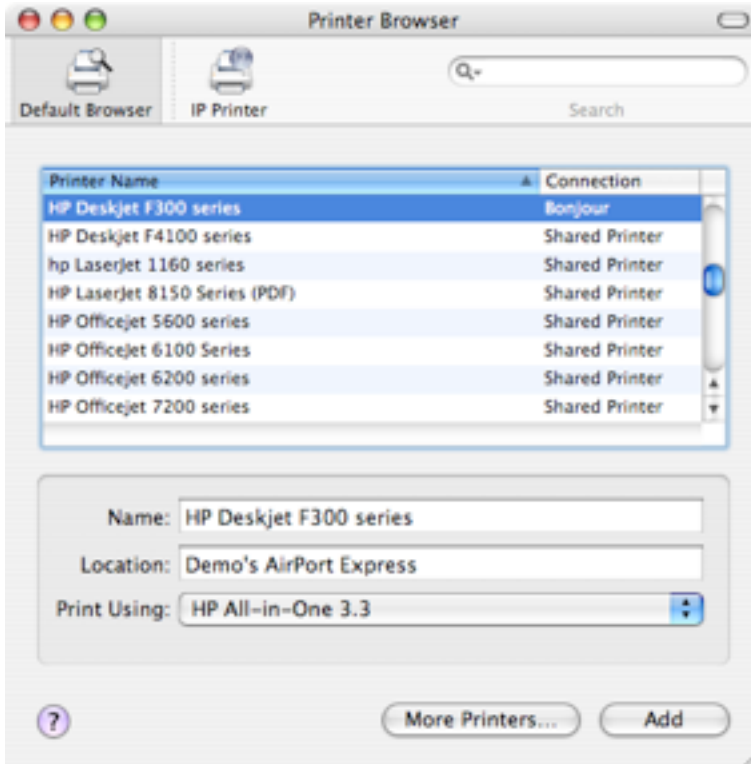
21. From the menu bar, select **Music** to configure the speaker password.



22. After entering a strong password, select **Update**. Anyone attempting to connect to your speakers will be prompted to enter a password.



23. Similar to sharing speakers, everyone on wireless will know when your printer is available. However, printer sharing cannot be limited via a password, so please be aware that you may receive unwanted print jobs on your printer. Your printer will appear in the Print Finder:



24. When you arrive on campus, you will need to register the "AirPort ID", just as you would register the wireless Ethernet address of your laptop. <http://www.cmu.edu/computing/network/wire/wireless.html> (www.cmu.edu/computingnetwork/wire/wireless.html). The address you will need to register, can be found on the AirPort Utility primary screen, as well as the initial discovery screen.

