

Creating a Pop-up Menu

Objectives

Using Fireworks, create a pop-up menu for your web site.

1. Define the term **pop-up menu** in your own words.
2. Define the term **navigation bar**.
3. Identify the **hotspot** tools.
4. Identify the **Add, Delete, Indent** and **Outdent** menu buttons.
5. List the process used to create a pop-up menu.
6. List the process used to export the pop-up menu to HTML.
7. List the process used to add a pop-up menu to a Dreamweaver document.

Introduction

Fireworks easily generates a pop-up menu that can be used in an HTML document. A pop-up menu is created from a navigation bar. **Pop-up menus** are displayed when a user moves over or *clicks* a hotspot. These menus are useful in organizing your navigation structure. In this lesson, we will discuss the steps for creating a pop-up menu and exporting the menu for use in a Dreamweaver document.



Example of a pop-up menu

Creating a navigation bar

A **navigation bar** is a group of buttons that provide links to different areas of a web site. A navigation bar generally looks the same from web page to web page. It can be horizontal or vertical. In Fireworks, you can create a navigation bar using the Vector drawing tools.



Vector tools



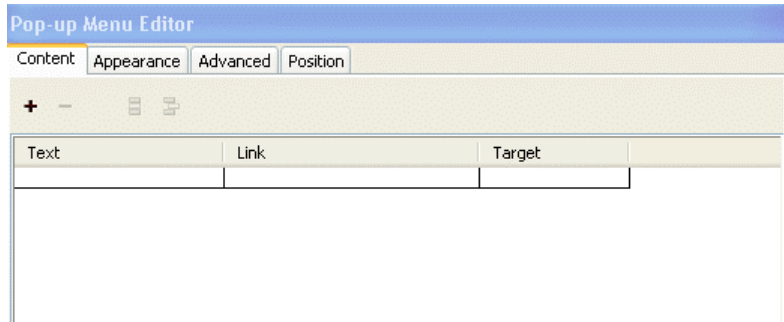
Example navigation bar



Notes:

Creating a basic pop-up menu

The Pop-up Menu Editor is where you choose the basic structure and content of the pop-up menu. It contains four tabs to guide you through the process.



To create a simple pop-up menu

1. Identify an area on the navigation bar where the pop-up menu will appear.
2. Use one of the **hotspot** tools to draw a target area.
3. Choose **Modify > Pop-up Menu > Add Pop-up Menu**.



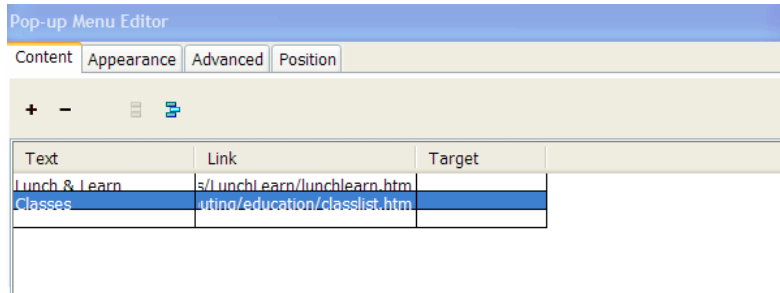
Hotspot tools




Notes:

The *Content* tab

The *Content* tab has options for determining the basic menu structure, as well as the text, link and target for each menu item.



1. Click the **Add Menu** button  to add an empty menu item.

Text specifies the text for the menu item.

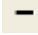
Link determines the URL of the menu item. If you've entered URLs for other web objects in the document, those URLs appear in the Link pop-up menu.

Target designates the target for the URL.

2. Click **Next** to move to the *Appearance* tab or choose another tab to continue building the pop-up menu.



Note: Entering content on the last line in the window adds an empty line below it.

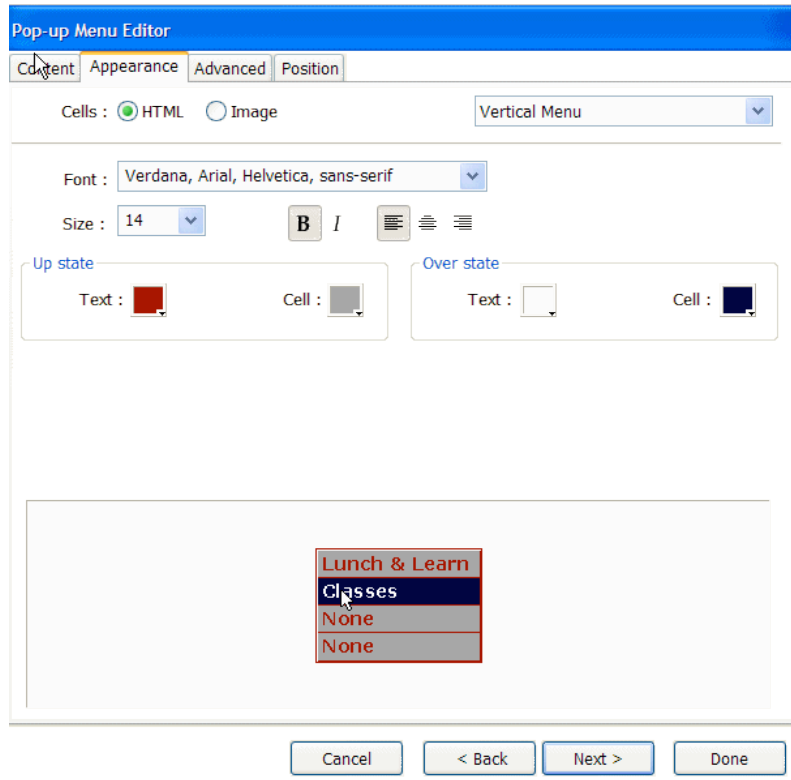
- To delete a menu item, highlight it and click the **Delete Menu** button. 

Notes:



The Appearance tab

After you create a basic menu, you can format the text, apply graphic styles to the Over and Up states, and choose vertical or horizontal orientation in the *Appearance* tab.



HTML sets the menu's appearance using HTML code only. This setting produces pages with smaller file sizes.

Image gives you a selection of graphic image styles to use as the cell background. This setting produces pages with larger file sizes.

The *Advanced* Tab

The *Advanced* tab offers additional settings to control cell size, padding, and spacing; text indentation; menu disappearance delay; and border width, color, shadow, and highlight.

The screenshot shows the 'Pop-up Menu Editor' dialog box with the 'Advanced' tab selected. The dialog has four tabs: 'Content', 'Appearance', 'Advanced', and 'Position'. The 'Advanced' tab contains the following settings:

- Cell width: 124 (text input) and Automatic (dropdown)
- Cell height: 20 (text input) and Automatic (dropdown)
- Cell padding: 3 (text input) and Text indent: 0 (text input)
- Cell spacing: 0 (text input) and Menu delay: 1000 ms (text input)

Below these settings, there are options for 'Pop-up borders':

- Show borders
- Border width: 1 (text input)
- Border color: [Red color swatch]
- Shadow: [Red color swatch]
- Highlight: [White color swatch]

At the bottom of the dialog, there is a preview window showing a menu with the following items:

- Lunch & Learn
- Classes (highlighted)
- Classes
- Classes

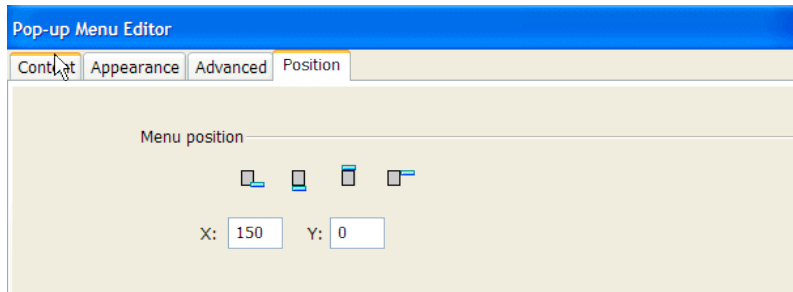
At the bottom of the dialog, there are four buttons: 'Cancel', '< Back', 'Next >', and 'Done'.



Notes:

The *Position* Tab

The *Position* tab lets you specify a pop-up menu's position.



3. Click **Done** to complete the pop-up menu.



Note: In the workspace, the hotspot where you built the pop-up menu displays a blue behavior line attached to an outline of the pop-up menu.

To view a pop-up menu, you must press **F12** to preview it in a browser. The preview in Fireworks will not display pop-up menus.




Notes:

Creating submenus within a pop-up menu


Using the **Indent Menu** and **Outdent Menu** buttons on the *Content* tab of the Pop-up Menu Editor, you can create submenus within your pop-up menu. The submenu appears when the user moves over or *clicks* a pop-up menu item. You can create as many levels of submenus as you want.



To create a pop-up submenu

1. Open the *Content* tab of the Pop-up Menu Editor (**Modify > Pop-up Menu > Edit Pop-up Menu**) and create menu items.
2. Select a pop-up menu item that you wish to make a submenu item.
3. Click the **Indent Menu** button  to designate the item as a submenu item under the item directly above it.
4. Click **Done**.



Note: To remove a submenu, click the **Outdent Menu** button  .

Notes:



About exporting pop-up menus

Fireworks generates the JavaScript necessary to view pop-up menus in web browsers. When a Fireworks document containing pop-up menus is exported to HTML, a JavaScript file called `mm_menu.js` is exported to the same location as the HTML file.



To export a pop-up menu

1. Choose **File > Export**

2. Navigate to the desired site folder on your hard drive.
3. Choose *HTML and Images* from the Save as Type pop-up menu.
4. Click the **Options** button and choose your HTML editor from the HTML Style pop-up menu. If your HTML editor is not listed, choose Generic.



Note: It's important that you choose your HTML editor as the HTML style; if you do not, interactive elements such as buttons and rollovers may not function correctly when imported into your HTML editor.

5. Click **OK** to return to the Export dialog box.
6. Choose *Export HTML* file from the HTML pop-up menu. Choosing Export HTML generates an HTML file and the associated image files in the location you specify.
7. If your document contains slices, choose *Export Slices* from the Slices pop-up menu.
8. Choose *Put Images in Subfolder* if you want images stored in a separate folder. You can choose a specific folder or use the Fireworks default, which is a folder named *images*.
9. Click **Save**.



Note: After export, you'll see the files Fireworks exported on your hard drive. Images and an HTML file are generated in the location you specified in the Export dialog box.

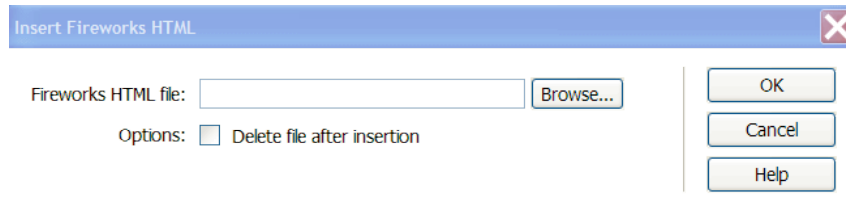


Notes:



Placing Fireworks HTML into a Dreamweaver document

1. From your Dreamweaver document, *click* where you would like the pop-up menu to be placed.
2. Choose **Insert > Image Objects > Fireworks HTML**.
3. Choose **Browse** to find the pop-up menu HTML file.



4. Click **OK**. The pop-up menu is inserted.



Notes:

This manual contains information from the Macromedia® Fireworks® MX 2004 Using Fireworks Guide.
©1997 – 2003 Macromedia, Inc. All rights reserved.

This manual is intended for classroom use.