

# Using Macintosh OS X on a Cluster Machine

This document contains the following sections:

- [Log In/Out](#)
- [Using the Dock](#)
- [The Home Directory](#)
- [Using MyAFS](#)
- [MyFiles](#)
- [Roaming Profiles](#)

---

For information related to this topic refer to:

- [An Overview of Files and Directories in AFS](http://www.cmu.edu/computing/doc/unix/afs-files.html)  
(<http://www.cmu.edu/computing/doc/unix/afs-files.html>)
- [MyFiles and Roaming Profiles](http://www.cmu.edu/computing/clusters/profiles.html)  
(<http://www.cmu.edu/computing/clusters/profiles.html>)
- [Increasing and Managing your AFS and Cyrus Quotas](http://www.cmu.edu/computing/doc/accounts/quota/index.html)  
(<http://www.cmu.edu/computing/doc/accounts/quota/index.html>)

## Log In / Log Out

Follow these steps to log on and log out of a cluster Macintosh:

- To log on to a cluster Macintosh, use your **Andrew ID** and **password**.
  - To log out, click on the blue **Apple** icon, then select **Log Out...**
- Note:** Do not shut down Macintosh cluster computers. Software updates are downloaded overnight; the machines should be left on at all times.

The Cluster Macintosh OS X desktop



*Last Updated: 08/17/06*

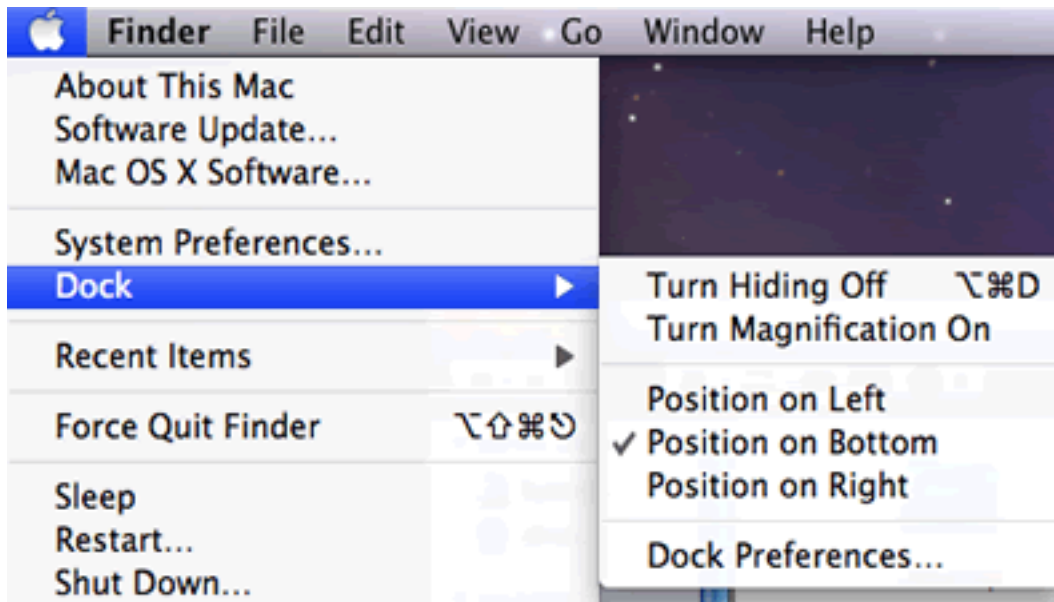
## Using the Dock

The Dock makes it easy to open applications, documents and other items you use frequently. You can add icons to the Dock for applications, files, folders, servers, and web sites. Dock preferences are stored in your roaming profile and accessible from any Macintosh cluster computer.

To add an item, drag its icon from the Finder window to the Dock. Application icons go to the left of the line and all other icons to the right. To open an item, click its icon.



To change the location or appearance of the dock, click the **Apple menu** and select **Dock**.



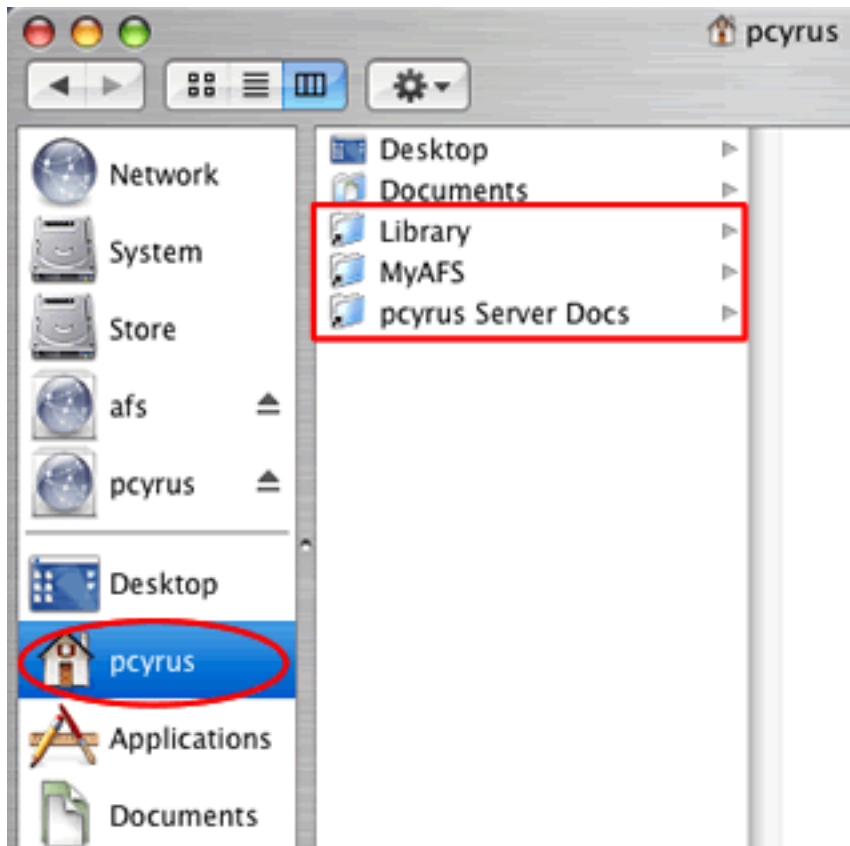
**Note:** If a question mark appears on the dock, the application is not on that machine or is stored in a different location on that Macintosh. To remove the question marks from the dock drag them onto the desktop.

*Last Updated: 2/24/09*

## The Home Directory

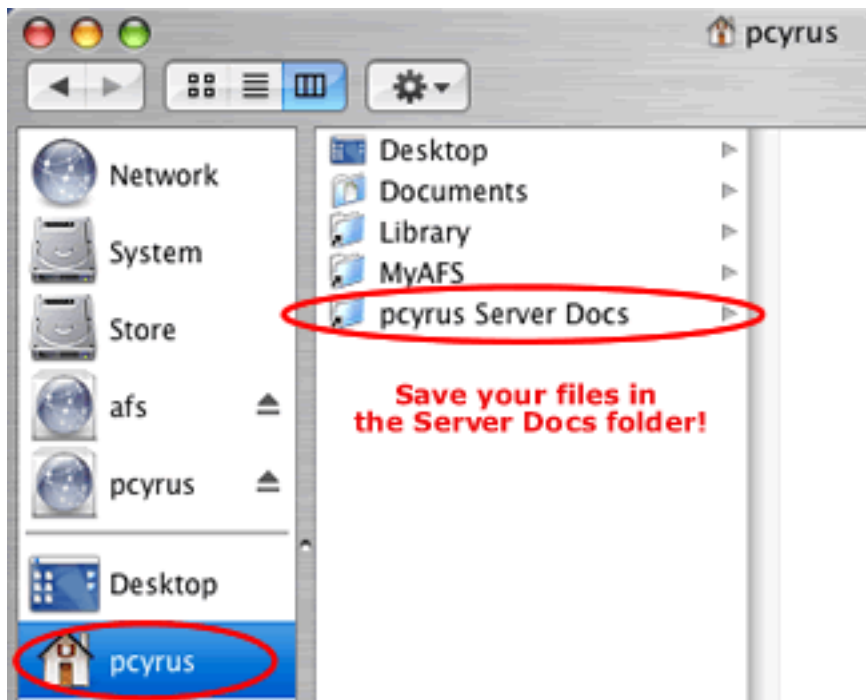
In the Macintosh Finder window, there is a Home directory icon labeled with your **userID**.

The Home directory is on the local machine and contains local folders (Desktop and Documents) shortcuts to the **Library** (roaming profiles data) and the **userID Server Docs** (Documents, Pictures and Music) folders.



Many applications will save your files on the local machine by default. We RECOMMEND that you save your files locally while working on them. Then, copy the files to your **Server Docs** folder, [MyAFS](#) space or removable media BEFORE you logout.

**Important Note!** If you save your files anywhere in your **Home** directory other than your **Server Docs** or **MyAFS** folder, the files will be **deleted** when you log off the computer. To access your files from any Windows or Macintosh cluster computer, place them in the **Server Docs** folder labeled with **your userID**.



## File Maintenance Tips

The following are some tips for effective file maintenance on cluster Macintosh machines:

- We recommend that you save your files locally while working on them. Then, copy the files to your **Server Docs** folder, **MyAFS** space or removable media BEFORE you logout. For more information, read [An Overview of Files and Directories in AFS](http://www.cmu.edu/computing/doc/unix/afs-files.html) (<http://www.cmu.edu/computing/doc/unix/afs-files.html>). As always, it is important to save your work frequently.
- Files in AFS are available via [SFTP](http://www.cmu.edu/computing/doc/software/fugu/index.html) (<http://www.cmu.edu/computing/doc/software/fugu/index.html>) (Secure File Transfer Protocol). Use [Fetch](http://www.cmu.edu/computing/doc/software/fetch/index.html) (<http://www.cmu.edu/computing/doc/software/fetch/index.html>) to download files from your AFS directory to Macs where OpenAFS is not installed or use [SFTP](http://www.cmu.edu/computing/doc/software/fugu/index.html) (<http://www.cmu.edu/computing/doc/software/fugu/index.html>) (Secure File Transfer Protocol) to download them to a Windows machine.
- Each Carnegie Mellon student, faculty and staff member is allocated up to 1 GB of storage for files (AFS space). From the Computing tab of the [Carnegie Mellon Web Portal](https://my.cmu.edu) (<https://my.cmu.edu>), you can use the Quota Increase Tool to increase your allocated AFS directory space. Although you have the option to increase your AFS quotas, space is still limited and should not be abused. It is important for you to manage the information that is saved in your AFS disk space. See the [Increasing and Managing your AFS and Cyrus Quotas](http://www.cmu.edu/computing/doc/accounts/quota/index.html) (<http://www.cmu.edu/computing/doc/accounts/quota/index.html>) document for tips on managing your AFS space.

*Last Updated: 5/21/09*

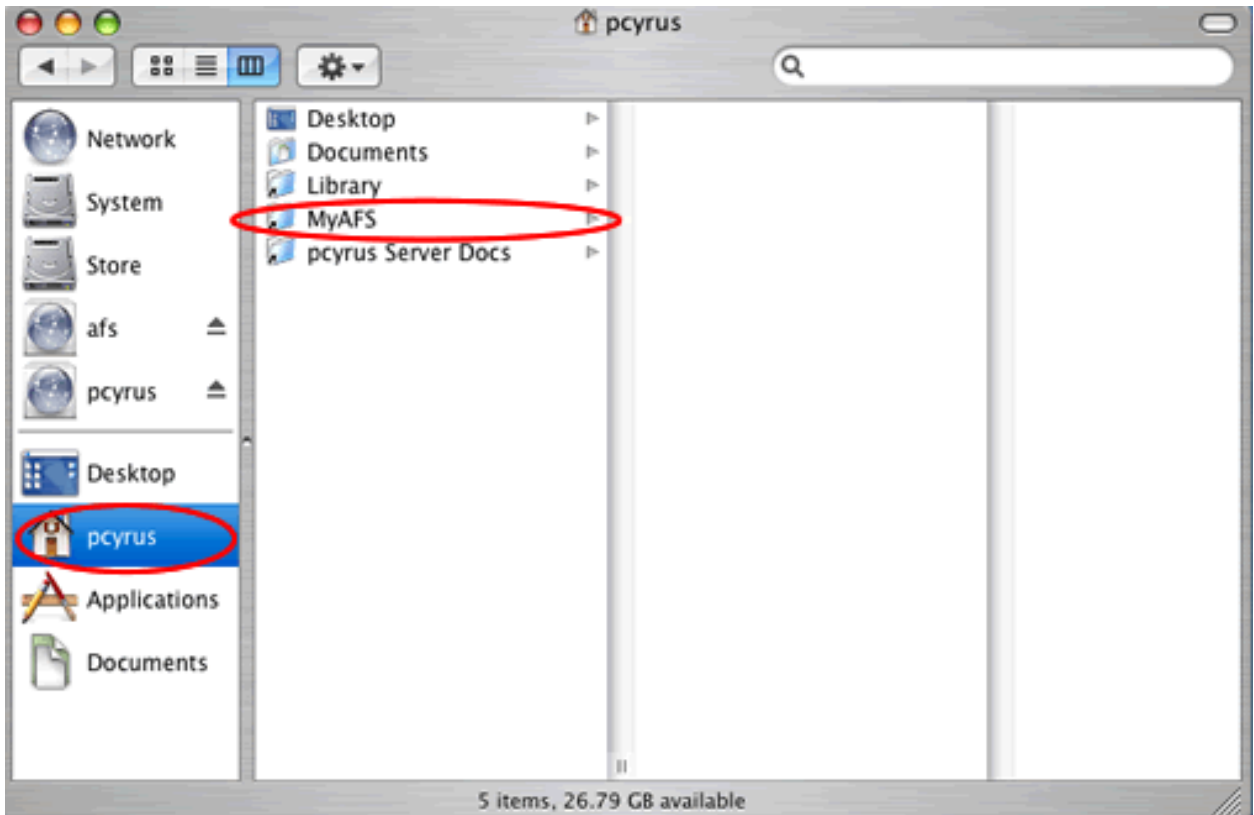
## Using MyAFS

In Macintosh clusters you can save files to your AFS (Andrew File System) directory. To save a file to your AFS directory, follow these steps:

1. Logon to a Macintosh cluster machine.
2. From the **Dock**, click the **Finder** icon.



3. In the Finder window, click the **Home** icon with your **userID** to highlight it.
4. Click **MyAFS**. The contents of your AFS directory will display.



5. Save files to your AFS directory in the same manner you would any Macintosh directory. To open a file in a Macintosh cluster locate the file in your AFS directory and double-click the file icon.

**Note:** MyFiles and AFS are different. MyFiles can only be accessed from Windows and Macintosh cluster computers and [on-campus Windows](http://www.cmu.edu/computing/doc/clusters/windows/myfiles/index.html) (<http://www.cmu.edu/computing/doc/clusters/windows/myfiles/index.html>) machines. [AFS](http://www.cmu.edu/computing/doc/unix/afs-files.html) (<http://www.cmu.edu/computing/doc/unix/afs-files.html>) can be accessed from any cluster computer OR using [SFTP](http://www.cmu.edu/computing/doc/software/fugu/index.html) (<http://www.cmu.edu/computing/doc/software/fugu/index.html>) on a computer with internet access.

## Connecting to Servers

Follow these steps to log onto a server:

1. From the **Dock**, click the **Finder** icon.



2. From the **Finder** window menu, select **Go > Connect to Server....**
3. Enter the full hostname or IP address for the server.
4. Login with your server account userid and password. (If you are unsure, talk to the server administrator.)

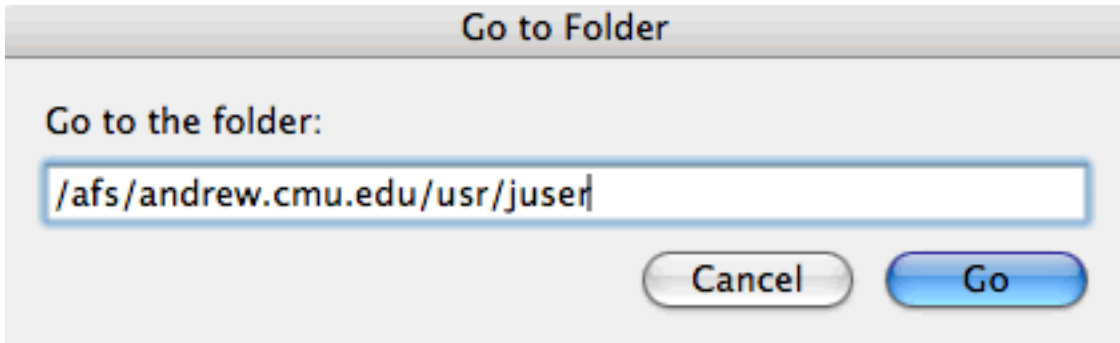
## Connecting to Other AFS Directories or Project Volumes

Follow these steps to connect to an AFS directory other than your home directory:

1. From the **Dock**, click the **Finder** icon.



2. From the **Finder** window menu, select **Go > Connect to Server....**
3. In the **Go to the folder:** field enter: `/afs/andrew.cmu.edu/usr/USERID` (where USERID is replaced with the actual userid).



To go to an Andrew Project Volume:

1. Select **Go > Go To Folder...** and enter the full path name of the project volume.

## Terminal

Terminal is an application which enables you to issue [UNIX commands](http://www.cmu.edu/computing/doc/unix/unix-andrew/index.html) on the local machine or login to a remote computer and issue commands as though you were typing on that computer's keyboard. The Terminal utility allows you to connect using the SSH-2 protocol for secure communication.

Use [Terminal](http://www.cmu.edu/computing/doc/software/terminal/index.html) to SSH to your Andrew account. Once connected, use [UNIX commands](http://www.cmu.edu/computing/doc/unix/unix-andrew/index.html) to manipulate files, create directories and set access rights.

*Last Updated: 8/17/06*

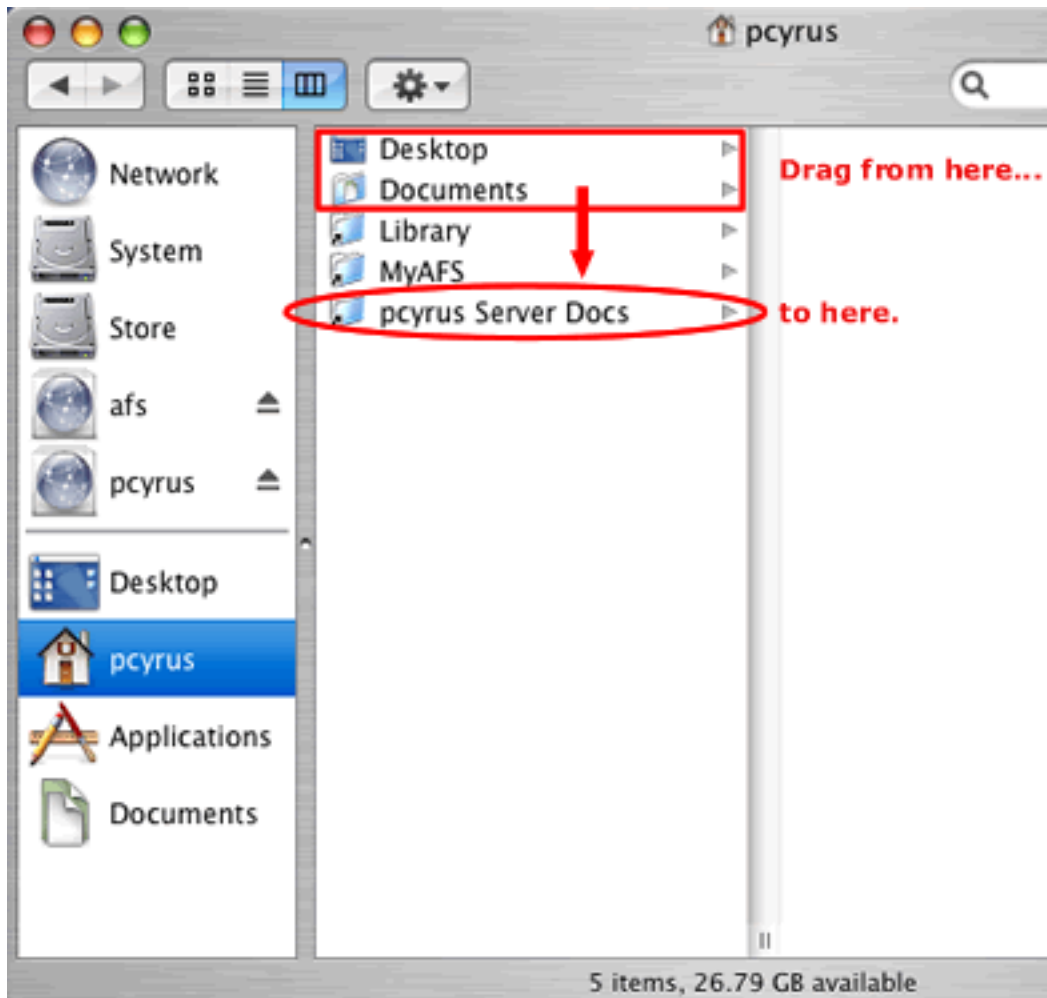
*Last Reviewed: 2/24/09*

## MyFiles on Macintosh

When using a Macintosh cluster computer, your **Home** directory will have a folder labeled **<userID> Server Docs**. This folder points to your MyFiles space on the remote server. MyFiles gives students, faculty and staff the ability to access saved documents from Windows and Macintosh cluster computers.

### Copying Files to Your MyFiles Space

To copy files from your local home directory to your MyFiles space, drag the file to your **Server Docs** folder. The file is now available from any Windows or Macintosh cluster computer.



### Accessing Previous Versions

The MyFiles space is automatically backed up twice each day. These backups or "snapshots" allow you to view, copy or perform self-restores from previous versions of your files or folders stored in the MyFiles space.

To restore a file that was saved on a public Macintosh cluster computer, you must use a public Windows cluster computer. For

help, read and follow the steps provided in [Windows MyFiles](http://www.cmu.edu/computing/doc/clusters/windows/myfiles/index.html) (<http://www.cmu.edu/computing/doc/clusters/windows/myfiles/index.html>) page.

## Managing Your MyFiles Quota

If your MyFiles space becomes full, you will experience performance problems; most applications will NOT launch. Consider deleting any unused files from your **Server Docs** folder.

To determine your MyFiles quota usage, follow the steps included at [Determining Your Quota](http://www.cmu.edu/computing/doc/clusters/windows/quota.html) (<http://www.cmu.edu/computing/doc/clusters/windows/quota.html>).

*Last Updated: 4/29/09*

*Last Reviewed: 2/24/09*

