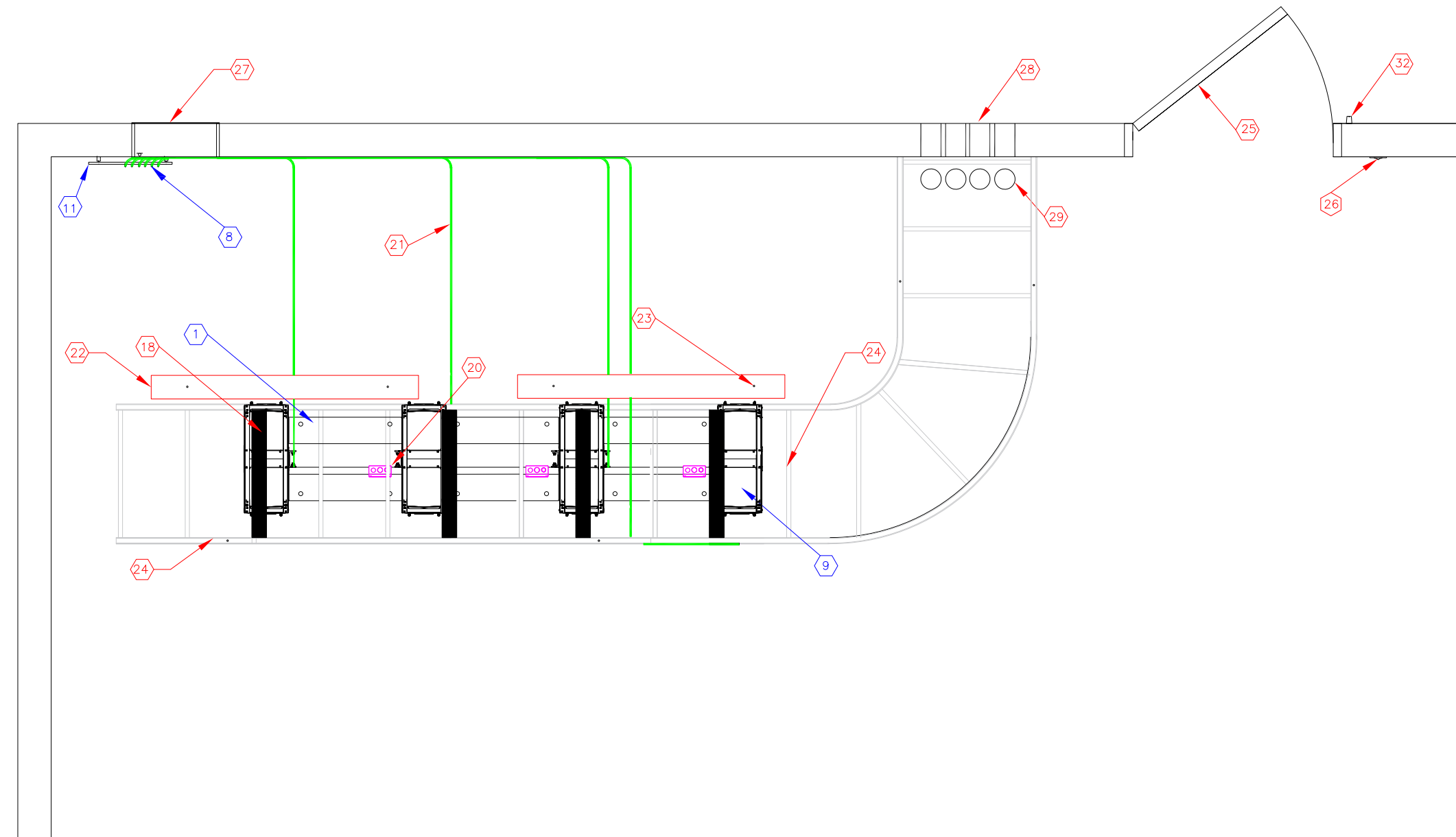
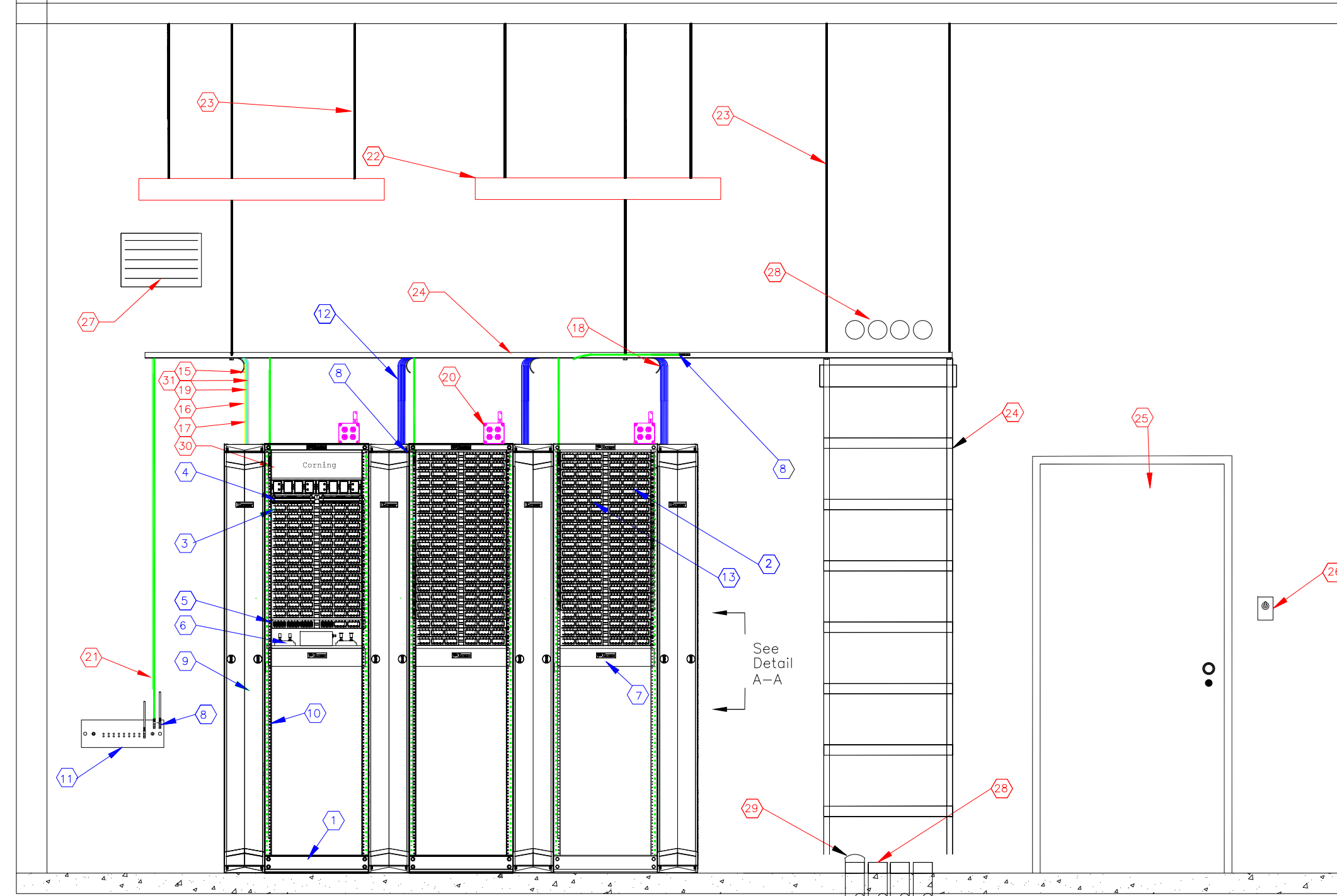
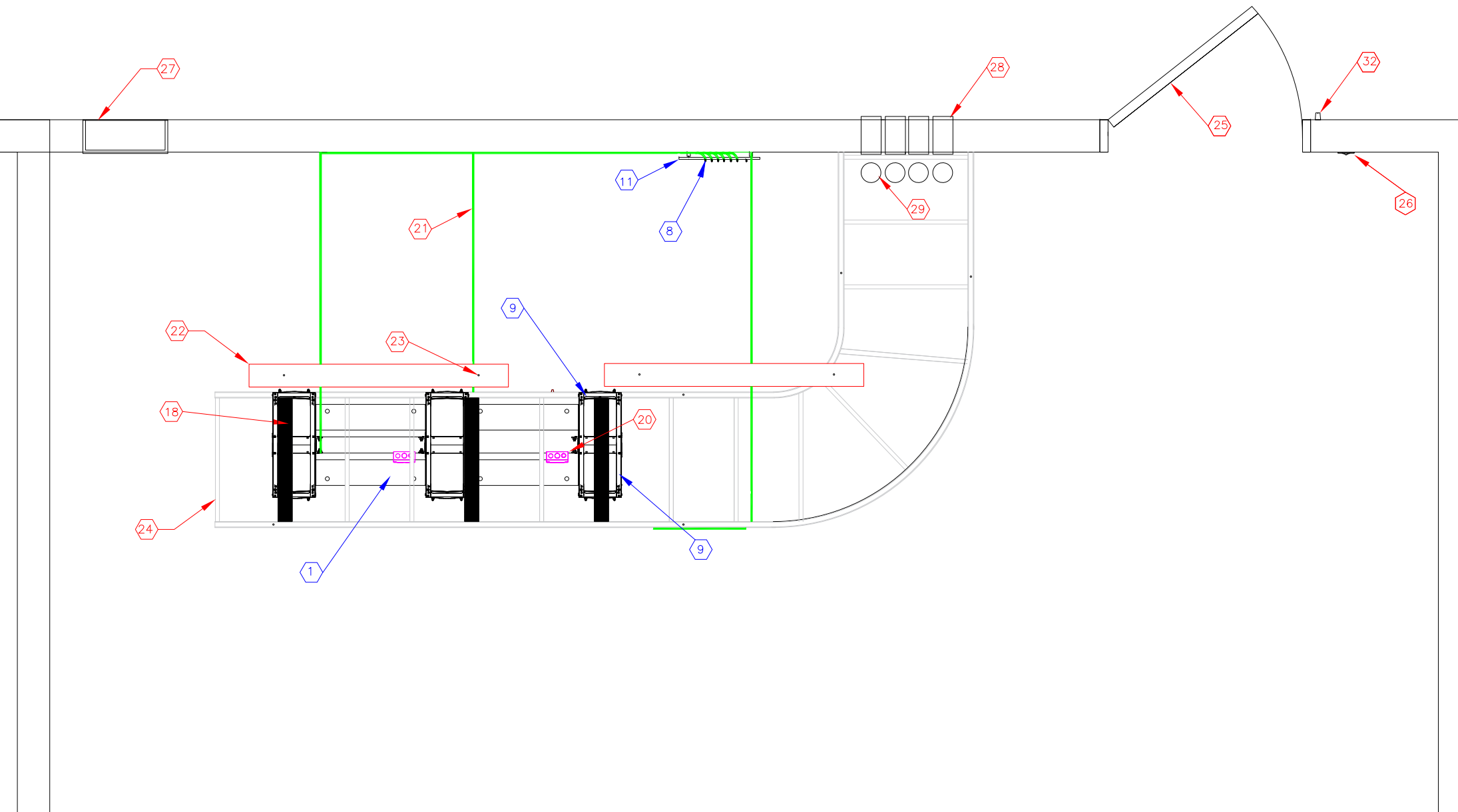


Detail  
A-A

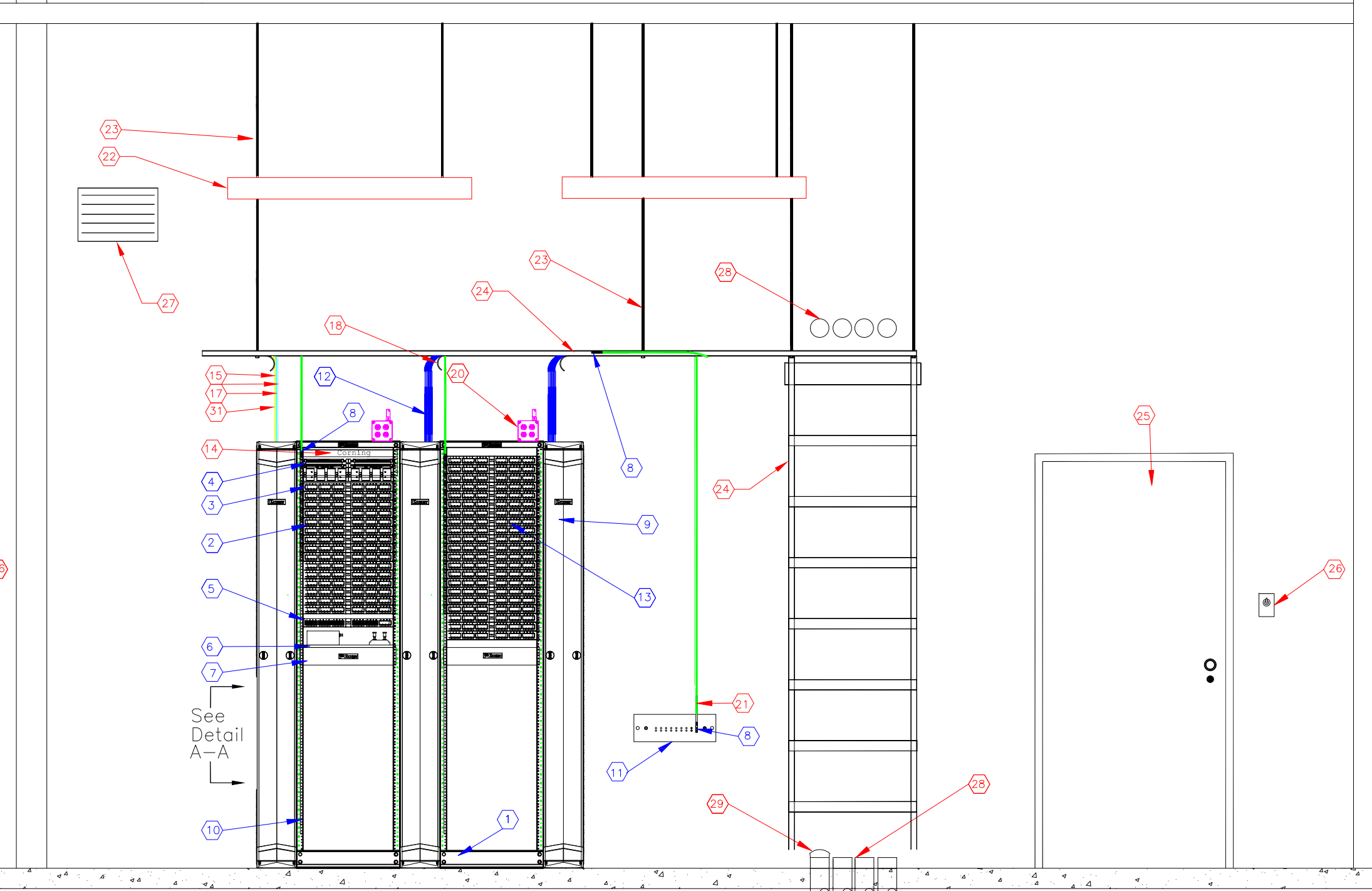
MDF Plan View



IDF Plan View



Typical MDF  
Elevation View



Typical IDF  
Elevation View

LEGEND

- ① Panduit seven (7) foot aluminum 45RU, #12-24 threaded mounting hole two post rack with RU numbers on both side of rack.
- ② Panduit 19" 24 port angle patch distribution panel Mini-Com, part #: CPPA24FMWBLY
- ③ Panduit 19" 24 port angle patch panel, part #: CPPA24FMWBLY, Closet to Closet
- ④ Panduit 19" - 4U, 50 Pair 110 Block with horizontal cable manager panel, part #: P110b50R4WJ
- ⑤ Panduit Cable TV coupler Module, F-Type, Black jack, part #: PAN-CMFBK
- ⑥ Panduit 19" Rack Shelf - 1U, Part #: SRM19FM1
- ⑦ Panduit 19" - 2U PatchLink Horizontal Cable Manager, place between R22 and R23 on rack. Part #: PAN-WMP1E
- ⑧ Panduit: Two hole grounding copper compression lug - Part #LCD10-14A-L
- ⑨ Panduit: NetRunner 8in - 45RU, Front/Rear with Vertical Cable Managers w/ door, Part #: PAN-WMPVF45E
- ⑩ Panduit Vertical Grounding Strip (78.65 in.), Part No. RGS134-1Y with antioxidant
- ⑪ Panduit Grounding Busbar, 1/4" x 4" x 12" - Part #: PAN-GB4B0612TPI-1
- ⑫ Panduit Category 6A, Plenum rated, Blue sheathing, part #: 14X6-561NH
- ⑬ Panduit, Black 8 pin modular connector, part #: CJ6X88TGBL
- ⑭ Corning PCH-01U fiber cabinet
- ⑮ Corning, twelve (12) strand single mode fiber closet to closet backbone
- ⑯ Corning twelve (12) strand single-mode fiber optic cable building to building backbone
- ⑰ Corning twelve (12) strand optimized multi-mode (mm50/128uM) riser rated cable from MDF to IDF OM3 laser optimized.
- ⑱ Cablofil (Legrand) Cable "drop out" kit, part number SKU:25181149, or equivalent, attached from ladder tray into rear compartment of vertical wiremanagers to reduce stress on cable
- ⑲ Multipair ARMM cable or gel filled riser rated cable from phone company or CMU
- ⑳ Double duplex utility receptacle, emergency power, mounted on top of each rack. Outlet labeled per distribution panel and circuit number.
- ㉑ #6 AWG CU stranded (green sheath) ground conductor individually grounded from each rack, cable tray and CATV grounding buss to Main Grounding Buss
- ㉒ LED ready strip Lighting - 2 tube 4' hung from ceiling - WareLight Industrial Lighting - 4ft 35W, 120/277V or equivalent.
- ㉓ Threaded Rod: Steel, Plain, using 5/16" x 4FT allthread or equivalent
- ㉔ Middle Atlantic 18 inch wide straight cable ladder runway, part number SKU:CLB-10-W18 or equivalent.
- ㉕ 36" 2 hour fire rated steel door, keyed to 99-series, with swipe access reader.
- ㉖ Intermatic 120/277v 20amp, Single-pole 60 minute spring wound mechanical timer switch.
- ㉗ 16" building air-conditioned vent
- ㉘ 4" EMT Sleeves or slot cut in for riser pathway
- ㉙ Hilti Firestop Plug - 2 hour rated Intumescent Polyurethane - Mod # FP400 for used conduits; A 4" Penny and connector on unused conduits.
- ㉚ Corning PCH-04U
- ㉛ AARM - 25 Pair From MDF to IDF(s)
- ㉜ Card Reader for swipe access